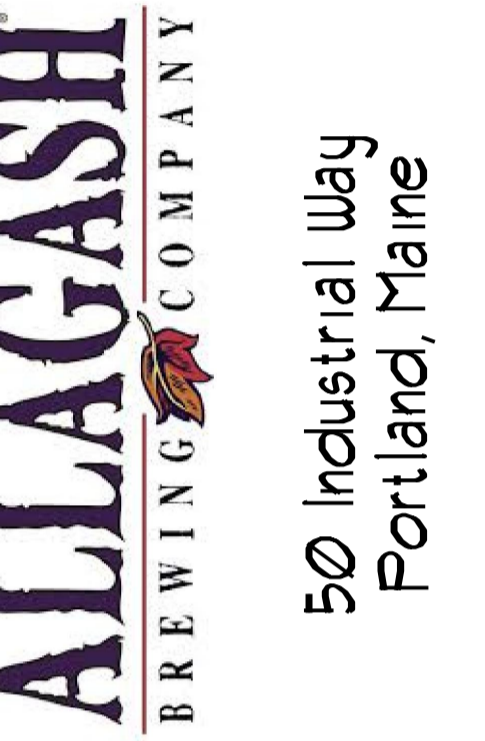
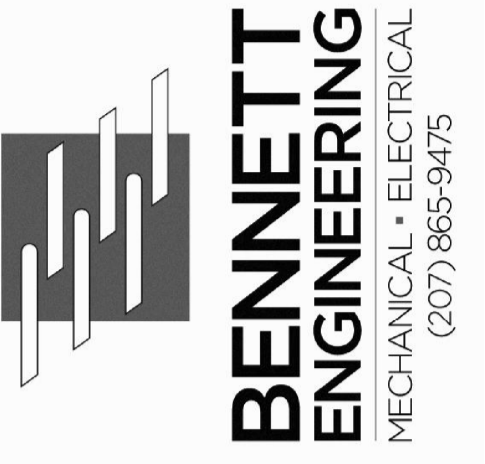
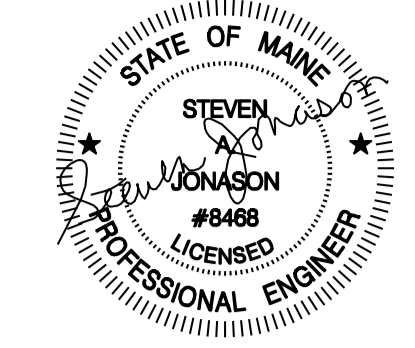




Reviewed for Code Compliance
Inspection Division
Approved with Conditions
Date: 09/15/14



ALLAGASH BREWING CO.
BOTTLING AREA ADDITION
Portland, Maine
ELECTRICAL DEMOLITION PLAN

Date Drawn - 7/7/14

Drawn By -

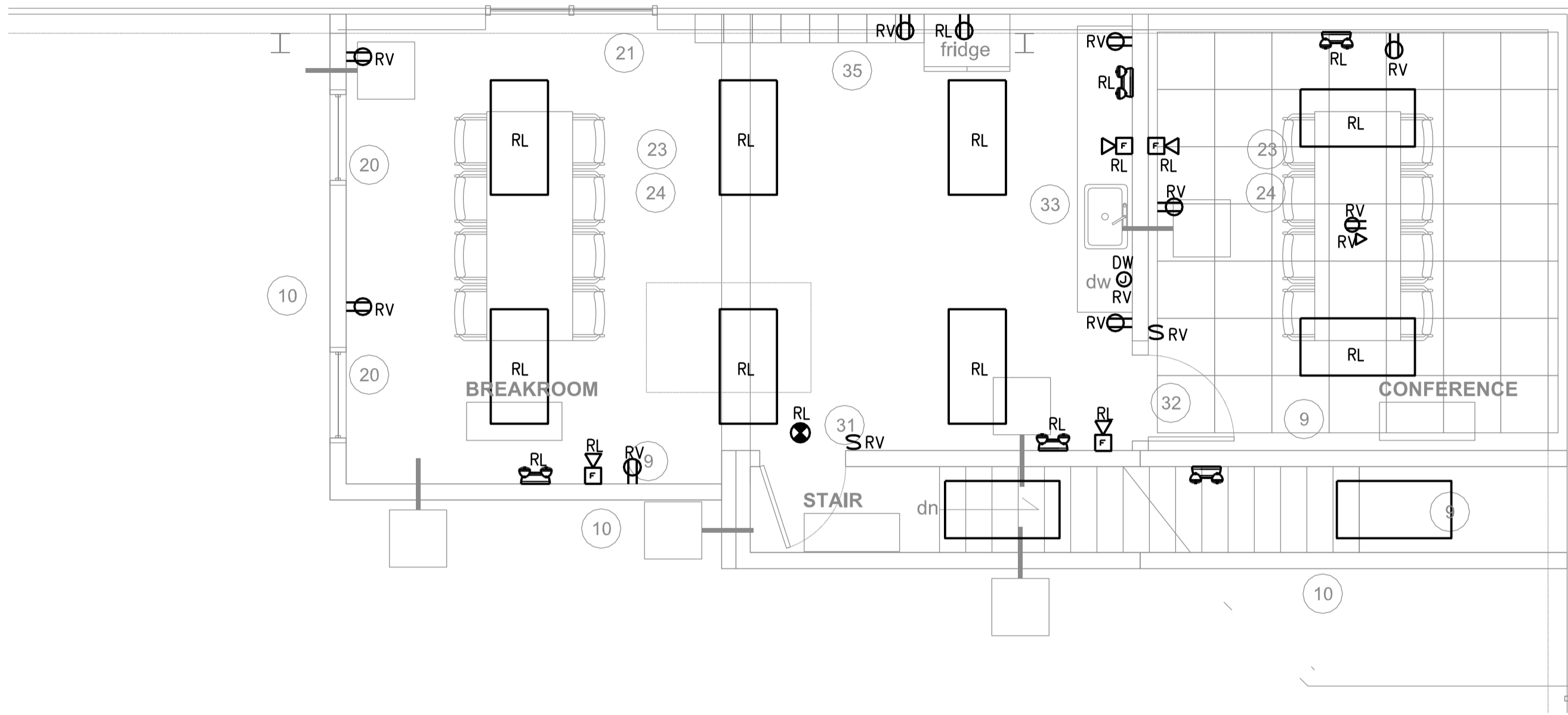
Revised -
PERMIT 07/25/14

Project # 3588

Scale - AS NOTED

Sheet Number - ED-1.0

PROPOSED MEZZANINE NEW PRODUCTION ADDITION

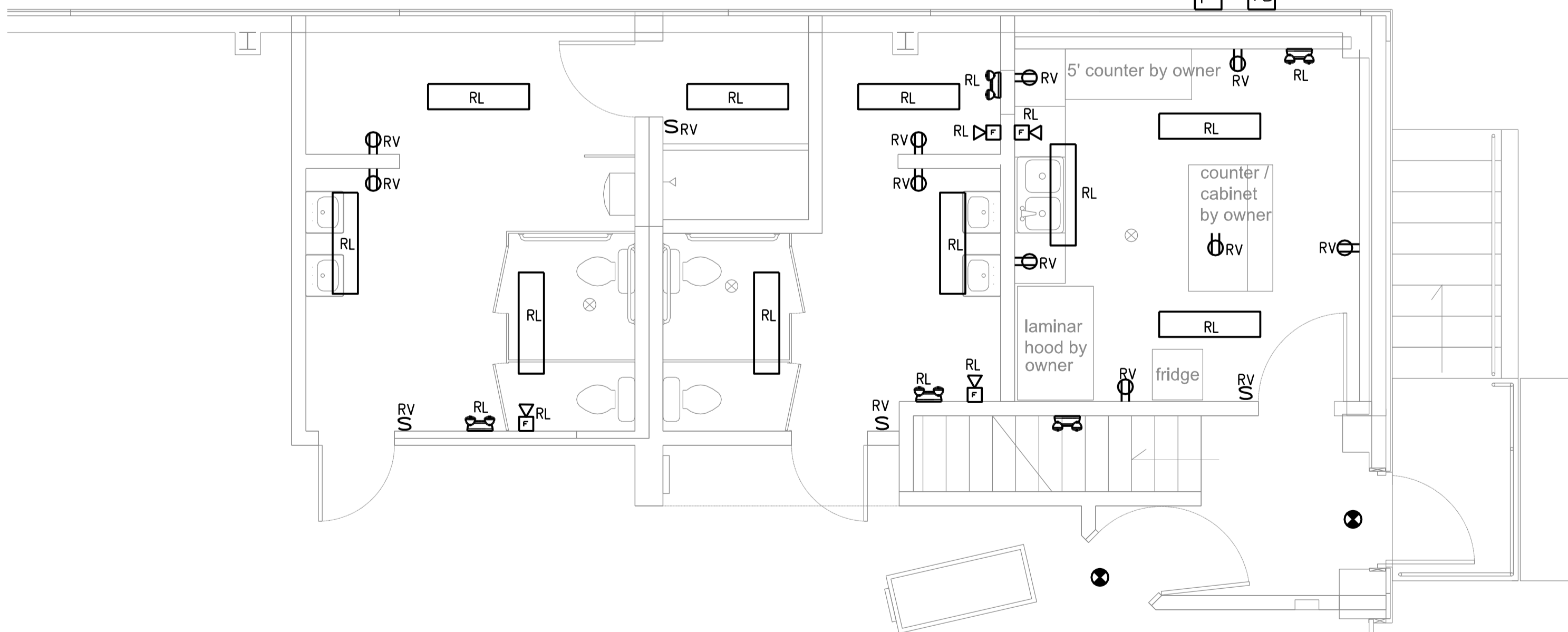


ELECTRICAL DEMOLITION PLAN SECOND FLOOR
SCALE: 1/4"=1'-0"

KEY WORK NOTES

1. ELECTRICAL DEVICES BEING REMOVED (RV), SHALL HAVE WIRING REMOVED BACK TO PANEL. SAFELY DISCARD REMOVED DEVICES.
 2. ELECTRICAL DEVICES TO BE RELOCATED (RL), SHALL BE REMOVED AND SAFELY STORED FOR FUTURE INSTALLATION. REFER TO DRAWINGS E1, E1.1, E2, AND E2.1 FOR NEW LOCATIONS.
- CONTRACTOR SHALL REMOVE, RELOCATE AND QTY (3) REFRIGERATORS, AND (2) OVENS. VERIFY NEW LOCATIONS WITH OWNER AND REWIRE TO EXISTING CIRCUITS.

PROPOSED FIRST FLOOR NEW PRODUCTION ADDITION



ELECTRICAL DEMOLITION PLAN FIRST FLOOR
SCALE: 1/4"=1'-0"