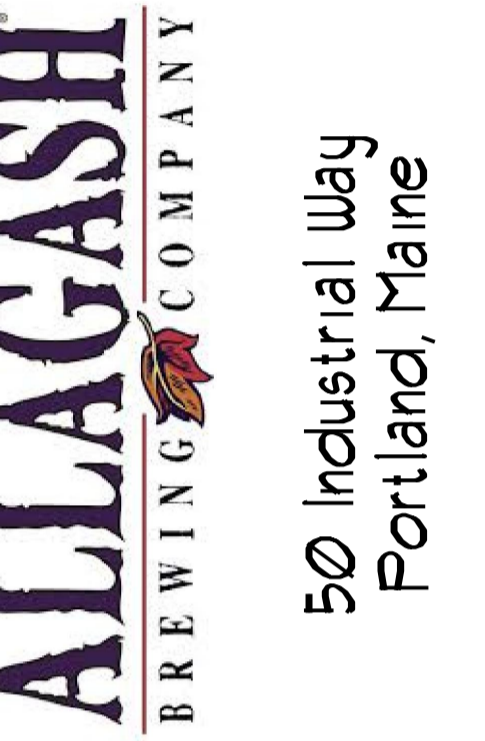
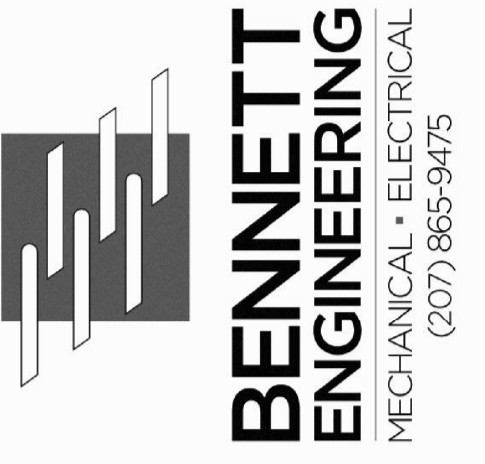
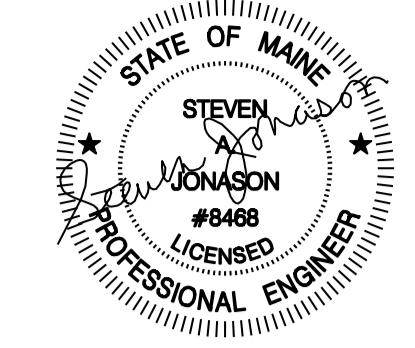




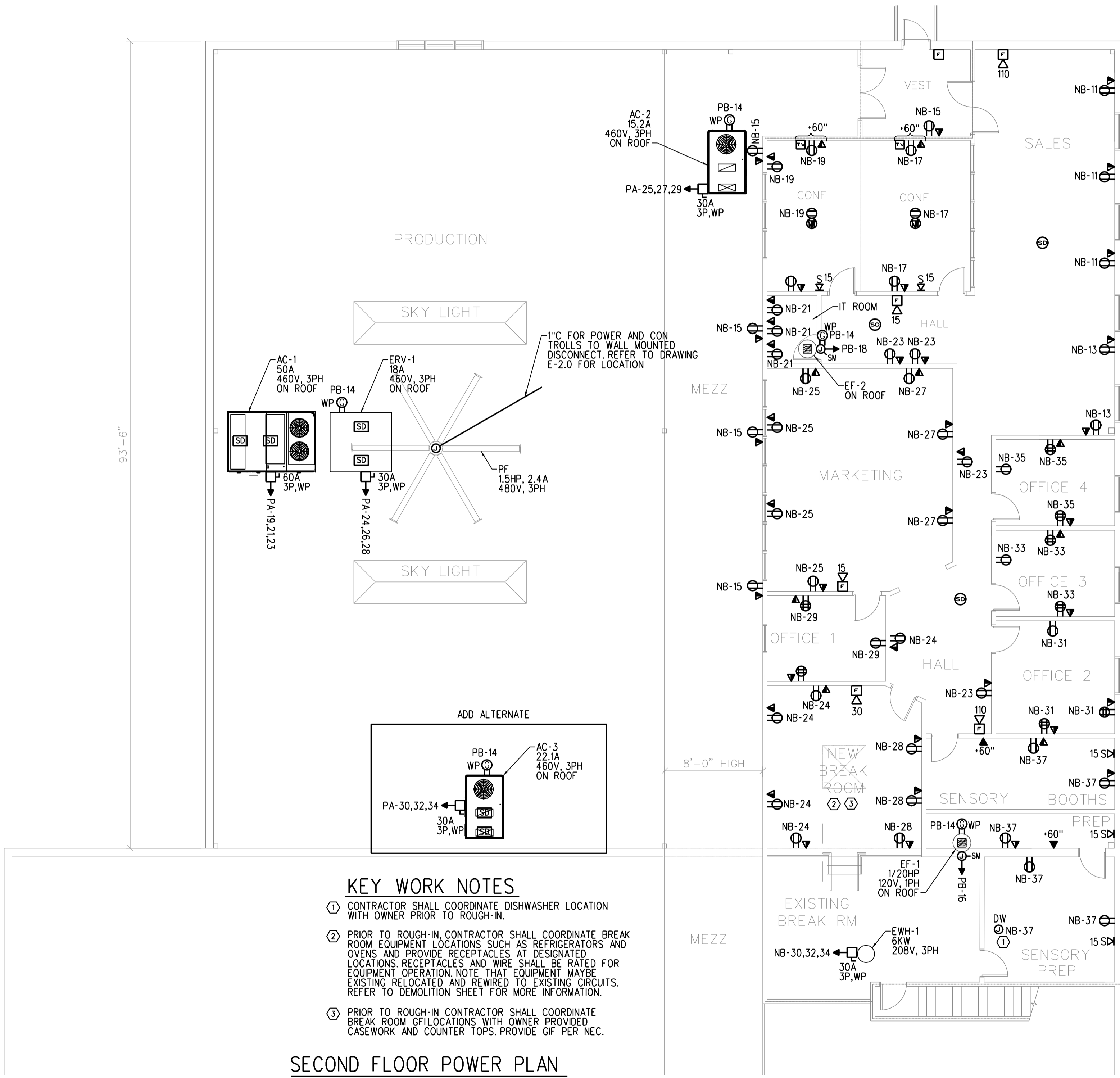
Reviewed for Code Compliance
Inspection Division
Approved with Conditions
Date: 09/15/14



ALLAGASH BREWING CO.
BOTTLING AREA ADDITION
Portland, Maine
SECOND FLOOR POWER PLAN

Date Drawn - 7/7/14
Drawn By - CAT
Revised - PERMIT 07/25/14

Project # 3588
Scale - AS NOTED
Sheet Number - E2.1



- KEY WORK NOTES**
- CONTRACTOR SHALL COORDINATE DISHWASHER LOCATION WITH OWNER PRIOR TO ROUGH-IN.
 - PRIOR TO ROUGH-IN, CONTRACTOR SHALL COORDINATE BREAK ROOM EQUIPMENT LOCATIONS SUCH AS REFRIGERATORS AND OVENS, AND PROVIDE RECEPTACLES AT DESIGNATED LOCATIONS. RECEPTACLES AND WIRE SHALL BE RATED FOR EQUIPMENT OPERATION. NOTE THAT EQUIPMENT MAY BE EXISTING, RELOCATED AND REWIRED TO EXISTING CIRCUITS. REFER TO DEMOLITION SHEET FOR MORE INFORMATION.
 - PRIOR TO ROUGH-IN, CONTRACTOR SHALL COORDINATE BREAK ROOM GF LOCATIONS WITH OWNER PROVIDED CASEWORK AND COUNTER TOPS. PROVIDE GIF PER NEC.

SECOND FLOOR POWER PLAN
SCALE: 1/8"=1'-0"