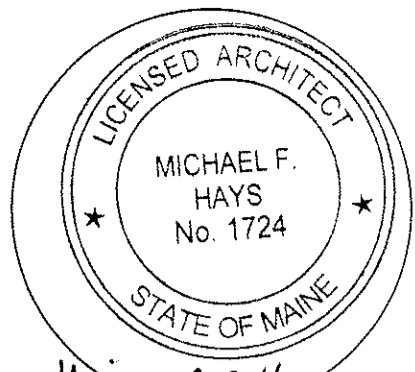




Reviewed for Code Compliance
Inspection Division
Approved with Conditions
Date: 09/15/14

REPRODUCTION OR MISUSE OF
THIS DOCUMENT WITHOUT
WRITTEN PERMISSION FROM
GRANT HAYS ASSOCIATES IS
PROHIBITED.



Michael F. Hays
REVISIONS

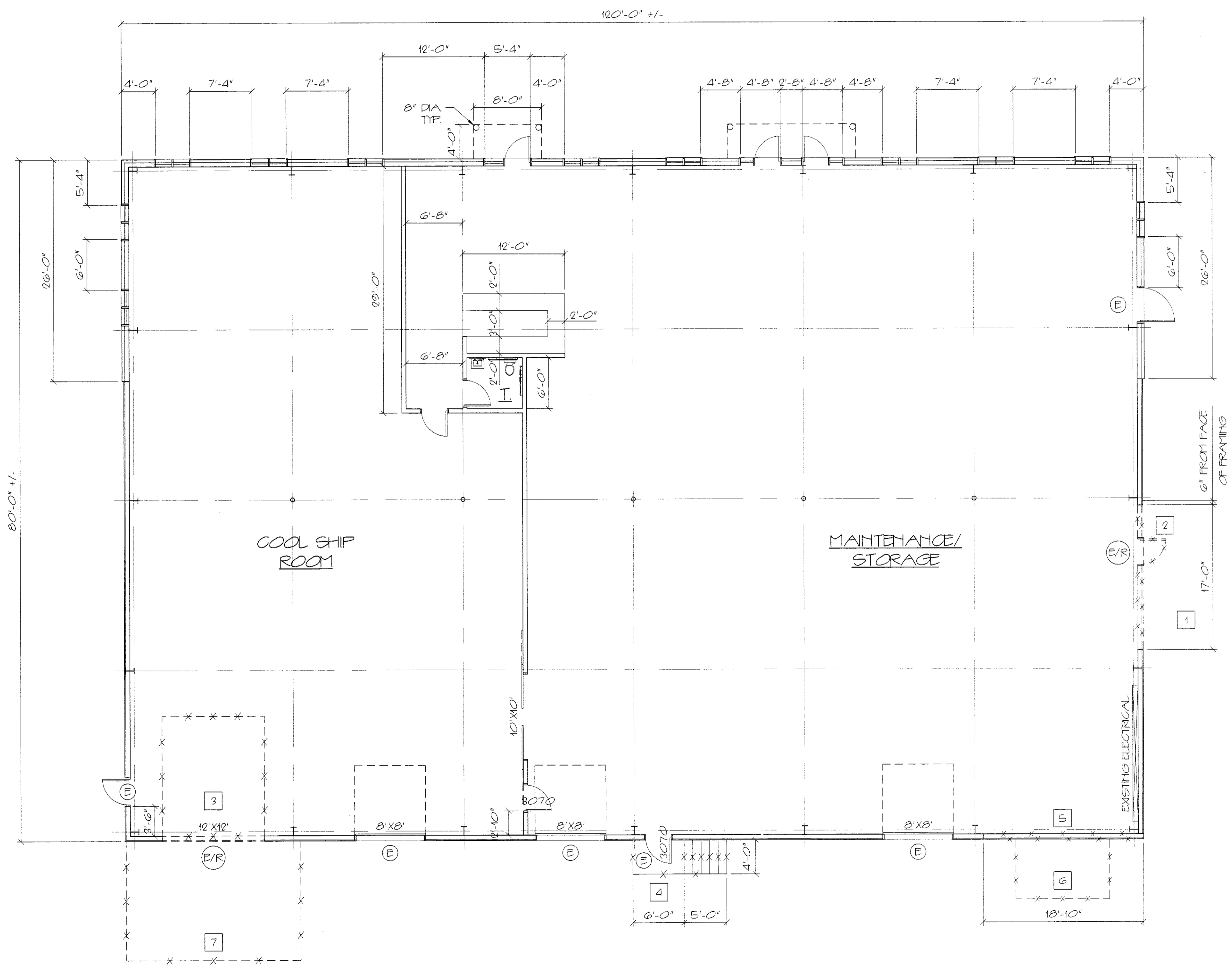
NO.	DATE	DESCRIPTION

NEW ADDITION FOR
ALLAGASH BREWING CO.
50 INDUSTRIAL WAY PORTLAND, MAINE

HAY S
ARCHITECTURE
INTERIOR DESIGN
P.O. BOX 6179 FALMOUTH, MAINE 04105
(207) 871-5900
(207) 871-9308

ANTHAY S
100 INDUSTRIAL WAY
EXISTING CONDITIONS
DEMOLITION PLAN
& NOTES

GRANT HAY S
SCALE 1/8" = 1'-0"
DATE 7/2/2014
DRAWN BY SAM/MFH
JOB NO. 140560
DRAWING NO. **AD-1**



100 INDUSTRIAL WAY
EXISTING CONDITIONS DEMOLITION PLAN
1/8" = 1'-0"

DEMOLITION NOTES

- 1 REMOVE EXISTING EXTERIOR WALL & DOOR FOR RELOCATED EXISTING 12' X 12' OVERHEAD DOOR. REFER TO STRUCTURAL DRAWINGS FOR FRAMING MODIFICATIONS. SALVAGE EXISTING REMOVED EXTERIOR METAL WALL PANELS FOR REUSE IN AREAS DESIGNATED FOR INFILL AT REMOVALS, REPAIR, AND PATCHING.
- 2 REMOVE & RELOCATE EXISTING DOOR FRAME & HARDWARE. RELOCATE ASSOCIATED EXIT LIGHT, SWITCH, ETC TO NEW DOOR LOCATION.
- 3 RELOCATE EXISTING MANUAL 12' X 12' OVERHEAD SECTIONAL DOOR & TRACK. REMOVE ABANDONED OPERATOR & TORSION BALANCE SPRING ASSEMBLY. REMOVE METAL TRIM AT OPENING. INFILL EXISTING OPENING WITH FRAMING AS INDICATED ON THE STRUCTURAL DRAWINGS. INSTALL SALVAGED EXTERIOR METAL WALL PANELS AND FLASHING FOR A WEATHER-TIGHT ASSEMBLY.
- 4 REMOVE EXISTING CONCRETE STAIR. SEE SITE DRAWINGS FOR NEW WORK.
- 5 REMOVE EXISTING EXTERIOR WALL FOR NEW BUILDING ADDITION. SEE STRUCTURAL DRAWINGS FOR HEIGHT OF OPENING/FRAMING MODIFICATIONS AT EXISTING BUILDING. SALVAGE EXISTING EXTERIOR METAL WALL PANELS FOR INFILL AND REPAIR AREAS.
- 6 REMOVE EXISTING DIKE SHED IN ITS ENTIRETY. EXISTING DIKE RACK TO BE RELOCATED BY OWNER.
- 7 REMOVE EXISTING BITUMINOUS RAMP. SEE SITE DRAWINGS.