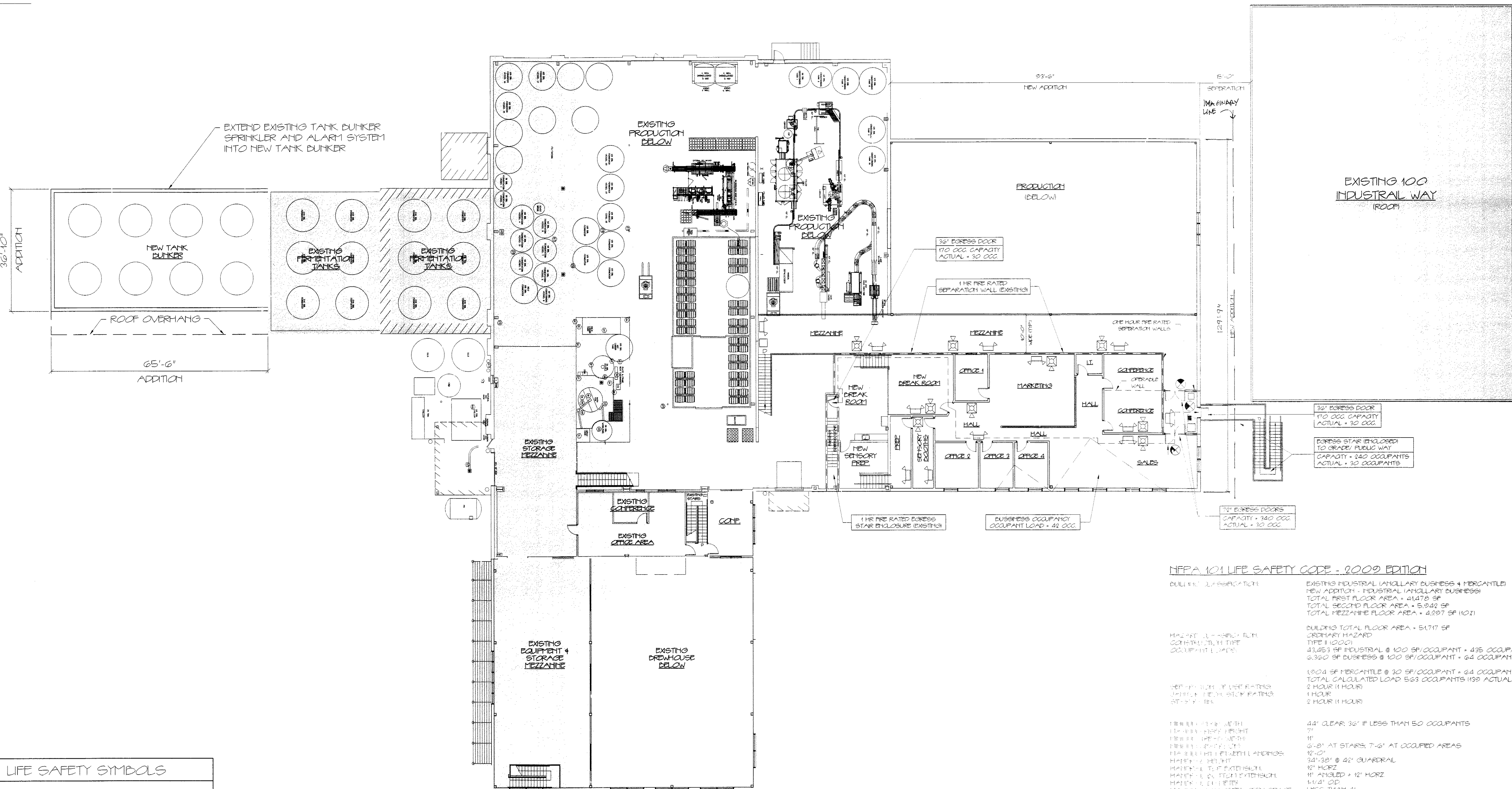




Reviewed for Code Compliance
Inspection Division
Approved with Conditions

Date: 09/15/14



LIFE SAFETY SYMBOLS

- EXIT LIGHT
- FIRE EXTINGUISHER
- FIRE ALARM FULL MANUAL PULL STATION
- FIRE ALARM PANEL
- EMERGENCY LIGHT
- FIRE ALARM HORN/STROBE UNIT
- FIRE ALARM STROBE UNIT
- SMOKE DETECTOR
- ANNUNCIATOR PANEL
- "NOT AN EXIT" SIGN
- KNOX BOX
- 1 HR. RATED PARTITION
- 2 HR. RATED PARTITION



SECOND FLOOR FACILITY CODE COMPLIANCE PLAN

SCALE: 1/16" = 1'-0"

LIFE SAFETY NOTES

- THE NEW BUILDING ADDITION SHALL HAVE AN NFPA 13 FIRE SUPPRESSION SPRINKLER SYSTEM INSTALLED. SPRINKLER SYSTEM SHALL BE INSTALLED BY A CERTIFIED SPRINKLER CONTRACTOR AND SHALL BE REVIEWED AND APPROVED BY THE STATE OF MAINE FIRE MARSHAL AS WELL AS THE LOCAL AUTHORITY HAVING JURISDICTION. THE CONTRACTOR SHALL BEAR SOLE RESPONSIBILITY FOR THE DESIGN AND INSTALLATION OF THE SYSTEM FOR OCCUPANCY.
- THE SPRINKLER CONTRACTOR SHALL VERIFY THE EXISTING BUILDING SPRINKLER/FIRE ALARM SYSTEM HAS SUFFICIENT CAPACITY FOR EXTENDING INTO THE NEW BUILDING ADDITION.
- THE CLOSEST FIRE HYDRANT TO THE BUILDING HAS A STATIC PRESSURE OF 80 PSI AND A FLOW OF 2,348 GPM.
- EXTEND THE EXISTING FIRE ALARM SYSTEM INTO THE NEW ADDITION AS REQUIRED FOR COMPLIANCE WITH NFPA 101 LIFE SAFETY CODE. COORDINATE WITH SPRINKLER SYSTEM MODIFICATION VERIFY LOCATION OF ALARM AND NOTIFICATION PANELS WITH THE AUTHORITY HAVING JURISDICTION.
- SEE SHEET A-12 - ACCESSIBILITY DETAILS FOR MOUNTING HEIGHTS OF LIFE SAFETY DEVICES.

NFPA 101 LIFE SAFETY CODE - 2009 EDITION

BUILDING CLASSIFICATION	EXISTING INDUSTRIAL (HOLLARY BUSINESS + MERCANTILE)
NEW ADDITION - INDUSTRIAL (HOLLARY BUSINESS)	
TOTAL FIRST FLOOR AREA - 41,478 SF	
TOTAL SECOND FLOOR AREA - 5,940 SF	
TOTAL MEZZANINE FLOOR AREA - 4,897 SF (102)	
BUILDING TOTAL FLOOR AREA - 51,717 SF	
ORDINARY HAZARD TYPE I (1000)	
43,453 SF INDUSTRIAL @ 100 SF/OCCUPANT = 435 OCCUPANTS (40 ACTUAL)	
2,362 SF BUSINESS @ 100 SF/OCCUPANT = 24 OCCUPANTS (135 ACTUAL)	
13,004 SF MERCANTILE @ 30 SF/OCCUPANT = 64 OCCUPANTS	
TOTAL CALCULATED LOAD 563 OCCUPANTS (139 ACTUAL)	
1 HOUR 11 HOUR	
2 HOUR 11 HOUR	
44" CLEAR: 36" IF LESS THAN 50 OCCUPANTS	
11"	
2'-8" AT STAIRS: 7'-6" AT OCCUPIED AREAS	
12'-0"	
34'-38" @ 42" GUARDRAIL	
12" HORIZ	
11" ANGLED @ 12" HORIZ	
13'-0" @ 12"	
LESS THAN 4"	

BUILDING USES

INDUSTRIAL BUSINESS

MAX. ALLOWABLE TRAVEL DISTANCE

MAX. ALLOWABLE CORRIDOR PATH

MAX. ALLOWABLE CORRIDOR WIDTH

MIN. CORRIDOR CLEARANCE WIDTH

MIN. CORRIDOR CLEARANCE HEIGHT

MIN. CORRIDOR CLEARANCE RATING

MIN. CORRIDOR CLEARANCE RATING

MIN. CORRIDOR CLEARANCE RATING

MIN. CORRIDOR CLEARANCE RATING

MIN. CORRIDOR CLEARANCE RATING

MIN. CORRIDOR CLEARANCE RATING

MIN. CORRIDOR CLEARANCE RATING

MIN. CORRIDOR CLEARANCE RATING

MIN. CORRIDOR CLEARANCE RATING

MIN. CORRIDOR CLEARANCE RATING

MIN. CORRIDOR CLEARANCE RATING

MIN. CORRIDOR CLEARANCE RATING

MIN. CORRIDOR CLEARANCE RATING

MIN. CORRIDOR CLEARANCE RATING

MIN. CORRIDOR CLEARANCE RATING

MIN. CORRIDOR CLEARANCE RATING

MIN. CORRIDOR CLEARANCE RATING

MUFG (MAINE UNIFORM BUILDING CODE) MINIMUM INSULATION VALUES

PER 2012 ASHRAE TABLE 5.5.2.12, 5.5.2.21 AND 5.5.2.3

ZONE	R-VALUE	U-FACTOR	SHGC
EXTERIOR WALL	15.5	0.064	NA
ROOF (HATCH DOOR)	20.0	0.048	NA
GLAZED DOOR (HATCH)	15.0	0.062	NA
FRONT WALL	7.5	0.133	NA
DOOR (HATCH DOOR)	2.0	0.50	NA
DOOR (HATCH DOOR)	125	0.80	NR
DOOR (HATCH DOOR)	2.0	0.35	NR
DOOR (HATCH DOOR)	2.0	0.45	NR

REPRODUCTION OR MISUSE OF THIS DOCUMENT WITHOUT WRITTEN PERMISSION FROM GRANT HAYS ASSOCIATES IS PROHIBITED.

LICENSED ARCHITECT
MICHAEL F. HAYS
No. 1724
STATE OF MAINE

REVISIONS

NEW ADDITION FOR
ALLAGASH BREWING CO.
50 INDUSTRIAL WAY PORTLAND, MAINE

ARCHITECTURE
INTERIOR DESIGN
P.O. BOX 6179 FALMOUTH, MAINE 04105

SECOND FLOOR
FACILITY CODE
COMPLIANCE PLAN

SCALE 1/16" = 1'-0"

DATE 8/5/2014

DRAWN BY SAM/MF

JOB NO. 140560

DRAWING NO.
AC-2