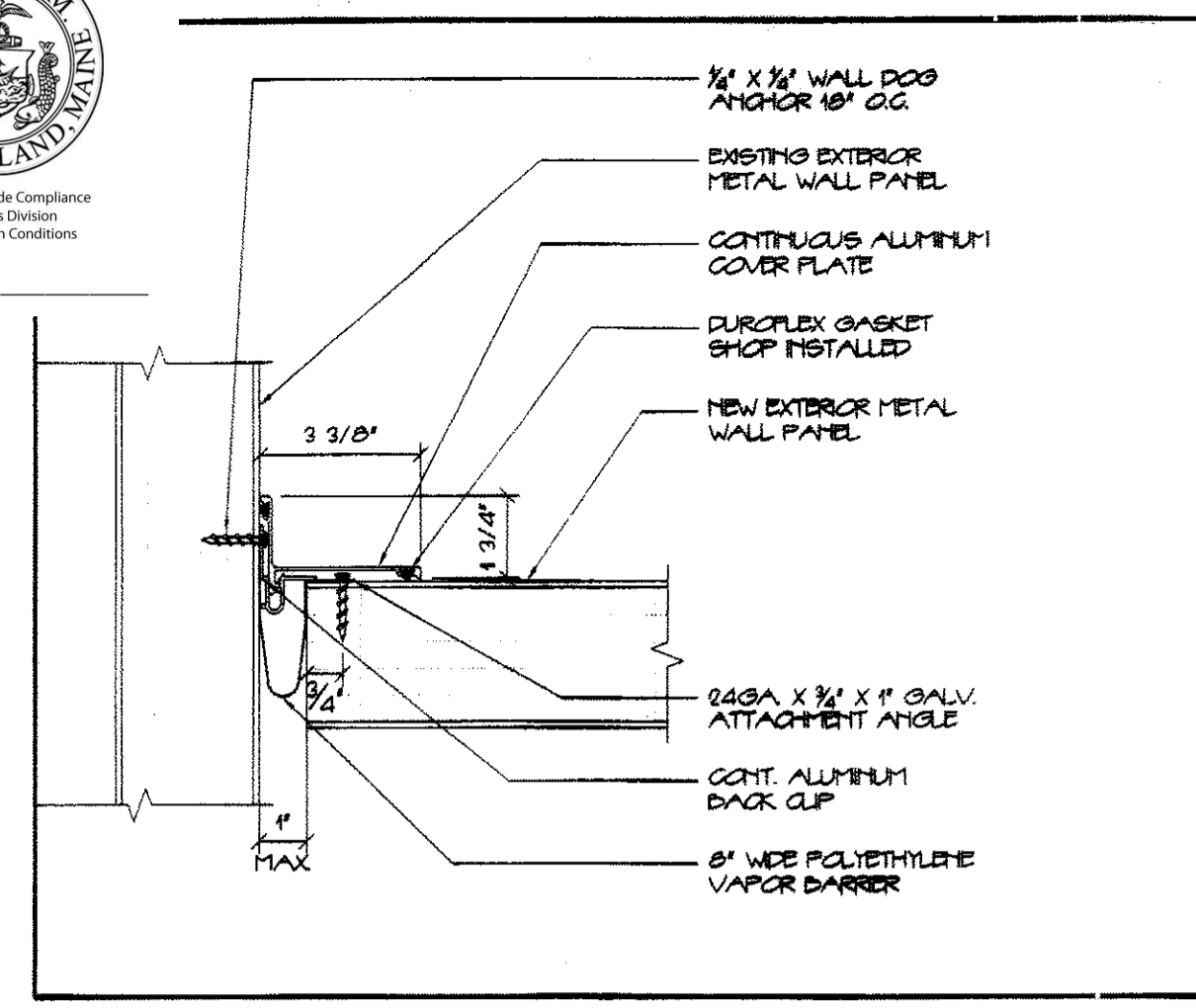
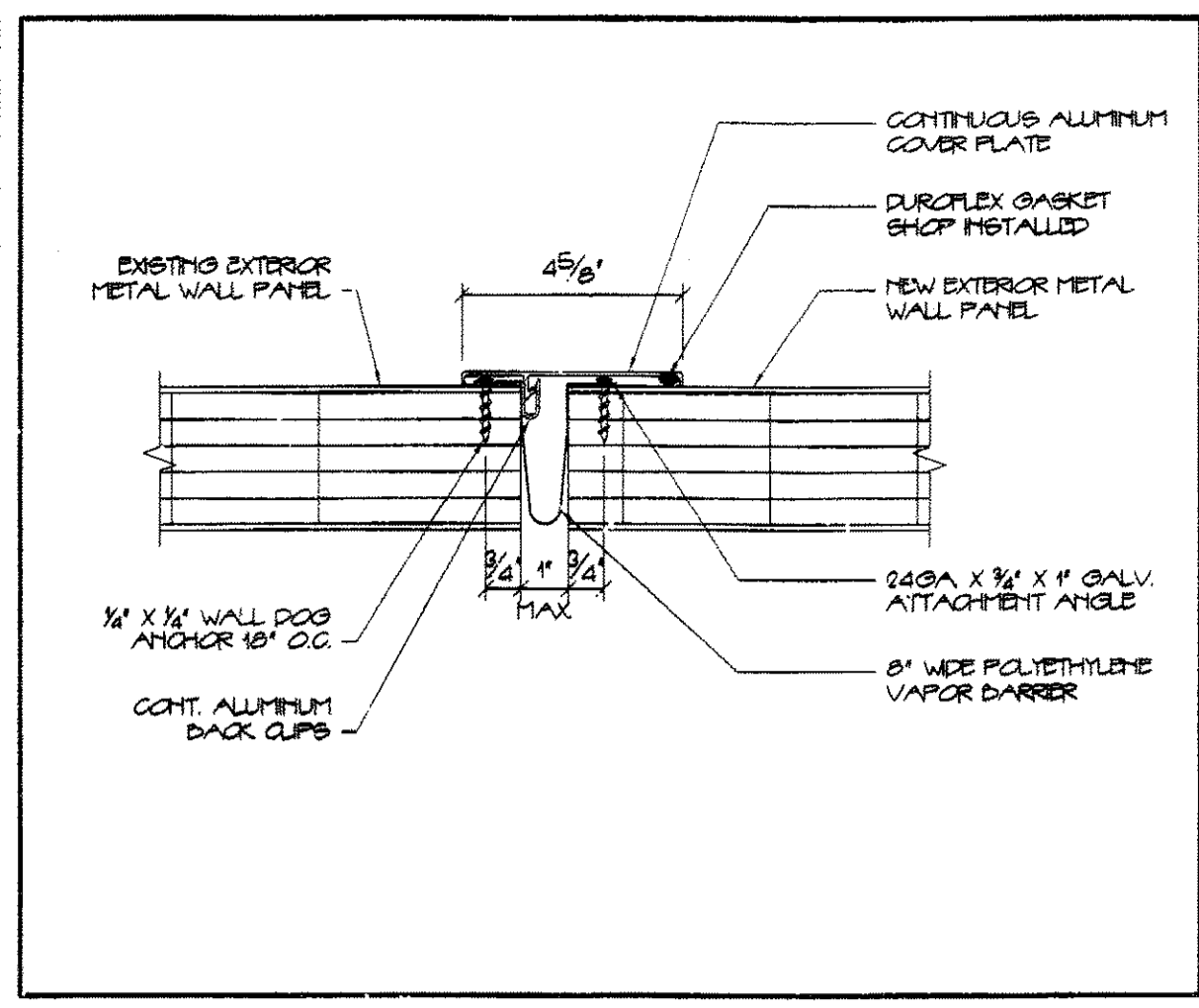




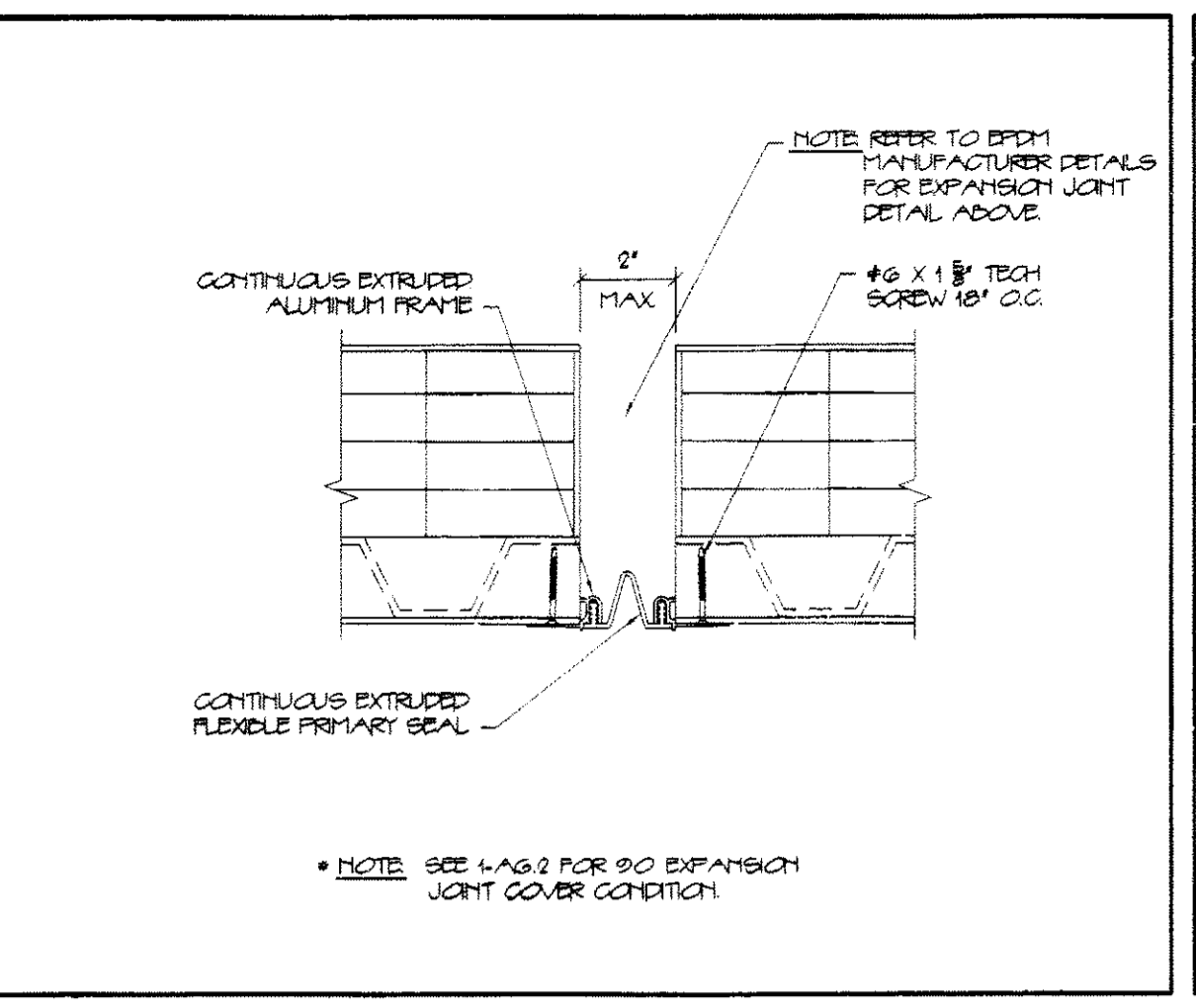
Reviewed for Code Compliance
Inspection Division
Approved with Conditions
Date: 09/15/14



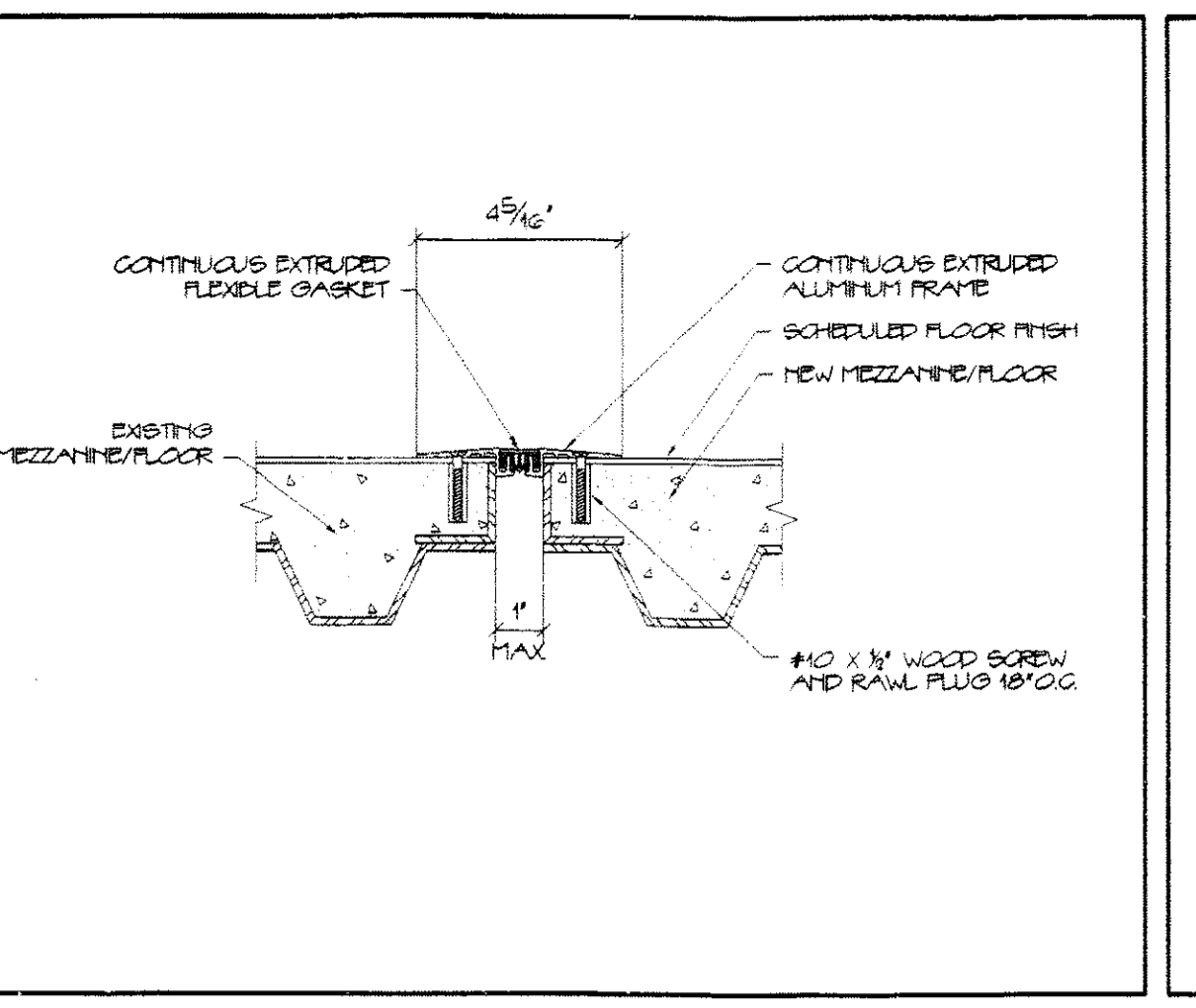
1 EXPANSION JOINT COVER @ CORNER N.T.S.



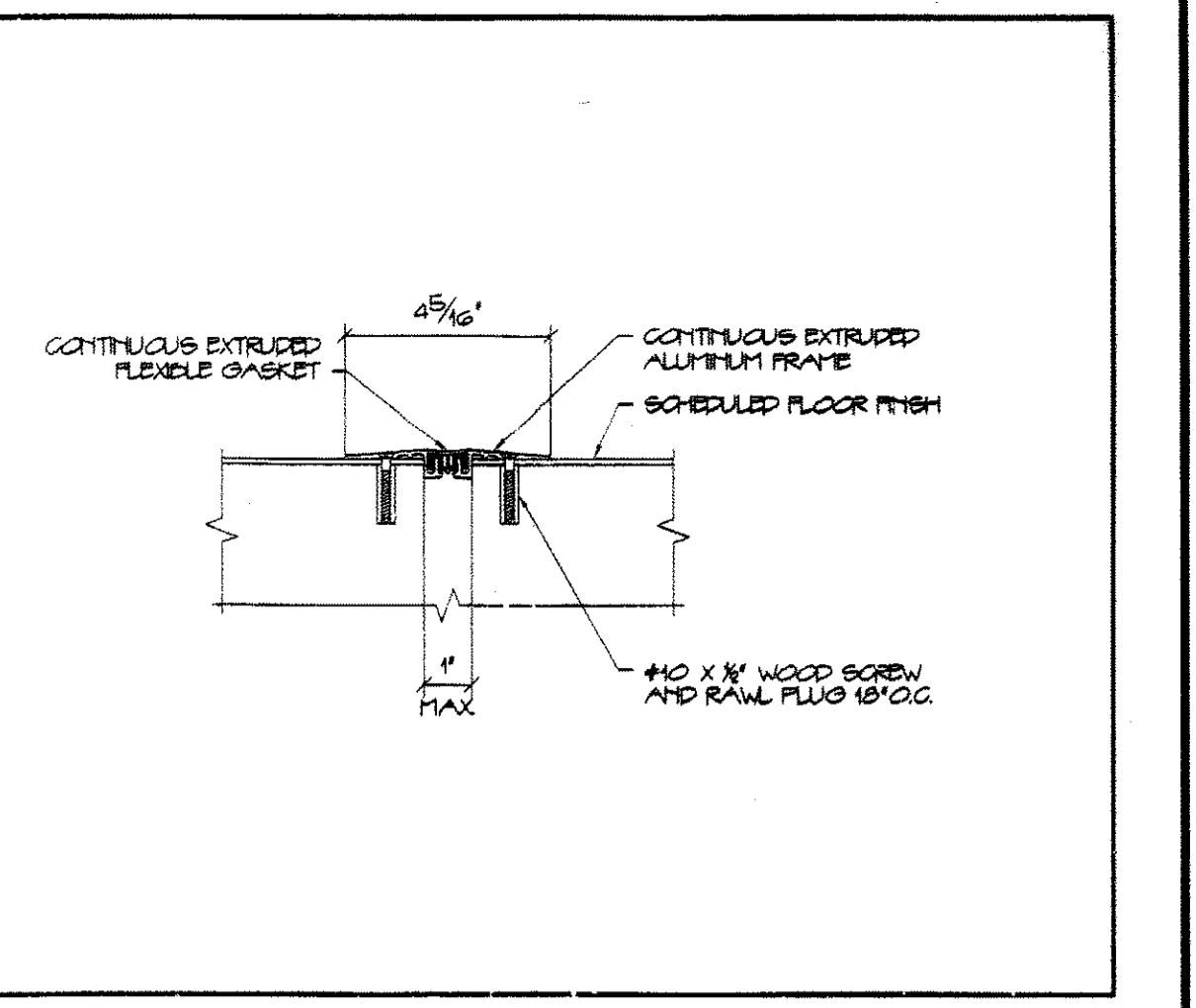
2 EXPANSION JOINT COVER AT PANEL WALLS N.T.S.



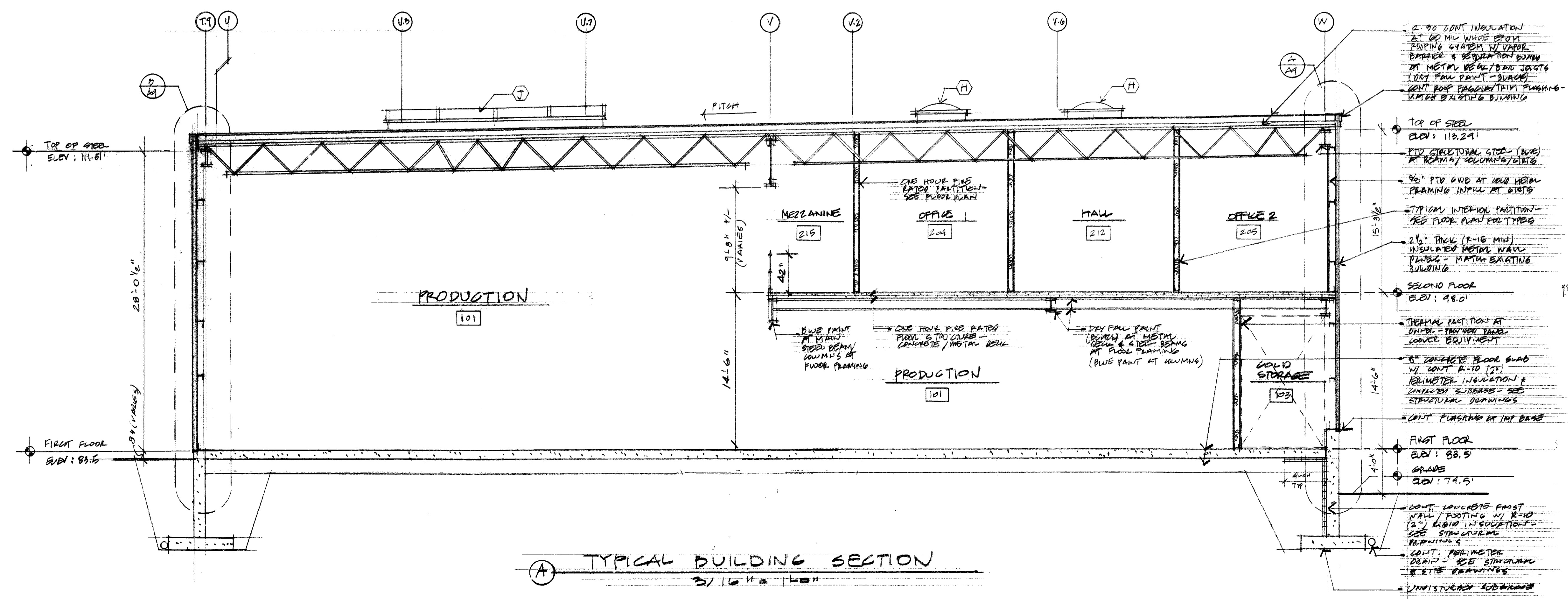
3 INTERIOR CEILING/WALL EXPANSION JOINT OVER N.T.S.



4 FLOOR EXPANSION JOINT COVER N.T.S.



5 FLOOR EXPANSION JOINT COVER N.T.S.



A TYPICAL BUILDING SECTION
3/16" = 1'-0"

GRANT HAYS ASSOCIATES
ARCHITECTURE & INTERIOR DESIGN
P.O. BOX 6179 FALMOUTH MAINE 04105
207.871.5900 www.granthays.com

LICENSED ARCHITECT
MICHAEL F. HAYS
No. 1724
STATE OF MAINE
Michael F. Hays
REV/09/14

DRAWING NAME

NEW ADDITION FOR
ALLAGASH BREWING CO.
50 INDUSTRIAL WAY PORTLAND, MAINE

MEET

BUILDING SECTION

DATE: 25 JULY 2014
SCALE: 3/16" = 1'-0"
DRAWN: MPH
JOB NO: 140560
MEET: A8

COPYRIGHT REPRODUCTION OR REVUE OF THIS DOCUMENT WITHOUT WRITTEN PERMISSION FROM GRANT HAYS ASSOCIATES IS PROHIBITED.