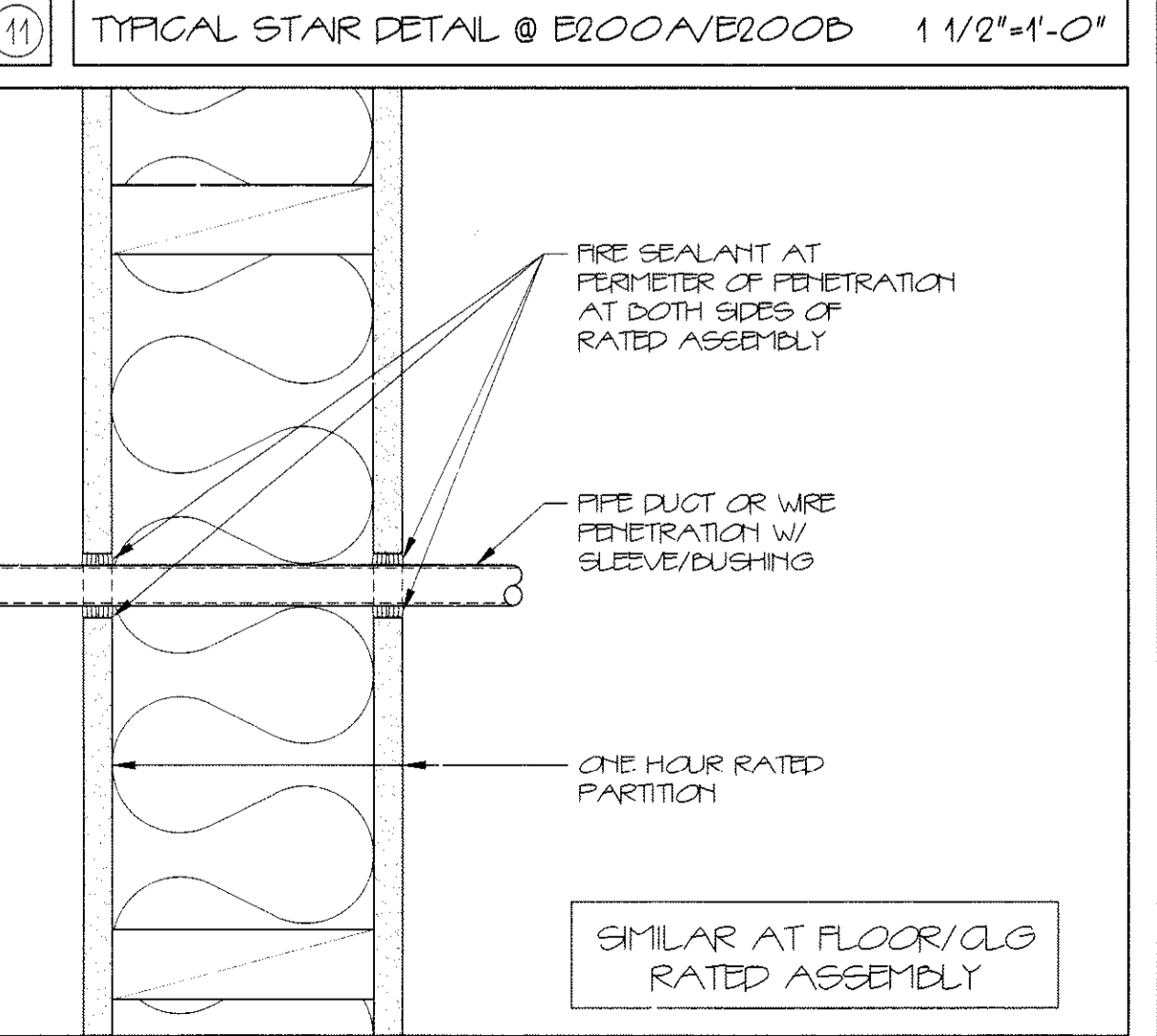
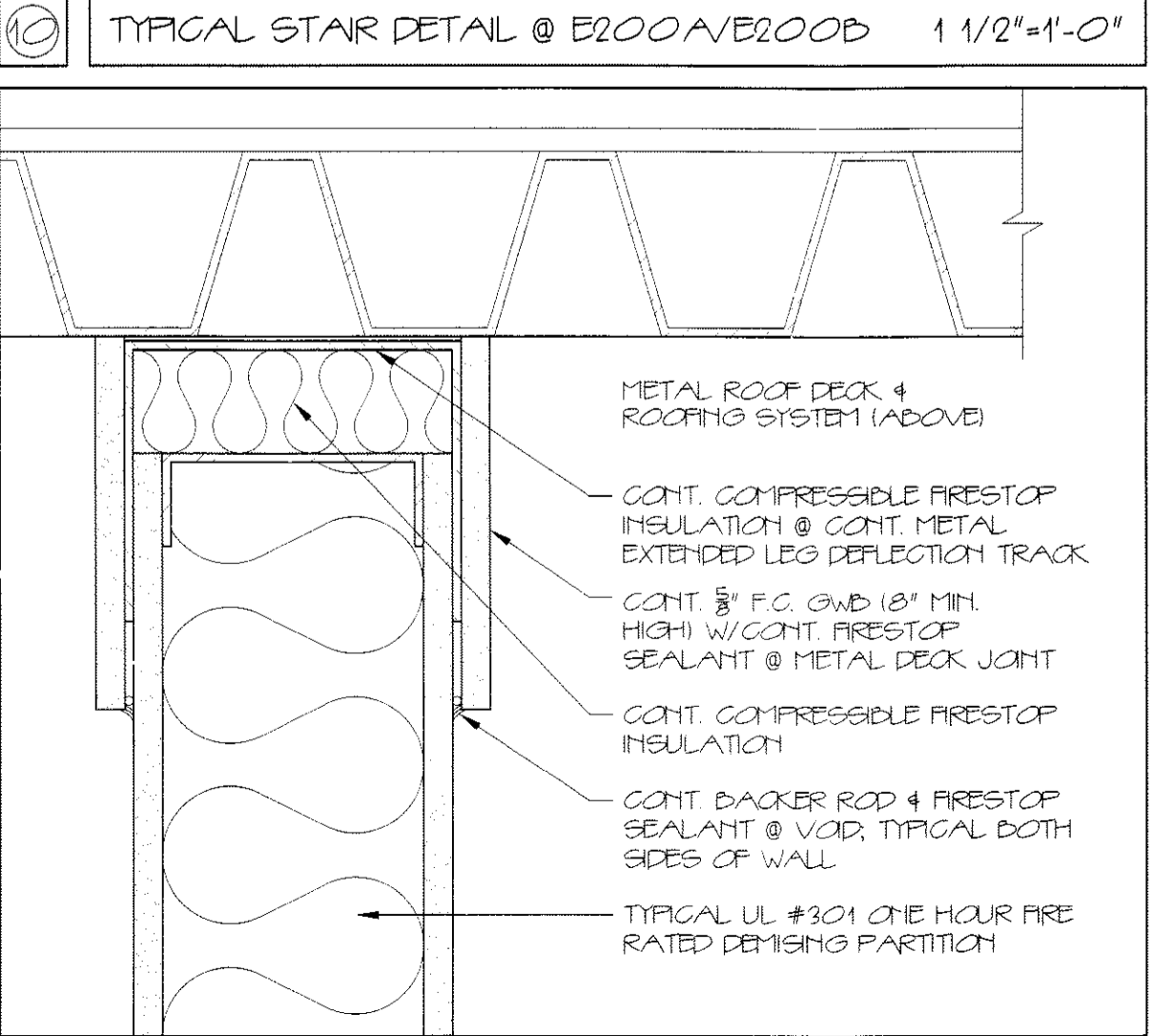
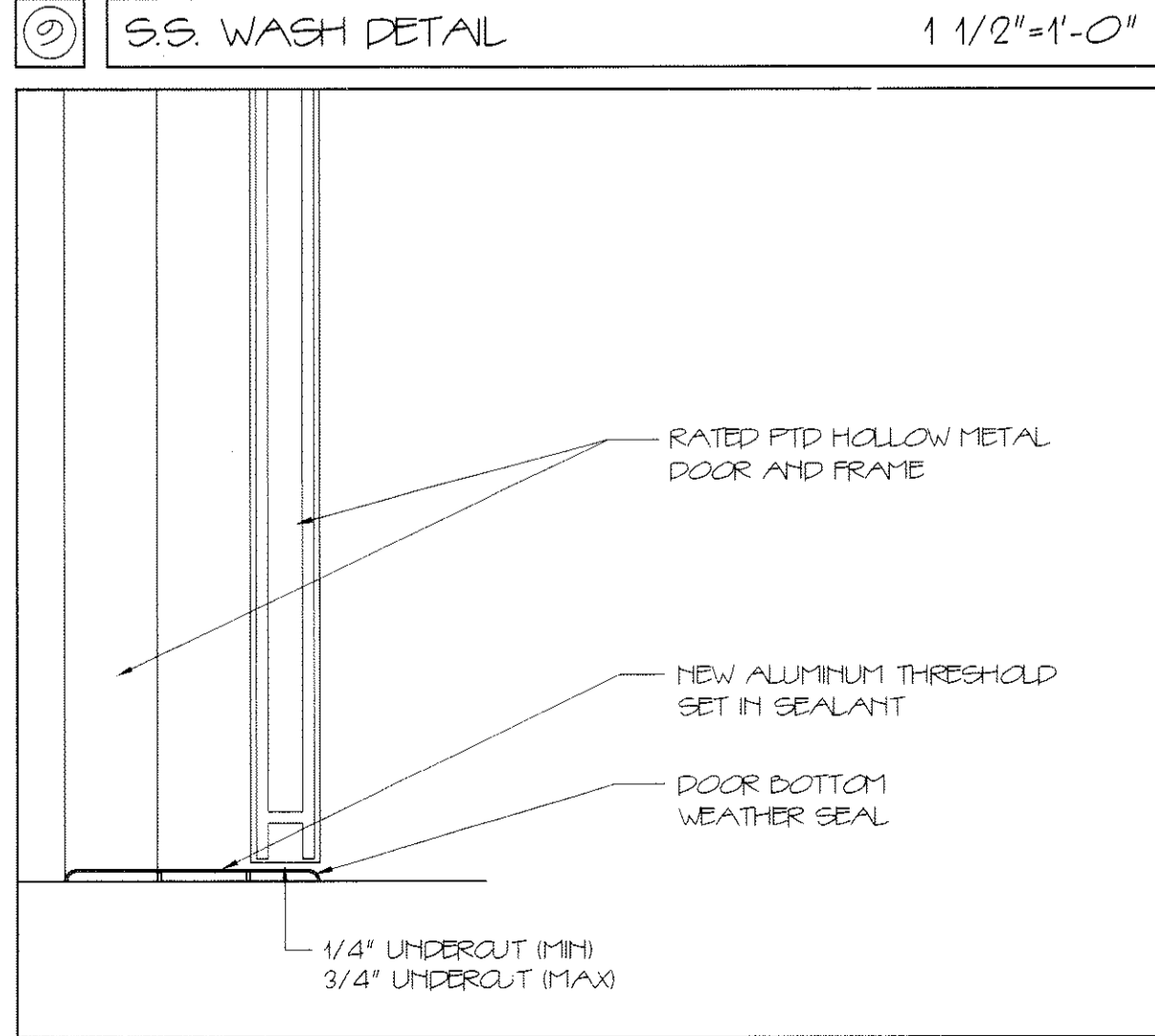
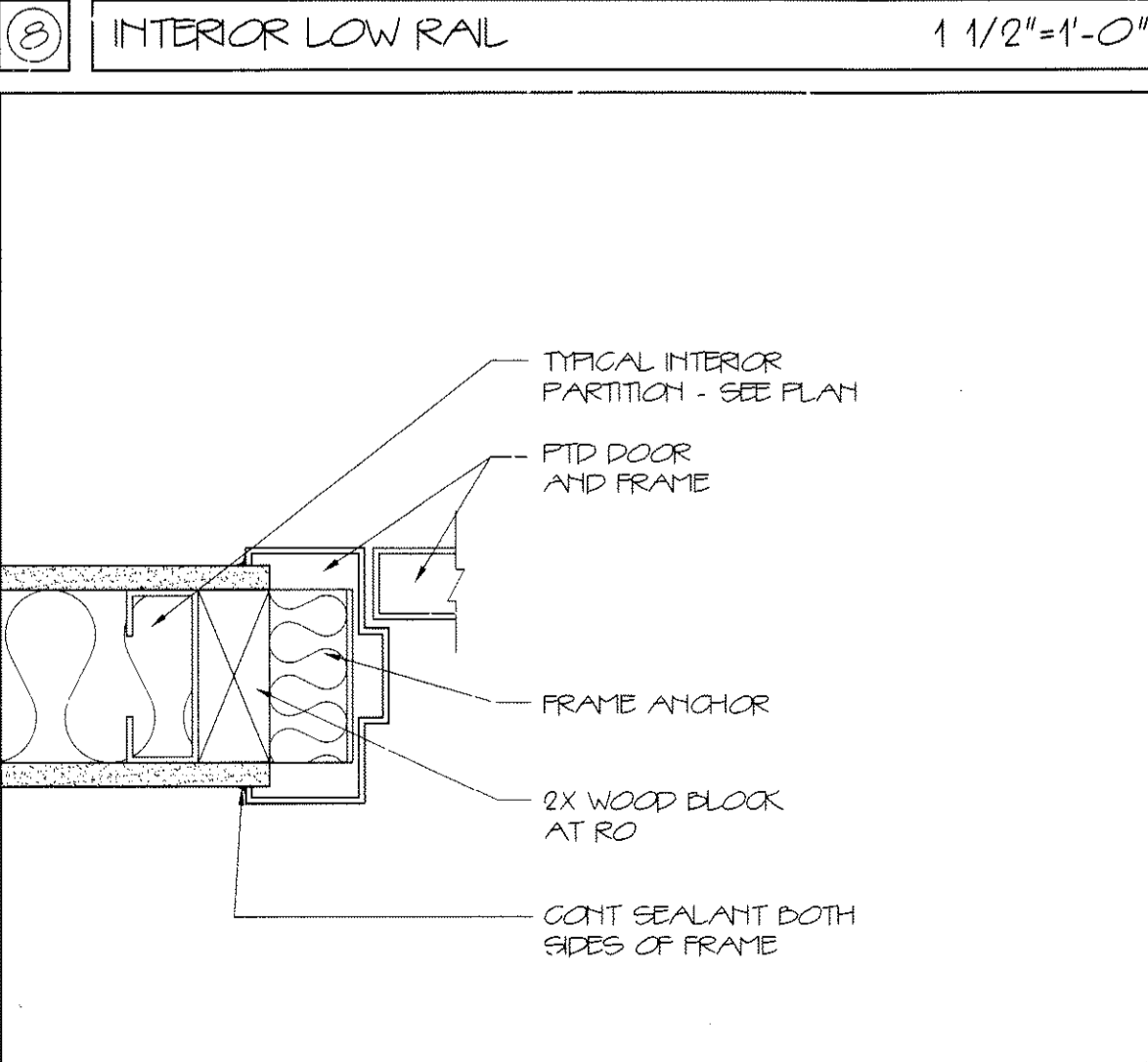
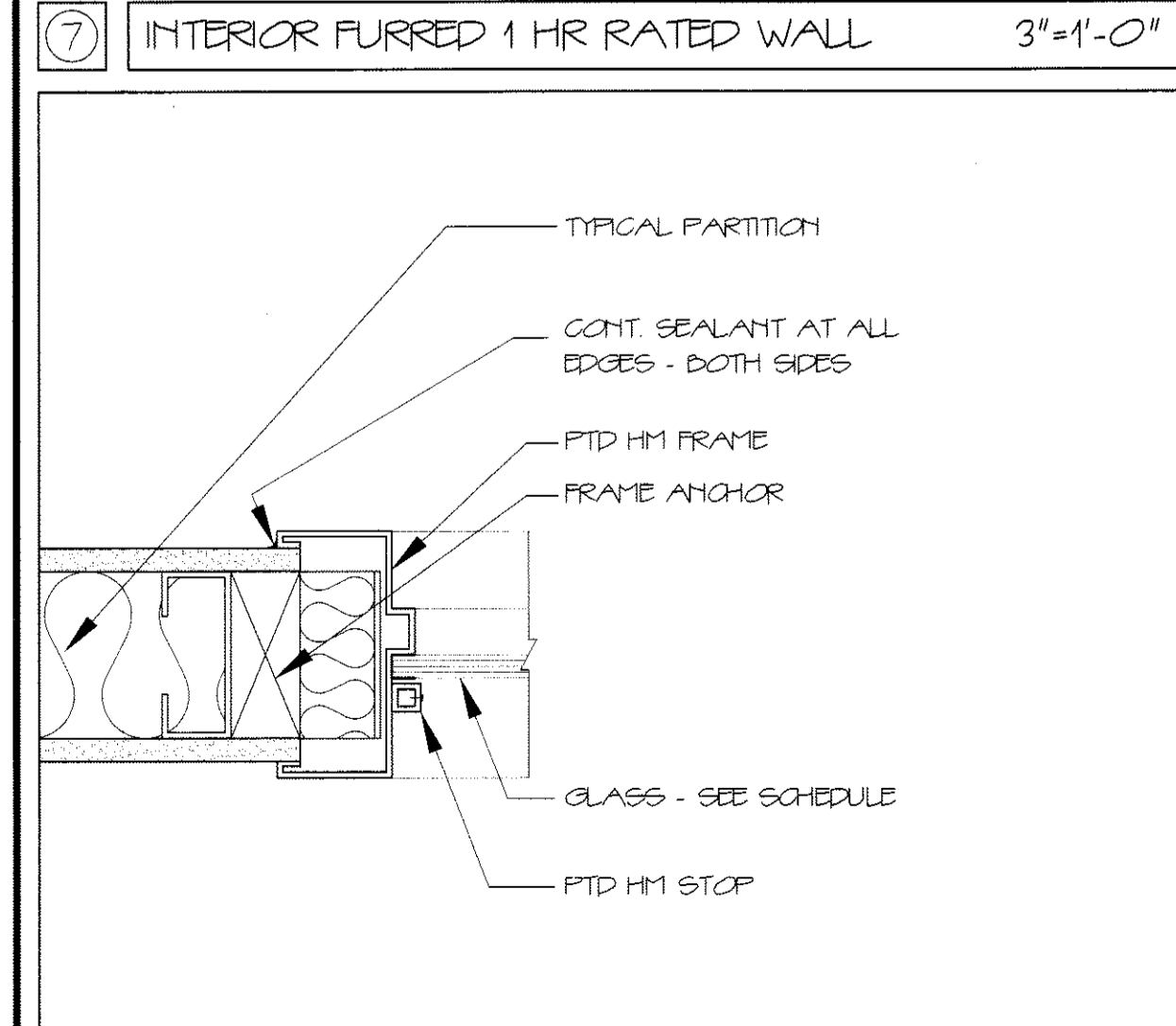
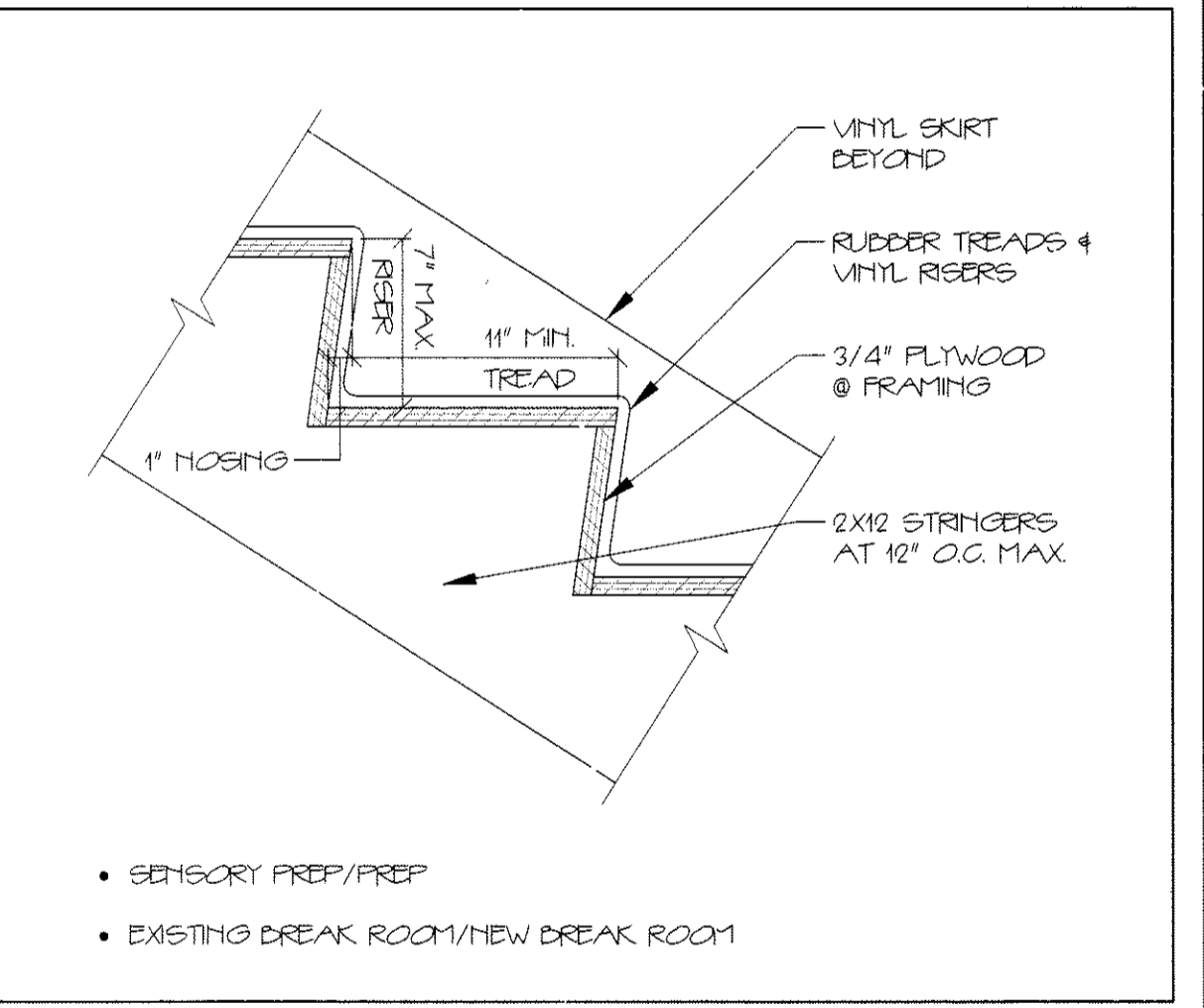
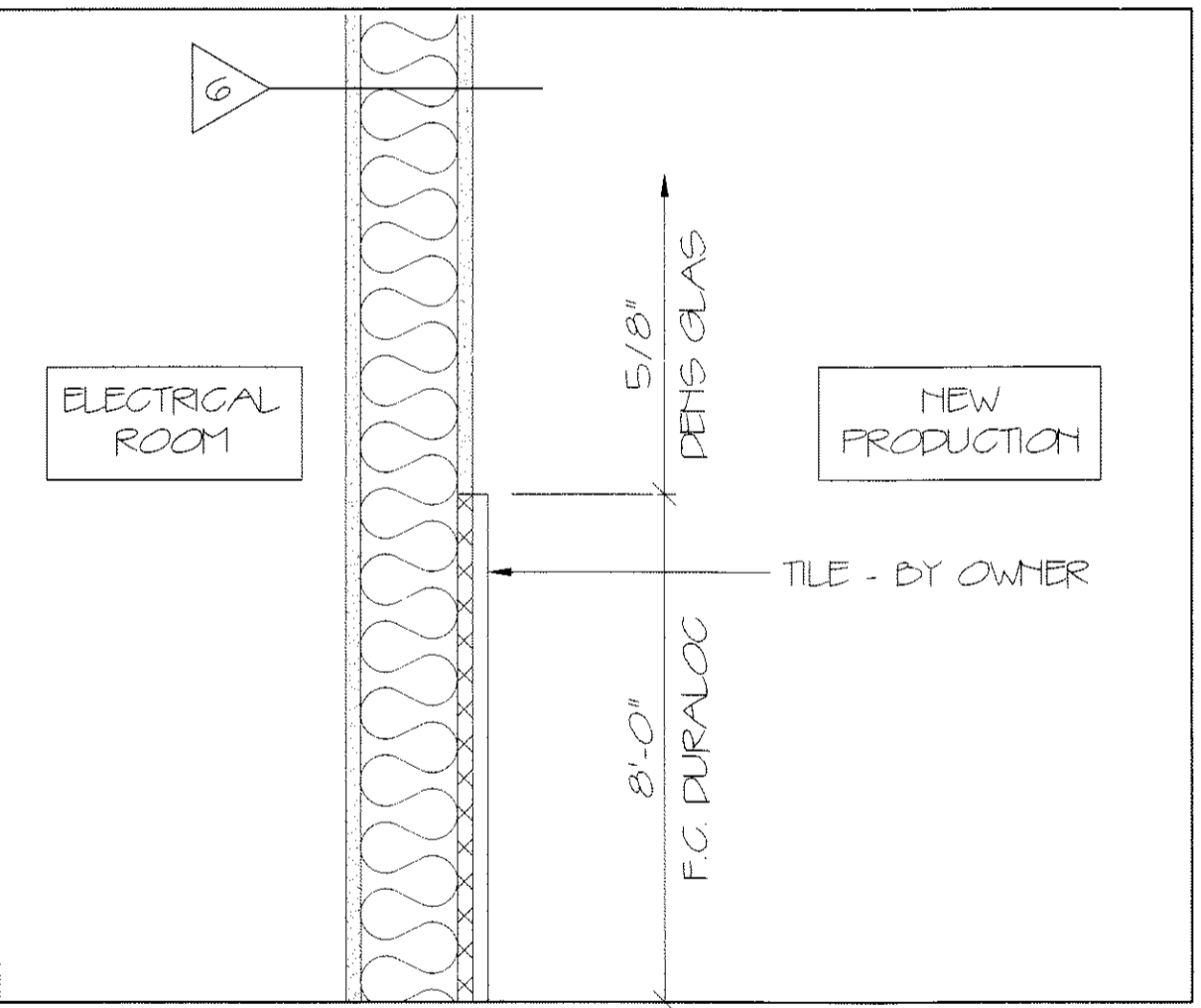
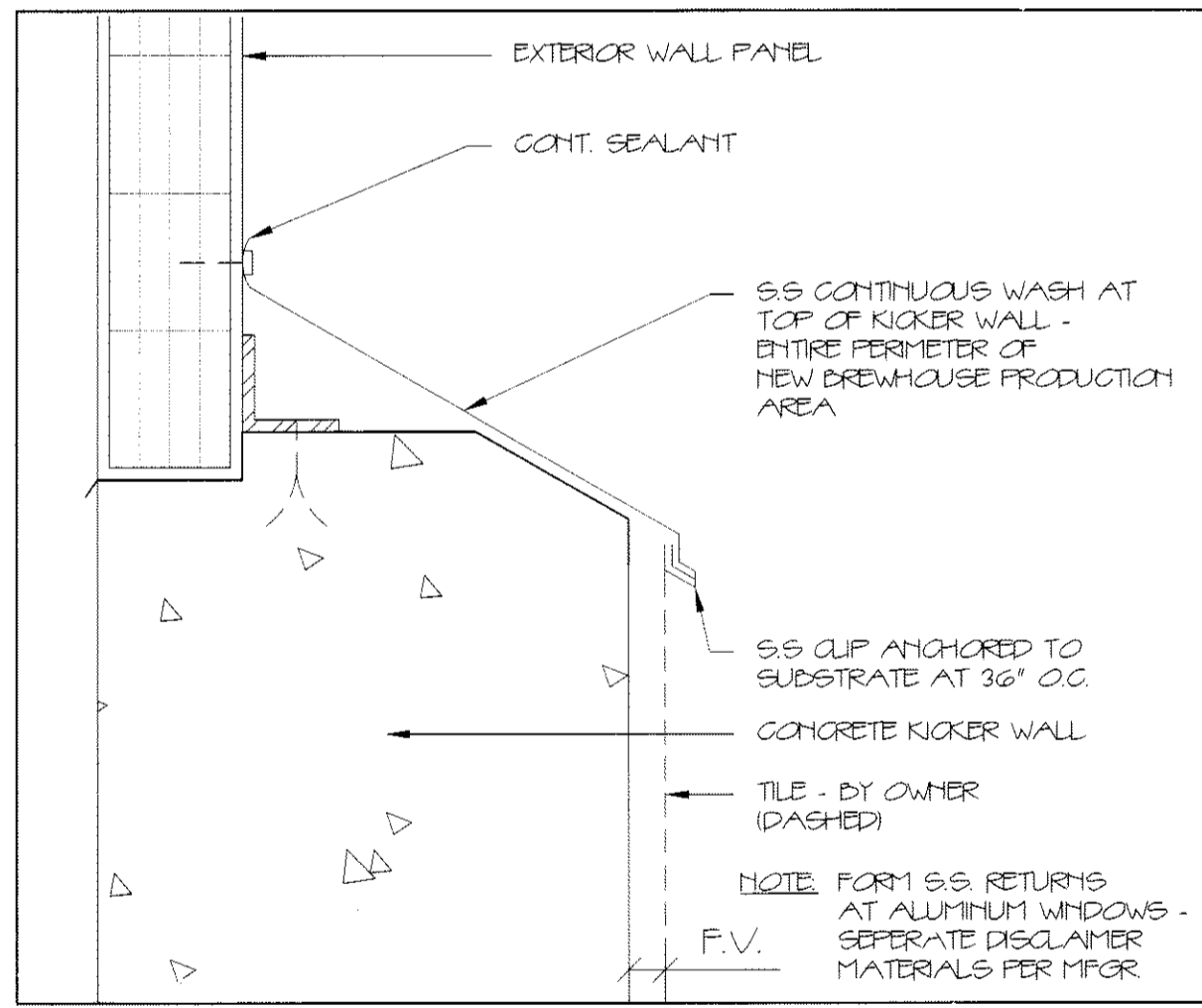
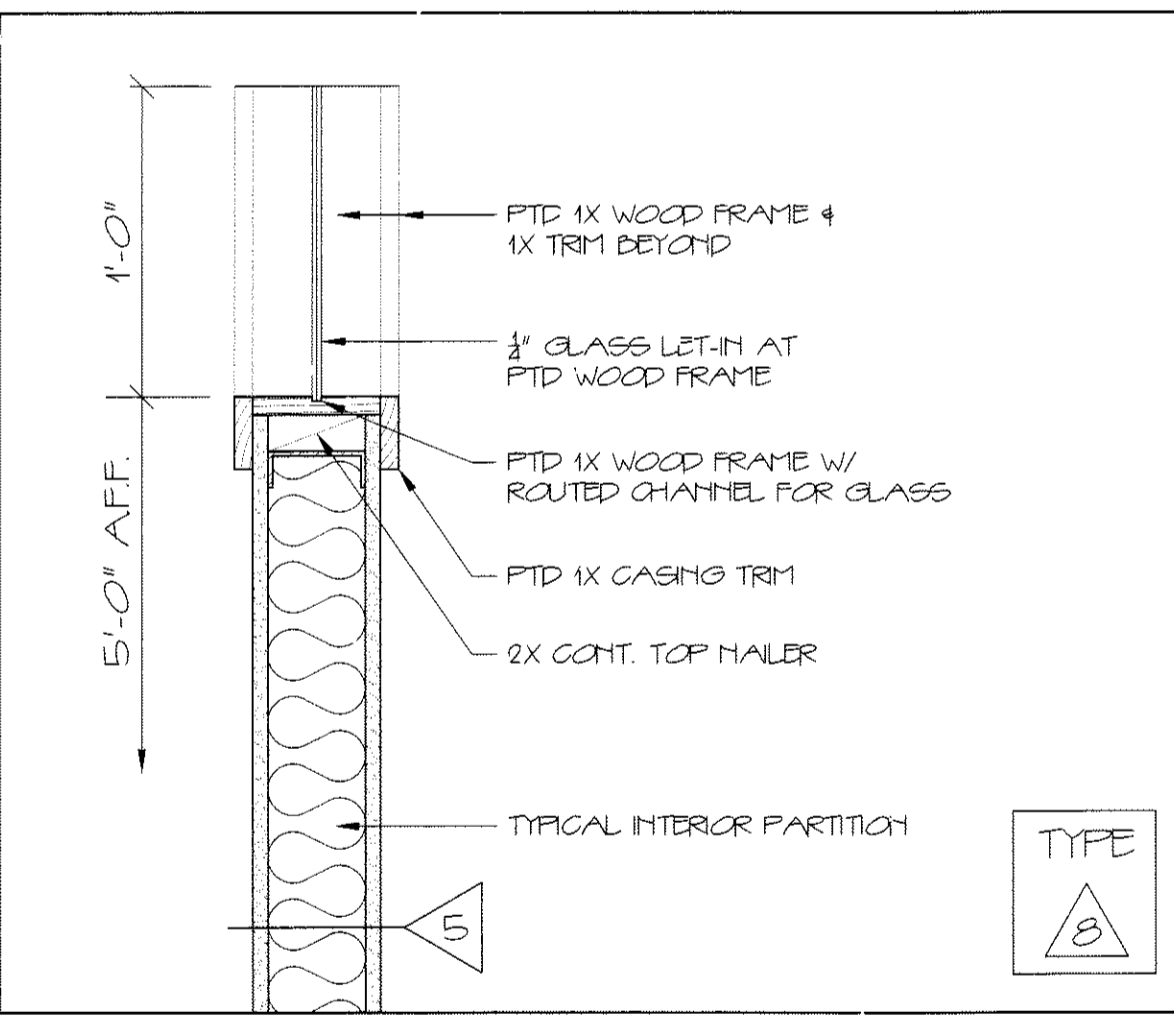
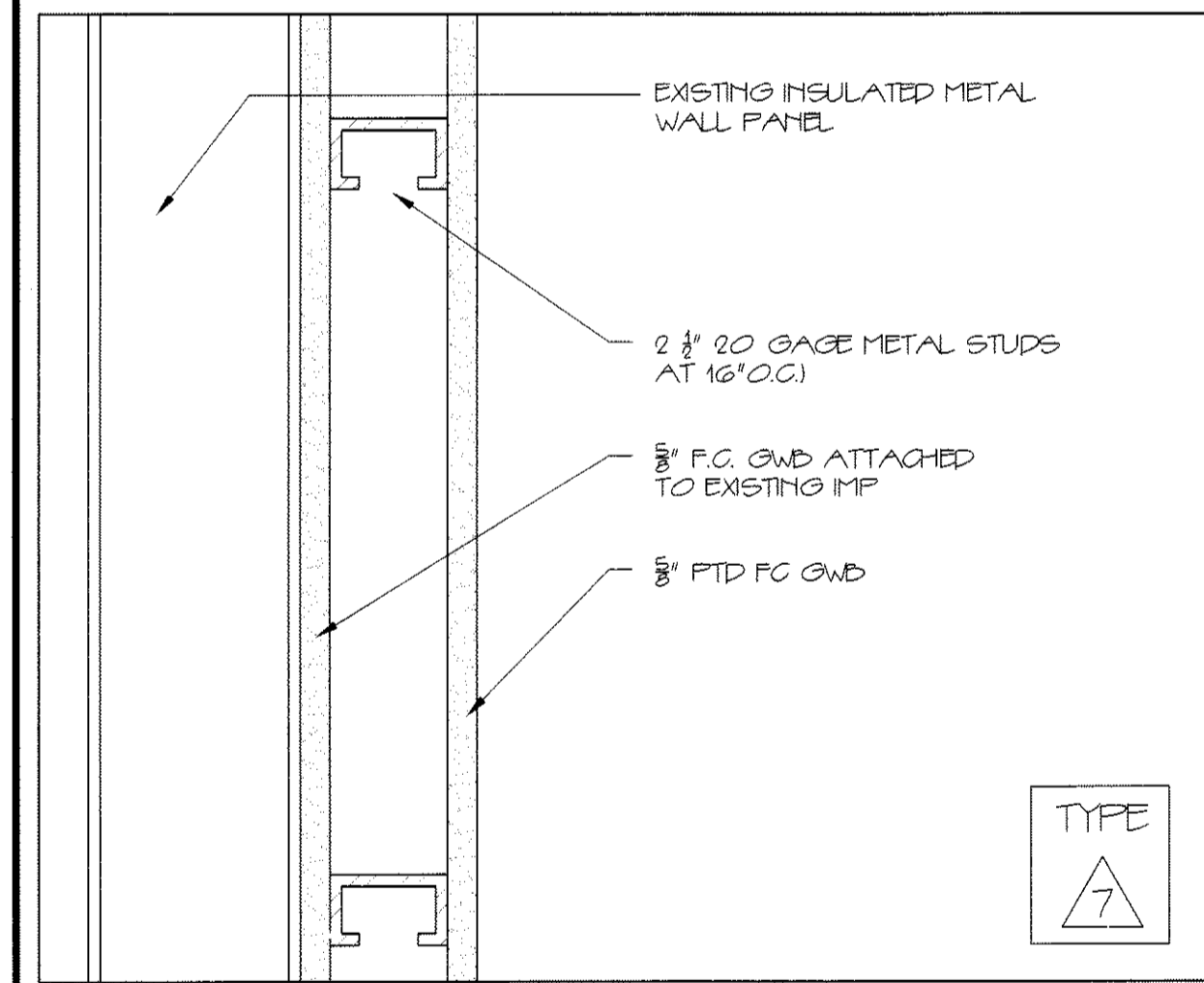
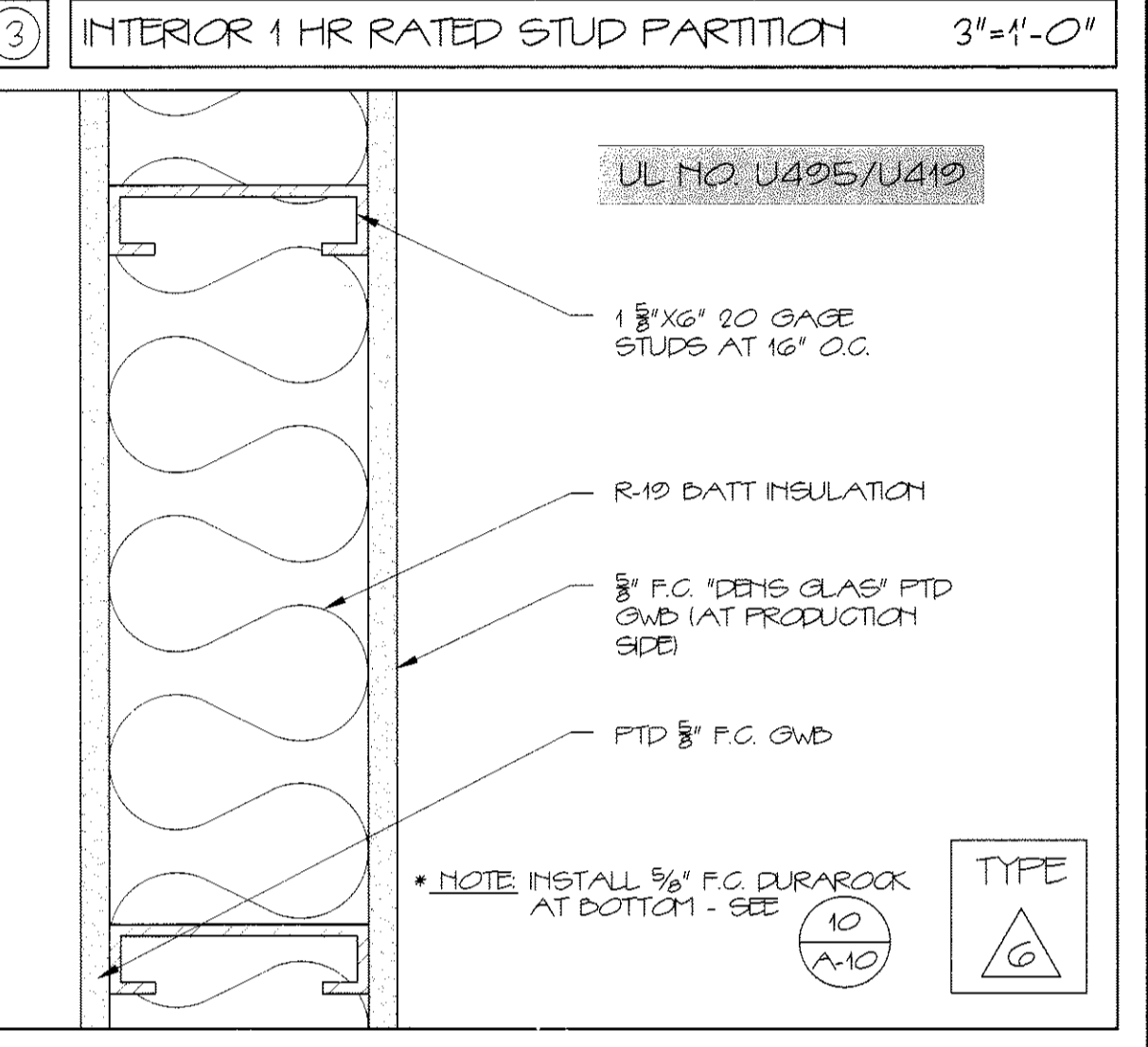
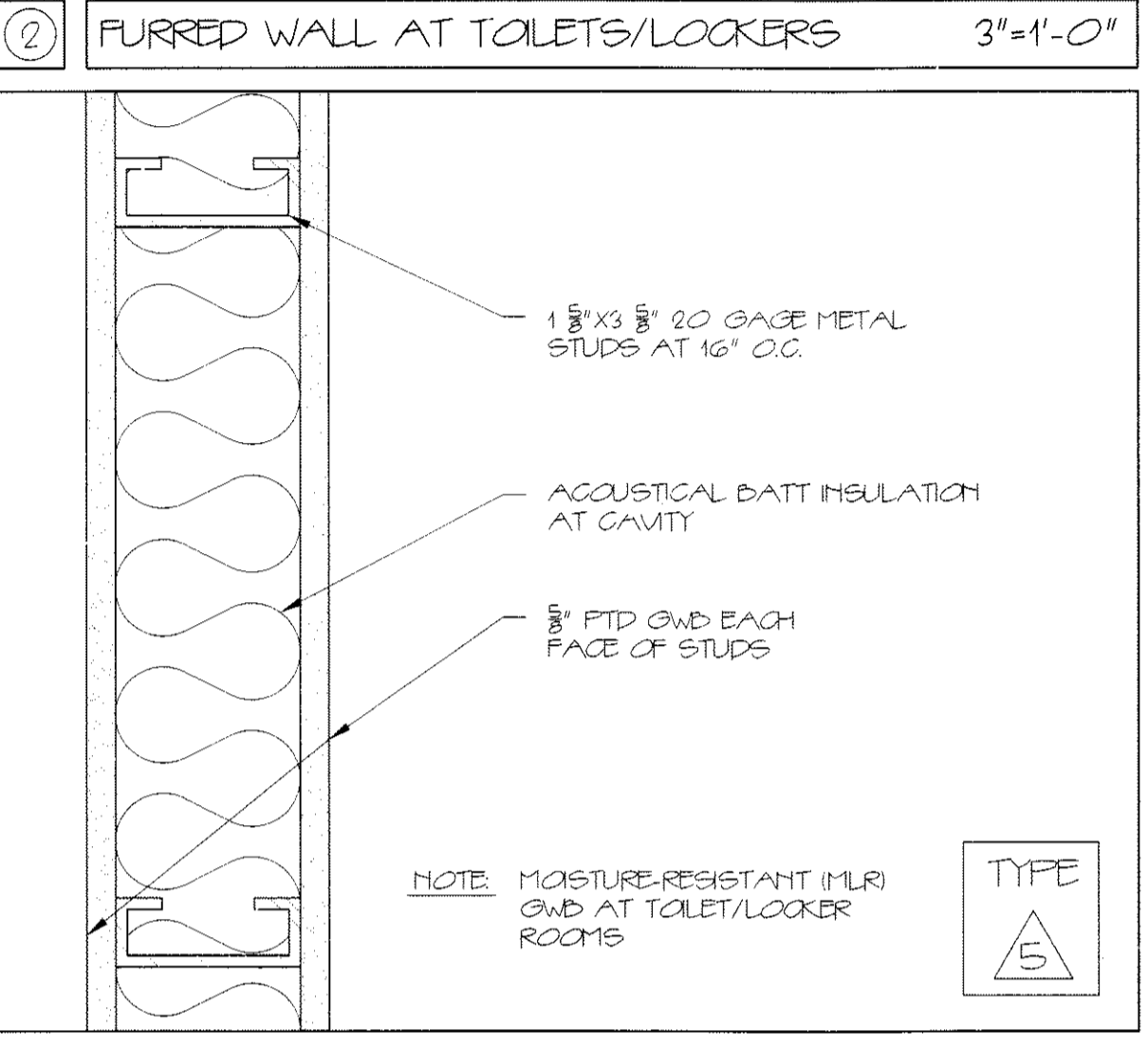
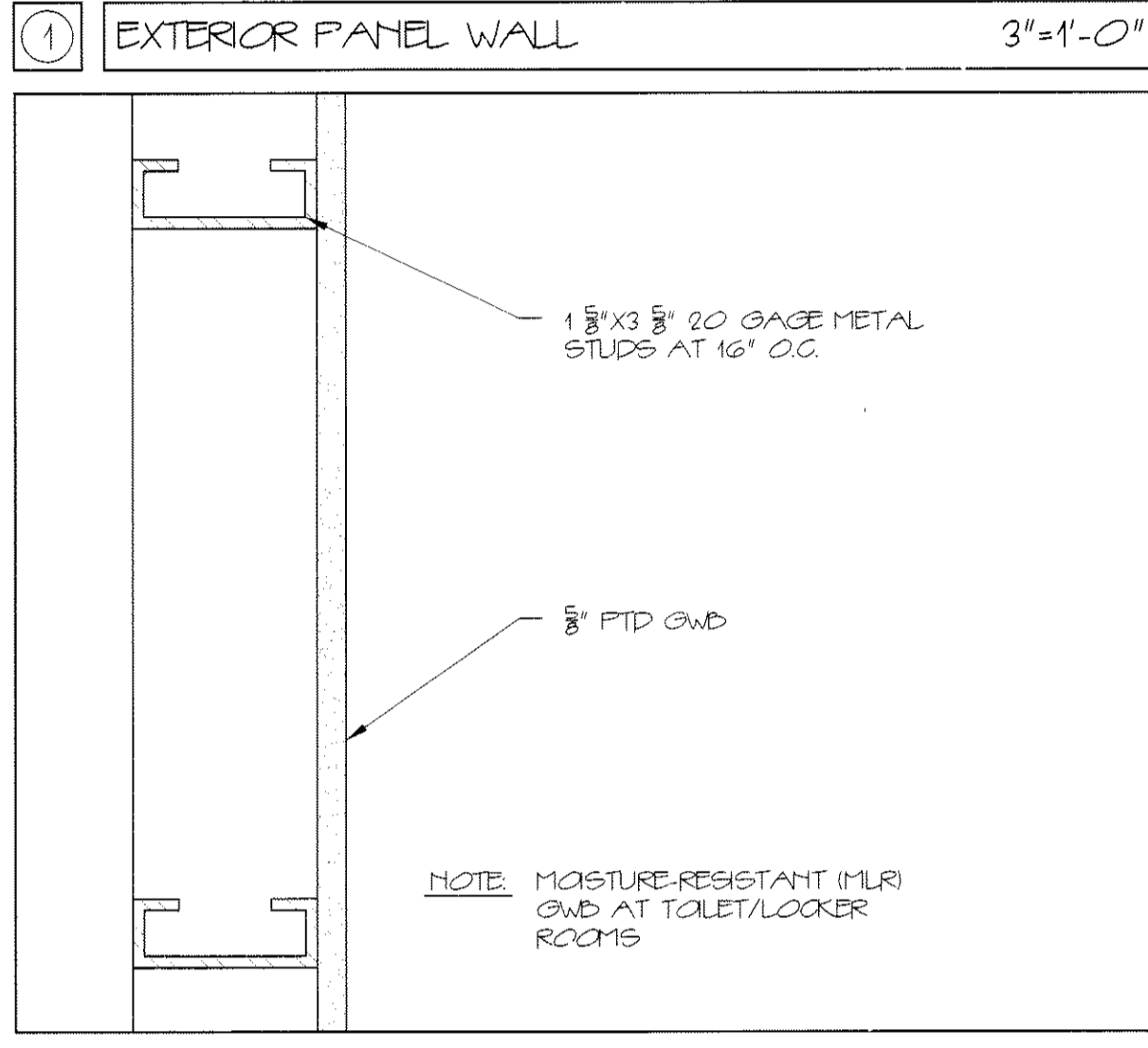
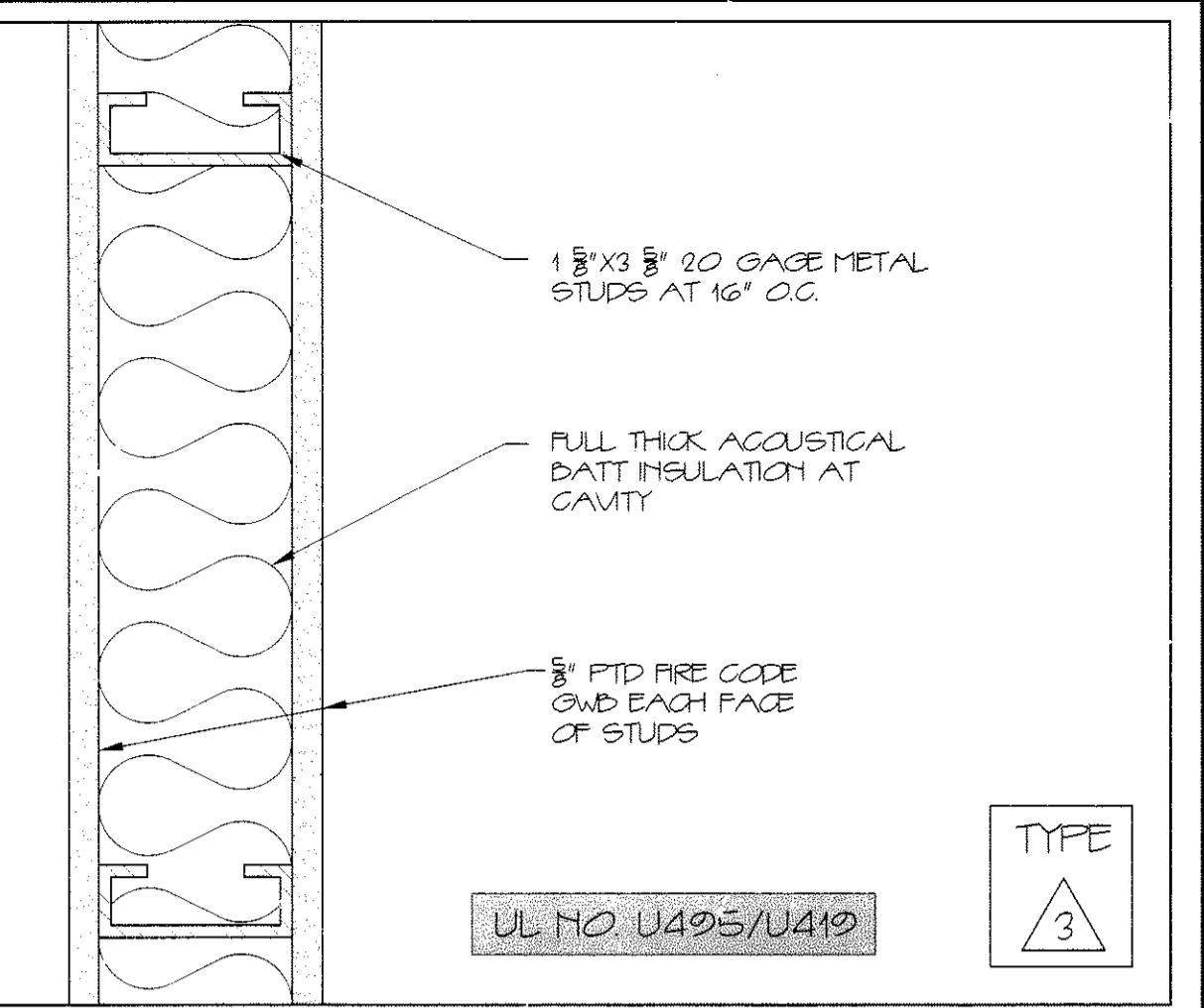
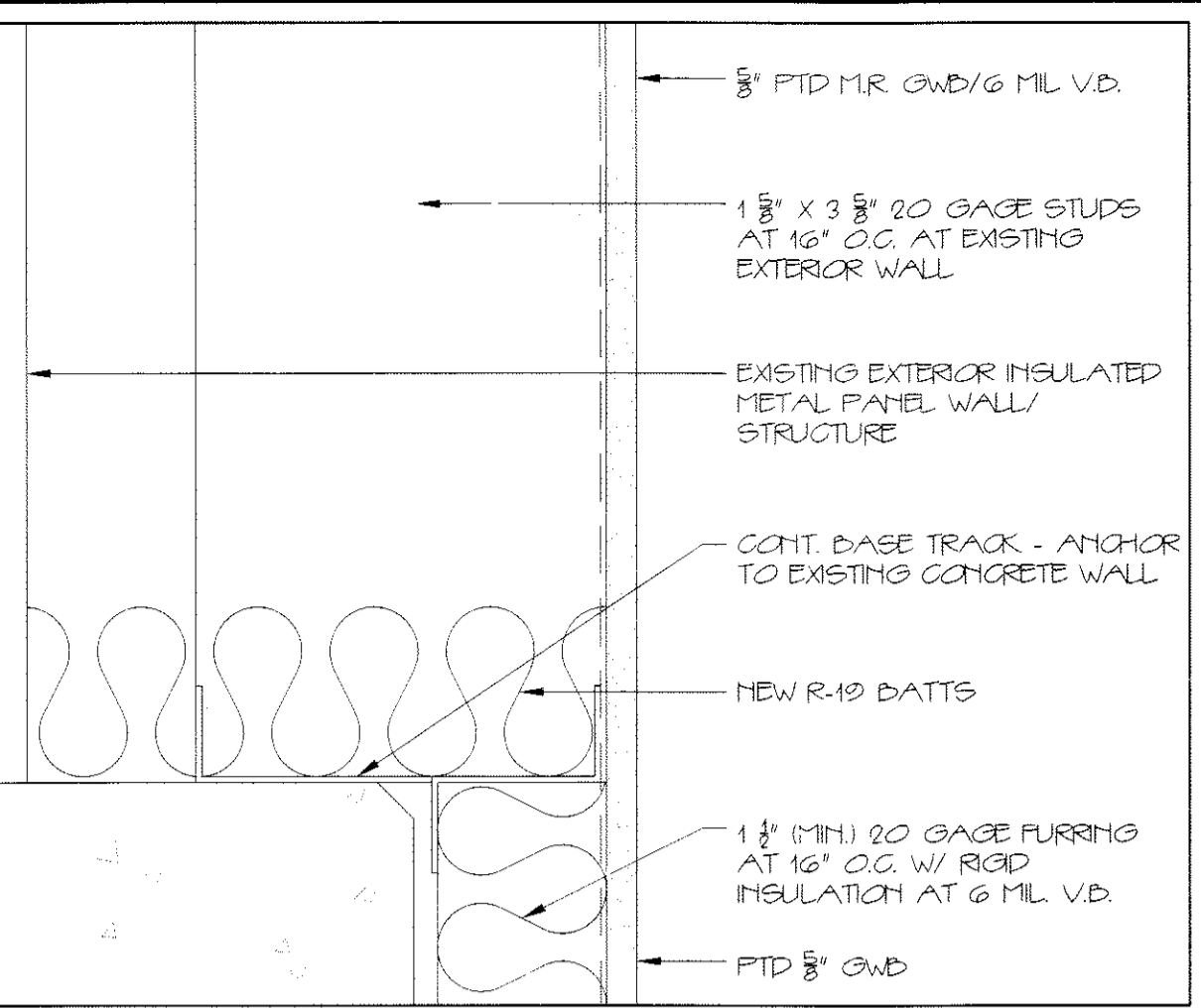
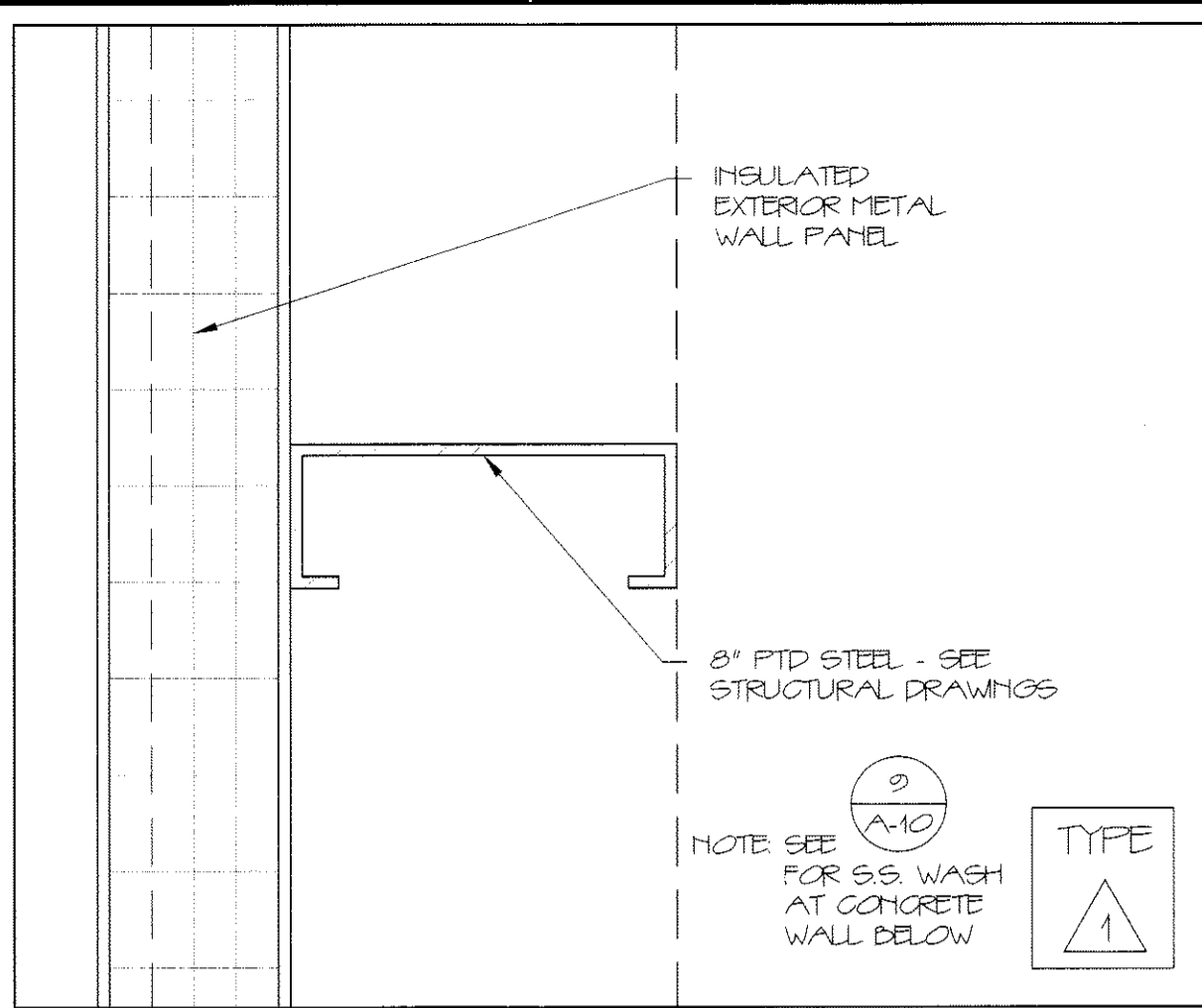




FINISH SCHEDULE

ABBREVIATIONS		ABBREVIATIONS	
C	CONCRETE	RV	RUBBER GLOVE BASE
CH	CONCRETE W/ HARDENOR	GL	GLASS
CHU	CONCRETE W/ HARDENOR UNIT	GD	GYP DRY WALL BOARD
CT	CERAMIC TILE	MF	MESH METAL PANEL
DB	DWINDLING	P	PAINT
EP	EPOXY PAINT	PS	PAINT STRUCTURE
FRF	FIBERGLASS REINFORCED PANELS	OP	OPERABLE PARTITION

I.D.	NAME	WALLS				FLOOR				CLG A		CLG B		REMARKS	
		N	E	S	W	MATL	BASE	MATL	BASE	TYPE	HT	TYPE	HT		
101	PRODUCTION	PS/MF	PS/MF	PS/MF	PS/MF	P-GWD	TILE	TILE	CH	C	PS	VARIABLES	PS	14'-6"	* SEPEC. PER OWNER
102	LAD	P-GWD	P-GWD	PS/MF	PS/MF	CH	VP	-	-	-	PS	14'-6"	-	-	
103	COLD STORAGE	P-GWD	PS/MF	PS/MF	PS/MF	CH	VP	-	-	-	PS	14'-6"	-	-	
104	ELECTRICAL ROOM	P-GWD	P-GWD	P-GWD	PS/MF	CH	VP	-	-	-	PS	14'-6"	-	-	* SEE ELEC. DWGS. FOR BACKERS
105	UNIFORMS	P-GWD	PS/MF	P-GWD	PS/MF	CH	VP	-	-	-	P-GWD	8'-0"	-	-	* 1/2" MDO @ (E) WALL
106	MEN'S TOILETS	(E)P	P-GWD	(E)P	(E)P	(E)CH	VP	-	-	(E)P	(E)	-	-	-	NEW PAINT @ WALLS/CLG
107	MEN'S LOCKERS	(E)P	P-GWD	(E)P	(E)P	(E)CH	VP	-	-	(E)P	(E)	-	-	-	NEW PAINT @ WALLS/CLG
108	WOMEN'S TOILET/LOCKERS	(E)P	P-GWD	(E)P	(E)P	(E)CH	VP	-	-	(E)P	(E)	-	-	-	NEW PAINT @ WALLS/CLG
200A	EXIST. BREAK ROOM	(E)P	(E)P	(E)P	(E)P	(E)	VD	-	-	(E)	(E)	-	-	-	
200B	SENSORY PREP	(E)P	(E)P	(E)	(E)P	(E)VTG	VD	-	-	(E)	(E)	-	-	-	* NEW FINISHES @ STAIRS
201	NEW BREAK ROOM	P-GWD	P-GWD	P-GWD	P-GWD	G-TILE	VD	-	-	PS	15'-0" (1/2)	-	-	-	
202	PREP	P-GWD	P-GWD	PS/MF	PS/MF	CH	VD	-	-	PS	15'-0" (1/2)	-	-	-	
203	SENSORY BOOTHS	P-GWD	P-GWD	PS/MF	P-GWD	CH	VD	-	-	PS	15'-0" (1/2)	-	-	-	
204	OFFICE 1	P-GWD	P-GWD	P-GWD	P-GWD	G-TILE	VD	-	-	PS	15'-0" (1/2)	-	-	-	
205	OFFICE 2	P-GWD	P-GWD	PS/MF	P-GWD	G-TILE	VD	-	-	PS	15'-0" (1/2)	-	-	-	
206	OFFICE 3	P-GWD	P-GWD	PS/MF	P-GWD	G-TILE	VD	-	-	PS	15'-0" (1/2)	-	-	-	
207	OFFICE 4	P-GWD	P-GWD	PS/MF	P-GWD	G-TILE	VD	-	-	PS	15'-0" (1/2)	-	-	-	
208	MARKETING	P-GWD	P-GWD	P-GWD	P-GWD	G-TILE	VD	-	-	PS	15'-0" (1/2)	-	-	-	
209	CONFERENCE	P-GWD	P-GWD	P-GWD	P-GWD	G-TILE	VD	-	-	PS	15'-0" (1/2)	-	-	-	
210	CONFERENCE	P-GWD	P-GWD	P-GWD	P-GWD	G-TILE	VD	-	-	PS	15'-0" (1/2)	-	-	-	
211	SALES	P-GWD	PS/MF	PS/MF	P-GWD	G-TILE	VD	-	-	PS	15'-0" (1/2)	-	-	-	
212	HALL	P-GWD	P-GWD	P-GWD	P-GWD	G-TILE	VD	-	-	PS	15'-0" (1/2)	-	-	-	
213	IT	P-GWD	P-GWD	P-GWD	P-GWD	G-TILE	VD	-	-	PS	15'-0" (1/2)	-	-	-	
214	VESTIBULE	P-GWD	P-GWD	P-GWD	P-GWD	CH	VD	-	-	PS	15'-0" (1/2)	-	-	-	
215	MEZZANINE	P-GWD	P-GWD	P-GWD	P-GWD	CH	VD	-	-	PS	15'-0" (1/2)	-	-	-	



HAYSON ARCHITECTURE
 ARCHITECTURE INTERIOR DESIGN
 P.O. BOX 6179 FALMOUTH, MAINE 04105
 TEL: (207) 871-5900 FAX: (207) 871-9308
 WWW.HAYSONARCHITECTURE.COM

NEW ADDITION FOR
 ALLAGASH BREWING CO.
 50 INDUSTRIAL WAY PORTLAND, MAINE

LICENSED ARCHITECT
 MICHAEL F. HAYS
 No. 1724
 STATE OF MAINE

REVISIONS

SCALE AS NOTED
 DATE 7/25/2014
 DRAWN BY MPH/SAM
 JOB NO. 140560
 DRAWING NO.

DRAWING TITLE
 DETAILS

A-10