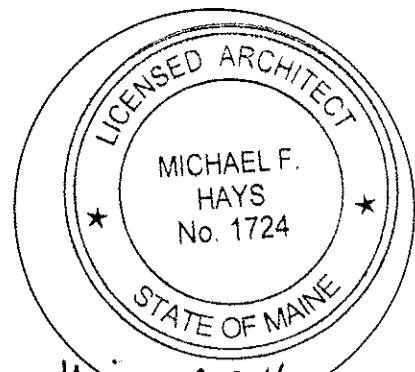


REPRODUCTION OR MISUSE OF THIS DOCUMENT WITHOUT WRITTEN PERMISSION FROM GRANT HAYS ASSOCIATES IS PROHIBITED.



Michael F. Hays

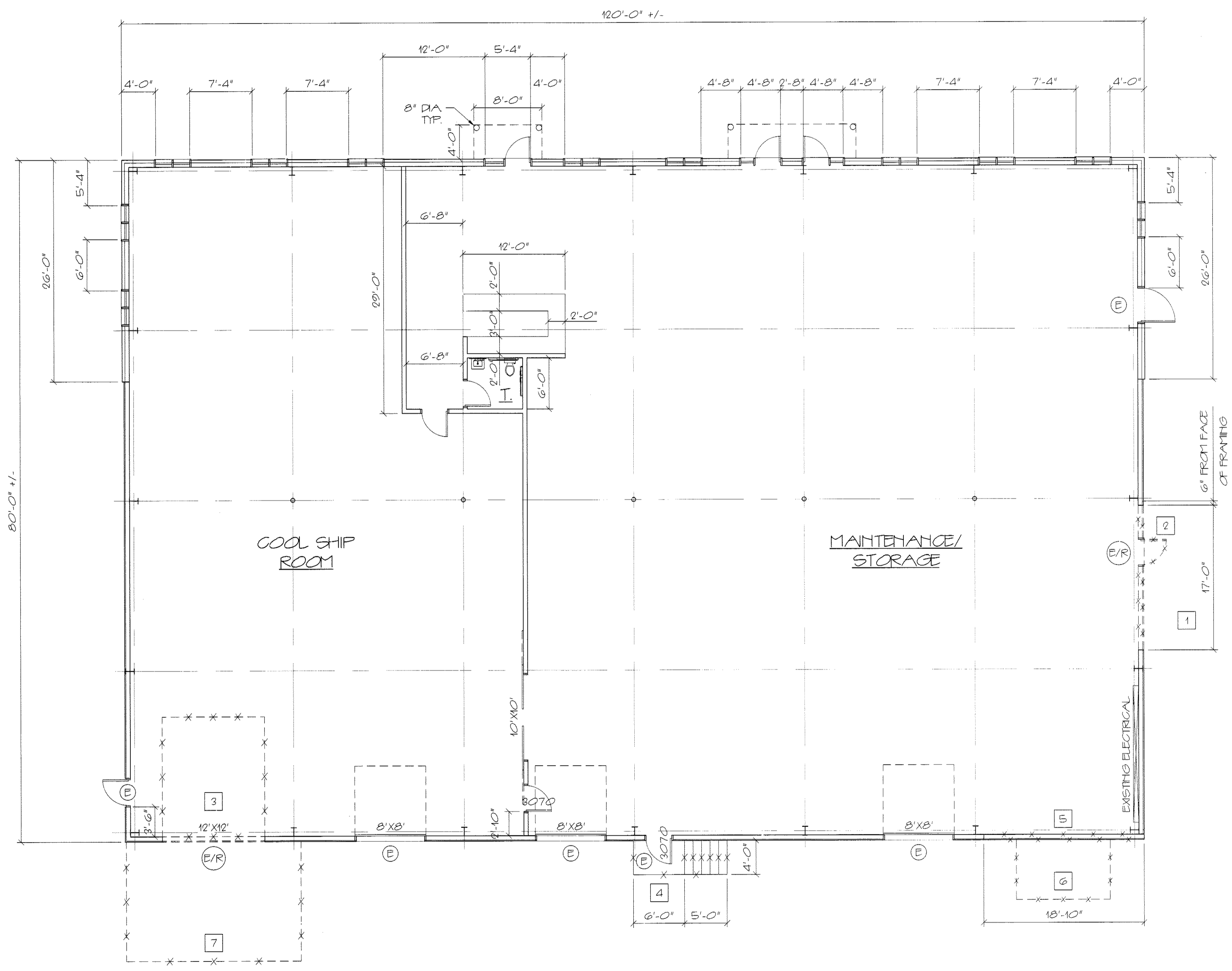
REVISIONS

NEW ADDITION FOR  
**ALLAGASH BREWING CO.**  
 50 INDUSTRIAL WAY PORTLAND, MAINE

**ARCHITECTURE**  
**INTERIOR DESIGN**  
 P.O. BOX 6179 FALMOUTH, MAINE 04105  
 (207) 871-3900

100 INDUSTRIAL WAY  
 EXISTING CONDITIONS  
 DEMOLITION PLAN  
 & NOTES

SCALE	1/8" = 1'-0"
DATE	7/2/2014
DRAWN BY	SAM/MFH
JOB NO.	140560
DRAWING NO.	<b>AD-1</b>



100 INDUSTRIAL WAY  
 EXISTING CONDITIONS DEMOLITION PLAN  
 1/8" = 1'-0"

**DEMOLITION NOTES**

1. REMOVE EXISTING EXTERIOR WALL & DOOR FOR RELOCATED EXISTING 12' X 12' OVERHEAD DOOR. REFER TO STRUCTURAL DRAWINGS FOR FRAMING MODIFICATIONS. SALVAGE EXISTING REMOVED EXTERIOR METAL WALL PANELS FOR REUSE IN AREAS DESIGNATED FOR INFILL AT REMOVALS, REPAIR, AND PATCHING.
2. REMOVE & RELOCATE EXISTING DOOR, FRAME & HARDWARE. RELOCATE ASSOCIATED EXIT LIGHT, SWITCH, ETC TO NEW DOOR LOCATION.
3. RELOCATE EXISTING MANUAL 12' X 12' OVERHEAD SECTIONAL DOOR & TRACK. REMOVE ABANDONED OPERATOR & TORSION BALANCE SPRING ASSEMBLY. REMOVE METAL TRIM AT OPENING. INFILL EXISTING OPENING WITH FRAMING AS INDICATED ON THE STRUCTURAL DRAWINGS. INSTALL SALVAGED EXTERIOR METAL WALL PANELS AND FLASHING FOR A WEATHER-TIGHT ASSEMBLY.
4. REMOVE EXISTING CONCRETE STAIR. SEE SITE DRAWINGS FOR NEW WORK.
5. REMOVE EXISTING EXTERIOR WALL FOR NEW BUILDING ADDITION. SEE STRUCTURAL DRAWINGS FOR HEIGHT OF OPENING/FRAMING MODIFICATIONS AT EXISTING BUILDING. SALVAGE EXISTING EXTERIOR METAL WALL PANELS FOR INFILL AND REPAIR AREAS.
6. REMOVE EXISTING DIKE SHED IN ITS ENTIRETY. EXISTING DIKE RACK TO BE RELOCATED BY OWNER.
7. REMOVE EXISTING BITUMINOUS RAMP. SEE SITE DRAWINGS.