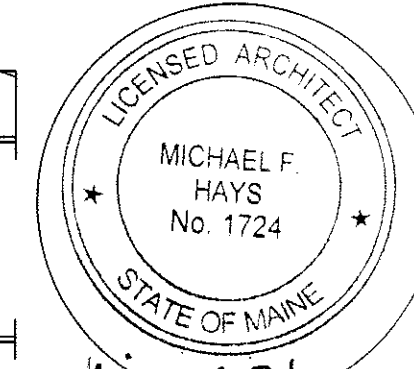


REPRODUCTION OR MISUSE OF THIS DOCUMENT WITHOUT WRITTEN PERMISSION IS PROHIBITED



Michael F. Hays

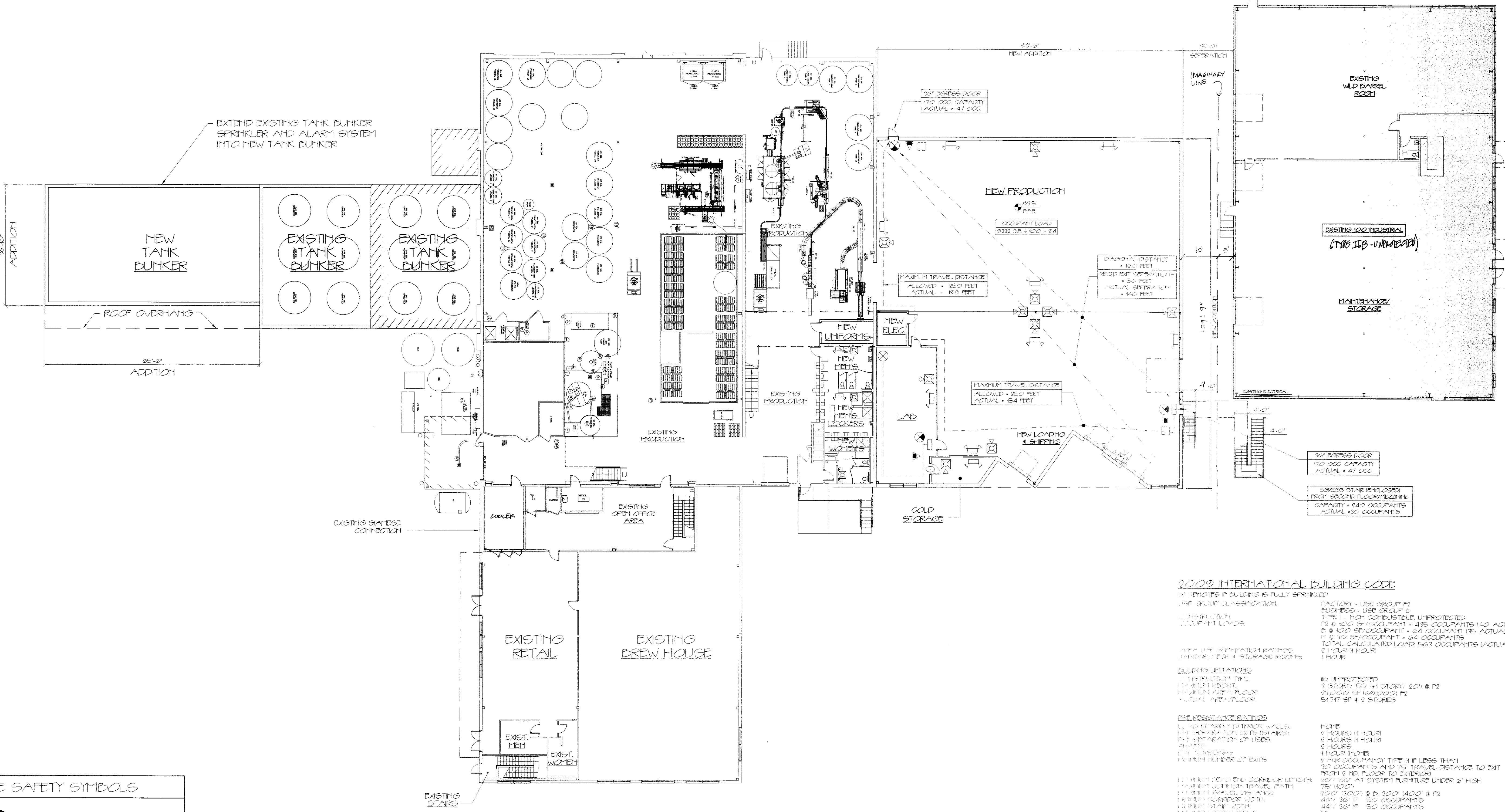
REVISIONS

NEW ADDITION FOR  
ALLAGASH BREWING CO.  
50 INDUSTRIAL WAY PORTLAND, MAINE

ARCHITECTURE  
INTERIOR DESIGN  
P.O. BOX 6179 FALMOUTH, MAINE 04105

FIRST FLOOR  
FACILITY CODE  
COMPLIANCE PLAN

SCALE 1/16" = 1'-0"  
DATE 8/5/2014  
DRAWN BY SAN/MPH  
JOB NO. 140560  
DRAWING NO. AC-1



FIRST FLOOR FACILITY CODE COMPLIANCE PLAN  
SCALE: 1/16" = 1'-0"

**LIFE SAFETY SYMBOLS**

	EXIT LIGHT
	FIRE EXTINGUISHER
	FIRE ALARM PULL MANUAL PULL STATION
	FIRE ALARM PANEL
	EMERGENCY LIGHT
	FIRE ALARM HORN/STROBE UNIT
	FIRE ALARM STROBE UNIT
	SMOKE DETECTOR
	ANNUNCIATOR PANEL
	"HOT AN EXIT" SIGN
	KNOX BOX
	1 HR RATED PARTITION
	2 HR RATED PARTITION

- LIFE SAFETY NOTES:**
1. THE NEW BUILDING ADDITION SHALL HAVE AN NFPA 13 FIRE SUPPRESSION SPRINKLER SYSTEM INSTALLED. SPRINKLER SYSTEM SHALL BE INSTALLED BY A CERTIFIED SPRINKLER CONTRACTOR AND SHALL BE REVIEWED AND APPROVED BY THE STATE OF MAINE FIRE MARSHAL AS WELL AS THE LOCAL AUTHORITY HAVING JURADCTION. THE CONTRACTOR SHALL BEAR SOLE RESPONSIBILITY FOR THE DESIGN AND INSTALLATION OF THE SYSTEM FOR OCCUPANT.
  2. THE SPRINKLER CONTRACTOR SHALL VERIFY THE EXISTING BUILDING SPRINKLER/FIRE ALARM SYSTEM HAS SUFFICIENT CAPACITY FOR EXTENDING INTO THE NEW BUILDING ADDITION.
  3. THE CLOSEST FIRE HYDRANT TO THE BUILDING HAS A STATIC PRESSURE OF 80 PSI AND A FLOW OF 2,343 GPM.
  4. EXTEND THE EXISTING FIRE ALARM SYSTEM INTO THE NEW ADDITION AS REQUIRED FOR COMPLIANCE WITH NFPA 101 LIFE SAFETY CODE. COORDINATE WITH SPRINKLER SYSTEM MODIFICATION. VERIFY LOCATION OF ALARM AND NOTIFICATION PANELS WITH THE AUTHORITY HAVING JURISDICTION.
  5. SEE SHEET A-12 - ACCESSIBILITY DETAILS FOR MOUNTING HEIGHTS OF LIFE SAFETY DEVICES.

**2009 INTERNATIONAL BUILDING CODE**  
 (1) VEHICLES IF BUILDING IS FULLY SPRINKLERED  
 (2) GROUP CLASSIFICATION  
 (3) OCCUPANT LOADS  
 (4) AREA USE SEPARATION RATINGS  
 (5) BUILDING LIMITATIONS  
 (6) FIRE RESISTANT RATINGS  
 (7) EGRESS REQUIREMENTS  
 (8) EGRESS PATHS  
 (9) EGRESS WIDTHS  
 (10) EGRESS DOORS  
 (11) EGRESS LIGHTING  
 (12) EGRESS SIGNAGE  
 (13) EGRESS STAIRS  
 (14) EGRESS RAMP  
 (15) EGRESS PLATFORMS  
 (16) EGRESS HANDRAILS  
 (17) EGRESS GUARDS  
 (18) EGRESS OPENINGS  
 (19) EGRESS CLEARANCES  
 (20) EGRESS OBSTRUCTIONS  
 (21) EGRESS SIGNAGE  
 (22) EGRESS LIGHTING  
 (23) EGRESS STAIRS  
 (24) EGRESS RAMP  
 (25) EGRESS PLATFORMS  
 (26) EGRESS HANDRAILS  
 (27) EGRESS GUARDS  
 (28) EGRESS OPENINGS  
 (29) EGRESS CLEARANCES  
 (30) EGRESS OBSTRUCTIONS

**Maine State Plumbing Code/UPC**

Occupancy Classification: Factory & Auxiliary Business/Mercantile  
 Occupancy Area: \$1,177 sf  
 Occupancy Load: 563 (139 Actual per IBC exemption)

**Factory:** 75 Occupants - 38 male/37 female  
 Actual - 57 Males / 18 Females

FIXTURES	TOILETS	URINALS	LAVS	SHOWERS
Men	3	3	6	2
Women	2	0	2	1
Unisex	1	0	1	0

Drinking Fountain: 1 Bottle/Cup Water Fill Station (Employee Break Room)

**Mercantile:** 64 Occupants (32 male/32 female)

FIXTURES	TOILETS	URINALS	LAVS	SHOWERS
Men	2	1	1	NR
Women	2	0	1	NR

Drinking Fountain: 1 Bottle/Cup Water Fill Station (Tasting Room)