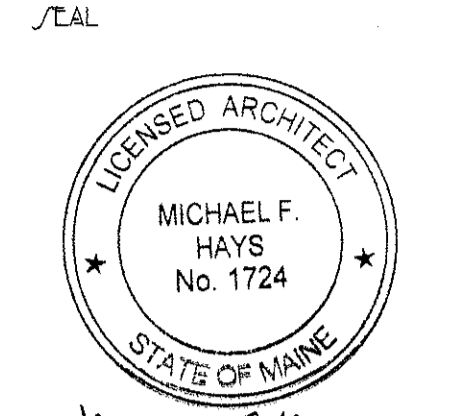




GRANT HAYS  
ASSOCIATES

ARCHITECTURE & INTERIOR DESIGN  
P.O. BOX 6179 FALMOUTH MAINE 04105  
207.871.5900 www.granthays.com



Michael F. Hays  
REVISION/

DRAWING NAME

NEW ADDITION FOR  
ALLAGASH BREWING CO.  
50 INDUSTRIAL WAY PORTLAND, MAINE

SHEET

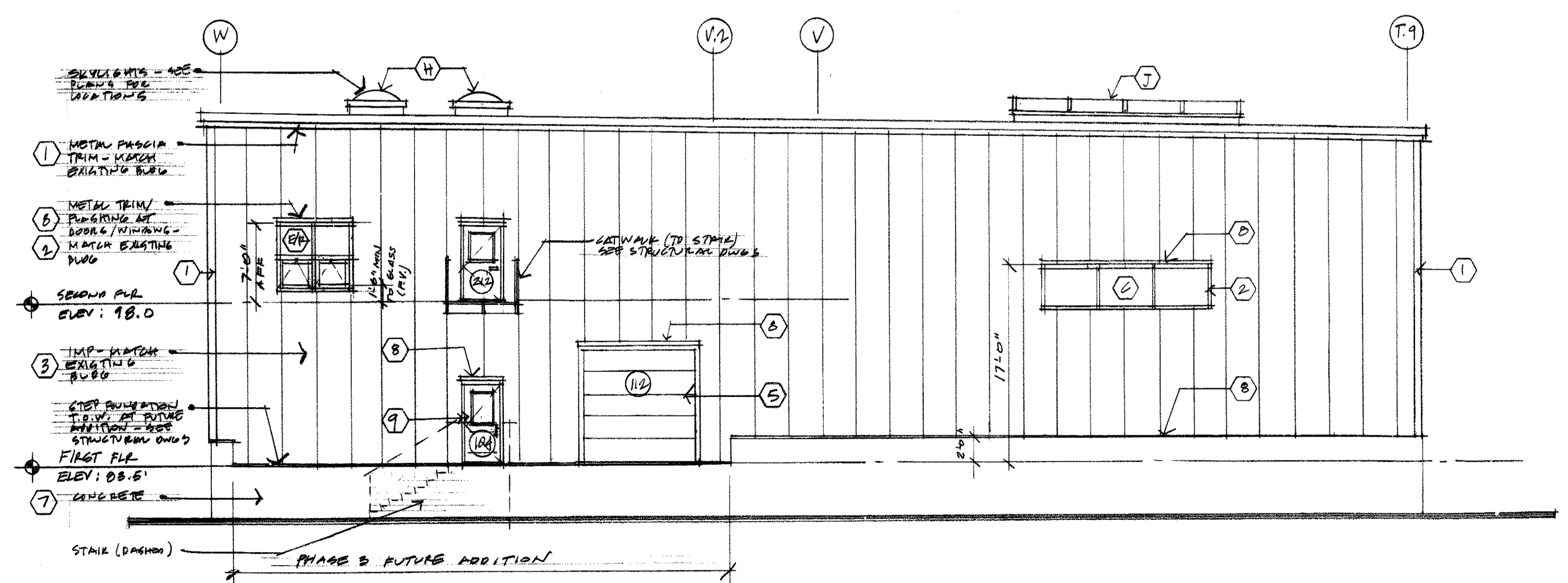
EXTERIOR ELEVATIONS

DATE: 25 JULY 2014  
SCALE: 1/8" = 1'-0"  
DRAWN: MPH  
JOB NO: 140960  
SHEET: A6

COPYRIGHT  
REPRODUCTION OR REV. OF THIS  
DOCUMENT WITHOUT WRITTEN  
PERMISSION FROM GRANT HAYS/  
ASSOCIATES IS PROHIBITED.

COLOR SCHEDULE	
TAG	COLOR
①	LIGHT BRONZE
②	MILL ALUMINUM
③	LIGHT STONE
④	BLACK
⑤	WHITE
⑥	MILL ALUMINUM
⑦	CONCRETE
⑧	LIGHT BRONZE
⑨	BLUE
⑩	(RESERVED)

NOTE: MATCH EXISTING BUILDING INSULATED EXTERIOR METAL PANELS FROM 2012 ADDITION AT NEW BUILDING ADDITION  
MATCH TRIM PROFILES AND COLORS AS INDICATED  
AND AS REASONABLY AVAILABLE.



NEW ADDITION SIDE ELEVATION (EAST)  
1/8" = 1'-0"