

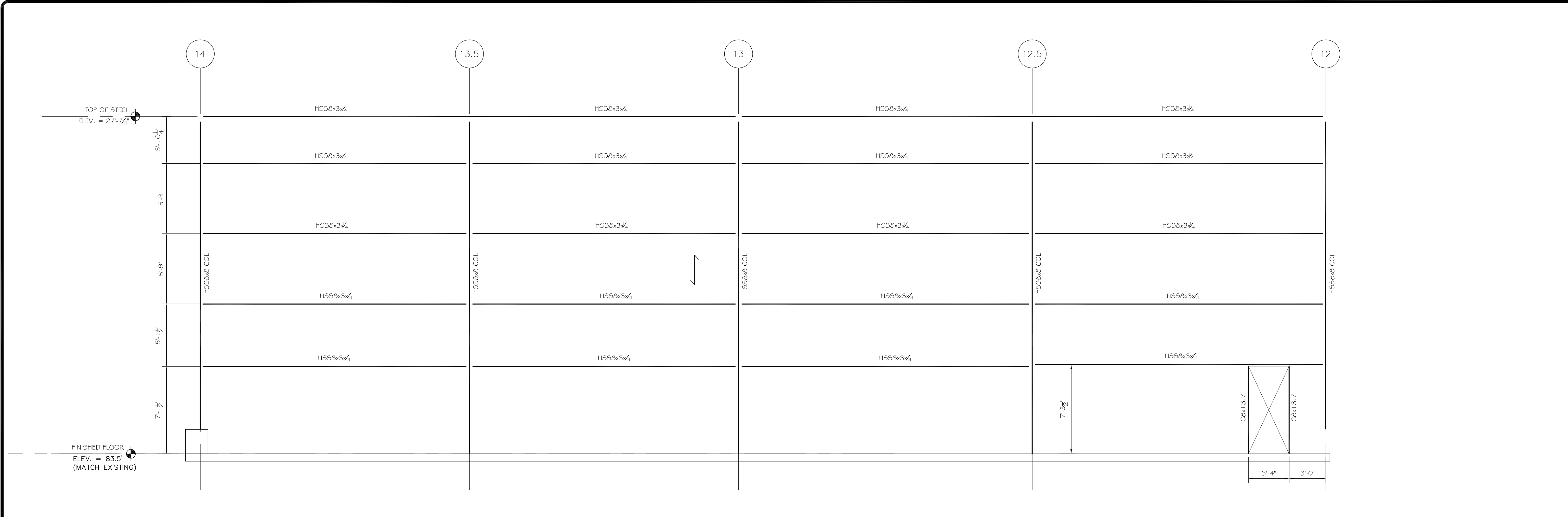
ASSOCIATED DESIGN PARTNERS INC.
 80 Leighton Road
 Falmouth, Maine 04105
 Office: (207) 878-1751
 Fax: (207) 878-1788
 E-Mail: adp@adpengineering.com

THIS DRAWING, DESIGN AND ELECTRONIC FILE ARE THE PROPERTY OF ASSOCIATED DESIGN PARTNERS, INC. THE REPRODUCTION, COPYING OR ANY OTHER USE OF THIS DOCUMENT WITHOUT WRITTEN CONSENT IS PROHIBITED.

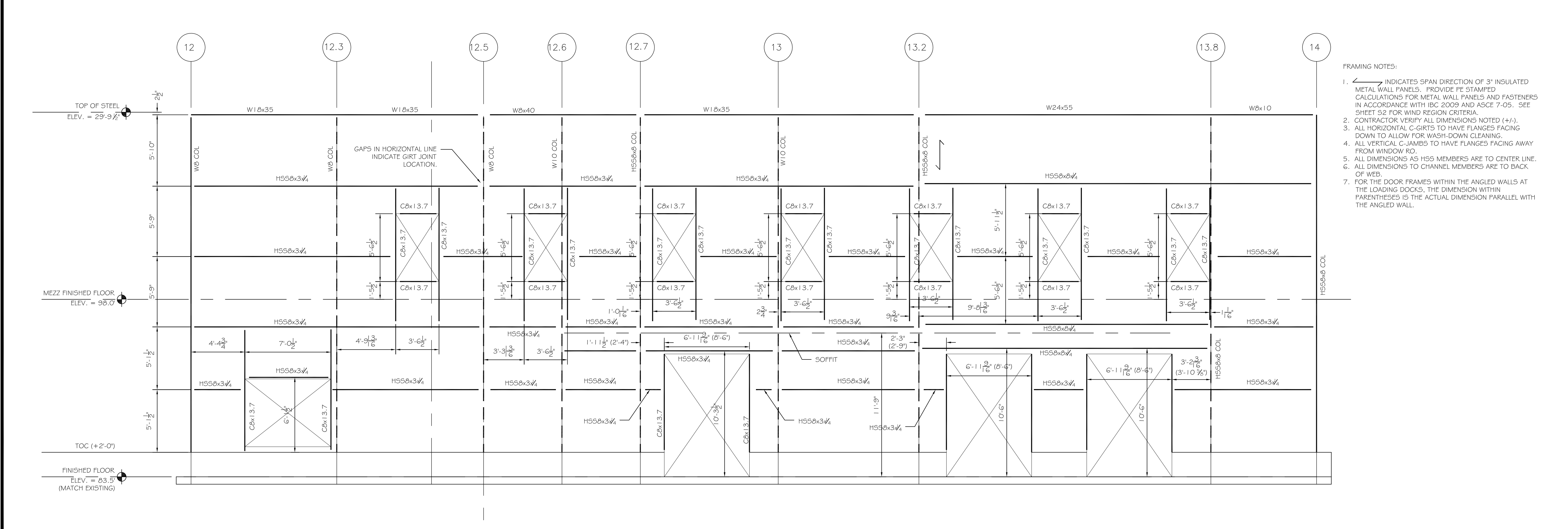
PROJECT: **ALLAGASH 2015 EXPANSION**
100 INDUSTRIAL WAY, PORTLAND ME
 FOR: ALLAGASH BREWING CO.
 SHEET TITLE: **FRAMING ELEVATIONS ISSUED FOR PERMITTING**

NO.	BY	DATE
1	ASW	
2	ASW	
3	ASW	
4	ASW	

DATE :	7/25/14
SCALE :	AS NOTED
DESIGN BY:	ASW
DRAWN BY:	RSC
FILE #:	
PROJECT NUMBER:	14064
SHEET NO.:	57



B4 EAST (REAR) ELEVATION WALL GIRTS
 SCALE: 1/4" = 1'-0"



- FRAMING NOTES:
- ← INDICATES SPAN DIRECTION OF 3" INSULATED METAL WALL PANELS. PROVIDE PE STAMPED CALCULATIONS FOR METAL WALL PANELS AND FASTENERS IN ACCORDANCE WITH IBC 2009 AND ASCE 7-05. SEE SHEET S2 FOR WIND REGION CRITERIA.
 - CONTRACTOR VERIFY ALL DIMENSIONS NOTED (+/-).
 - ALL HORIZONTAL C-GIRTS TO HAVE FLANGES FACING DOWN TO ALLOW FOR WASH-DOWN CLEANING.
 - ALL VERTICAL C-JAMBS TO HAVE FLANGES FACING AWAY FROM WINDOW RO.
 - ALL DIMENSIONS AS HSS MEMBERS ARE TO CENTER LINE.
 - ALL DIMENSIONS TO CHANNEL MEMBERS ARE TO BACK OF WEB.
 - FOR THE DOOR FRAMES WITHIN THE ANGLED WALLS AT THE LOADING DOCKS, THE DIMENSION WITHIN PARENTHESES IS THE ACTUAL DIMENSION PARALLEL WITH THE ANGLED WALL.

A4 WEST (FRONT) ELEVATION WALL GIRTS
 SCALE: 1/4" = 1'-0"