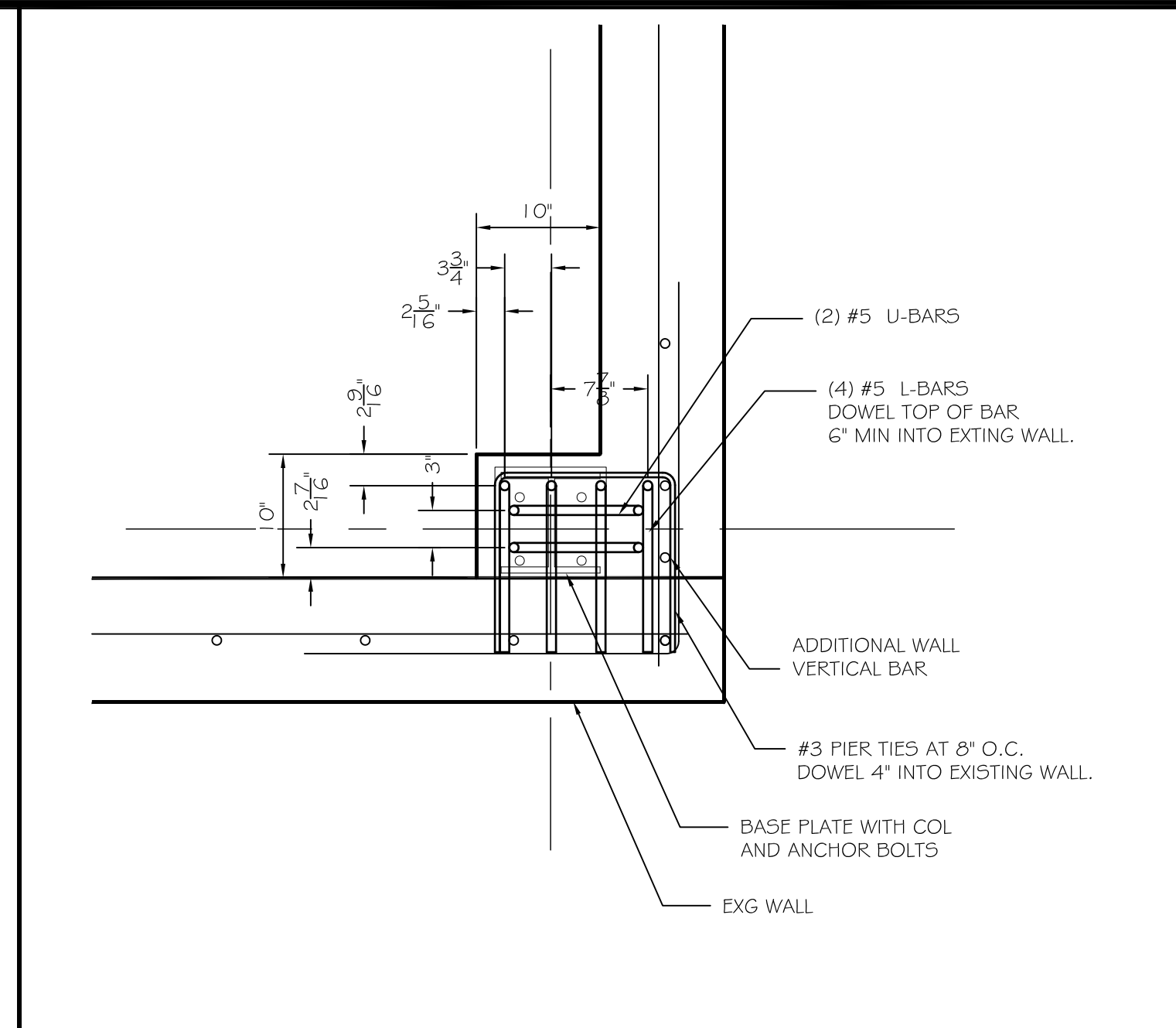
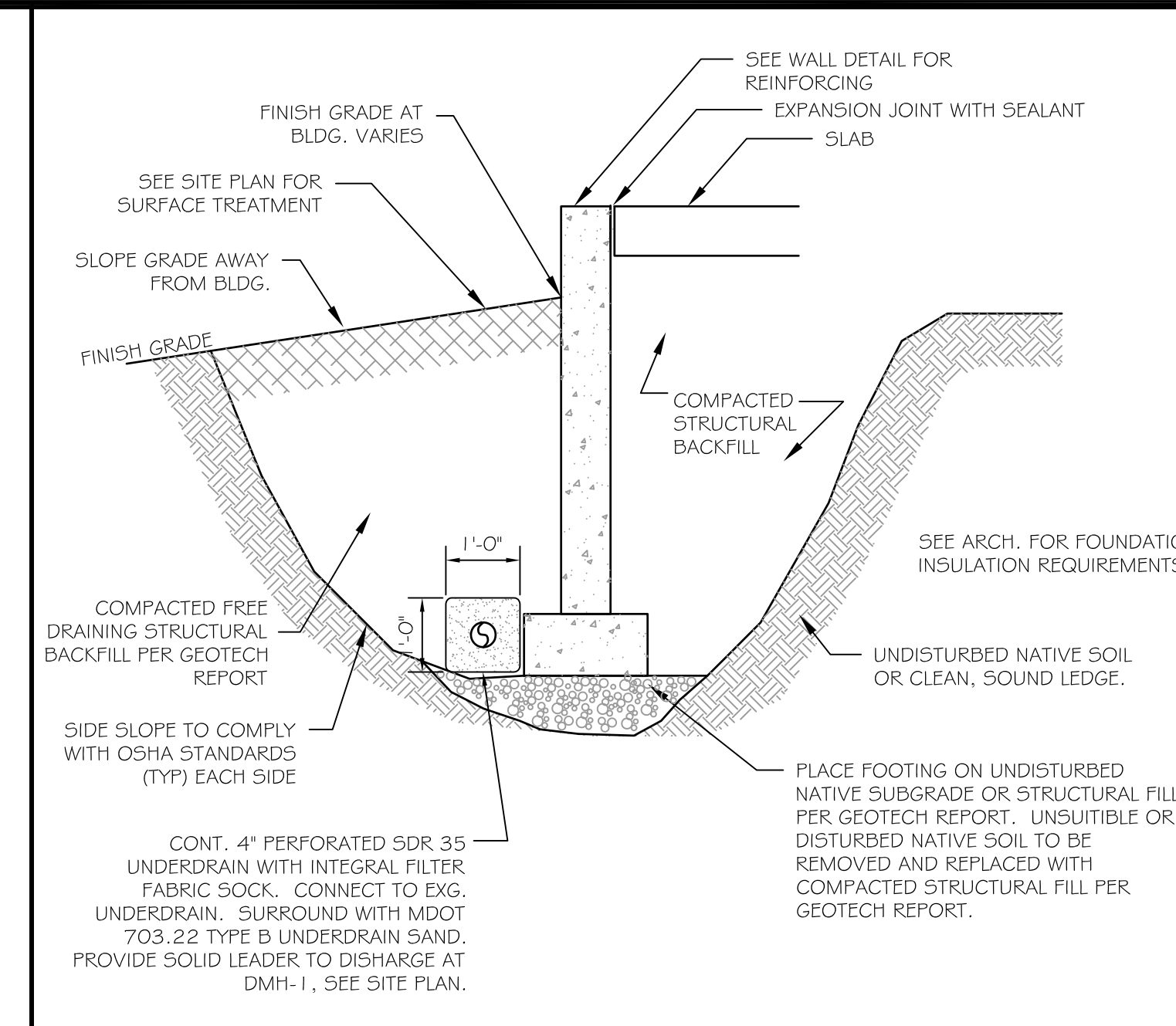


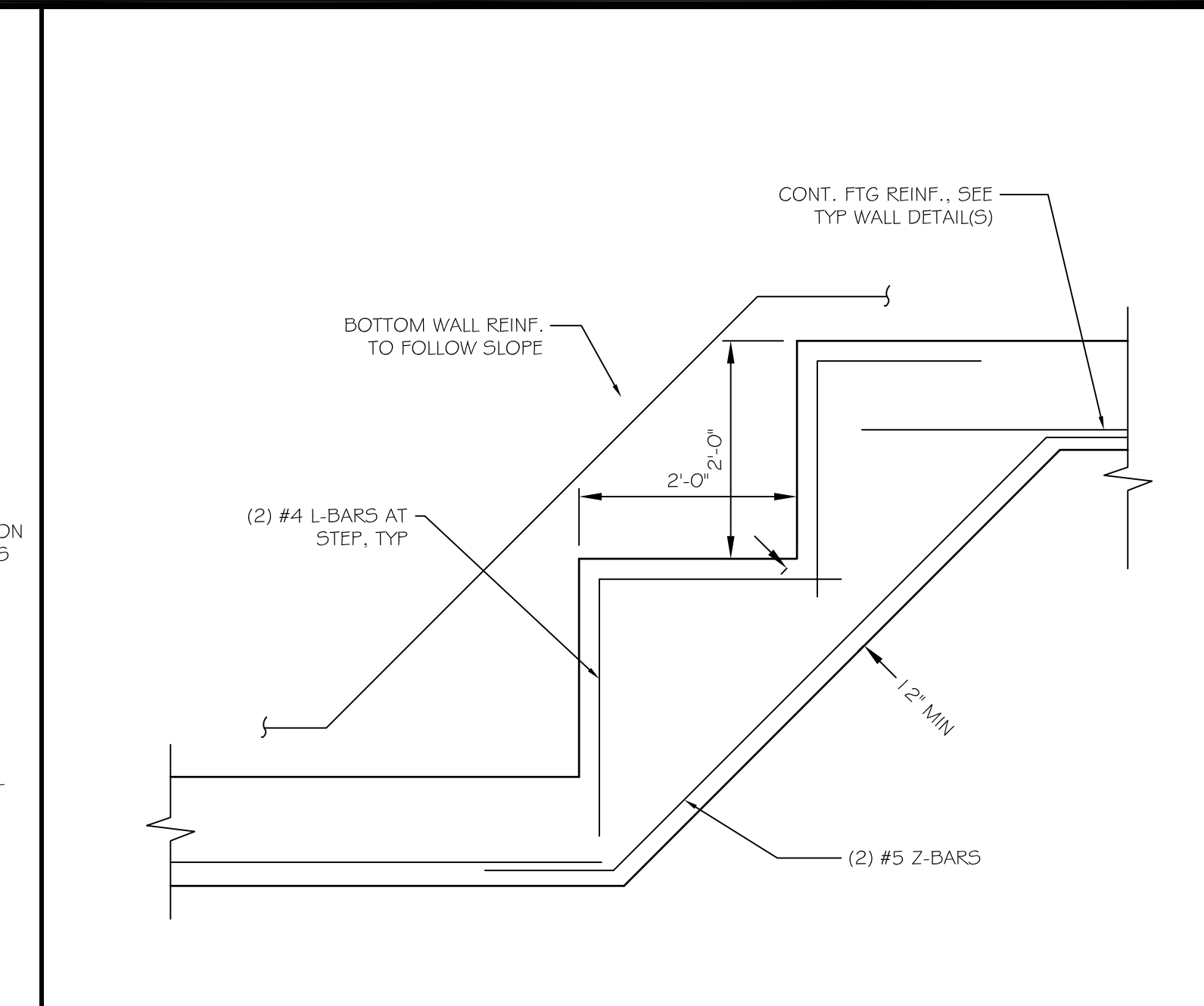
C4 TYPICAL SLAB DETAILS
SCALE: NO SCALE



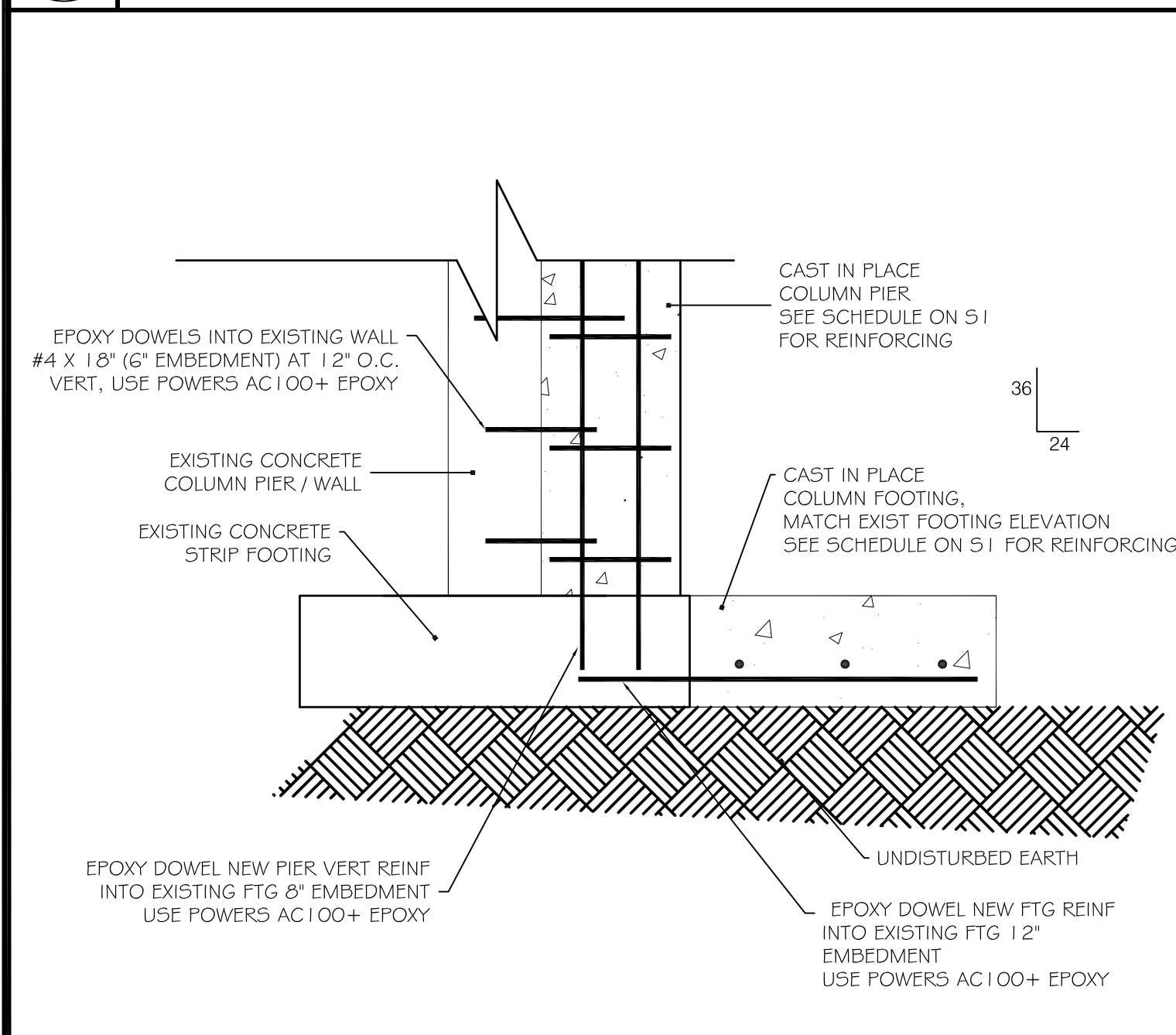
C3 PIER P3 AT CORNER
SCALE: 1/2" = 1'-0"



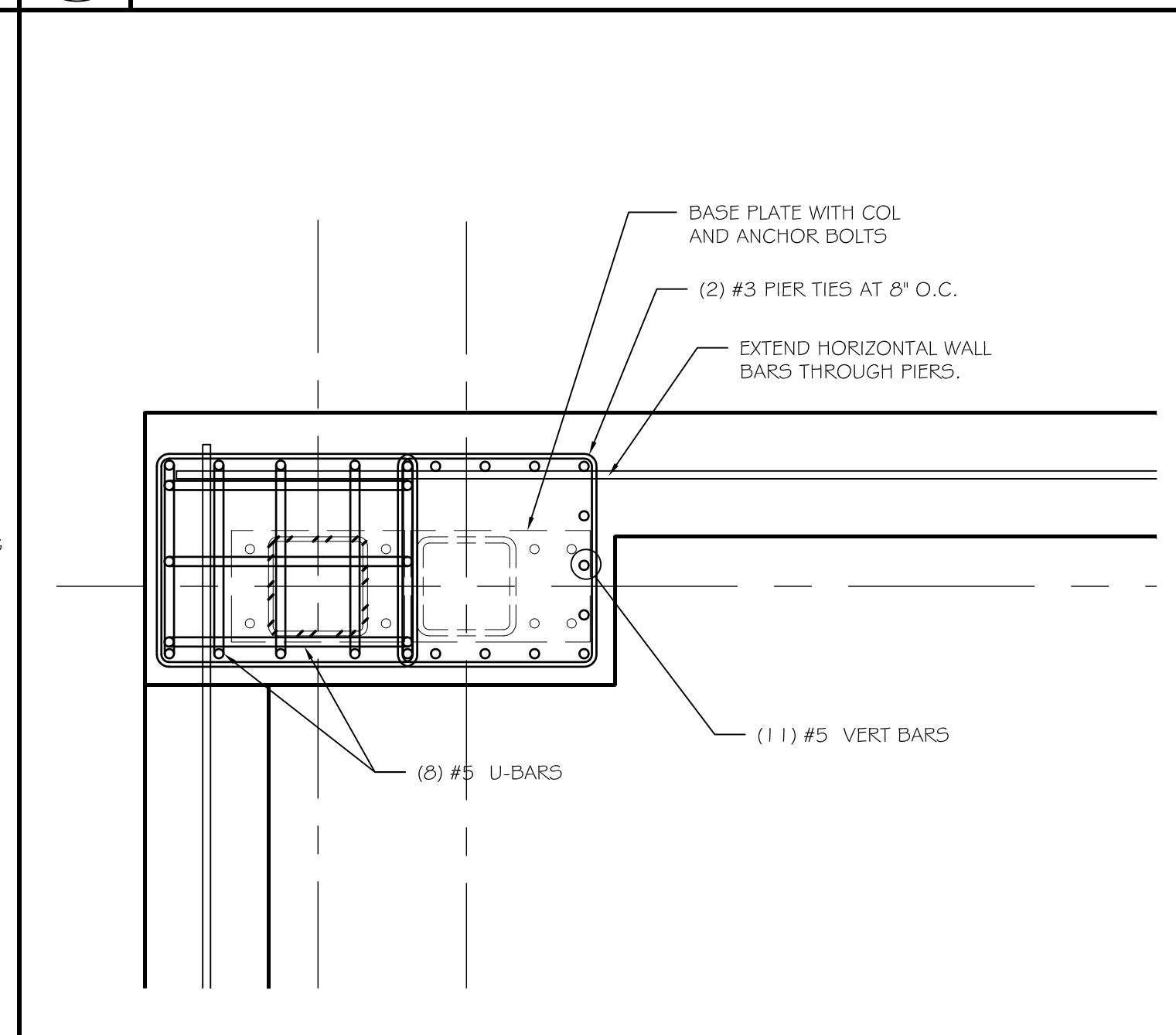
C2 TYPICAL EARTHWORK DETAIL
SCALE: NO SCALE



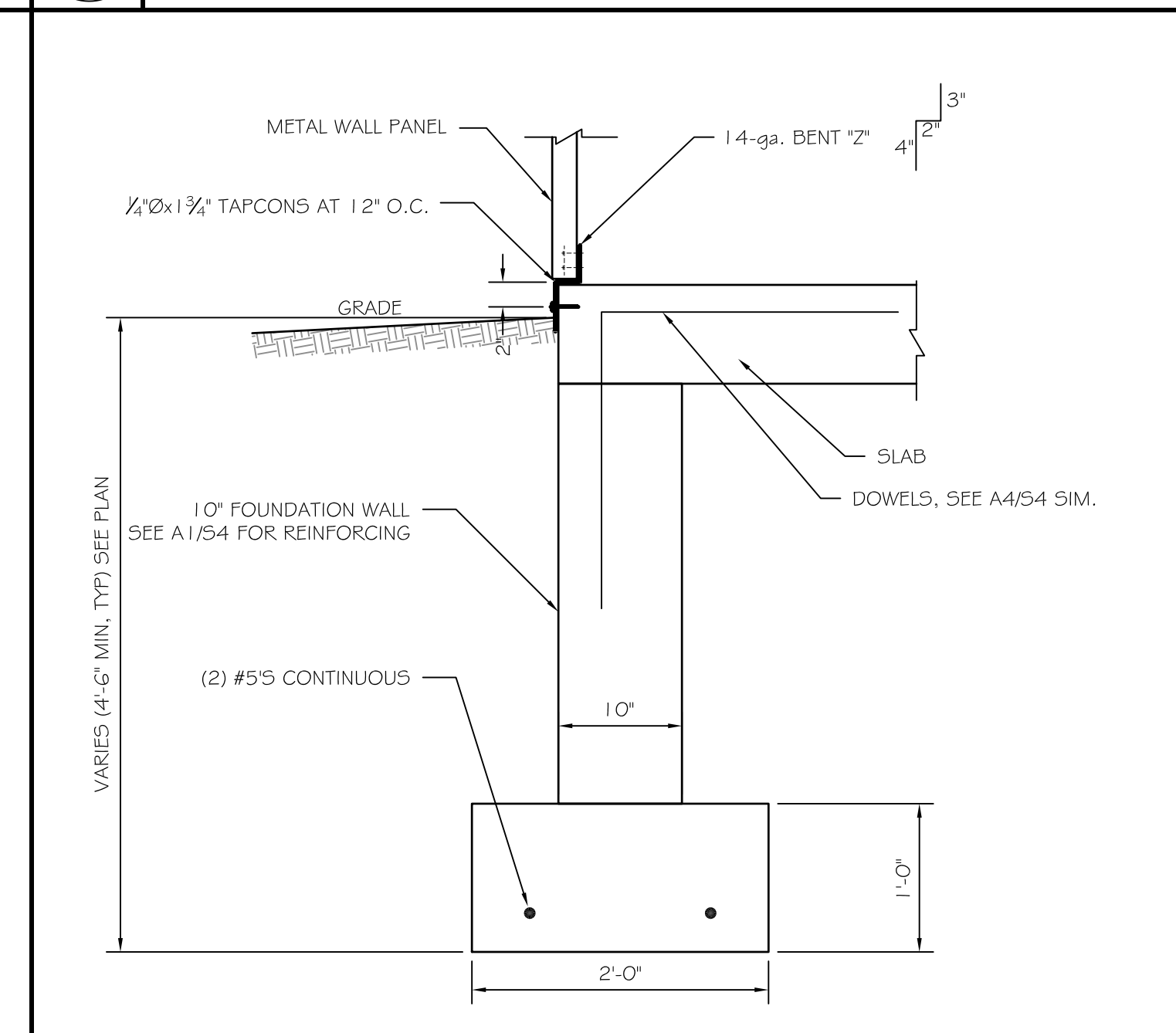
C1 FOOTING STEP DETAIL
SCALE: NO SCALE



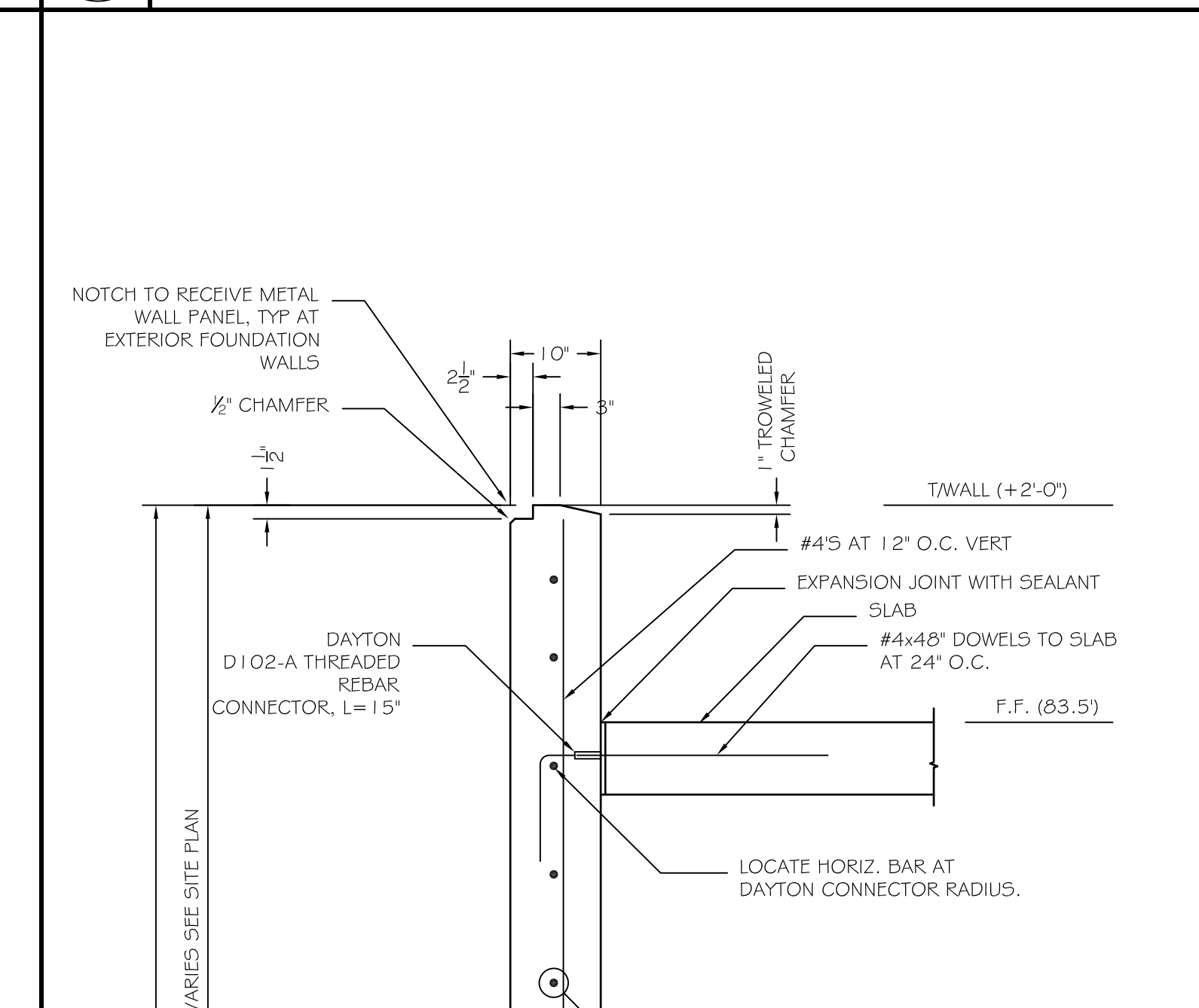
B4 COLUMN AND FOOTING AT EXG. WALL
SCALE: NO SCALE



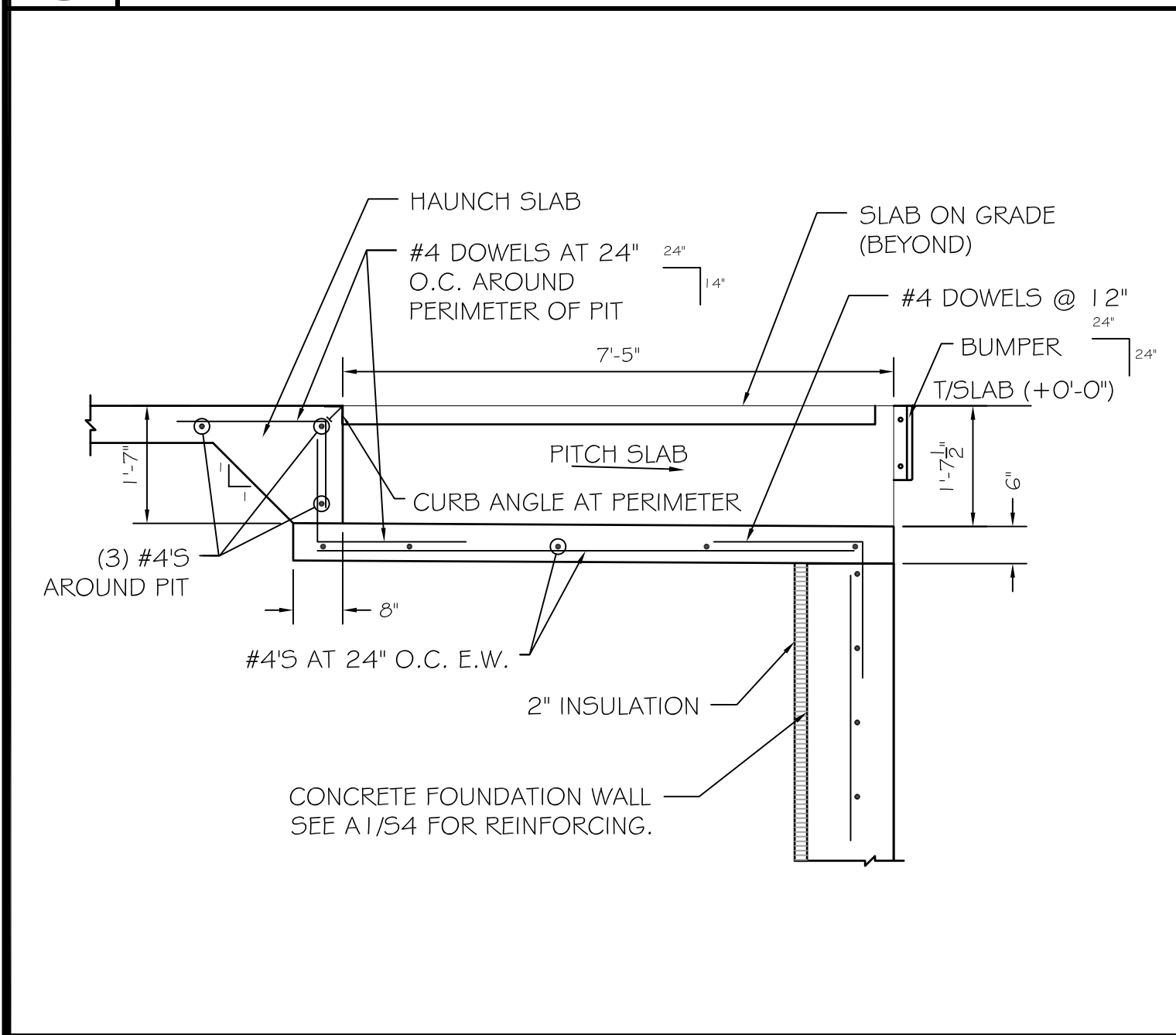
B3 PIER P4
SCALE: 1/2" = 1'-0"



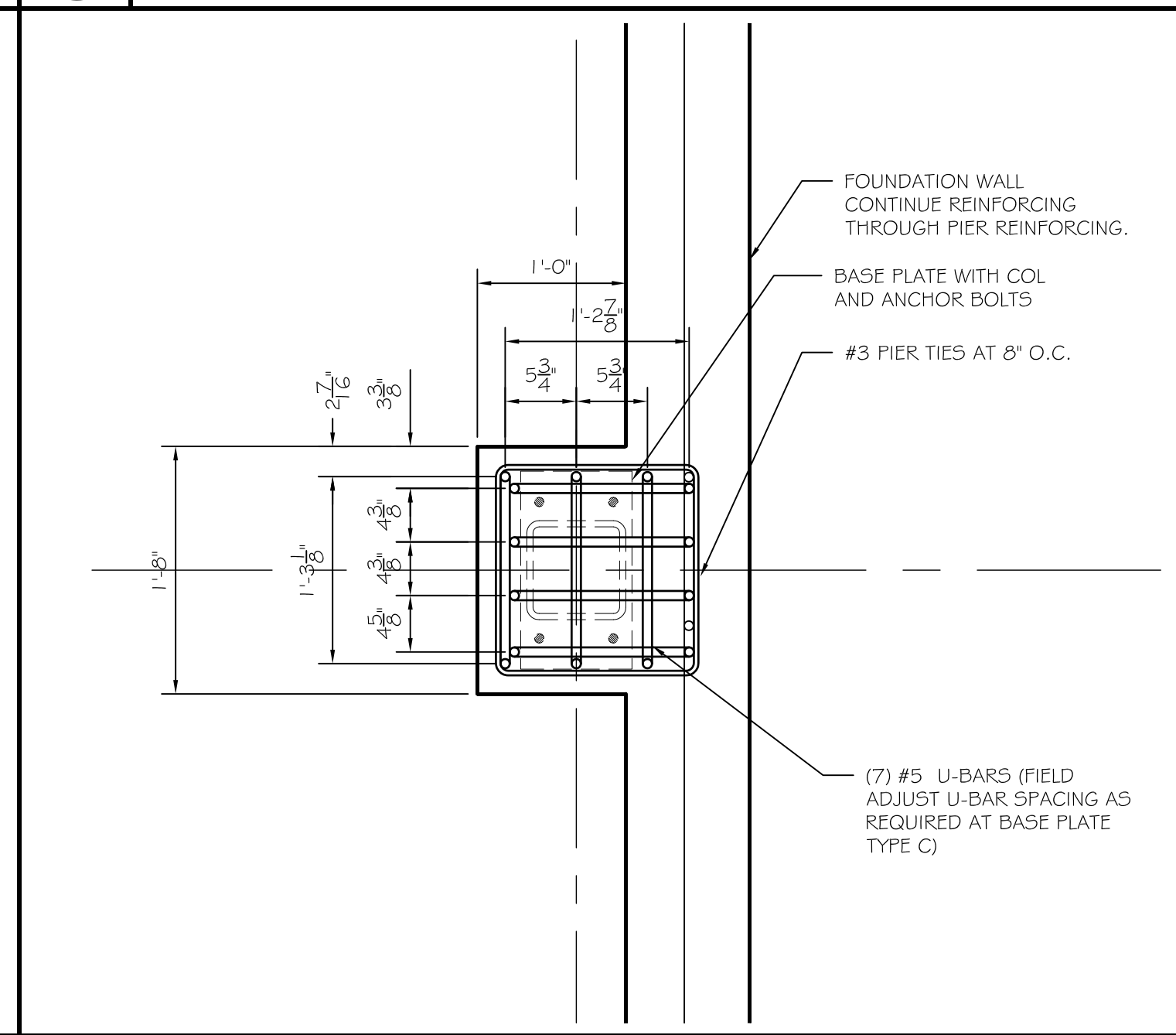
B2 FOUNDATION DETAIL
SCALE: 1" = 1'-0"



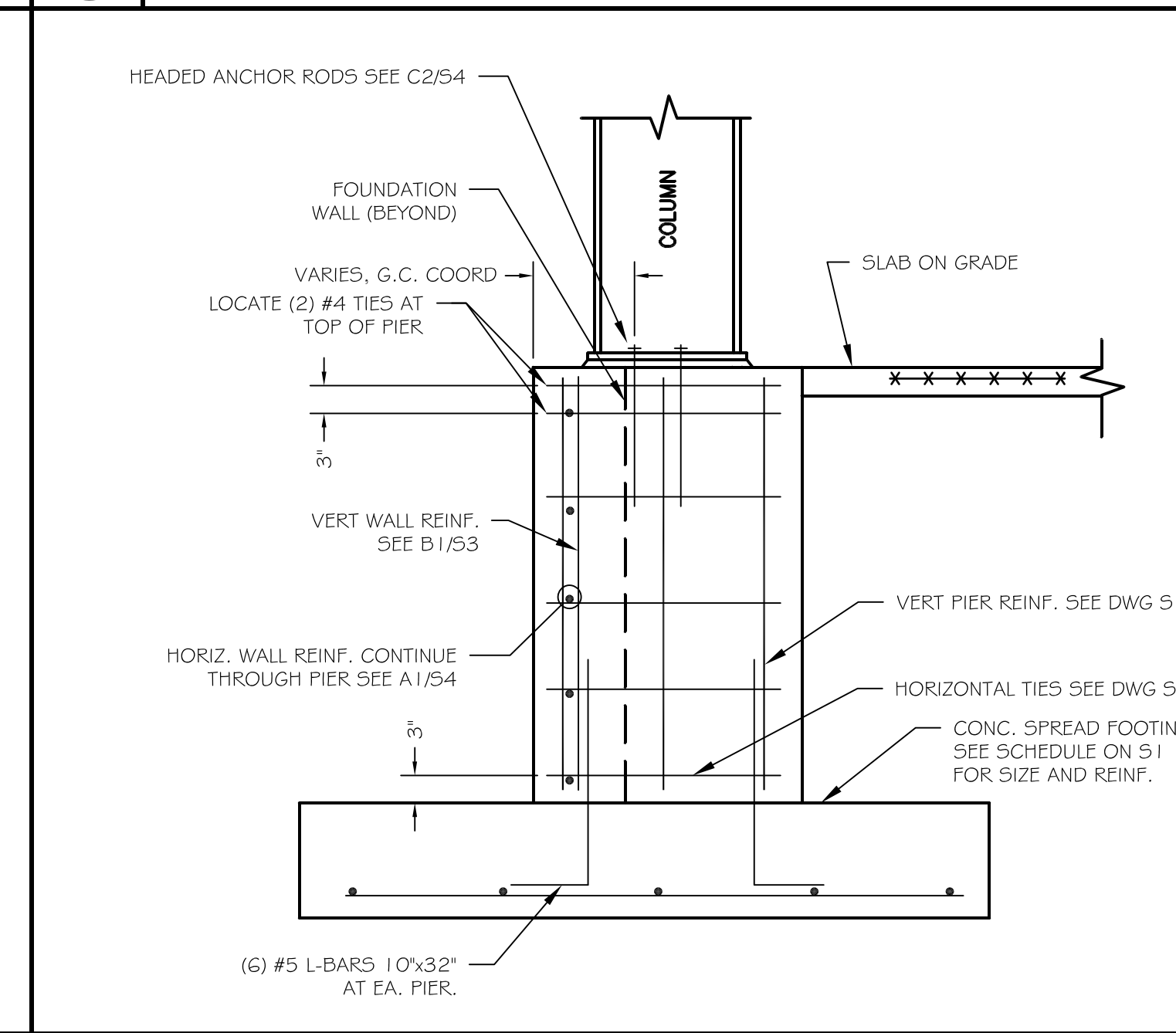
A1 1 0" FOUNDATION WALL AT TWALL + 2'-0"
SCALE: 3/4" = 1'-0"



A4 DOCK LEVELLER PIT
SCALE: NO SCALE



A3 TYP. PIER / FOOTING SECTION AT EXTERIOR WALL
SCALE: NO SCALE



A2 FOUNDATION DETAIL
SCALE: NO SCALE

ASSOCIATED DESIGN PARTNERS INC.
Office: (207) 878-1751
Fax: (207) 878-1788
E-Mail: adp@adpengineering.com
80 Leighton Road
Falmouth, Maine 04105

THIS DRAWING, DESIGN AND ELECTRONIC FILE ARE THE PROPERTY OF ASSOCIATED DESIGN PARTNERS, INC. THE REPRODUCTION, COPYING OR ANY OTHER USE OF THIS DOCUMENT WITHOUT WRITTEN CONSENT IS PROHIBITED.

PROJECT: **ALLGASH 2015 EXPANSION**
100 INDUSTRIAL WAY, PORTLAND ME
FOR: ALLGASH BREWING CO.
SHEET TITLE: **FOUNDATION DETAILS ISSUED FOR PERMITTING**

NO.	BY	DATE	DESCRIPTION

DATE: 7/25/14
SCALE: AS NOTED
DESIGN BY: ASW
DRAWN BY: RSC
FILE #:
PROJECT NUMBER:
14064
SHEET NO:
S4