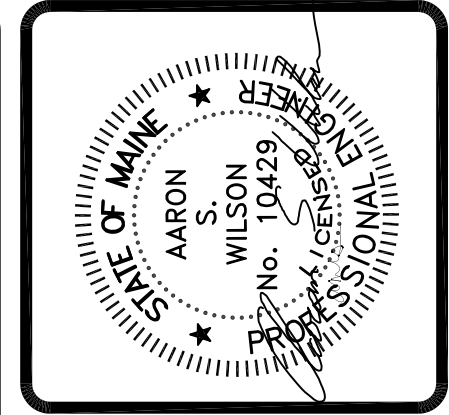
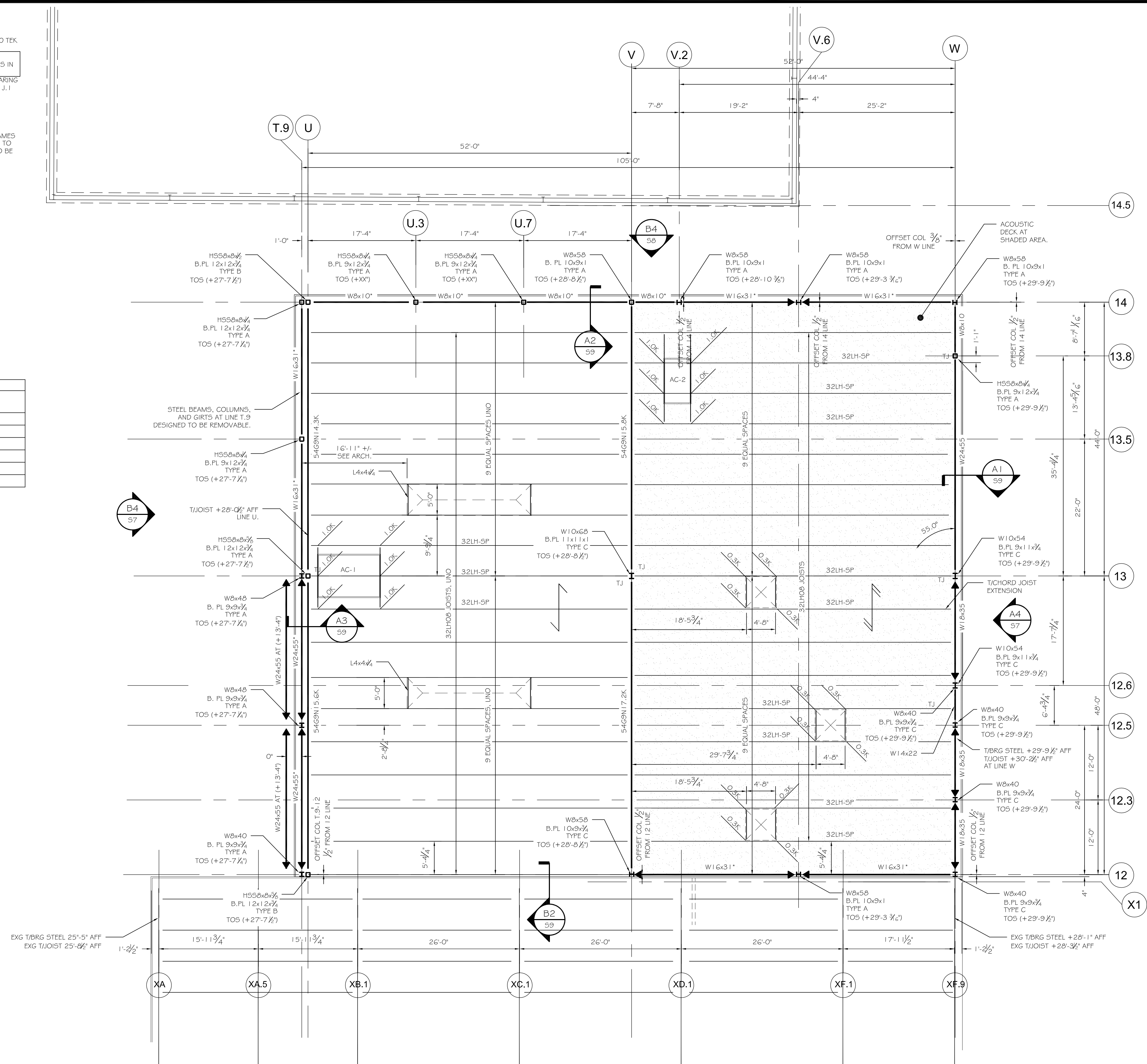


FRAMING NOTES:

- SEE S2 FOR GENERAL DESIGN NOTES.
- INDICATES SPAN DIRECTION OF 1/2"-22GA TYPE B PAINTED ROOF DECK. 3/8" PUDDLE WELDS IN 3/4" PATTERN, (4) #10 TEK SIDELAP SCREW PER SPAN.
- ADD ALTERNATE S-2:
INDICATES SPAN DIRECTION OF 1/2"-22GA TYPE BA ACOUSTICAL (NRC 0.6) PAINTED ROOF DECK. 3/8" PUDDLE WELDS IN 3/4" PATTERN, (5) #10 TEK SIDELAP SCREW PER SPAN.
- TOS (+XX") INDICATES TOP OF BEARING STEEL REFERENCED FROM FIN. FIRST FLOOR ELEVATION 0'-0" = (83.5). TOP OF BEARING STEEL DESIGNATED AT COLUMN CENTERLINE TYPICAL, UNLESS NOTED OTHERWISE (UNO). CONTRACTOR VERIFY TOS AT LINES J, I AND M TO MATCH EXISTING ROOF HEIGHT AND SLOPE.
- INDICATES BEAM INSTALLED AT OPEN WEB JOIST HEIGHT.
- (*) INDICATES BEAM TO BE EXTERIOR EDGE OF PERIMETER BEAM FLANGE, TYP UNO.
- EDGE OF DECK TO BE EXTERIOR EDGE OF PERIMETER BEAM FLANGE, TYP UNO.
- INDICATES BEAM TO COLUMN MOMENT CONNECTION, SEE DET. B4/S4.
- ALL ANGLES AT HVAC / ROOF PENETRATIONS TO BE L4x4x1/4". CONTRACTOR VERIFY CLEARANCES FOR SHOP FABRICATED FRAMES WITH ACTUAL HVAC UNITEQUIPMENT PURCHASED PRIOR TO FABRICATION. ALL ANGLES AT ROOF PENETRATIONS/HVAC UNITS TO BE SHIPPED LOOSE AND FIELD INSTALLED AFTER HVAC FRAMES ARE ONSITE. ALL ANGLES AT HVAC FRAMES / PIPE STACKS TO BE ORIENTED WITH HORIZONTAL LEGS FACING AWAY FROM ADJACENT DUCT OPENINGS.
- "UNO" INDICATES "UNLESS NOTED OTHERWISE"
- ALL WOOD IN CONTACT WITH CONCRETE TO BE PRESURE TREATED.
- ALL FASTENERS IN FT LUMBER TO BE HOT DIPPED G90 GALVANIZED.
- CONTRACTOR VERIFY ALL DIMENSIONS NOTED (+/-).
- SEE S4 FOR BRACE FRAME ELEVATIONS
- ALL STRUCTURAL STEEL TO BE PRIMED (GREY) AND PREPPED FOR PAINT. SEE SPECS FOR PAINTING REQUIREMENTS.

W-BEAM CONNECTION SCHEDULE			
W-BEAM	3/4" A325N BOLTS	LENGTH OF 3/8" PL	ALLOWABLE REACTION w/ 1/4" FILLET WELD
W24	n=7	L=21	P=56.4k
W21	n=6	L=18	P=46.3k
W18	n=5	L=15	P=36.3k
W16	n=4	L=12	P=26.1k
W14, W12	n=3	L=9	P=16.3k
W10, W8	n=2	L=6	P=8.2k

SINGLE PL SHEAR CONN. IN ACCORDANCE w/ AISC 9th Ed. TABLE X



ASSOCIATED DESIGN PARTNERS INC.
 Office: (207) 878-1751
 (207) 878-1788
 E-Mail: cdp@adpengineering.com
 80 Leighton Road
 Falmouth, Maine 04105

THIS DRAWING, DESIGN AND ELECTRONIC FILE ARE THE PROPERTY OF ASSOCIATED DESIGN PARTNERS, INC. THE REPRODUCTION, COPYING OR ANY OTHER USE OF THIS DOCUMENT WITHOUT WRITTEN CONSENT IS PROHIBITED.

PROJECT: **ALLAGASH 2015 EXPANSION**
50 INDUSTRIAL WAY, PORTLAND, MAINE
 FOR: ALLAGASH BREWING CO.
 SHEET TITLE: **ROOF FRAMING PLAN**
ISSUED FOR PERMITTING

REVISIONS	DATE	DESCRIPTION

DATE : 7/25/14
 SCALE : 1/8"=1'-0"
 DESIGN BY: ASW
 DRAWN BY: RSC
 PROJECT NUMBER:
14064
 SHEET NO:
S2