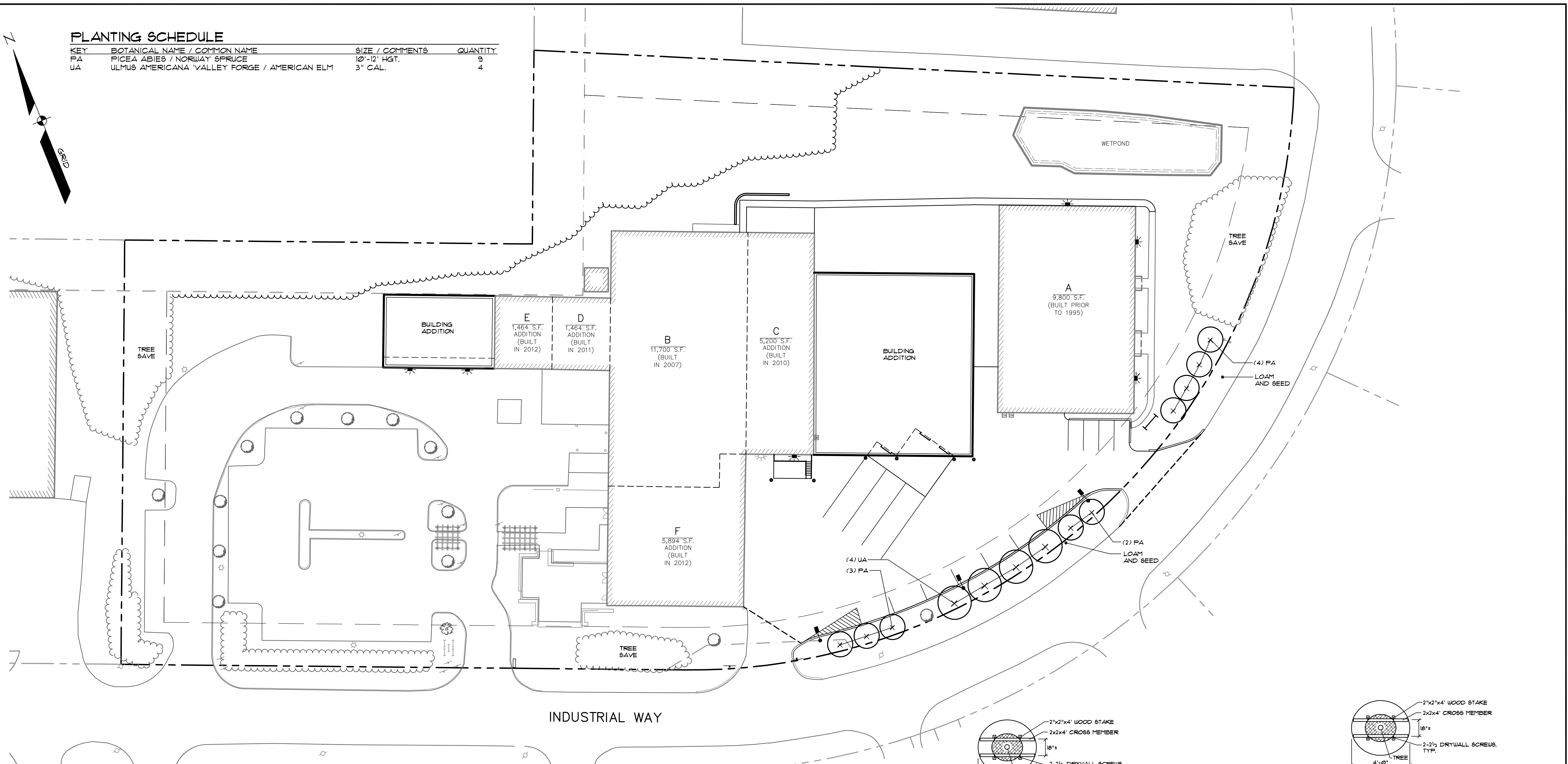
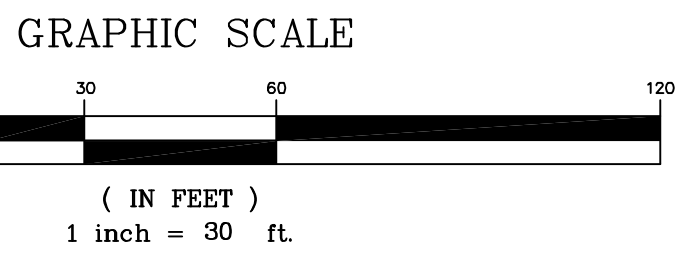


**PLANTING SCHEDULE**

KEY	BOTANICAL NAME / COMMON NAME	SIZE / COMMENTS	QUANTITY
PA	PICEA ABIES / NORWAY SPRUCE	10'-12' HGT.	9
UA	ULMUS AMERICANA 'VALLEY FORGE' / AMERICAN ELM	3" CAL.	4



INDUSTRIAL WAY



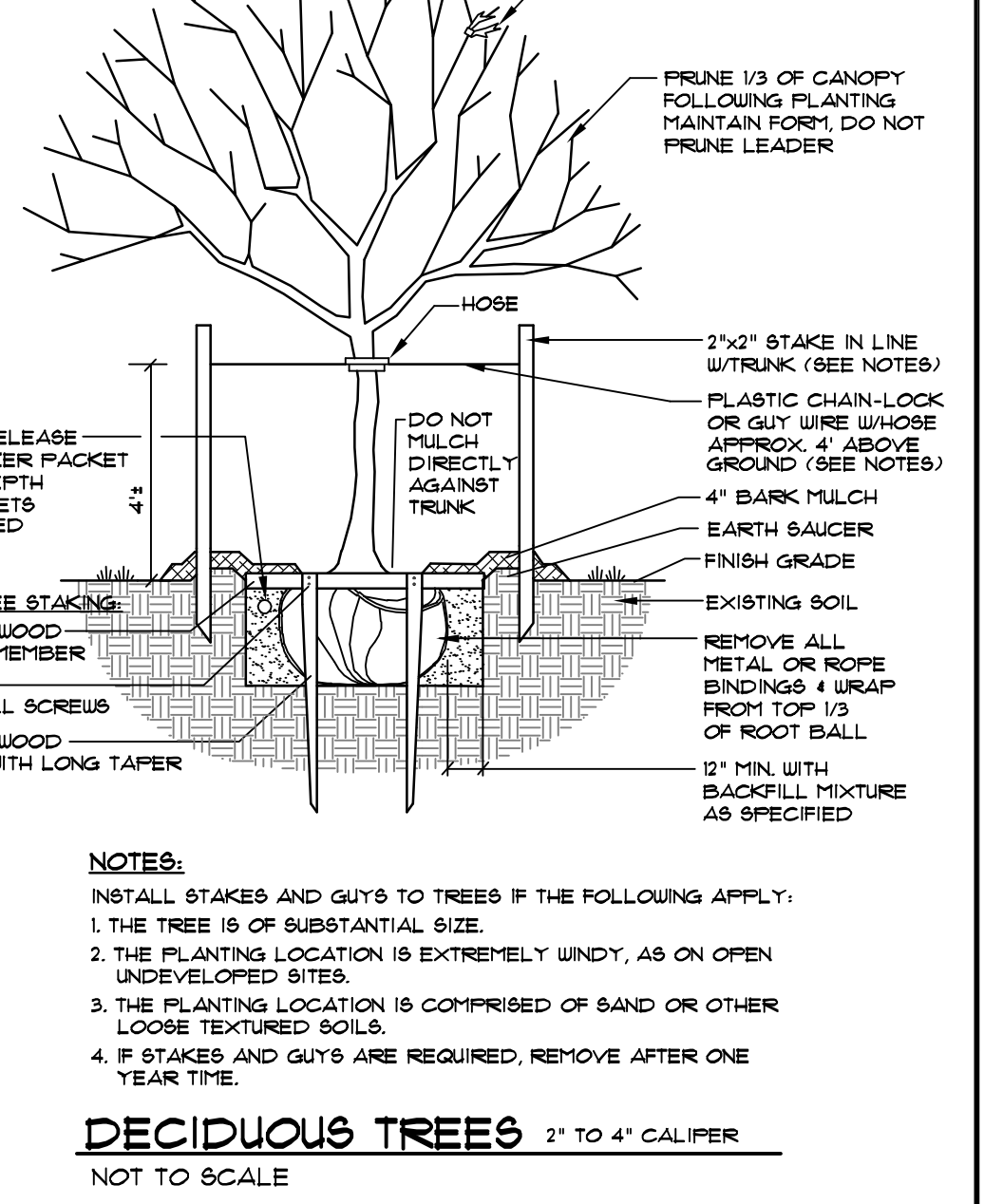
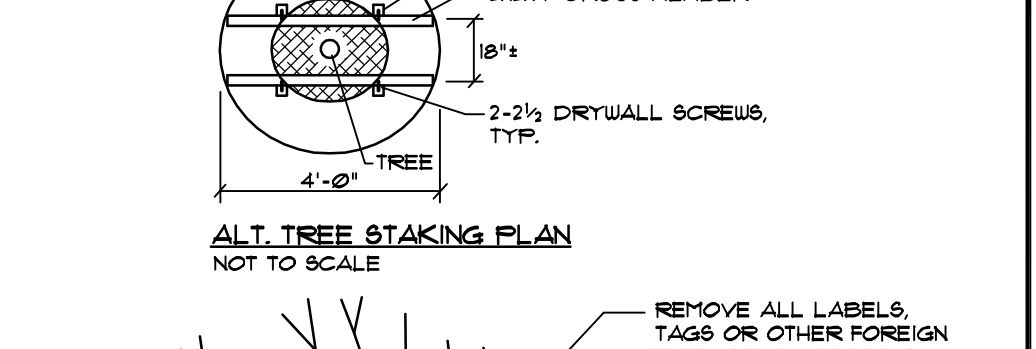
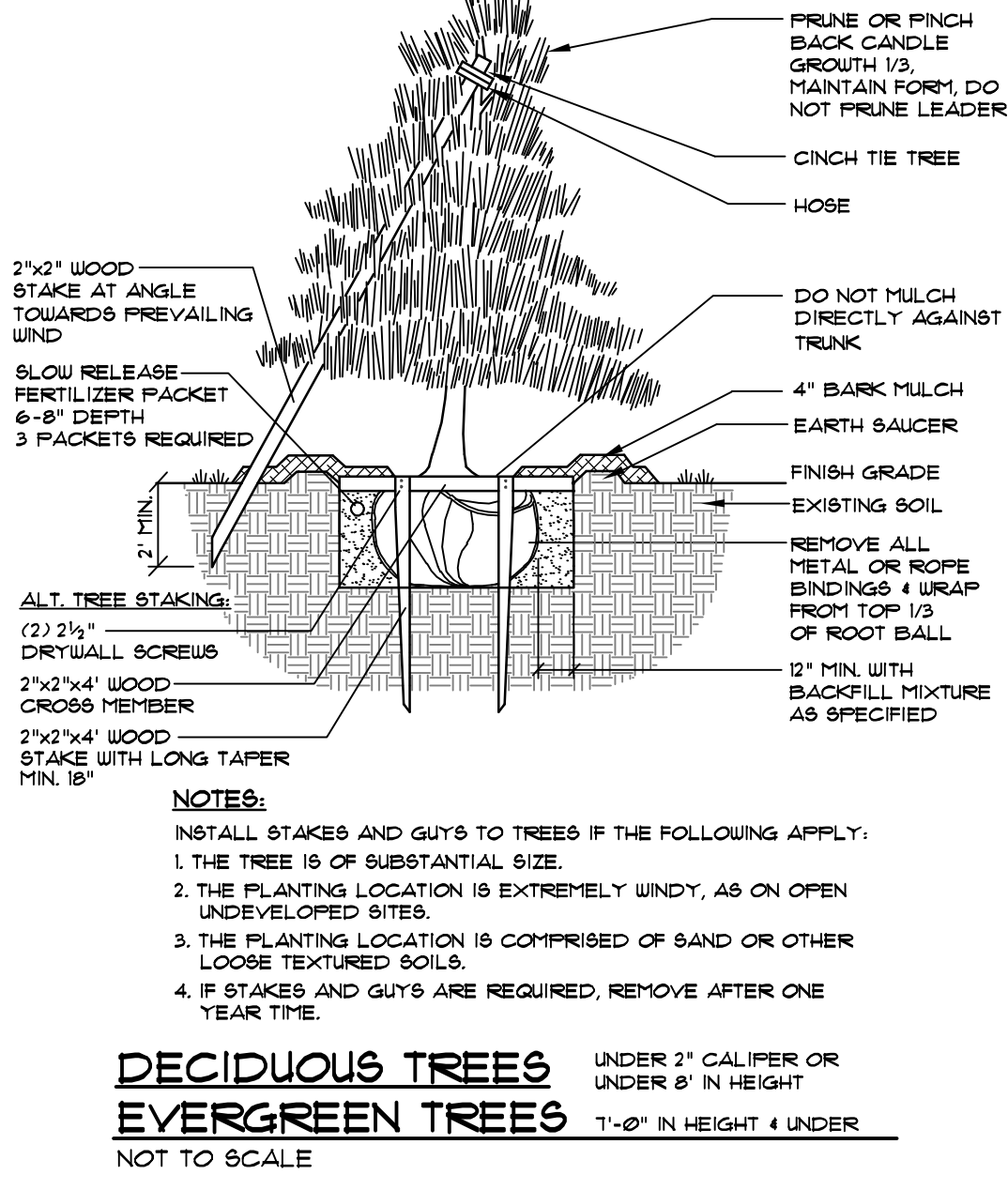
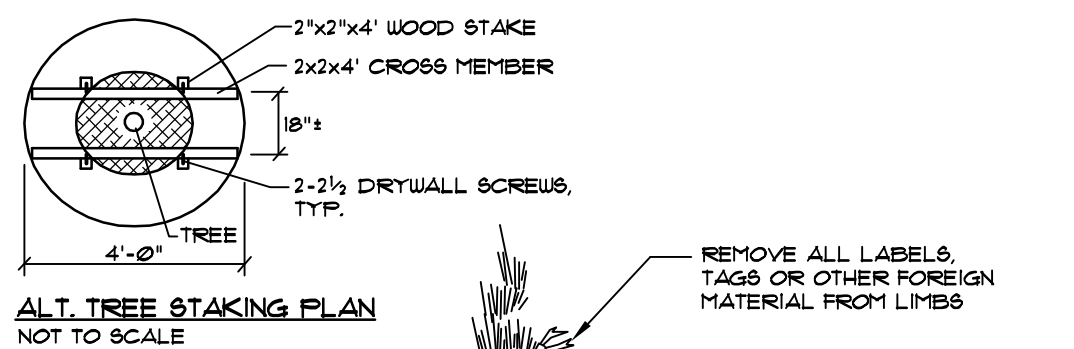
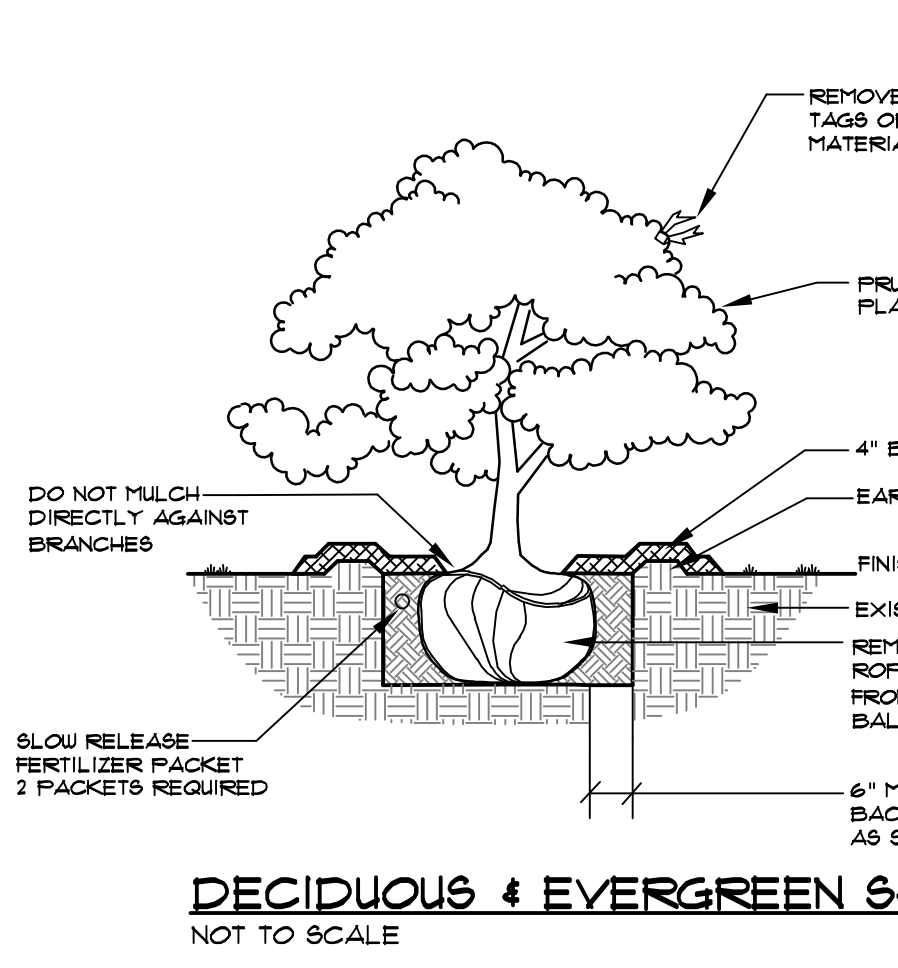
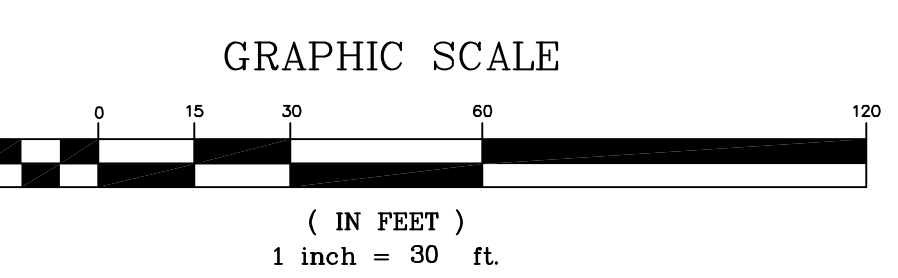
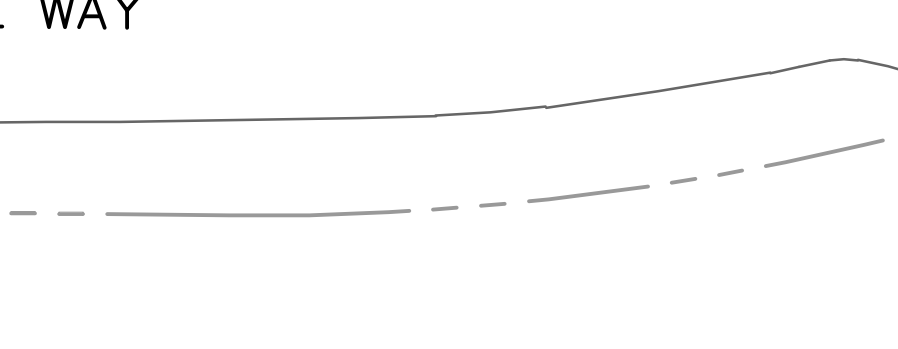
- NOTES:**
- ALL TREE SAVE AREAS MUST BE IDENTIFIED IN THE FIELD PRIOR TO SITE WORK
  - PROTECTIVE MEASURES WILL BE REQUIRED IN TREE SAVE AREAS IN ORDER TO PREVENT THE STORAGE OF MATERIALS AND EQUIPMENT.
  - IN THE CASE THAT TREE SAVE AREAS ARE AFFECTED DURING CONSTRUCTION, ADDITIONAL TREES/SHRUBS MAY BE NEEDED.

**LIGHTING LEGEND**

- KIM LIGHTING - 1A/EKG-401-4/200HP120/DB-F/H5/SQ\_POLE
- ⊙ RAAB

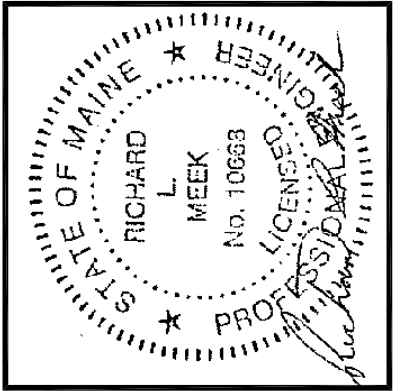
**LEGEND**

EXISTING	DESCRIPTION	PROPOSED
---	BOUNDARY LINE/ROW	---
---	ABUTTER LINE/ROW	---
---	SETBACK	---
---	EASEMENT	---
---	BUILDING	---
---	SIGN	---
---	EDGE PAVEMENT	---
---	EDGE CONCRETE	---
---	CURBLINE	---
---	TREELINE	---
○	DECIDUOUS TREE	○
⊙	CONIFEROUS TREE	⊙
---	MULCH LINE	---
---	SCREENING FENCE	---
---	BOLLARD	---
⊙	LIGHT POLE/WALL	⊙
⊙	UTILITY POLE	⊙



- NOTES:**
- INSTALL STAKES AND GUYS TO TREES IF THE FOLLOWING APPLY:
    - THE TREE IS OF SUBSTANTIAL SIZE.
    - THE PLANTING LOCATION IS EXTREMELY WINDY, AS ON OPEN UNDEVELOPED SITES.
    - THE PLANTING LOCATION IS COMPRISED OF SAND OR OTHER LOOSE TEXTURED SOILS.
    - IF STAKES AND GUYS ARE REQUIRED, REMOVE AFTER ONE YEAR TIME.

- NOTES:**
- INSTALL STAKES AND GUYS TO TREES IF THE FOLLOWING APPLY:
    - THE TREE IS OF SUBSTANTIAL SIZE.
    - THE PLANTING LOCATION IS EXTREMELY WINDY, AS ON OPEN UNDEVELOPED SITES.
    - THE PLANTING LOCATION IS COMPRISED OF SAND OR OTHER LOOSE TEXTURED SOILS.
    - IF STAKES AND GUYS ARE REQUIRED, REMOVE AFTER ONE YEAR TIME.



REV.	DATE	BY	STATUS
C	07-28-14	RLM	REVISED TO ADDRESS CONDITIONS OF APPROVAL
B	07-11-14	RLM	FINAL SITE PLAN SUBMISSION TO CITY
A	06-03-14	RLM	SITE PLAN SUBMISSION TO CITY

THIS PLAN SHALL NOT BE MODIFIED WITHOUT WRITTEN PERMISSION FROM SEBAGO TECHNICS, INC. ANY ALTERATIONS, AUTHORIZED OR OTHERWISE, SHALL BE AT THE USER'S SOLE RISK AND WITHOUT LIABILITY TO SEBAGO TECHNICS, INC.

**SEBAGO TECHNICS**  
 WWW.SEBAGOTECHNICS.COM  
 75 John Roberts Rd., Suite 1A - Suite B  
 South Portland, ME 04106  
 Tel: 207-282-2100  
 Fax: 207-783-8868

DESIGN: CHDK  
 DRAWN: MAL

PROJECT NO.: 02249  
 FIELD BOOK: 847  
 WTC: WTC

LANDSCAPE AND LIGHTING PLAN - PHASE 1  
 OF:  
 ALLAGASH BREWING COMPANY  
 INDUSTRIAL WAY  
 PORTLAND, MAINE  
 FOR:  
 50 INDUSTRIAL WAY  
 PORTLAND, MAINE 04103

DATE	SCALE
05-20-14	1" = 30'

SHEET C7.1

02249L1-PHASE 1.dwg, TAB: L1-PH1