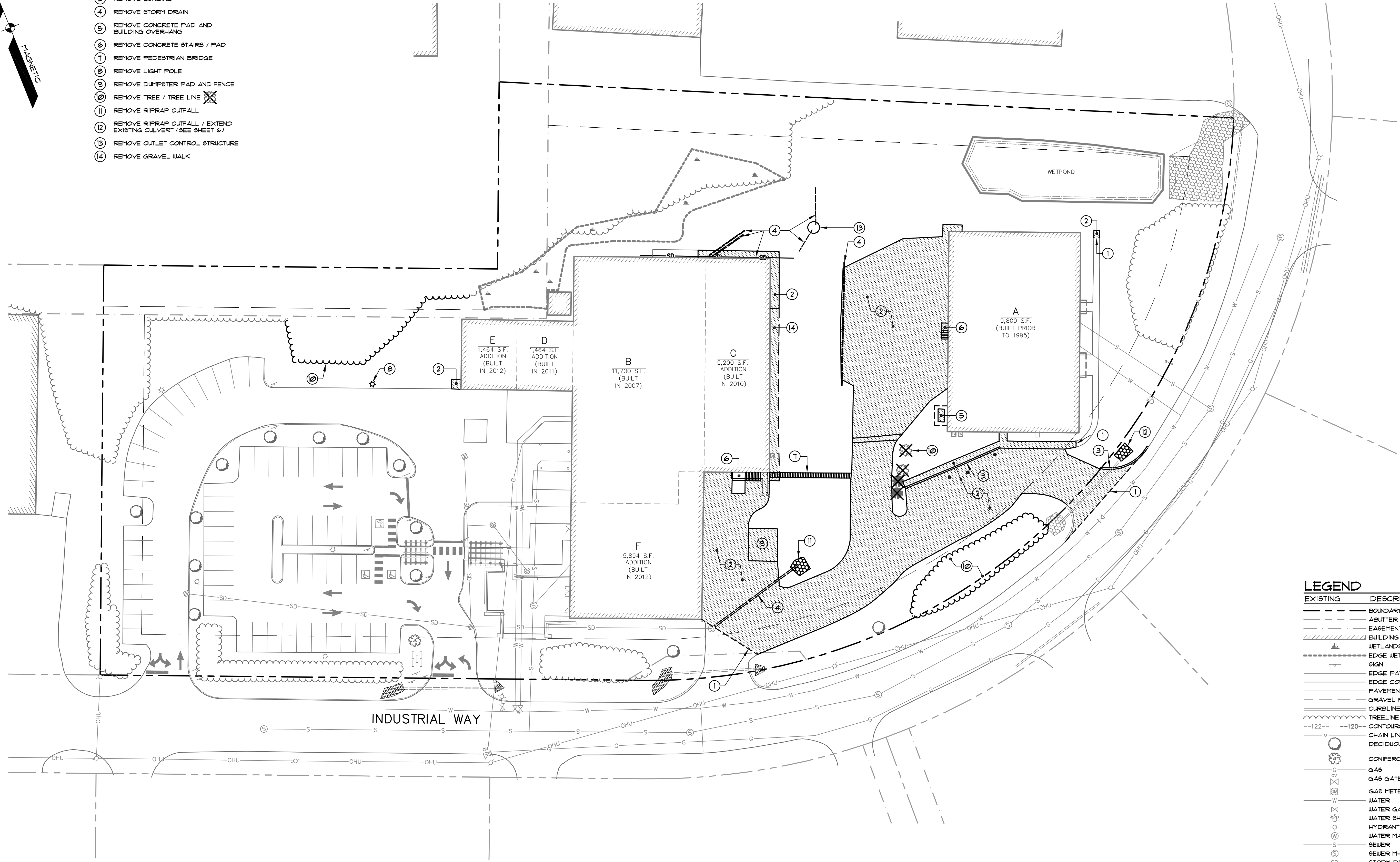


SITE DEMOLITION INDEX

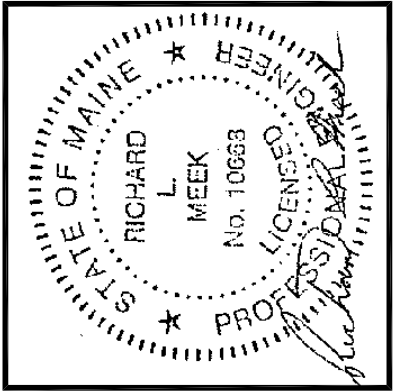
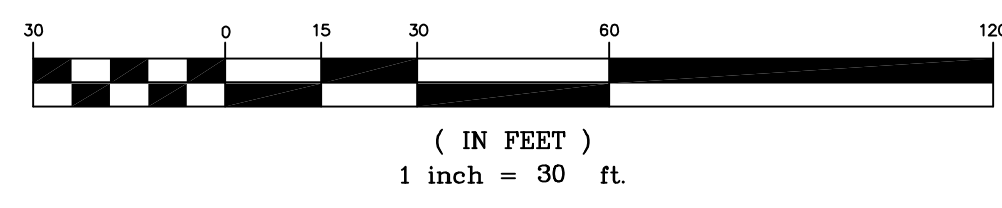
- ① SAW CUT PAVEMENT
- ② REMOVE PAVEMENT / SIDEWALK
- ③ REMOVE CURBING
- ④ REMOVE STORM DRAIN
- ⑤ REMOVE CONCRETE PAD AND BUILDING OVERHANG
- ⑥ REMOVE CONCRETE STAIRS / PAD
- ⑦ REMOVE PEDESTRIAN BRIDGE
- ⑧ REMOVE LIGHT POLE
- ⑨ REMOVE DUMPSTER PAD AND FENCE
- ⑩ REMOVE TREE / TREE LINE
- ⑪ REMOVE RIPRAP OUTFALL
- ⑫ REMOVE RIPRAP OUTFALL / EXTEND EXISTING CULVERT (SEE SHEET 6)
- ⑬ REMOVE OUTLET CONTROL STRUCTURE
- ⑭ REMOVE GRAVEL WALK



LEGEND

EXISTING	DESCRIPTION
---	BOUNDARY LINE/ROW
---	ABUTTER LINE/ROW
---	EASEMENT
---	BUILDING
---	WETLANDS
---	EDGE WETLAND SIGN
---	EDGE PAVEMENT
---	EDGE CONCRETE
---	PAVEMENT PAINT
---	GRAVEL ROAD
---	CURBLINE
---	TREELINE
---	CONTOURS
---	CHAIN LINK FENCE
○	DECIDUOUS TREE
○	CONIFEROUS TREE
○	GAS
○	GAS GATE VALVE
○	GAS METER
○	WATER
○	WATER GATE VALVE
○	WATER SHUT OFF
○	HYDRANT
○	WATER MANHOLE
○	SEWER
○	SEWER MH
○	STORM DRAIN
○	UNDERDRAIN
○	CATCH BASIN
○	DRAINAGE MH
○	CULVERT
OHU	OVERHEAD UTILITY
UGU	UNDERGROUND UTILITY
○	TRANSFORMER PAD
○	LIGHT POLE/WALL
○	UTILITY POLE
○	GUY
○	RIPRAP

GRAPHIC SCALE



REV.	DATE	BY	STATUS
C	07-28-14	RLM	REVISED TO ADDRESS CONDITIONS OF APPROVAL
B	07-11-14	RLM	FINAL SITE PLAN SUBMISSION TO CITY
A	06-03-14	RLM	SITE PLAN SUBMISSION TO CITY

THIS PLAN SHALL NOT BE MODIFIED WITHOUT WRITTEN PERMISSION FROM SEBAGO TECHNIQS, INC. ANY ALTERATIONS, AUTHORIZED OR OTHERWISE, SHALL BE AT THE USER'S SOLE RISK AND WITHOUT LIABILITY TO SEBAGO TECHNIQS, INC.

SEBAGO TECHNICS
 WWW.SEBAGOTECHNIQS.COM
 75 John Roberts Rd., Suite 1A, 250 Gossard Rd., Suite B
 South Portland, ME 04106
 Tel: 207-282-2100

PROJECT NO.	FIELD BOOK	DESIGN	CHKD	DRAWN
02249		RLM	RLM	MAL

DEMOLITION PLAN - PHASE 1
 OF: ALLAGASH BREWING COMPANY
 INDUSTRIAL WAY
 PORTLAND, MAINE
 FOR: 50 INDUSTRIAL WAY
 PORTLAND, MAINE 04103

DATE	SCALE
05-20-14	1" = 30'

SHEET C3.1