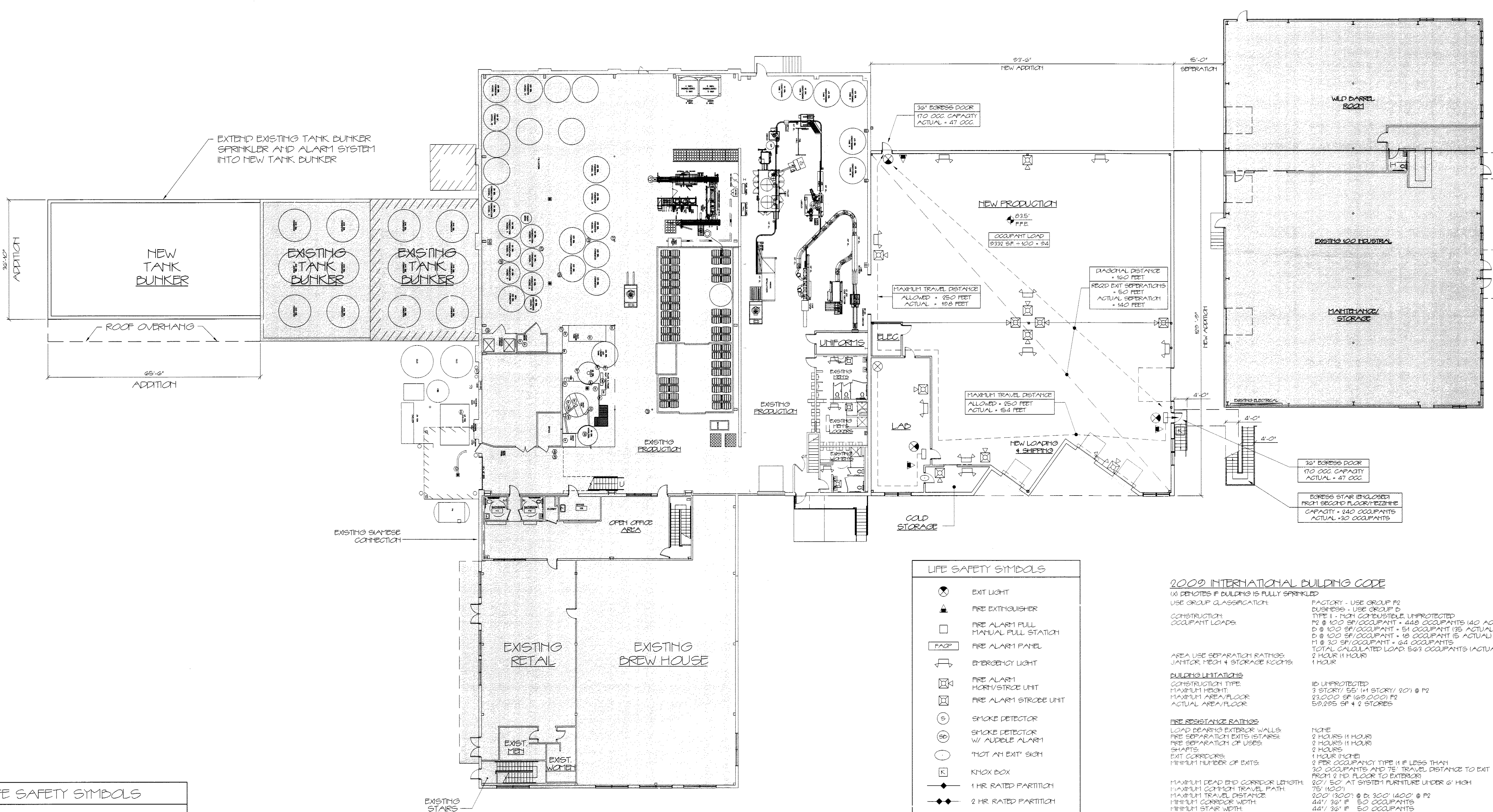


REVISIONS

NEW ADDITION FOR
ALLAGASH BREWING CO.
50 INDUSTRIAL WAY PORTLAND, MAINE

ARCHITECTURE
INTERIOR DESIGN
P.O. BOX 6179 FALMOUTH, MAINE 04105
(207) 871-5900
(207) 871-9308

GRANT HAYS ASSOCIATES
FIRST FLOOR
FACILITY CODE
COMPLIANCE PLAN
DRAWING TITLE
SCALE 1/16" = 1'-0"
DATE 7/25/2014
DRAWN BY SAM/MPH
JOB NO. 140560
DRAWING NO.
AC-1



FIRST FLOOR FACILITY CODE COMPLIANCE PLAN
SCALE: 1/16" = 1'-0"

LIFE SAFETY SYMBOLS

	EXIT LIGHT
	FIRE EXTINGUISHER
	FIRE ALARM PULL MANUAL PULL STATION
	FIRE ALARM PANEL
	EMERGENCY LIGHT
	FIRE ALARM HORN/STROBE UNIT
	FIRE ALARM STROBE UNIT
	SMOKE DETECTOR
	SMOKE DETECTOR W/ AUDIBLE ALARM
	"HOT AIR" EXIT SIGN
	KNOCK BOX
	1 HR. RATED PARTITION
	2 HR. RATED PARTITION

- LIFE SAFETY NOTES:**
1. THE NEW BUILDING ADDITION SHALL HAVE AN NFPA 13 FIRE SUPPRESSION SPRINKLER SYSTEM INSTALLED. SPRINKLER SYSTEM SHALL BE INSTALLED BY A CERTIFIED SPRINKLER CONTRACTOR AND SHALL BE REVIEWED AND APPROVED BY THE STATE OF MAINE FIRE MARSHAL AS WELL AS THE LOCAL AUTHORITY HAVING JURISDICTION. THE CONTRACTOR SHALL BEAR SOLE RESPONSIBILITY FOR THE DESIGN AND INSTALLATION OF THE SYSTEM FOR OCCUPANCY.
 2. THE SPRINKLER CONTRACTOR SHALL VERIFY THE EXISTING BUILDING SPRINKLER/FIRE ALARM SYSTEM HAS SUFFICIENT CAPACITY FOR EXTENDING INTO THE NEW BUILDING ADDITION.
 3. THE CLOSEST FIRE HYDRANT TO THE BUILDING HAS A STATIC PRESSURE OF 80 PSI AND A FLOW OF 2,348 GPM.
 4. EXTEND THE EXISTING FIRE ALARM SYSTEM INTO THE NEW ADDITION AS REQUIRED FOR COMPLIANCE WITH NFPA 101 LIFE SAFETY CODE. COORDINATE WITH SPRINKLER SYSTEM MODIFICATION VERIFY LOCATION OF ALARM AND NOTIFICATION PANELS WITH THE AUTHORITY HAVING JURISDICTION.
 5. SEE SHEET A-15 - ACCESSIBILITY DETAILS FOR MOUNTING HEIGHTS OF LIFE SAFETY DEVICES.

LIFE SAFETY SYMBOLS

	EXIT LIGHT
	FIRE EXTINGUISHER
	FIRE ALARM PULL MANUAL PULL STATION
	FIRE ALARM PANEL
	EMERGENCY LIGHT
	FIRE ALARM HORN/STROBE UNIT
	FIRE ALARM STROBE UNIT
	SMOKE DETECTOR
	SMOKE DETECTOR W/ AUDIBLE ALARM
	"HOT AIR" EXIT SIGN
	KNOCK BOX
	1 HR. RATED PARTITION
	2 HR. RATED PARTITION

2009 INTERNATIONAL BUILDING CODE

(X) DENOTES IF BUILDING IS FULLY SPRINKLERED
USE GROUP CLASSIFICATION: FACTORY - USE GROUP F3
CONSTRUCTION: TYPE I - NON COMBUSTIBLE, UNPROTECTED
OCCUPANT LOADS: P2 @ 100 SF/OCCUPANT = 448 OCCUPANTS (400 ACTUAL)
D @ 100 SF/OCCUPANT = 54 OCCUPANTS (35 ACTUAL)
D @ 100 SF/OCCUPANT = 18 OCCUPANTS (15 ACTUAL)
M @ 20 SF/OCCUPANT = 64 OCCUPANTS
TOTAL CALCULATED LOAD: 569 OCCUPANTS (ACTUAL 139)
AREA USE SEPARATION RATINGS: JANITOR, MECH & STORAGE ROOMS: 2 HOUR (1 HOUR)
BUILDING LIMITATIONS: UNPROTECTED
CONSTRUCTION TYPE: 3 STORY/ 55' (41 STORY/ 101') @ P2
MAXIMUM HEIGHT: 23,000 SF (65,000) P2
ACTUAL AREA/FLOOR: 59,295 SF @ 2 STORES
FIRE RESISTANCE RATINGS: LOAD BEARING EXTERIOR WALLS: NONE
FIRE SEPARATION EXITS (STAIRS): 2 HOURS (1 HOUR)
FIRE SEPARATION OF USES: 2 HOURS
SHAFTS: 1 HOUR (NONE)
EXIT CORRIDORS: 1 HOUR (NONE)
MINIMUM NUMBER OF EXITS: 0 FOR OCCUPANCY TYPE (1 IF LESS THAN 30 OCCUPANTS AND 75' TRAVEL DISTANCE TO EXIT FROM 2 ND FLOOR TO EXTERIOR)
MAXIMUM DEAD END CORRIDOR LENGTH: 20' @ 50' AT GROUND FLOOR UNDER 6' HIGH
MAXIMUM COMMON TRAVEL PATH: 75' (100')
MAXIMUM TRAVEL DISTANCE: 300' (300') @ B; 300' (400') @ P2
MINIMUM CORRIDOR WIDTH: 44' @ 50' F; 50 OCCUPANTS
MINIMUM STAIR WIDTH: 44' @ 36' F; 50 OCCUPANTS
MINIMUM RISER HEIGHT: 7"
MINIMUM TREAD DEPTH: 11"
MINIMUM RAMP WIDTH: 44' @ 36' F; 50 OCCUPANTS
MINIMUM RAMP PITCH: 1/2"
HANDRAILS: SAME AS NFPA 101
MINIMUM CEILING HEIGHT: 7'-6"

FIRE ALARM SYSTEMS: REQUIRED
FIRE SPRINKLER SYSTEM: REQUIRED
PORTABLE FIRE EXTINGUISHERS: REQUIRED
EXIT LIGHTING: REQUIRED
E-EMERGENCY LIGHTING: REQUIRED

BUILDING LIVE LOADS: OFFICE: 50 PSF
LOBBIES: 100 PSF
CORRIDORS: 30 PSF
STORAGE: 125 PSF @ LIGHT; 250 PSF @ HEAVY

MAINE STATE PLUMBING CODE/UPC

OCCUPANCY CLASSIFICATION: FACTORY 4 ANULLARY BUSINESS/MERCANTILE
OCCUPANCY AREA: 51,177 SF
OCCUPANCY LOAD: 569 (139 ACTUAL PER IBC EXEMPTION)

FACTORY:	75 OCCUPANTS - 38 MALE/37 FEMALE (H) INDICATES EXISTING COUNT
FIXTURES:	TOILETS URINALS LAVS SHOWERS
MEN:	(3) 3 (1) 0 (3) 4 (1) 0
WOMEN:	(3) 3 (1) 0 (3) 4 (1) 0
DRINKING FOUNTAIN:	1/50 OCCUPANTS
MERCANTILE:	64 OCCUPANTS (32 MALE/32 FEMALE)
FIXTURES:	TOILETS URINALS LAVS SHOWERS
MEN:	2 1 1 1
WOMEN:	2 0 1 1