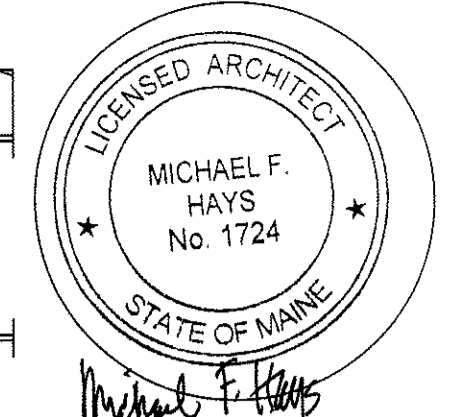


REPRODUCTION OR MISUSE OF THIS DOCUMENT WITHOUT WRITTEN PERMISSION FROM GRANT HAYS ASSOCIATES IS PROHIBITED.



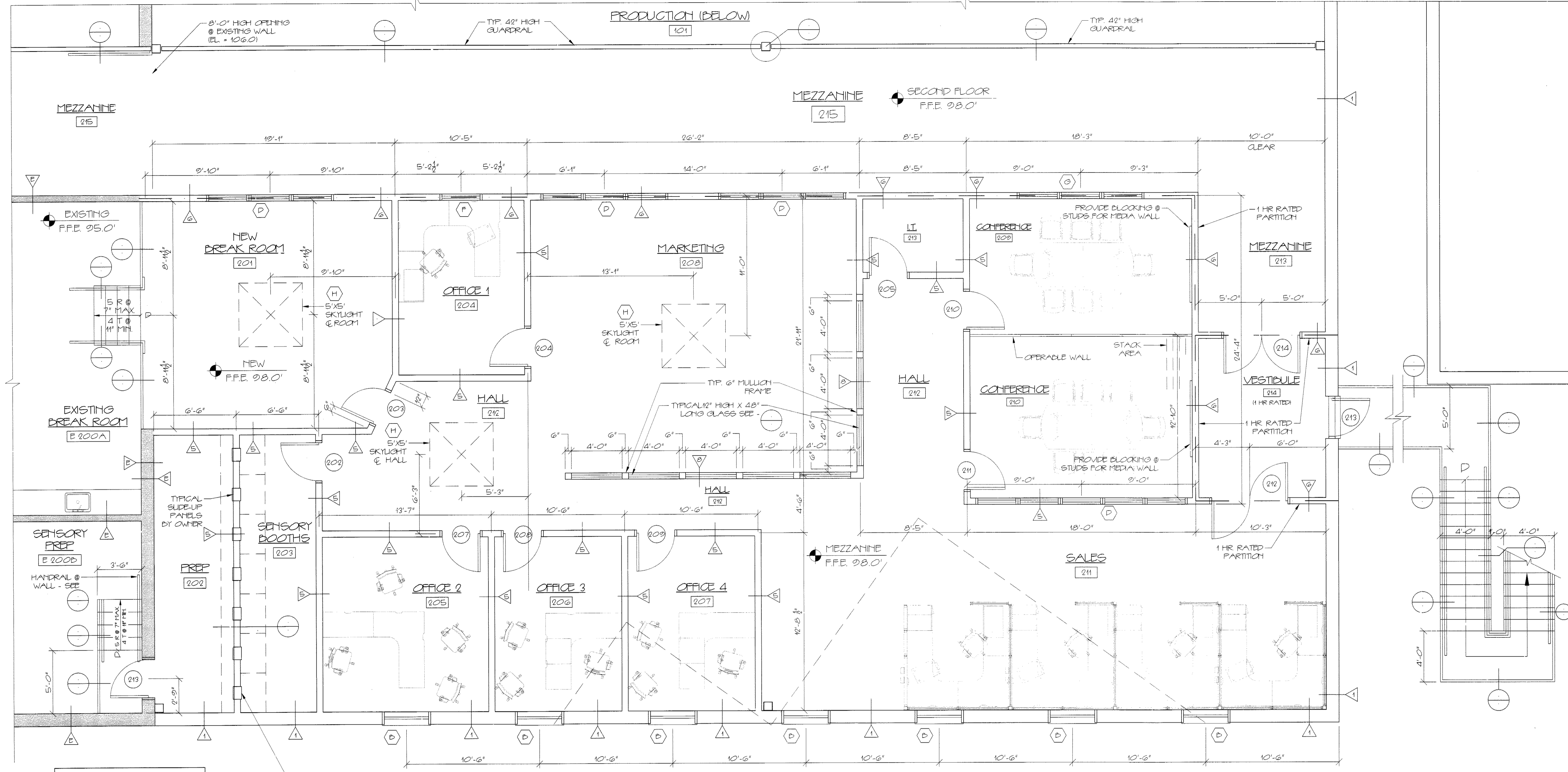
REVISIONS

NEW ADDITION FOR
ALLAGASH BREWING CO.
50 INDUSTRIAL WAY PORTLAND, MAINE

ARCHITECTURE
INTERIOR DESIGN
P.O. BOX 6179 FALMOUTH, MAINE 04105
PHONE: (207) 871-5900
FAX: (207) 871-9308

ENLARGED PLAN
AT OFFICES

SCALE 1/4" = 1'-0"
DATE 7/25/2014
DRAWN BY SAM/MFH
JOB NO. 140560
DRAWING NO. **A-4**

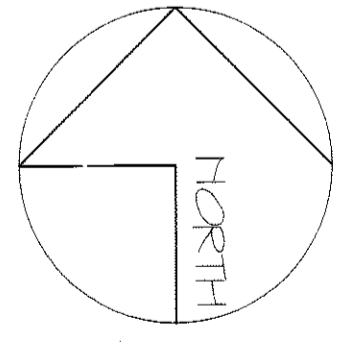


PARTITION LEGEND

KEY	DETAIL
	EXISTING
	1 A-10
	2 A-10
	3 A-10
	4 A-10
	5 A-10
	6 A-10
	7 A-10
	8 A-10

EXISTING PARTITIONS
 NEW PARTITIONS
 DEMOLITION WALLS

NOTE: COORDINATE DOOR PASS-THRU OPENING FRAMING SIZE WITH OWNER FURRING ROUGH-FRAMING OF PARTITION



SECOND FLOOR PLAN AT MEZZANINE LEVEL
SCALE 1/4" = 1'-0"