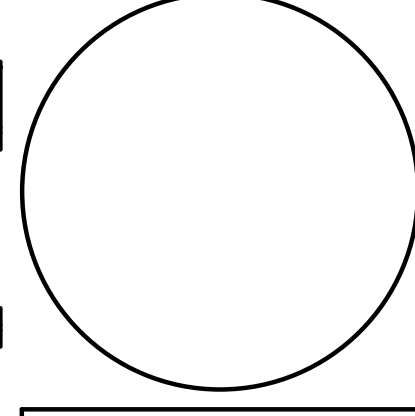


COPYRIGHT  
REPRODUCTION OR MISUSE OF  
THIS DOCUMENT WITHOUT  
WRITTEN PERMISSION FROM  
GRANT HAYS ASSOCIATES IS  
PROHIBITED.



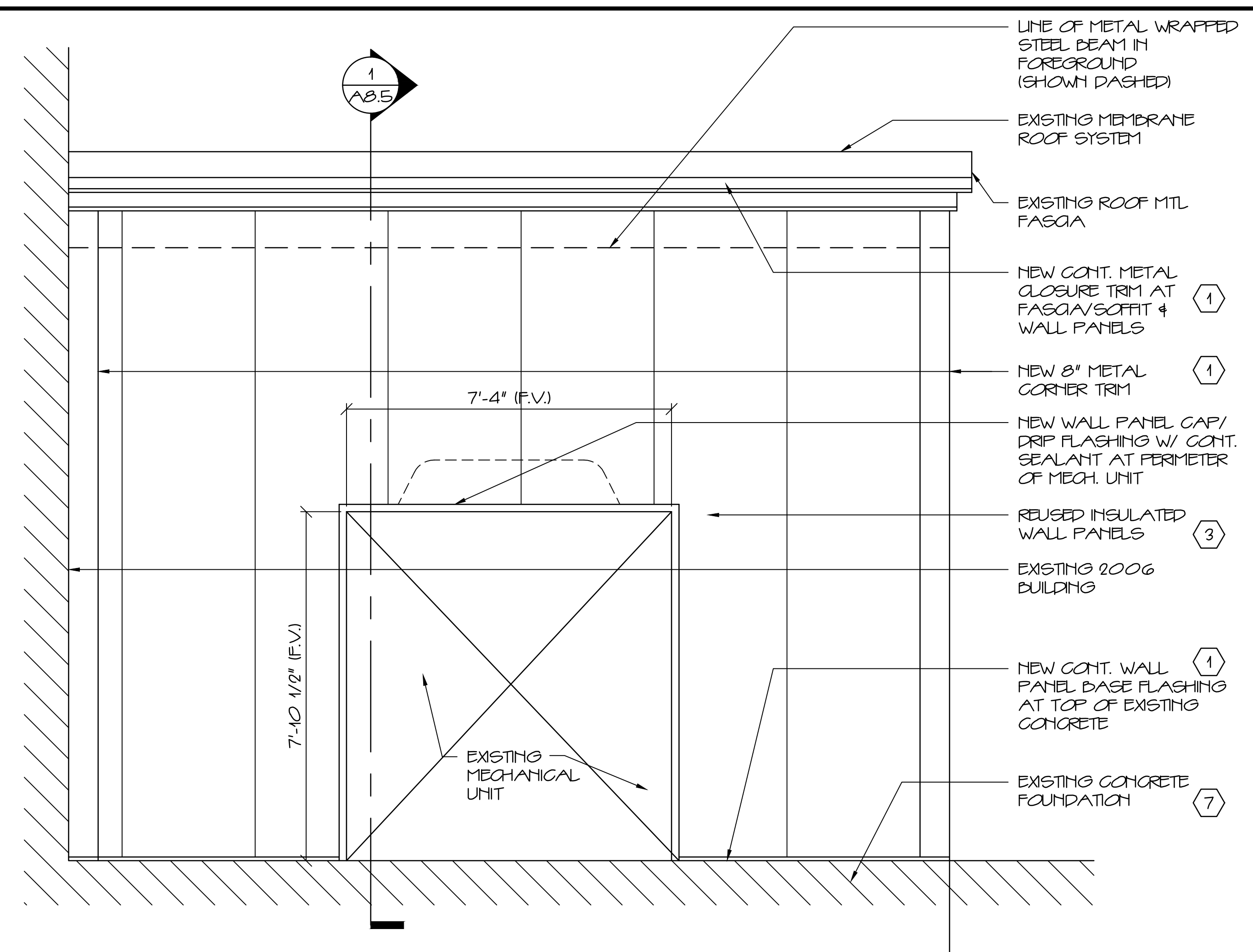
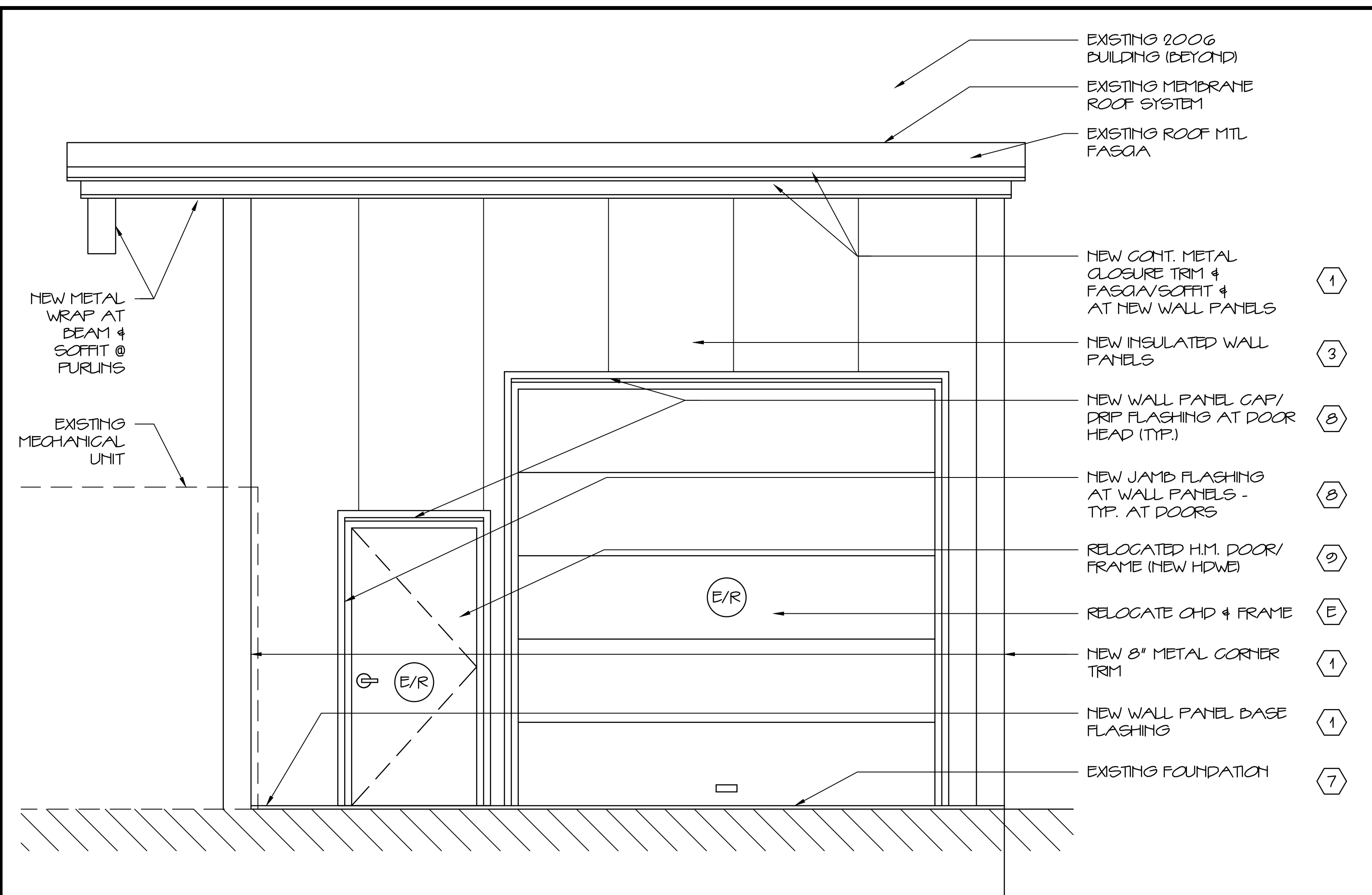
REVISIONS

NEW ADDITION FOR  
**ALLAGASH BREWING CO.**  
50 INDUSTRIAL WAY PORTLAND, MAINE

ARCHITECTURE  
INTERIOR DESIGN  
P.O. BOX 6179 FALMOUTH, MAINE 04105

BOILER  
ENCLOSURE  
ELEVATIONS

SCALE AS NOTED  
DATE 29 MAR 13  
DRAWN BY SAM/MPH  
JOB NO. 120701  
DRAWING NO.  
**A8.4**



COLOR SCHEDULE	
TAG	COLOR
①	LIGHT BRONZE
②	MILL ALUMINUM
③	LIGHT STONE
④	RUSTED "STEEL"
⑤	"GALVANIZED" STEEL & ROUGH TIMBER
⑥	MILL ALUMINUM
⑦	CONCRETE
⑧	LIGHT BRONZE
⑨	BLUE
Ⓔ	EXISTING

NOTE: MATCH EXISTING BUILDING INSULATED EXTERIOR METAL PANELS FROM 2010 ADDITION AT NEW BUILDING ADDITION MATCH TRIM PROFILES AND COLORS AS INDICATED AND AS REASONABLY AVAILABLE.

