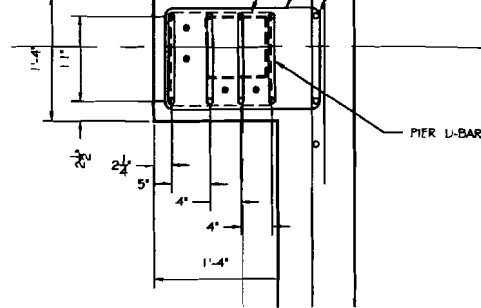
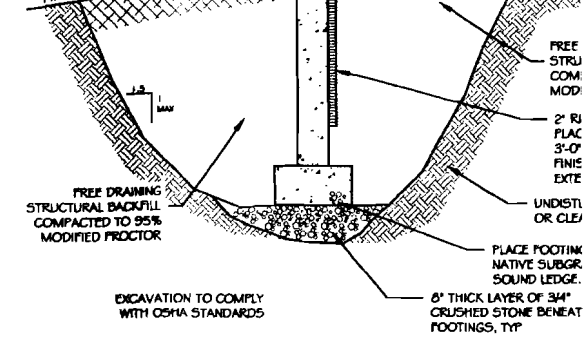


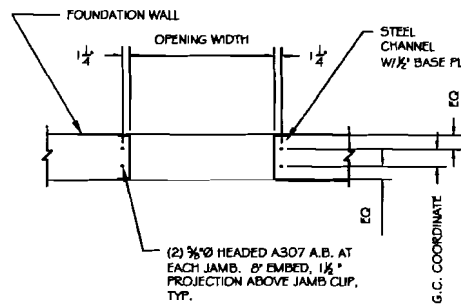
C4 PIER P5 AT F.9-I.D.
SCALE: NO SCALE



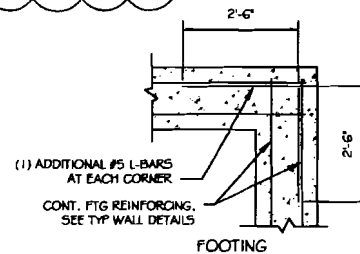
C3 PIER P4 AT F.9-I.E.
SCALE: NO SCALE



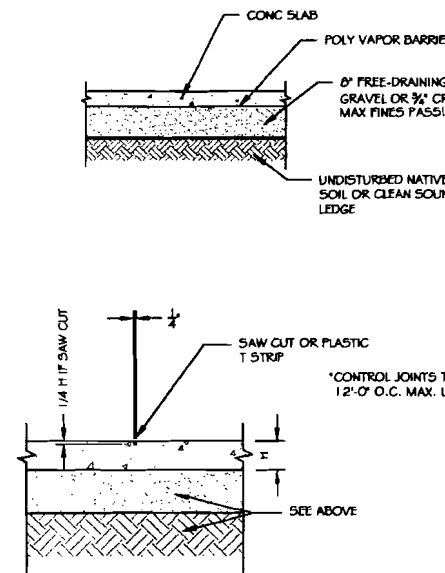
C2 TYPICAL EARTHWORK DETAIL
SCALE: NO SCALE



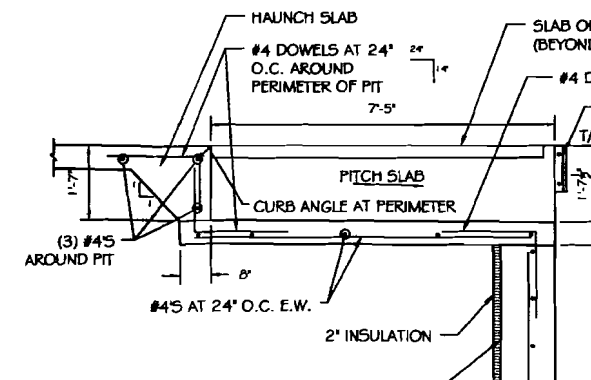
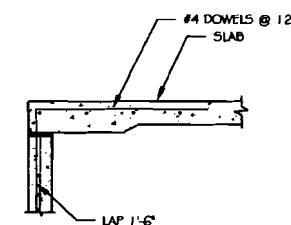
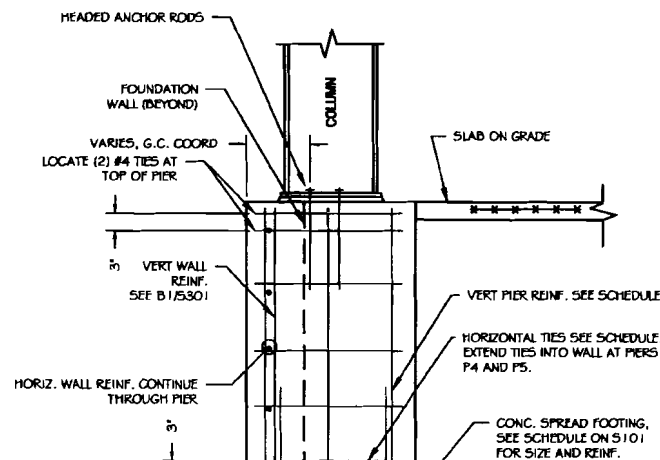
B4 ANCHORS AT FRAMED OPENINGS
SCALE: NO SCALE



B3 FOUNDATION CORNER REINFORCING
SCALE: 1" = 1'-0"

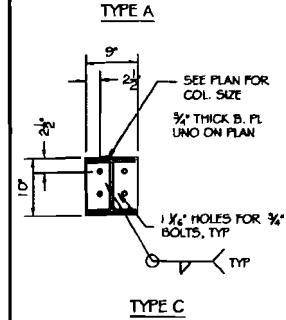


B2 TYPICAL SLAB DETAILS
SCALE: NO SCALE



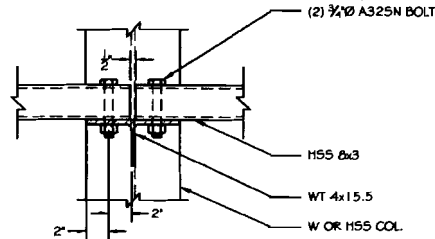
2. ROOF DESIGN UNIFORM LOADS:
DL=22PSF
SL = 42 PSF ($F_g = 60$ PSF)
WL = 10 PSF (NET UPLIFT).
3. FLOOR DESIGN LOADS: 125 PSF LIGHT WAREHOUSE STORAGE + EQUIPMENT POST LOADS
4. LATERAL LOADS:
WIND: $V=98$ MPH, EXP B, $H=30$ FT, ASCE 7 SIMPLIFIED PROCEDURE
 $F_s=30=20$ PSF MAX WFRS AND COMFLOORING.
SEISMIC: $S_s=0.31$ $S_1=0.078$, SITE D, $S_{ds}=0.314$, $S_{m1}=0.19$
OCC CAT. 1, $SDC = B$, $R=3.5$ ORD. STEEL MOMENT FRAMES
5. CONTRACTOR SHALL BRING TO THE ATTENTION OF THE ENGINEER ANY CONDITIONS DIFFERENT FROM THOSE SHOWN ON THE DRAWINGS AND ALSO ANY CONDITIONS THAT PREVENT THE CONTRACTOR'S COMPLETION OF THE WORK AS SHOWN ON THE CONSTRUCTION DRAWINGS.

- WITH THE AFFECTED PART OF THE WORK.
9. UNLESS OTHERWISE NOTED, DETAILS, SECTIONS, AND NOTES SHOWN ON ANY DRAWING SHALL BE CONSIDERED TYPICAL FOR ALL SIMILAR DETAILS.
 10. THESE DRAWINGS DO NOT SHOW SIZE, LOCATION OR TYPE OF OPENING IN THE FOUNDATION SYSTEM FOR ELECTRICAL, PLUMBING OR MECHANICAL EQUIPMENT. THE GENERAL CONTRACTOR SHALL BE RESPONSIBLE FOR LOCATING THESE ITEMS.
 11. ALL SHOP DRAWINGS PROVIDED BY OTHERS SHALL BE SUBMITTED TO THE ENGINEER FOR REVIEW PRIOR TO FABRICATION OF MATERIAL OR THE PURCHASE OF NON-RETURNABLE STOCK. DIMENSIONAL REVIEW IS THE CONTRACTOR'S RESPONSIBILITY.
 12. USE PERIMETER DRAINS WHERE SHOWN. DRAIN TO APPROPRIATE OUTLET.



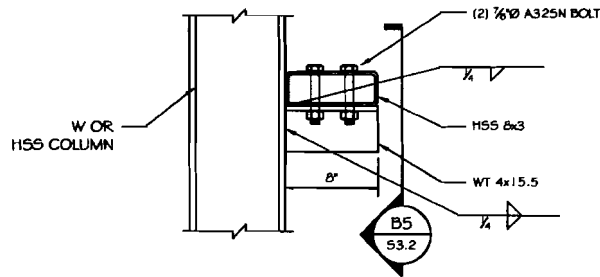
- NOTES:
1. ALL ANCHOR RODS AT PIER T
 2. ALL ANCHOR RODS AT PIER
 3. ALL COLUMNS TO BEAR ON 3/4\"/>

C4 NOTES



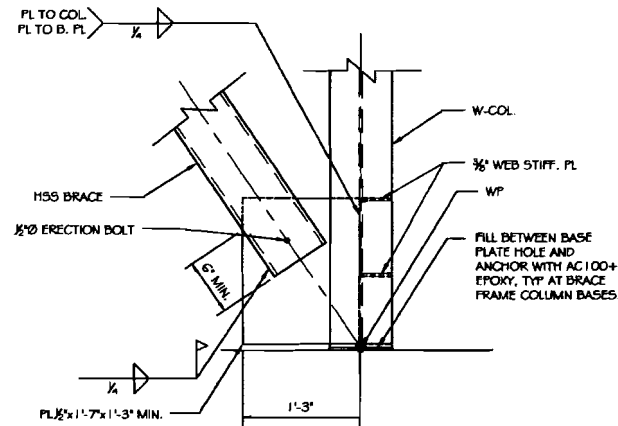
B5 HSS WIND GIRT CONNECTION

SCALE: 1" = 1'-0"



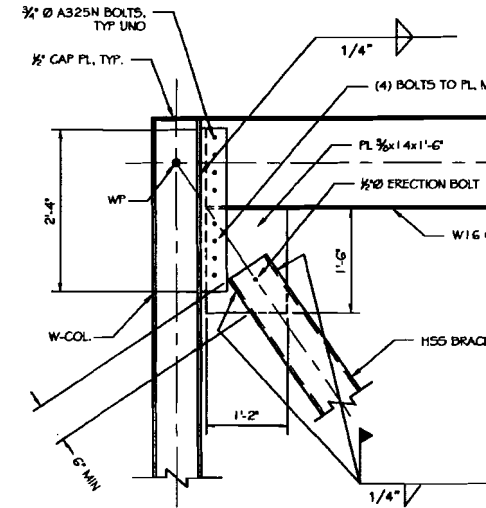
B4 HSS WIND GIRT CONNECTION SECTION

SCALE: 1" = 1'-0"



B3 BRACE FRAME CONNECTION

SCALE: 1" = 1'-0"



B2 BRACE FRAME CONNECTION

SCALE: 3/4" = 1'-0"

