



ASSOCIATED DESIGN PARTNERS INC.
 80 Leighton Road
 Falmouth, Maine 04105
 Office: (207) 878-1751
 Fax: (207) 878-1788
 E-Mail: adp@adpengineering.com

THIS DRAWING, DESIGN AND ELECTRONIC FILE ARE THE PROPERTY OF ASSOCIATED DESIGN PARTNERS, INC. THE REPRODUCTION, COPYING OR ANY OTHER USE OF THIS DOCUMENT WITHOUT WRITTEN CONSENT IS PROHIBITED.

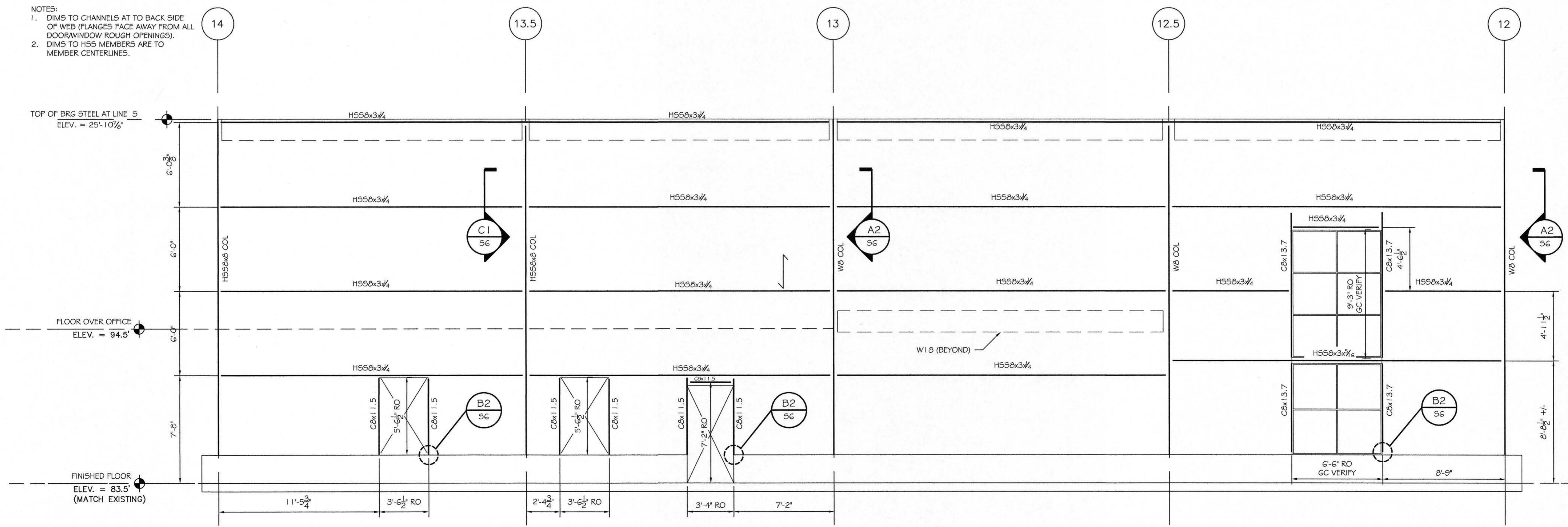
PROJECT: **ALLAGASH 2018 PACKAGING EXPANSION**
50 INDUSTRIAL WAY, PORTLAND ME
 FOR: ALLAGASH BREWING CO.
 SHEET TITLE: **FRAMING ELEVATIONS**
ISSUED FOR PERMITTING

NO.	BY	REVISIONS DESCRIPTION	DATE
1	ASW		
2	ASW		
3	ASW		
4	ASW		

DATE : 4/4/18
 SCALE : AS NOTED
 DESIGN BY: ASW
 DRAWN BY: RSC
 FILE #:
 PROJECT NUMBER:
18001
 SHEET NO:
97

B4

- NOTES:
 1. DIMS TO CHANNELS AT TO BACK SIDE OF WEB (FLANGES FACE AWAY FROM ALL DOOR/WINDOW ROUGH OPENINGS).
 2. DIMS TO HSS MEMBERS ARE TO MEMBER CENTERLINES.



A4

EAST (REAR) ELEVATION WALL GIRTS - LINE S
 SCALE: 1/4" = 1'-0"