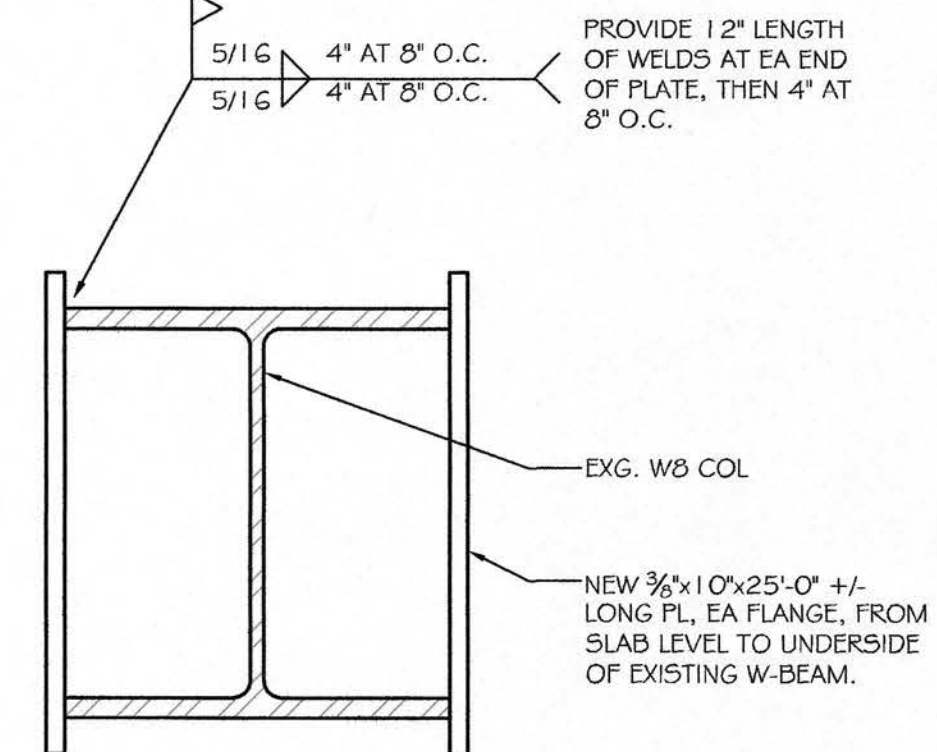
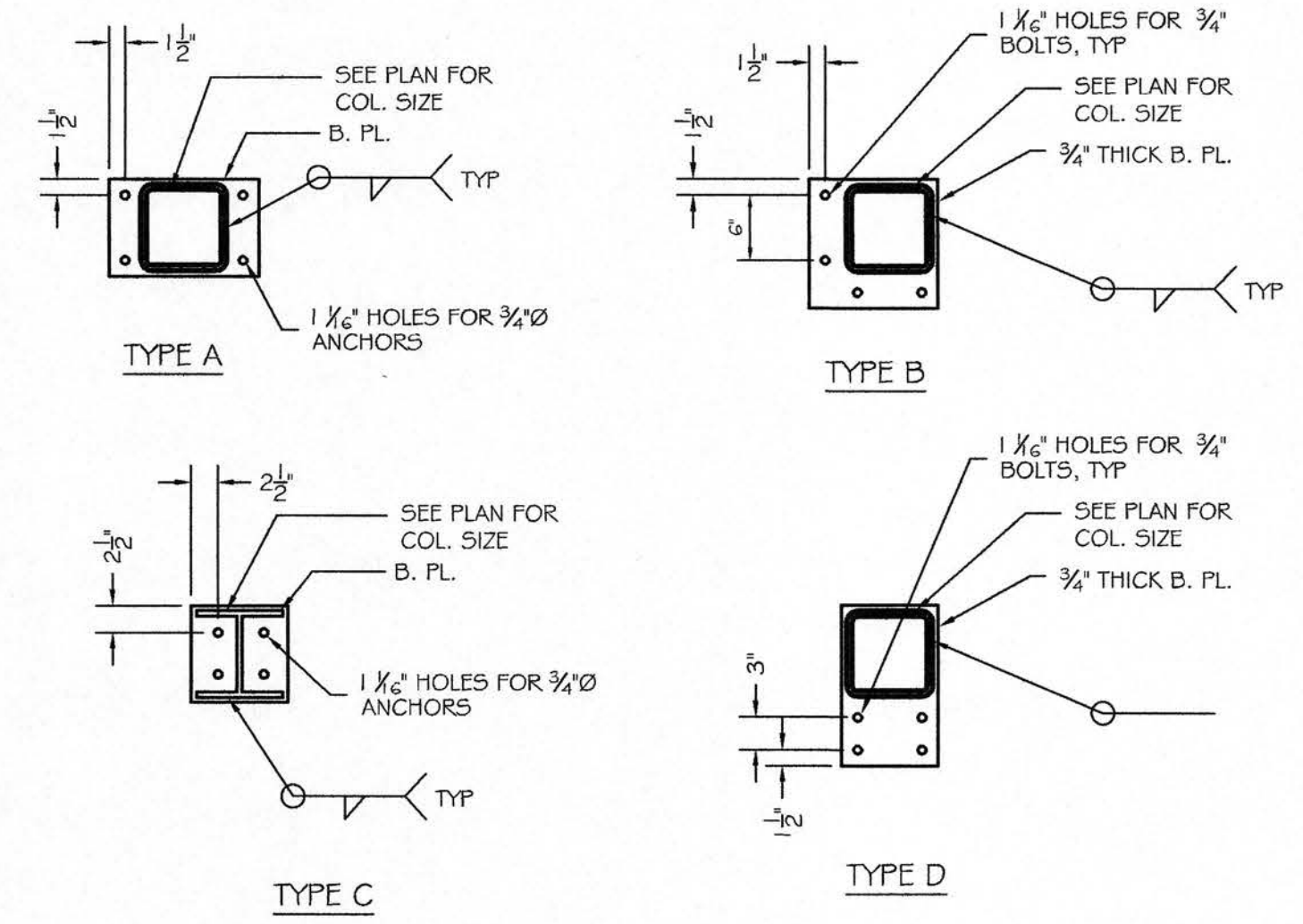


C4 COLUMN REINFORCING DETAIL
SCALE: 3" = 1'-0"

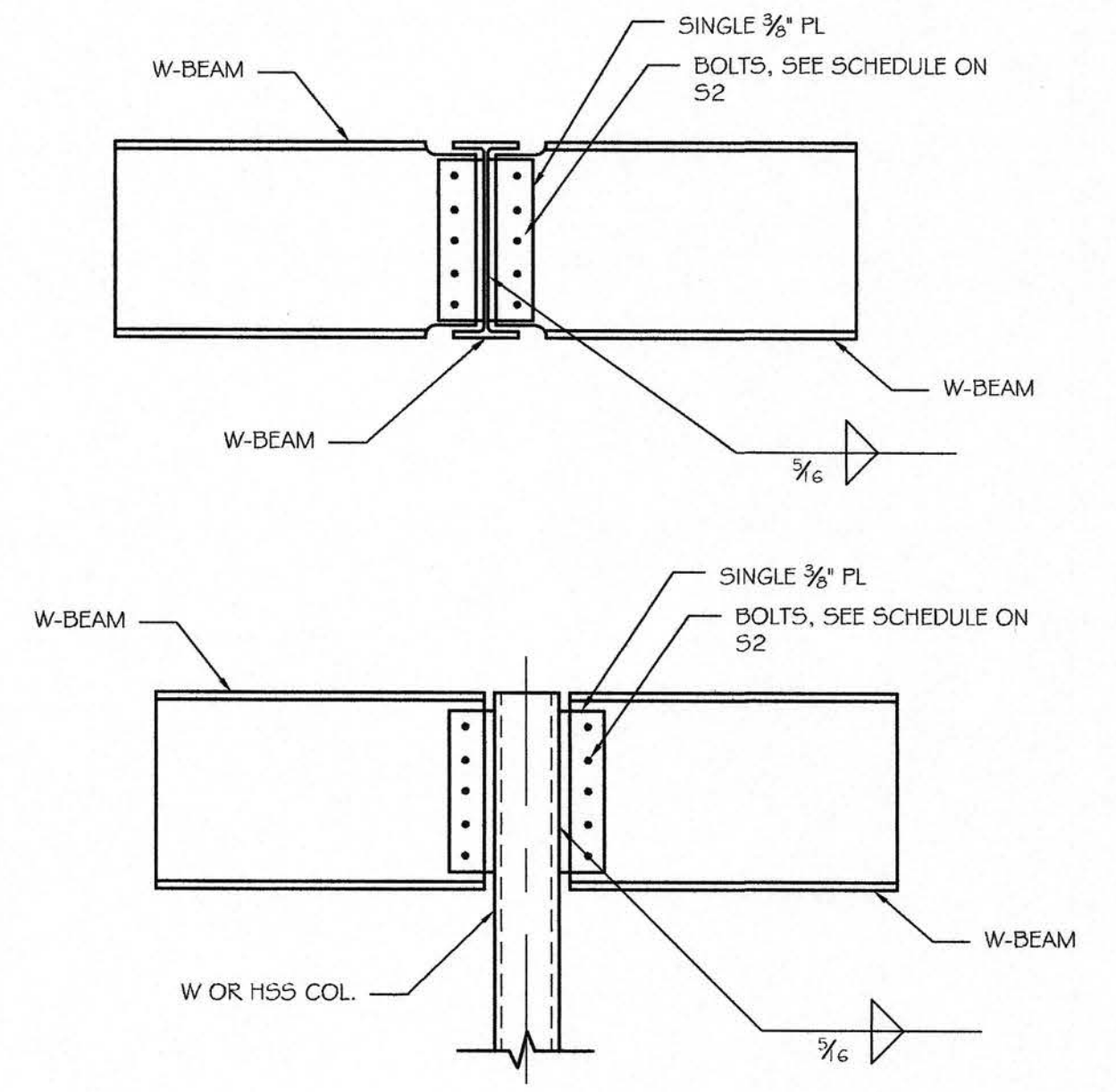


C3 COLUMN REINFORCING DETAIL
SCALE: 3" = 1'-0"

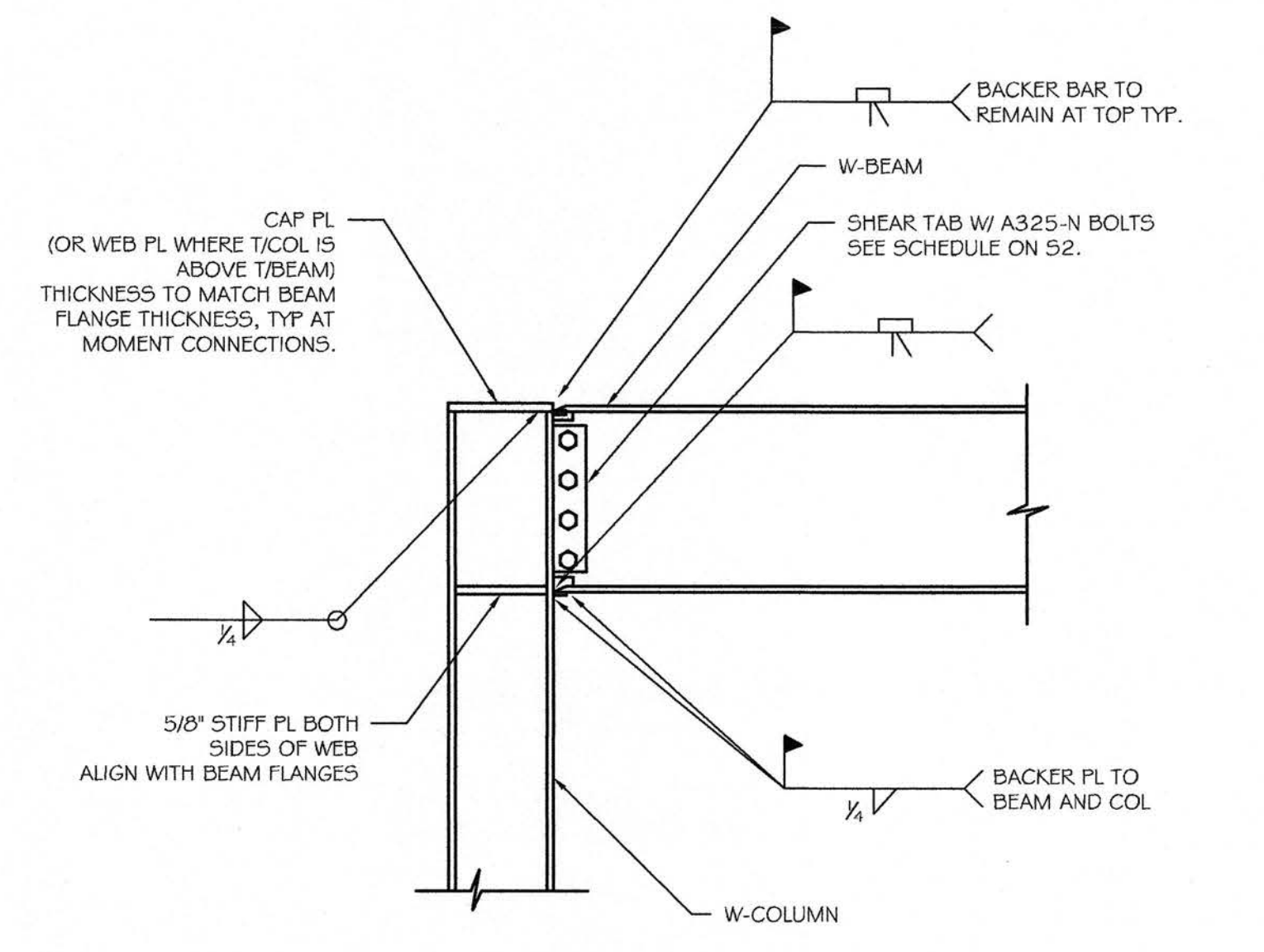


NOTES:
1. ALL ANCHOR RODS AT COLUMNS 14-5, 14-5.5, 12-5, 12-5.5, 12.5-5, 13-5, TO BE 3/4"x18" EMBED A36 HEADED ANCHORS, TYP UNO
2. ALL OTHER ANCHOR RODS TO BE 3/4"x9" EMBED A36 HEADED ANCHORS, TYP UNO
3. ALL COLUMNS TO BEAR ON 3/4" NON-SHRINK GROUT AND 1/4" LEVELLING PLATE

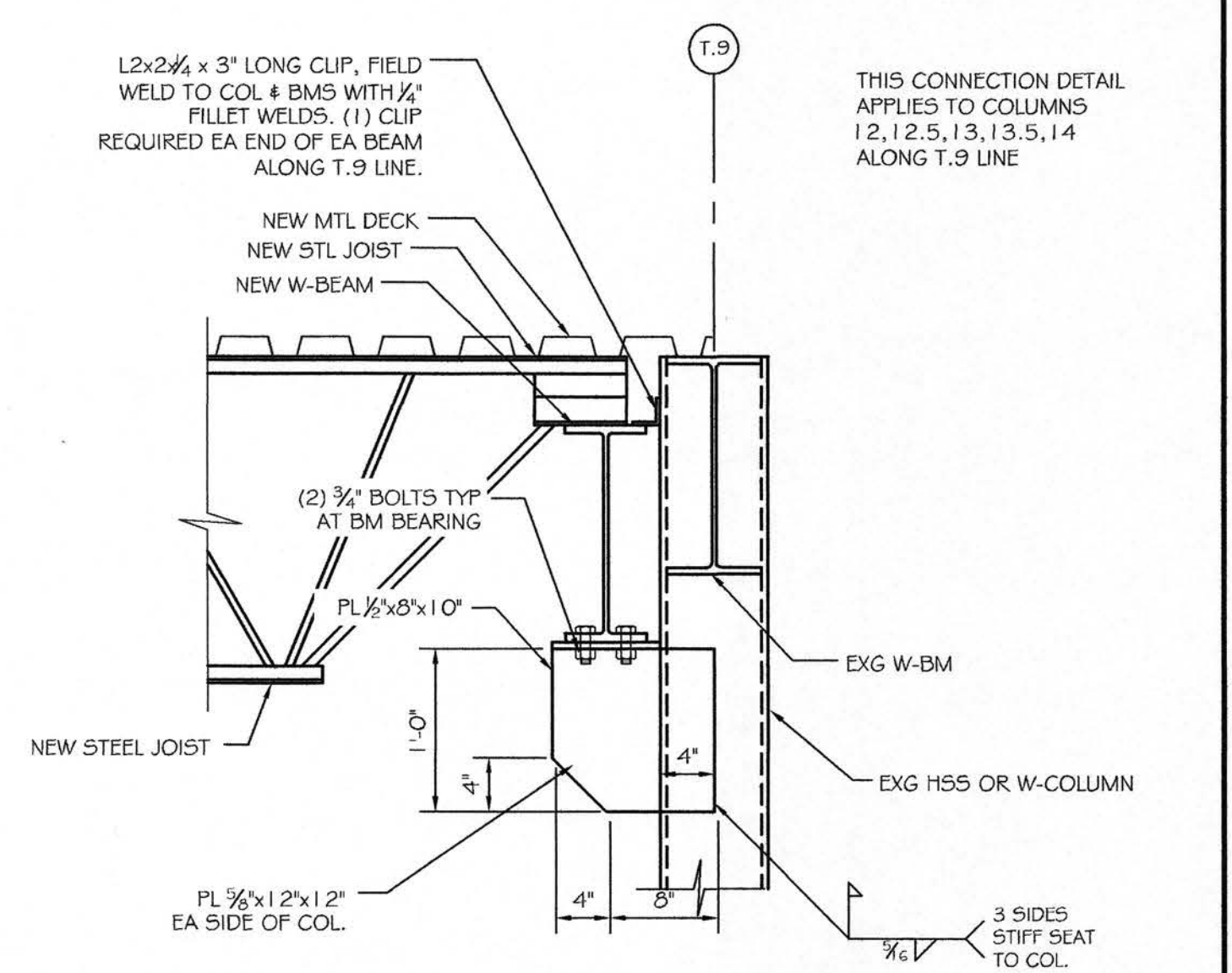
C2 BASE PLATE DETAILS
SCALE: 3/4" = 1'-0"



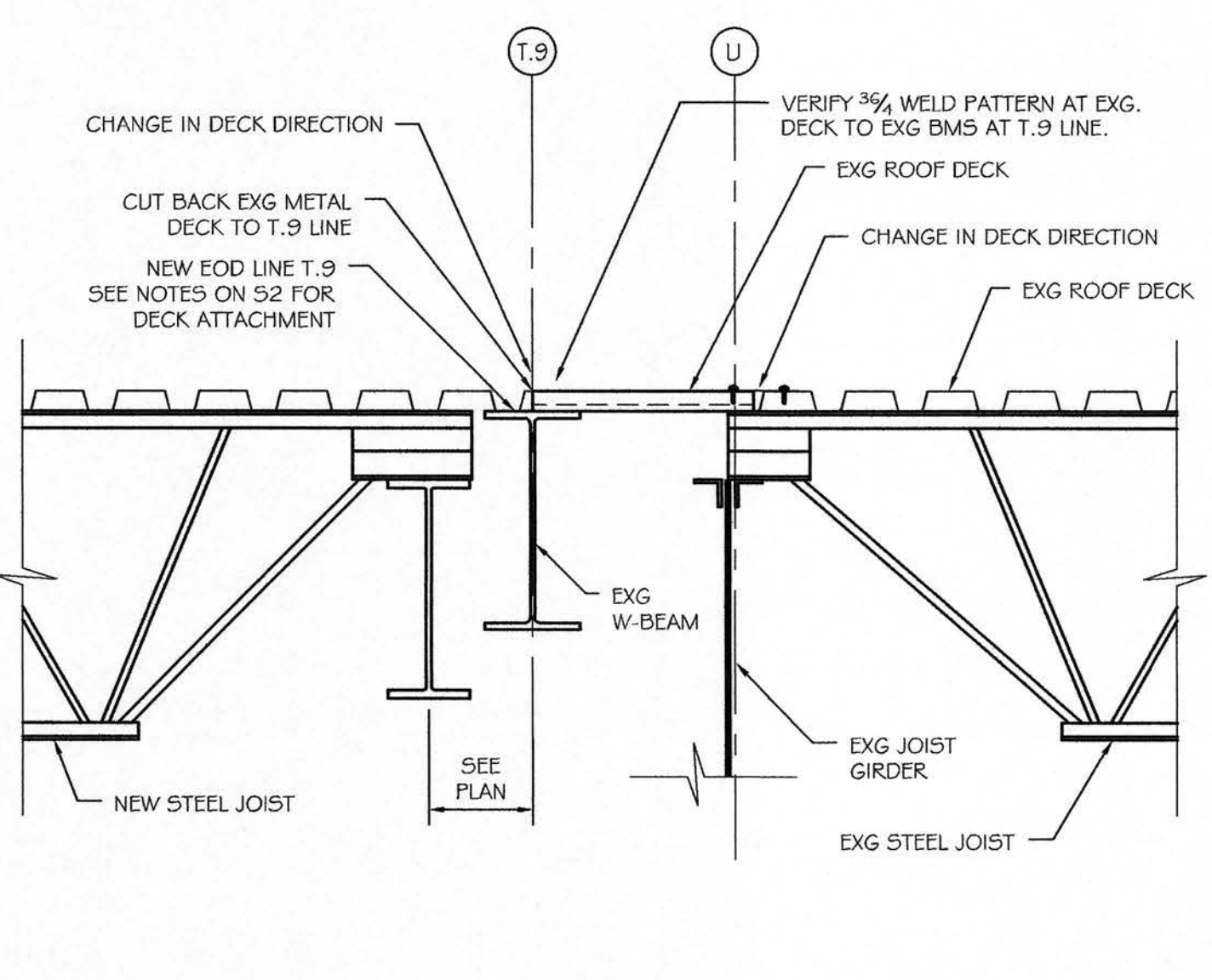
C1 BEAM CONNECTIONS
SCALE: 3/4" = 1'-0"



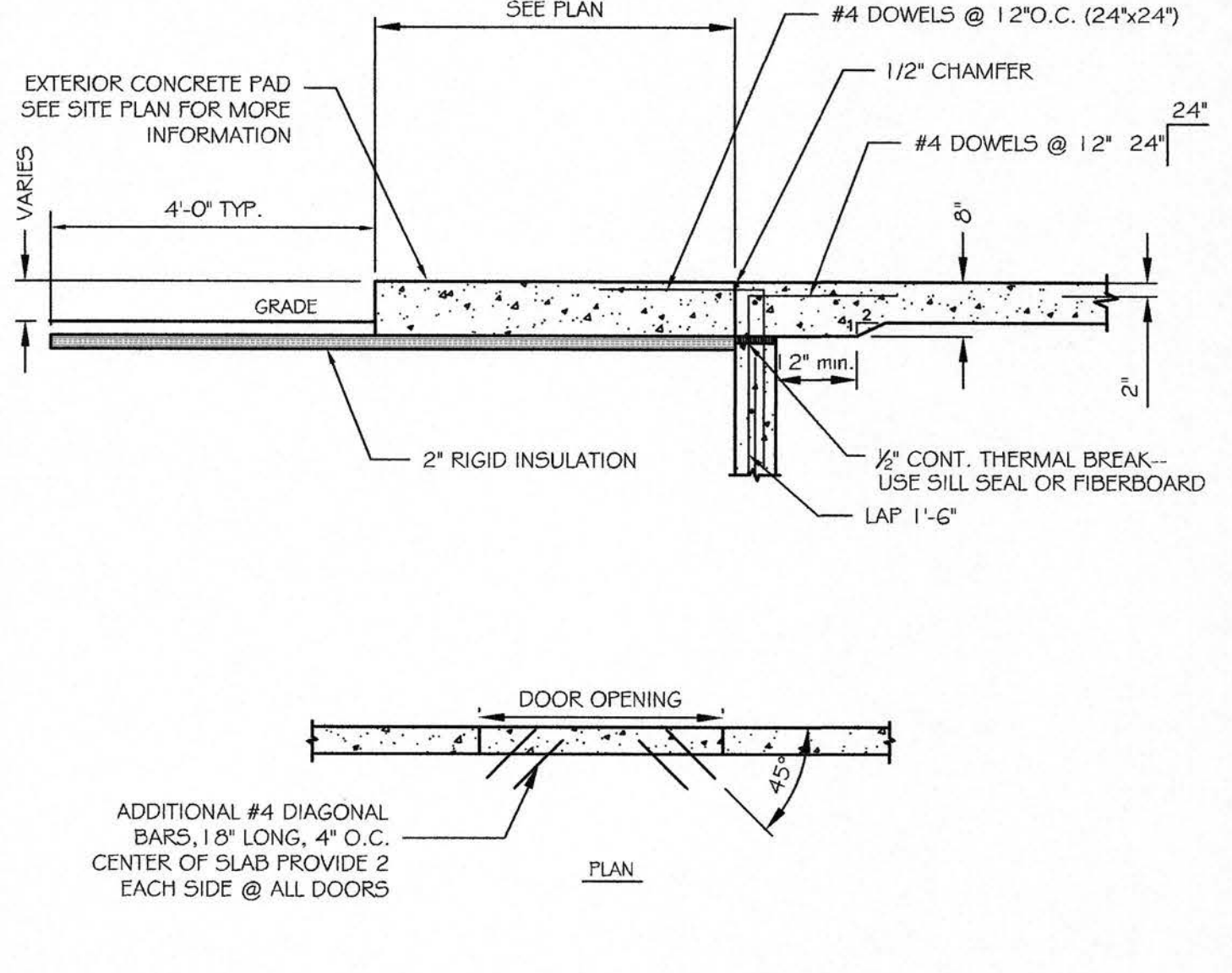
B4 MOMENT CONNECTION
SCALE: 1" = 1'-0"



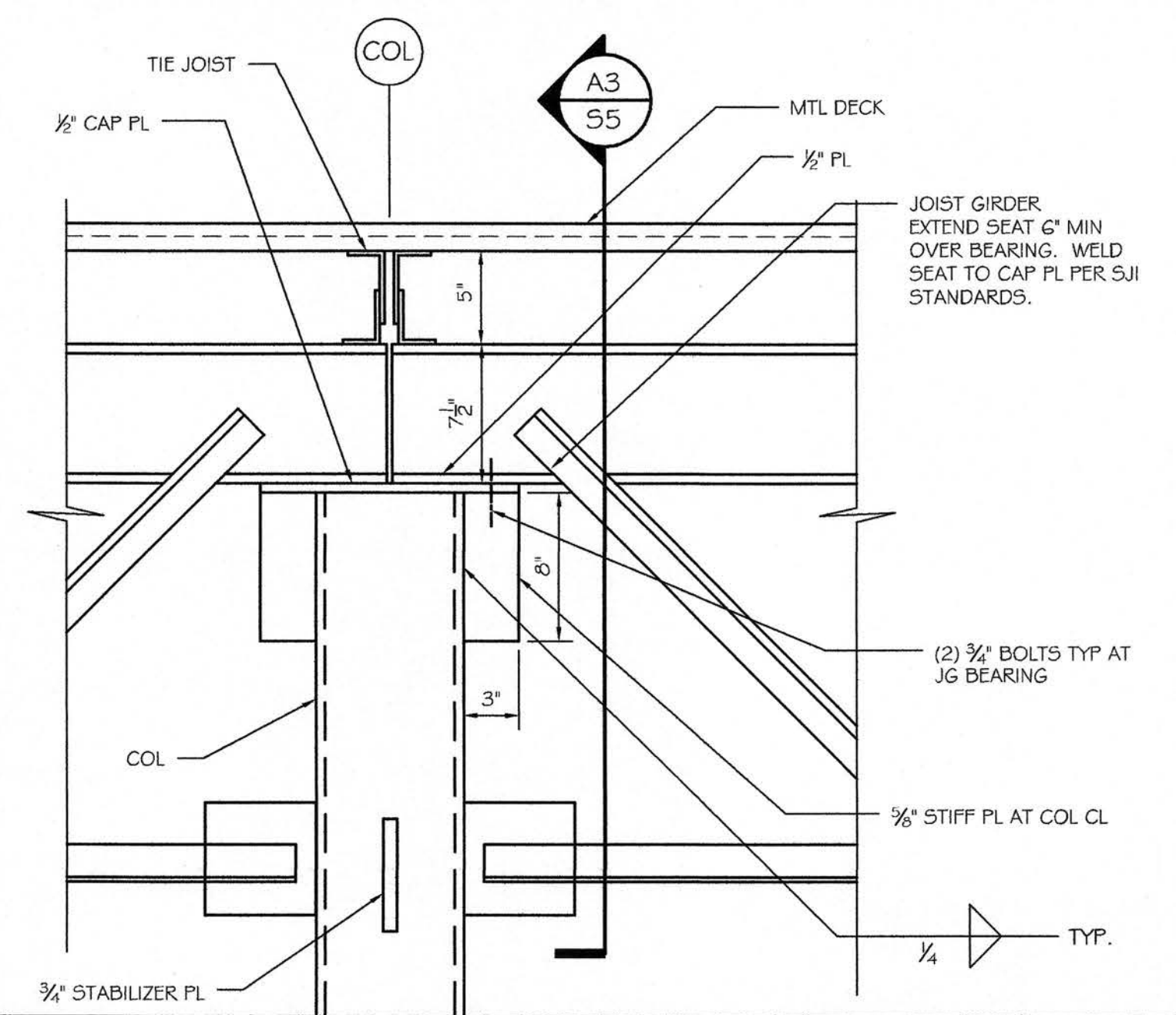
B3 DETAIL
SCALE: 1/2" = 1'-0"



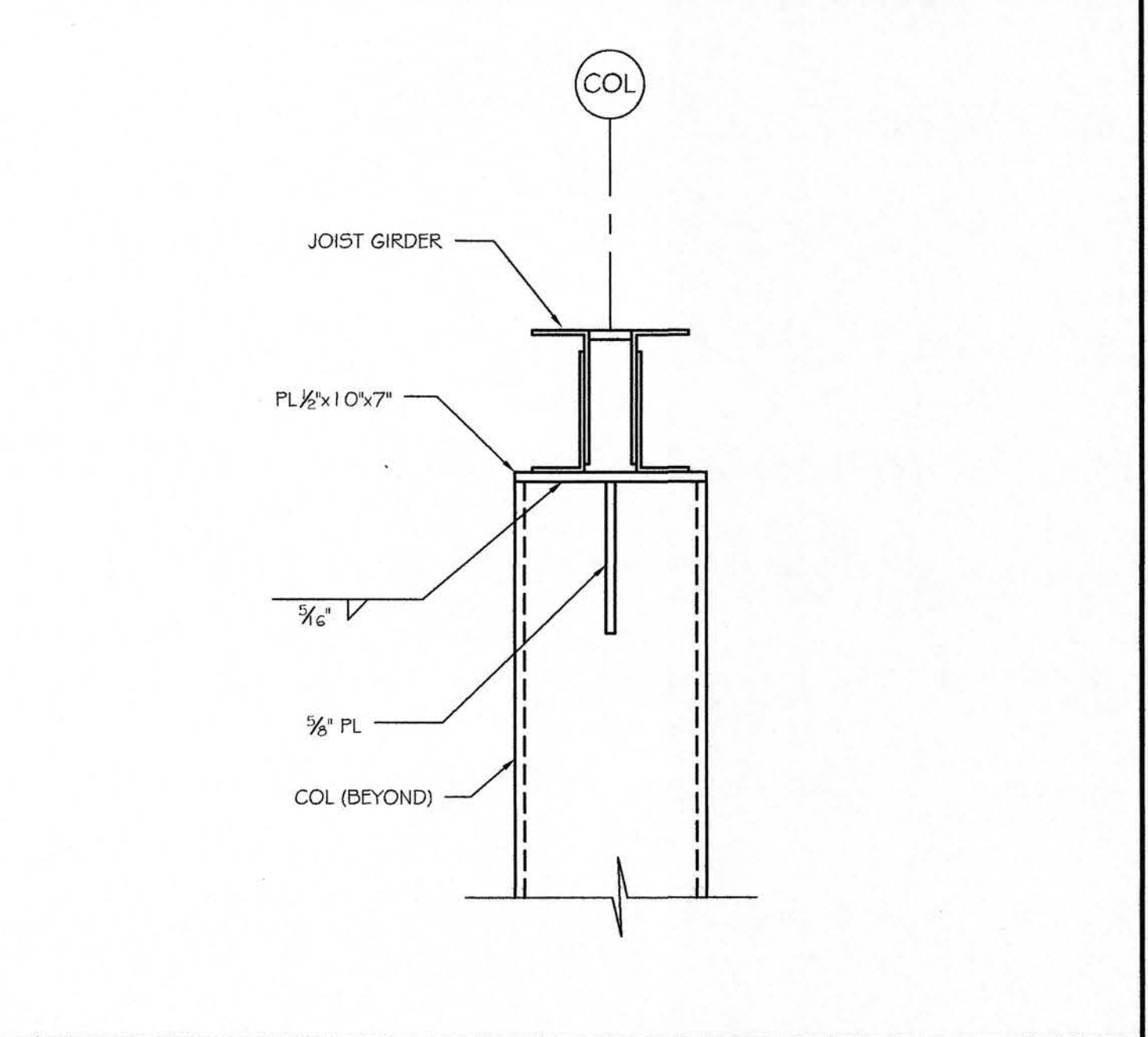
B2 DETAIL
SCALE: 1/2" = 1'-0"



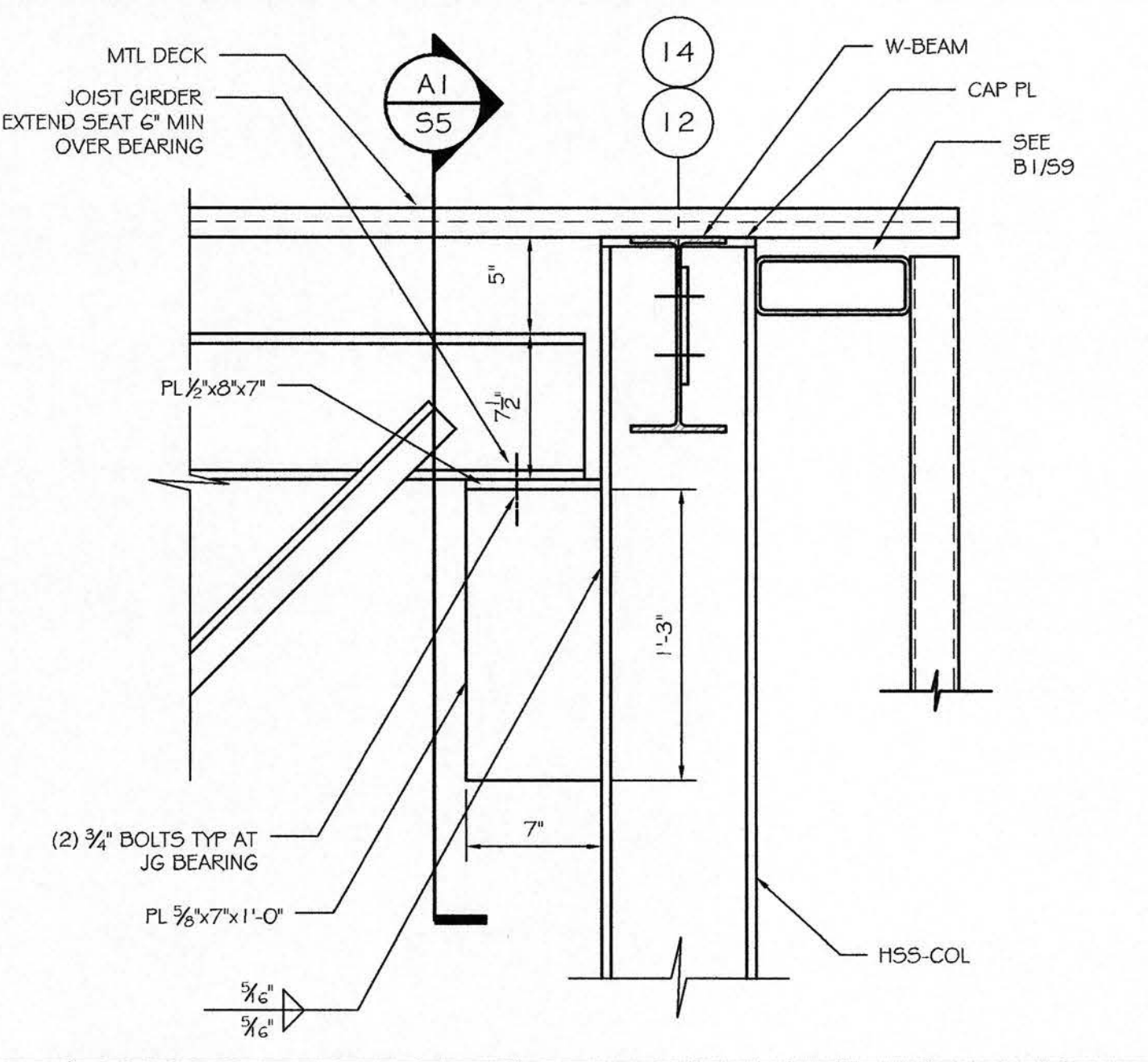
B1 SLAB DETAILS AT DOORS
SCALE: 1/2" = 1'-0"



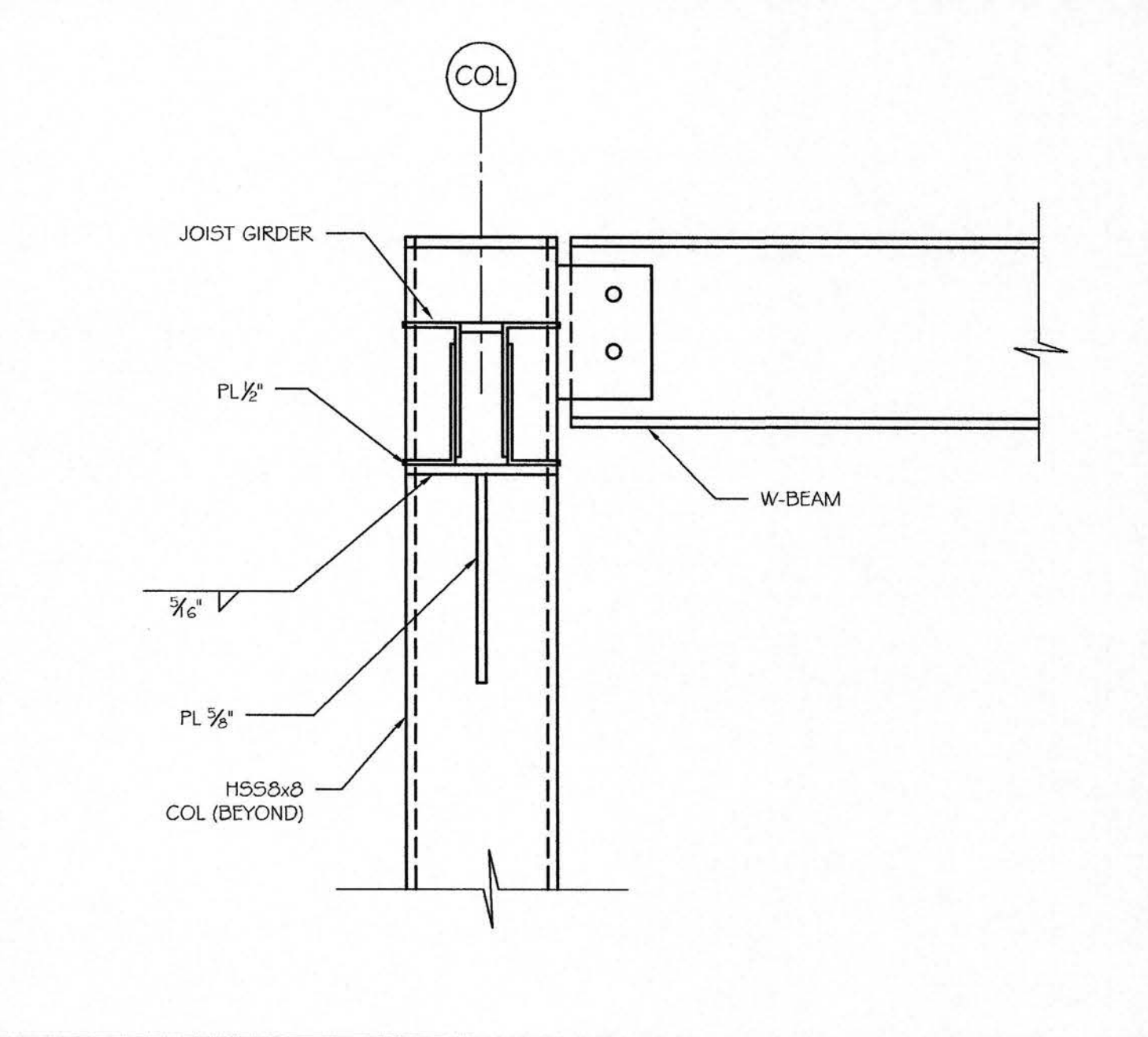
A4 DETAIL
SCALE: NTS



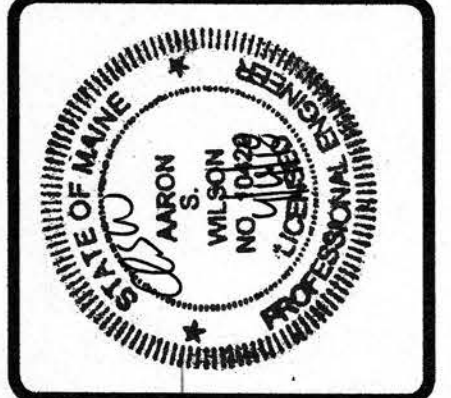
A3 DETAIL
SCALE: NTS



A2 DETAIL
SCALE: NTS



A1 DETAIL
SCALE: 1" = 1'-0"



ASSOCIATED DESIGN PARTNERS INC.
Office: (207) 878-1751
Fax: (207) 878-1788
E-Mail: adp@adpengineering.com
80 Leighton Road
Fairmouth, Maine 04105

THIS DRAWING, DESIGN AND ELECTRONIC FILE ARE THE PROPERTY OF ASSOCIATED DESIGN PARTNERS, INC. THE REPRODUCTION, COPYING OR ANY OTHER USE OF THIS DOCUMENT WITHOUT WRITTEN CONSENT IS PROHIBITED.

PROJECT: **ALLAGASH 2018 PACKAGING EXPANSION**
50 INDUSTRIAL WAY, PORTLAND ME
FOR: ALLAGASH BREWING CO.
SHEET TITLE: **FRAMING DETAILS ISSUED FOR PERMITTING**

REVISIONS	DESCRIPTION	DATE

DATE: 4/4/18
SCALE: AS NOTED
DESIGN BY: RSC
DRAWN BY: RSC
FILE #:
PROJECT NUMBER: **18001**
SHEET NO: **35**