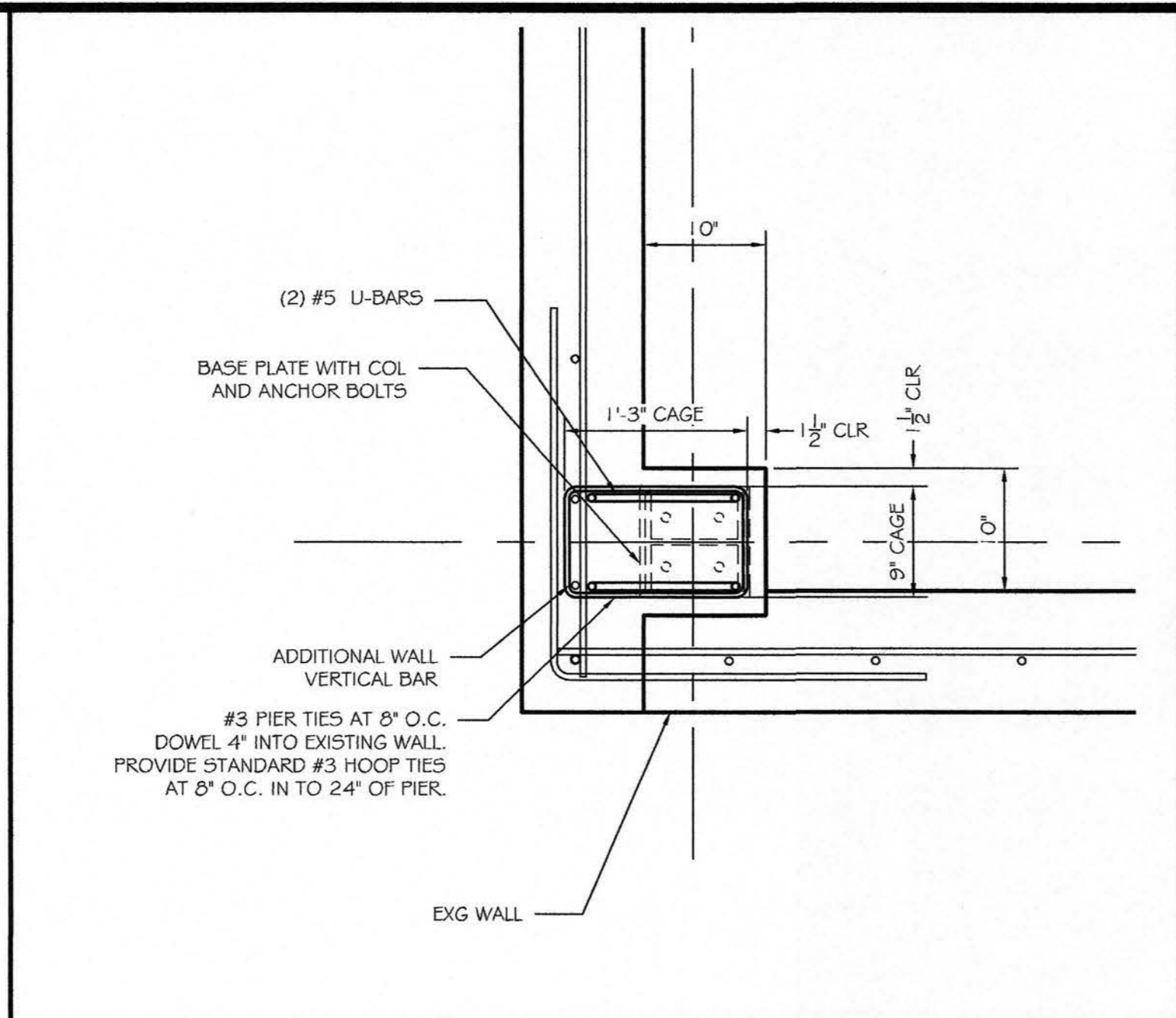
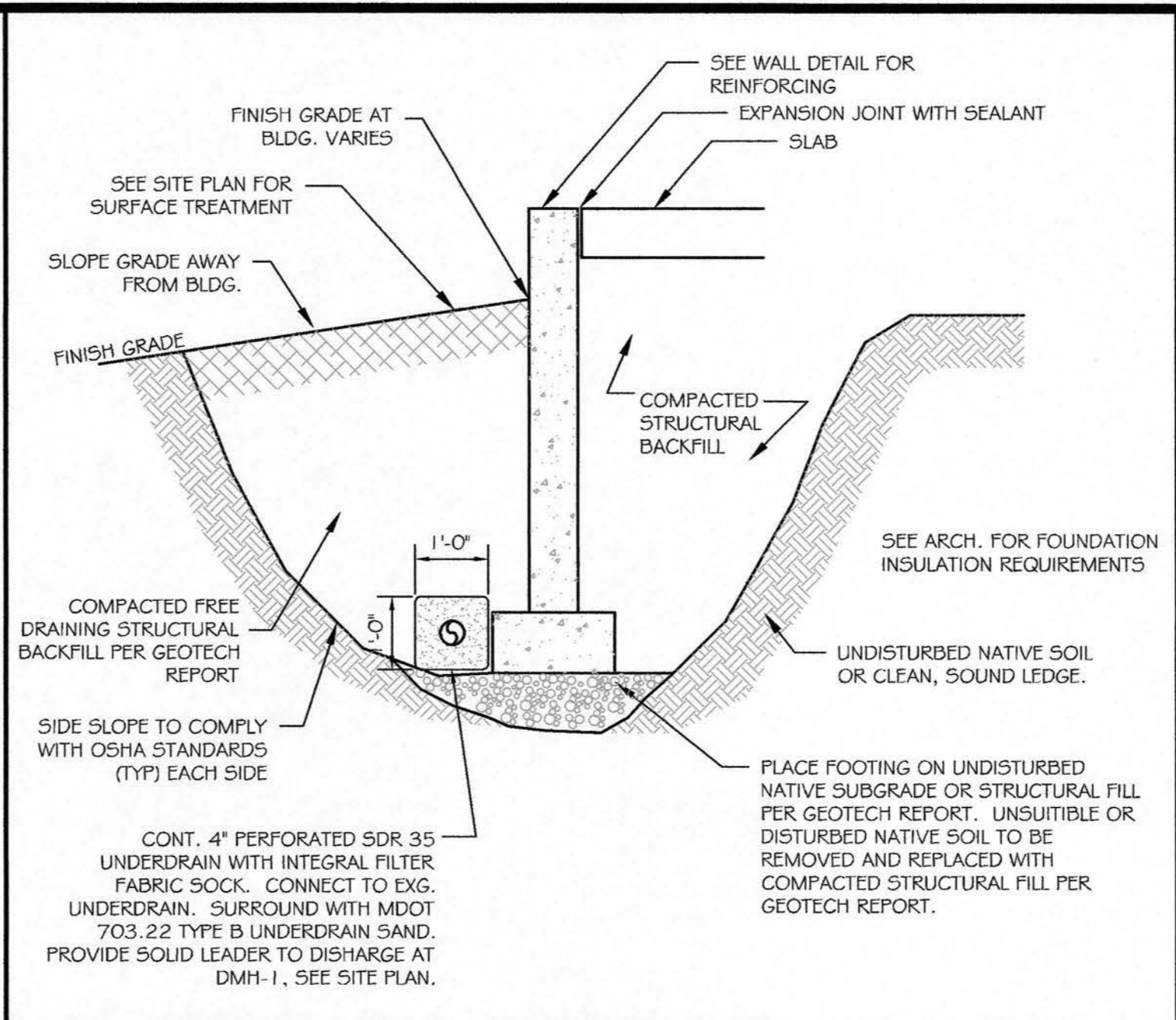


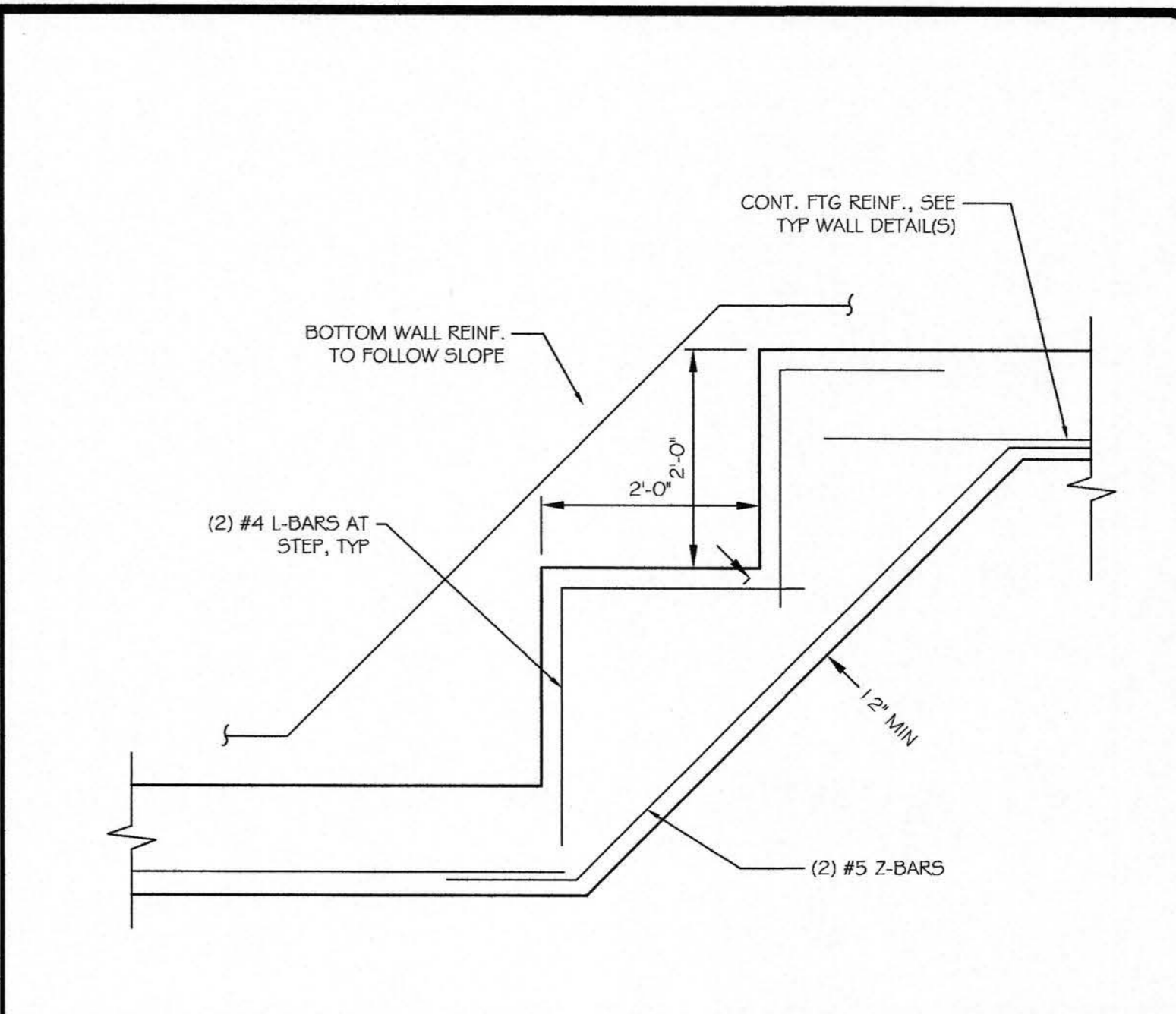
C4 TYPICAL SLAB DETAILS  
SCALE: NO SCALE



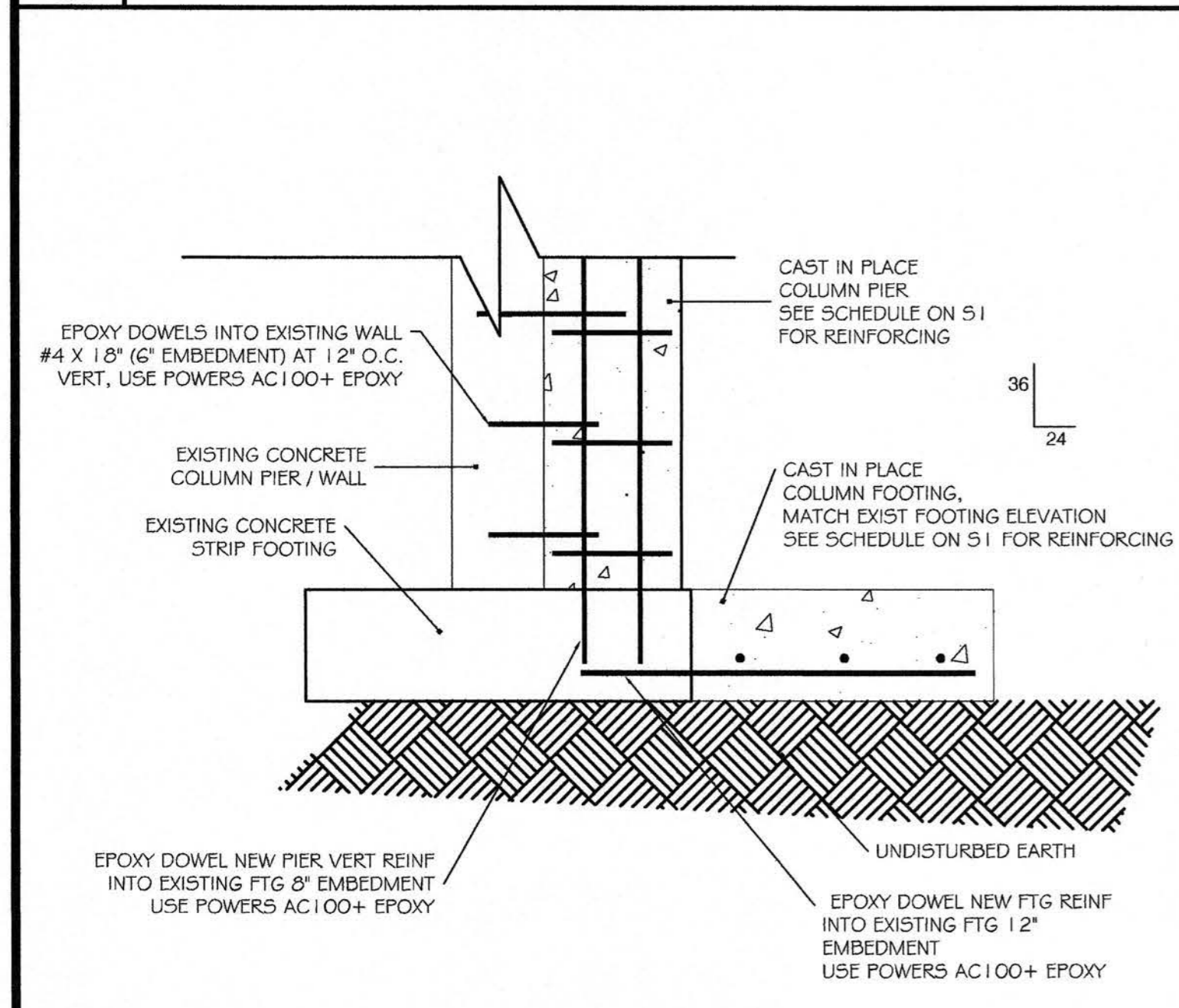
C3 PIER P3 AT CORNER  
SCALE: 1" = 1'-0"



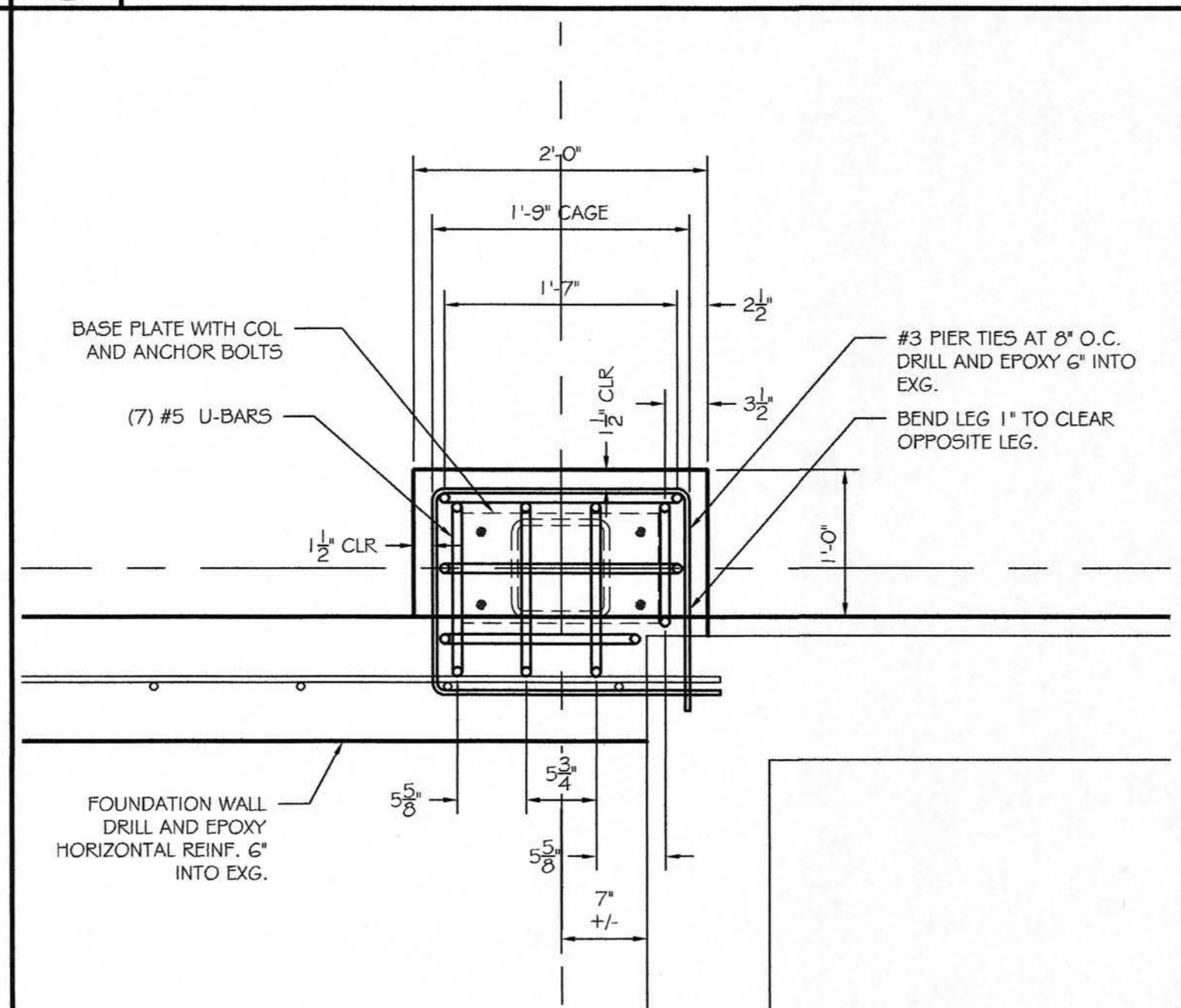
C2 TYPICAL EARTHWORK DETAIL  
SCALE: NO SCALE



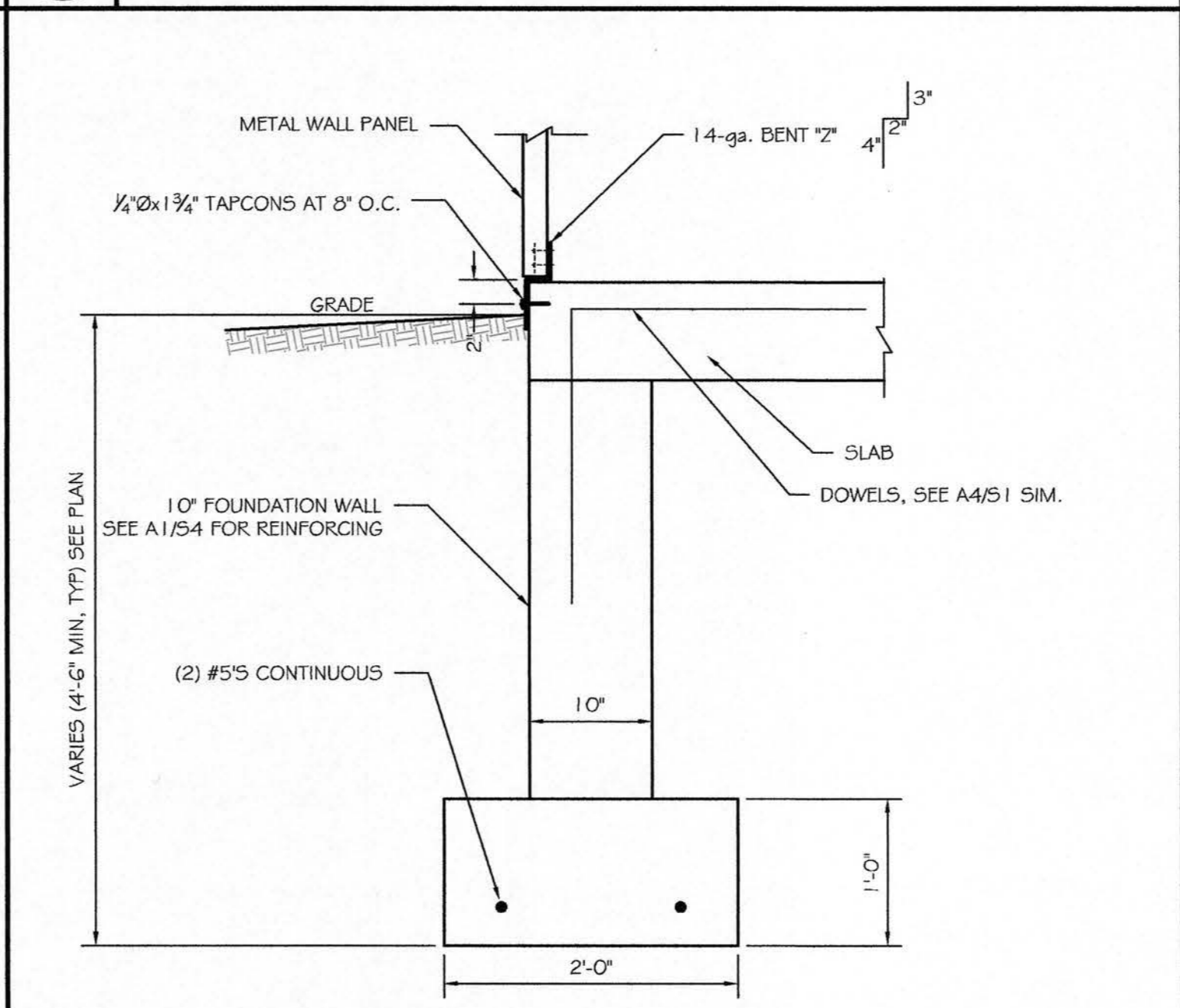
C1 FOOTING STEP DETAIL  
SCALE: NO SCALE



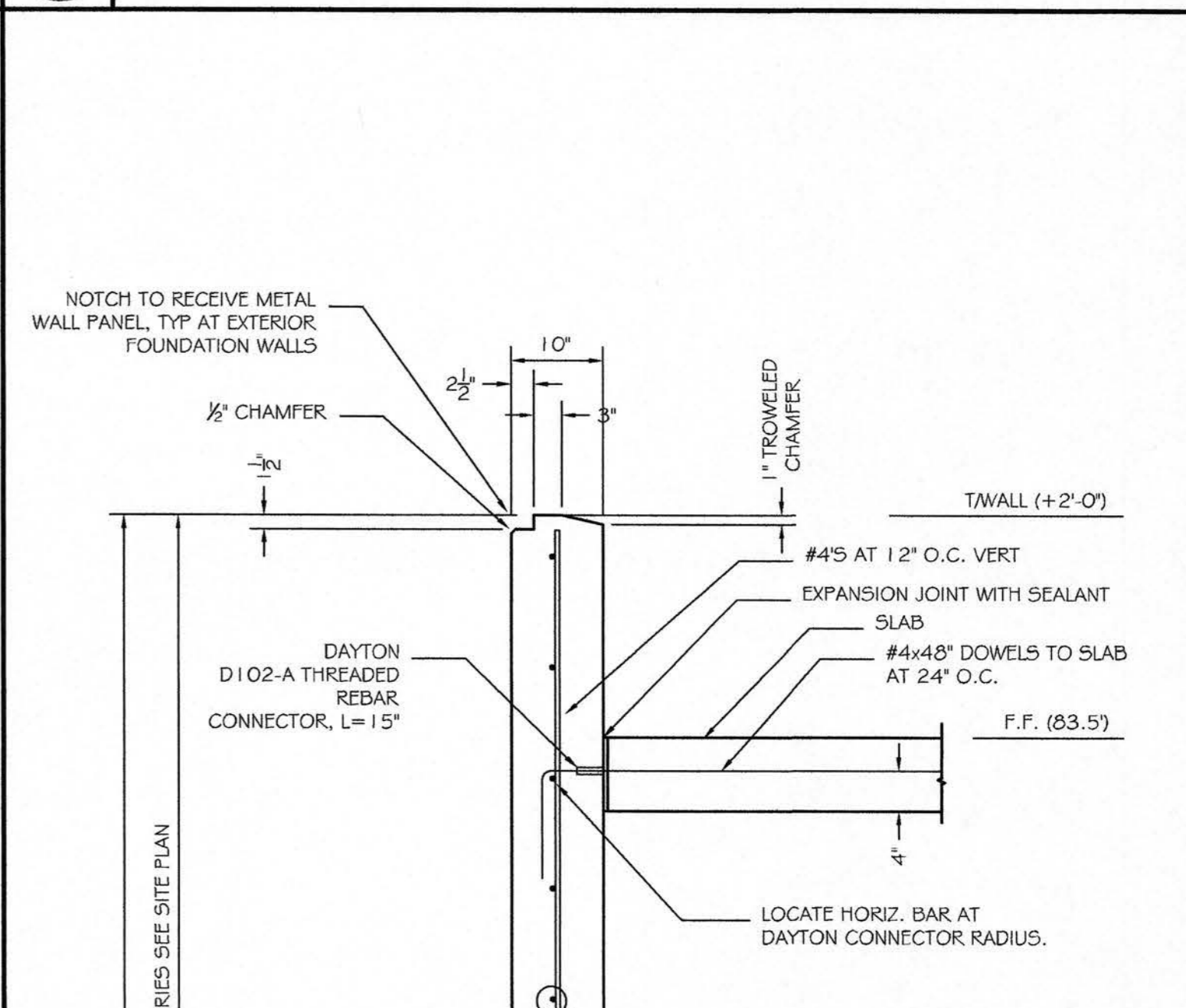
B4 COLUMN AND FOOTING AT EXG. WALL  
SCALE: NO SCALE



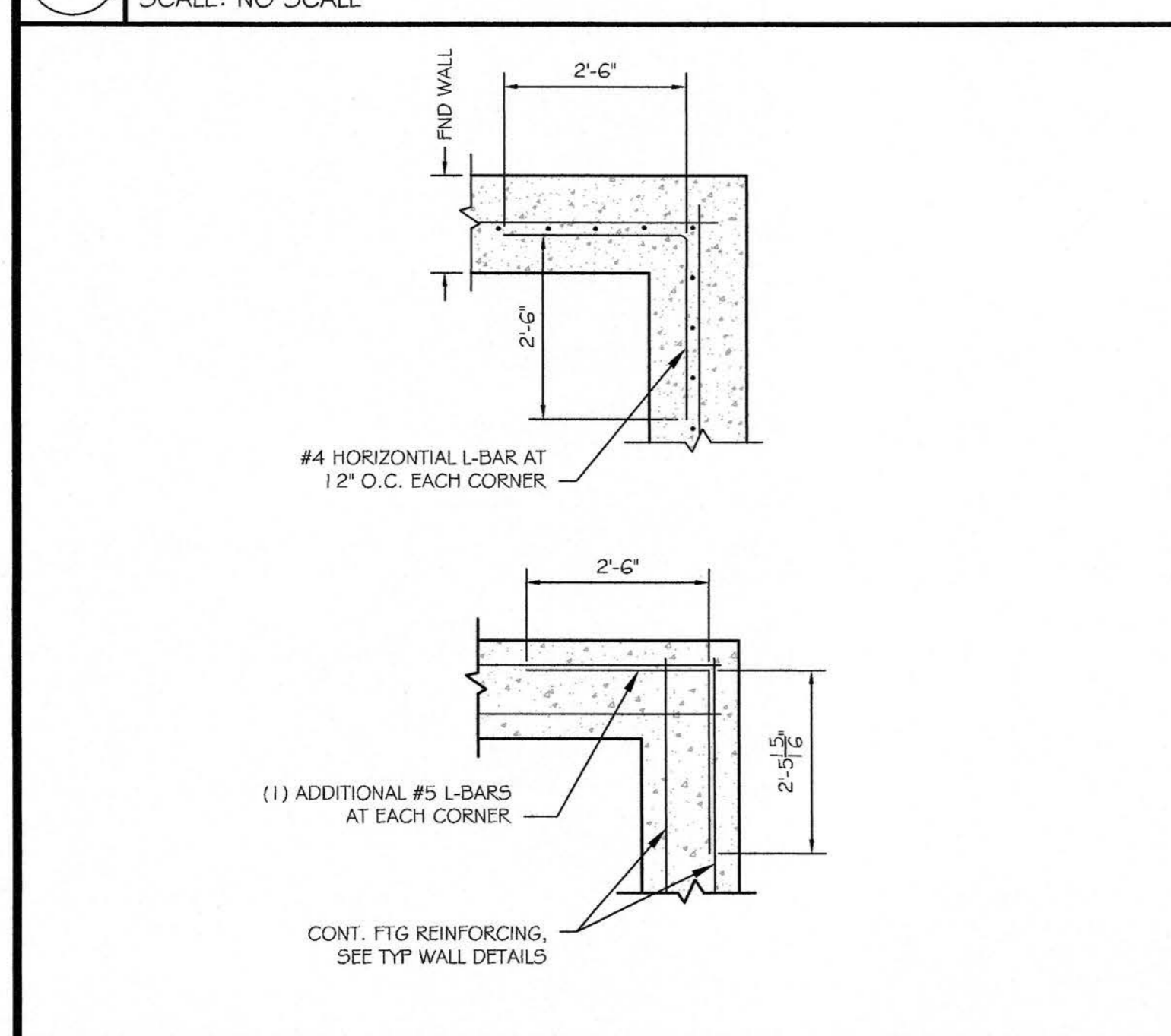
B3 PIER P4  
SCALE: 1" = 1'-0"



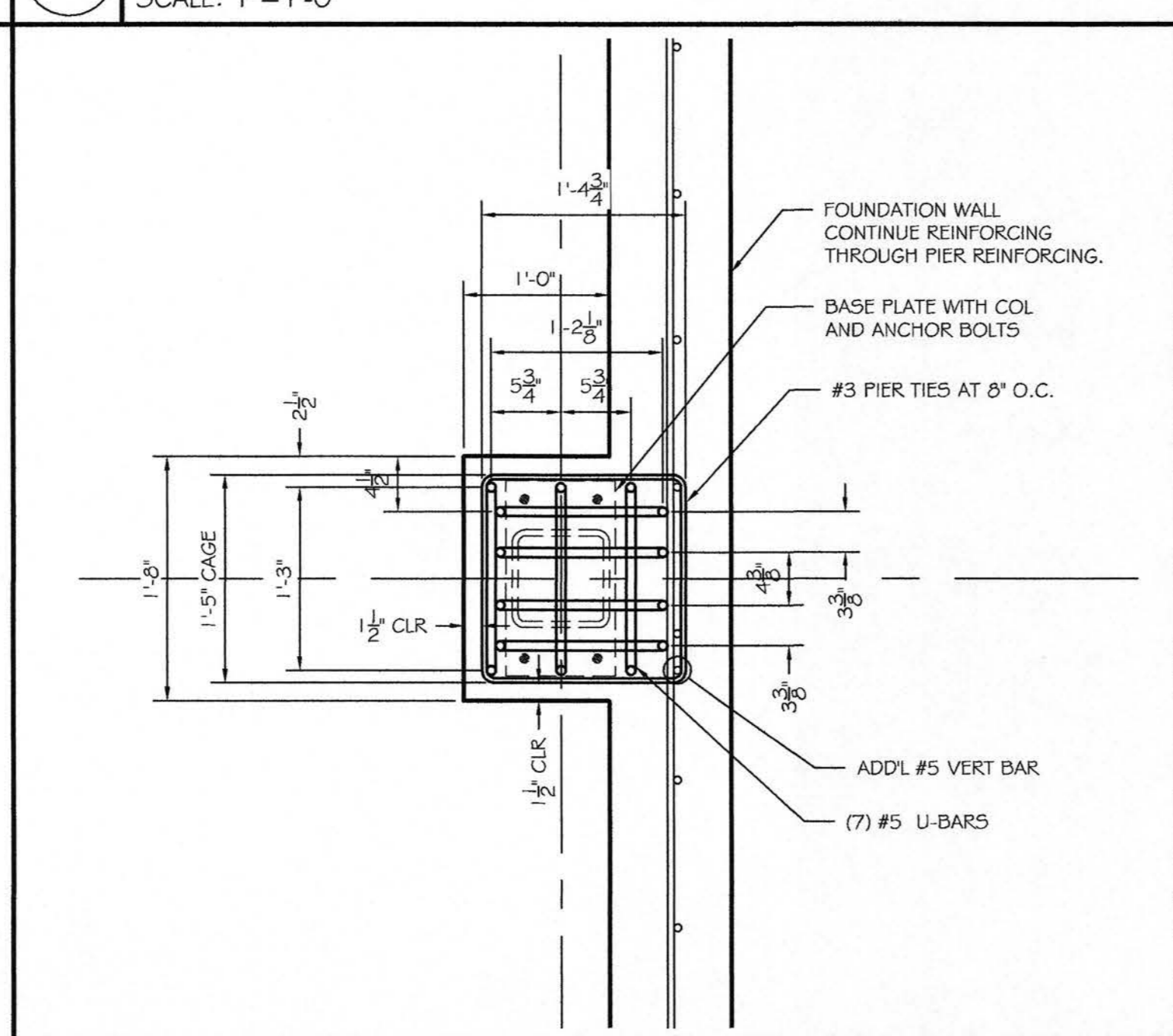
B2 FOUNDATION DETAIL  
SCALE: 1" = 1'-0"



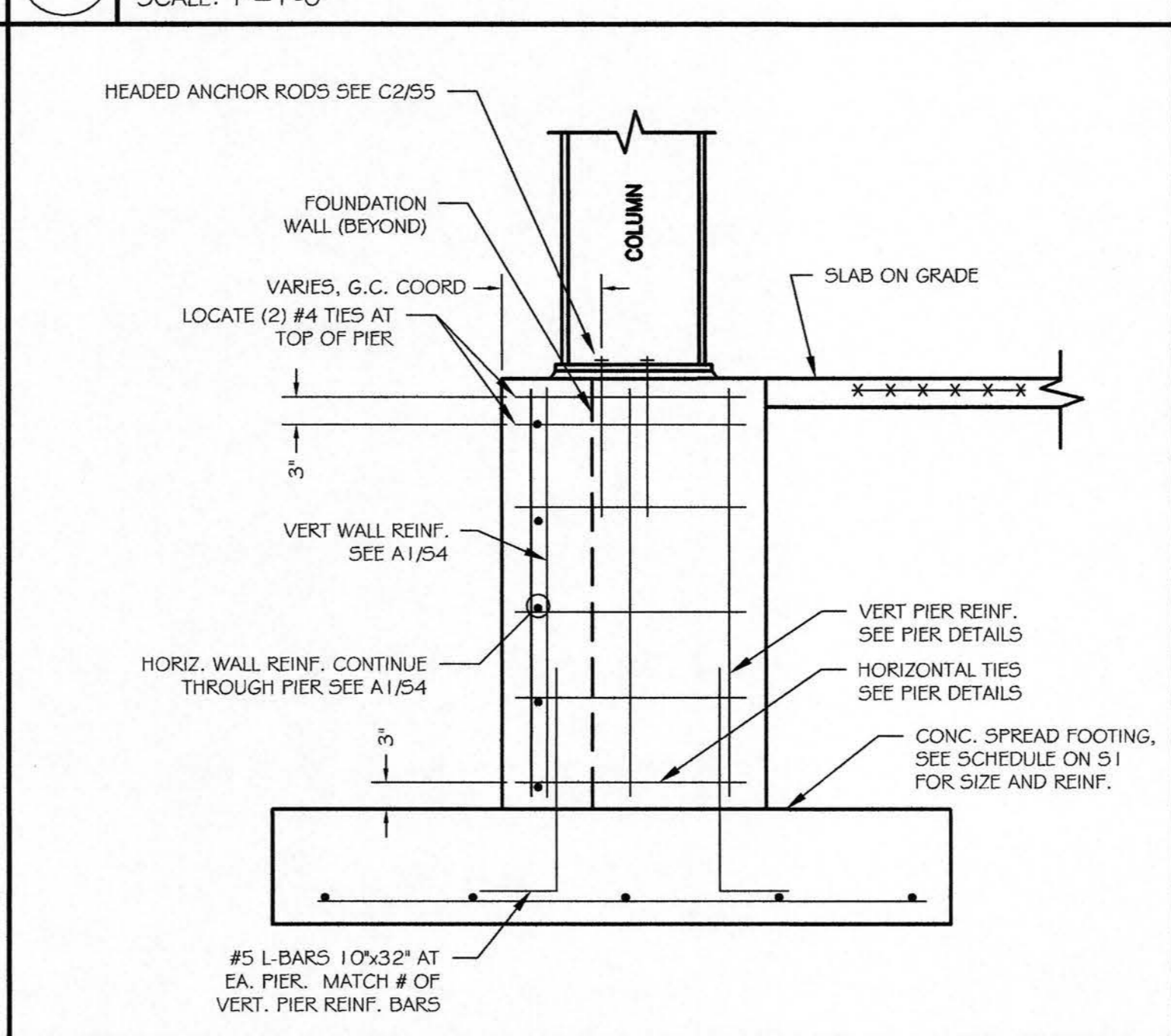
A1 10" FOUNDATION WALL AT TWALL +2'-0"  
SCALE: 3/4" = 1'-0"



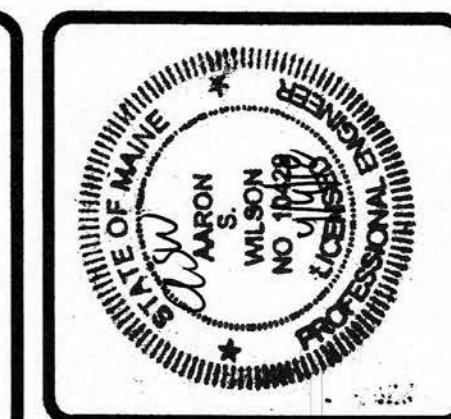
A4 CORNER REINFORCING IN FOOTING AND WALL  
SCALE: NO SCALE



A3 PIER P1  
SCALE: 1/2" = 1'-0"



A2 TYP. PIER / FOOTING SECTION AT EXTERIOR WALL  
SCALE: NO SCALE



**ASSOCIATED DESIGN PARTNERS INC.**  
Office: (207) 878-1751  
Fax: (207) 878-1788  
E-Mail: adp@adpengineering.com  
80 Leighton Road  
Falmouth, Maine 04105

THIS DRAWING, DESIGN AND ELECTRONIC FILE ARE THE PROPERTY OF ASSOCIATED DESIGN PARTNERS, INC. THE REPRODUCTION, COPYING OR ANY OTHER USE OF THIS DOCUMENT WITHOUT WRITTEN CONSENT IS PROHIBITED.

**PROJECT: ALLAGASH 2018 PACKAGING EXPANSION**  
**50 INDUSTRIAL WAY, PORTLAND ME**  
FOR: ALLAGASH BREWING CO.  
**SHEET TITLE: FOUNDATION DETAILS ISSUED FOR PERMITTING**

REVISIONS	DESCRIPTION	DATE
No.	BY	

DATE: 4/4/18  
SCALE: AS NOTED  
DESIGN BY: RSC  
DRAWN BY: ASW  
FILE #:  
PROJECT NUMBER:  
**18001**  
SHEET NO:  
**34**