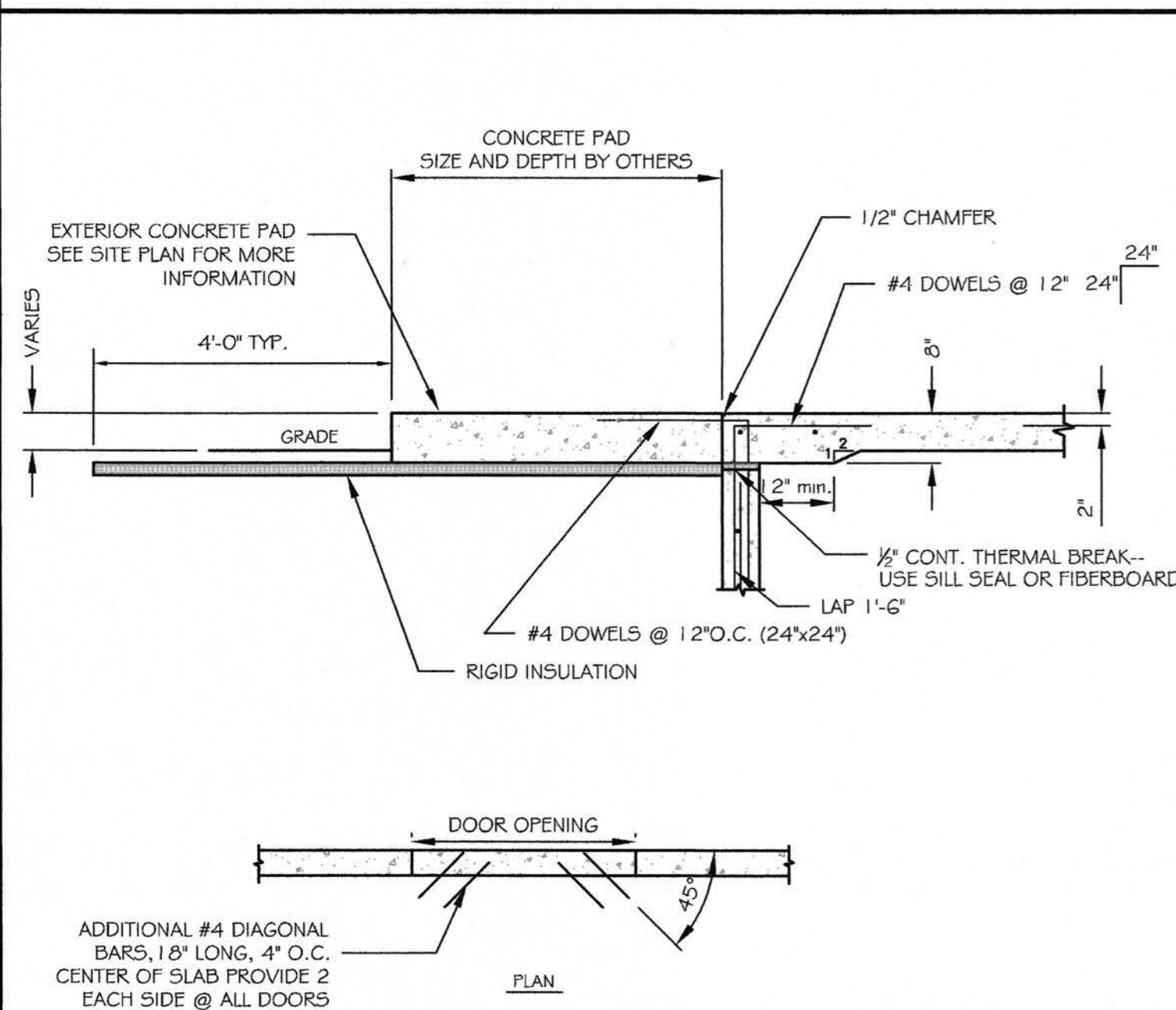


- NOTES:
1. TOP INDICATES TOP OF FOOTING
 2. TOC INDICATES TOP OF CONCRETE
 3. TOP OF CONCRETE AND TOP OF FOOTING ELEVATIONS ARE REFERENCED FROM FINISHED FLOOR ELEVATION = (+83.5) = 0'-0"
 4. UD INDICATES 4" SCHED. 40 PERFORATED PVC UNDERDRAIN (SHOWN SCHEMATICALLY)
- COORDINATE WITH SITE PLAN.
5. F.F. INDICATES FINISHED FLOOR
 6. ADP, INC. RECOMMENDS CLEANOUTS AT EVERY OTHER CORNER OF FOUNDATION UNDERDRAIN.
 7. SEE S10 FOR GENERAL NOTES & SPECIFICATIONS
 8. FOOTINGS ARE CENTERED ON COLUMN GRIDS, UNO.
 9. SEE DETAIL SHEET S4 FOR PIER REINFORCING.
 10. G.C. VERIFY REQUIRED WIDTH OF ALL FOUNDATION WALL BOND-OUTS FOR DOOR OPENINGS PRIOR TO CONSTRUCTION.
 11. PROVIDE (2) 1/2" A307 ANCHOR BOLTS EA. SIDE OF FRAMED OPENINGS THROUGH EXTERIOR BUILDING WALLS. SEE DETAIL B2/S6 AND C1/S9.
 12. CONTRACTOR VERIFY ALL DIMENSIONS NOTED (+/-).
 13. INSTALL KAGETECH FLOORING BETWEEN AT SLAB AREAS WHERE T/SLAB IS RECESSED 3/4". SLAB FLATNESS (VERTICAL DISTANCE BETWEEN HIGH/LOW POINTS) TOLERANCE NO MORE THAN 1/8" IN 10 LINEAL FEET. COORDINATE WITH TILE MANUFACTURER (KAGETECH) REQUIREMENTS.
 14. COORDINATE FLOOR DRAIN LOCATIONS WITH ARCH AND MEP.
 15. SLAB SLOPES INDICATED ARE MINIMUM SLOPES.
 16. RIGID INSULATION BENEATH INSULATED SLABS TO EXTEND MIN 48" BEYOND EXTERIOR SLAB EDGES, TYP

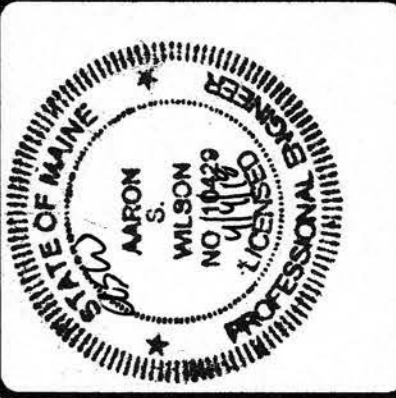
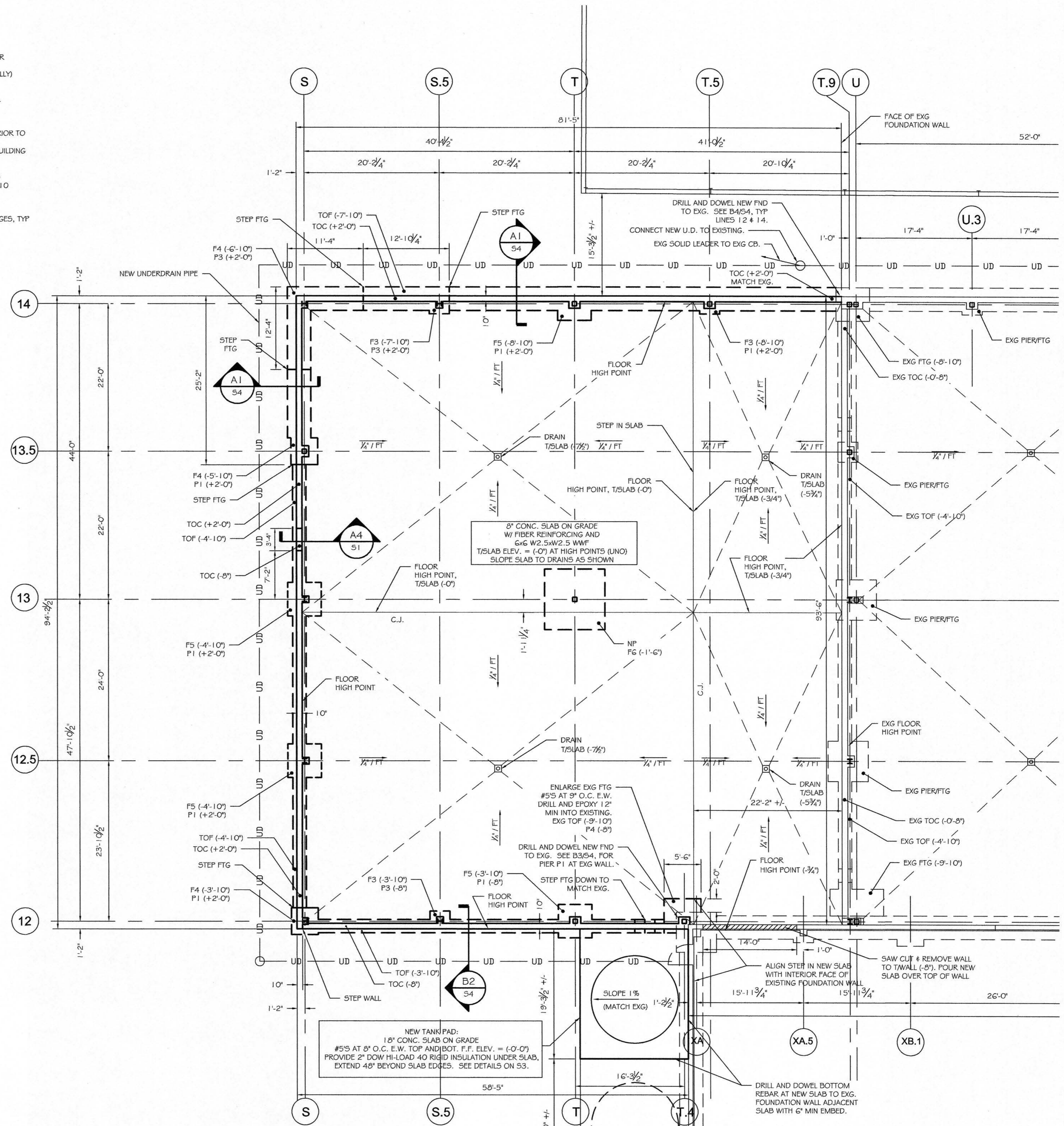
PIER SCHEDULE		
MARK	SIZE	REINFORCING
P1	12"x20"	SEE A3/S4
P3	10"x10"	SIF C3/S4
P4	12"x24"	SEE B3/S4

FOOTING SCHEDULE		
MARK	SIZE	BOTTOM REINFORCING
F3	3'-0"x3'-0"x12"	(4) #5'S E.W.
F59	5'-0"x9'-0"x12"	#6'S AT 16" O.C. E.W. TOP AND BOT
F4	4'-0"x4'-0"x12"	(5) #5'S E.W.
F5	5'-0"x5'-0"x12"	(6) #5'S E.W.
F6	6'-0"x6'-0"x1'-4"	(6) #6'S E.W.
F7	7'-0"x7'-0"x1'-4"	(7) #6'S E.W.
F8	8'-0"x8'-0"x1'-4"	(8) #6'S E.W.
F8A	8'-0"x8'-0"x1'-4"	(7) #6'S E.W. TOP AND BOT
F9	9'-0"x9'-0"x1'-4"	(10) #6'S E.W.
F13-B	13'-0"x8'-0"x1'-4"	#6'S AT 8" O.C. E.W. TOP AND BOT
F9-15	9'-0"x15'-0"x1'-4"	#6'S AT 8" O.C. E.W. TOP AND BOT



A4 SLAB AT EXTERIOR DOORS
SCALE: NO SCALE

A3 FOUNDATION PLAN
SCALE: 1/8" = 1'-0"



ASSOCIATED DESIGN PARTNERS INC.
Office: (207) 878-1751
Fax: (207) 878-1788
E-Mail: adp@adpengineering.com
80 Leighton Road
Fairmouth, Maine 04105

THIS DRAWING, DESIGN AND ELECTRONIC FILE ARE THE PROPERTY OF ASSOCIATED DESIGN PARTNERS, INC. THE REPRODUCTION, COPYING OR ANY OTHER USE OF THIS DOCUMENT WITHOUT WRITTEN CONSENT IS PROHIBITED.

PROJECT: **ALLGASH 2018 PACKAGING EXPANSION**
50 INDUSTRIAL WAY, PORTLAND ME
SHEET TITLE: **FOUNDATION PLAN**
ISSUED FOR PERMITTING

REVISIONS	DESCRIPTION	DATE
No.	BY	DATE

DATE: 4/4/18
SCALE: AS NOTED
DESIGN BY: ASW
DRAWN BY: ASW
PROJECT NUMBER: **18001**
SHEET NO: **S1**