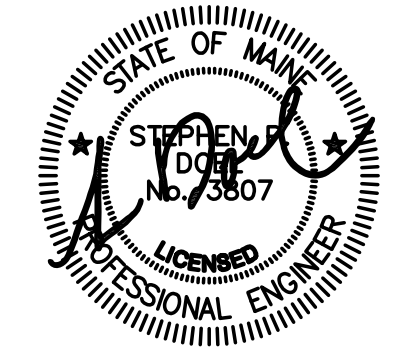


GRANT HAYS
ASSOCIATES

ARCHITECTURE & INTERIOR DESIGN
P.O. BOX 6179 FALMOUTH MAINE 04105
207.871.5900 www.granthays.com

SCALE



REV./NO./BY

DRAWING NAME

2018 PACKAGING ADDITION
ALLAGASH
BREWING COMPANY
50 INDUSTRIAL WAY
PORTLAND, MAINE 04105
PROJECT# 18-005

SHEET

NEW PACKAGING
ADDITION
FLOOR PLAN

DATE
4 APRIL 2018

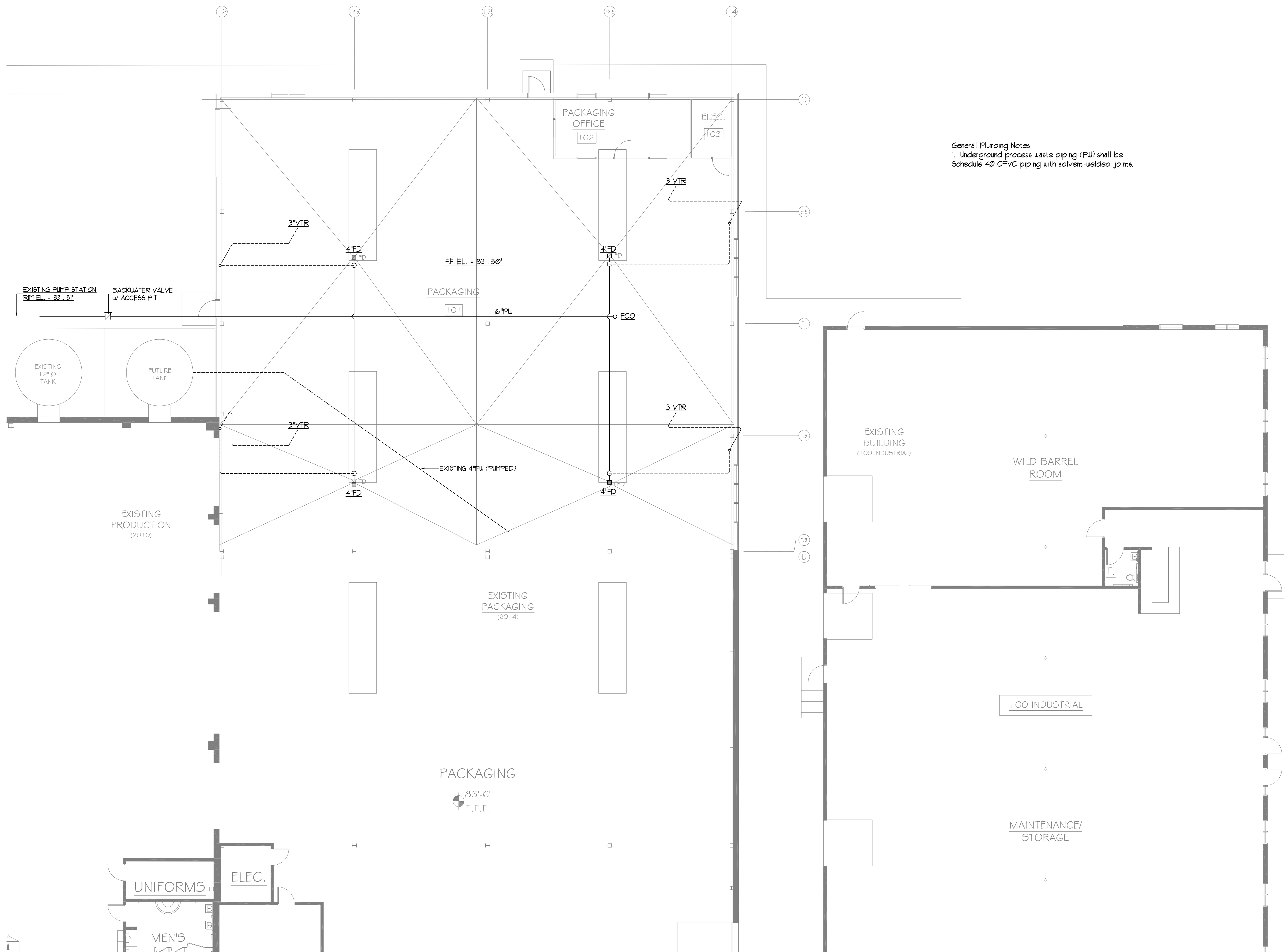
SCALE
1/8"=1'-0"

DRAWN
JP Doel

JOB NO.
180112

SHEET
P-1

COPYRIGHT
REPRODUCTION OR REVISE OF THIS
DOCUMENT WITHOUT WRITTEN
PERMISSION FROM GRANT HAYS/
ASSOCIATES IS PROHIBITED.



General Plumbing Notes
1. Underground process waste piping (PW) shall be Schedule 40 CPVC piping with solvent-welded joints.

INDUSTRIAL WAY