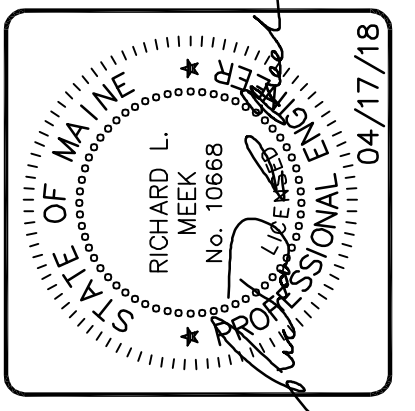
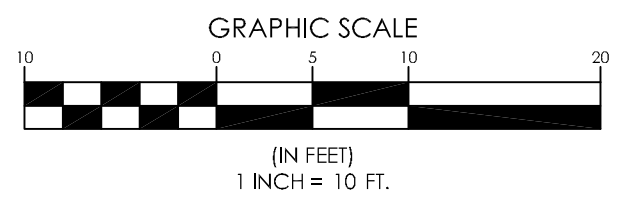


LEGEND

EXISTING	PROPOSED
	PROPERTY LINE/R.O.W.
	ABUTTER LINE/R.O.W.
	BUILDING
	EDGE WETLAND
	WETLANDS
	EDGE PAVEMENT
	PAVEMENT SAWCUT
	EDGE GRAVEL
	TREELINE
	CONTOURS
	SPOT GRADE
	SANITARY SEWER
	SANITARY MANHOLE
	STORM DRAIN
	UNDER DRAIN
	DRAINAGE MANHOLE
	CATCH BASIN
	RIPRAP
	FILTER BARRIER



DESIGNED	CHECKED
RLM	RLM

B RLM 04/17/18 SUBMIT LEVEL II SITE PLAN APPLICATION TO CITY
 A RLM 03/16/18 ISSUED FOR CLIENT REVIEW
 REV. BY: DATE: STATUS:
 THIS PLAN SHALL NOT BE MODIFIED WITHOUT WRITTEN PERMISSION FROM SEBAGO TECHNICS, INC. ANY ALTERATIONS AUTHORIZED OR OTHERWISE, SHALL BE AT THE USER'S SOLE RISK AND WITHOUT LIABILITY TO SEBAGO TECHNICS, INC.

SEBAGO
 TECHNICS
 WWW.SEBAGOTECHNICS.COM
 75 John Roberts Rd.
 Suite 401 AE 04106
 South Portland, ME
 Tel. 207-200-2100

GRADING AND UTILITY PLAN
 OF:
2018 PACKAGING EXPANSION
 ALLAGASH BREWING COMPANY 50 INDUSTRIAL WAY
 PORTLAND, MAINE
 FOR:
50 INDUSTRIAL WAY, LLC
 50 INDUSTRIAL WAY
 PORTLAND, MAINE 04103

PROJECT NO. SCALE
 02249 1" = 10'

SHEET C.4

02249.dwg, TAB 50