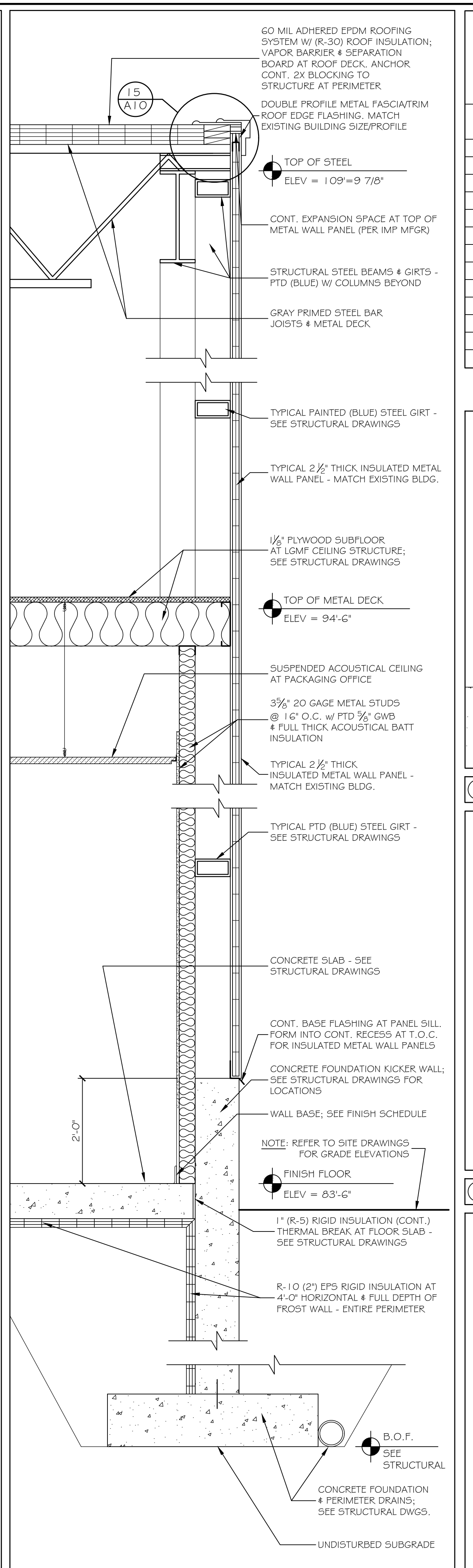


① TYPICAL WALL SECTION AT FULL HEIGHT IMP 3/4" = 1'-0"



② TYPICAL WALL SECTION AT FOUNDATION KICKER 3/4" = 1'-0"

FINISH SCHEDULE

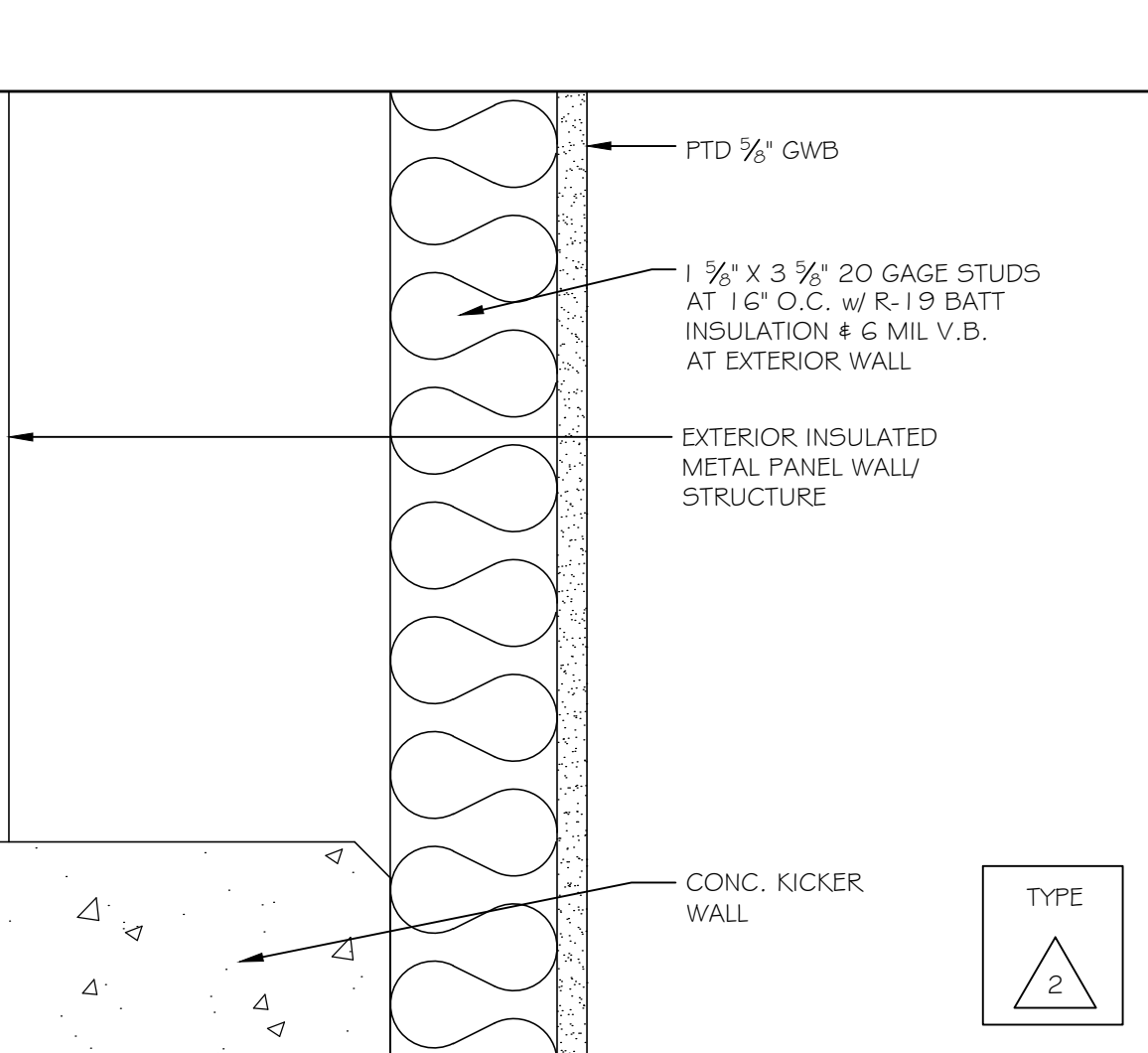
NO.	NAME	WALLS				FLOOR				CLG A		CLG B		REMARKS
		N	E	S	W	MATL	BASE	MATL	BASE	TYPE	HT	TYPE	HT	
101	PACKAGING	PSIMP	PSIMP	PSIMP	P-GWB PS-IMP	TILE *	TILE *	CH	C	-	-	-	-	* SEE A2 FOR TILE LOCATIONS
102	PACKAGING OFFICE	P-GWB	P-GWB	P-GWB	P-GWB	VINYL	VB	-	-	SAT	8'-0"	-	-	
103	ELECTRICAL	P-GWB *	P-GWB *	P-GWB *	P-GWB *	CH	VB	-	-	-	-	-	-	* SEE ELECT. DWGS. FOR BACKERS

ABBREVIATIONS

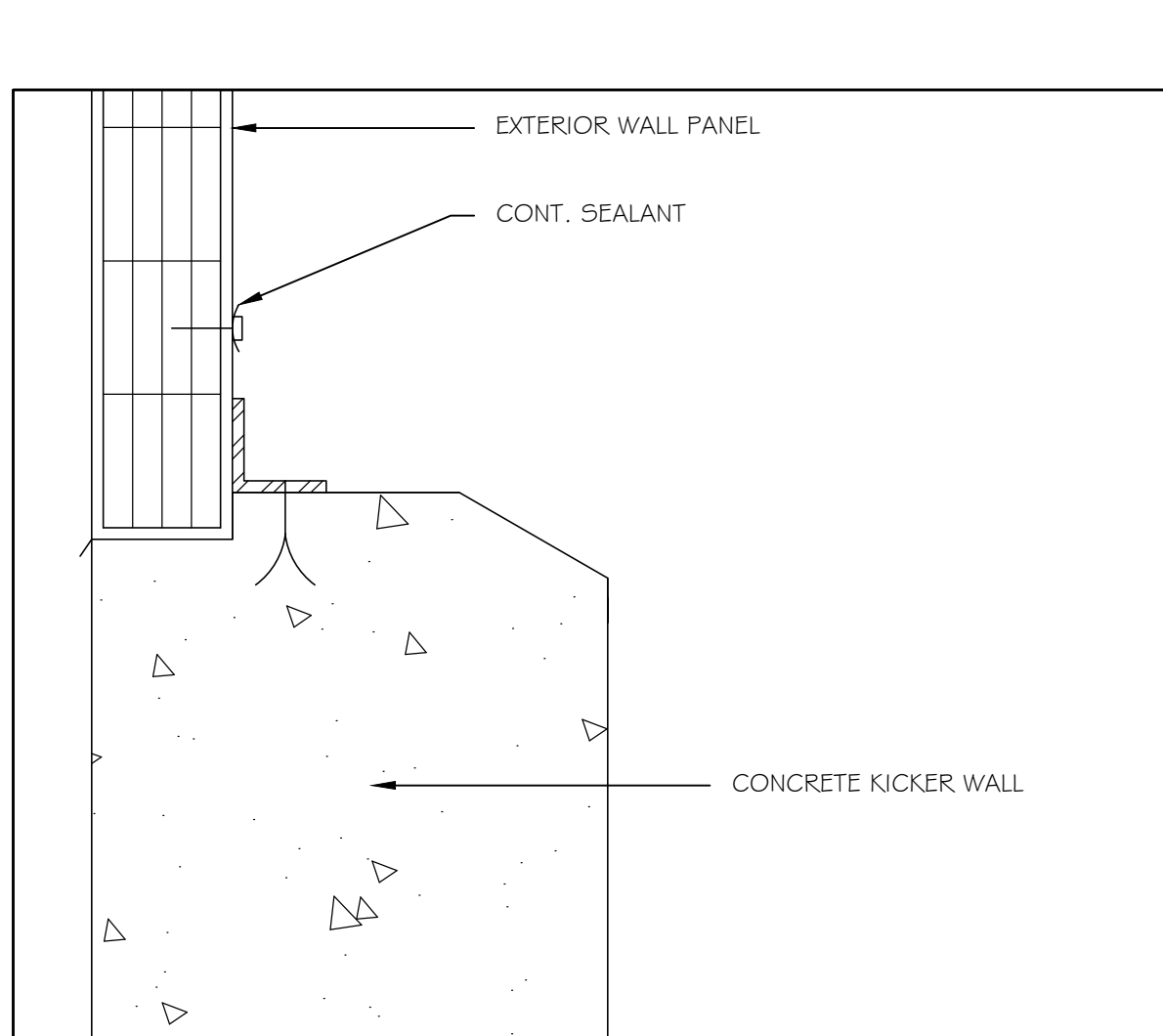
C	CARPET	FV	FIELD VERIFY	RCB	RUBBER COVE BASE
CH	CONCRETE W/ HARDENER	GL	GLASS	QT	QUARRY TILE
CMU	CONCRETE MASONRY UNIT	GWB	GYPSUM WALL BOARD	SS	STAINLESS STEEL
CT	CERAMIC TILE	IMP	INSUL METAL PANEL	VB	VINYL BASE
E	EXISTING	P	PAINT	VCT	VINYL COMPOSITION TILE
EP	EPOXY PAINT	PS	PAINT STRUCTURE	WCI	WALL COVERING (TYPE)
FR	FIBERGLASS REINFORCED PANELS	OP	OPERABLE PARTITION	WD	WOOD

NOTES:

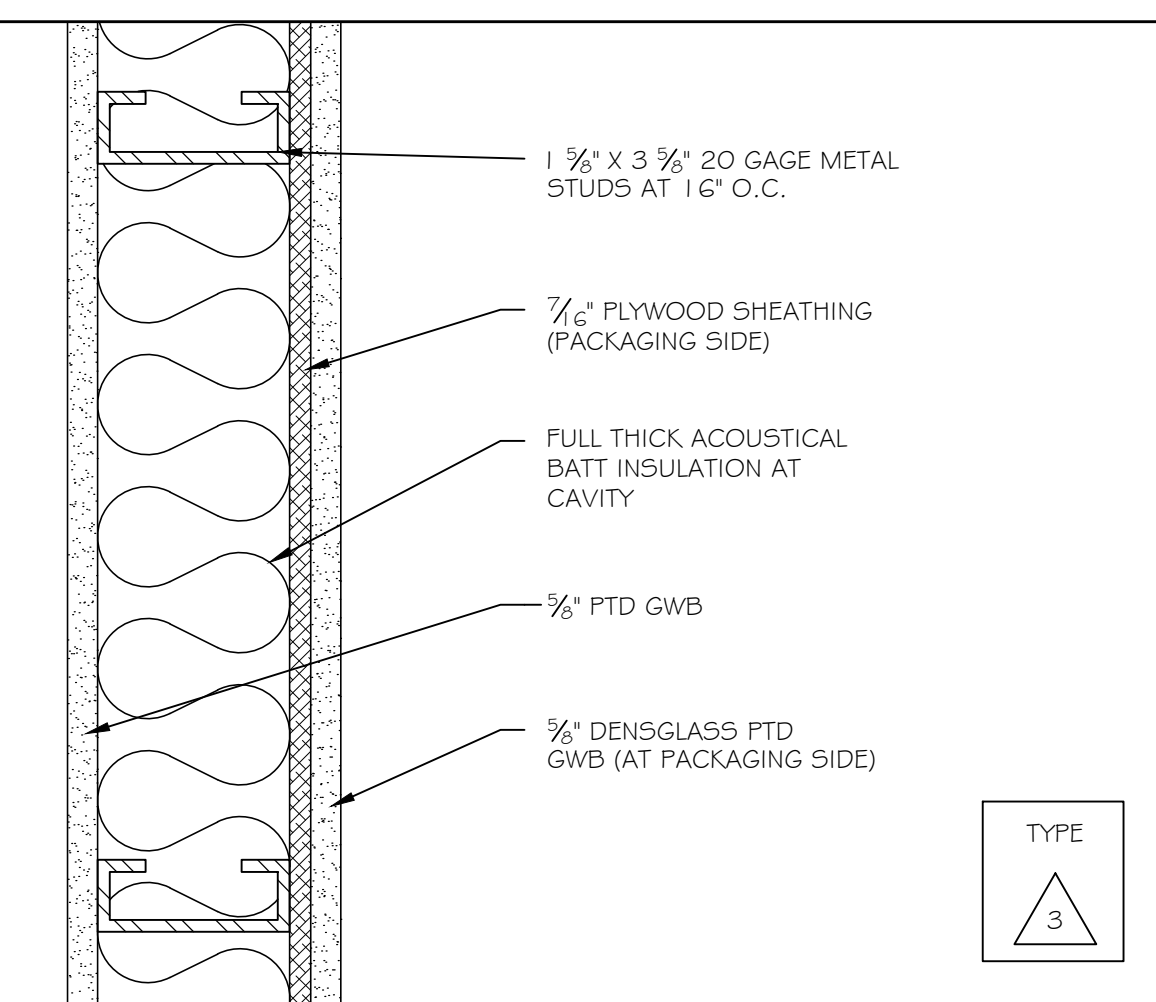
- TILE SHALL BE KEGATEK - MATCH EXISTING 2014 PACKAGING ADDITION.
- VINYL BASE SHALL BE 4" COVE BASE - COLOR SELECTED BY ARCHITECT.



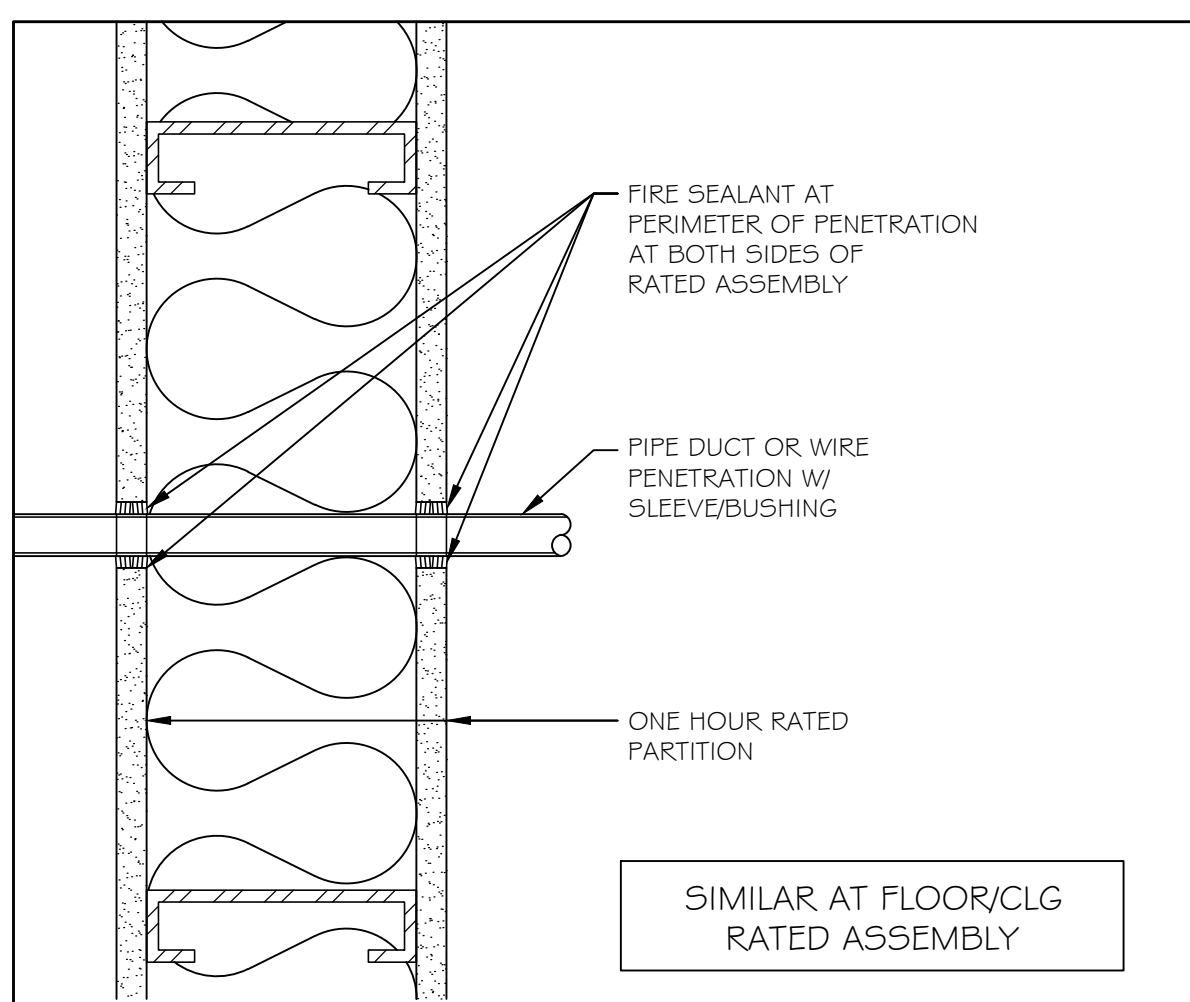
④ FURRED WALL AT OFFICE / ELECTRICAL 3" = 1'-0"



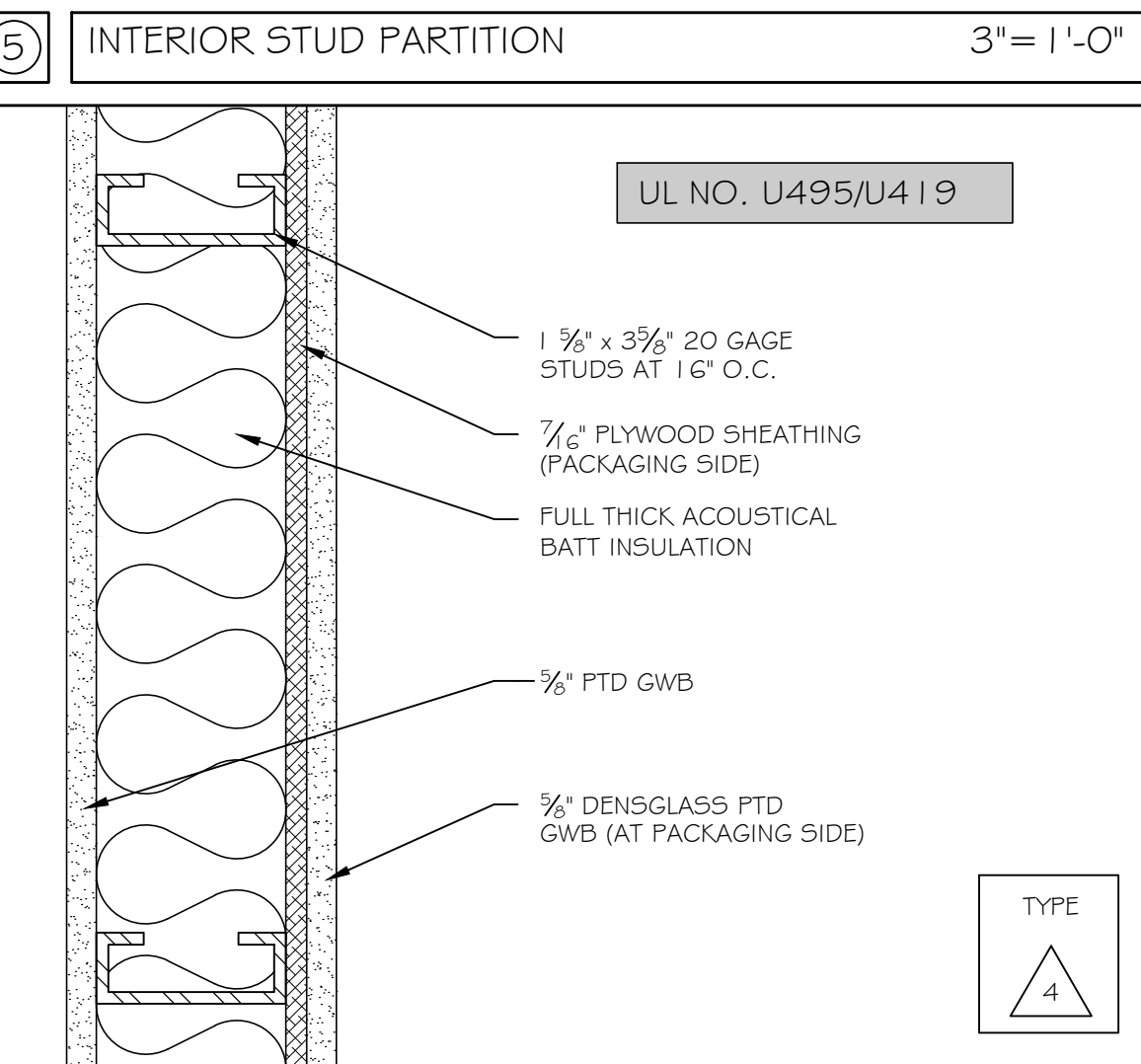
⑦ KICKER WALL DETAIL 1 1/2" = 1'-0"



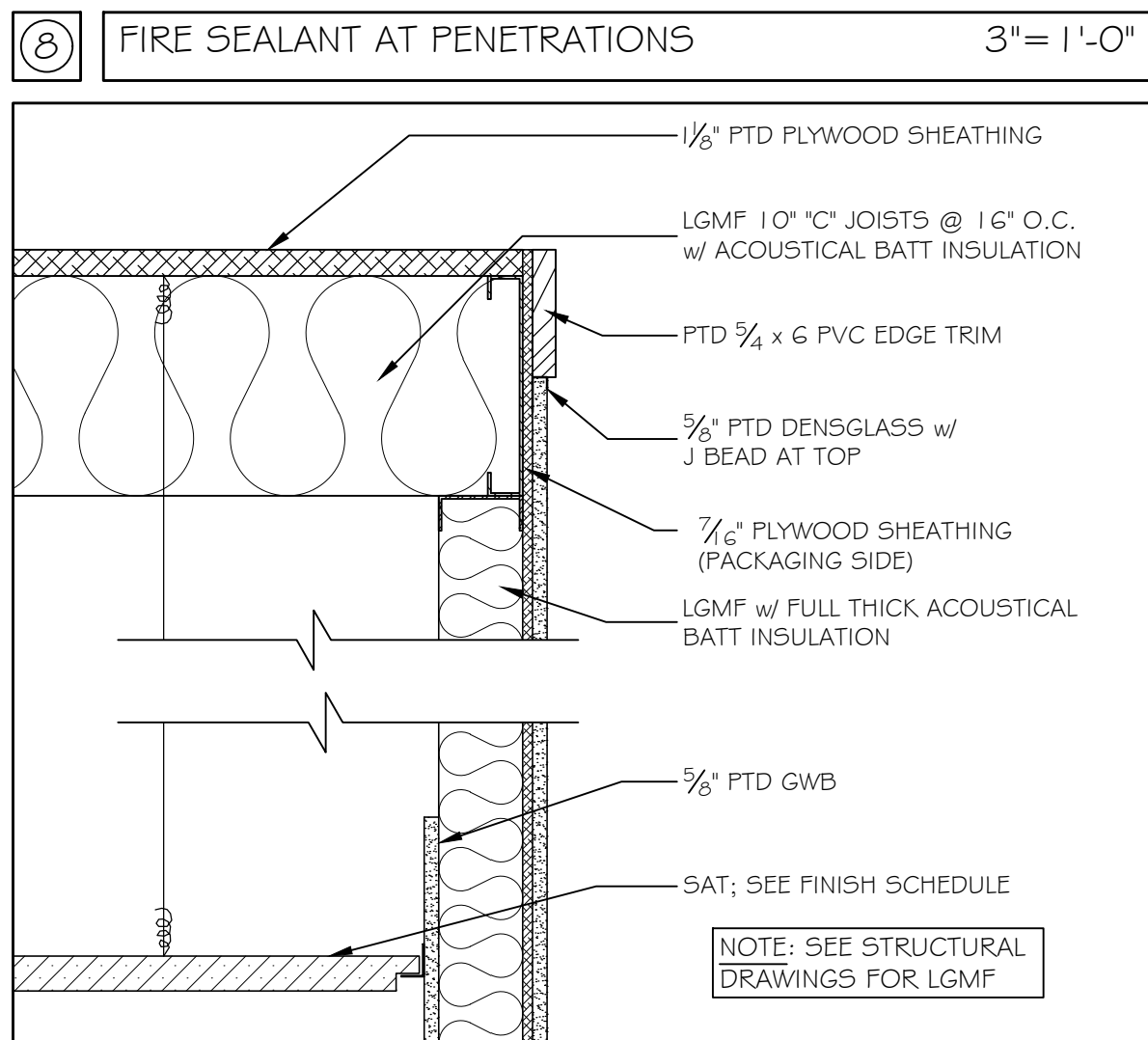
⑤ INTERIOR STUD PARTITION 3" = 1'-0"



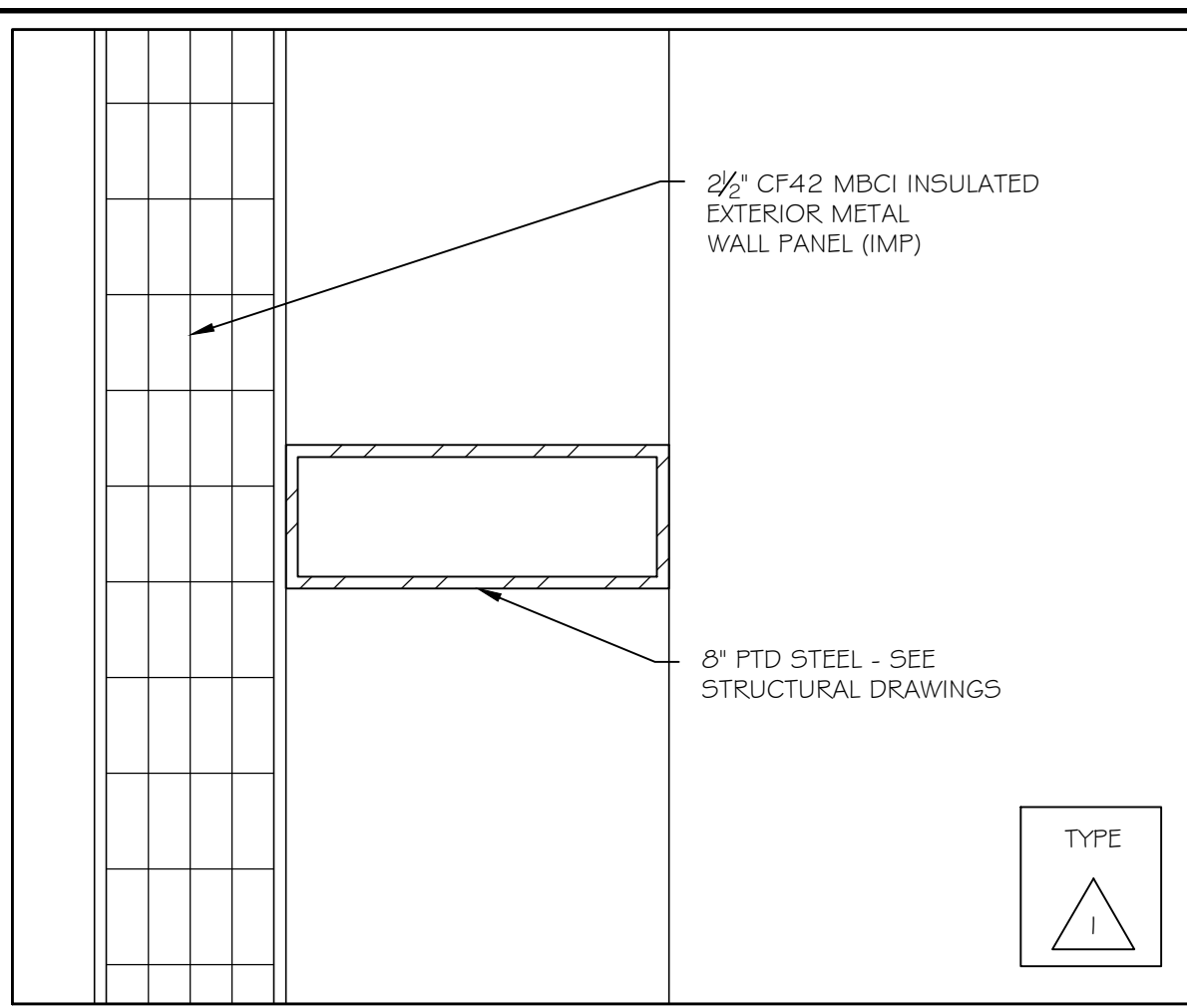
⑥ FIRE SEALANT AT PENETRATIONS 3" = 1'-0"



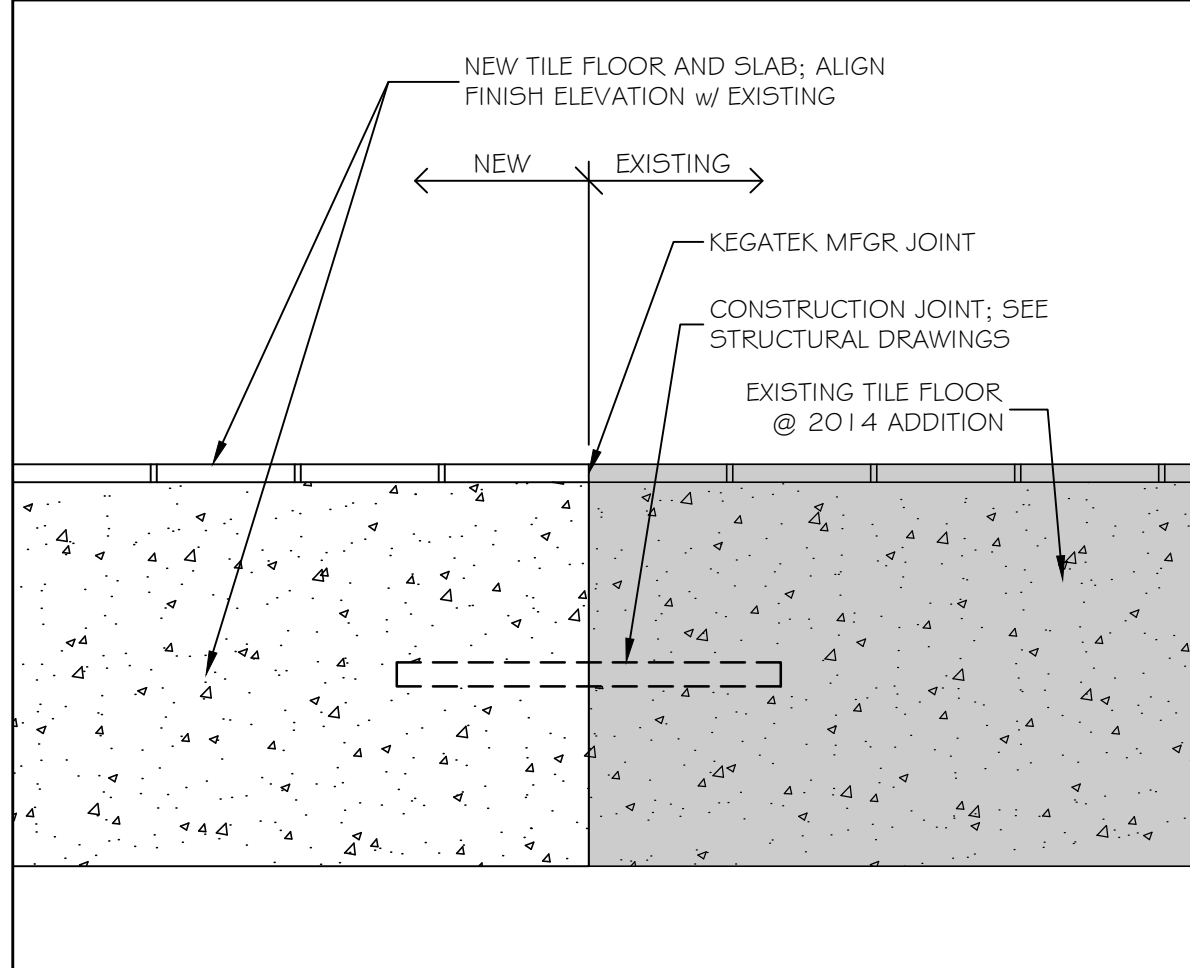
④ 1 HR RATED PARTITION 3" = 1'-0"



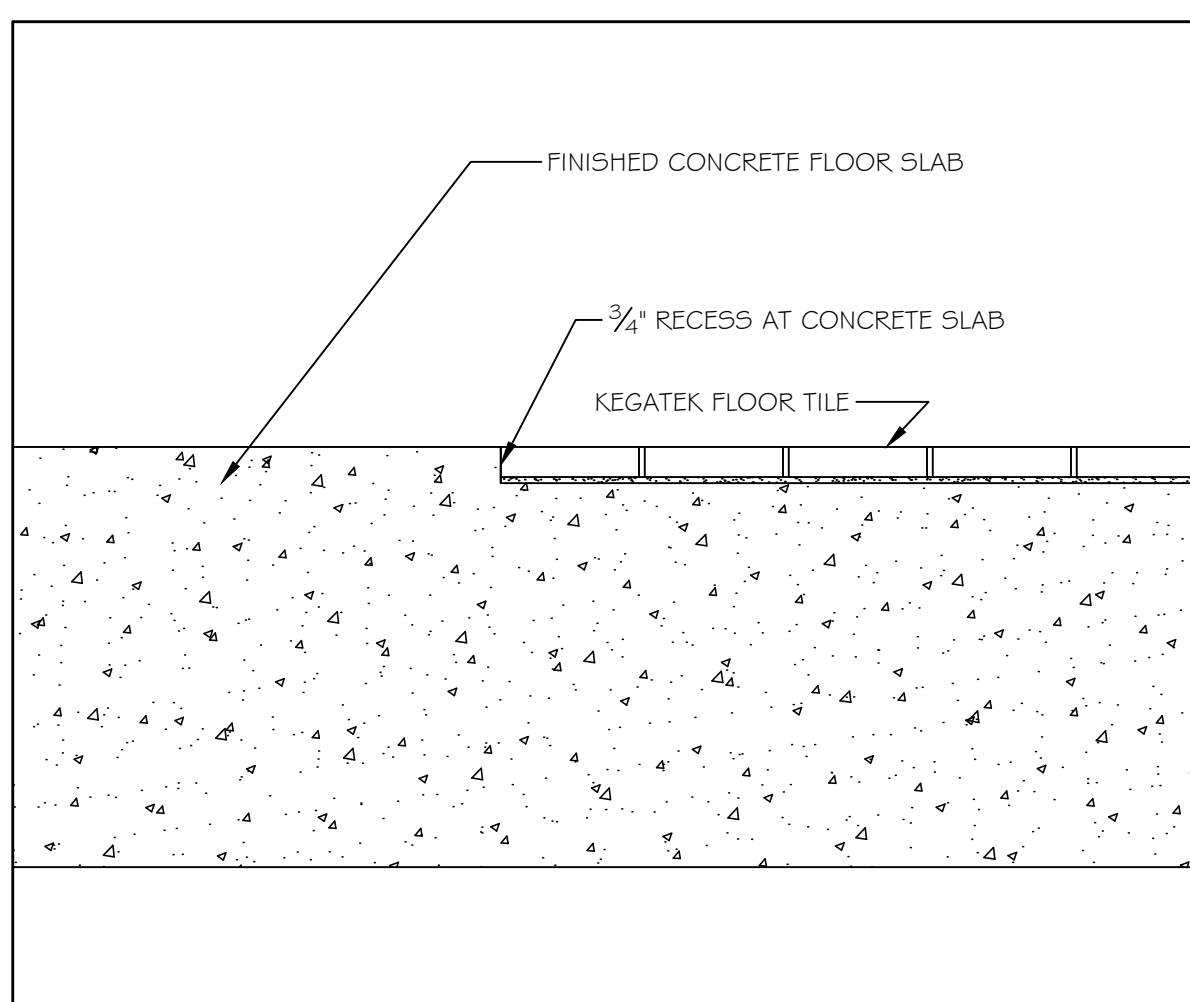
⑨ OFFICE / ELECTRICAL CEILING FRAMING 1 1/2" = 1'-0"



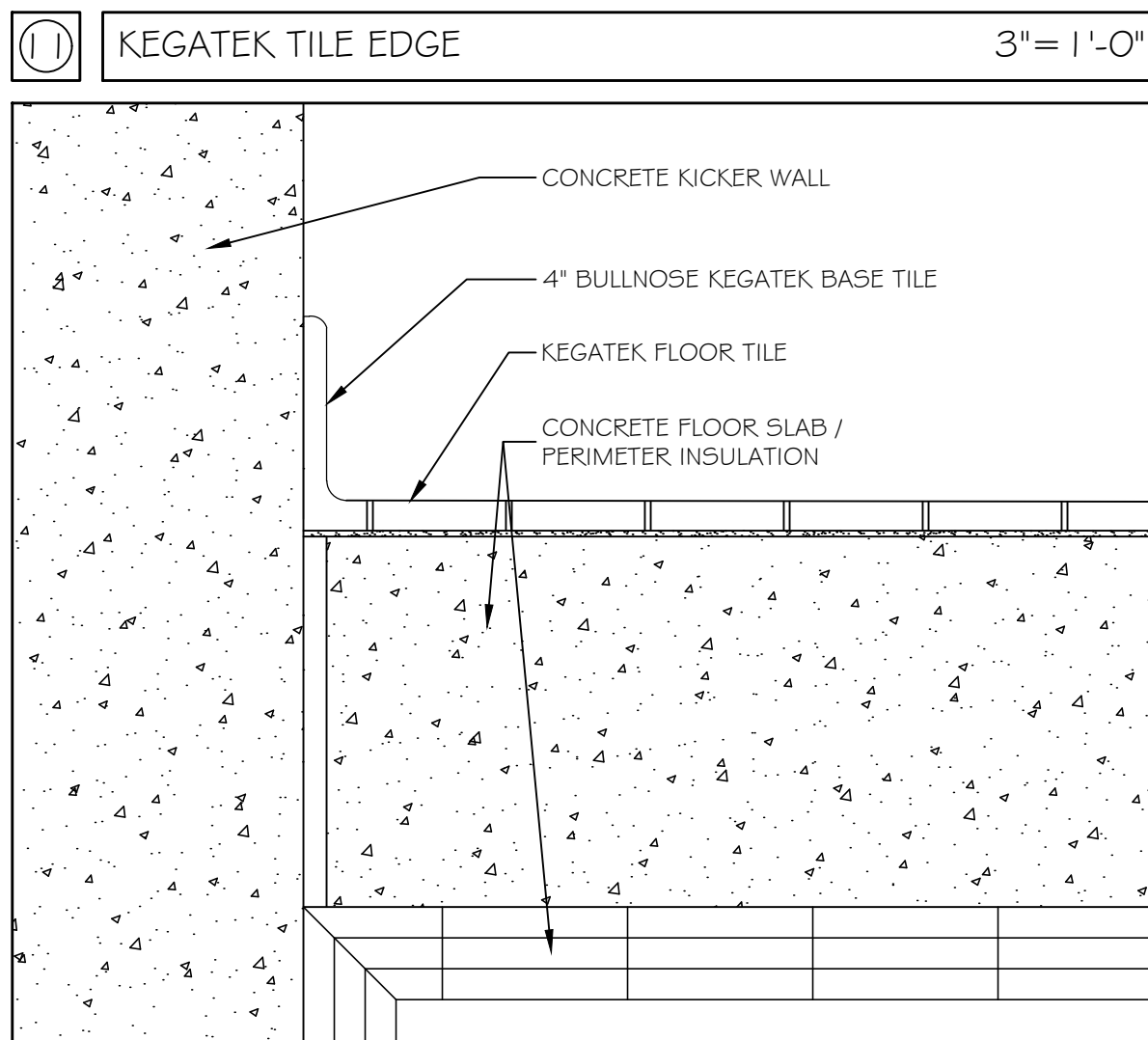
③ EXTERIOR PANEL 3" = 1'-0"



⑩ KEGATEK TILE AT NEW / EXISTING SLAB 3" = 1'-0"



⑪ KEGATEK TILE EDGE 3" = 1'-0"



⑫ KEGATEK TILE BASE 3" = 1'-0"

GRANT HAYS ASSOCIATES
ARCHITECTURE & INTERIOR DESIGN
P.O. BOX 6179 FALMOUTH MAINE 04103
207.871.5900 www.granthays.com

LICENSED ARCHITECT
MICHAEL F. HAYS
No. 1724
STATE OF MAINE
Michael F. Hays

REV/10/17

DRAWING NAME

2018 PACKAGING ADDITION
ALLAGASH BREWING COMPANY
50 INDUSTRIAL WAY
PORTLAND, MAINE 04103
PROJECT # 18-005

WALL SECTIONS, PARTITIONS & FINISHES

DATE: 4 APR 2018
SCALE: AS NOTED
DRAWN: MFH/mgk
JOB NO.: 180112

A-9

COPYRIGHT REPRODUCTION OR REV. OF THIS DOCUMENT WITHOUT WRITTEN PERM. FROM GRANT HAYS ASSOCIATES IS PROHIBITED.