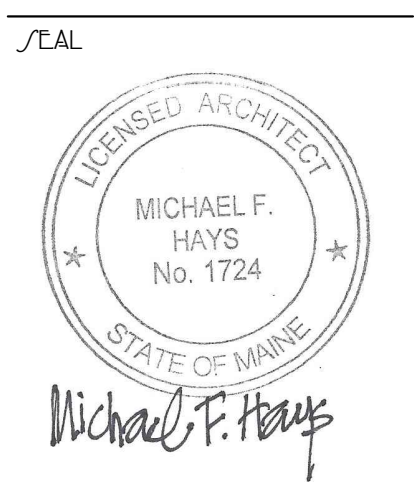


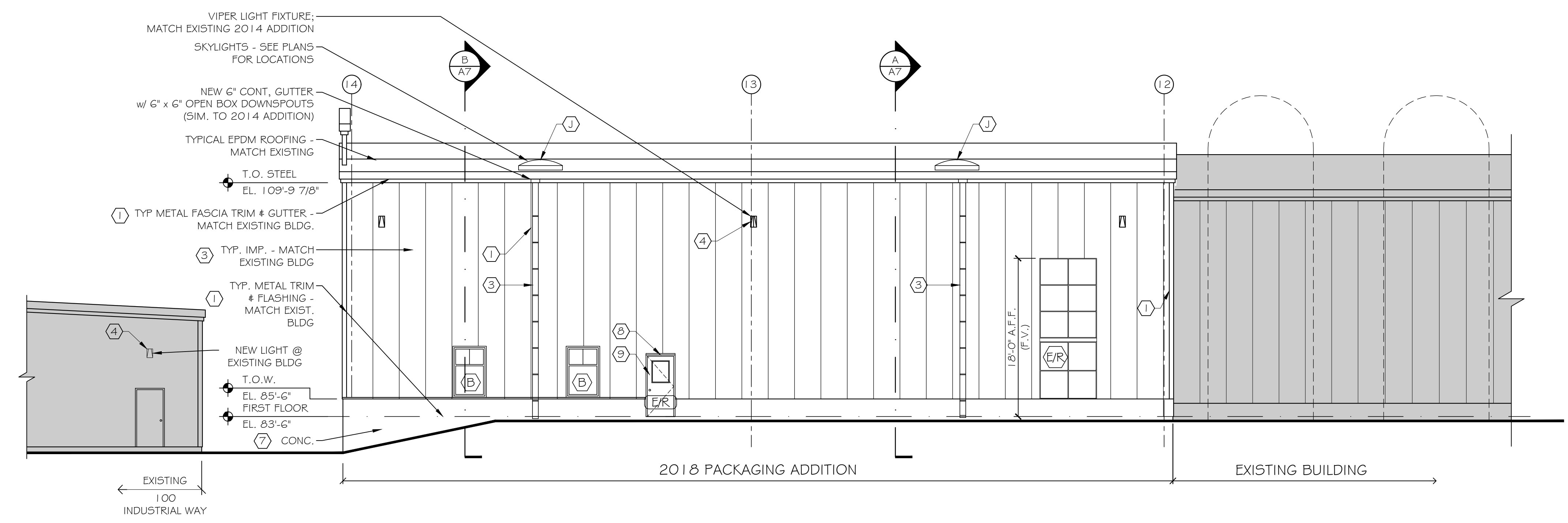
GRANT HAYS
ASSOCIATES
ARCHITECTURE & INTERIOR DESIGN
P.O. BOX 6179 FALMOUTH MAINE 04103
207.871.5900 www.granthays.com



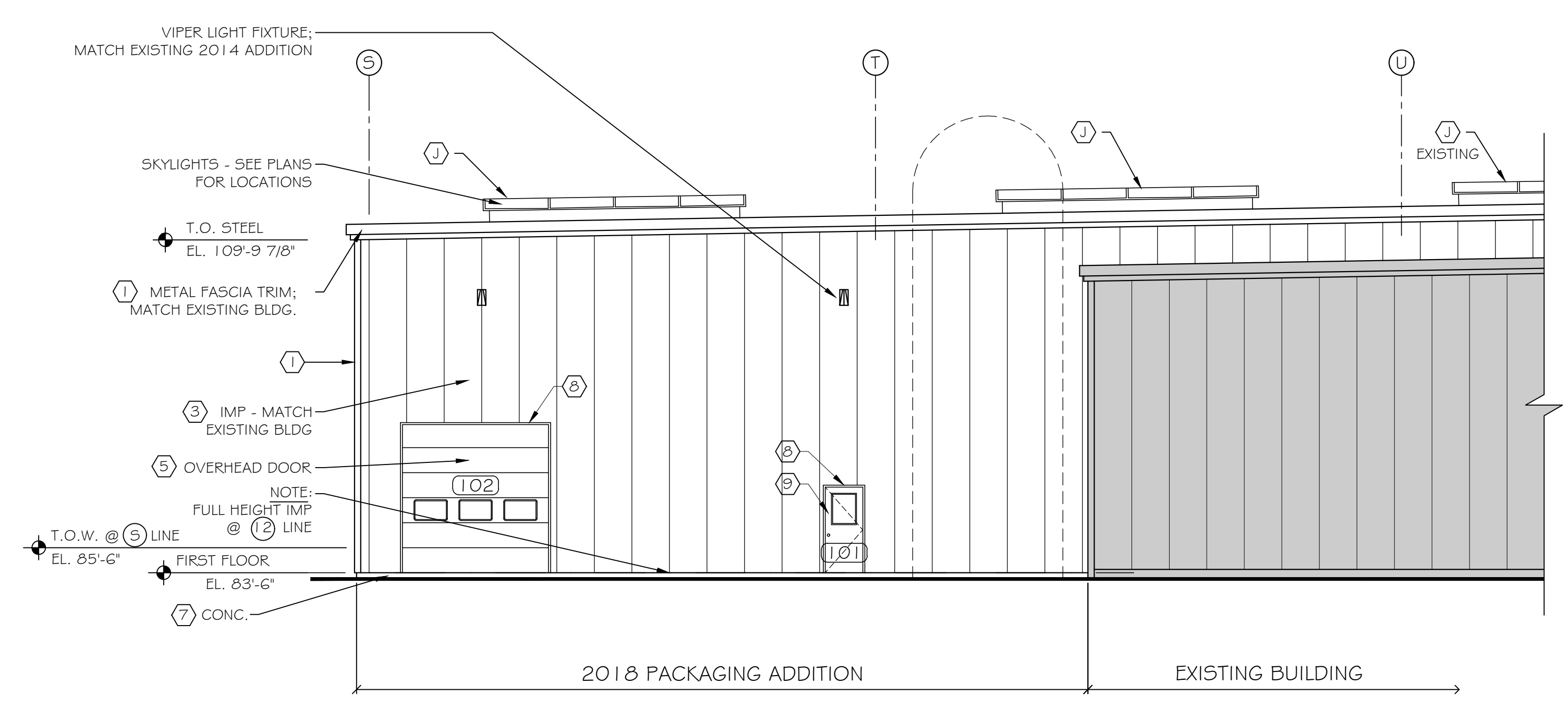
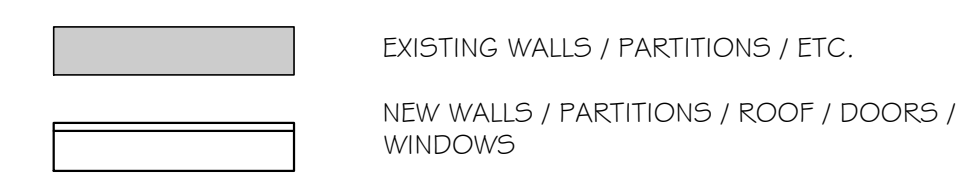
REV/10/17

DRAWING NAME

2018 PACKAGING ADDITION
ALLAGASH
BREWING COMPANY
50 INDUSTRIAL WAY
PORTLAND, MAINE 04103
PROJECT # 18-005



(B) EXTERIOR ELEVATION B
SCALE: 1/8" = 1'-0"



(C) EXTERIOR ELEVATION C
SCALE: 1/8" = 1'-0"

COLOR SCHEDULE	
TAG	COLOR
1	LIGHT BRONZE
2	MILL ALUMINUM
3	LIGHT STONE
4	BLACK
5	WHITE
6	MILL ALUMINUM
7	CONCRETE
8	LIGHT BRONZE
9	BLUE
10	(RESERVED)

NOTE: MATCH EXISTING BUILDING INSULATED EXTERIOR METAL PANELS FROM 2012 ADDITION AT NEW BUILDING ADDITION MATCH TRIM PROFILES AND COLORS AS INDICATED AND AS REASONABLY AVAILABLE.

/SHEET

EXTERIOR
ELEVATIONS
B & C

DATE
4 APR 2018

/SCALE
1/8" = 1'-0"

DRAWN
MFF/mgk

JOB NO.
180112

/SHEET

A-6

COPYRIGHT
REPRODUCTION OR REV. OF THIS
DOCUMENT WITHOUT WRITTEN
PERMISSION FROM GRANT HAYS
ASSOCIATES IS PROHIBITED.