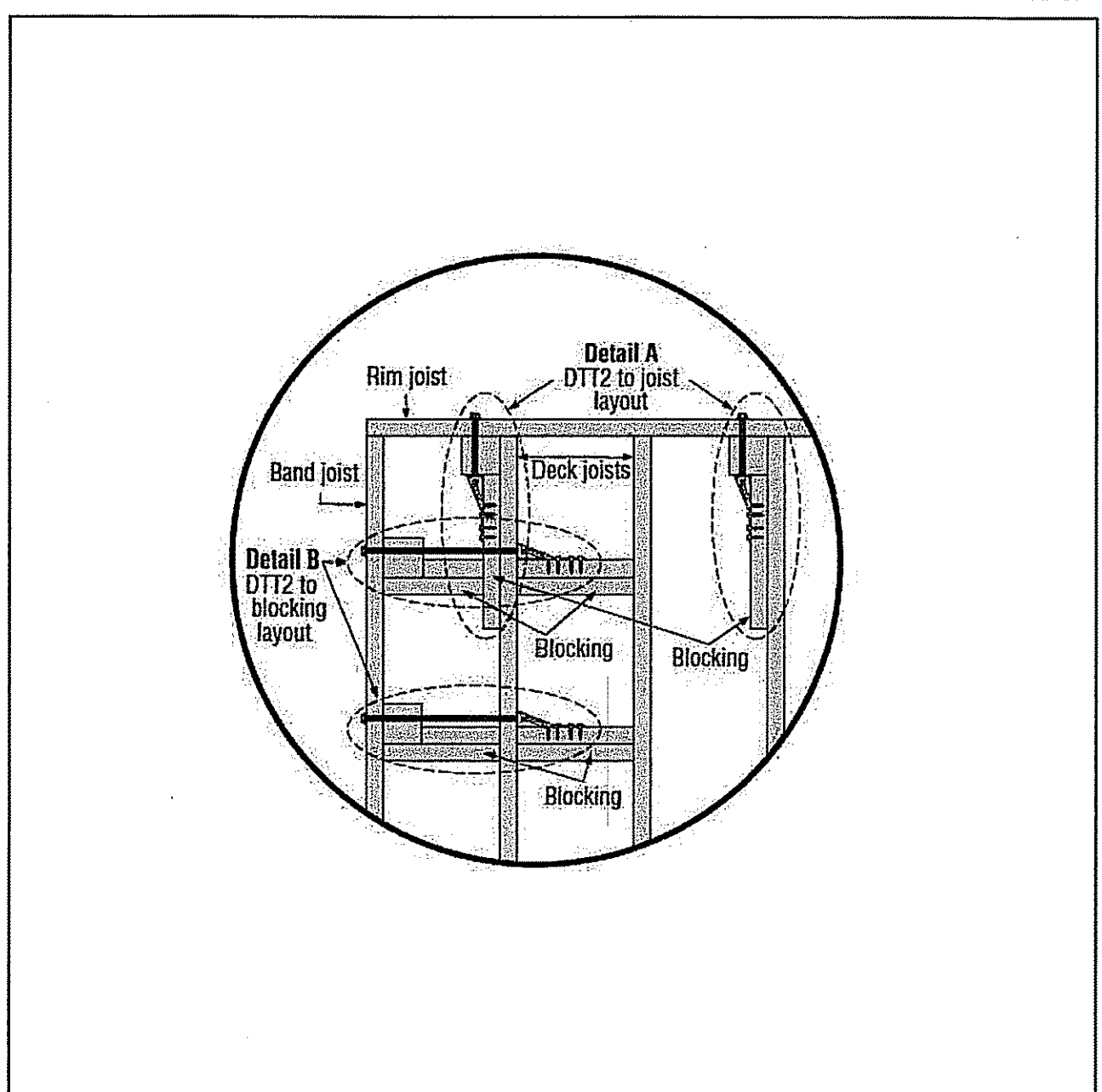
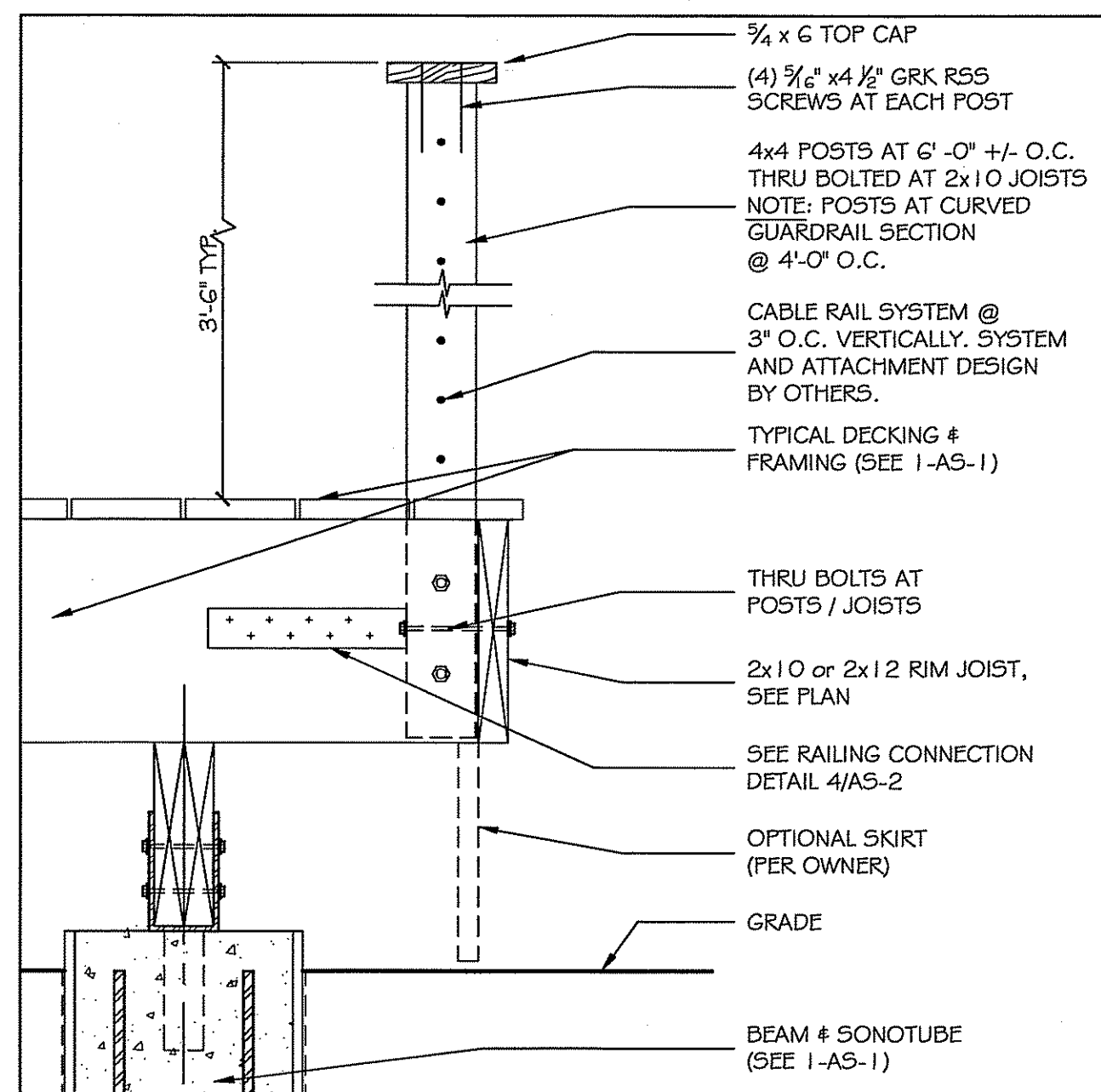


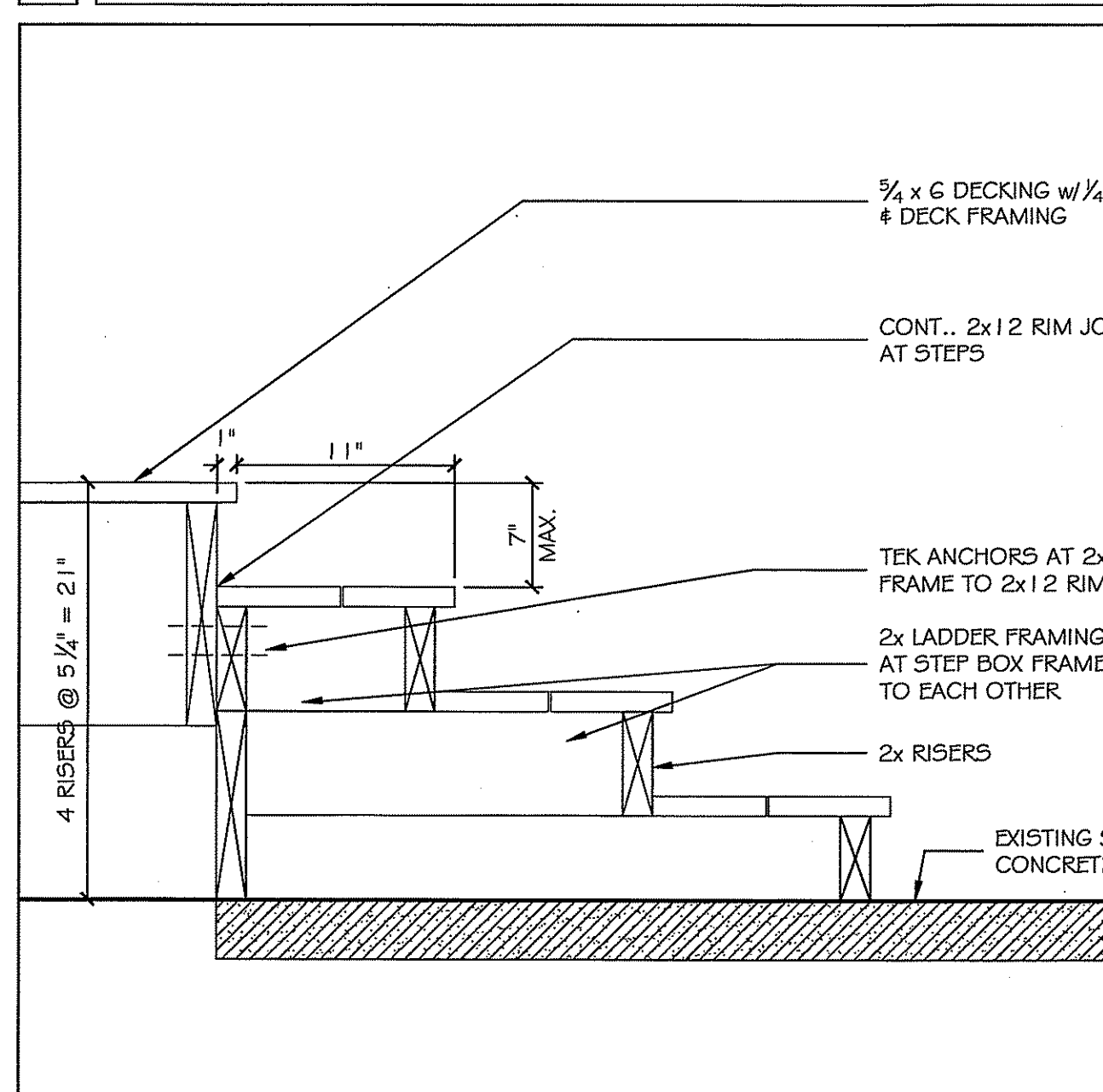
① FRAMING DETAIL 1/2" = 1'-0"

④ RAILING POST CONNECTION DETAIL 1/2" = 1'-0"



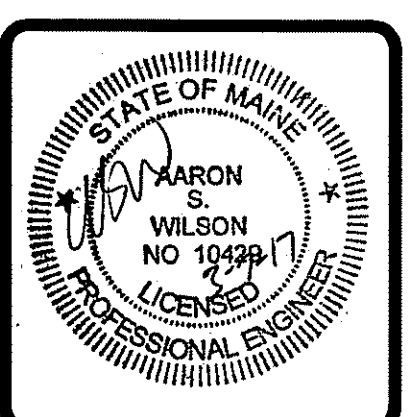
② GUARDRAIL DETAIL 1/2" = 1'-0"

⑤ RAILING POST CONNECTION DETAIL 1/2" = 1'-0"



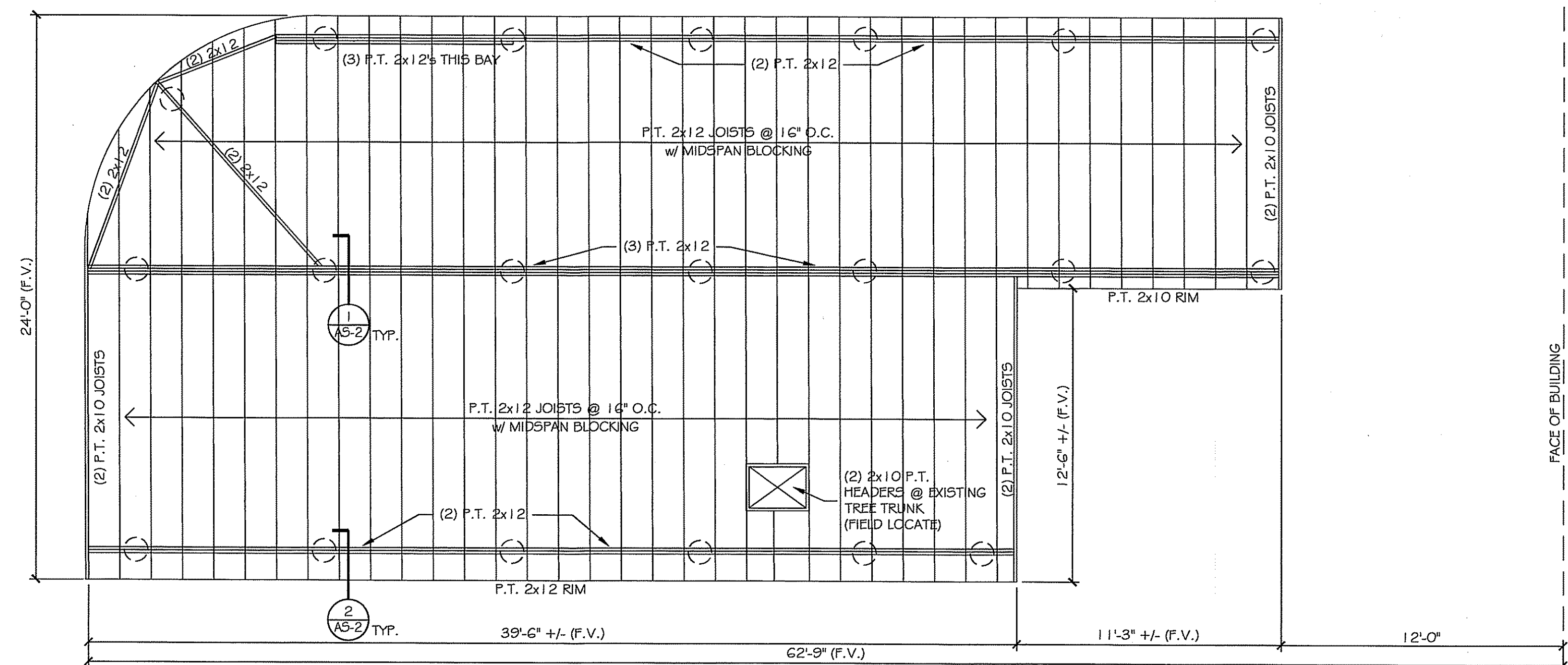
③ STAIR DETAIL 1/2" = 1'-0"

ASSOCIATED DESIGN PARTNERS INC.
 80 Leighton Road Ste A
 Falmouth, Maine 04105
 Office: (207) 878-1751
 Fax: (207) 878-1788
 E-Mail: adp@adpengineering.com

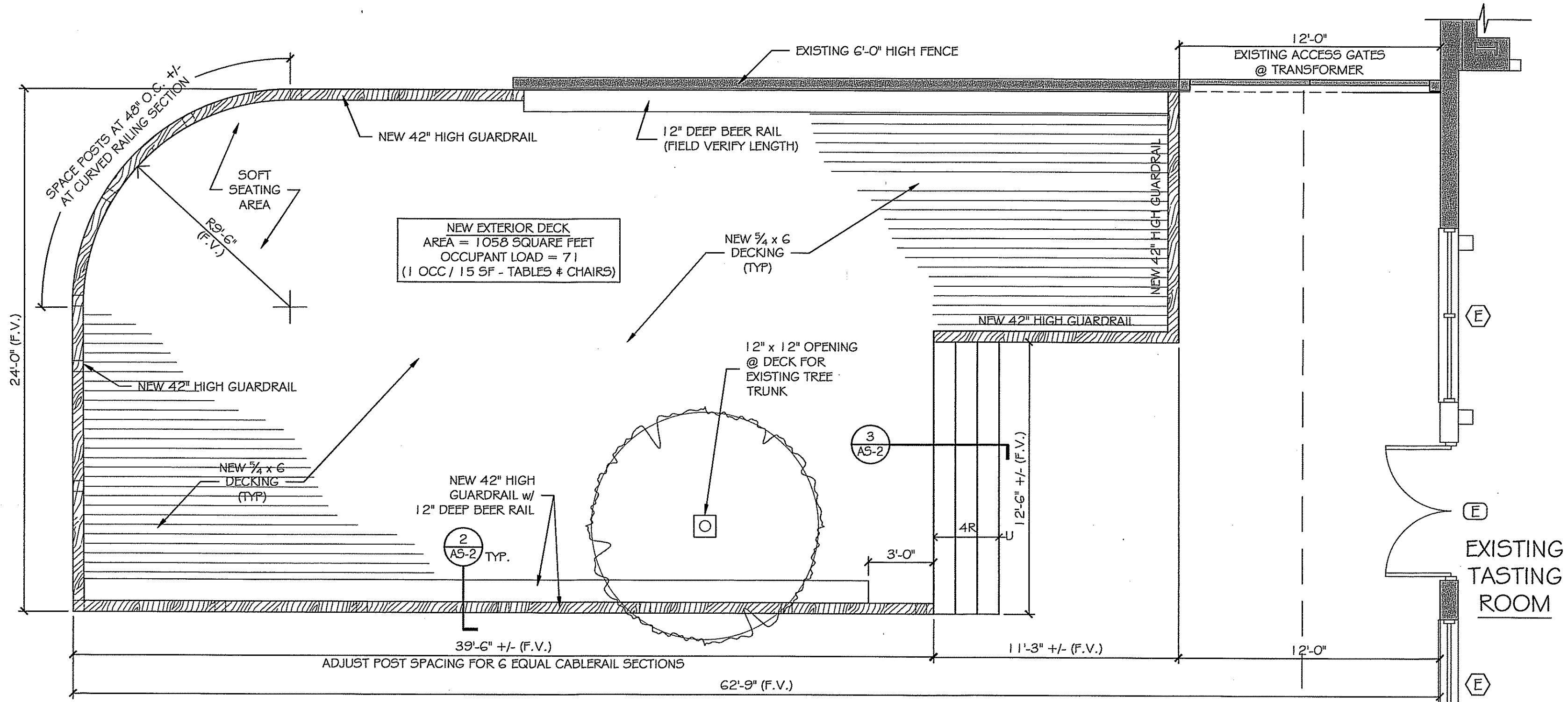


THIS P.E. REVIEW COVERS STRUCTURAL FRAMING MEMBERS SIZES FOR NEW FRAMING ELEMENTS (BEAMS, JOISTS, CONCRETE PIERS, LIMITED CONNECTIONS) DEPICTED ON THIS PLAN ONLY. UNLESS OTHERWISE NOTED, DESIGN AND DETAIL FOR COMPONENTS AND CLADDING, FINISHES, FLOOR PLAN LAYOUT, AND LIFE SAFETY CODE REQUIREMENTS HAVE NOT BEEN REVIEWED AND ARE BEYOND THE PURVIEW OF THIS P.E. SEAL. USE OF THESE DRAWINGS INDICATES OWNER/CONTRACTOR AGREEMENT TO THESE TERMS. THE BUILDING CONTRACTOR IS RESPONSIBLE TO ENSURE ALL ASPECTS OF THE BUILDING ARE CONSTRUCTED IN ACCORDANCE WITH THE IBC 2009 BUILDING CODE.

GRANT HAYS ASSOCIATES
 ARCHITECTURE & INTERIOR DESIGN
 P.O. BOX 6179 FALMOUTH MAINE 04105
 207.871.5900 www.granthays.com
 LICENSED ARCHITECT
 MICHAEL F. HAYS
 No. 1724
 Michael F. Hays



NEW DECK FRAMING PLAN SCALE: 1/4" = 1'-0"



NEW DECK PLAN SCALE: 1/4" = 1'-0"

DRAWING NAME
 NEW EXTERIOR DECK AT ALLAGASH BREWING COMPANY
 50 INDUSTRIAL WAY PORTLAND, MAINE 04105
 CBL: 326 B 006001
 SHEET

NEW DECK FRAMING PLAN & DETAILS
 DATE: 7 MAR 2017
 SCALE: AS NOTED
 DRAWN: MFH/mgk
 JOB NO.: 170501
 SHEET: AS-2
 COPYRIGHT REPRODUCTION OR REVUE OF THIS DOCUMENT WITHOUT WRITTEN PERMISSION FROM GRANT HAYS ASSOCIATES IS PROHIBITED.