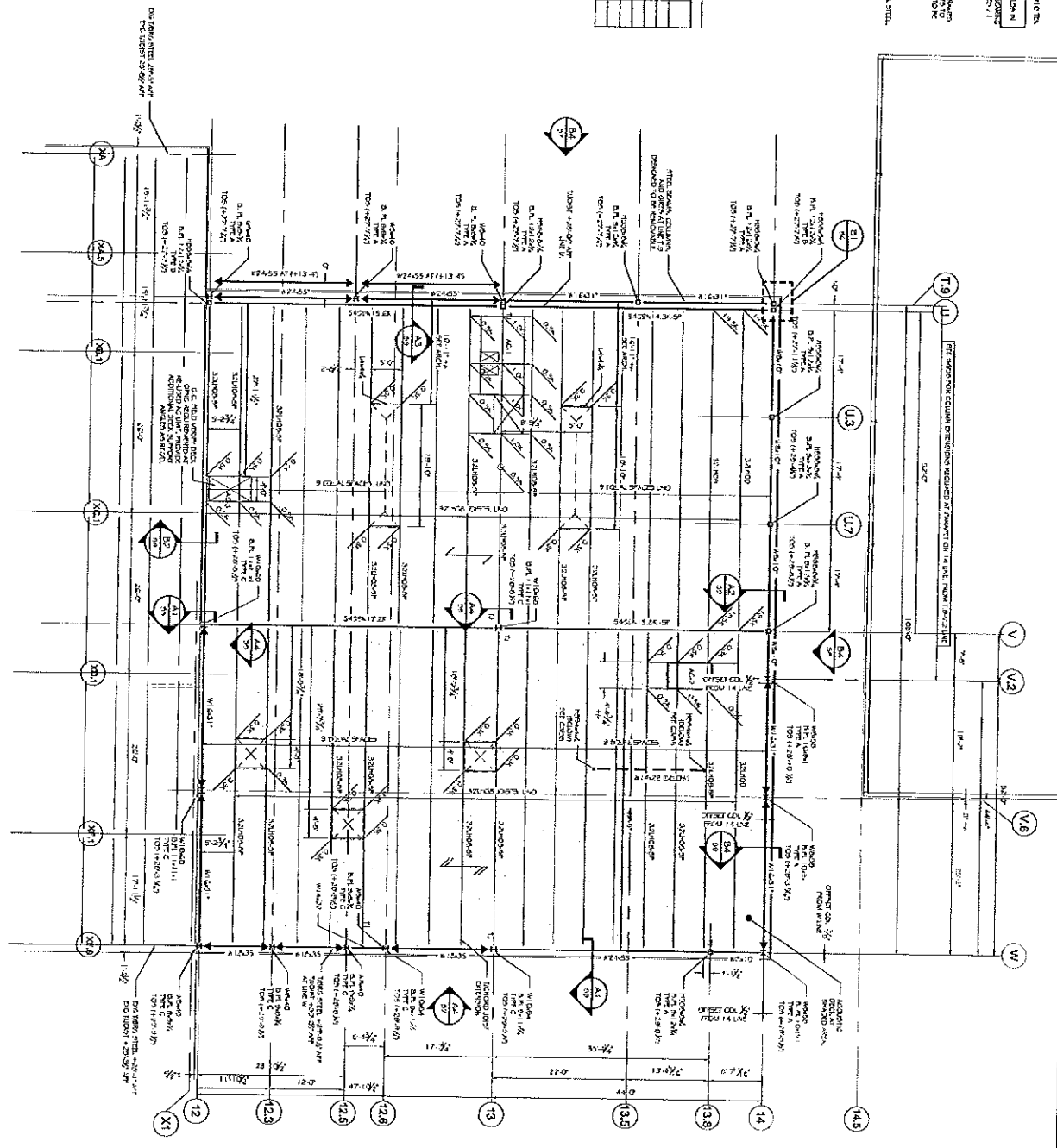


- GENERAL NOTES:**
- SEE THE PERMITTING AGENCY FOR ALL APPLICABLE LOCAL, STATE AND FEDERAL REGULATIONS.
 - ALL DIMENSIONS ARE TO FACE UNLESS OTHERWISE NOTED.
 - ALL MATERIALS SHALL BE AS SHOWN UNLESS OTHERWISE NOTED.
 - ALL JOISTS SHALL BE SPACED AT 16" ON CENTER UNLESS OTHERWISE NOTED.
 - ALL TRUSSES SHALL BE AS SHOWN UNLESS OTHERWISE NOTED.
 - ALL ROOFING SHALL BE AS SHOWN UNLESS OTHERWISE NOTED.
 - ALL FLASHING SHALL BE AS SHOWN UNLESS OTHERWISE NOTED.
 - ALL GUTTERS SHALL BE AS SHOWN UNLESS OTHERWISE NOTED.
 - ALL SLOPES SHALL BE AS SHOWN UNLESS OTHERWISE NOTED.
 - ALL CONNECTIONS SHALL BE AS SHOWN UNLESS OTHERWISE NOTED.
 - ALL BRACING SHALL BE AS SHOWN UNLESS OTHERWISE NOTED.
 - ALL WIND UPLIFT SHALL BE AS SHOWN UNLESS OTHERWISE NOTED.
 - ALL SEISMIC SHALL BE AS SHOWN UNLESS OTHERWISE NOTED.
 - ALL OTHERS SHALL BE AS SHOWN UNLESS OTHERWISE NOTED.

WINDLOAD CONNECTION SCHEDULE

MEMBER	SECTION	TYPE	CONNECTION
W1	W1-1	W1	W1-1
W2	W2-1	W2	W2-1
W3	W3-1	W3	W3-1
W4	W4-1	W4	W4-1
W5	W5-1	W5	W5-1
W6	W6-1	W6	W6-1
W7	W7-1	W7	W7-1
W8	W8-1	W8	W8-1
W9	W9-1	W9	W9-1
W10	W10-1	W10	W10-1
W11	W11-1	W11	W11-1
W12	W12-1	W12	W12-1
W13	W13-1	W13	W13-1
W14	W14-1	W14	W14-1
W15	W15-1	W15	W15-1
W16	W16-1	W16	W16-1
W17	W17-1	W17	W17-1
W18	W18-1	W18	W18-1
W19	W19-1	W19	W19-1
W20	W20-1	W20	W20-1
W21	W21-1	W21	W21-1
W22	W22-1	W22	W22-1
W23	W23-1	W23	W23-1
W24	W24-1	W24	W24-1
W25	W25-1	W25	W25-1
W26	W26-1	W26	W26-1
W27	W27-1	W27	W27-1
W28	W28-1	W28	W28-1
W29	W29-1	W29	W29-1
W30	W30-1	W30	W30-1
W31	W31-1	W31	W31-1
W32	W32-1	W32	W32-1
W33	W33-1	W33	W33-1
W34	W34-1	W34	W34-1
W35	W35-1	W35	W35-1
W36	W36-1	W36	W36-1
W37	W37-1	W37	W37-1
W38	W38-1	W38	W38-1
W39	W39-1	W39	W39-1
W40	W40-1	W40	W40-1
W41	W41-1	W41	W41-1
W42	W42-1	W42	W42-1
W43	W43-1	W43	W43-1
W44	W44-1	W44	W44-1
W45	W45-1	W45	W45-1
W46	W46-1	W46	W46-1
W47	W47-1	W47	W47-1
W48	W48-1	W48	W48-1
W49	W49-1	W49	W49-1
W50	W50-1	W50	W50-1
W51	W51-1	W51	W51-1
W52	W52-1	W52	W52-1
W53	W53-1	W53	W53-1
W54	W54-1	W54	W54-1
W55	W55-1	W55	W55-1
W56	W56-1	W56	W56-1
W57	W57-1	W57	W57-1
W58	W58-1	W58	W58-1
W59	W59-1	W59	W59-1
W60	W60-1	W60	W60-1
W61	W61-1	W61	W61-1
W62	W62-1	W62	W62-1
W63	W63-1	W63	W63-1
W64	W64-1	W64	W64-1
W65	W65-1	W65	W65-1
W66	W66-1	W66	W66-1
W67	W67-1	W67	W67-1
W68	W68-1	W68	W68-1
W69	W69-1	W69	W69-1
W70	W70-1	W70	W70-1
W71	W71-1	W71	W71-1
W72	W72-1	W72	W72-1
W73	W73-1	W73	W73-1
W74	W74-1	W74	W74-1
W75	W75-1	W75	W75-1
W76	W76-1	W76	W76-1
W77	W77-1	W77	W77-1
W78	W78-1	W78	W78-1
W79	W79-1	W79	W79-1
W80	W80-1	W80	W80-1
W81	W81-1	W81	W81-1
W82	W82-1	W82	W82-1
W83	W83-1	W83	W83-1
W84	W84-1	W84	W84-1
W85	W85-1	W85	W85-1
W86	W86-1	W86	W86-1
W87	W87-1	W87	W87-1
W88	W88-1	W88	W88-1
W89	W89-1	W89	W89-1
W90	W90-1	W90	W90-1
W91	W91-1	W91	W91-1
W92	W92-1	W92	W92-1
W93	W93-1	W93	W93-1
W94	W94-1	W94	W94-1
W95	W95-1	W95	W95-1
W96	W96-1	W96	W96-1
W97	W97-1	W97	W97-1
W98	W98-1	W98	W98-1
W99	W99-1	W99	W99-1
W100	W100-1	W100	W100-1



REVISIONS

NO.	BY	DESCRIPTION	DATE
1	ASW	ISSUED FOR CONSTRUCTION	3/5/11

DATE: 3/27/11
SCALE: 1/8" = 1'-0"
PROJECT NO.: 14064
DRAWN BY: ASW
CHECKED BY: ASW
PROJECT NUMBER: 14064
SHEET NO.: S2

PROJECT: ALLAGASH 2015 EXPANSION
 50 INDUSTRIAL WAY, PORTLAND, MAINE
 FOR ALLAGASH BREWING CO.

SHEET TITLE: ROOF FRAMING PLAN
 ISSUED FOR PERMITTING

ASSOCIATED DESIGN PARTNERS INC.

80 Leglise Road
 Falmouth, Maine 04105

Office: (207) 878-1751
 Fax: (207) 878-1758
 E-Mail: asd@adpvt.com

