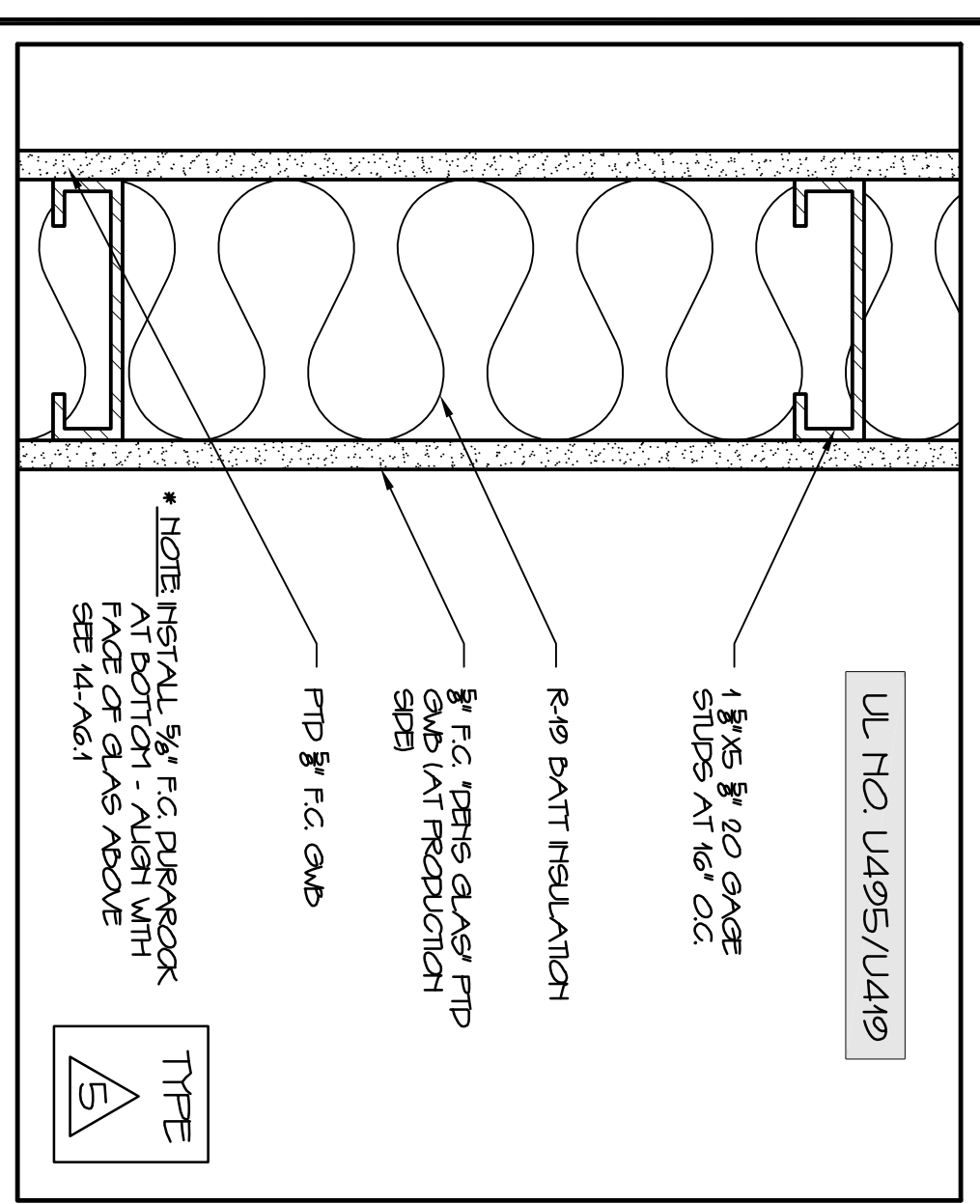
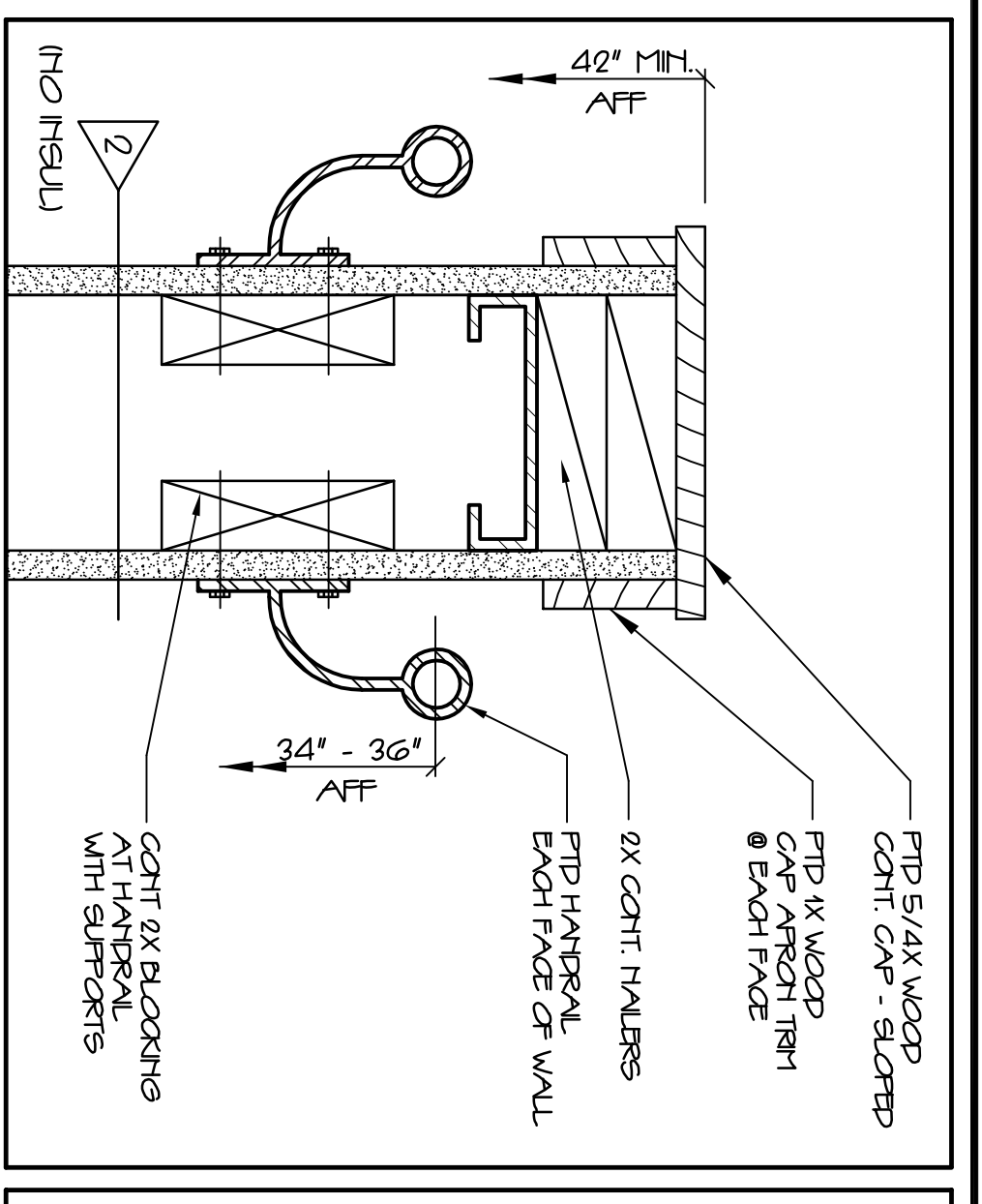


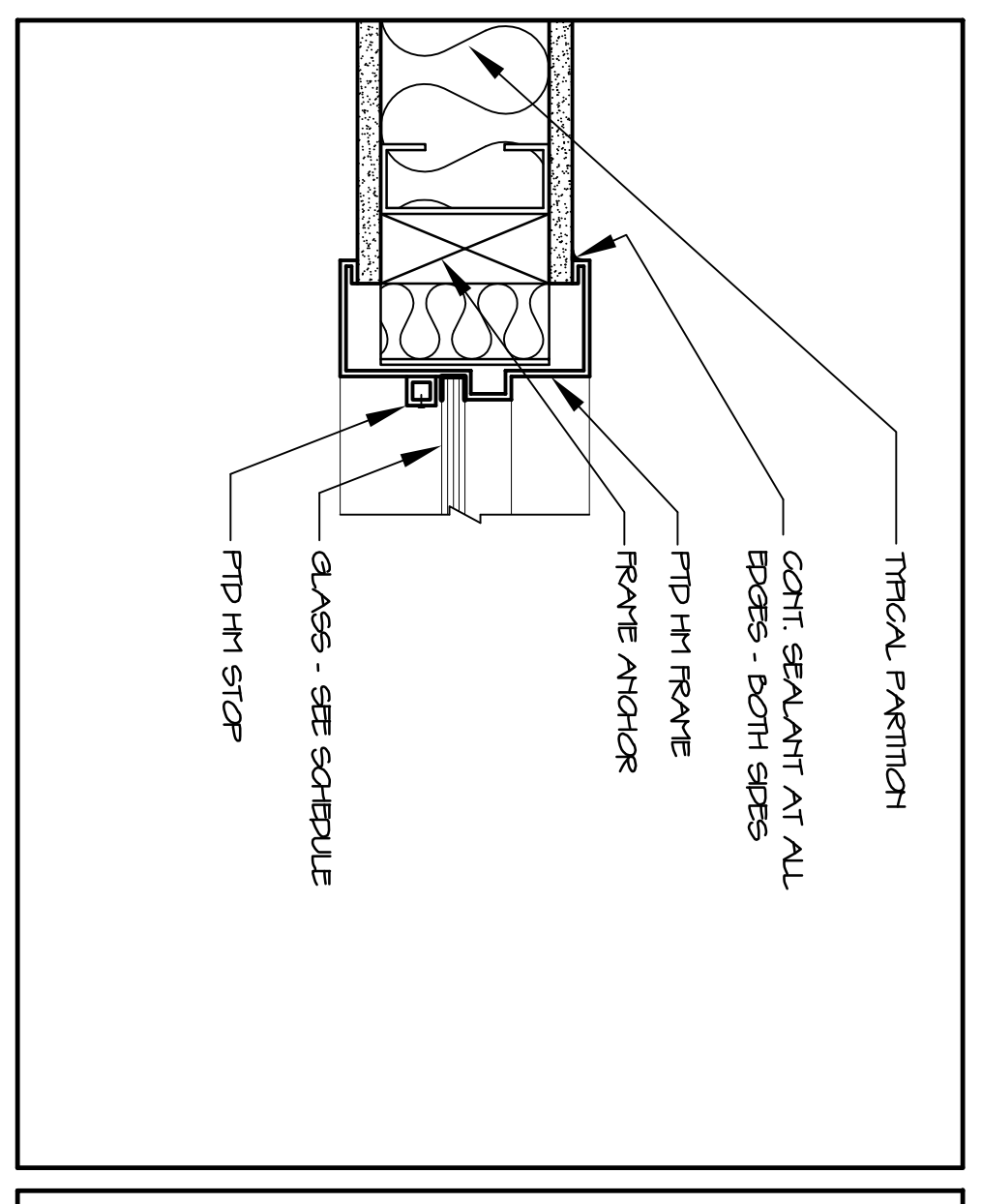
1 EXTERIOR PANEL WALL 3'-4\"/>



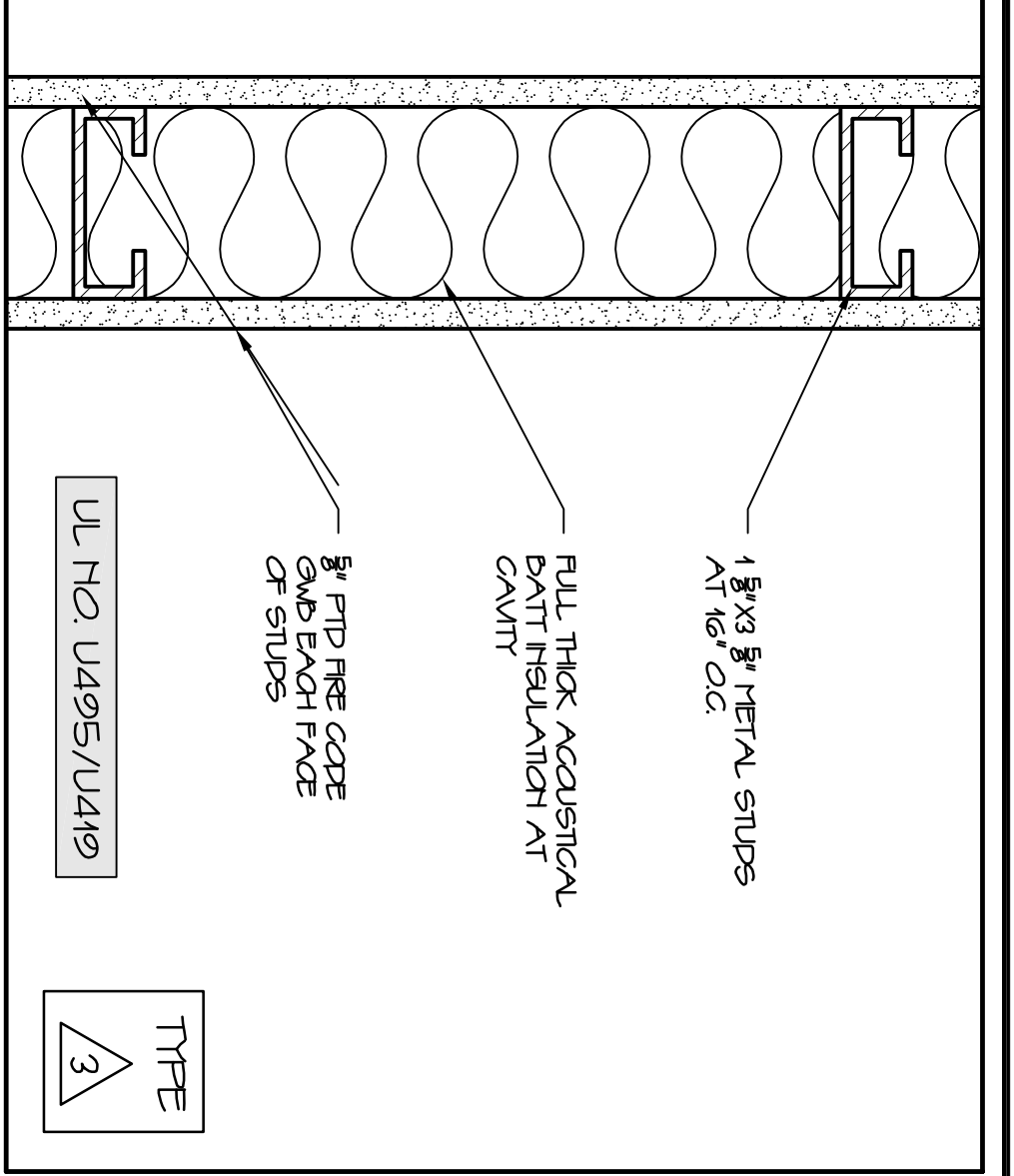
2 ONE HOUR RATED PARTITION 3'-4\"/>



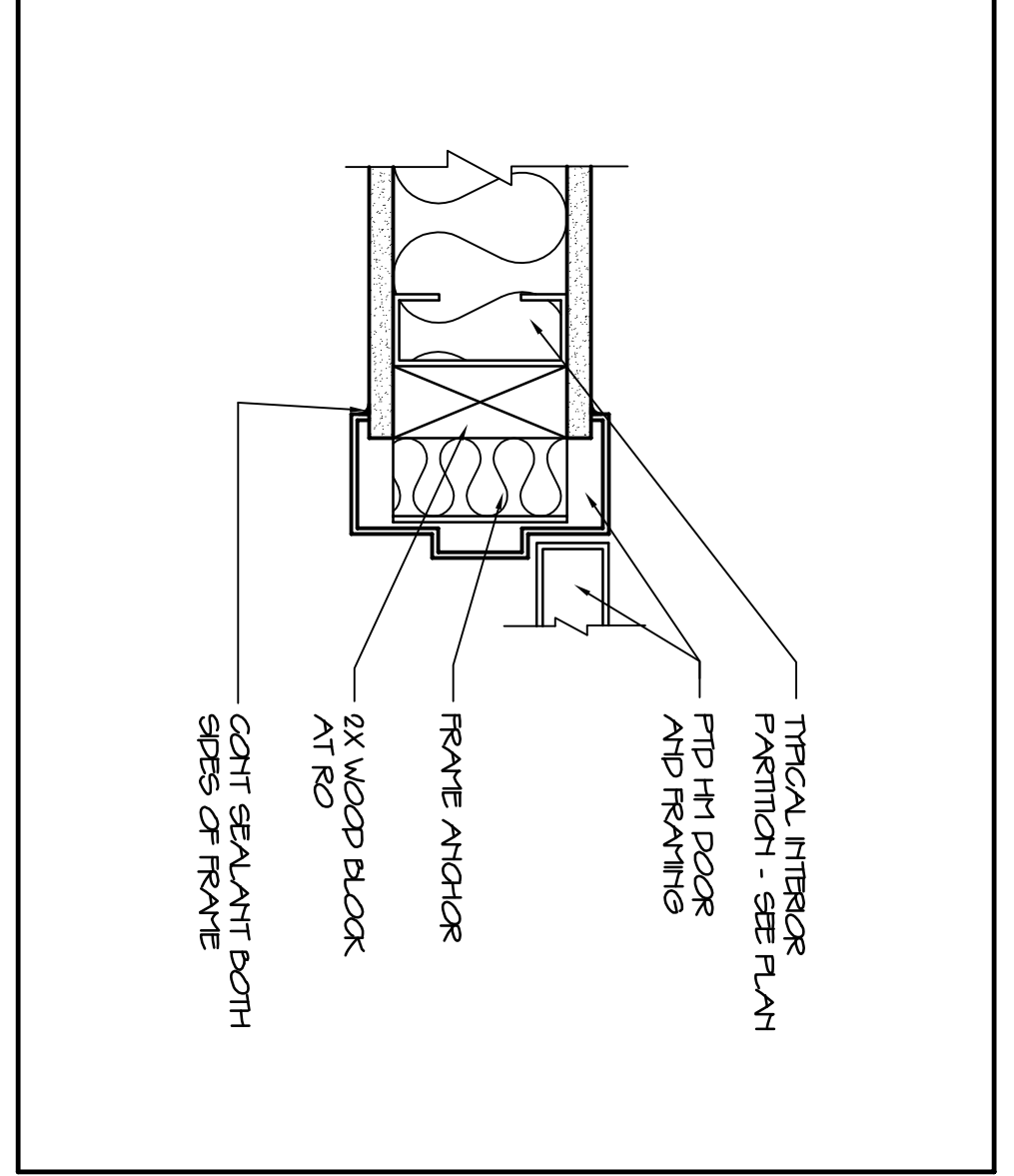
3 STAR QUARRAL 3'-4\"/>



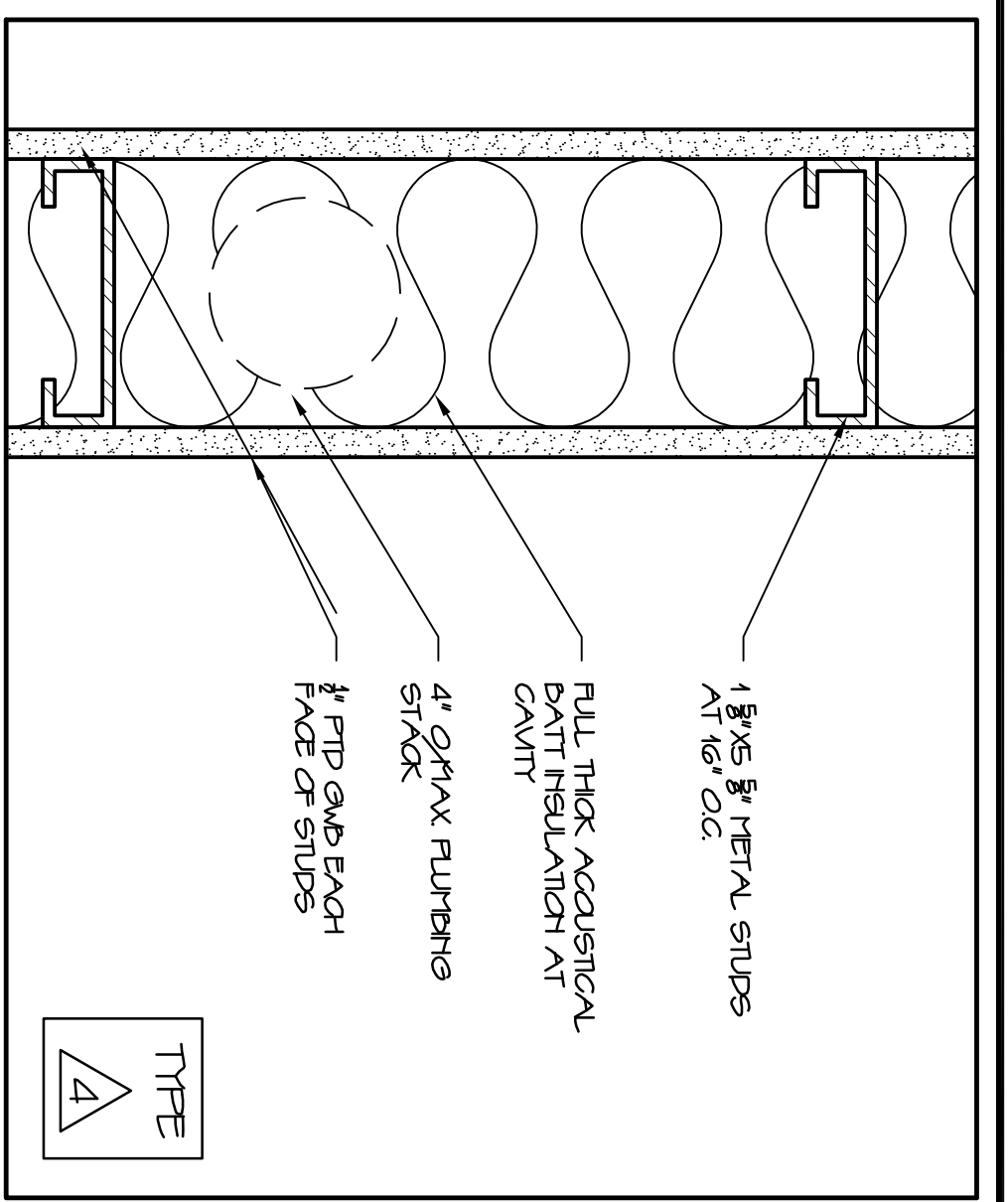
4 INTERIOR HTL WINDOW 3'-4\"/>



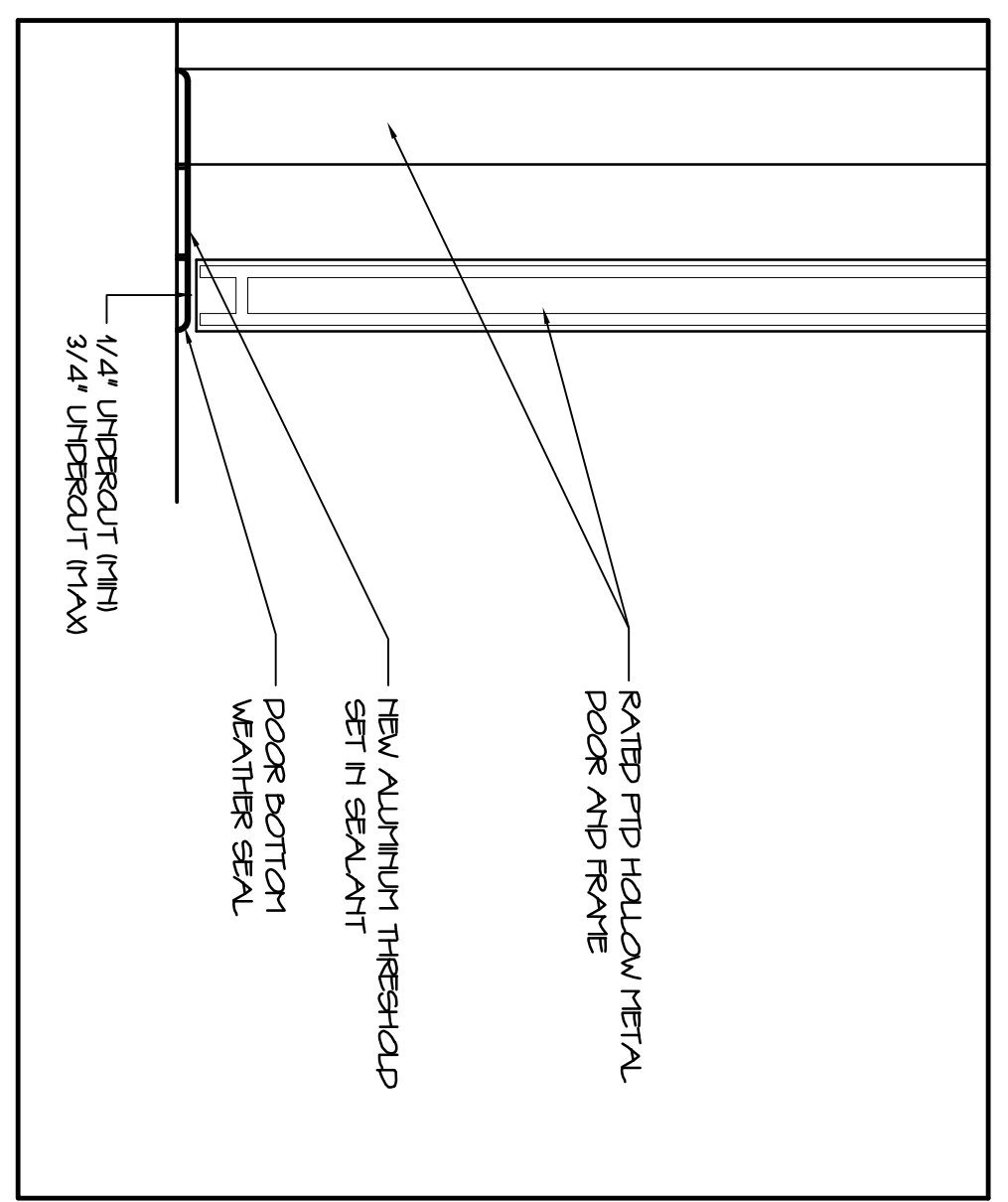
5 INTERIOR ONE HR RATED STUD PARTITION 3'-4\"/>



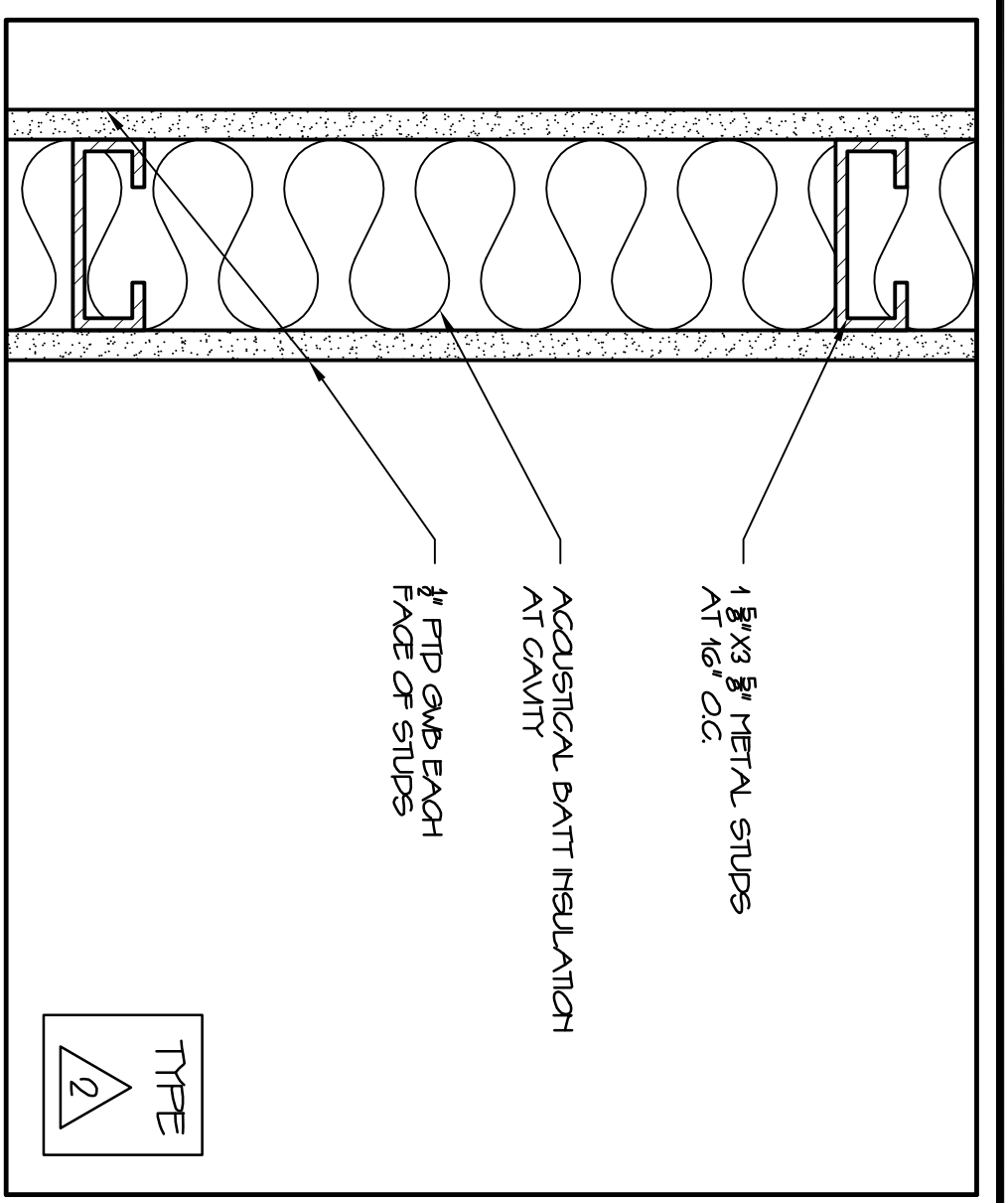
6 TYPICAL HTL DOOR JAMB HEAD SML 3'-4\"/>



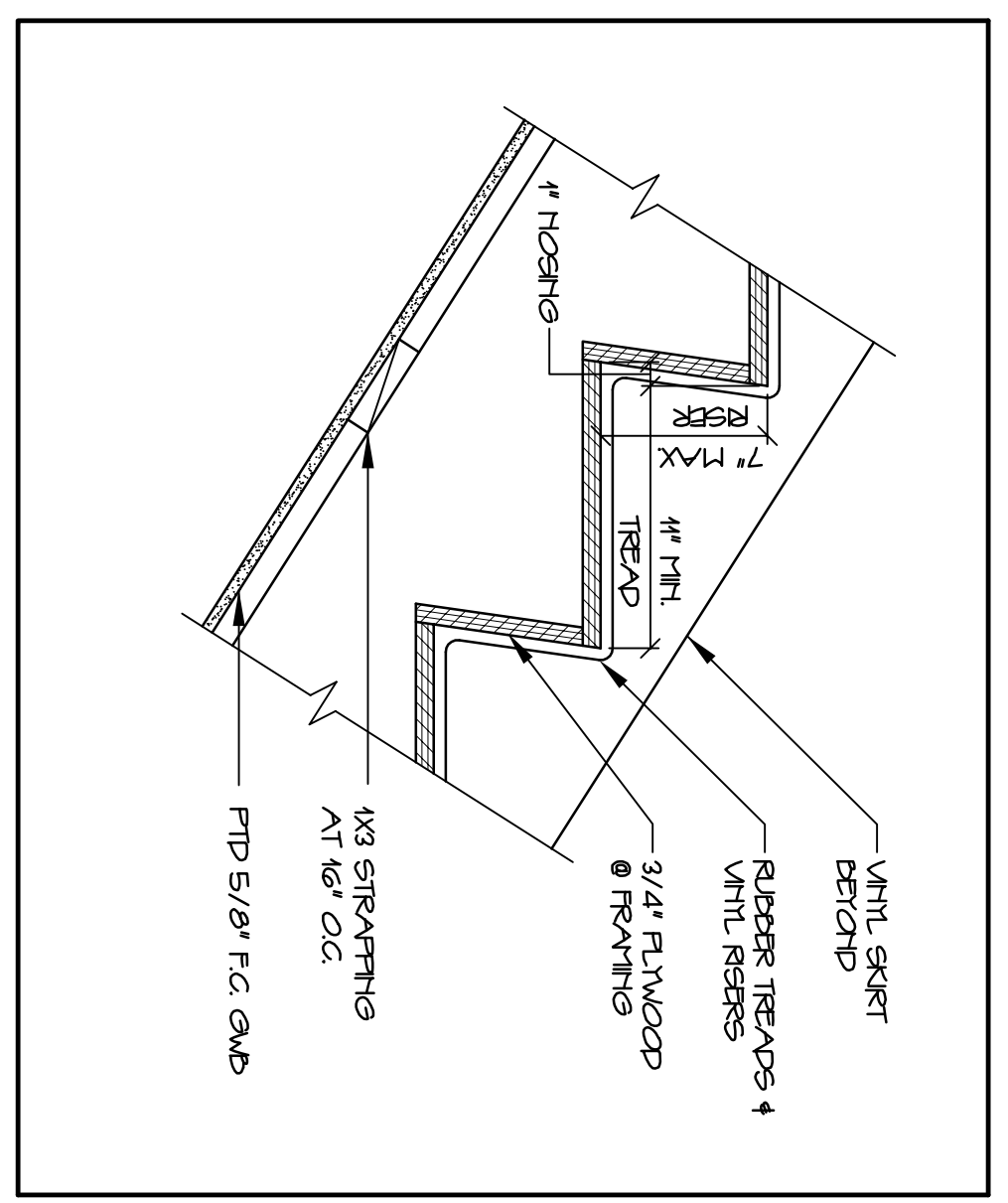
7 INTERIOR STUD FLANKING PARTITION 3'-4\"/>



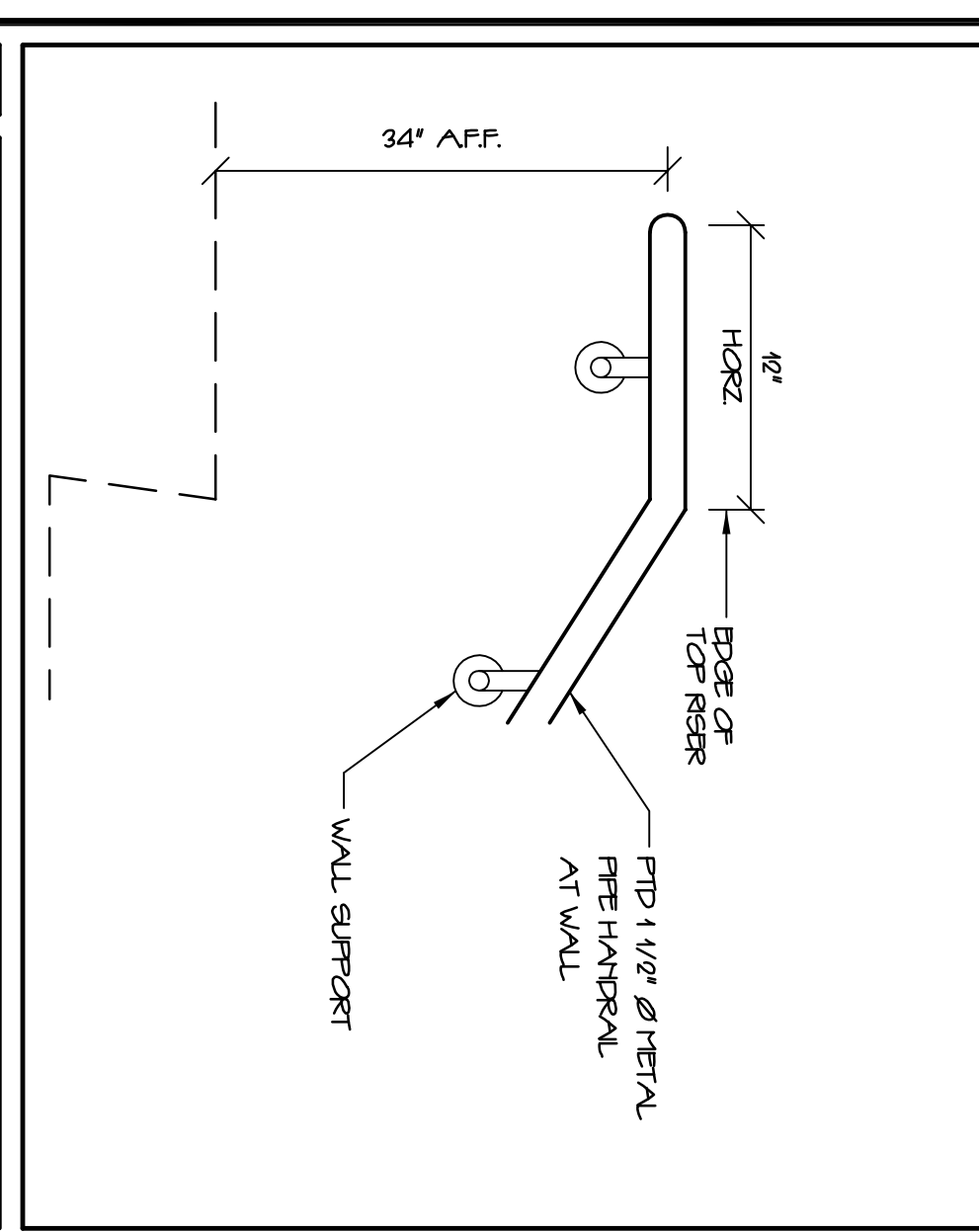
8 INTERIOR SILL DETAIL 3'-4\"/>



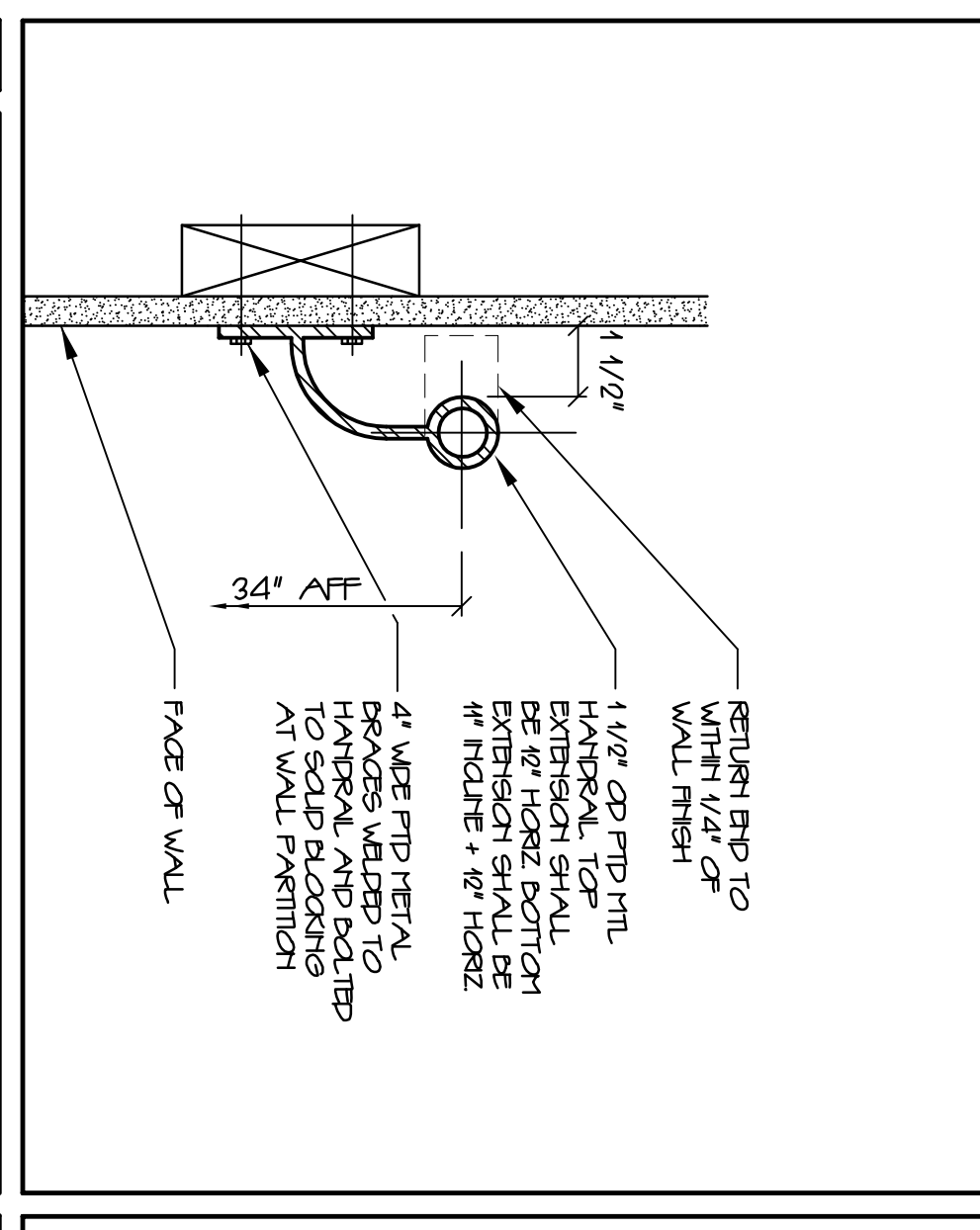
9 INTERIOR STUD PARTITION 3'-4\"/>



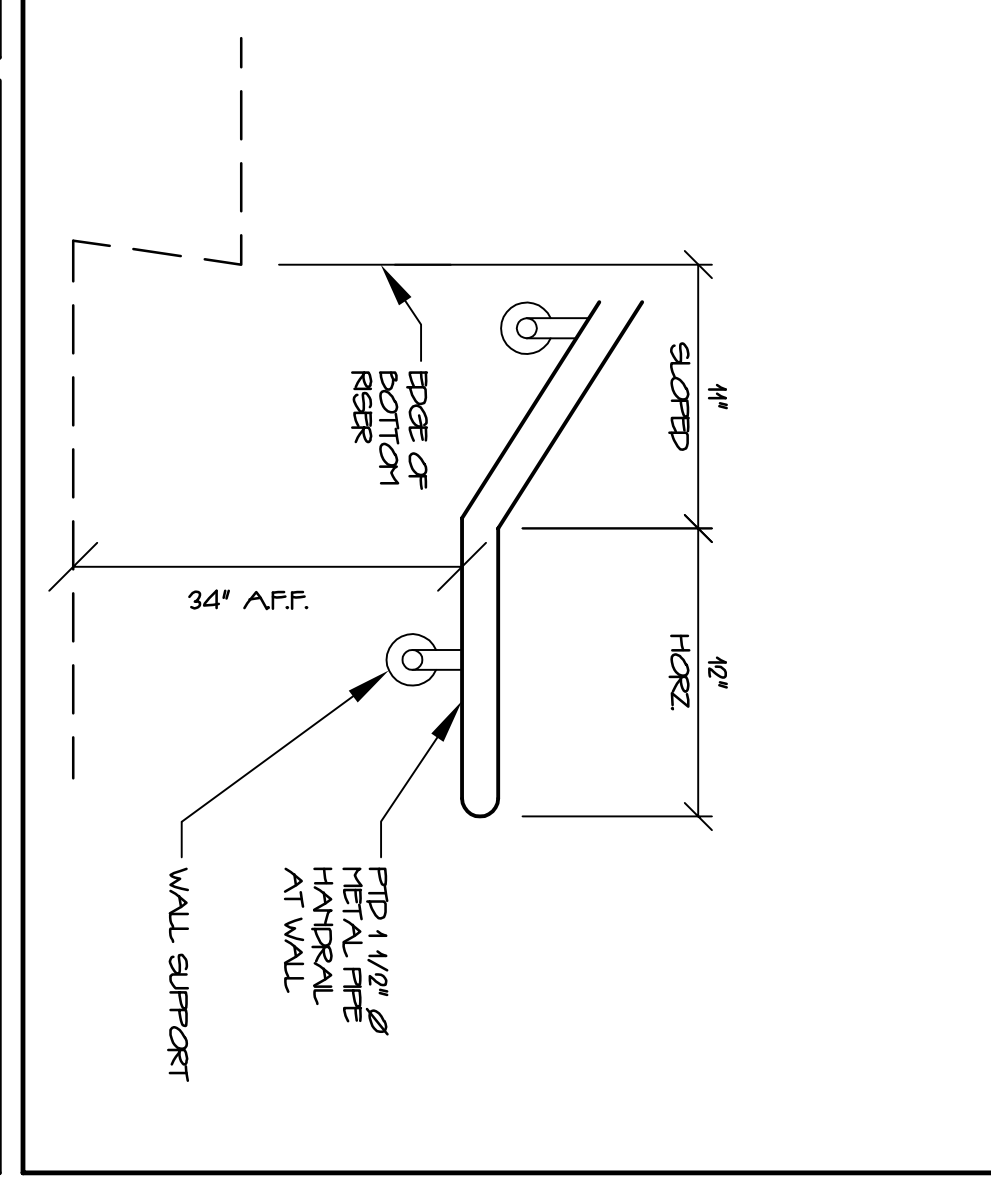
10 TYPICAL STAR DETAIL 1 1/2\"/>



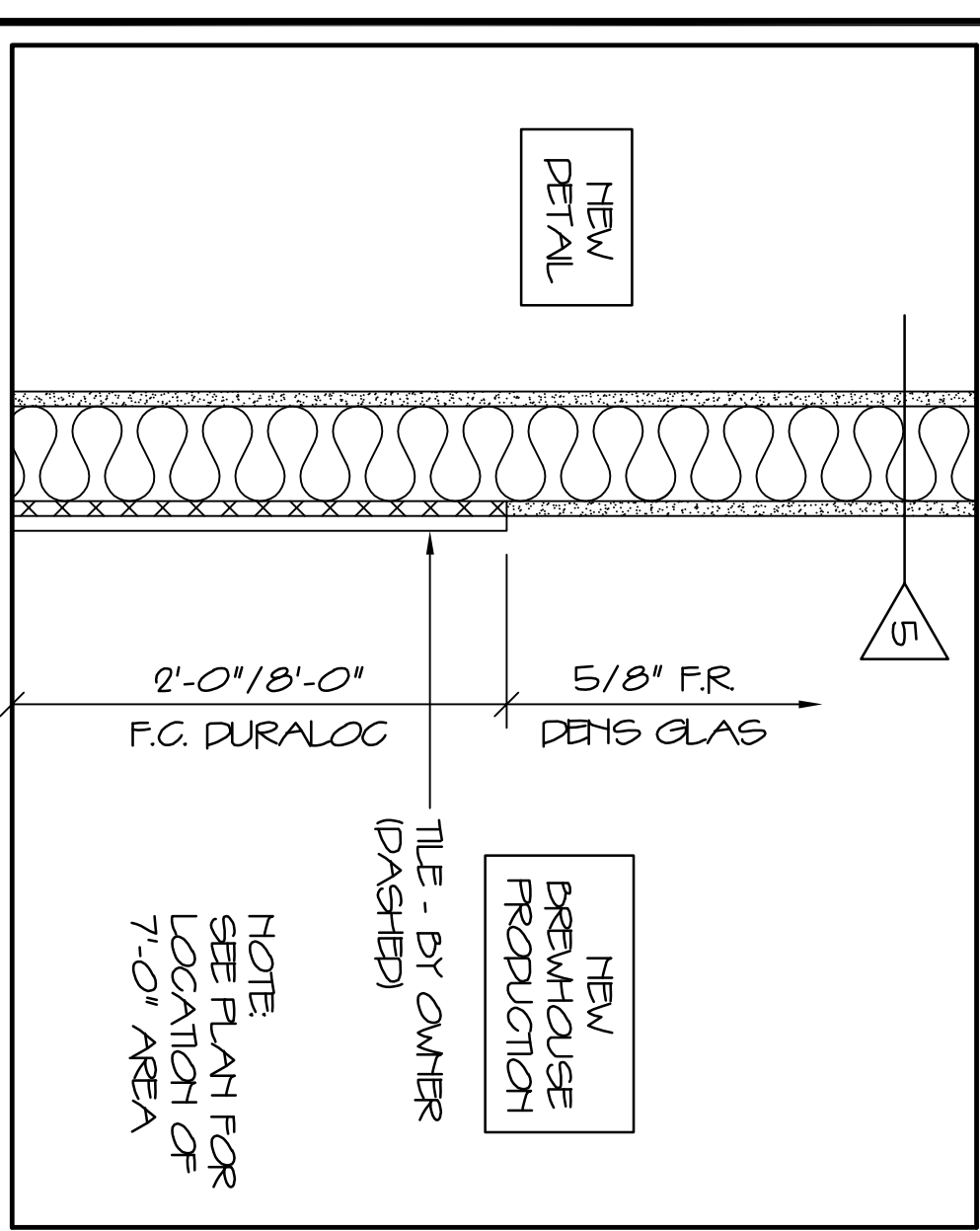
11 TYPICAL HTL - TOP 1 1/2\"/>



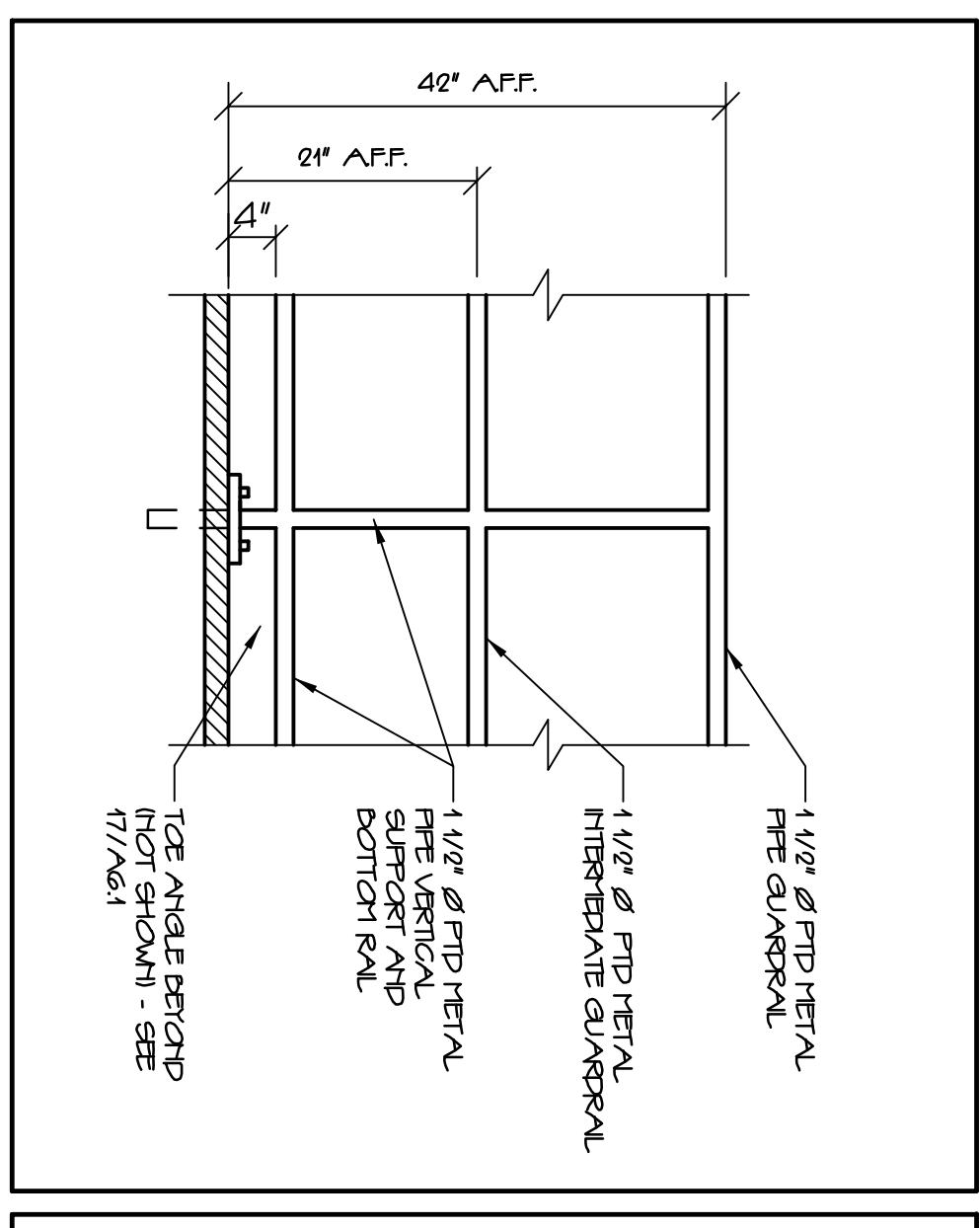
12 TYPICAL HTL SECTION 3'-4\"/>



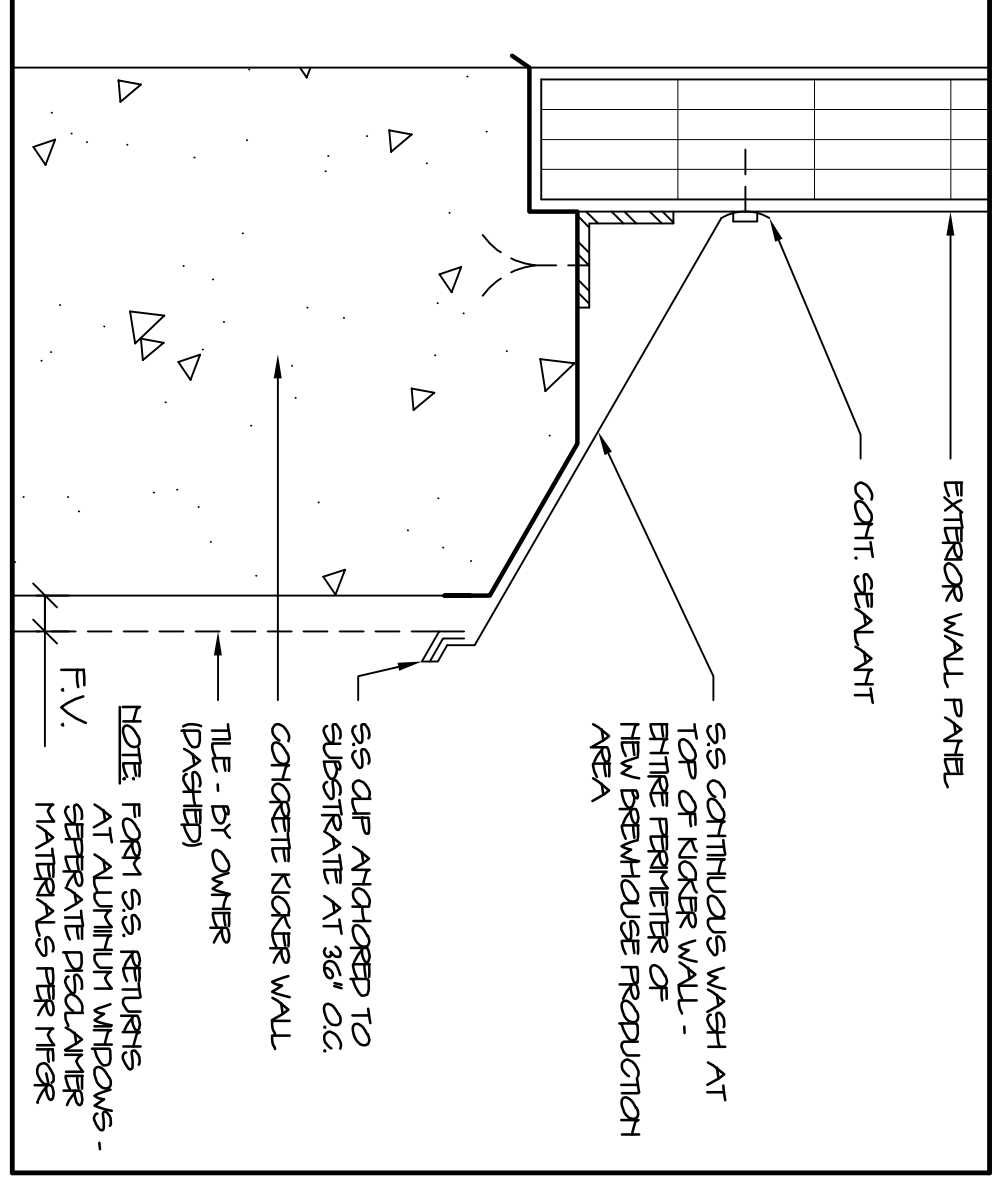
13 TYPICAL HTL - BOTTOM 1 1/2\"/>



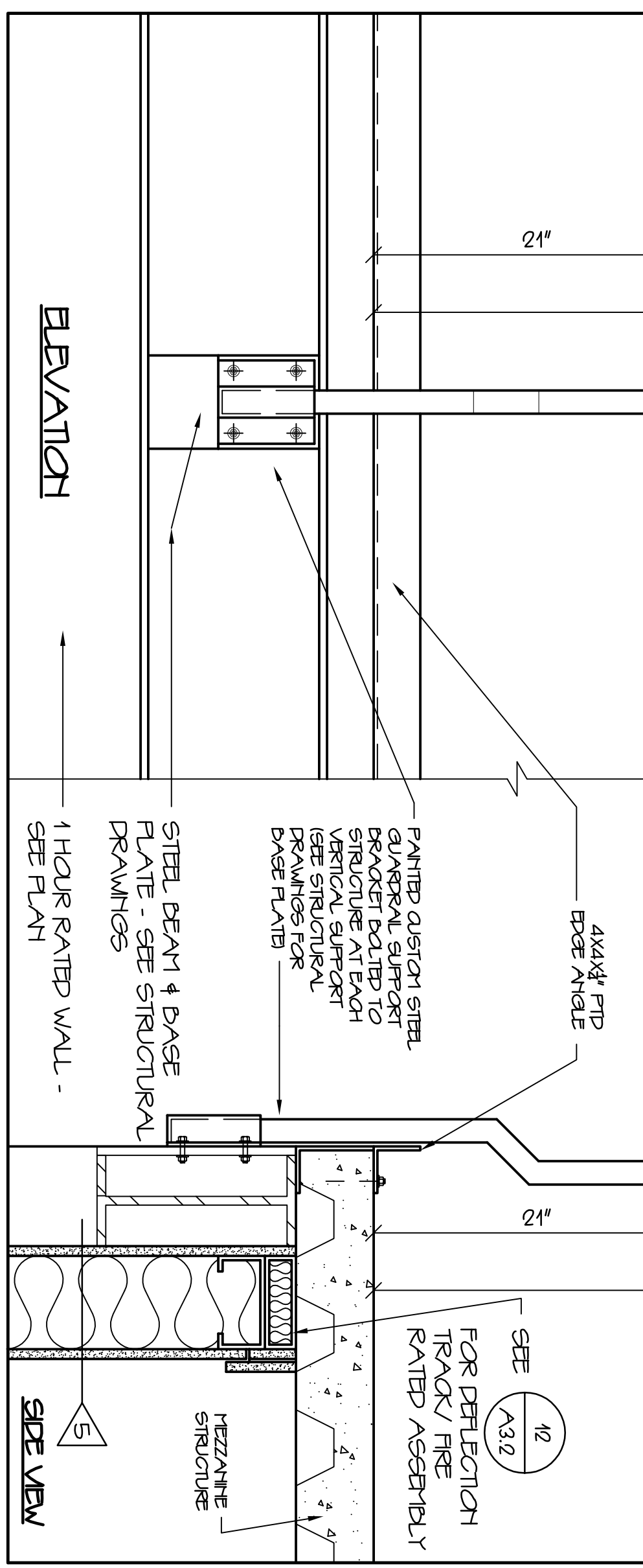
14 DURACORK BASE DETAIL 1'-4\"/>



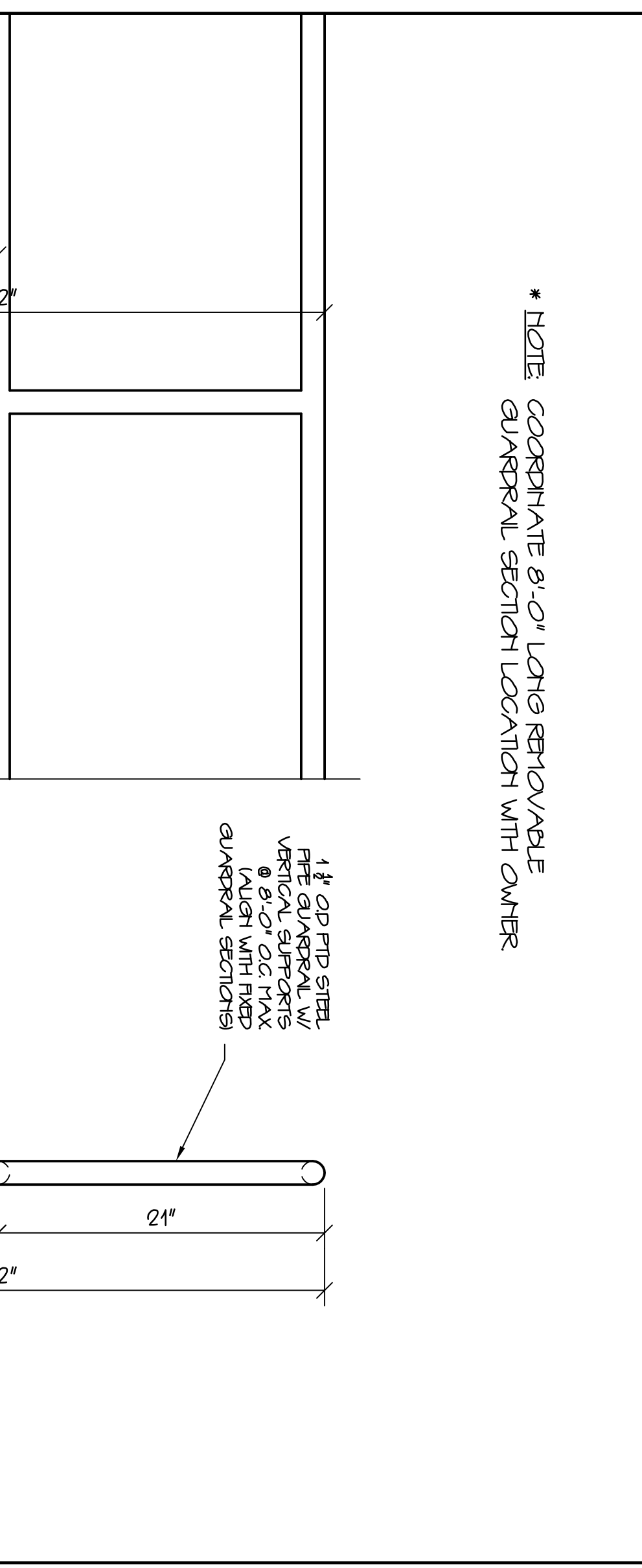
15 TYPICAL QUARRAL 3/4\"/>



16 SS WASH DETAIL AT BREWHOUSE 1 1/2\"/>



17 MEZZANINE QUARRAL - REMOVABLE SECTION DETAIL 1 1/2\"/>



18 MEZZANINE QUARRAL - REMOVABLE SECTION DETAIL 1 1/2\"/>

**GRANT HAYS ASSOCIATES**

ARCHITECTURE  
INTERIOR DESIGN  
P.O. BOX 6179 FALMOUTH, MAINE 04105  
(207) 871-5900 (207) 871-9308

NEW ADDITION FOR  
**ALLAGASH BREWING CO.**  
50 INDUSTRIAL WAY PORTLAND, MAINE

REVISIONS

SCALE AS NOTED  
DATE 10 SEPT. 12  
DRAWN BY HPH/SAM  
JOB NO. 140701  
DRAWING NO. **A6.1**

DETAILS

DRAWING TITLE

JOB TITLE