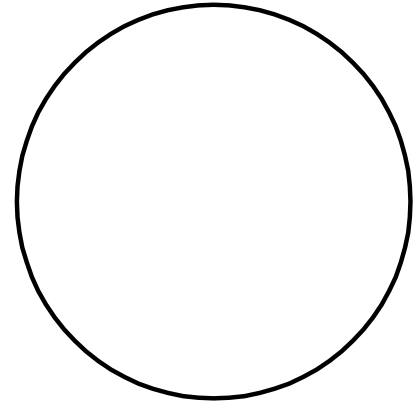


REPRODUCTION OR USE OF THIS DOCUMENT WITHOUT WRITTEN PERMISSION OF GRANT HAYS ASSOCIATES IS PROHIBITED.



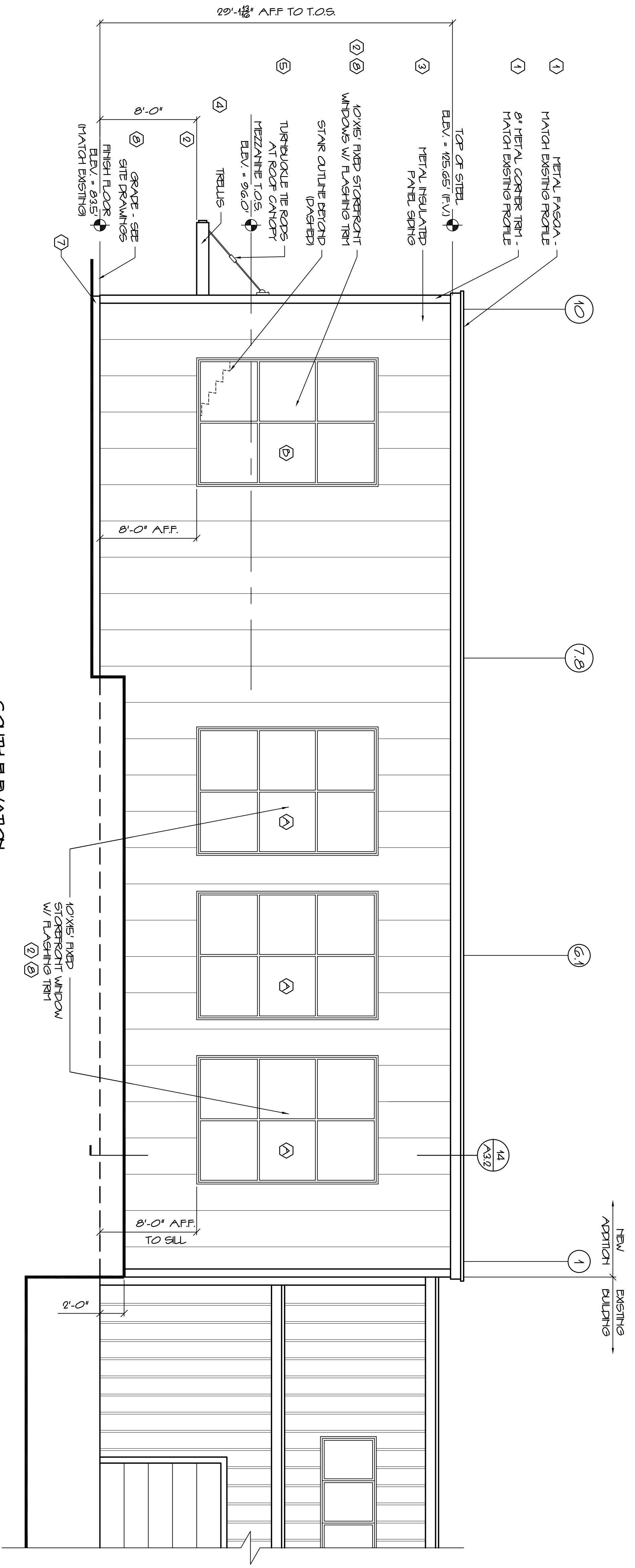
REVISIONS

NEW ADDITION FOR
ALLAGASH BREWING CO.
 50 INDUSTRIAL WAY PORTLAND, MAINE
 JOB TITLE

ARCHITECTURE
 INTERIOR DESIGN
 P.O. BOX 6179 FALMOUTH, MAINE 04105
 TELEPHONE (207) 871-5900 FACSIMILE (207) 871-9308

ADDITION
 EXTERIOR
 ELEVATIONS
 DRAWING TITLE

SCALE AS NOTED
 DATE 10 SEPT. 12
 DRAWN BY GAY/TFH
 JOB NO. 120701
 DRAWING NO.
A2.2



SOUTH ELEVATION
 SCALE: 3/16" = 1'-0"

TAG	COLOR
1	LIGHT BRONZE
2	TILL ALUMINUM
3	LIGHT STONE
4	*RUSTY STEEL
5	*GALVANIZED STEEL & ROUGH TRIPPER
6	TILL ALUMINUM
7	CONCRETE
8	LIGHT BRONZE
9	BLUE
12	(RESERVED)

COLOR SCHEDULE