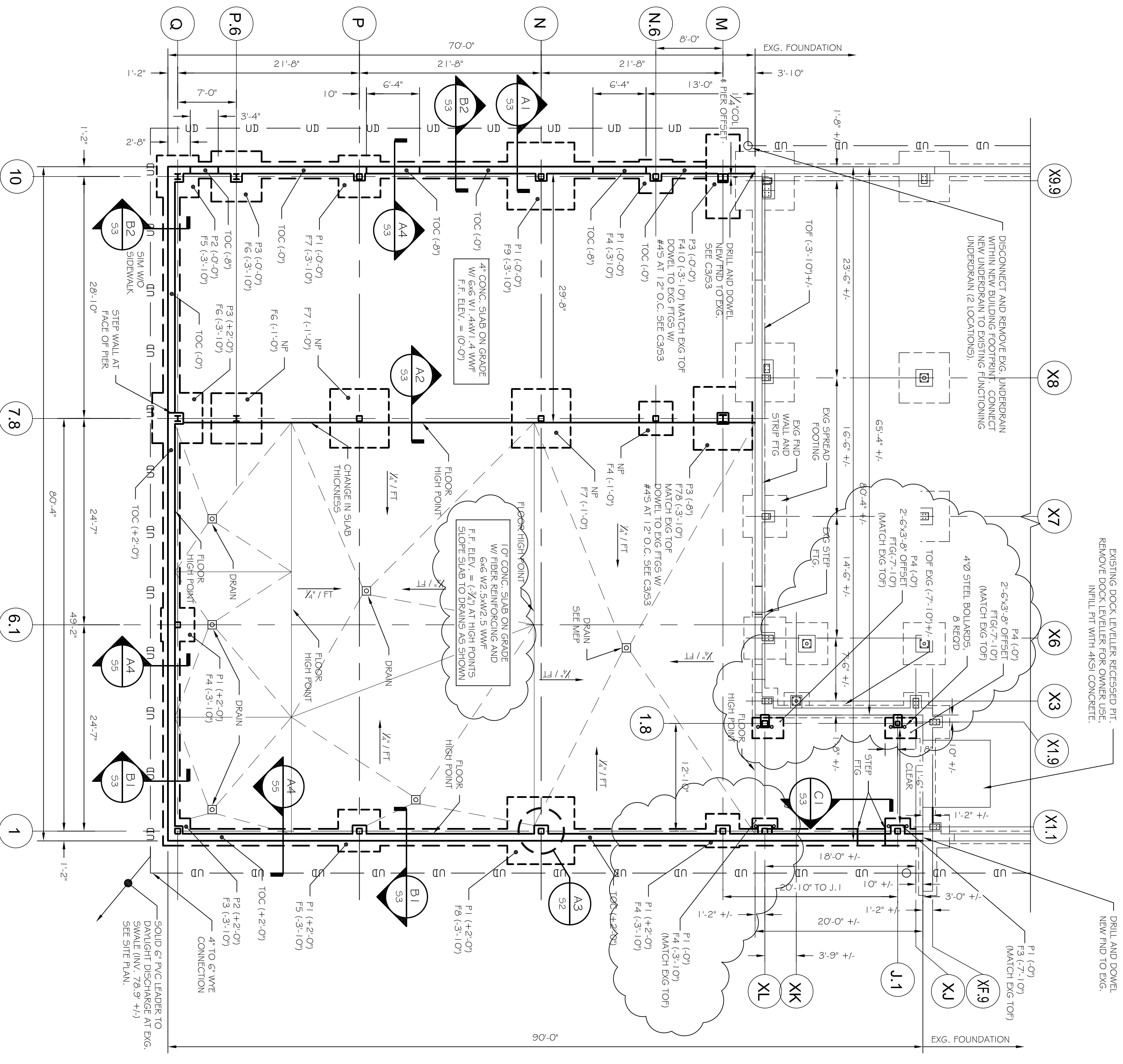


MARK	SIZE	FOOTING SCHEDULE
F2.5	2'-6" x 12"	(3) #5 S.E.W.
F3	3'-0" x 12"	(4) #5 S.E.W.
F4	4'-0" x 12"	(5) #5 S.E.W.
F4.0	4'-0" x 10" x 1'-6"	(7) #5 S.W. (20) #5 S.W.
F5	5'-0" x 12"	(6) #5 S.E.W.
F6	6'-0" x 14"	(10) #5 S.E.W.
F7	7'-0" x 14"	(12) #5 S.W. (12) #5 S.W.
F8	8'-0" x 14"	(12) #5 S.E.W.
F9	9'-0" x 14"	(14) #5 S.E.W.

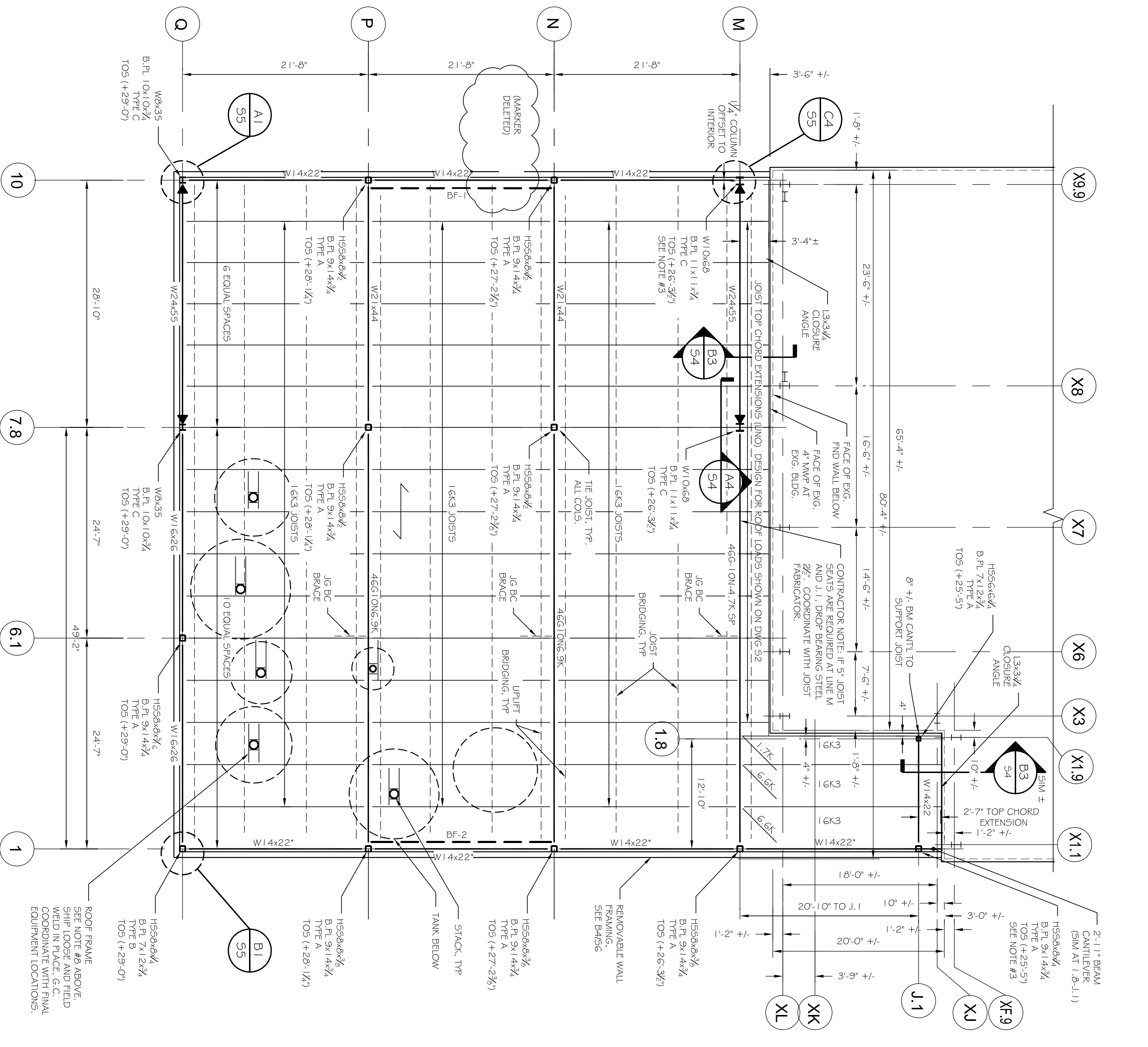
MARK	SIZE	PIER SCHEDULE
P1	12x20"	SEE A3.2
P2	14x14"	SEE B3.2
P3	16x16"	SEE C3.2
P4	12x18"	SEE A3.2 SIM

- NOTES:
1. TOP INDICATES TOP OF FOOTING
  2. TOP OF CONCRETE AND TOP OF FOOTING ELEVATIONS ARE REFERENCED FROM FINISHED FLOOR ELEVATION = 100.51'
  3. TOP OF CONCRETE AND TOP OF FOOTING 40' PREPARED P.C. UNDERDRAN (SHOW SCHEMATICALLY)
  4. COORDINATE WITH SITE PLAN
  5. F.F. INDICATES FINISHED FLOOR
  6. APP. INC. RECOMMENDS CLEANOUTS AT EVERY OTHER CORNER OF FOUNDATION UNDERDRAN.
  7. SEE S2 FOR GENERAL NOTES & SPECIFICATIONS
  8. FOOTINGS ARE CENTERED ON COLUMN GRIDS, UNLESS OTHERWISE NOTED
  9. G.C. VERIFY REQUIRED WIDTH OF ALL FOUNDATION WALL BOUNDARIES FOR DOOR OPENINGS PRIOR TO CONSTRUCTION
  10. REMOVE (1) 2" x 2" x 1/2" METAL BRASS PLATE OR FRAMED OPENINGS THROUGH EXTERIOR BUILDING WALLS. SET DETAIL B2.55 AND B2.55.1
  11. REMOVE EXG. SIDEWALK AND SIGNIFICANT BLOCK RETAINING WALL WITHIN NEW BUILDING FOOTPRINT
  12. INSTALL KACHECH FLOORING THROUGHOUT NEW BREWERY PRODUCTION AREA (COL. LINES 1.1 TO 7.8). SLAB FINISHES VERTICAL DISTANCE BETWEEN HIGHLOW POINTS TO GRADE AND MORE THAN 1/2" IN 10 LINEAL FEET. COORDINATE WITH TILE MANUFACTURER (KACHECH) REQUIREMENTS.



W-BEAM	W-BEAM CONNECTION SCHEDULE	ALLOWABLE REACTION W/ 1/2\"/>
W24	W24	P = 56.4k
W21	W21	R = 46.3k
W18	W18	R = 36.3k
W16	W16	P = 26.1k
W14, W12	W14, W12	R = 16.3k
W10, W8	W10, W8	R = 6.2k

- FRAMING NOTES:
1. SEE S2 FOR GENERAL DESIGN NOTES
  2. SIGNED AND SEALED IN DIRECTION OF 1/2" x 26GA TYPE B PAINTED ROOF DECK. 3/8" RUIDLE WELOS IN 3/4" PATTERN, (1) #10 TEK
  3. TOP (+x-y) INDICATES TOP OF BEARING STEEL, REFERENCED FROM FIN. FIRST FLOOR ELEVATION 0'-0" = 100.51'. TOP OF BEARING STEEL DESIGNATED AT COLUMN CENTRELINE TYPICAL, UNLESS NOTED OTHERWISE (UNO). CONTRACTOR VERIFY TOS AT LINES J.1 AND M TO MATCH EXISTING ROOF HEIGHT AND SLOPE.
  4. (1) INDICATES BEAM INSTALLED AT OPEN WEB JOIST HEIGHT.
  5. SEE S2 FOR BEARING AND MOMENT CONNECTIONS.
  6. (1) INDICATES BEAM INSTALLED AT OPEN WEB JOIST HEIGHT.
  7. (1) INDICATES BEAM INSTALLED AT OPEN WEB JOIST HEIGHT.
  8. ALL ANGLES AT HVAC, ROOF PENETRATIONS TO BE 14x4x1/2". CONTRACTOR VERIFY CLEARANCES FOR SHOP FABRICATED FRAMES WITH ACTUAL HVAC UNIT/EQUIPMENT PURCHASED PRIOR TO FABRICATION. ALL ANGLES AT ROOF PENETRATIONS/HVAC UNITS TO BE SHIPPED LOOSE AND FIELD INSTALLED AFTER HVAC FRAMES ARE ON SITE. ALL ANGLES AT HVAC FRAMES / THE STACOS TO BE ORIENTED WITH HORIZONTAL LEGS FACING AWAY FROM ADJACENT DUCT OPENINGS.
  9. ALL WOOD IN CONTACT WITH CONCRETE TO BE PRESSURE TREATED.
  10. ALL FASTENERS IN FR LUMBER TO BE HOT DIPPED 690 GALVANIZED.
  11. ALL FASTENERS IN FR LUMBER TO BE HOT DIPPED 690 GALVANIZED.
  12. CONTRACTOR VERIFY ALL DIMENSIONS NOTED (+/-).
  13. SEE S4 FOR BRACE FRAME ELEVATIONS.
  14. ALL STRUCTURAL STEEL TO BE FRIMED (GREEN) AND PREPARED FOR PAINT. SEE SPECS FOR PAINTING REQUIREMENTS.



A2 FOUNDATION PLAN  
SCALE: 1/8" = 1'-0"

A1 ROOF FRAMING PLAN  
1/8" = 1'-0"

NO.	BY	DESCRIPTION	DATE
1	ASW	ADDENDUM #1	9/25/12

PROJECT: **ALLAGASH BREWHOUSE ADDITION**  
INDUSTRIAL WAY, PORTLAND, MAINE  
FOR: ALLAGASH BREWING CO.

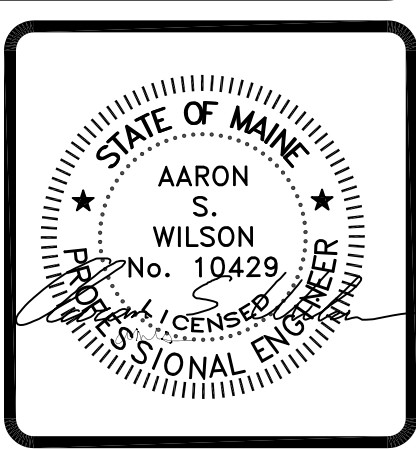
SHEET TITLE: **FOUNDATION AND ROOF FRAMING PLANS**  
ISSUED FOR PERMITTING

DATE: 9-17-12  
SCALE: 1/8" = 1'-0"  
DESIGN BY: ASW  
DRAWN BY: BSC  
PROJECT NUMBER: **12160-S1**  
FILE #: 12160-S1  
SHEET NO: **S1**

THE DRAWING DESIGN AND CONTENTS ARE THE PROPERTY OF ASSOCIATED DESIGN PARTNERS, INC. NO PART OF THIS DOCUMENT WITHOUT WRITTEN CONSENT IS PERMITTED.

**ASSOCIATED DESIGN PARTNERS INC.**

80 Leighton Road Falmouth, Maine 04105  
Office: (207) 878-1751  
Fax: (207) 878-1788  
E-Mail: [adp@adengineering.com](mailto:adp@adengineering.com)





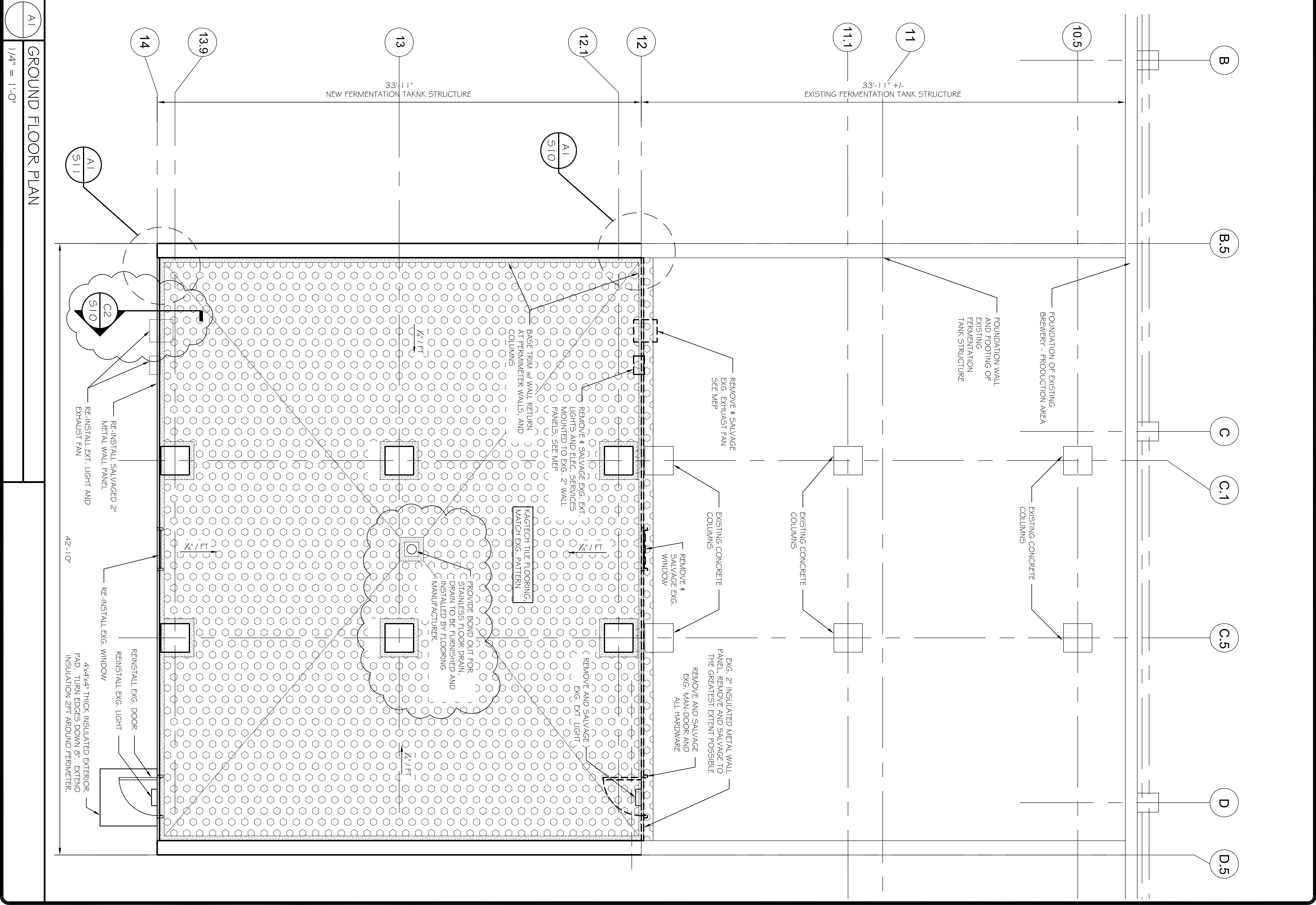
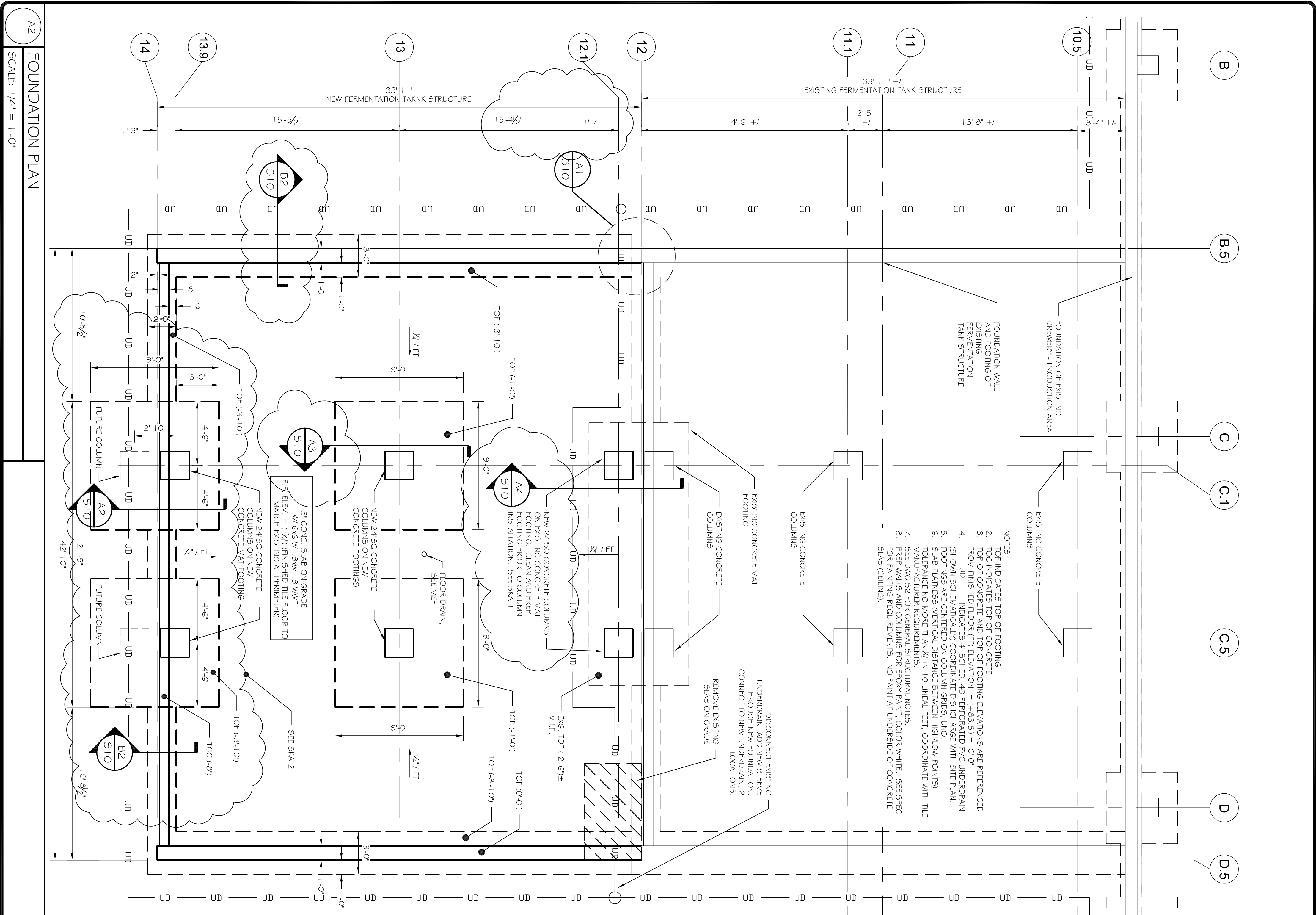












A2 FOUNDATION PLAN  
SCALE: 1/4" = 1'-0"

A1 GROUND FLOOR PLAN  
1/4" = 1'-0"

REVISIONS		
No.	BY	DATE
1	ASW	9/25/12
DESCRIPTION		
ADDENDUM #1		

PROJECT: **ALLAGASH BREWERY**  
**FERMENTATION SUPPORT STRUCTURE**  
 FOR: ALLAGASH BREWING CO, 50 INDUSTRIAL WAY, PORTLAND ME

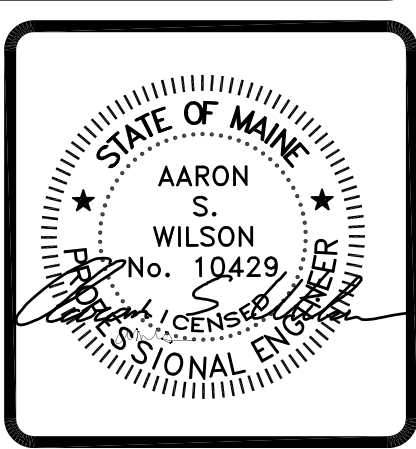
SHEET TITLE:  
**FOUNDATION AND FLOOR PLAN**  
**ISSUED FOR PERMITTING**

THE DRAWING, DESIGN AND  
 EXHIBITS ARE THE PROPERTY  
 OF ASSOCIATED DESIGN PARTNERS, INC.  
 NO PART OF THIS DOCUMENT IS TO BE  
 REPRODUCED OR TRANSMITTED IN ANY  
 FORM OR BY ANY MEANS, ELECTRONIC  
 OR MECHANICAL, INCLUDING PHOTOCOPYING,  
 RECORDING, OR BY ANY INFORMATION  
 STORAGE AND RETRIEVAL SYSTEM,  
 WITHOUT THE WRITTEN CONSENT OF  
 ASSOCIATED DESIGN PARTNERS, INC.

**ASSOCIATED DESIGN PARTNERS INC.**

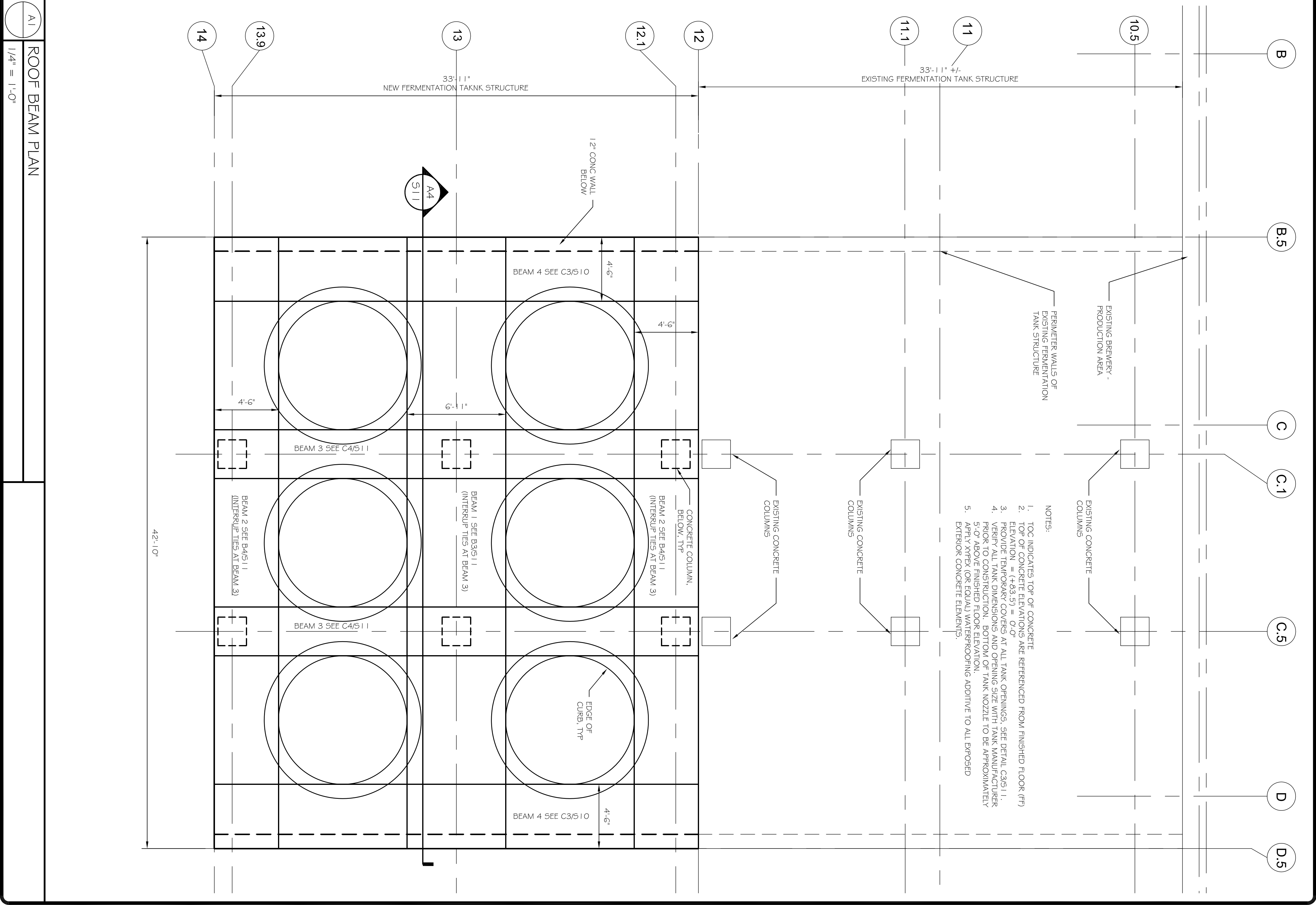
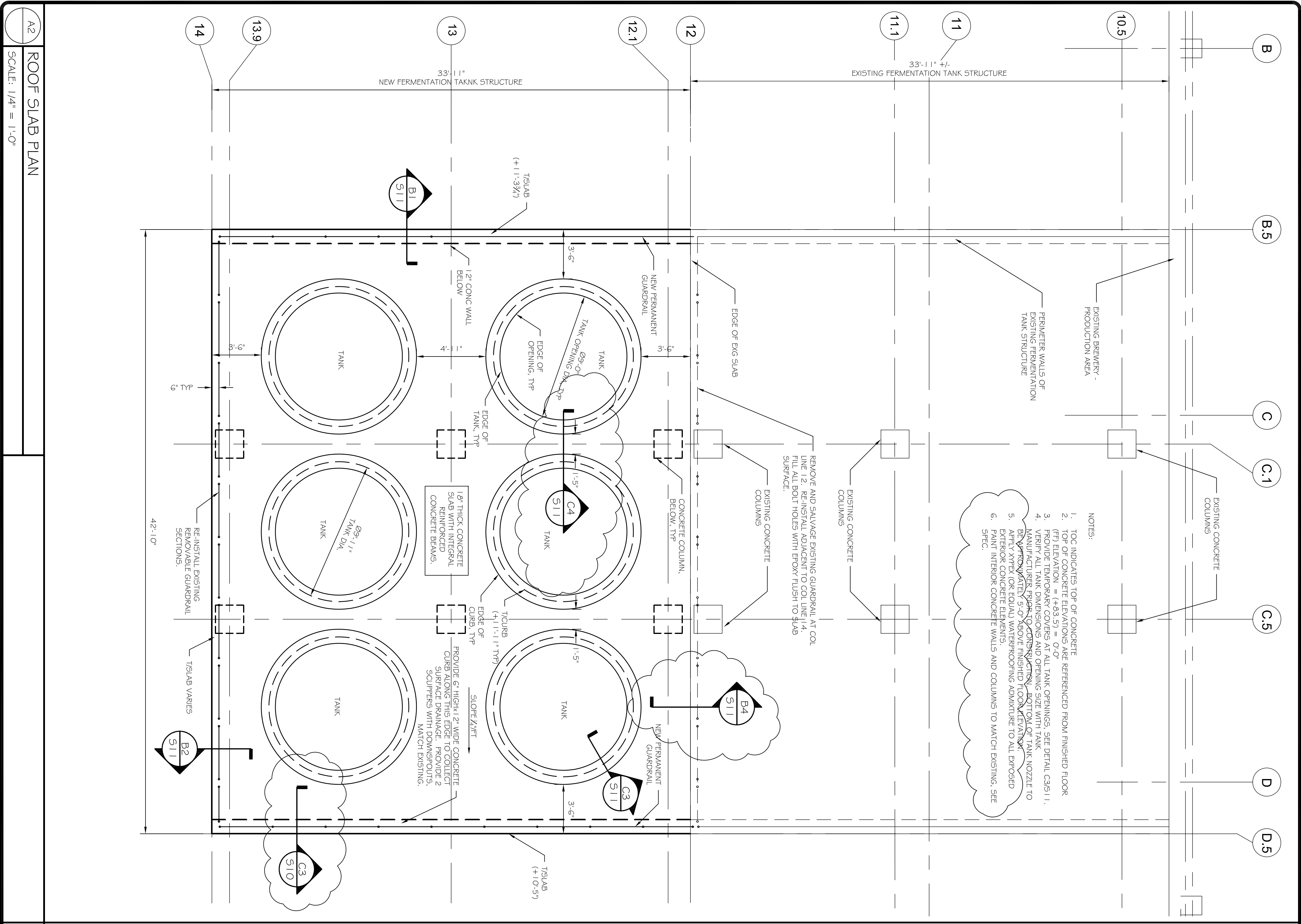
80 Leighton Road  
 Falmouth, Maine 04105

Office: (207) 878-1751  
 Fax: (207) 878-1788  
 E-Mail: [adp@adpengineering.com](mailto:adp@adpengineering.com)



DATE: 9-17-12  
 SCALE: AS NOTED  
 DESIGN BY: ASW  
 DRAWN BY: BSC  
 PROJECT NUMBER:  
**12248**  
 SHEET NO:  
**S8**





REVISIONS		
No.	BY	DATE
1	ASW	9/25/12
ADDENDUM #1		

PROJECT: **ALLAGASH BREWERY**  
**FERMENTATION TANK STRUCTURE**  
 FOR: ALLAGASH BREWING CO, 50 INDUSTRIAL WAY, PORTLAND ME

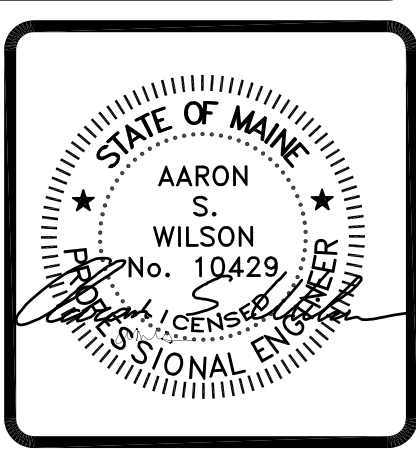
SHEET TITLE:  
**ROOF SLAB PLANS**  
**ISSUED FOR PERMITTING**

THE DRAWING DESIGN AND  
 PREPARED BY THE ENGINEER  
 OF ASSOCIATED DESIGN PARTNERS, INC.  
 IS HEREBY CERTIFIED TO BE IN  
 ACCORDANCE WITH THE REQUIREMENTS  
 OF 10-A M.R.S. § 651. Other use of this document without  
 written consent is prohibited.

**ASSOCIATED DESIGN PARTNERS INC.**

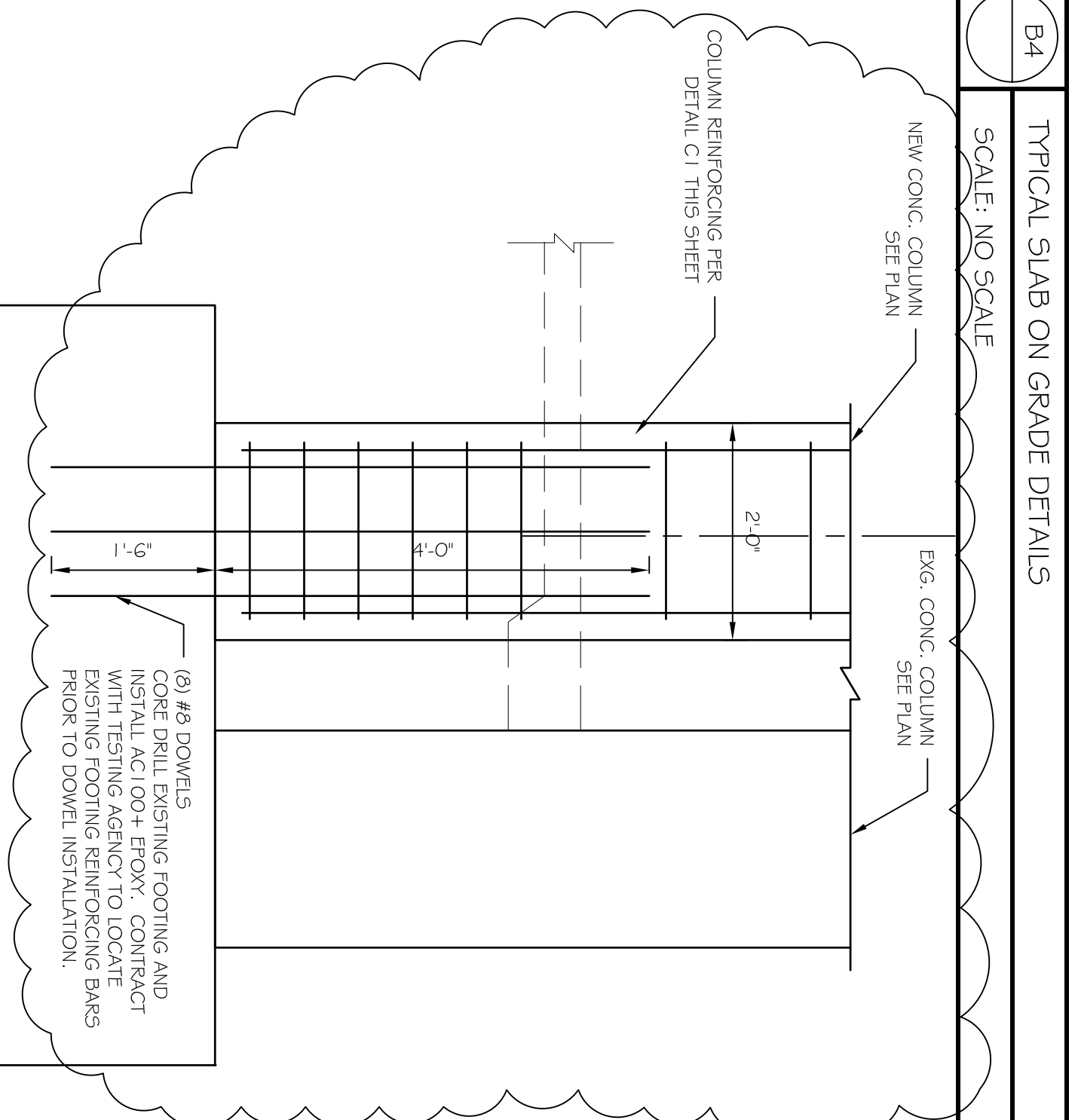
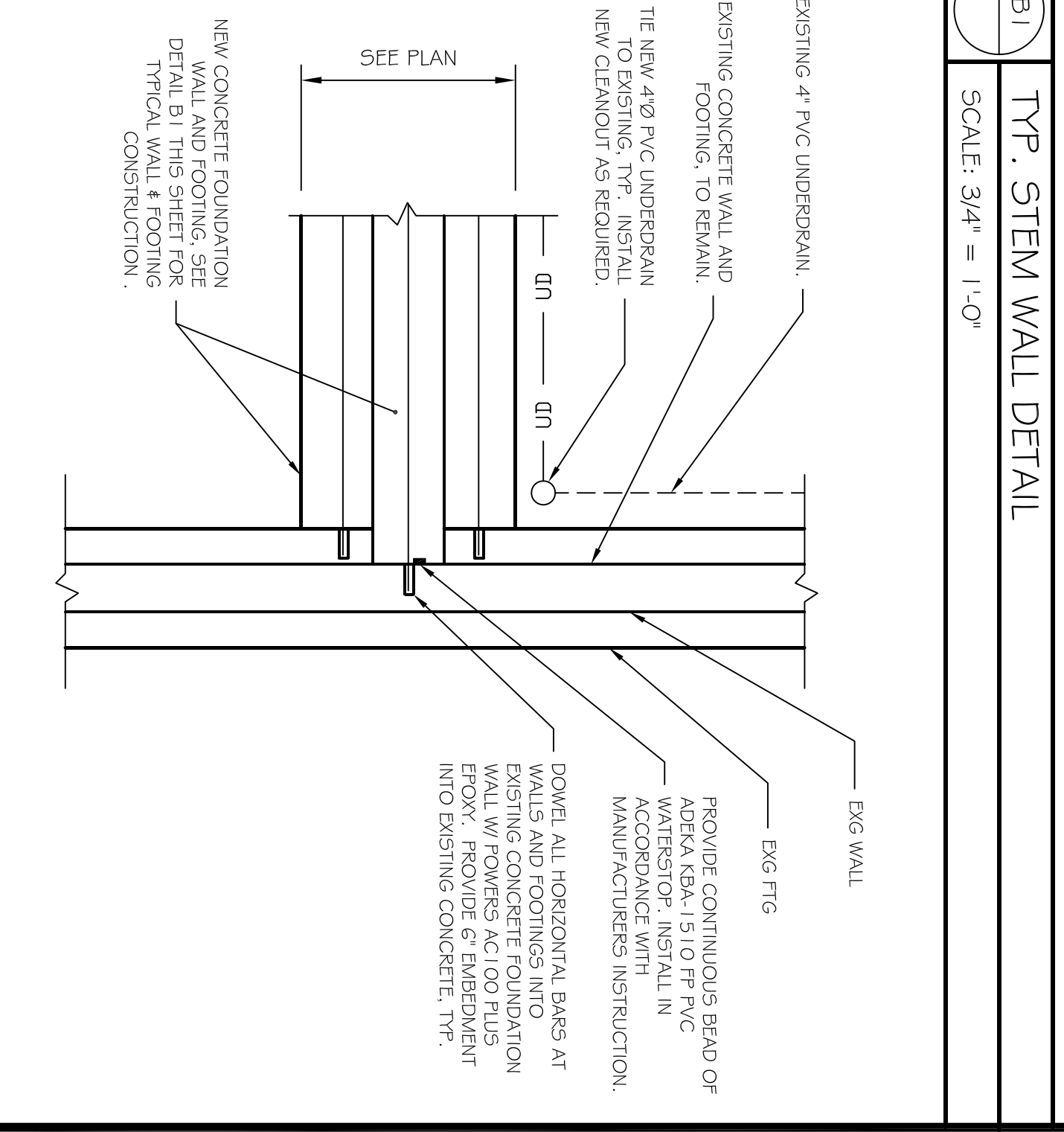
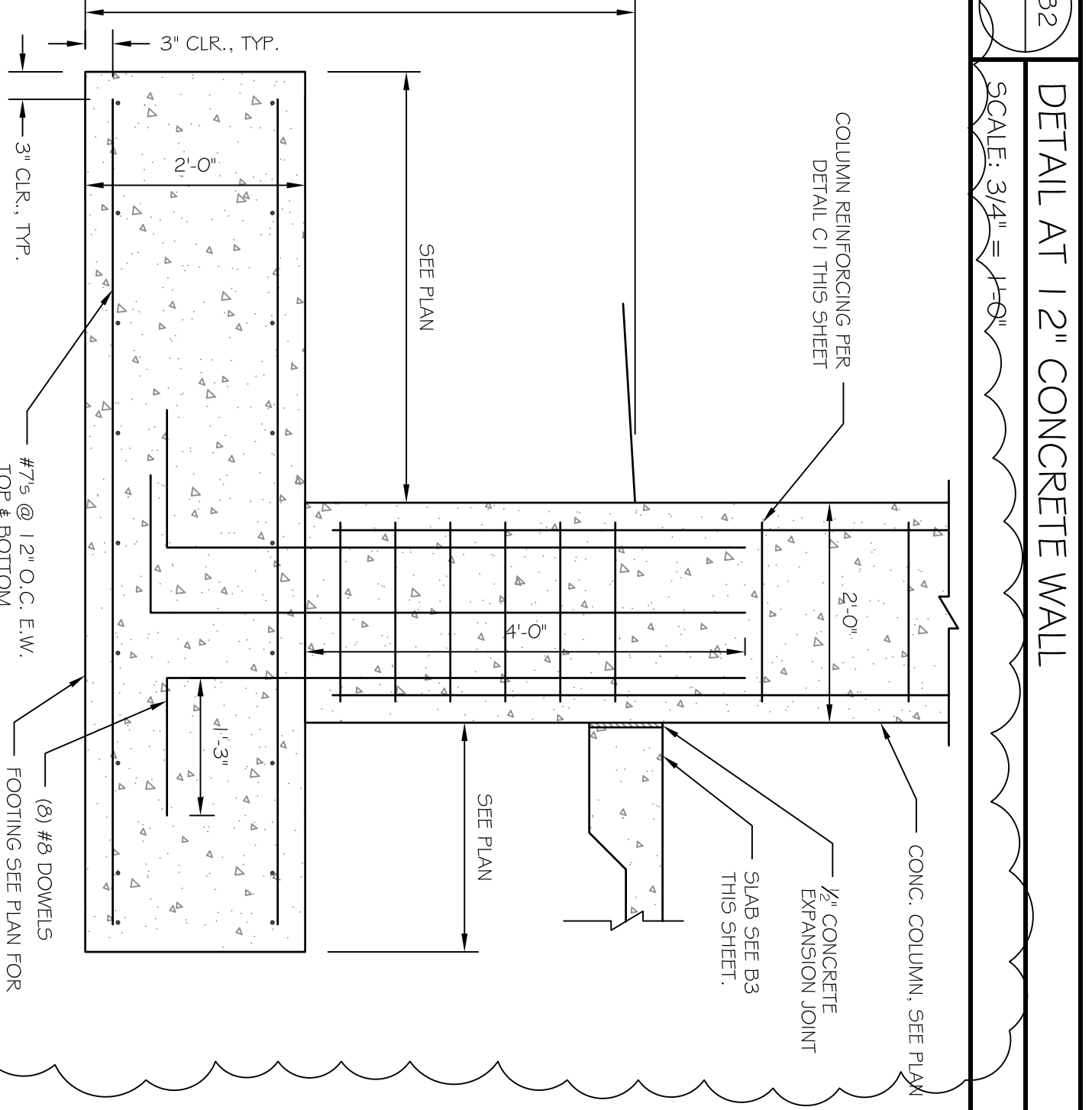
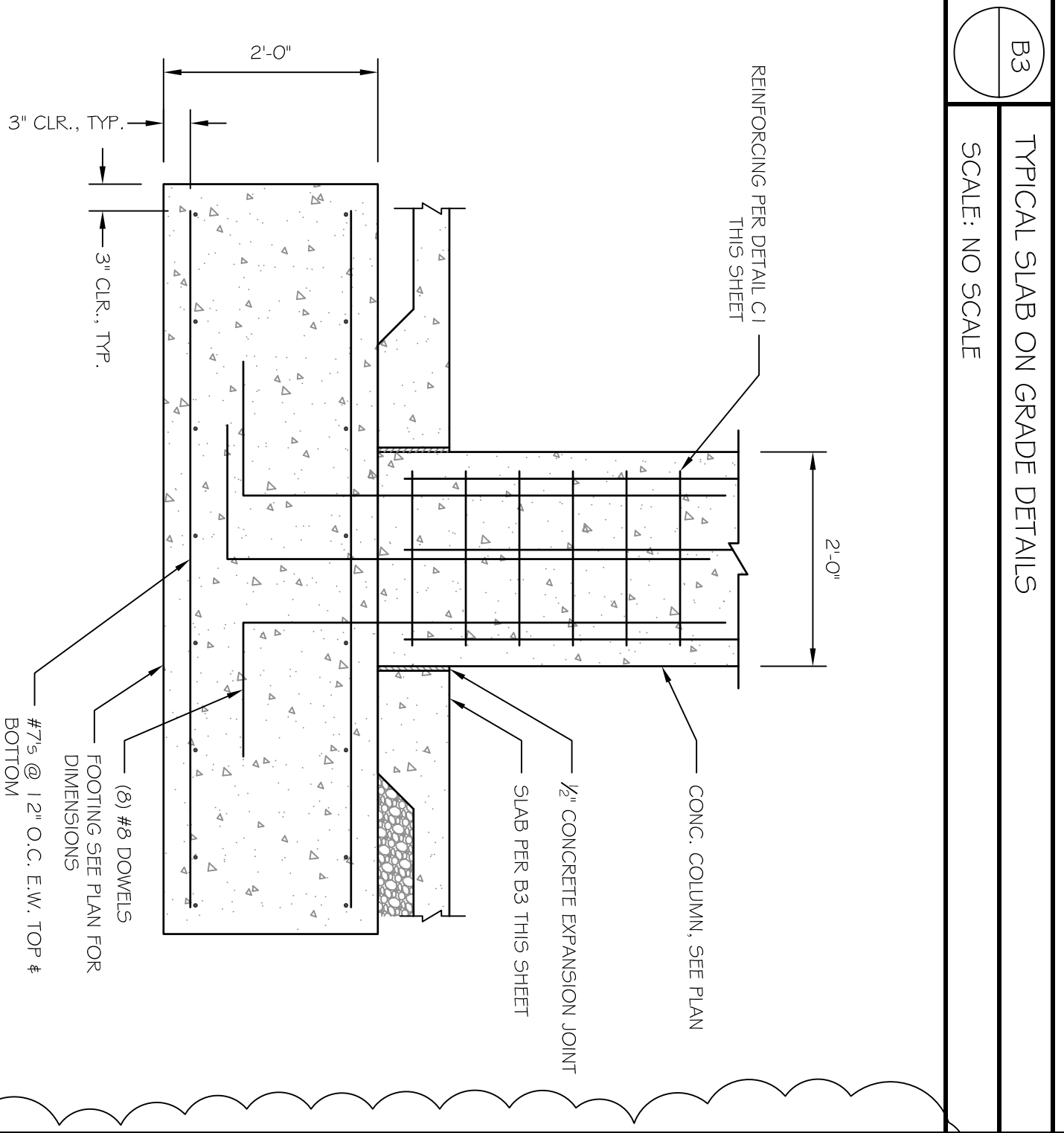
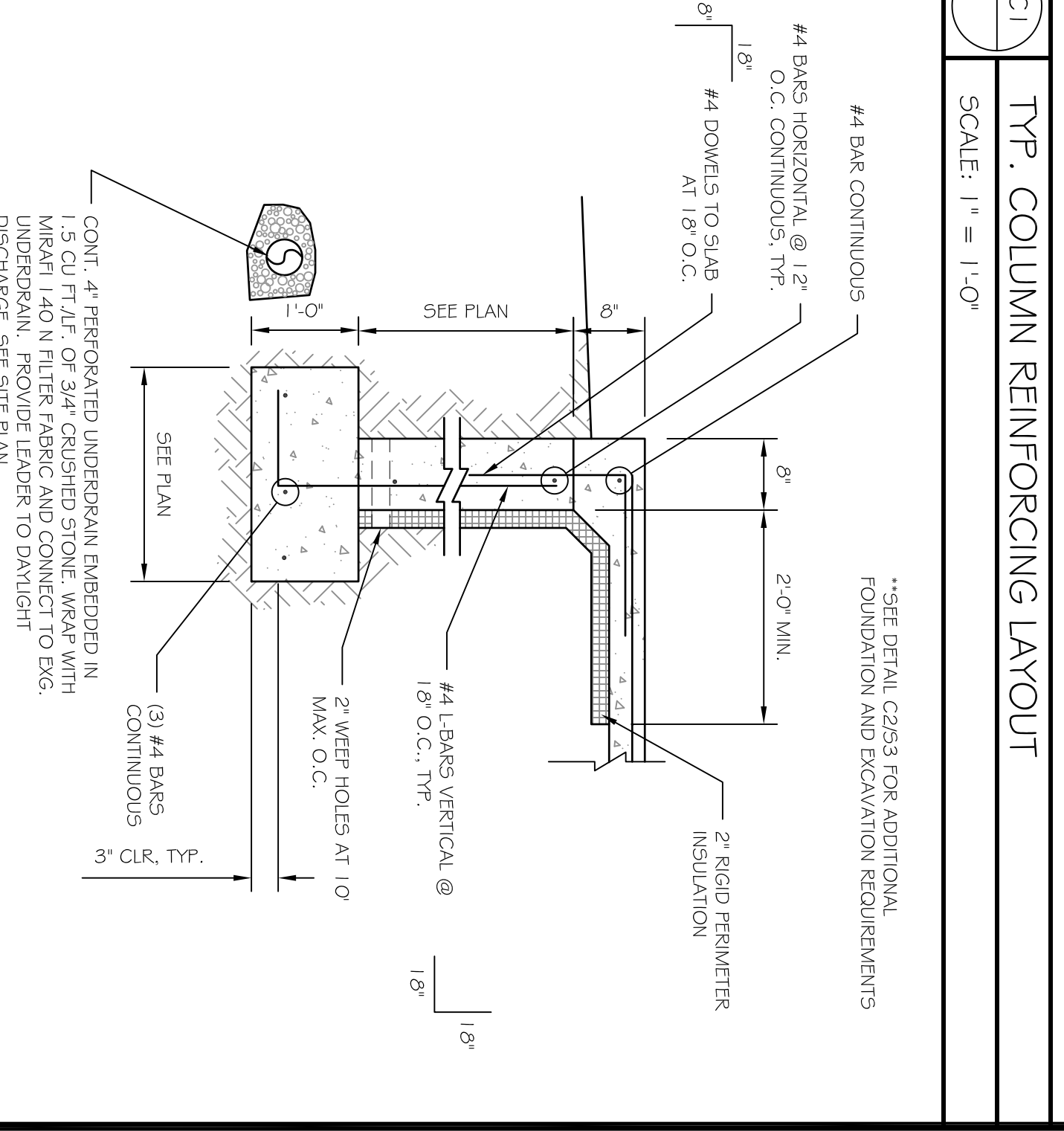
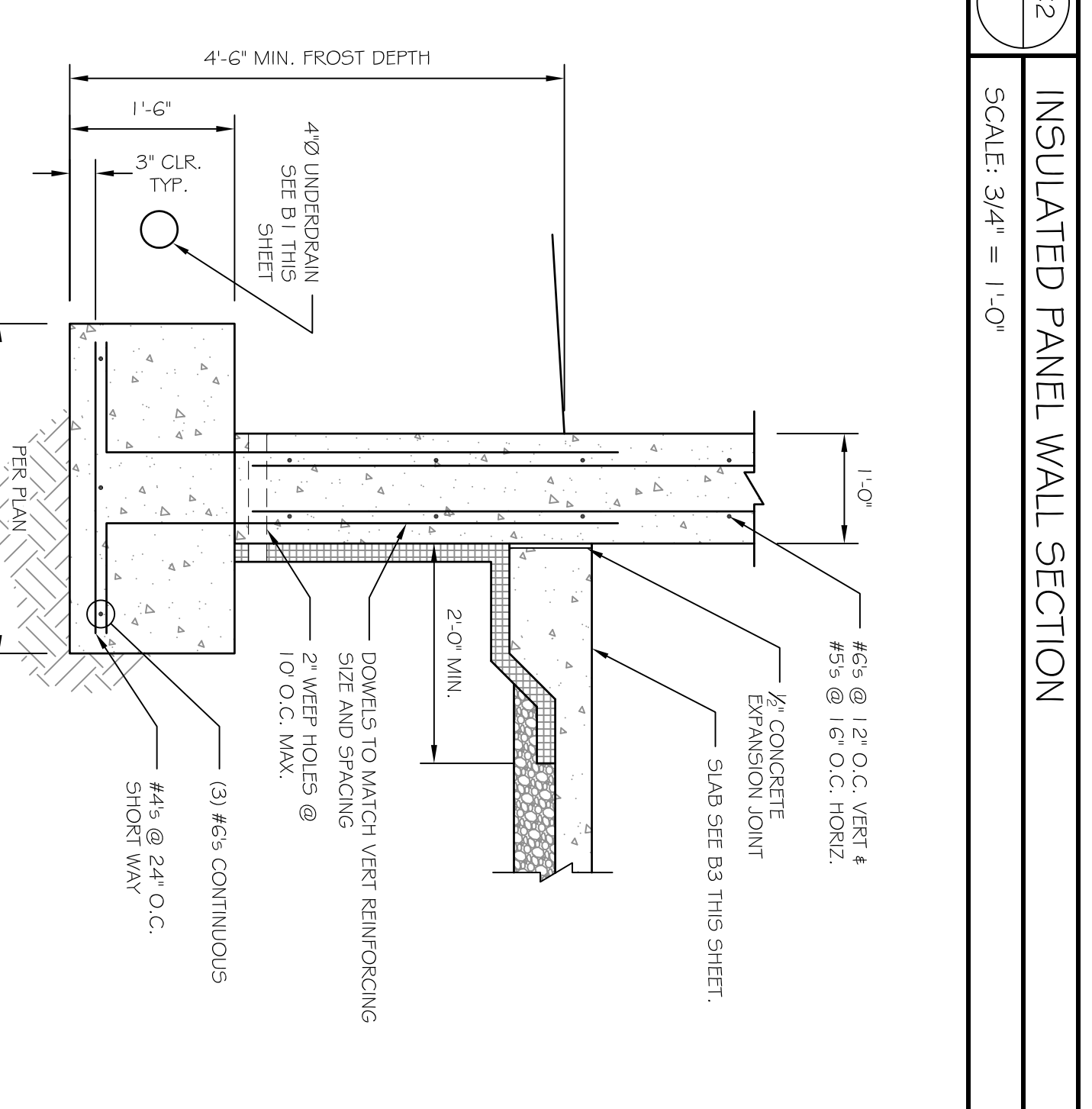
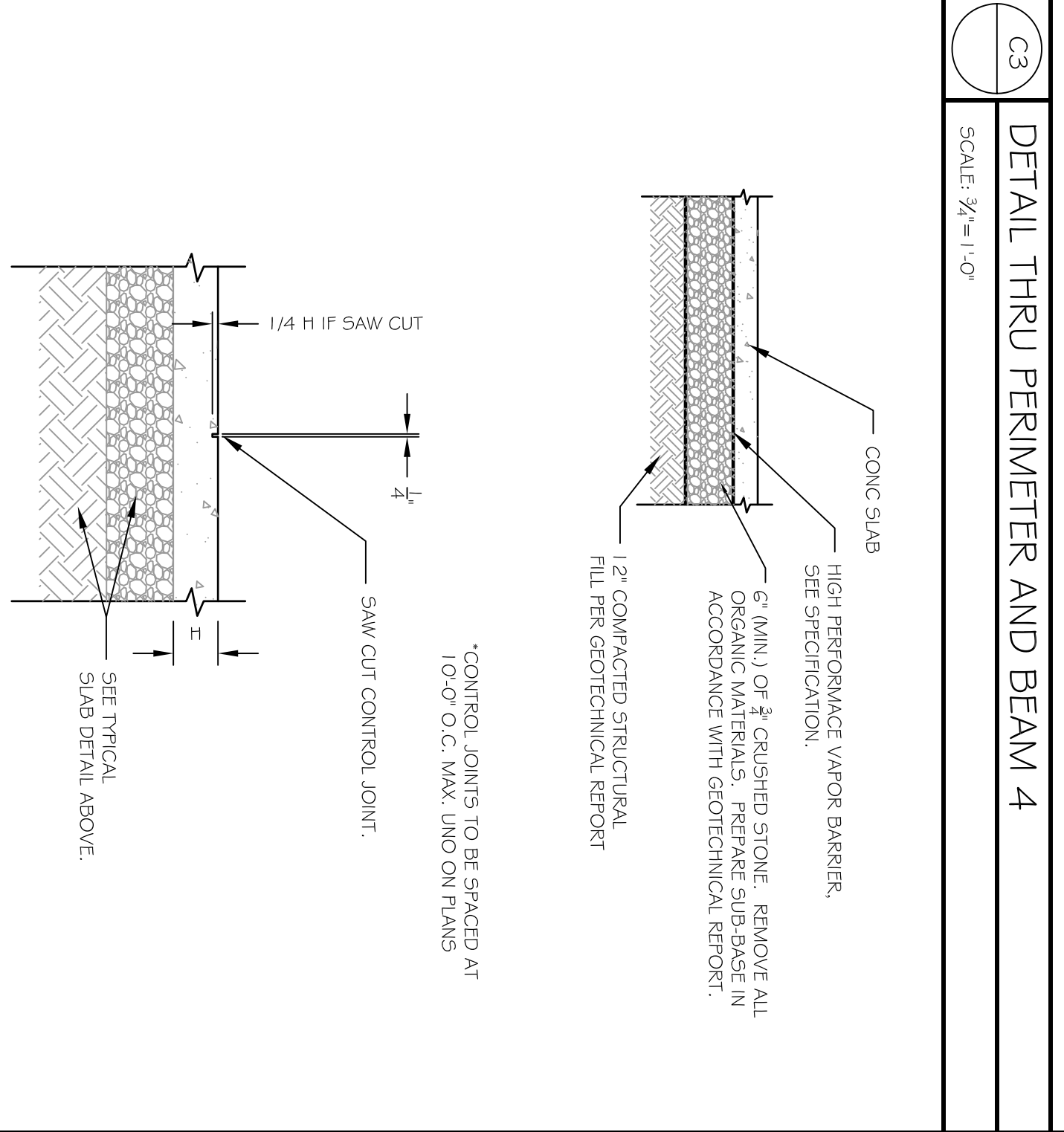
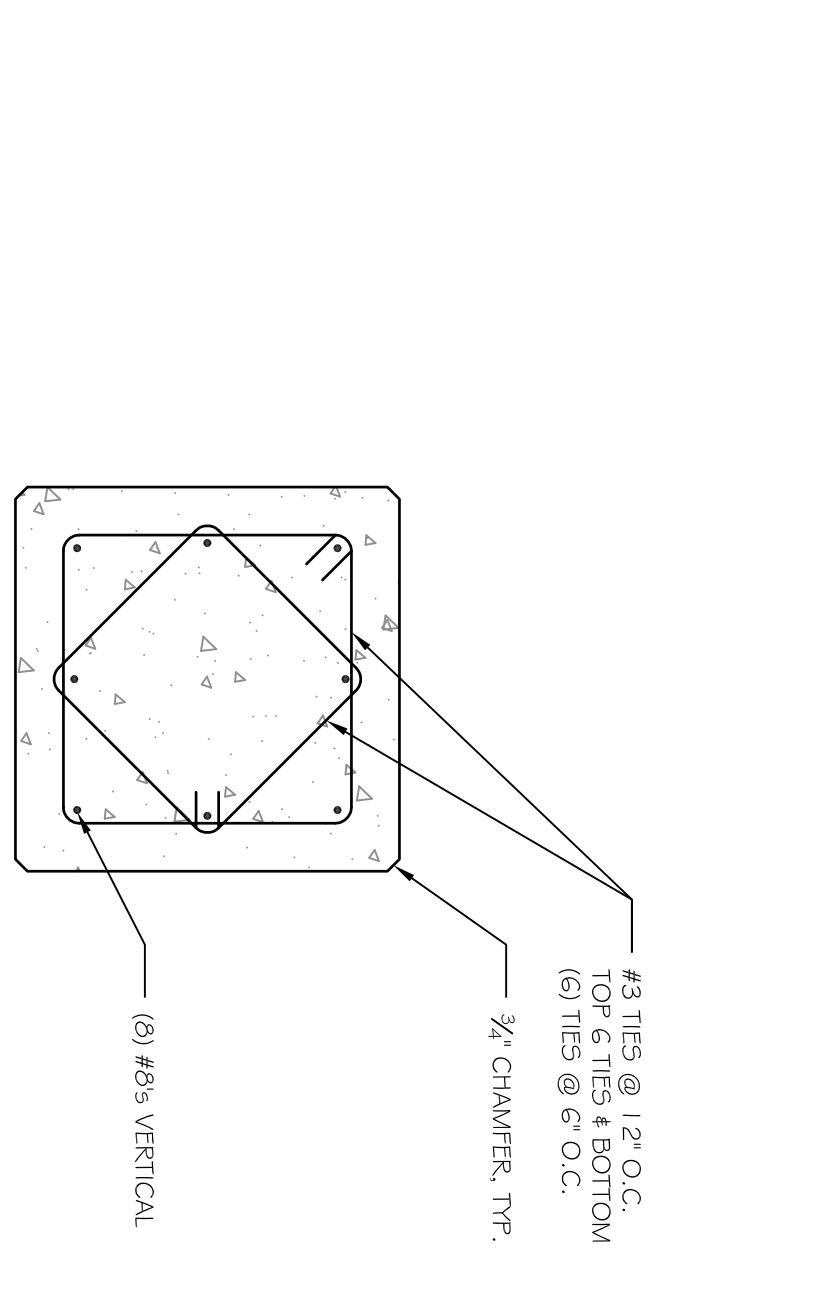
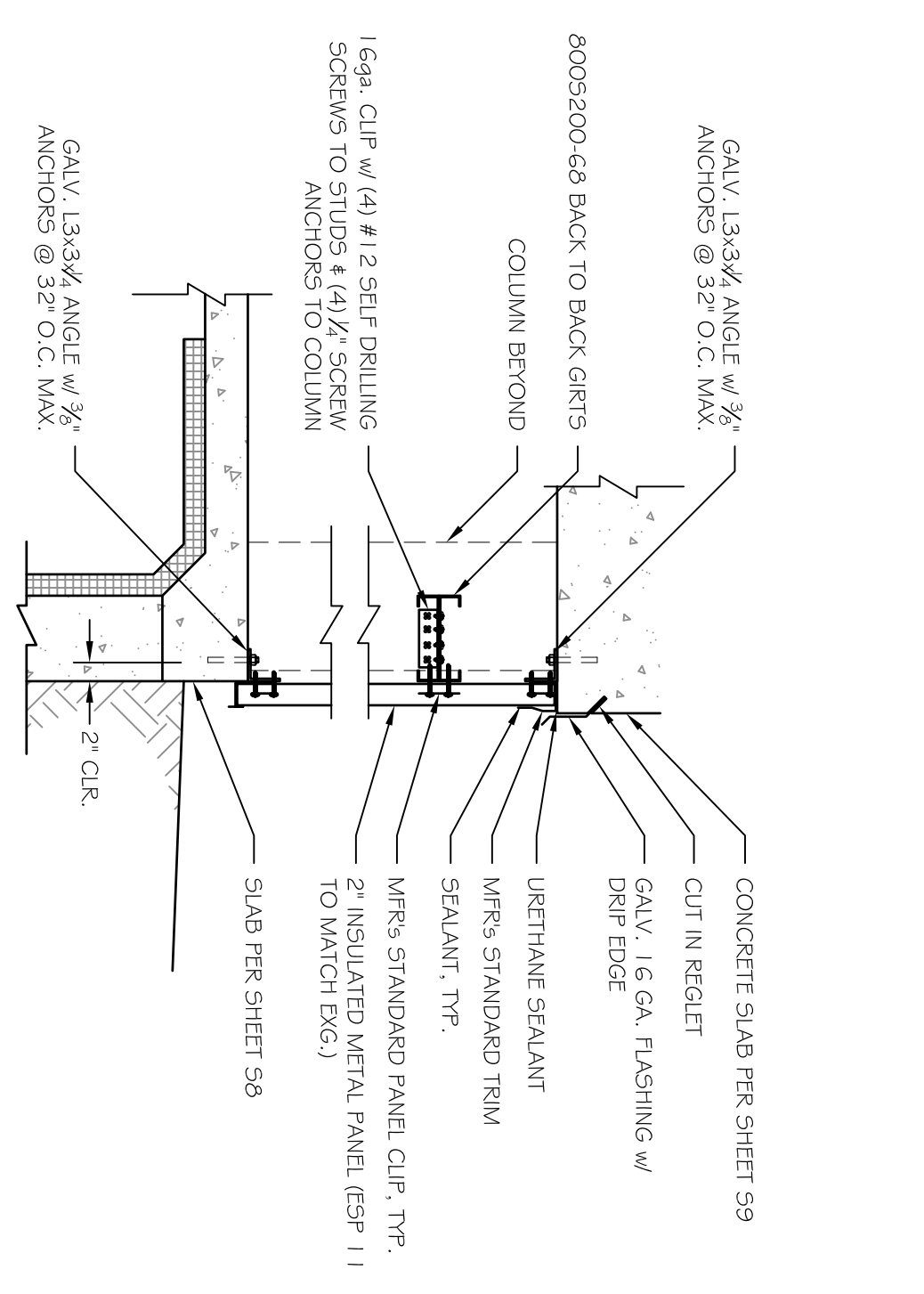
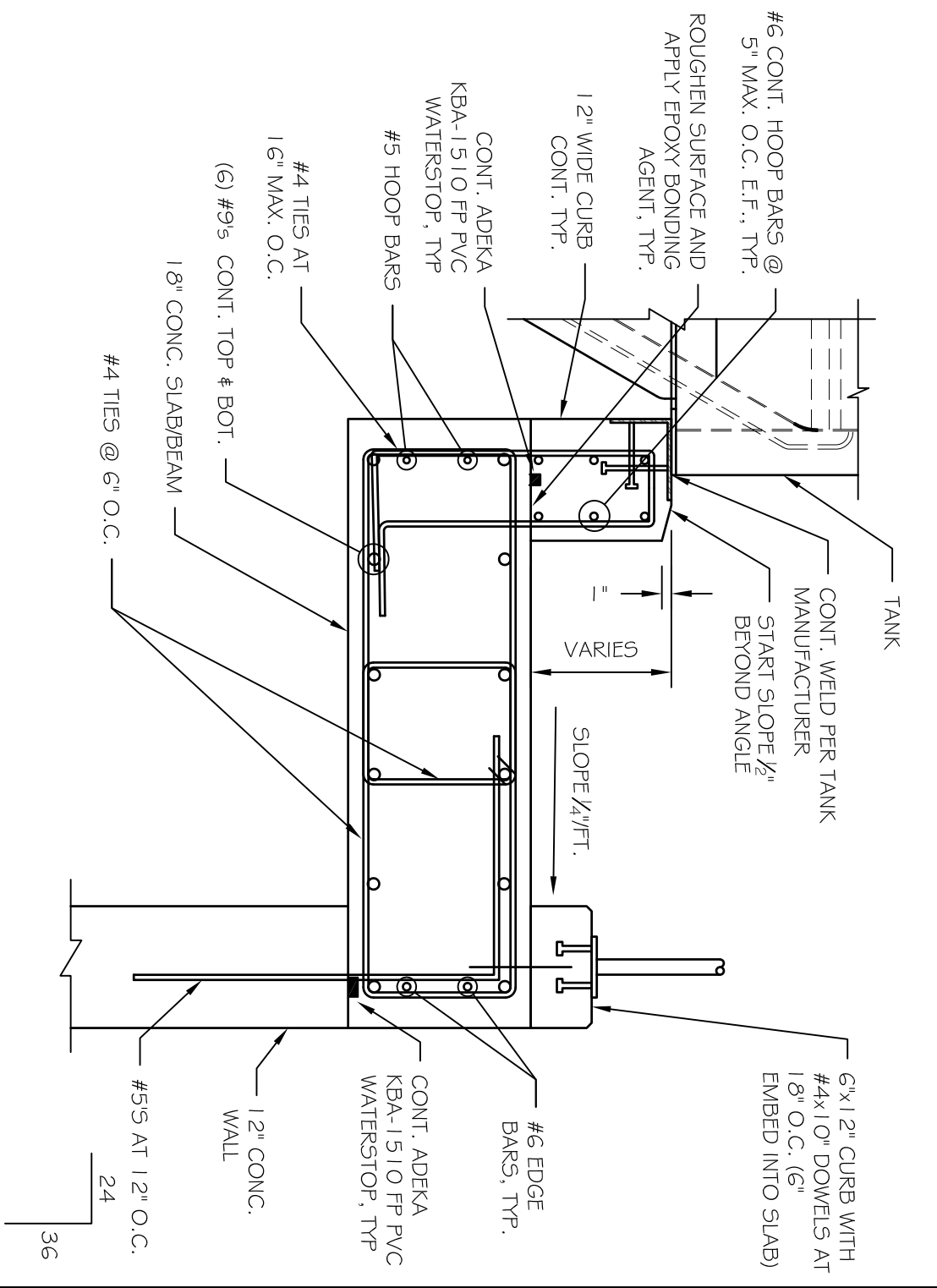
80 Leighton Road  
 Falmouth, Maine 04105

Office: (207) 878-1751  
 Fax: (207) 878-1788  
 E-Mail: [adp@adpengineering.com](mailto:adp@adpengineering.com)



DATE: 9-17-12  
 SCALE: AS NOTED  
 DESIGN BY: ASW  
 DRAWN BY: BSC  
 FILE #: 12180-S1  
 PROJECT NUMBER:  
**12248**  
 SHEET NO.:  
**89**

NOTES  
1. SEE DRAWING SET FOR GENERAL STRUCTURAL NOTES.



A4 COLUMN AT EXISTING FOOTING  
SCALE: 3/4" = 1'-0"

A3 COLUMN AND FOOTING AT INTERIOR  
SCALE: 3/4" = 1'-0"

A2 COLUMN AND FOOTING AT EXTERIOR  
SCALE: 3/4" = 1'-0"

A1 NEW CONC. WALL TO EXISTING DETAIL  
SCALE: 1/2" = 1'-0"

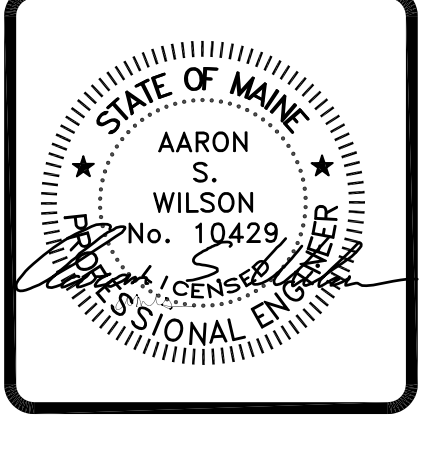
PROJECT: **ALLAGASH BREWERY**  
**FERMENTATION SUPPORT STRUCTURE**  
FOR: ALLAGASH BREWING CO, 50 INDUSTRIAL WAY, PORTLAND ME

SHEET TITLE:  
**FOUNDATION AND COLUMN DETAILS**  
**ISSUED FOR PERMITTING**

THIS DRAWING, DESIGN AND EXISTENCE FILE ARE THE PROPERTY OF ASSOCIATED DESIGN PARTNERS, INC. NO PART OF THIS DRAWING OR OTHER USE OF THIS DOCUMENT WITHOUT WRITTEN CONSENT IS PROHIBITED.

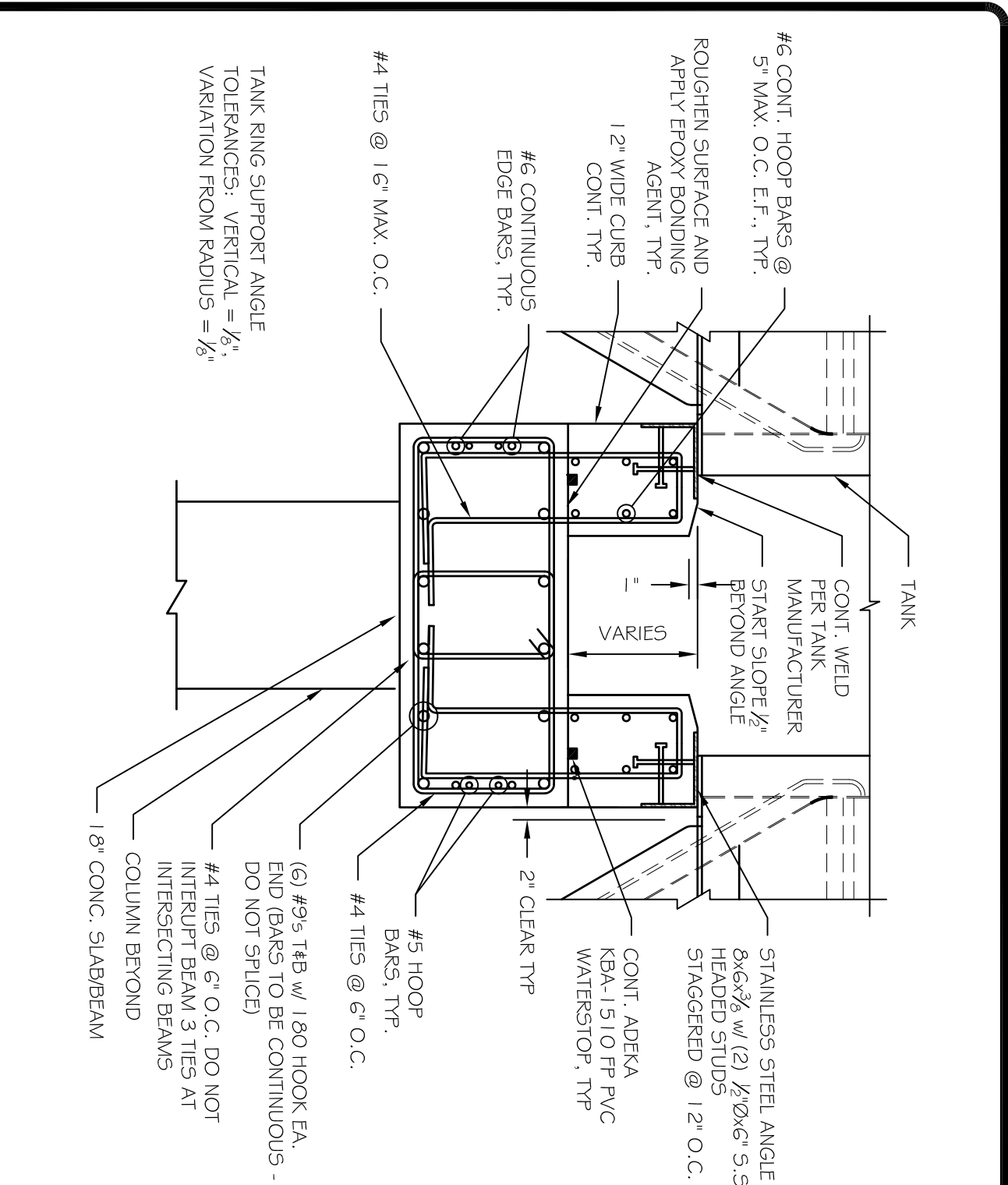
**ASSOCIATED DESIGN PARTNERS INC.**

80 Leighton Road Falmouth, Maine 04105  
Office: (207) 878-1751  
Fax: (207) 878-1788  
E-Mail: [adp@adpengineering.com](mailto:adp@adpengineering.com)

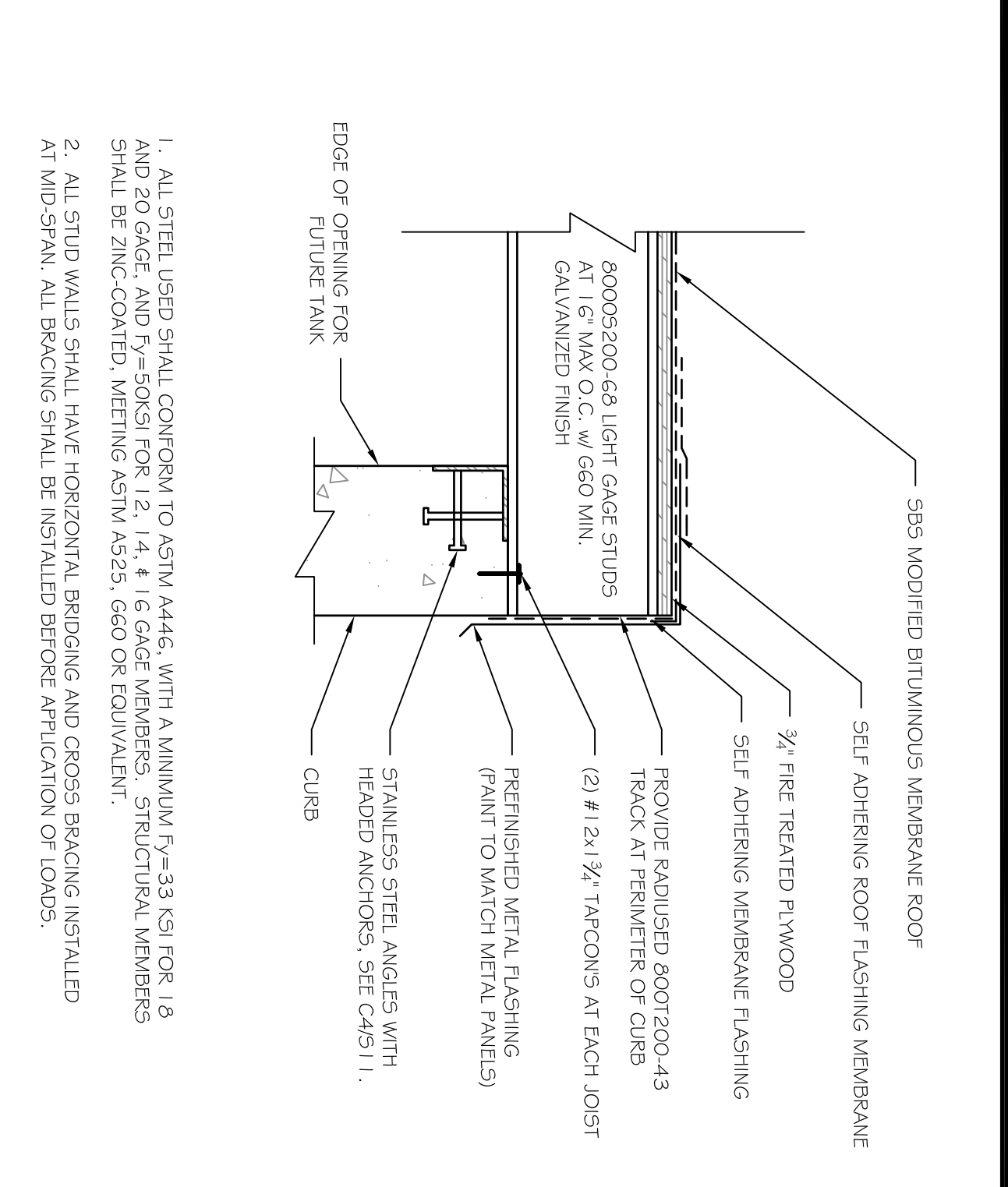


REVISIONS		DATE
No.	DESCRIPTION	
1	ADDENDUM #1	9/25/12

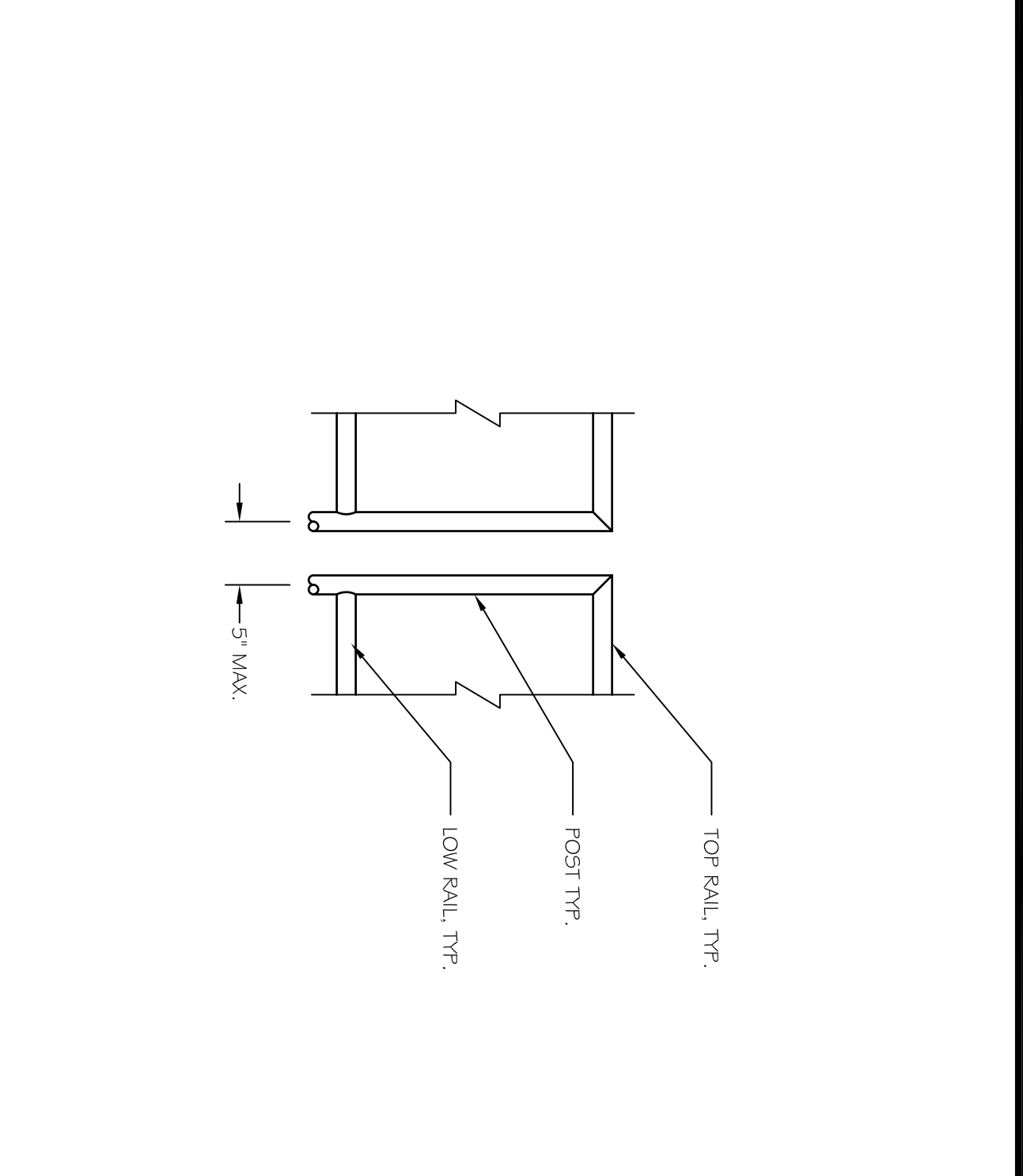
DATE: 9-17-12  
SCALE: AS NOTED  
DESIGN BY: ASW  
DRAWN BY: BSC  
PROJECT NUMBER:  
**12248**  
SHEET NO:  
**S10**



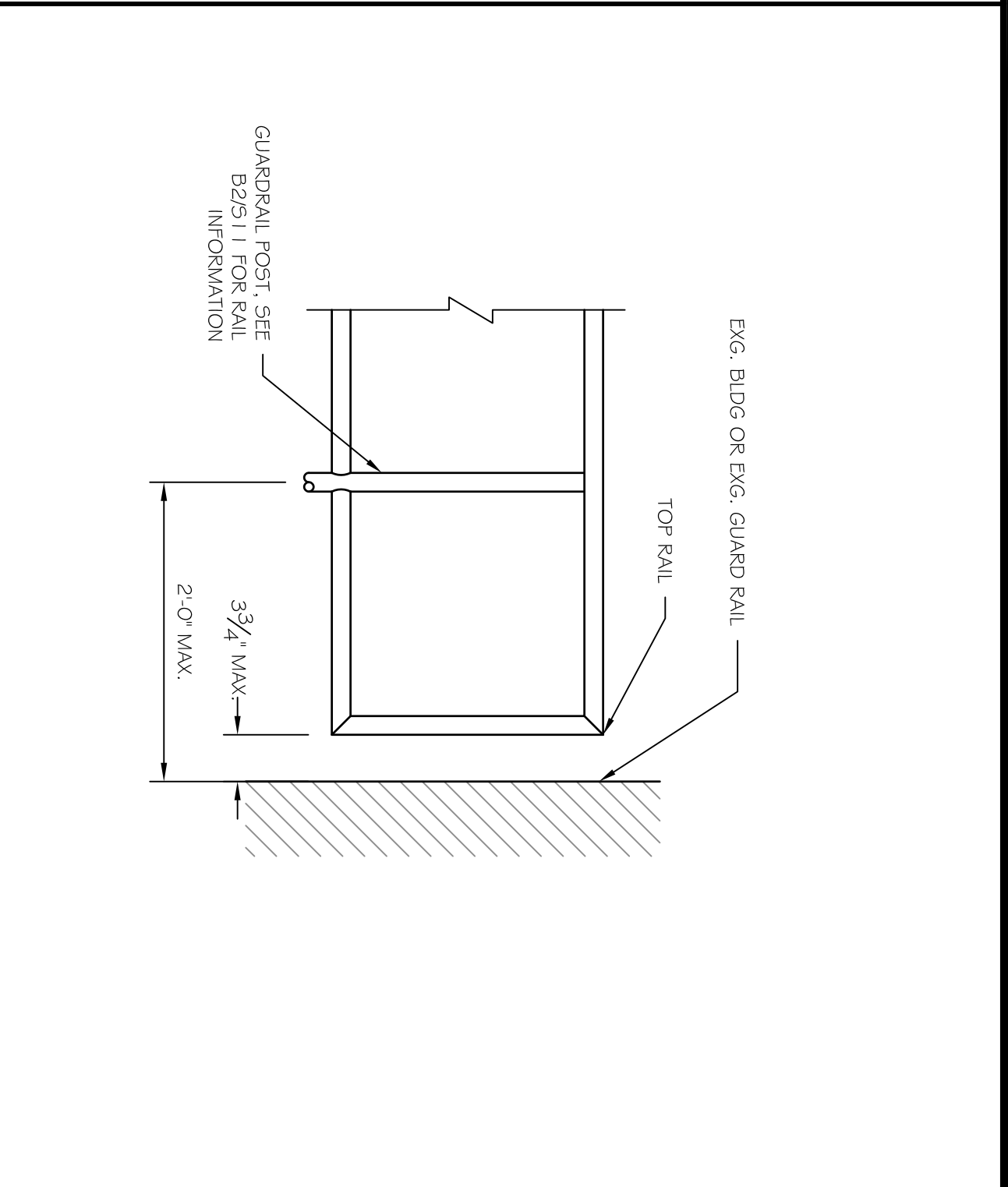
C4 DETAIL THRU TYP. CURB AND BEAM 3  
SCALE: 3/4" = 1'-0"



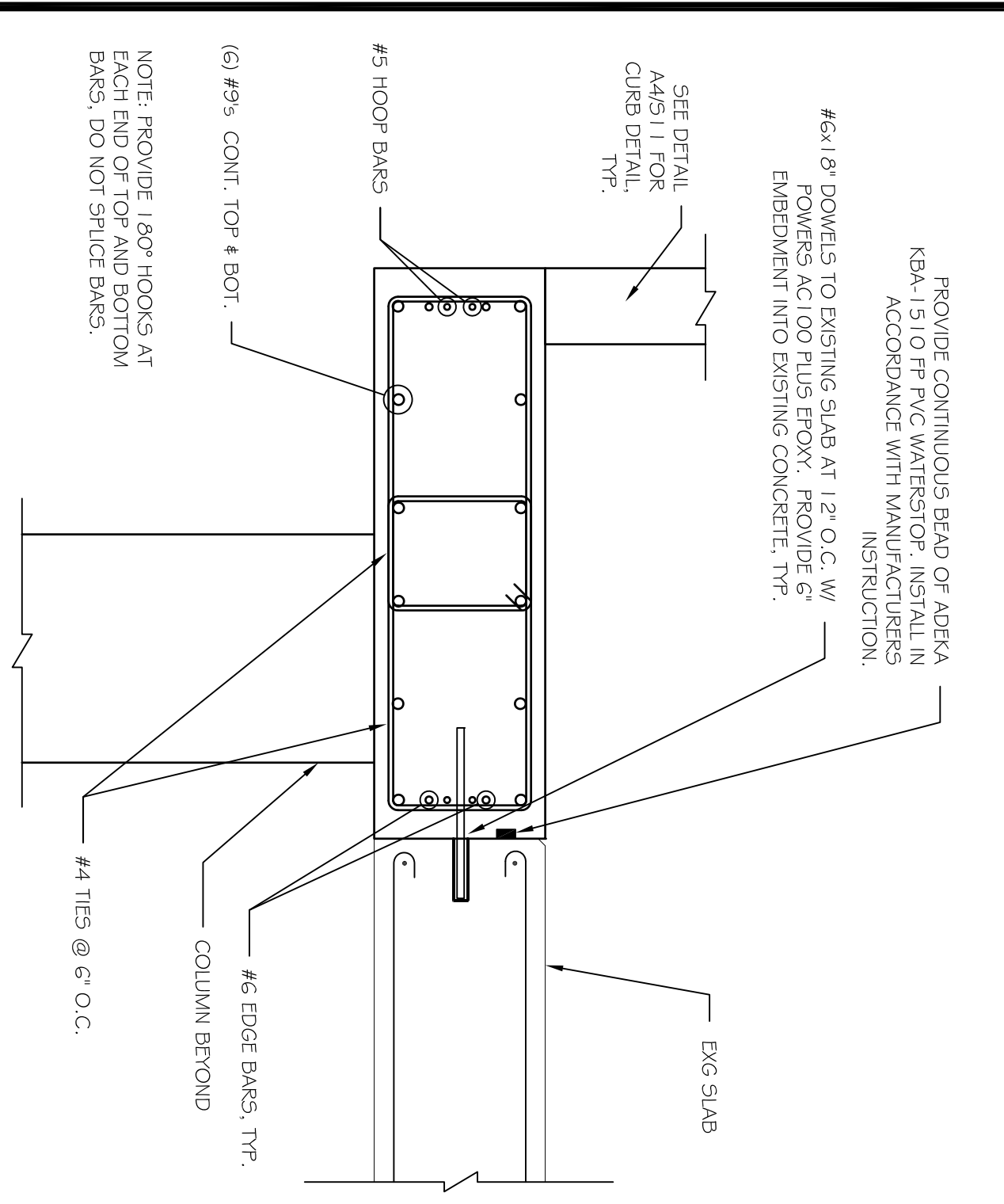
C3 TEMPORARY OPENING COVER DETAIL  
SCALE: 1/2" = 1'-0"



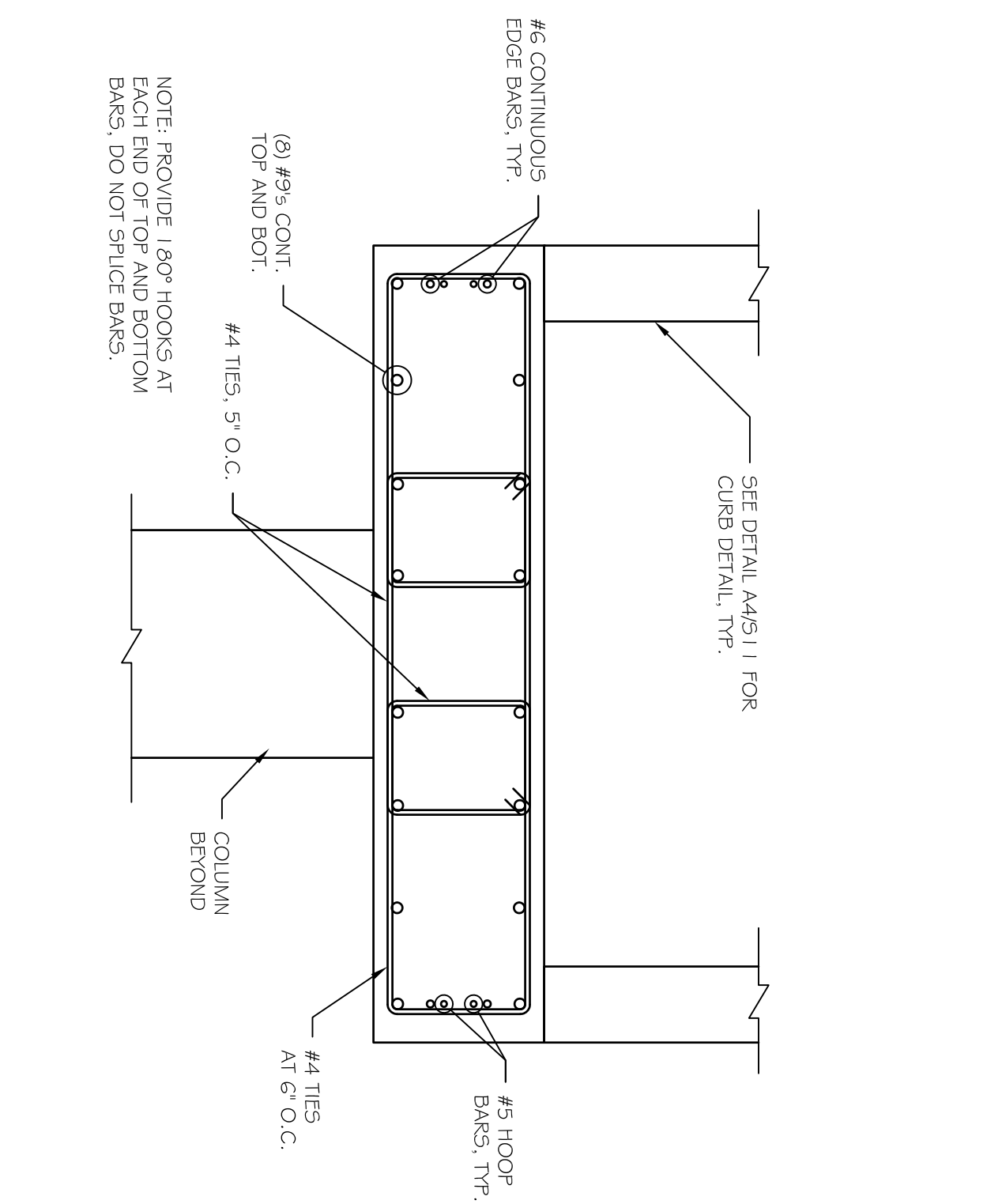
C2 POSTS AT REMOVABLE GUARDRAIL  
SCALE: 1" = 1'-0"



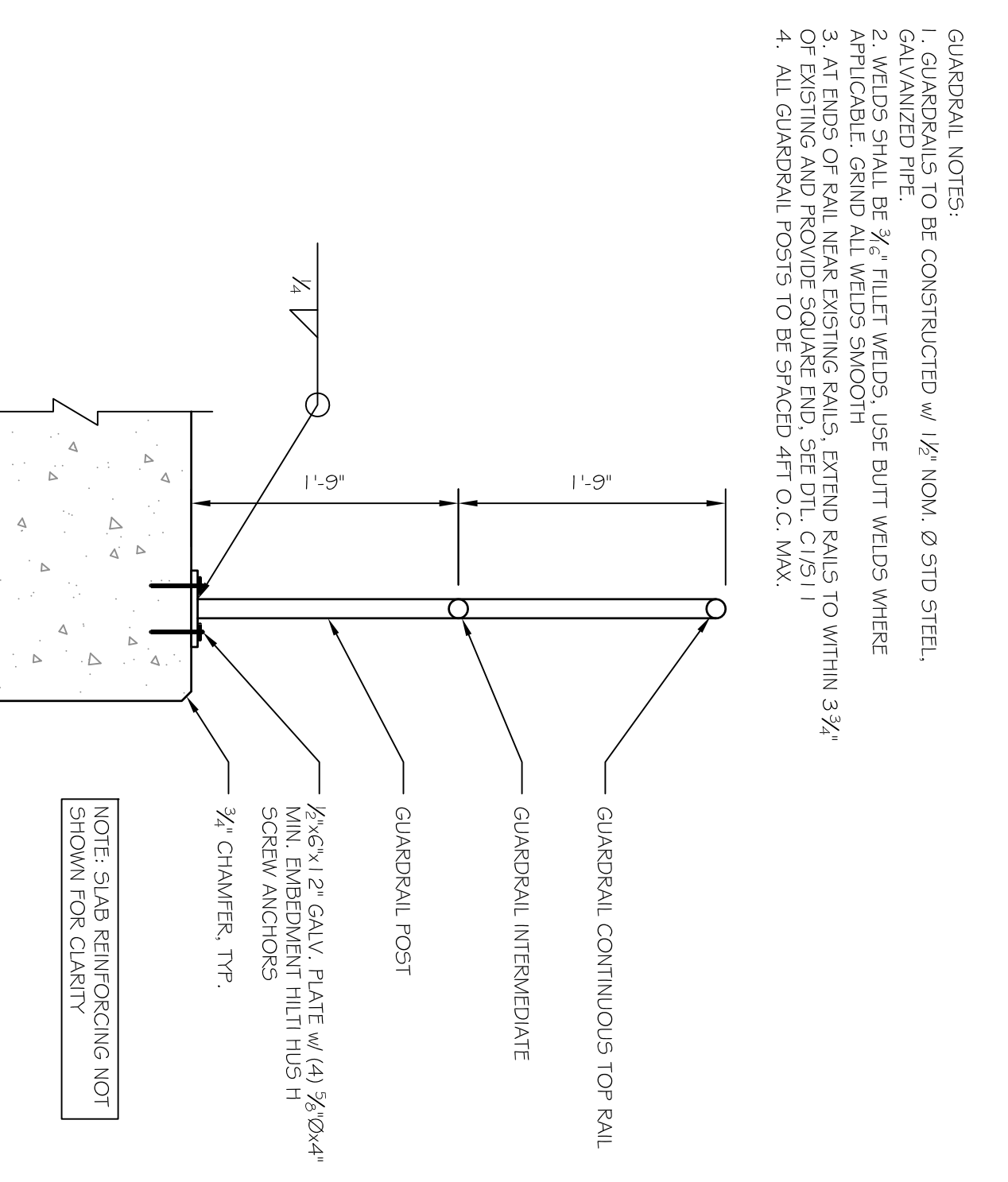
C1 GUARDRAIL EXTENSION DETAIL  
SCALE: 1" = 1'-0"



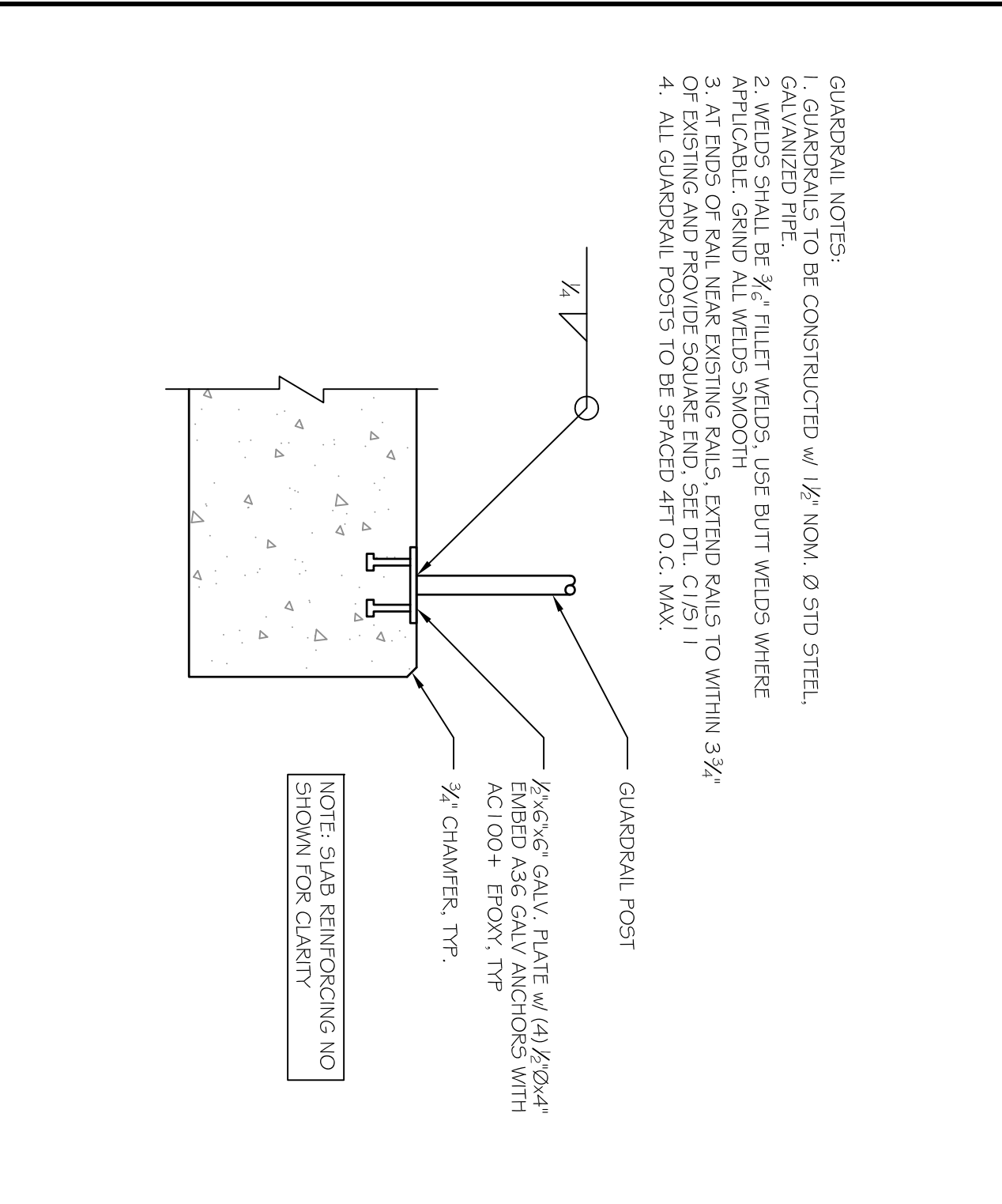
B4 BEAM 2 SCHEMATIC REINFORCING LAYOUT  
SCALE: 3/4" = 1'-0"



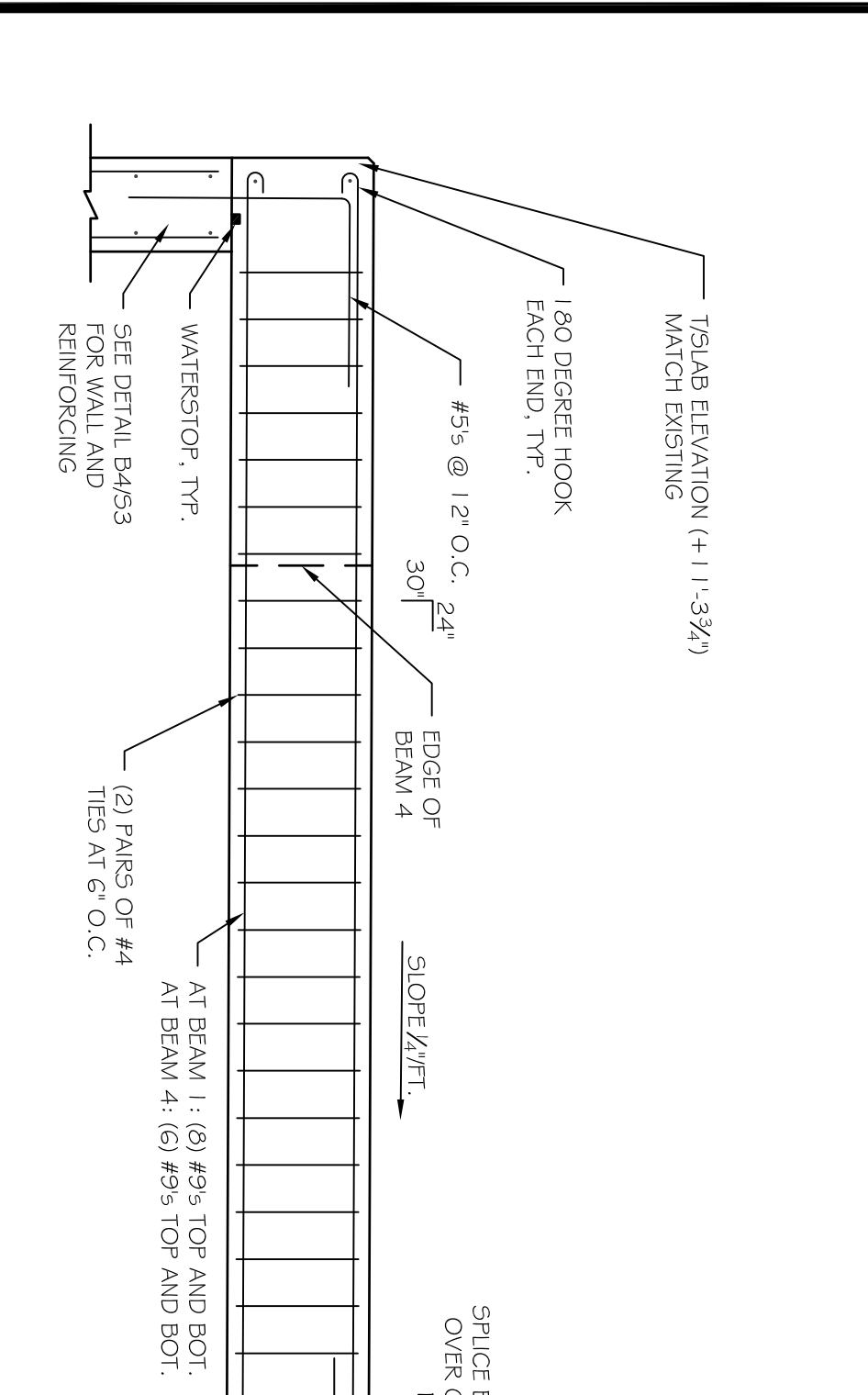
B3 BEAM 1 SCHEMATIC REINFORCING LAYOUT  
SCALE: 3/4" = 1'-0"



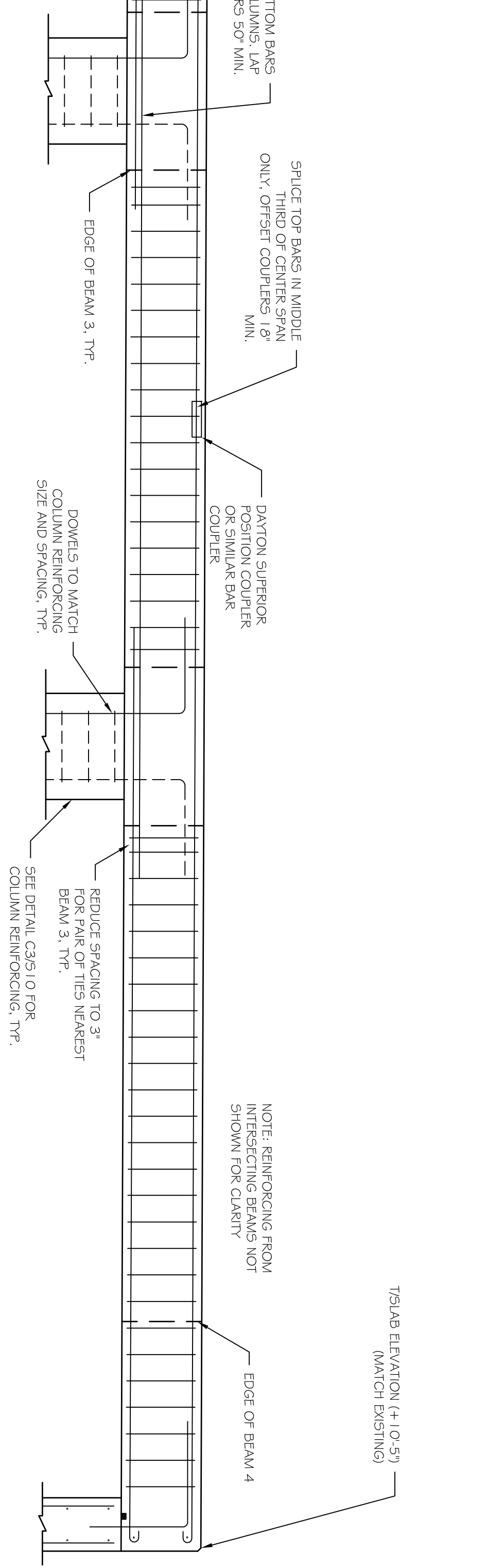
B2 REMOVABLE GUARDRAIL BASE  
SCALE: 1" = 1'-0"



B1 PERMANENT GUARDRAIL BASE  
SCALE: 1" = 1'-0"



A4 BEAM 1 & 2 REINFORCING ELEVATION  
SCALE: 1/2" = 1'-0"



A1 PANEL TO CONC. WALL JOINT DETAIL  
SCALE: 1/2" = 1'-0"



**ASSOCIATED DESIGN PARTNERS INC.**  
80 Leighton Road Falmouth, Maine 04105  
Office: (207) 878-1751  
Fax: (207) 878-1788  
E-Mail: adp@adpengineering.com

PROJECT: **ALLAGASH BREWERY FERMENTATION SUPPORT STRUCTURE**  
FOR: ALLAGASH BREWING CO., 50 INDUSTRIAL WAY, PORTLAND ME  
SHEET TITLE: **STRUCTURAL DETAILS ISSUED FOR PERMITTING**

REVISIONS		
No.	BY	DESCRIPTION
1	ASW	ADDENDUM #1

DATE: 9-17-12  
SCALE: AS NOTED  
DESIGN BY: ASW  
DRAWN BY: BSC  
FILE #: 12180-S1  
PROJECT NUMBER:  
**12248**  
SHEET NO.:  
**S11**