

BUILDING SECTION "A"

SCALE: "NTS"
FINISH FLOOR ELEV. 100.0'

GENERAL NOTES:

- IT IS THE BUILDING OWNERS RESPONSIBILITY TO PROVIDE ADEQUATE HEAT FOR ALL AREAS IN THE BUILDING PROTECTED BY WET SPRINKLER SYSTEMS AND FOR ALL WATER FILLED SUPPLY PIPES, VALVES AND SYSTEM RISERS IN ALL DRY PIPE SPRINKLER SYSTEMS.
- ALL NEW PIPING IS TO BE HYDROSTATICALLY TESTED AT NOT LESS THAN 200 PSI FOR 2 HOURS, OR AT 50 PSI IN EXCESS OF THE MAXIMUM PRESSURE, WHEN THE MAXIMUM PRESSURE TO BE MAINTAINED IS IN EXCESS OF 150 PSI. (PER NFPA 13)
- WHETHER OR NOT INDICATED ON DRAWINGS, THE FOLLOWING ITEMS ARE TO BE PROVIDED:
 - SPARE HEAD CABINET WITH WRENCH (NFPA 13)
 - PROVISIONS FOR FLUSHING CONNECTIONS AND DRAINING OF ALL PIPE.
 - INSPECTORS TEST CONNECTION SHALL BE PROVIDED FOR EACH SYSTEM
 - A) FOR WET PIPE SYSTEMS SEE NFPA 13)
 - B) FOR DRY PIPE SYSTEMS SEE NFPA 13)
 - AIR PRESSURE SHALL BE MAINTAINED ON ALL DRY PIPE SYSTEMS BY AN APPROVED AUTOMATIC AIR COMPRESSOR OR PLANT AIR SYSTEM SPECIFICALLY APPROVED FOR AND CAPABLE OF AUTOMATICALLY MAINTAINING THE REQUIRED AIR PRESSURE.
 - WET PIPE SYSTEMS SHALL BE PROVIDED WITH A RELIEF VALVE NOT LESS THAN 1/2" IN SIZE. (NFPA 13).
- ALL PIPE 1" SHALL BE SCHEDULE 40 STEEL WITH MALLEABLE IRON FITTINGS.
- ALL PIPE 1 1/4" AND LARGER, SHALL BE SCHEDULE 10 STEEL, WITH GROOVED COUPLINGS AND VICTAULIC® MECHANICAL FITTINGS OR EQUIVALENT.
- ALL MECHANICAL TRADES ARE TO COORDINATE THEIR WORK WITH SPRINKLER WORK AS SHOWN ON THESE PLANS.
- ALL HANGERS AND LOCATIONS ARE TO BE IN ACCORDANCE WITH N.F.P.A. 13.
- ALL PIPING IS TO BE PITCHED IN ACCORDANCE WITH N.F.P.A. 13.
- HYDRAULIC DATA REFERENCE POINTS: (25) BELOW DECK (12)
- PROTECTIVE CAPS ARE TO REMAIN ON THE SPRINKLER HEADS UNTIL AFTER CEILING ARE INSTALLED.
- THE SCOPE OF WORK UNDER THIS CONTRACT IS TO DESIGN AND INSTALL A WET SPRINKLER SYSTEM PER NFPA 13.

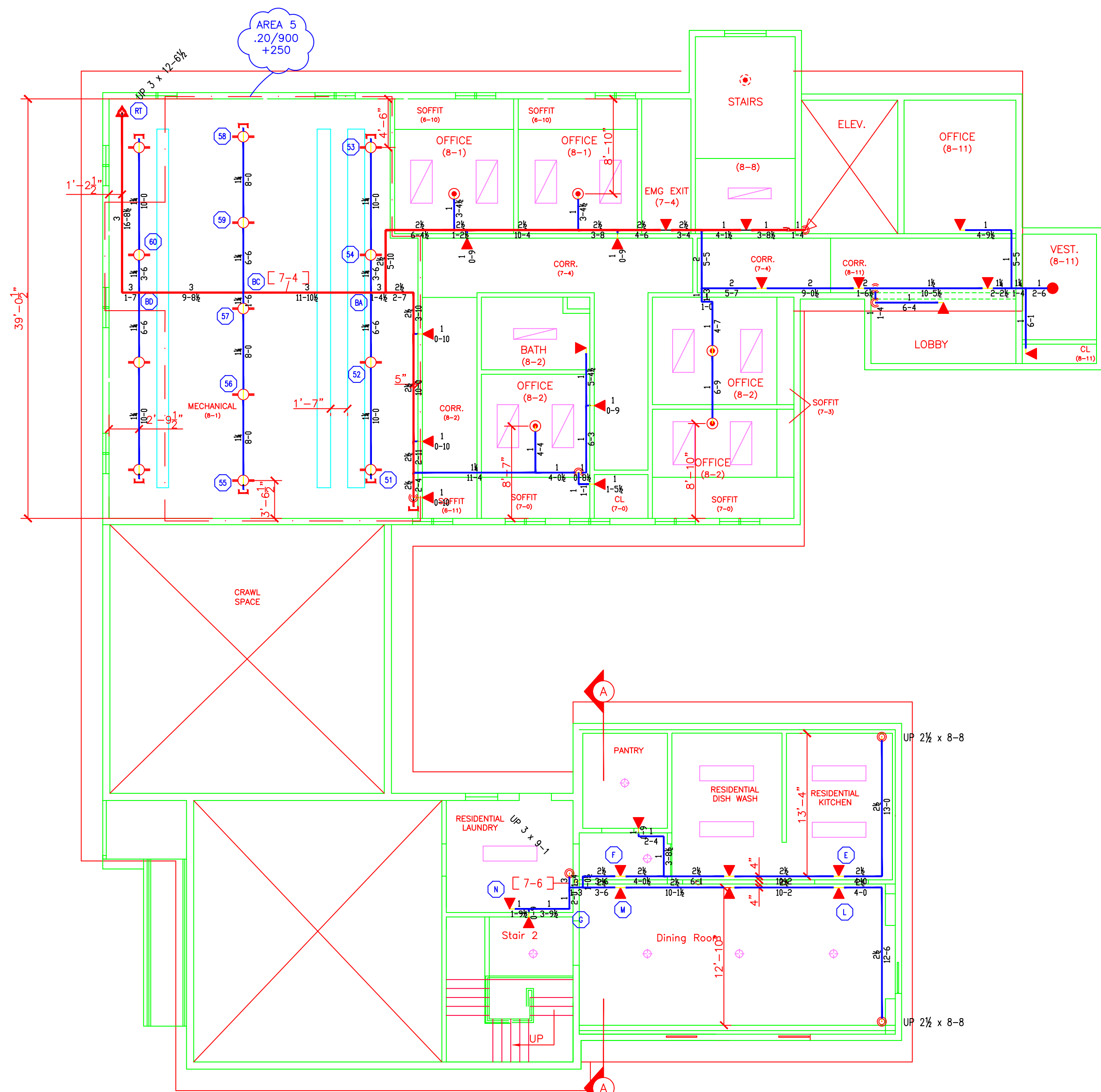
HYDRAULIC DATA NAMEPLATE
This Building is protected by a hydraulically designed Automatic Sprinkler System
Location - AREA-1
No. of Sprinkler 19
Basis of design
1. Density .10 gpm/sqft
2. Design area of discharge LRG_ROOM.rst
System Demand
1. Water Flow Rate 355.217 gpm
2. Residual Pressure 67.555 psi
CUSHION = 7.965 psi
MOST REMOTE

HYDRAULIC DATA NAMEPLATE
This Building is protected by a hydraulically designed Automatic Sprinkler System
Location - AREA-2
No. of Sprinkler 7
Basis of design
1. Density .10 gpm/sqft
2. Design area of discharge LRG_ROOM.rst
System Demand
1. Water Flow Rate 125.881 gpm
2. Residual Pressure 38.930 psi
CUSHION = 37.941 psi

HYDRAULIC DATA NAMEPLATE
This Building is protected by a hydraulically designed Automatic Sprinkler System
Location - AREA-3
No. of Sprinkler 5
Basis of design
1. Density .10 gpm/sqft
2. Design area of discharge SHD_CALC.rst
System Demand
1. Water Flow Rate 126.088 gpm
2. Residual Pressure 53.940 psi
CUSHION = 22.930 psi

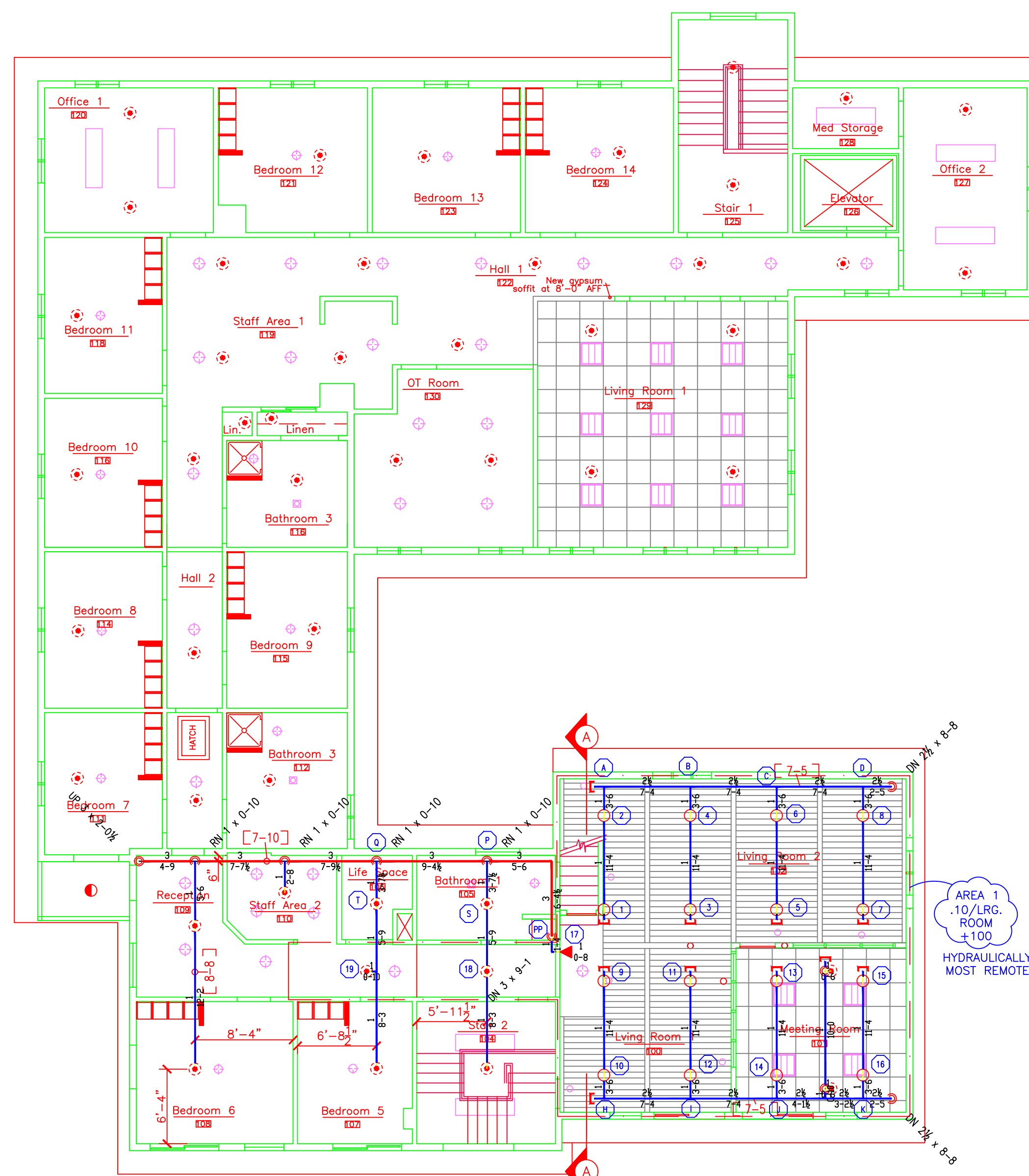
HYDRAULIC DATA NAMEPLATE
This Building is protected by a hydraulically designed Automatic Sprinkler System
Location - AREA-4
No. of Sprinkler 10
Basis of design
1. Density .10 gpm/sqft
2. Design area of discharge SHD_CALC.rst
System Demand
1. Water Flow Rate 126.169 gpm
2. Residual Pressure 43.375 psi
CUSHION = 33.495 psi

HYDRAULIC DATA NAMEPLATE
This Building is protected by a hydraulically designed Automatic Sprinkler System
Location - AREA-5
No. of Sprinkler 10
Basis of design
1. Density .20 gpm/sqft
2. Design area of discharge 900 sqft
System Demand
1. Water Flow Rate 271.684 gpm
2. Residual Pressure 38.571 psi
CUSHION = 36.882 psi



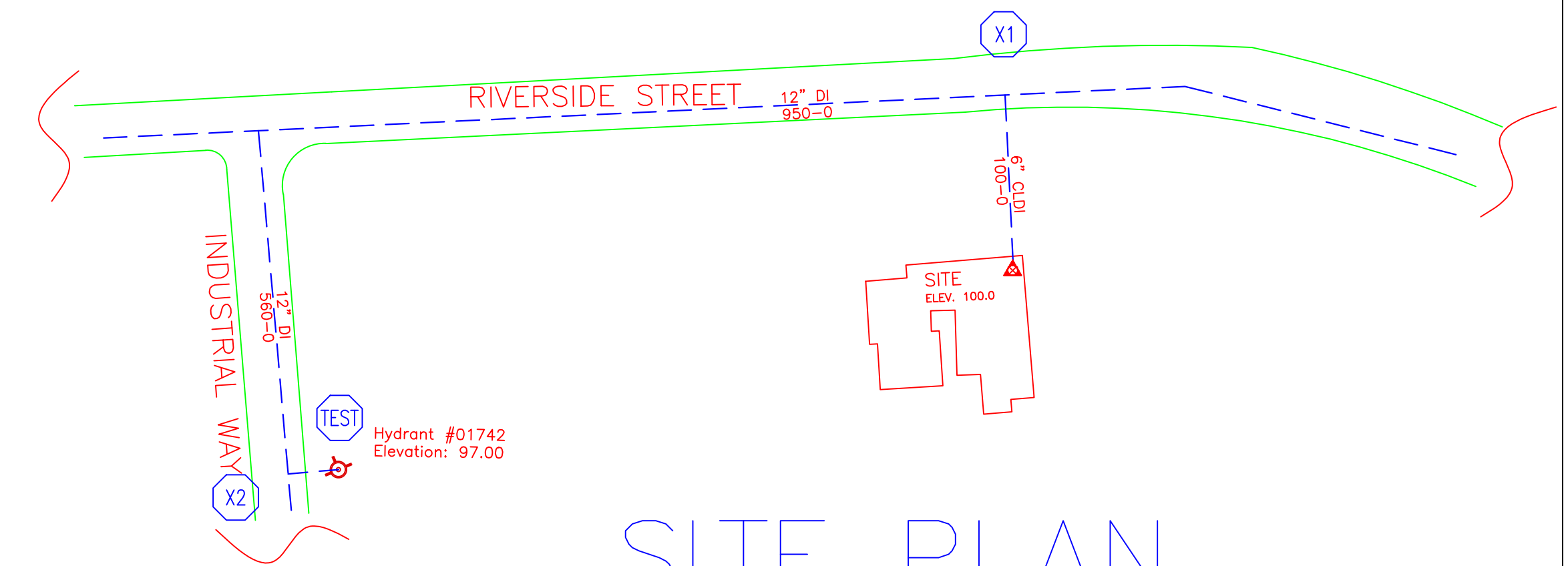
FIRST FLOOR SPRINKLER PLAN

SCALE: 1/8" = 1'-0"
FINISH FLOOR ELEV. 100.0'



SECOND FLOOR SPRINKLER PLAN

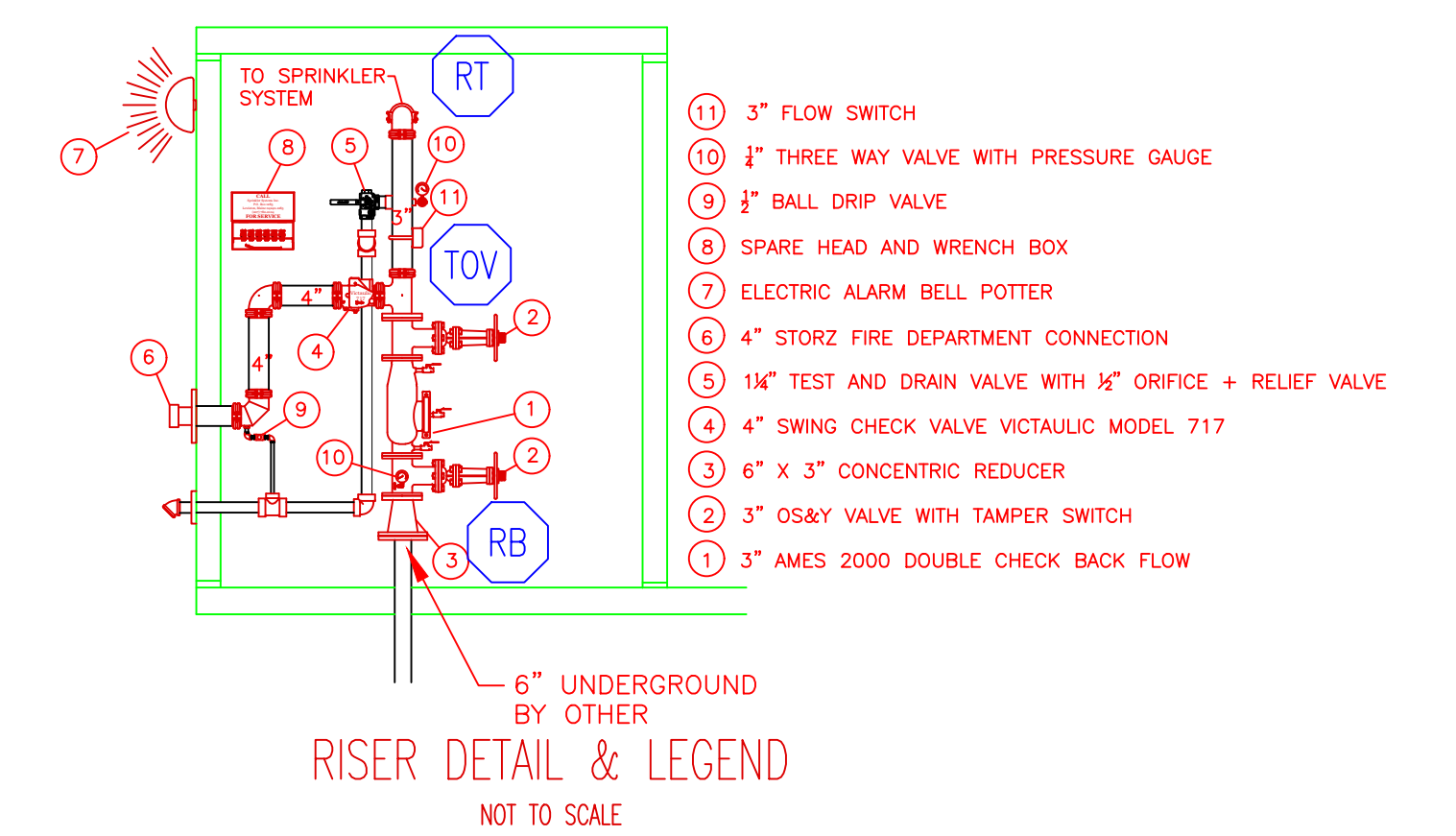
SCALE: 1/8" = 1'-0"
FINISH FLOOR ELEV. 108.75'



SITE PLAN

SCALE: "NTS"
FINISH FLOOR ELEV. 100.0'

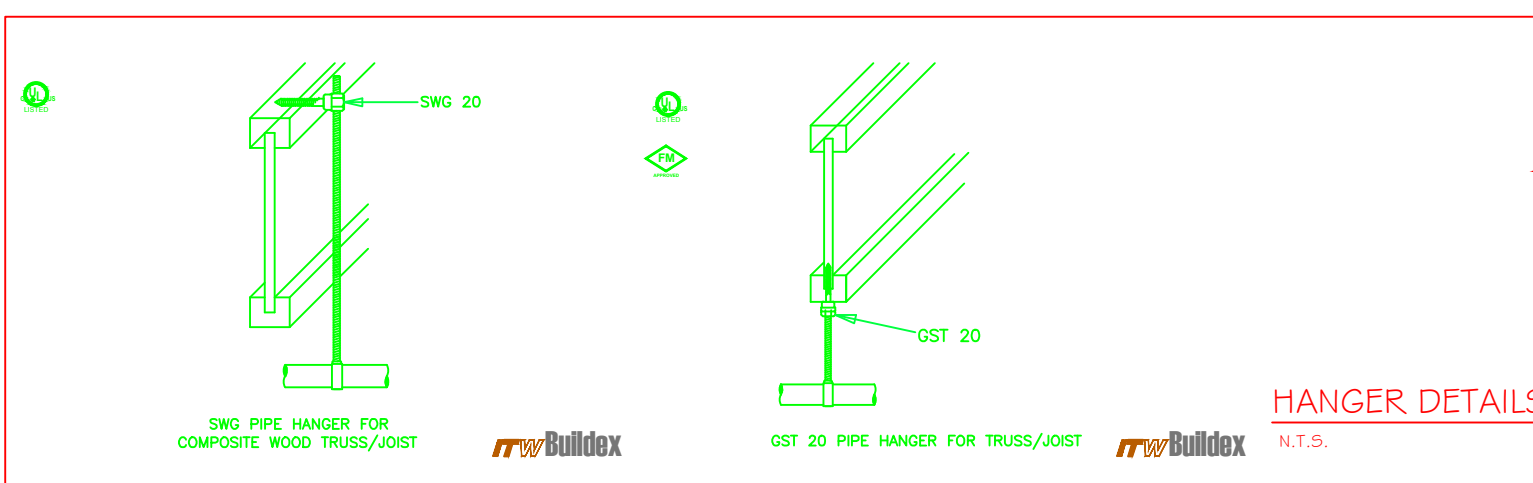
WATER DATA
STATIC 79 PSI
RESIDUAL 75 PSI
FLOW 1491 GPM
BY PORTLAND WATER DISTRICT
DATE 10/17/14
HYDRANT ELEV: 97.00' +/-



SPRINKLER HEAD LEGEND

SYMBOL	MAKE	MODEL	SIN	FINISH	TYPE	TEMP	NPT	ORIFICE	K-FACTOR	TOTAL
[Symbol]	RELIABLE	G5 56	RA3415	WHITE	CONICAL	165° F	1/2"	1/2"	5.6	45
[Symbol]	RELIABLE	F1FR 56	RA1425	BRONZE	UPRIGHT	200° F	1/2"	1/2"	5.6	14
[Symbol]	RELIABLE	F1FR 56	RA1414	WHITE	SEMI-REC PENDING	155° F	1/2"	1/2"	5.6	6
[Symbol]	RELIABLE	F3QR	RS714	CHROME	PENDING DRY	200° F	1"	1/2"	5.6	1
[Symbol]	GLOBE	GL	GL5639	BRONZE	UPRIGHT	200° F	1"	1/2"	5.6	1
[Symbol]	TYCO	8B3	TY3182	BRONZE	ATTIC	200° F	1/2"	1/2"	5.6	26
[Symbol]	RELIABLE	F1FR 56	RA1435	BRONZE	HORIZ SIDWALL	200° F	1/2"	1/2"	5.6	1
[Symbol]	RELIABLE	F1FR 56	RA1435	WHITE	HORIZ SIDWALL	155° F	1/2"	1/2"	5.6	25
[Symbol]	RELIABLE	F1FR 56	RA1425	BRONZE	UPRIGHT	155° F	1/2"	1/2"	5.6	16
HEAD 4 + HEAD 2										1
HEAD 3 + HEAD 5										1
TOTAL										135

- Type of Hazard QHZ/LIGHT
- Deflector Distance PER SPEC
- Pipe Type Used BLK_SCH_10/40
- Sprinkler Area PER SPEC
- Type of Construction NON-COMBUSTIBLE
- Maximum Spacing Allowed PER NFPA 13
- PIPE SIZING METHOD: PIPE SCHEDULE HYDRAULICALLY CALCULATED
- ALL HANGERS AND LOCATIONS TO BE IN ACCORDANCE WITH N.F.P.A. PAMPHLET NO. 13
- HIGH DEGREE TEMPERATURE SPRINKLER HEADS TO BE INSTALLED IN ACCORDANCE WITH N.F.P.A. PAMPHLET NO. 13



HANGERS

AS SHOWN IN DETAIL

ABBREVIATIONS

B Bottom of Beam
D Bottom of Deck
P Bottom of Pipe
HW Hangee
N.A.C. Nipple and Cap
N.C. Net in Contract
N.T. Not to Scale
O.B. Open Bar Joists
P.R.V. Pressure Red Valve
R.M. Roof Membrane
S.S. Standpipe
T.O.B. Top of Beam
T.O.P. Top of Pipe
T.O.S. Top of Steel
U.N. Unusual Orientation Noted
C.L. Centerline
N.A. No Automatic Sprinklers
O.A. Open to Above

CONTRACT RESPONSIBILITIES

ITEM	FFC	OTHERS
STREET CORN		
LOG MAN		
EXCAVATION		
FLUSHING		
WIRING		
PAINTING		
TAMPER SWITCHES		
FLOW SWITCHES		
STREET CORN		

SUBMITTALS

SENT TO	DATE SENT	DATE RECEIVED
STREET CORN	03/30/12	
I.S.O.		
F.M.		
L.M.		
I.R.I.		
L.A.		
STATE FIRE		
LOCAL FIRE		
LOCAL WATER		
OWNER		

SENT TO: STREET CORN, I.S.O., F.M., L.M., I.R.I., L.A., STATE FIRE, LOCAL FIRE, LOCAL WATER, OWNER

DATE SENT: 03/30/12

DATE RECEIVED:

SPRINKLER SYSTEMS INC.
P.O. BOX 1285
LEWISTON MAINE
04243-1285

SMITH HOUSE-SPURWINK
899 RIVERSIDE STREET
PORTLAND, ME 04103

CONTRACT WITH: PC

SYSTEM TYPE: WET, DRY, DELUGE, PREACTION, ME LIFE, HYDRO-PRO

NO. DATE DESCRIPTION

REVISIONS

DATE: 12/8/2016

TOTAL SPKRS ON JOB: 135

SHEET# 1 of 1

JOB# 16136

SCALE: AS NOTED

DRAWN BY: RDO

CHECKED BY: SEG

DATE: 12/8/2016

TOTAL SPKRS ON JOB: 135

SHEET# 1 of 1

JOB# 16136

SUBMITTAL COPY