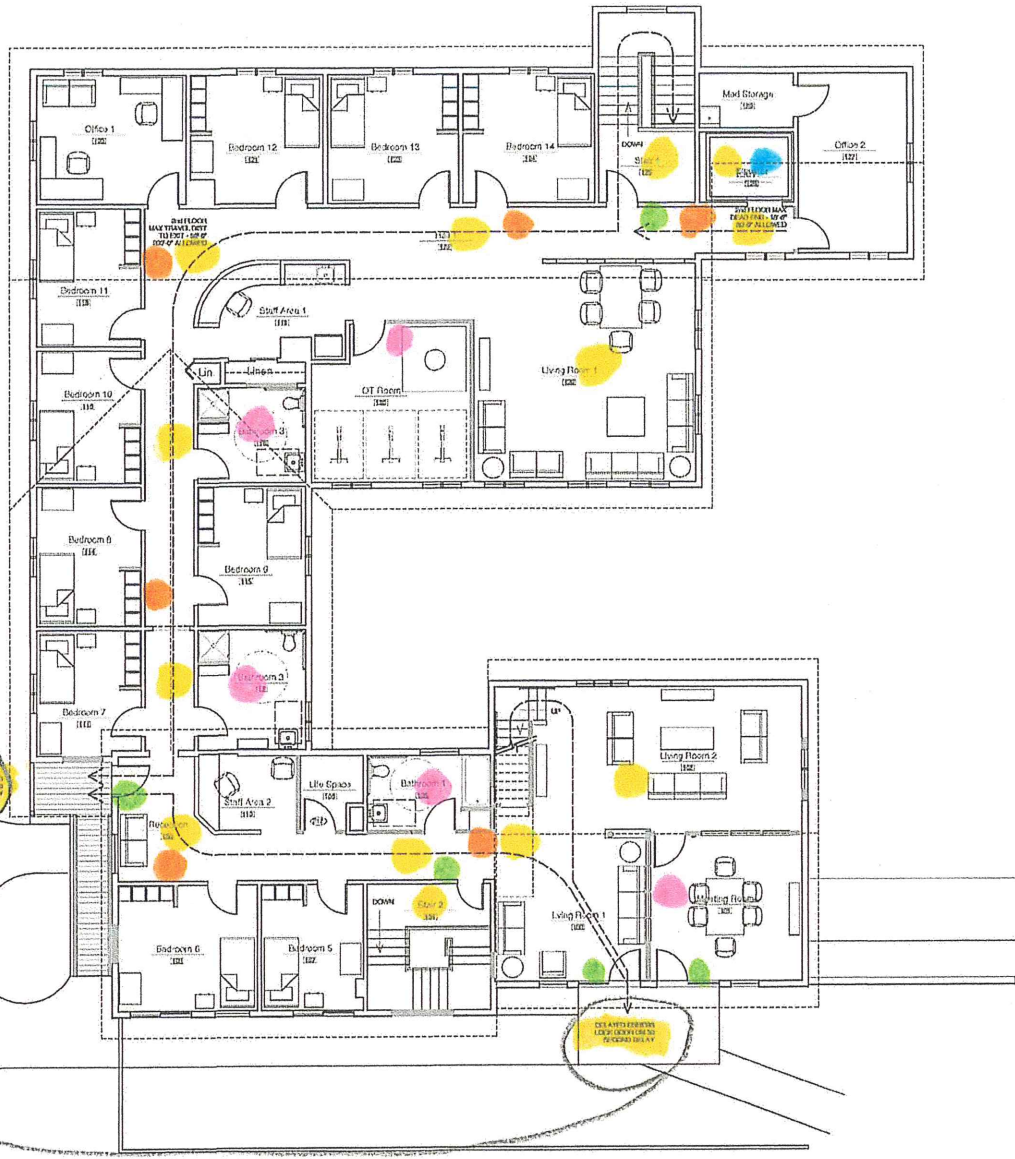


120VAC  
Smoke alarm in each bedroom



Tie to alarm system.

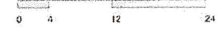
TIE TO FIRE ALARM SYSTEM

TIE TO FIRE ALARM SYSTEM

Partition Legend

- Existing Partitions to Remain
- Proposed New Partitions

10 Second Floor Plan



41 edgewood ave  
roxbury, ma 02119  
tel: 617 467 0750  
www.garrisonconsulting.com

DATE:	REVISIONS:

PROJECT NAME: **Spurwink Services**  
PROJECT LOCATION: **Smith House Renovation**  
PROJECT NUMBER: **888 Bluegrass St  
Plymouth, MA 01969  
617.755.3774 1017102100**



DATE: **August 15, 2018**  
SCALE: **3/8" = 1'-0"**  
PROJECT #:  
DRAWING TITLE: **Second Floor Code Plan**  
DRAWING NUMBER: **A002**