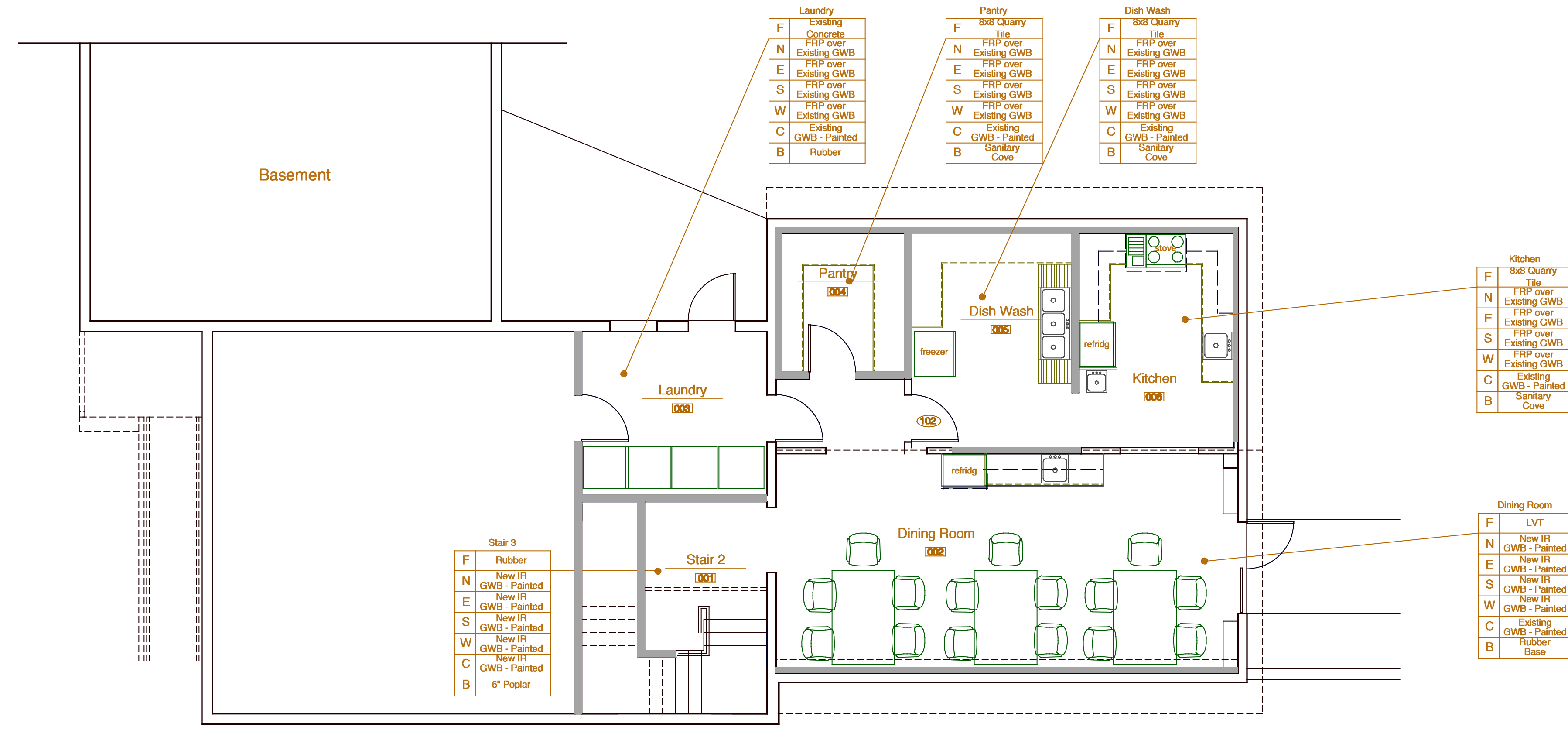


date	description
08/12/2010	Issued for Building Permit

project name **Spurwink Services**
Smith House Renovation
 project location 899 Riverside St
 Portland, Maine
 45°17'58.77N 70°12'03.40"



date	scale	project #	drawing title	drawing number
August 15, 2016	1/8" = 1'-0"	2016-006	Ground & Third Floor Finish Plan	A901



Laundry

F	Existing Concrete
N	FRP over Existing GWB
E	FRP over Existing GWB
S	FRP over Existing GWB
W	FRP over Existing GWB
C	Existing GWB - Painted
B	Rubber

Pantry

F	8x8 Quarry Tile
N	FRP over Existing GWB
E	FRP over Existing GWB
S	FRP over Existing GWB
W	FRP over Existing GWB
C	Existing GWB - Painted
B	Sanitary Cove

Dish Wash

F	8x8 Quarry Tile
N	FRP over Existing GWB
E	FRP over Existing GWB
S	FRP over Existing GWB
W	FRP over Existing GWB
C	Existing GWB - Painted
B	Sanitary Cove

Kitchen

F	8x8 Quarry Tile
N	FRP over Existing GWB
E	FRP over Existing GWB
S	FRP over Existing GWB
W	FRP over Existing GWB
C	Existing GWB - Painted
B	Sanitary Cove

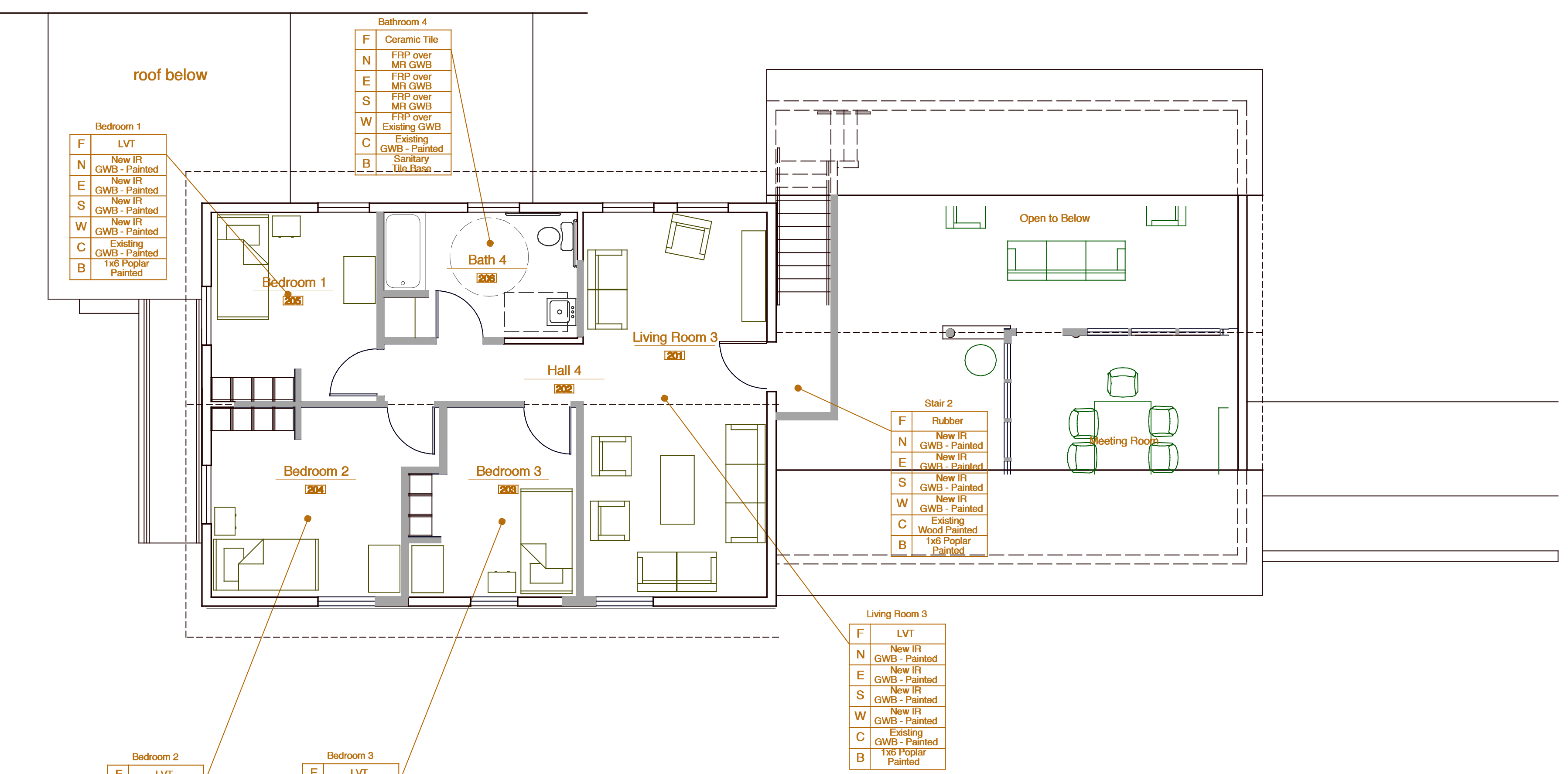
Dining Room

F	LVT
N	New IR
E	New IR
S	New IR
W	New IR
C	Existing GWB - Painted
B	Rubber Base

Stair 3

F	Rubber
N	New IR
E	New IR
S	New IR
W	New IR
C	Existing GWB - Painted
B	6" Poplar

20 Partial Ground Floor Plan



Bathroom 4

F	Ceramic Tile
N	FRP over MR GWB
E	FRP over MR GWB
S	FRP over MR GWB
W	FRP over Existing GWB
C	Existing GWB - Painted
B	Sanitary Tile Base

Stair 2

F	Rubber
N	New IR
E	New IR
S	New IR
W	New IR
C	Existing Wood Painted
B	1x6 Poplar Painted

Living Room 3

F	LVT
N	New IR
E	New IR
S	New IR
W	New IR
C	Existing GWB - Painted
B	1x6 Poplar Painted

Bedroom 2

F	LVT
N	New IR
E	New IR
S	New IR
W	New IR
C	Existing GWB - Painted
B	1x6 Poplar Painted

Bedroom 3

F	LVT
N	New IR
E	New IR
S	New IR
W	New IR
C	Existing GWB - Painted
B	1x6 Poplar Painted

Partition Legend

- Existing Partitions to Remain
- Proposed New Partitions

10 Partial Third Floor Plan

