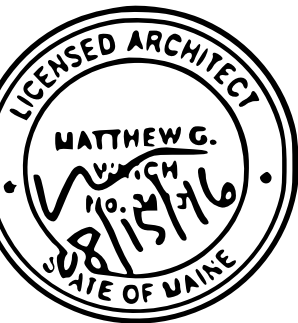


date	revision
06/07/2010	Shifted Pantry, Hall & MP Storage

project name
Spurwink Services

project location
Smith House Renovation
899 Riverside St
Portland, Maine
45°17'56.77N 70°12'03.40"



date
August 15, 2016

scale
1/8" = 1'-0"

project #
2016-006

drawing title
Enlarged Floor Plans

drawing number
A104

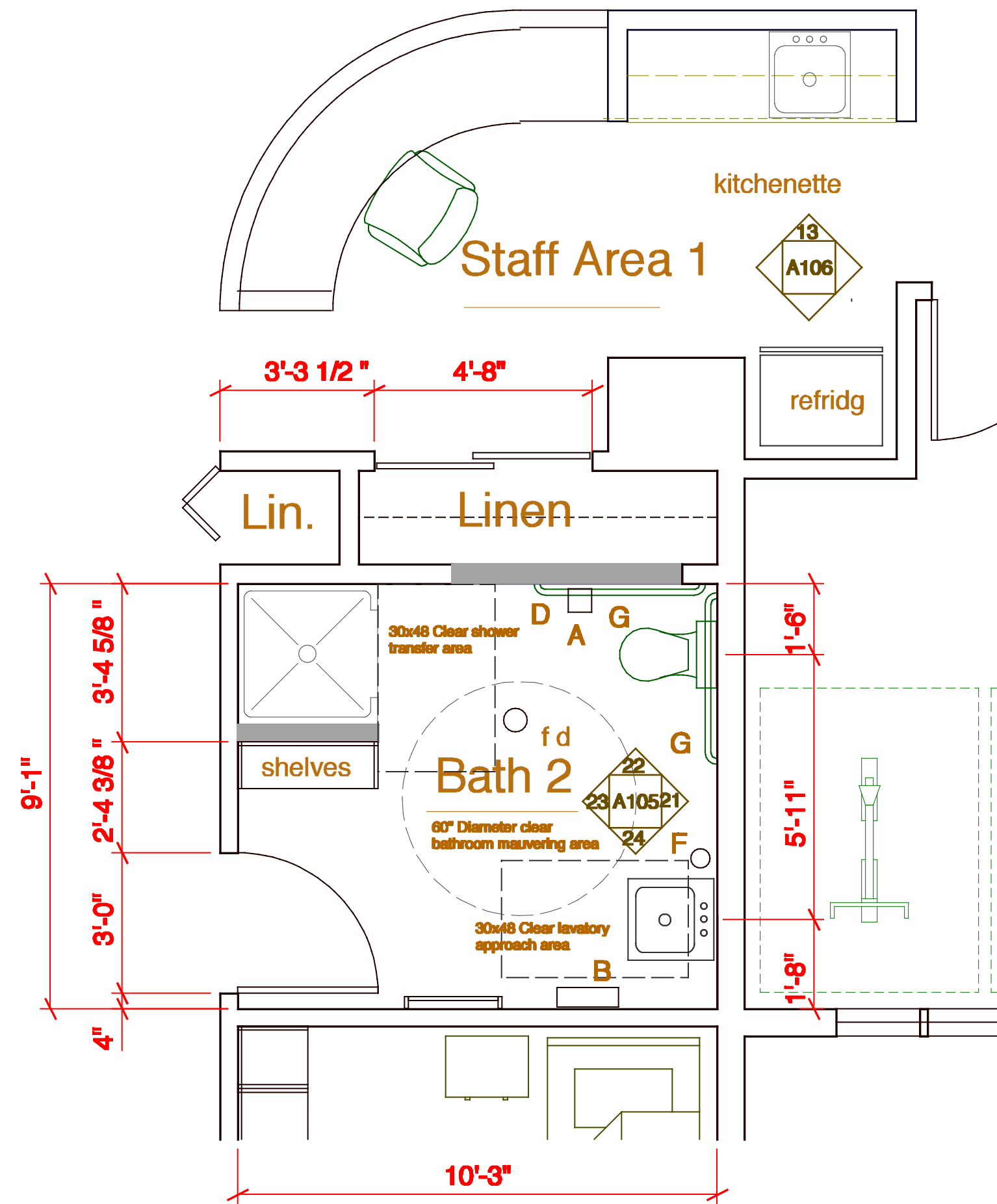
Kitchen Equipment Schedule

Description	Size	Finish
Z 3-Bay wash sink w/ intergal drainboards	92" x 24" x 34"h	SS / SF
Y 1-Bay food prep sink	22" x 24" x 34"h	SS / SF
X 1-Bay hand sink	19" x 24" x 34"h	SS / SF
W Custom SS countertops	Size varies see plan	SS / SF
V 6-Burner stove / griddle / oven	60" x 28" x 34"h	SS / SF
T Exhaust Hood	TBD	SS / SF
S Refrigerator	TBD	SS / SF
R Freezer	TBD	SS / SF
P Built-in shelving	TBD	TBD

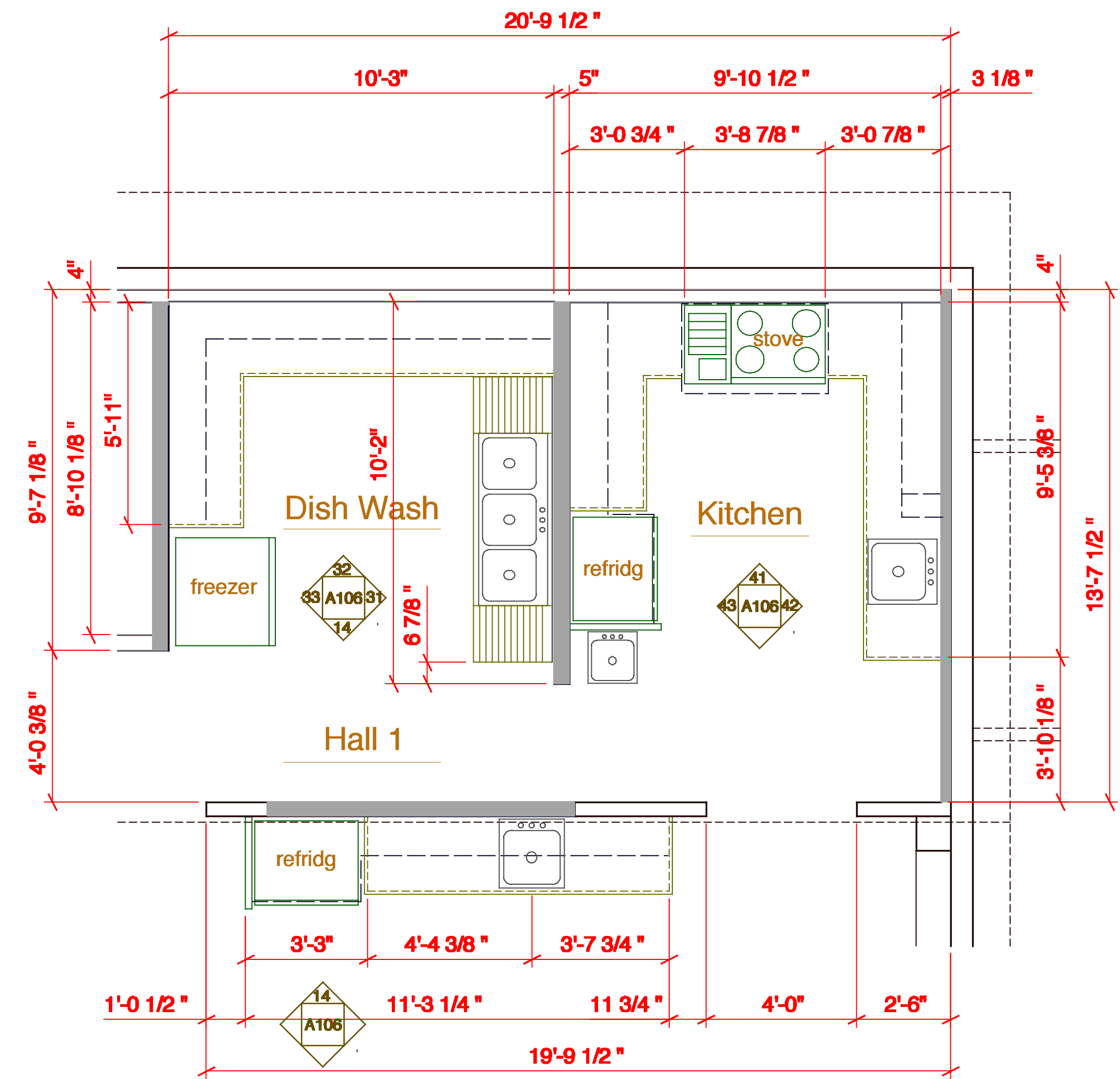
Toilet Accessories Schedule

Description	Finish	Description	Finish
A Toilet Tissue Holder	SS / SF	K Soap and Shampoo Basket	SS / SF
B Paper Towel Dispen./Dispos.	SS / SF	L Robe Hook	SS / SF
C Sanitary Napkin Dispenser	SS / SF	M Mirror- Tilting	SS / SF
D Sanitary Napkin Disposal	SS / SF	N Mirror	SS / SF
E NOT USED	SS / SF	O Soap Dish- Recess.	SS / SF
F Soap Dispenser - Wall Mount	SS / SF	P Soap Dish- Surface Mount	SS / SF
G Grab Bars Bobrick Series	SS / SF	R Mop Rack	
H NOT USED		S Mop Rack w/ Shelf	
J NOT USED		T NOT USED	

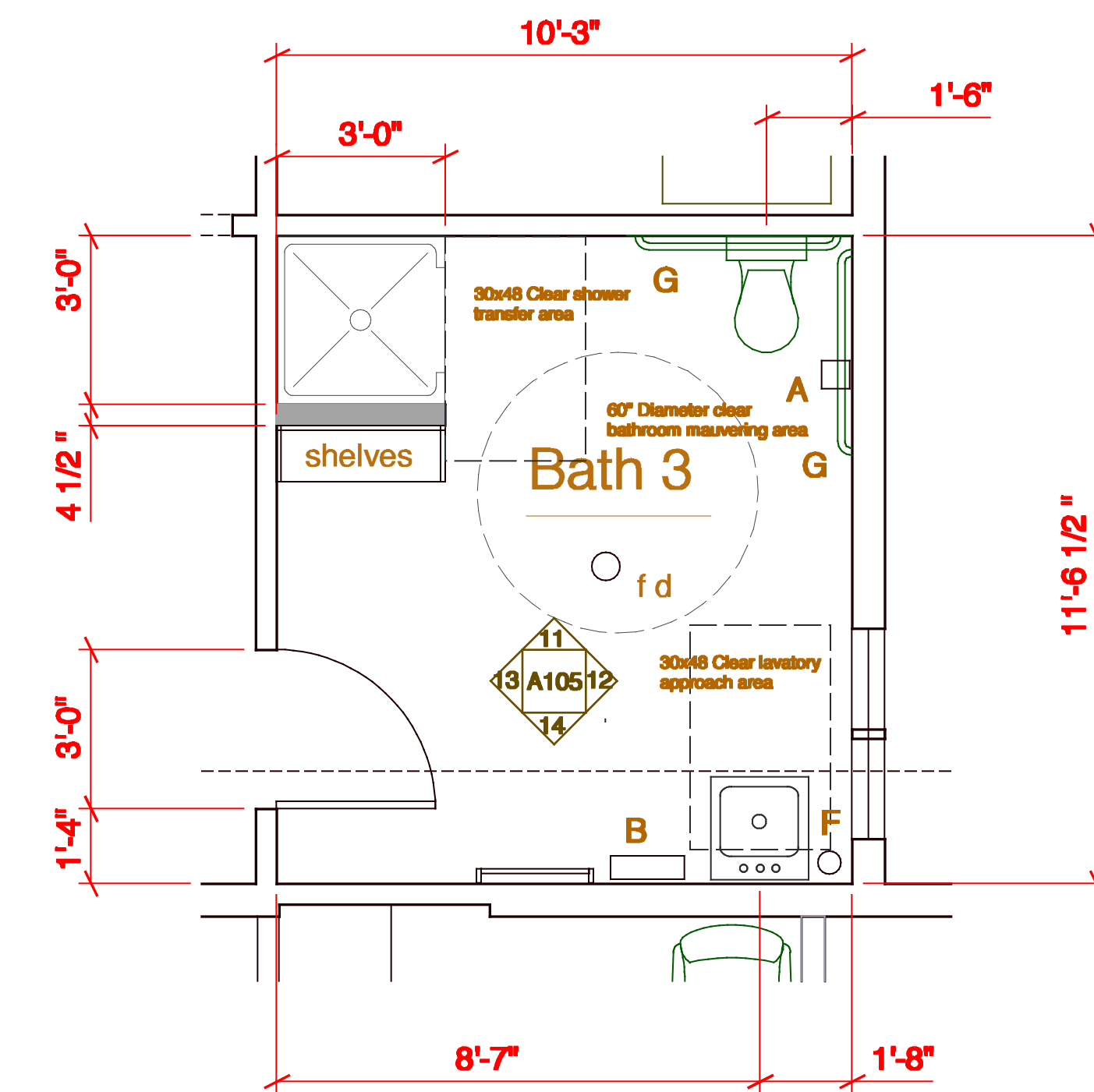
* INDICATES ACCESSORIES FURNISHED BY OWNERS PAPER VENDOR



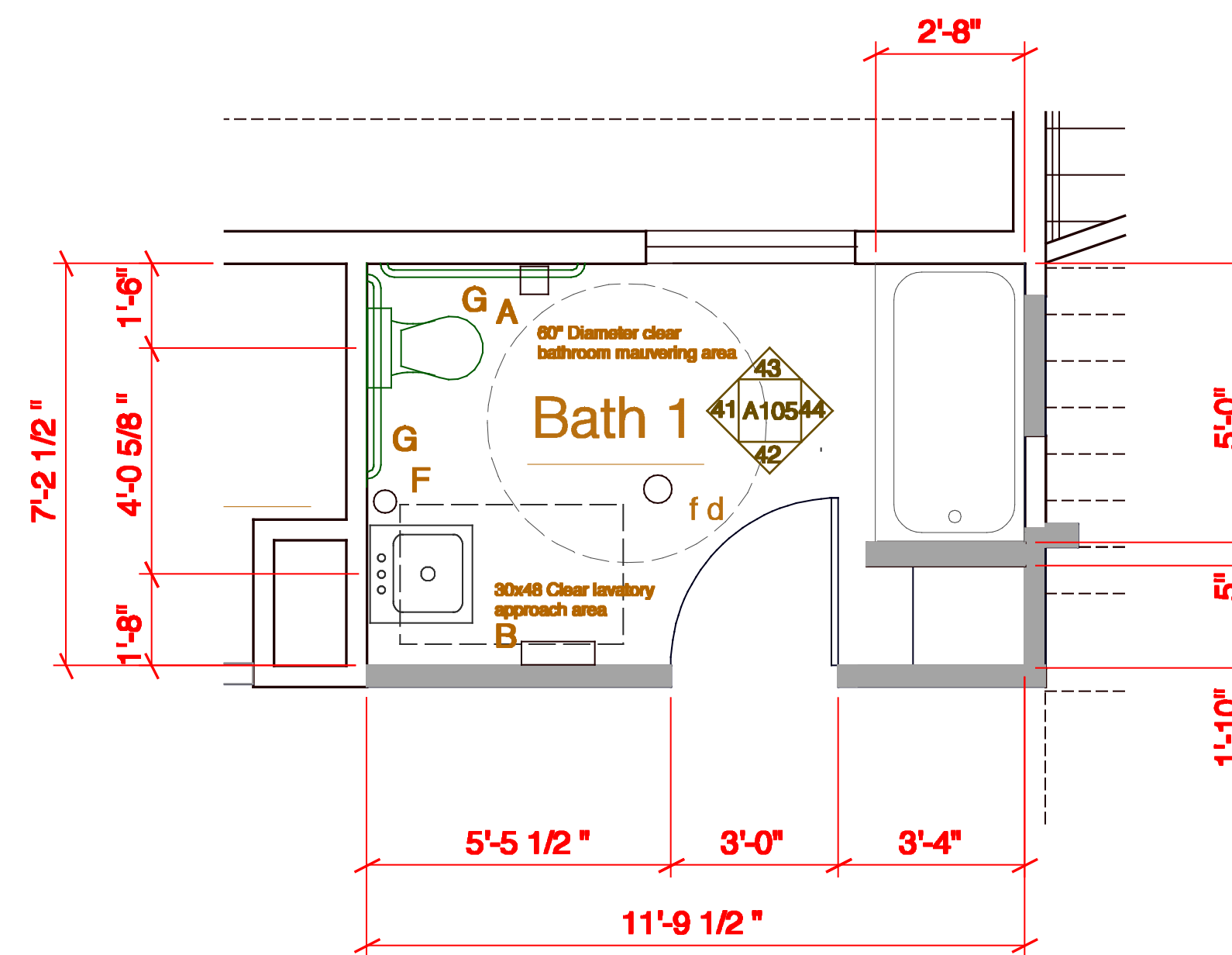
21 Partial Second Floor Plan



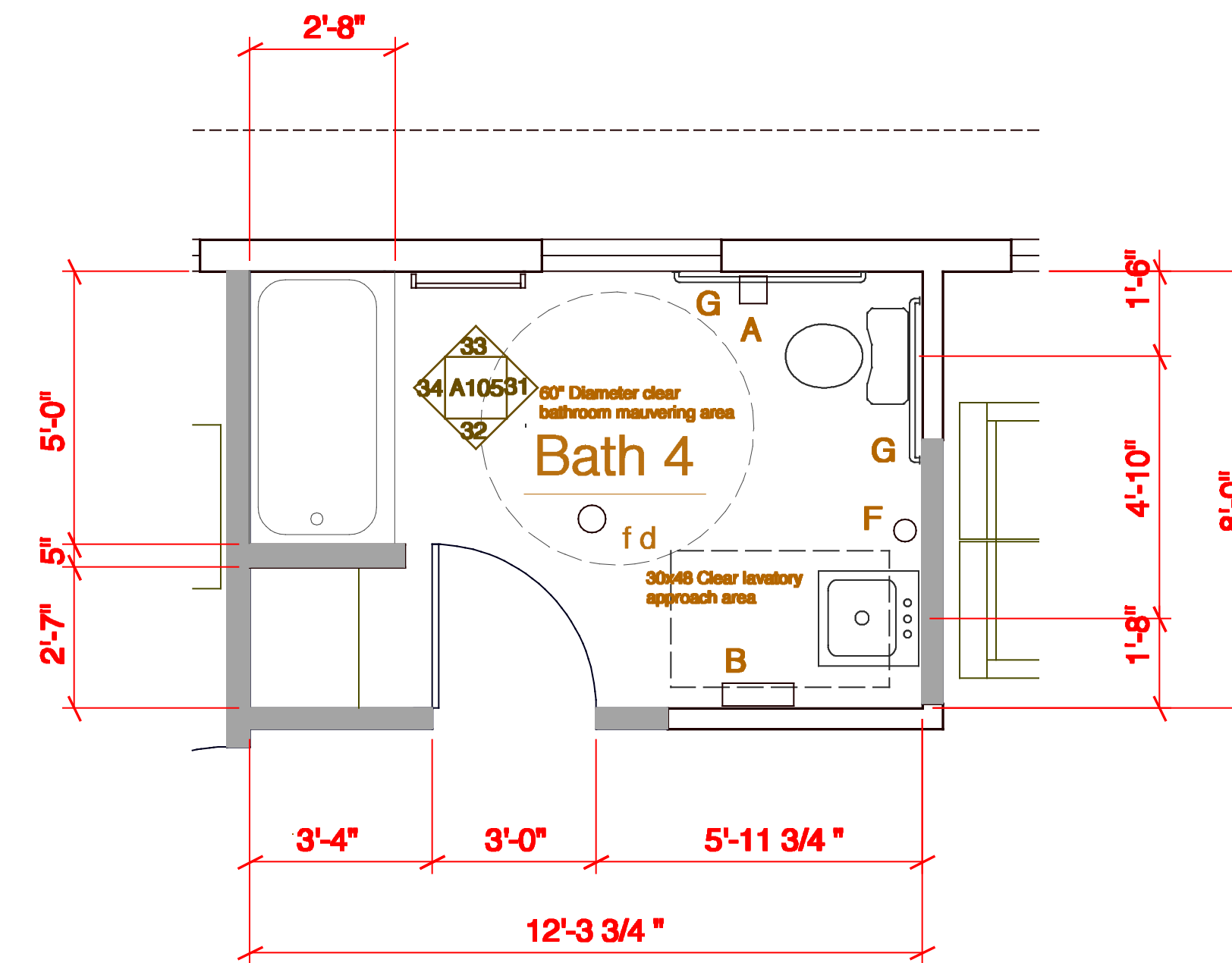
20 Partial Ground Floor Plan



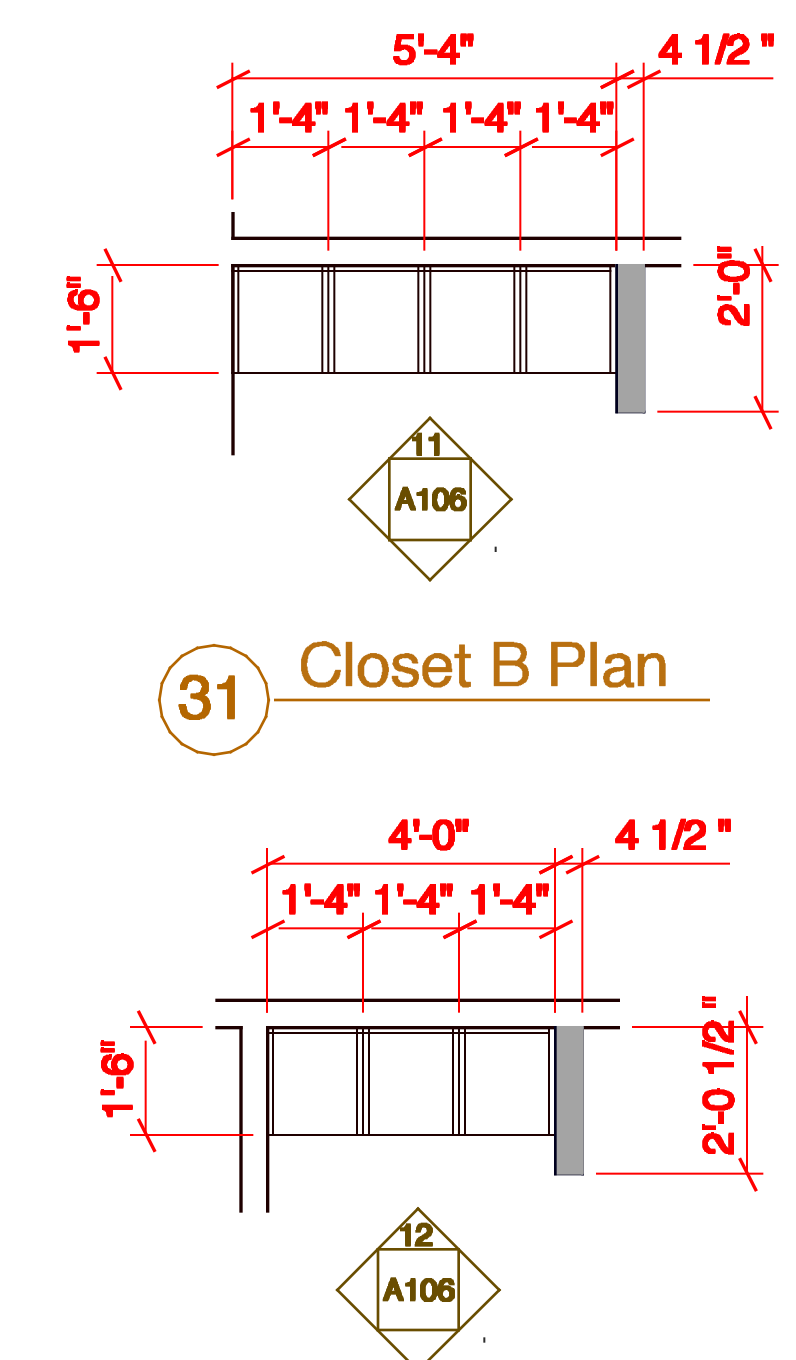
12 Partial Second Floor Plan



11 Partial Second Floor Plan



10 Partial Third Floor Plan



30 Closet A Plan

31 Closet B Plan

