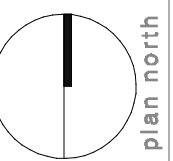
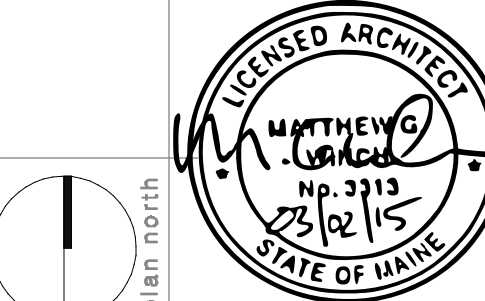


date	none
Revisions	NONE

project name
**Spurwink Services
Kaufman House
Renovation**

project location
899 Riverside Street
Portland, Maine



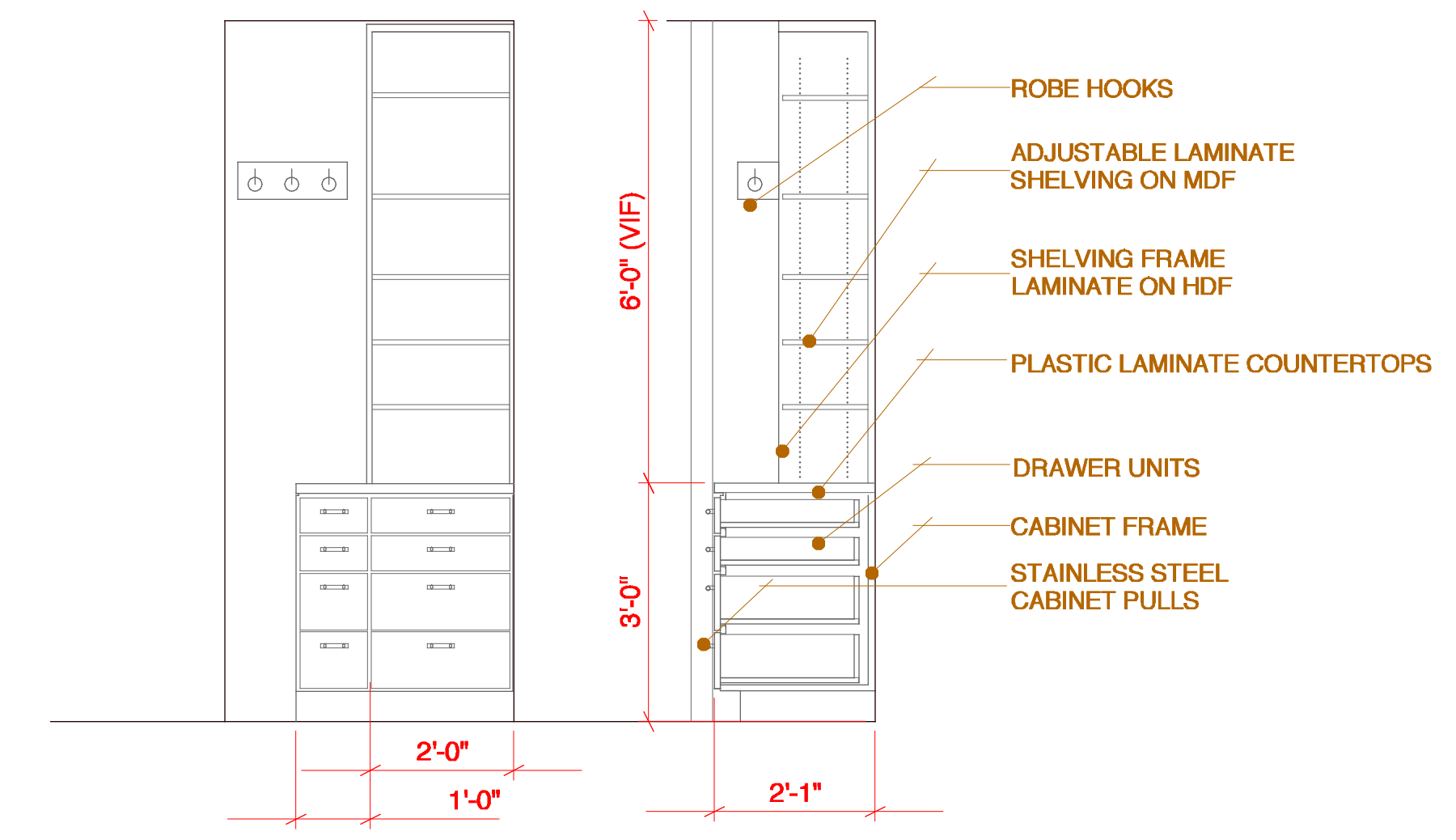
date
March 2, 2015

scale
1/4" = 1'-0"

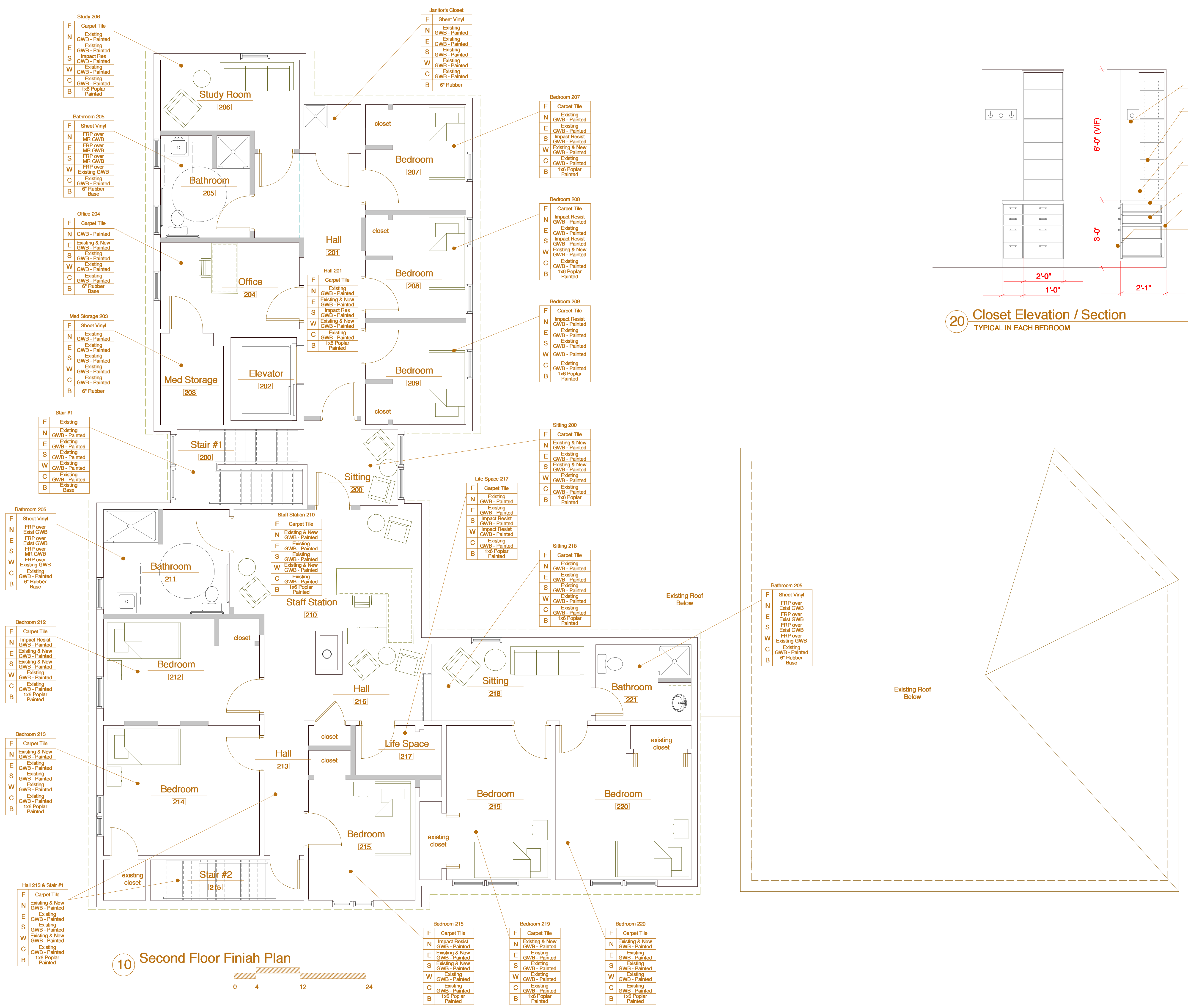
project #
2014-011

drawing title
**Second Floor
Finish Plan**

drawing number
A902



20 Closet Elevation / Section
TYPICAL IN EACH BEDROOM



10 Second Floor Finish Plan



- Study 206**
- F Carpet Tile
 - N Existing GWB - Painted
 - E Existing GWB - Painted
 - S Impact Resist GWB - Painted
 - W Existing GWB - Painted
 - C Existing GWB - Painted
 - B 1x6 Poplar Painted

- Janitor's Closet**
- F Sheet Vinyl
 - N Existing GWB - Painted
 - E Existing GWB - Painted
 - S Existing GWB - Painted
 - W Existing GWB - Painted
 - C Existing GWB - Painted
 - B 6" Rubber

- Bedroom 207**
- F Carpet Tile
 - N Existing GWB - Painted
 - E Existing GWB - Painted
 - S Impact Resist GWB - Painted
 - W Existing & New GWB - Painted
 - C Existing GWB - Painted
 - B 1x6 Poplar Painted

- Bedroom 208**
- F Carpet Tile
 - N Impact Resist GWB - Painted
 - E Existing GWB - Painted
 - S Impact Resist GWB - Painted
 - W Existing & New GWB - Painted
 - C Existing GWB - Painted
 - B 1x6 Poplar Painted

- Bedroom 209**
- F Carpet Tile
 - N Impact Resist GWB - Painted
 - E Existing GWB - Painted
 - S Existing GWB - Painted
 - W GWB - Painted
 - C Existing GWB - Painted
 - B 1x6 Poplar Painted

- Sitting 200**
- F Carpet Tile
 - N Existing & New GWB - Painted
 - E Existing GWB - Painted
 - S Existing & New GWB - Painted
 - W Existing GWB - Painted
 - C Existing GWB - Painted
 - B 1x6 Poplar Painted

- Life Space 217**
- F Carpet Tile
 - N Existing GWB - Painted
 - E Existing GWB - Painted
 - S Impact Resist GWB - Painted
 - W Impact Resist GWB - Painted
 - C GWB - Painted
 - B 1x6 Poplar Painted

- Sitting 218**
- F Carpet Tile
 - N Existing GWB - Painted
 - E Existing GWB - Painted
 - S Existing GWB - Painted
 - W Existing GWB - Painted
 - C Existing GWB - Painted
 - B 1x6 Poplar Painted

- Bathroom 205**
- F Sheet Vinyl
 - N FRP over MR GWB
 - E FRP over MR GWB
 - S FRP over MR GWB
 - W FRP over Existing GWB
 - C Existing GWB - Painted
 - B 6" Rubber Base

- Office 204**
- F Carpet Tile
 - N GWB - Painted
 - E Existing & New GWB - Painted
 - S Existing GWB - Painted
 - W Existing GWB - Painted
 - C Existing GWB - Painted
 - B 6" Rubber Base

- Med Storage 203**
- F Sheet Vinyl
 - N Existing GWB - Painted
 - E Existing GWB - Painted
 - S Existing GWB - Painted
 - W Existing GWB - Painted
 - C Existing GWB - Painted
 - B 6" Rubber

- Stair #1**
- F Existing
 - N Existing GWB - Painted
 - E Existing GWB - Painted
 - S Existing GWB - Painted
 - W Existing GWB - Painted
 - C Existing GWB - Painted
 - B Existing Base

- Bathroom 205**
- F Sheet Vinyl
 - N FRP over Exist GWB
 - E FRP over Exist GWB
 - S FRP over MR GWB
 - W FRP over Existing GWB
 - C Existing GWB - Painted
 - B 6" Rubber Base

- Bedroom 212**
- F Carpet Tile
 - N Impact Resist GWB - Painted
 - E Existing & New GWB - Painted
 - S Existing & New GWB - Painted
 - W Existing GWB - Painted
 - C Existing GWB - Painted
 - B 1x6 Poplar Painted

- Bedroom 213**
- F Carpet Tile
 - N Existing & New GWB - Painted
 - E Existing GWB - Painted
 - S Existing GWB - Painted
 - W Existing GWB - Painted
 - C Existing GWB - Painted
 - B 1x6 Poplar Painted

- Hall 213 & Stair #1**
- F Carpet Tile
 - N Existing & New GWB - Painted
 - E Existing GWB - Painted
 - S Existing GWB - Painted
 - W Existing GWB - Painted
 - C Existing GWB - Painted
 - B 1x6 Poplar Painted

- Staff Station 210**
- F Carpet Tile
 - N Existing & New GWB - Painted
 - E Existing GWB - Painted
 - S Existing GWB - Painted
 - W Existing & New GWB - Painted
 - C Existing GWB - Painted
 - B 1x6 Poplar Painted

- Bedroom 215**
- F Carpet Tile
 - N Impact Resist GWB - Painted
 - E Existing & New GWB - Painted
 - S Existing & New GWB - Painted
 - W Existing GWB - Painted
 - C Existing GWB - Painted
 - B 1x6 Poplar Painted

- Bedroom 219**
- F Carpet Tile
 - N Existing & New GWB - Painted
 - E Existing GWB - Painted
 - S Existing & New GWB - Painted
 - W Existing GWB - Painted
 - C Existing GWB - Painted
 - B 1x6 Poplar Painted

- Bedroom 220**
- F Carpet Tile
 - N Existing & New GWB - Painted
 - E Existing GWB - Painted
 - S Existing GWB - Painted
 - W Existing GWB - Painted
 - C Existing GWB - Painted
 - B 1x6 Poplar Painted