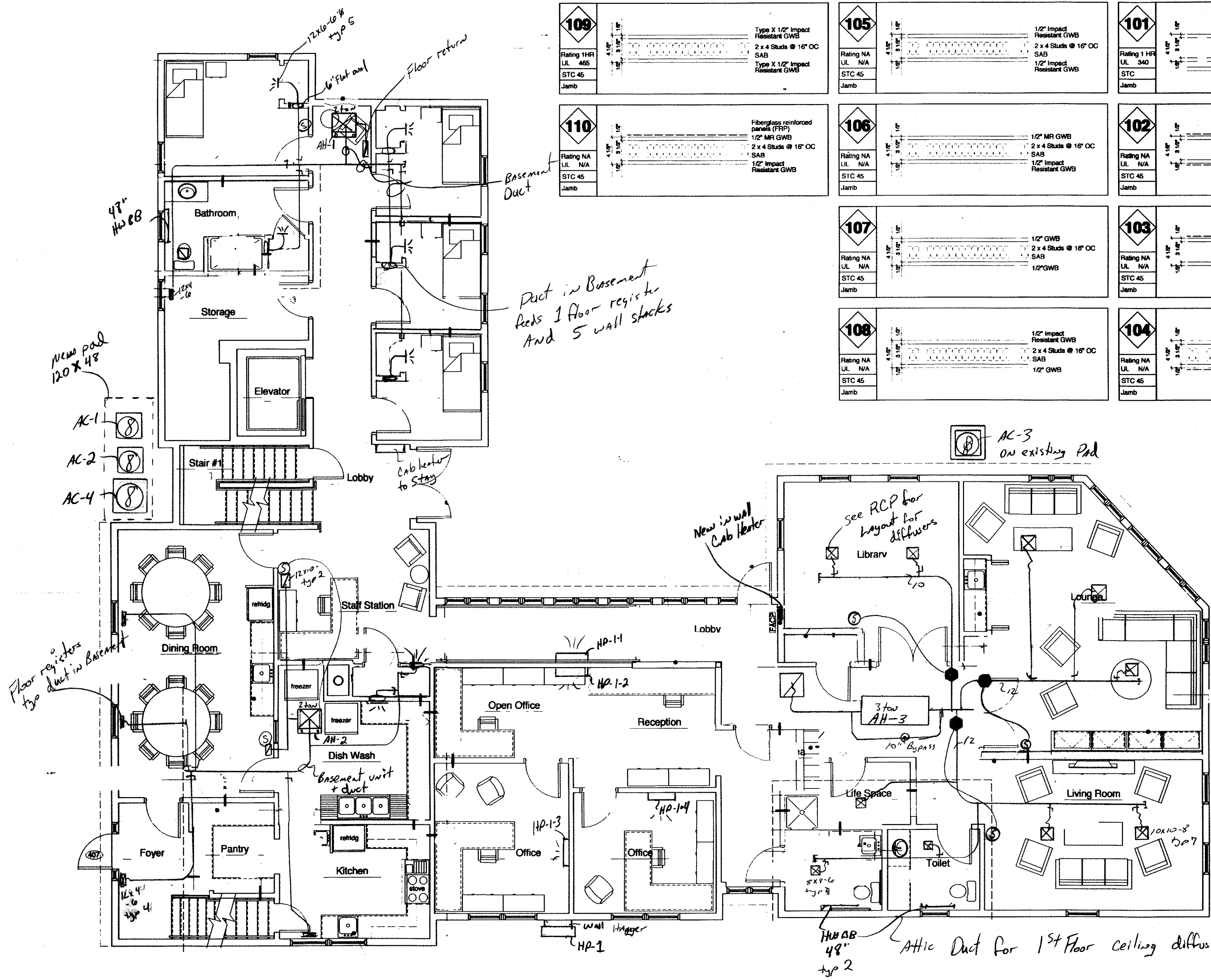


109 Rating 1HR UL 465 STC 45 Jamb		Type X 1/2" Impact Resistant GWB 2 x 4 Studs @ 16" OC SAB Type X 1/2" Impact Resistant GWB
105 Rating NA UL N/A STC 45 Jamb		1/2" Impact Resistant GWB 2 x 4 Studs @ 16" OC SAB 1/2" Impact Resistant GWB
101 Rating 1 HR UL 340 STC Jamb		Existing 1/2" GWB Existing 2 x 4 Studs @ 16" OC 1/2" Furring @ 16" OC 1/2" Impact Resistant GWB
110 Rating NA UL N/A STC 45 Jamb		Fiberglass reinforced panels (FRP) 1/2" MR GWB 2 x 4 Studs @ 16" OC SAB 1/2" Impact Resistant GWB
106 Rating NA UL N/A STC 45 Jamb		1/2" MR GWB 2 x 4 Studs @ 16" OC SAB 1/2" Impact Resistant GWB
102 Rating NA UL N/A STC 45 Jamb		Fiberglass reinforced panels (FRP) Existing 1/2" GWB Existing 2 x 4 Studs @ 16" OC Existing 1/2" GWB Fiberglass reinforced panels (FRP)
107 Rating NA UL N/A STC 45 Jamb		1/2" GWB 2 x 4 Studs @ 16" OC SAB 1/2" GWB
103 Rating NA UL N/A STC 45 Jamb		Fiberglass reinforced panels (FRP) Existing 1/2" GWB Existing 2 x 4 Studs @ 16" OC Existing 1/2" GWB
108 Rating NA UL N/A STC 45 Jamb		1/2" Impact Resistant GWB 2 x 4 Studs @ 16" OC SAB 1/2" GWB
104 Rating NA UL N/A STC 45 Jamb		1/2" GWB 2 x 4 Studs @ 16" OC SAB 1/2" MR GWB Fiberglass reinforced panels (FRP)



10 First Floor Plan
0 2 6 12

Duct in Basement feeds 1 floor registers And 5 wall stacks

Floor registers type duct in basement

Attic Duct for 1st Floor ceiling diffusers

HVAC 48" typ 2

New in wall Cab Heater

see RCP for layout for diffusers

basement unit + duct

AC-3 on existing pad

48" HW 88

new pad 120 x 48

12x16-16 typ 5

Floor return

Basement Duct

Cab heater to stay

Bathroom

Storage

Elevator

Stair #1

Lobby

Dining Room

Staff Station

Open Office

Reception

Foyer

Pantry

Kitchen

Office

Office

Life Space

Living Room

Toilet

Lounge

Lobby

Wall Hanger HP-1

HP-1-3

HP-1-4

HP-1-1

HP-1-2

3 ton AH-3

10" Bypass

8x7-6 typ 3

10x10-8 typ 7

10