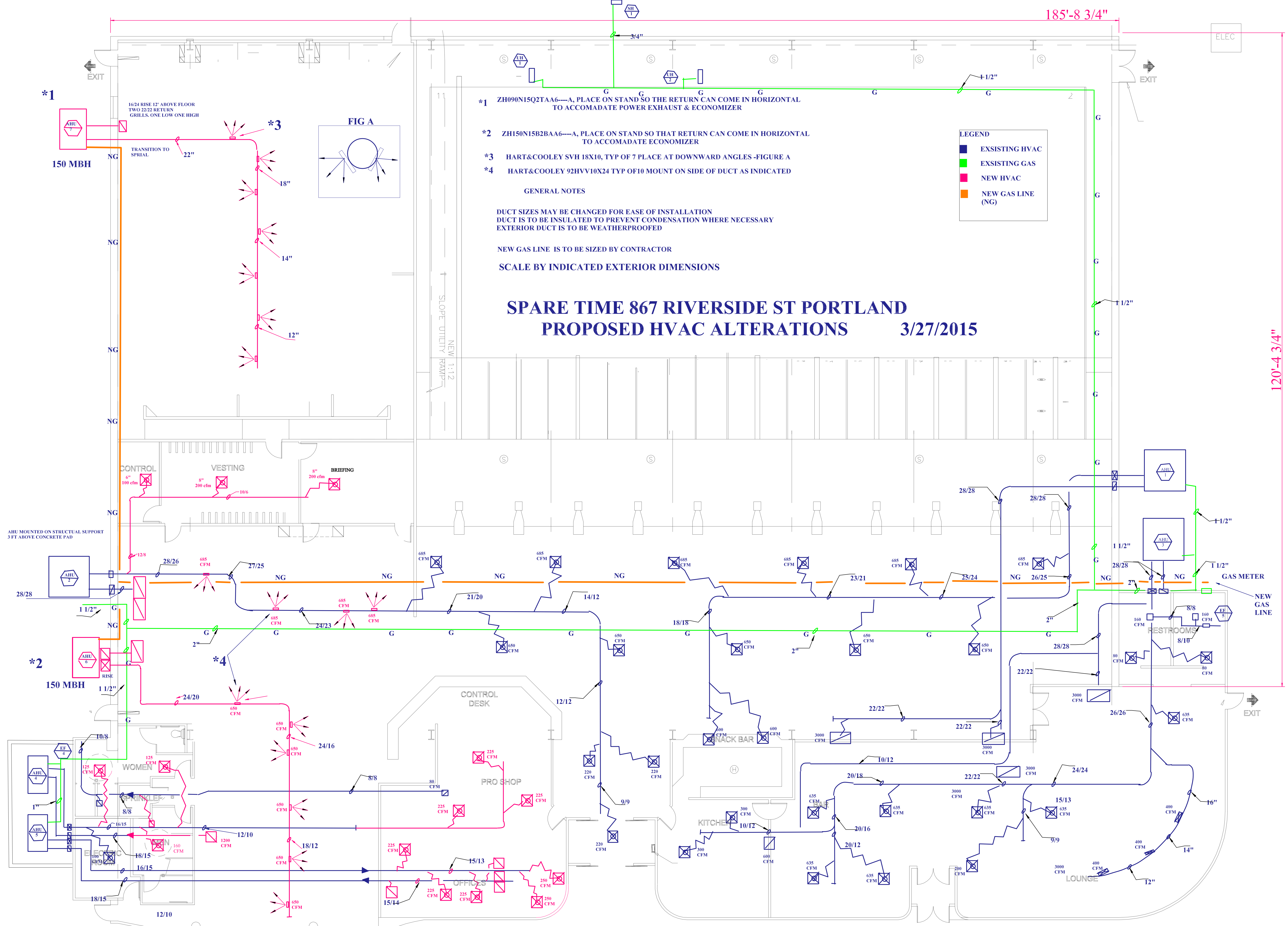


185'-8 3/4"

ELEC

120'-4 3/4"



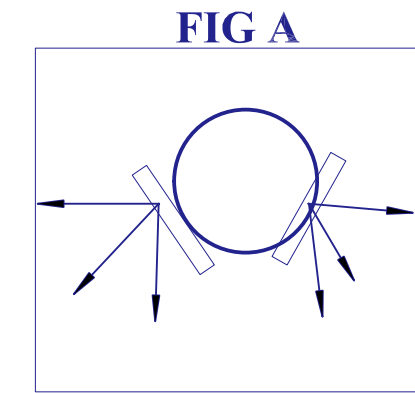
*1

1624 RISE 12" ABOVE FLOOR
TWO 2223 RETURN
GRILLS, ONE LOW ONE HIGH

150 MBH

TRANSITION TO
SPIRAL

*3



*1 ZH090N15Q2TAA6---A, PLACE ON STAND SO THE RETURN CAN COME IN HORIZONTAL
TO ACCOMADATE POWER EXHAUST & ECONOMIZER

*2 ZH150N15B2BAA6---A, PLACE ON STAND SO THAT RETURN CAN COME IN HORIZONTAL
TO ACCOMADATE ECONOMIZER

*3 HART&COOLEY SVH 18X10, TYP OF 7 PLACE AT DOWNWARD ANGLES -FIGURE A

*4 HART&COOLEY 92HVV10X24 TYP OF10 MOUNT ON SIDE OF DUCT AS INDICATED

LEGEND

- EXISTING HVAC
- EXISTING GAS
- NEW HVAC
- NEW GAS LINE (NG)

GENERAL NOTES

DUCT SIZES MAY BE CHANGED FOR EASE OF INSTALLATION
DUCT IS TO BE INSULATED TO PREVENT CONDENSATION WHERE NECESSARY
EXTERIOR DUCT IS TO BE WEATHERPROOFED

NEW GAS LINE IS TO BE SIZED BY CONTRACTOR

SCALE BY INDICATED EXTERIOR DIMENSIONS

SPARE TIME 867 RIVERSIDE ST PORTLAND PROPOSED HVAC ALTERATIONS 3/27/2015

NEW 1:1.2
SLOPE UTILITY RAMP

AHU MOUNTED ON STRUCTURAL SUPPORT
3 FT ABOVE CONCRETE PAD

*2

150 MBH

*4

GAS METER

NEW GAS LINE

EXIT