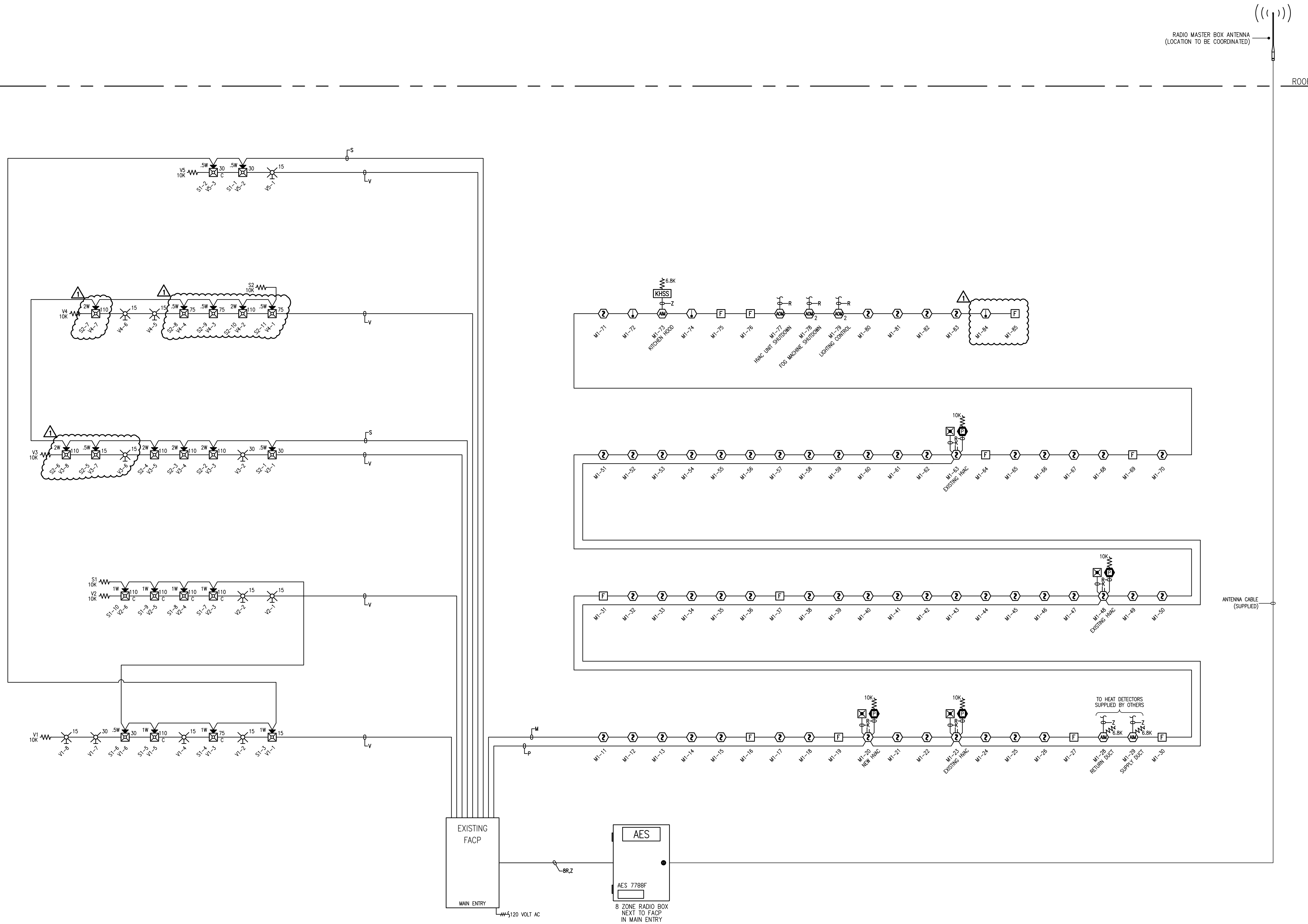


ROOF

ROOF



SPARE TIME RECREATION - RISER DIAGRAM

SPARE TIME RECREATION - RISER DIAGRAM

ISSUE NO.	DATE	BY	CHK	DESCRIPTION
1	8/12/15	MD	SK	REVISED PER ADDITION OF MAINTENANCE SHEET

DRAWN BY:	MD
CHECKED BY:	SK
ISSUE DATE:	8/12/15
JOB #:	
PROJECT #:	147-985922501
SIMPLEXGRINNELL © 2015	
SYSTEM: FIRE ALARM SYSTEM	

IMPORTANT NOTICE TO USER: This drawing is the property of SimplexGrinnell. It is to be used only for the project and location specified. The licensee indemnifies the licensee for all claims, damages, and losses, including attorney's fees, arising from any and all claims for loss, damage, or injury resulting from the use of this drawing. No part of this drawing may be reproduced, stored in a retrieval system, or transmitted in any form or by any means, electronic, mechanical, photocopying, recording, or by any information storage and retrieval system, without the prior written permission of SimplexGrinnell. SimplexGrinnell reserves all rights in this drawing. SimplexGrinnell disclaims all liability for the use of this drawing.

ENET CHANNEL M1	Address	Device Type	Point Type	Location Description	SWITCH SETTINGS	Variable	ENET CHANNEL M1	Address	SWITCH SETTINGS
					1 2 3 4 5 6 7 8	9			1 2 3 4 5 6 7 8
M1-1					X		M1-126		X
M1-2					X		M1-127		X
M1-3					X		M1-128		X
M1-4					X		M1-129		X
M1-5					X		M1-130		X
M1-6					X		M1-131		X
M1-7					X		M1-132		X
M1-8					X		M1-133		X
M1-9					X		M1-134		X
M1-10					X		M1-135		X
M1-11	PHOTO	SMOKE	MAN ENTRY		1-11	X	M1-136		X
M1-12	PHOTO	SMOKE	CONTROL DESK AREA		1-12	X	M1-137		X
M1-13	PHOTO	SMOKE	CONTROL DESK AREA		1-13	X	M1-138		X
M1-14	PHOTO	SMOKE	ARCADE GAMES AREA		1-14	X	M1-139		X
M1-15	PHOTO	SMOKE	ARCADE GAMES AREA		1-15	X	M1-140		X
M1-16	ADRPUL	PULL	ARCADE GAMES AREA		1-16	X	M1-141		X
M1-17	PHOTO	SMOKE	ARCADE GAMES AREA		1-17	X	M1-142		X
M1-18	PHOTO	SMOKE	ARCADE GAMES AREA		1-18	X	M1-143		X
M1-19	ADRPUL	PULL	ARCADE GAMES AREA		1-19	X	M1-144		X
M1-20	RPHOTO	SDUCT	ARCADE GAMES AREA-NEW HVAC		1-20	X	M1-145		X
M1-21	PHOTO	SMOKE	ARCADE GAMES AREA		1-21	X	M1-146		X
M1-22	PHOTO	SMOKE	ARCADE GAMES AREA		1-22	X	M1-147		X
M1-23	RPHOTO	SDUCT	ARCADE GAMES AREA-EXISTING HVAC		1-23	X	M1-148		X
M1-24	PHOTO	SMOKE	CONTROL ROOM		1-24	X	M1-149		X
M1-25	PHOTO	SMOKE	VESTING ROOM		1-25	X	M1-150		X
M1-26	PHOTO	SMOKE	BRIEFING ROOM		1-26	X	M1-151		X
M1-27	ADRPUL	PULL	LASER TAG ARENA		1-27	X	M1-152		X
M1-28	IMM	HEAT	LASER TAG ARENA-RETURN DUCT HEAT		1-28	X	M1-153		X
M1-29	IMM	HEAT	LASER TAG ARENA-SUPPLY DUCT HEAT		1-29	X	M1-154		X
M1-30	ADRPUL	PULL	LASER TAG ARENA		1-30	X	M1-155		X
M1-31	ADRPUL	PULL	LASER TAG ARENA		1-31	X	M1-156		X
M1-32	PHOTO	SMOKE	BOWLING AREA		1-32	X	M1-157		X
M1-33	PHOTO	SMOKE	BOWLING AREA		1-33	X	M1-158		X
M1-34	PHOTO	SMOKE	BOWLING AREA		1-34	X	M1-159		X
M1-35	PHOTO	SMOKE	BOWLING AREA		1-35	X	M1-160		X
M1-36	PHOTO	SMOKE	BOWLING AREA		1-36	X	M1-161		X
M1-37	ADRPUL	PULL	BOWLING AREA EXIT		1-37	X	M1-162		X
M1-38	PHOTO	SMOKE	BOWLING AREA		1-38	X	M1-163		X
M1-39	PHOTO	SMOKE	BOWLING AREA		1-39	X	M1-164		X
M1-40	PHOTO	SMOKE	BOWLING AREA		1-40	X	M1-165		X
M1-41	PHOTO	SMOKE	BOWLING AREA		1-41	X	M1-166		X
M1-42	PHOTO	SMOKE	BOWLING AREA		1-42	X	M1-167		X
M1-43	PHOTO	SMOKE	BOWLING AREA		1-43	X	M1-168		X
M1-44	PHOTO	SMOKE	BOWLING AREA		1-44	X	M1-169		X
M1-45	PHOTO	SMOKE	BOWLING AREA		1-45	X	M1-170		X
M1-46	PHOTO	SMOKE	BOWLING AREA		1-46	X	M1-171		X
M1-47	PHOTO	SMOKE	BOWLING AREA		1-47	X	M1-172		X
M1-48	RPHOTO	SDUCT	BOWLING AREA-EXISTING HVAC		1-48	X	M1-173		X
M1-49	PHOTO	SMOKE	BOWLING AREA		1-49	X	M1-174		X
M1-50	PHOTO	SMOKE	BOWLING AREA		1-50	X	M1-175		X
M1-51	PHOTO	SMOKE	BOWLING AREA		1-51	X	M1-176		X
M1-52	PHOTO	SMOKE	BOWLING AREA		1-52	X	M1-177		X
M1-53	PHOTO	SMOKE	BOWLING AREA		1-53	X	M1-178		X
M1-54	PHOTO	SMOKE	BOWLING AREA		1-54	X	M1-179		X
M1-55	PHOTO	SMOKE	BOWLING AREA		1-55	X	M1-180		X
M1-56	PHOTO	SMOKE	BOWLING AREA		1-56	X	M1-181		X
M1-57	PHOTO	SMOKE	BOWLING AREA		1-57	X	M1-182		X
M1-58	PHOTO	SMOKE	BOWLING AREA		1-58	X	M1-183		X
M1-59	PHOTO	SMOKE	BOWLING AREA		1-59	X	M1-184		X
M1-60	PHOTO	SMOKE	BOWLING AREA		1-60	X	M1-185		X
M1-61	PHOTO	SMOKE	BOWLING AREA		1-61	X	M1-186		X
M1-62	PHOTO	SMOKE	BOWLING AREA		1-62	X	M1-187		X
M1-63	RPHOTO	SDUCT	RESTROOMS		1-63	X	M1-188		X
M1-64	ADRPUL	PULL	BAR & GRILL LOUNGE		1-64	X	M1-189		X
M1-65	PHOTO	SMOKE	BAR & GRILL LOUNGE		1-65	X	M1-190		X
M1-66	PHOTO	SMOKE	BAR & GRILL LOUNGE		1-66	X	M1-191		X
M1-67	PHOTO	SMOKE	BAR & GRILL LOUNGE		1-67	X	M1-192		X
M1-68	PHOTO	SMOKE	BAR & GRILL LOUNGE		1-68	X	M1-193		X
M1-69	ADRPUL	PULL	BAR & GRILL LOUNGE		1-69	X	M1-194		X
M1-70	PHOTO	SMOKE	BAR & GRILL LOUNGE		1-70	X	M1-195		X
M1-71	PHOTO	SMOKE	BAR & GRILL LOUNGE		1-71	X	M1-196		X
M1-72	HEAT	HEAT	KITCHEN		1-72	X	M1-197		X
M1-73	IMM	LATSUPV	KITCHEN HOOD		1-73	X	M1-198		X
M1-74	HEAT	HEAT	SNACK BAR		1-74	X	M1-199		X
M1-75	ADRPUL	PULL	KITCHEN		1-75	X	M1-200		X
M1-76	ADRPUL	PULL	BOWLING AREA		1-76	X	M1-201		X
M1-77	RIAM	RELAY	LASER TAG AREA-HVAC UNIT SHUTDOWN		1-77	X	M1-202		X
M1-78	RIAM	RELAY	LASER TAG AREA-FOG MACHINE SHUTDOWN		1-78	X	M1-203		X
M1-79	RIAM	RELAY	LASER TAG AREA-LIGHTING CONTROL		1-79	X	M1-204		X
M1-80	PHOTO	SMOKE	MANAGER		1-80	X	M1-205		X
M1-81	PHOTO	SMOKE	ACCOUNTING SAFE ROOM		1-81	X	M1-206		X
M1-82	PHOTO	SMOKE	ARCADE GAMES AREA		1-82	X	M1-207		X
M1-83	PHOTO	SMOKE	ARCADE GAMES AREA		1-83	X	M1-208		X
M1-84	HEAT	HEAT	MAINTENANCE SHED		1-84	X	M1-209		X
M1-85	ADRPUL	PULL	MAINTENANCE SHED		1-85	X	M1-210		X
M1-86							M1-211		X
M1-87							M1-212		X
M1-88							M1-213		X
M1-89							M1-214		X
M1-90							M1-215		X
M1-91							M1-216		X
M1-92							M1-217		X
M1-93							M1-218		X
M1-94							M1-219		X
M1-95							M1-220		X
M1-96							M1-221		X
M1-97							M1-222		X
M1-98							M1-223		X
M1-99							M1-224		X
M1-100							M1-225		X
M1-101							M1-226		X
M1-102							M1-227		X
M1-103							M1-228		X
M1-104							M1-229		X
M1-105							M1-230		X
M1-106							M1-231		X
M1-107							M1-232		X
M1-108							M1-233		X
M1-109							M1-234		X
M1-110							M1-235		X
M1-111							M1-236		X
M1-112							M1-237		X
M1-113							M1-238		X
M1-114							M1-239		X
M1-115							M1-240		X
M1-116							M1-241		X
M1-117							M1-242		X
M1-118							M1-243		X
M1-119							M1-244		X
M1-120							M1-245		X
M1-121							M1-246		X
M1-122							M1-247		X
M1-123							M1-248		X
M1-124							M1-249		X
M1-125							M1-250		X

Module	Qty	Description	Standby Current	Total Standby	Alarm Current	Total Alarm
4100-8201	1	CONTROL PANEL W/AUDIO	0.000000	0.000000	0.000	0.000000
4100-4001	1	SIG MOD 2 CKT CLASS B W/O SUPPRESSION	0.016000	0.016000	0.033	0.033000
4100-0210	2	SINGLE CHANNEL AUDIO CONTROL	0.185000	0.370000	0.185	0.370000
4100-5004	3	8 ZONE STYLE B	0.075000	0.225000	0.195	0.585000
4100-5005	3	ZONE MODULE, 8 D.C. CLASS B	0.075000	0.225000	0.195	0.585000
4100-4321	4	6 CIRCUIT CLASS B (STYLE V)	0.025000	0.100000	0.070	0.280000
4100-6005	6	MASTER CONTROLLER POWER SUPPLY	0.000000	0.000000	0.000	0.000000
4100-1284	1	8 SW, 16 RED/GREEN LED MODULE	0.000000	0.000000	0.024	0.024000
4100-3206	1	8 RELAYS - 3 AMP	0.015000	0.015000	0.190	0.190000
		Total Panel Stby	0.951000	0.951000	0.000	2.067000

Module	Qty	Description	Standby Current	Total Standby	Alarm Current	Total Alarm
4298-9774	51	TRUEALARM PHOTO SMOKE SENSOR	0.000000	0.000000	0.000	0.000000
4298-9733	2	TRUEALARM HEAT SENSOR	0.000000	0.000000	0.000	0.000000
4098-9792	53	TRUEALARM SENSOR BASE	0.000000	0.000000	0.000	0.000000
4090-9001	3	IDNET SUPERVEID IMM	0.000000	0.000000	0.000	0.000000
4090-9810	3	BRACKET, IMM	0.000000	0.000000	0.000	0.000000
4090-9806	3	COVER-ADDRESS MODULE FLUSH	0.000000	0.000000	0.000	0.000000
4090-9002	1	IDNET RELAY IMM	0.000000	0.000000	0.000	0.000000
4098-9756	4	TRUEALARM DUCT SMOKE SENSOR W/ RELAY OUTPUT	0.000000	0.012000	0.015	0.060000
2098-9806	4	REMOTE TEST STATION W/ LED AND KEY SWITCH	0.000000	0.000000	0.000	0.000000

Module	Qty	Description	Standby Current	Total Standby	Alarm Current	Total Alarm	
4906-9103	9	V/O M-C NON-ADDRESS, WHT, WALL	15cd	0.000000	0.000000	0.063	0.477000
4906-9103	2	V/O M-C NON-ADDRESS, WHT, WALL	30cd	0.000000	0.000000	0.084	0.168000
4906-9153	3	S/V M-C NON-ADDRESS, WHT, WALL	15cd	0.000000	0.000000	0.063	0.168000
4906-9153	3	S/V M-C NON-ADDRESS, WHT, WALL	30cd	0.000000	0.000000	0.084	0.252000
4906-9153	3	S/V M-C NON-ADDRESS, WHT, WALL	75cd	0.000000	0.000000	0.165	0.495000
4906-9153	6	S/V M-C NON-ADDRESS, WHT, WALL	110cd	0.000000	0.000000	0.224	1.344000
4906-9154	1	S/V M-C NON-ADDRESS, WHT, CELL	30cd	0.000000	0.000000	0.111	0.111000
4906-9154	1	S/V M-C NON-ADDRESS, WHT, CELL	75cd	0.000000	0.000000	0.207	0.207000
4906-9154	5	S/V M-C NON-ADDRESS, WHT, CELL	110cd	0.000000	0.000000	0.281	1.405000

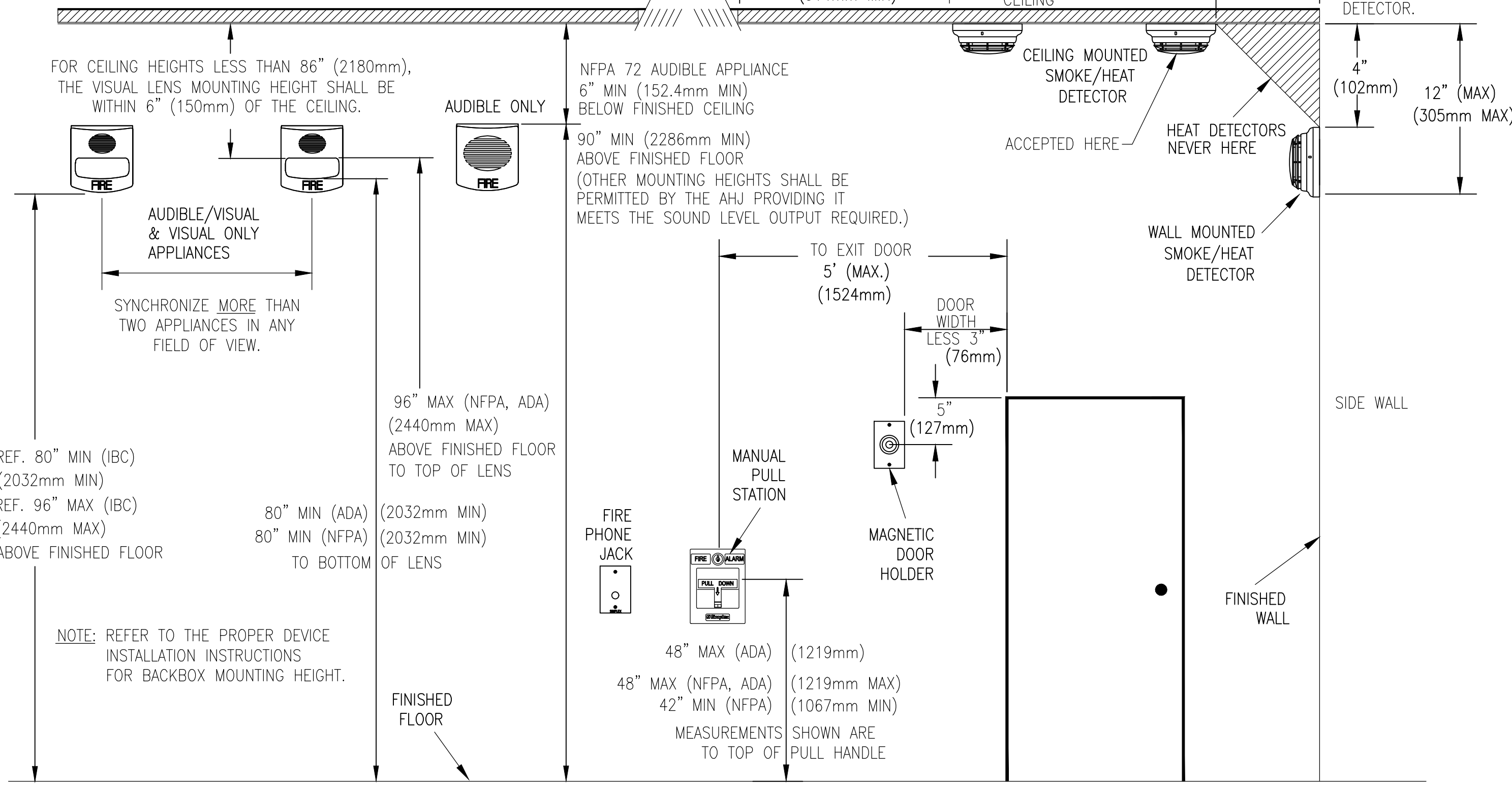
Battery Set #	1 (Cabinet/Charger #1)	Qty	Current	Current
Control Panel Power (Master Power Supply)			0.951	2.067
Magnet/DNet Core Current Draw		0	0.000	0.000
Current Draw For 90 Watt Or 100 Watt Amplifiers		0	0.000	0.000
Current Draw For Dual 25 Watt Amplifiers		0	0.000	0.000
Power For External Peripheral Devices		0.062000	0.062000	4.725000
Additional Current Draws			1.013	6.792
Magnet/DNet Device Addresses ordered / used	61	61.0	0.049	0.061
Spare addressable point capacity included for battery calc	0%	0	0.000	0.000
Additional Battery Capacity Required	10%		1.062	6.853
Standby Time =	24 Hrs		28.332	Standby Ah
Alarm Time =	15 Mins		1.885	Alarm Ah
Minimum Battery Required	2081-9296 50AH		35.899	20% Safety Margin

Wire Resistance Based on Table 8 from National Electrical Code (Uncoated Solid Copper Wire)

DEVICE MOUNTING HEIGHT REFERENCE (PER NFPA 72)

VISUAL APPLIANCE MOUNTING HEIGHT CONSIDERATIONS IN SLEEPING ROOMS

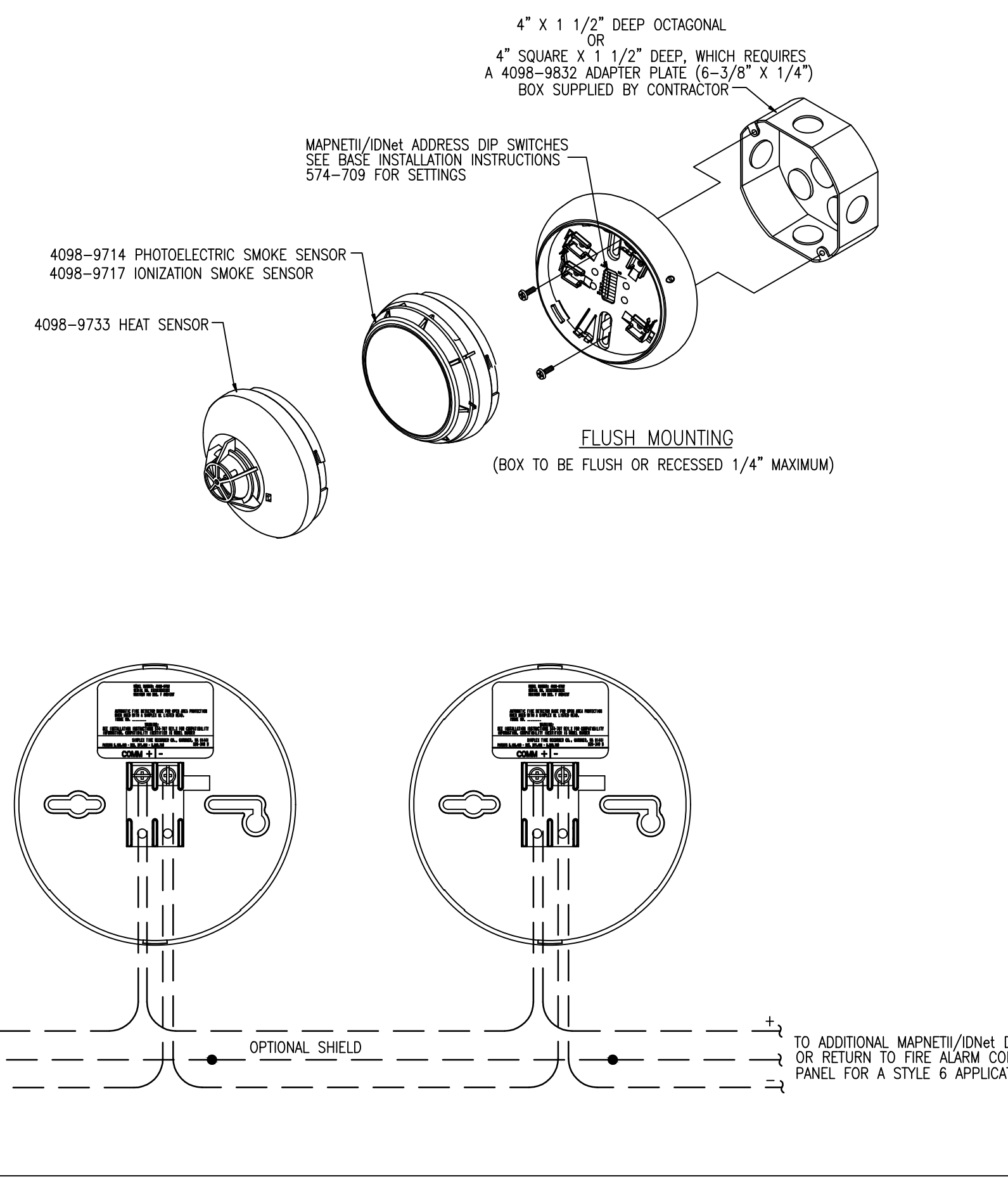
- MIN DISTANCE IN SLEEPING ROOMS IS 24" (610mm) FROM CEILING TO TOP OF LENS FOR 110CD STROBES WITHIN 16' OF THE PILLOW
- 177CD STROBES, USED IN SLEEPING ROOMS, CAN BE WITHIN THE 24" (610mm) MINIMUM DISTANCE FROM THE CEILING. THE HIGHER INTENSITY IS TO COMPENSATE FOR A POSSIBLE SMOKE LAYER.



PRODUCT INFORMATION 4098-9792 STANDARD SENSOR BASE

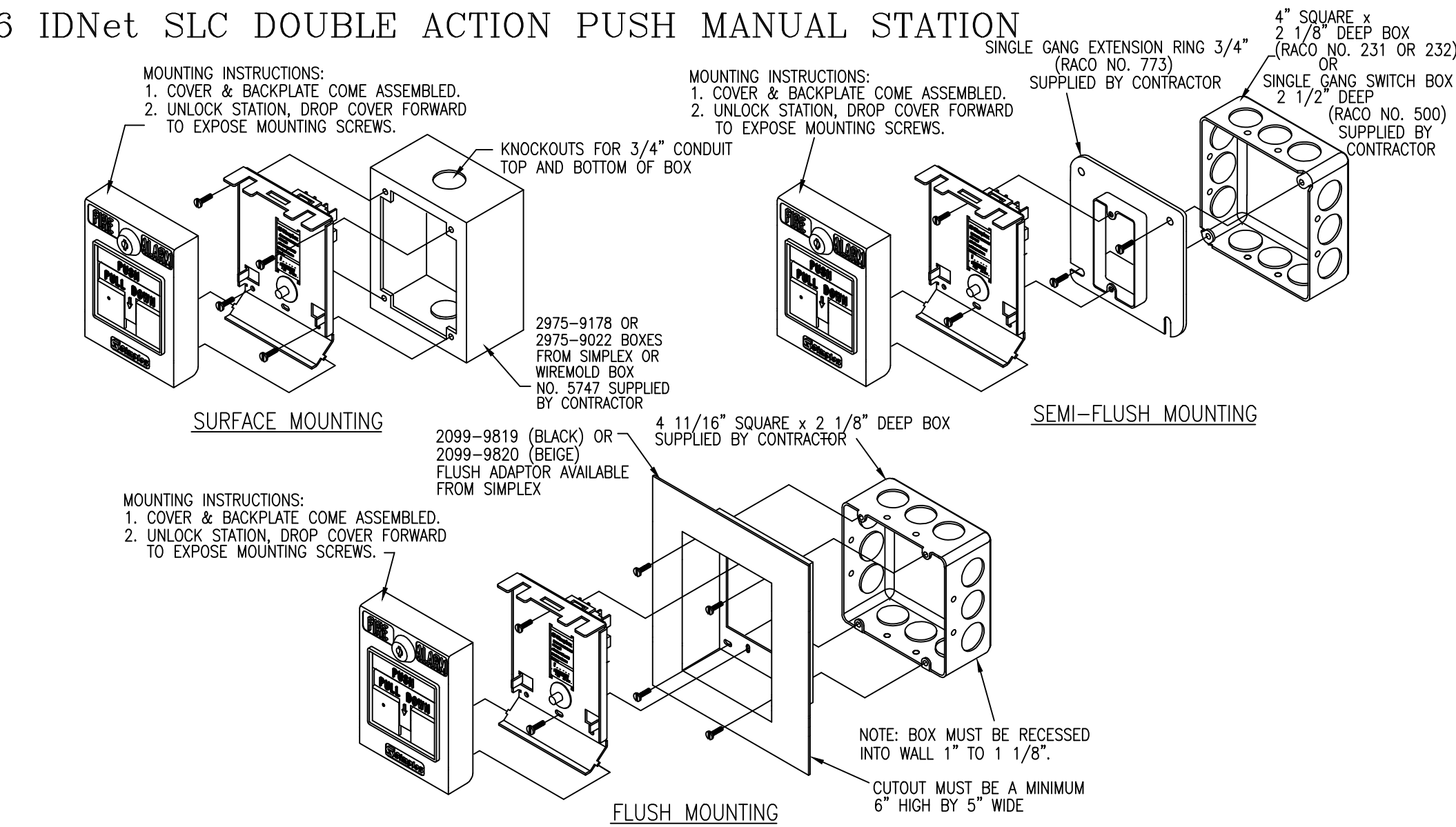
- FEATURES:
- UL LISTED, FM APPROVED
 - TRUEALARM ANALOG SENSING PROVIDES DIGITAL TRANSMISSION OF ANALOG SENSOR VALUES VIA MAPNET/IDNet OR IDNet SLC TWO WIRE COMMUNICATIONS
 - FIRE ALARM CONTROL PANEL PROVIDES:
 - INDIVIDUAL SENSITIVITY SELECTION FOR EACH SENSOR
 - PEAK VALUE LOGGING ALLOWING ACCURATE ANALYSIS FOR SENSITIVITY SELECTION
 - AUTOMATIC ENVIRONMENTAL COMPENSATION
 - DISPLAY OF SENSITIVITY IN PERCENT PER FOOT
 - MULTISTAGE ALARM OPERATION
 - ABILITY TO DISPLAY AND PRINT DETAILED SENSOR INFORMATION IN PLAIN ENGLISH LANGUAGE
 - PHOTOELECTRIC SMOKE SENSOR 4098-9714: SEVEN LEVELS OF SENSITIVITY FROM 0.2% TO 3.7%
 - IONIZATION SMOKE SENSOR 4098-9717: FOUR LEVELS OF SENSITIVITY FROM 0.5% TO 1.7%
 - HEAT SENSOR 4098-9733:
 - RATE-OF-RISE TEMPERATURE DETECTION IS SELECTABLE AT THE CONTROL PANEL FOR EITHER 15°F OR 20°F PER MINUTE
 - FIXED TEMPERATURE SENSING IS INDEPENDENT OF RATE-OF-RISE AND PROGRAMMABLE TO OPERATE AT 135°F OR 155°F
 - TRUEALARM HEAT SENSORS CAN BE PROGRAMMED AS A UTILITY DEVICE TO MONITOR FOR TEMPERATURE EXTREMES IN THE RANGE FROM 32° F TO 120° F.
 - UL STANDARD SPACING:
 - 60 FT SPACING FOR 135° F
 - 40 FT SPACING FOR 155° F
 - INTERNAL RED LED FOR POWER-ON (PULSING), OR ALARM OR TROUBLE (STEADY ON)
 - BASE MOUNTED ADDRESS SELECTION:
 - ACCESSIBLE FROM FRONT (DIP SWITCH UNDER SENSOR)
 - ADDRESS REMAINS WITH ITS PROGRAMMED LOCATION
 - FOR USE WITH SIMPLEX 4010, 4100, 4020, AND 4120 SERIES CONTROL PANELS.
 - MAXIMUM QUANTITY OF DEVICES:
 - 127 FOR 4020, 4100, 4120
 - 250 FOR 4010, 4100
 - MOUNTING: CEILING OR WALL
 - COLOR: FROST WHITE
 - BASE DIMENSIONS: 15/16" X 4-7/8"

- SPECIFICATIONS:
- UL LISTED TEMPERATURE RANGE: 32°F TO 100°F
 - OPERATING TEMPERATURE RANGE: 32°F TO 120°F
 - HUMIDITY RANGE: 10% TO 95% RH
 - PHOTOELECTRIC SMOKE SENSOR AIR VELOCITY RANGE: 0-2000 FT/MIN
 - IONIZATION SMOKE SENSOR AIR VELOCITY RANGE: 0-300 FT/MIN
 - WIRING CONNECTIONS: SCREW TERMINALS FOR IN/OUT WIRING, #18 TO #14 AWG
 - COMMUNICATIONS MAPNET/IDNet SLC: 1 ADDRESS PER BASE VOLTAGE (MAPNET/IDNet SLC): 24-40VDC CURRENT: 400uA TYPICAL
- DESCRIPTION:
- TRUEALARM SENSOR BASES CONTAIN INTEGRAL ADDRESSABLE ELECTRONICS THAT CONSTANTLY MONITOR THE STATUS OF THE DETACHABLE PHOTOELECTRIC, IONIZATION, OR HEAT SENSORS. EACH SENSOR'S OUTPUT IS DIGITIZED AND TRANSMITTED TO THE SYSTEM FIRE ALARM CONTROL PANEL EVERY FOUR SECONDS. SINCE TRUEALARM SENSORS USE THE SAME BASE, DIFFERENT SENSOR TYPES CAN BE EASILY INTERCHANGED TO MEET SPECIFIC LOCATION REQUIREMENTS. THIS FEATURE ALLOWS INTENTIONAL SENSOR SUBSTITUTION DURING BUILDING CONSTRUCTION. WHEN CONDITIONS ARE TEMPORARILY DUSTY, INSTEAD OF COVERING THE SMOKE SENSORS, HEAT SENSORS MAY BE INSTALLED WITHOUT REPROGRAMMING THE CONTROL PANEL. ALTHOUGH THE CONTROL PANEL WILL INDICATE AN INCORRECT SENSOR TYPE, THE HEAT SENSOR WILL OPERATE AS A DEFAULT SENSITIVITY PROVIDING HEAT DETECTION FOR BUILDING PROTECTION AT THAT LOCATION.
- WIRING:
- ALL WIRING TO COMPLY WITH LOCAL CODE.
 - CONDUCTORS MUST TEST FREE OF ALL GROUNDS.
 - MAINTAIN CORRECT POLARITY
 - MAPNET/IDNet SLC WIRING TO BE #18 AWG TWISTED SHIELDED PAIR
 - IF SHIELD IS PRESENT, CONNECT TO THE OUTGOING IDNet SLC SHIELD TO PROVIDE A CONTINUOUS SHIELD OVER THE LENGTH OF THE IDNet SLC CHANNEL. METHOD OF SPLICE DETERMINED BY AHJ.
 - REFER TO INSTALLATION INSTRUCTIONS (574-707)
 - REFER TO APPLICATION MANUAL (574-709)



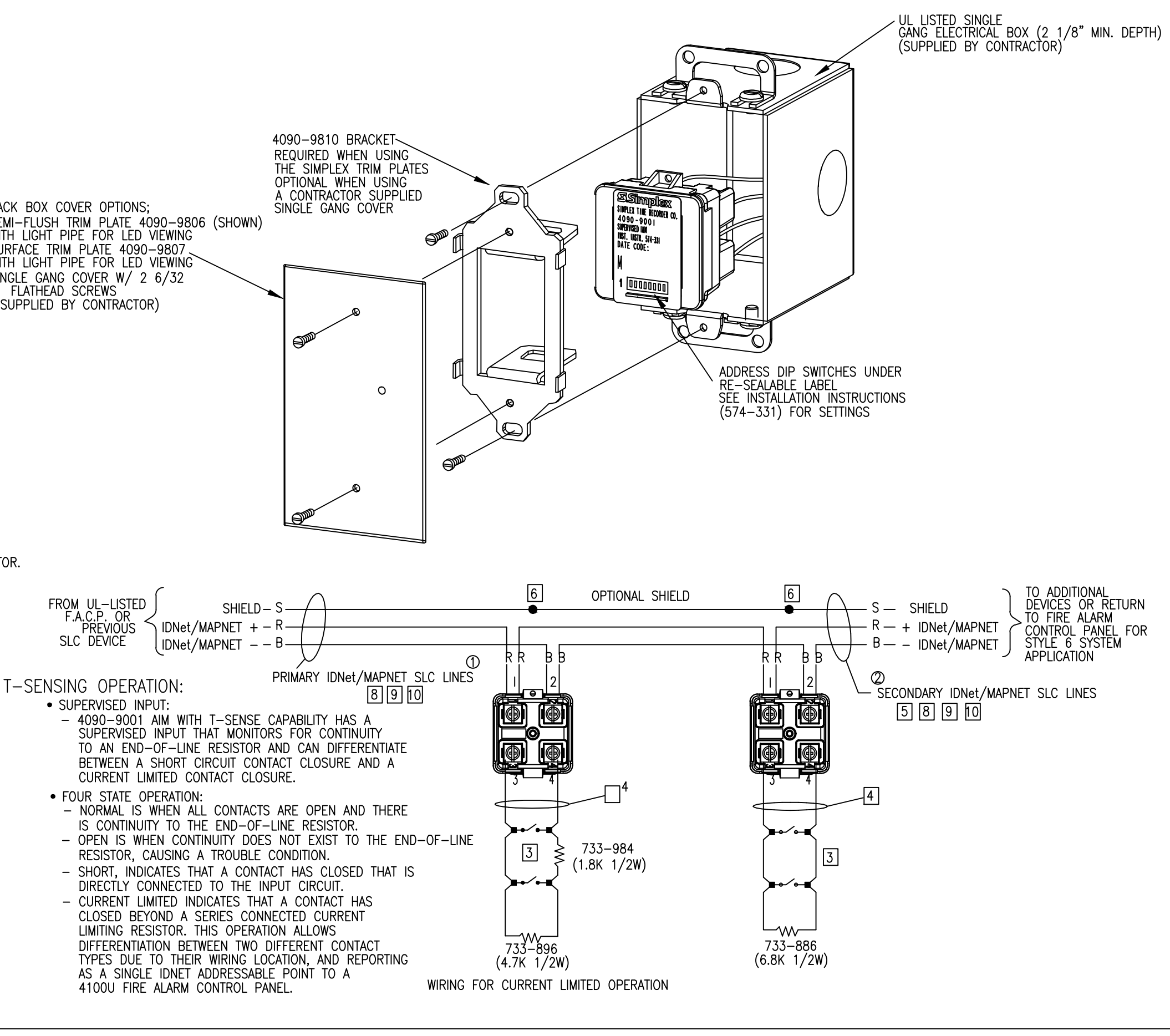
PRODUCT INFORMATION 4099-9006 IDNet SLC DOUBLE ACTION PUSH MANUAL STATION

- FEATURES:
- UL LISTED
 - DOUBLE ACTION (PUSH/PULL), IDNet SLC ADDRESSABLE
 - PULL LEVER PROTRUDES WHEN ALARMED
 - LED INDICATOR FLASHES DURING COMMUNICATION
 - TAMPER RESISTANT RESET KEY LOCK
 - MOUNTING: SEMI-FLUSH, SURFACE
 - OPERATING TEMPERATURE RANGE: 32 - 120° F
 - OPERATING HUMIDITY RANGE: 0 - 93% RH
 - ADAPTER PLATES 2099-9813 OR 2099-9814 CAN BE USED FOR RETROFIT APPLICATIONS.
 - 5" HIGH X 3 3/4" WIDE X 1" DEEP
 - SCREW TERMINALS FOR 18 TO 14 AWG WIRE
 - ADDRESSED BY MEANS OF AN 8 POSITION DIP SWITCH
 - COMPATIBLE WITH IDNet SLC/MAPNET
- OPERATION:
- ACTIVATION: 4099-9006 DOUBLE ACTION STATION REQUIRES A FIRM DOWNWARD PULL TO ACTIVATE THE ALARM SWITCH. COMPLETING THIS ACTION BREAKS AN INTERNAL PLASTIC BREAK-ROD THAT IS VISIBLE BELOW THE PULL LEVER (USE OF PLASTIC ROD IS OPTIONAL). THE PULL LEVER LATCHES INTO THE ALARM POSITION AND REMAINS EXTENDED OUT OF THE HOUSING TO PROVIDE A VISIBLE INDICATION.
- RESETTING: 4099-9006 DOUBLE ACTION STATION REQUIRES A KEY TO RESET THE ACTIVATION LEVER AND DEACTIVATE THE ALARM SWITCH. (IF OPTIONAL PLASTIC BREAK ROD WAS USED IT MUST BE REPLACED)
- CONSTRUCTION: STATION HOUSING AND PULL LEVER ARE CONSTRUCTED OF CHIP RESISTANT AND DIRT RESISTANT, HIGH IMPACT LEXAN. HOUSING IS RED WITH RAISED WHITE LETTERING AND PULL LEVER IS WHITE WITH RED RAISED LETTERING. * LEXAN IS A REGISTERED TRADEMARK OF THE GENERAL ELECTRIC CO.
- APPLICATION: PULL STATIONS SHALL BE INSTALLED IN ACCORDANCE WITH NFPA 72 AND AIA GUIDE LINES.
- INTRODUCTION: THE 4099-9006 ADDRESSABLE PULL STATION PROVIDES TWO-STATE STATUS INFORMATION (NORMAL AND SHORT) TO THE IDNet SLC COMPATIBLE FIRE ALARM CONTROL PANEL (FACP) VIA THE IDNet SLC CHANNEL. THE IDNet SLC CHANNEL PROVIDES THE COMMUNICATION LINK BETWEEN PULL STATION AND THE FACP AND POWERS THE ENTIRE CIRCUITRY.
- WIRING:
- ALL WIRING TO COMPLY WITH LOCAL CODE.
 - CONDUCTORS MUST TEST FREE OF ALL GROUNDS.
 - MAINTAIN CORRECT POLARITY
 - IDNet SLC LINES ARE TO BE 18 AWG TWISTED SHIELDED PAIR TO EXCEED 2500 FEET.
 - MAXIMUM LINE RUN FROM PANEL TO FARTHEST DEVICE NOT TO EXCEED 2500 FEET.
 - MAXIMUM TOTAL WIRE (INCLUDING ALL T-TAPS) FROM PANEL NOT TO EXCEED 10,000 FEET.
 - MAXIMUM QUANTITY OF DEVICES PER CIRCUIT: 250
 - TERMINALS 1 AND 2 FOR FIELD WIRING. TERMINALS 3 AND 4 ARE FACTORY WIRING.
 - WIRE NUT, SPLICE, OR SOLDER THE SHIELD WIRES.
 - IF SHIELD IS PRESENT, IT SHOULD BE CONNECTED TO THE OUTGOING IDNet SLC SHIELD TO PROVIDE A CONTINUOUS SHIELD OVER THE LENGTH OF THE IDNet SLC CHANNEL. SHIELD SHOULD BE INSULATED FROM THE ELECTRICAL BOX.
 - SEE INSTALLATION INSTRUCTIONS 574-332



PRODUCT INFORMATION 4090-9001 IDNET SLC, SUPERVISED ADDRESSABLE INPUT MODULE (AIM)

- FEATURES:
- UL LISTED
 - ADDRESSABLE COMMUNICATIONS SUPPLY BOTH DATA AND POWER TO PROVIDE:
 - SUPERVISED STYLE B MONITORING OF NORMALLY OPEN DRY CONTACTS.
 - COMMUNICATIONS WIRING USING ONE TWISTED, SHIELDED WIRE PAIR.
 - COMPATIBLE WITH SIMPLEX ADDRESSABLE FIRE ALARM CONTROL PANELS.
 - COMPACT, SEALED CONSTRUCTION:
 - ALLOWS MOUNTING IN A SINGLE GANG BOX
 - REDUCES DUST INFILTRATION
 - PROVIDES CURRENT LIMITED MONITORING TO MONITOR TAMPER SWITCH (SUPERVISORY) AND WATER FLOW SWITCH (ALARM) ON SAME CIRCUIT
 - REQUIRES ONLY ONE ADDRESSABLE POINT
 - SELECTABLE LATCHING OPERATION
 - MONITORS MONITOR CONTACT CLOSURES SUCH AS RATE-OF RISE HEAT DETECTORS
- SPECIFICATIONS:
- WIRE CONNECTIONS: SCREW TERMINALS FOR IN/OUT WIRING FOR WIRE FROM #18 TO #14 AWG.
 - DIMENSIONS: 1 9/16" X 1 3/4" X 1 1/4"
 - TEMPERATURE RANGE: 32° F TO 158° F (0° C TO 70° C)
 - HUMIDITY: UP TO 93% RH AT 100° F
 - SUPERVISION RESISTOR: 6.8kΩ 1/2W, (SUPPLIED) SIMPLEX PART NO. 733-886
 - RESISTOR FOR CURRENT LIMITED OPERATION: 4.7kΩ 1/2W WITH A 1.8kΩ 1/2W
 - INPUT REQUIREMENTS: NORMALLY OPEN, DRY CONTACTS
 - HOUSING MATERIAL: BLACK THERMOPLASTIC
- DESCRIPTION:
- THE 4090-9001 IS AN ADDRESSABLE INPUT MODULE (AIM) WITH POWER AND COMMUNICATIONS SUPPLIED BY A TWO WIRE ADDRESSABLE CIRCUIT. IT PROVIDES LOCATION SPECIFIC ADDRESSABILITY TO A SINGLE INITIATING DEVICE (SUCH AS SINGLE STATION SMOKE DETECTOR ALARM CONTACTS OR HEAT DETECTOR CONTACTS) OR MULTIPLE DEVICES AT THE SAME LOCATION BY MONITORING NORMALLY OPEN, DRY CONTACTS AND THE WIRING TO AN END-OF-LINE RESISTOR. IF THE INITIATING DEVICE CONTACTS ARE MOMENTARY, SUCH AS FROM A RATE-OF-RISE HEAT DETECTOR, CAUSING THE LATCH FEATURE WILL MAINTAIN THE ALARM CONDITION UNTIL THE SYSTEM IS RESET. FOR APPLICATIONS WHERE THE CONTACT CLOSURE LATCHES, OR IF THIS CONDITION NEEDS TO BE TRIGGERED AT THE CONTROL PANEL NON-LATCHING OPERATION MAY BE ENABLED.
- WIRING NOTES:
- ALL WIRING TO COMPLY WITH LOCAL CODE.
 - CONDUCTORS MUST TEST FREE OF ALL GROUNDS.
 - ONLY N.O. DRY CONTACTS ARE ALLOWED.
 - MAXIMUM WIRE LENGTH (AND 18 AWG) IS 400 FT. W/2081-9044 OVER VOLTAGE PROTECTORS OR 400 FT. W/O PROTECTORS
 - A MAXIMUM QUANTITY OF DEVICES PER CIRCUIT: CONTROL PANEL MODULE DEPENDENT
 - IF SHIELD IS PRESENT, CONNECT TO THE OUTGOING IDNet SLC SHIELD TO PROVIDE A CONTINUOUS SHIELD OVER THE LENGTH OF THE IDNet CHANNEL. METHOD OF SPLICE DETERMINED BY AHJ.
 - REFER TO INSTALLATION INSTRUCTIONS 574-331.
 - MAXIMUM ALLOWABLE LINE RUN FROM THE F.A.C.P. TO THE FARTHEST DEVICE, NOT TO EXCEED 2500 FEET.
 - MAXIMUM TOTAL WIRE (INCLUDING ALL T-TAPS) FROM THE FIRE ALARM CONTROL PANEL
 - FOR STYLE 6 CIRCUIT WIRING IT IS RECOMMENDED THAT THE PRIMARY (1) AND THE BACK-UP (2) LINES BE IN SEPARATE WIRE RUNS AND IN COMPLIANCE WITH LOCAL REQUIREMENTS.
 - REFER TO FIELD WIRING DIAGRAM 842-073



tyco SimplexGrinnell
Safer. Smarter. Tyco.

DISTRICT - 147
WESTERBROOK, MAINE 04092
SERVICE: 207-842-8440
PHONE: 207-842-8440
FAX: 207-842-8439

SPARE TIME RECREATION-LASER TAG AMUSEMENT

SPARE TIME RECREATION-LASER TAG AMUSEMENT
867 RIVERSIDE STREET
PORTLAND, MAINE 04103-1070

ISSUE NO.	DATE	CHKD	DESCRIPTION	REVISION	BY	DATE
1	8/15/15	SK	REVISED PER ADDITION OF MAINTENANCE SHEET			

DRAWN BY: MD
CHECKED BY: SK
ISSUE DATE: 8/12/15
JOB #: 147-985922501
PROJECT #: 147-985922501
SIMPLEXGRINNELL © 2015
SYSTEM: FIRE ALARM SYSTEM
SHEET: WIRING TYPICALS

FA-701

FILE PATH: W:\Northern New England Design Team\147\Spare Time Recreation\REV1\REV1 Fire Alarm Drawings\FA-701.dwg
LAST SAVED BY: MDESJATA
LAST PRINTED: 9/15/2015 10:33:48 AM
24 x 36" Arch D Size

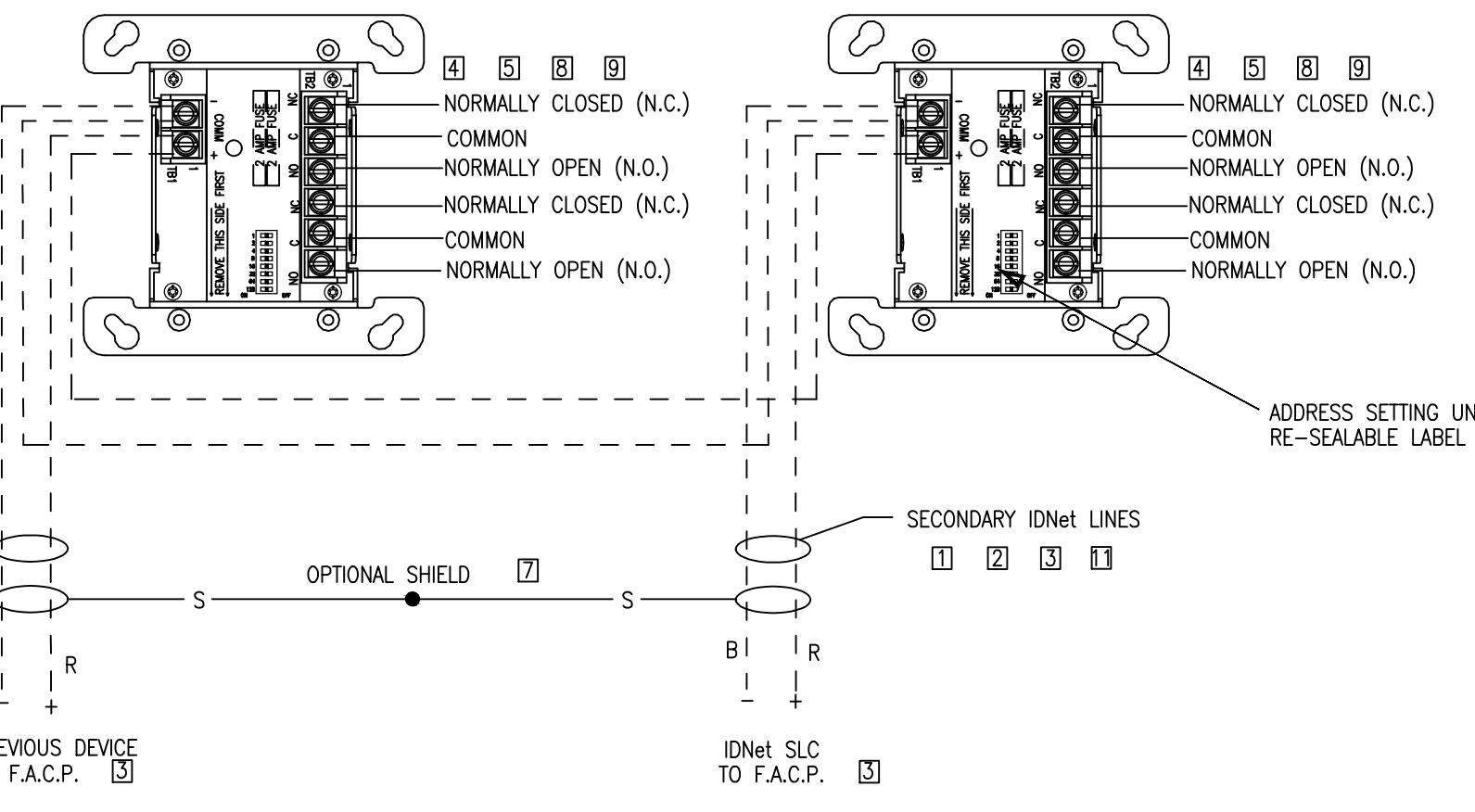
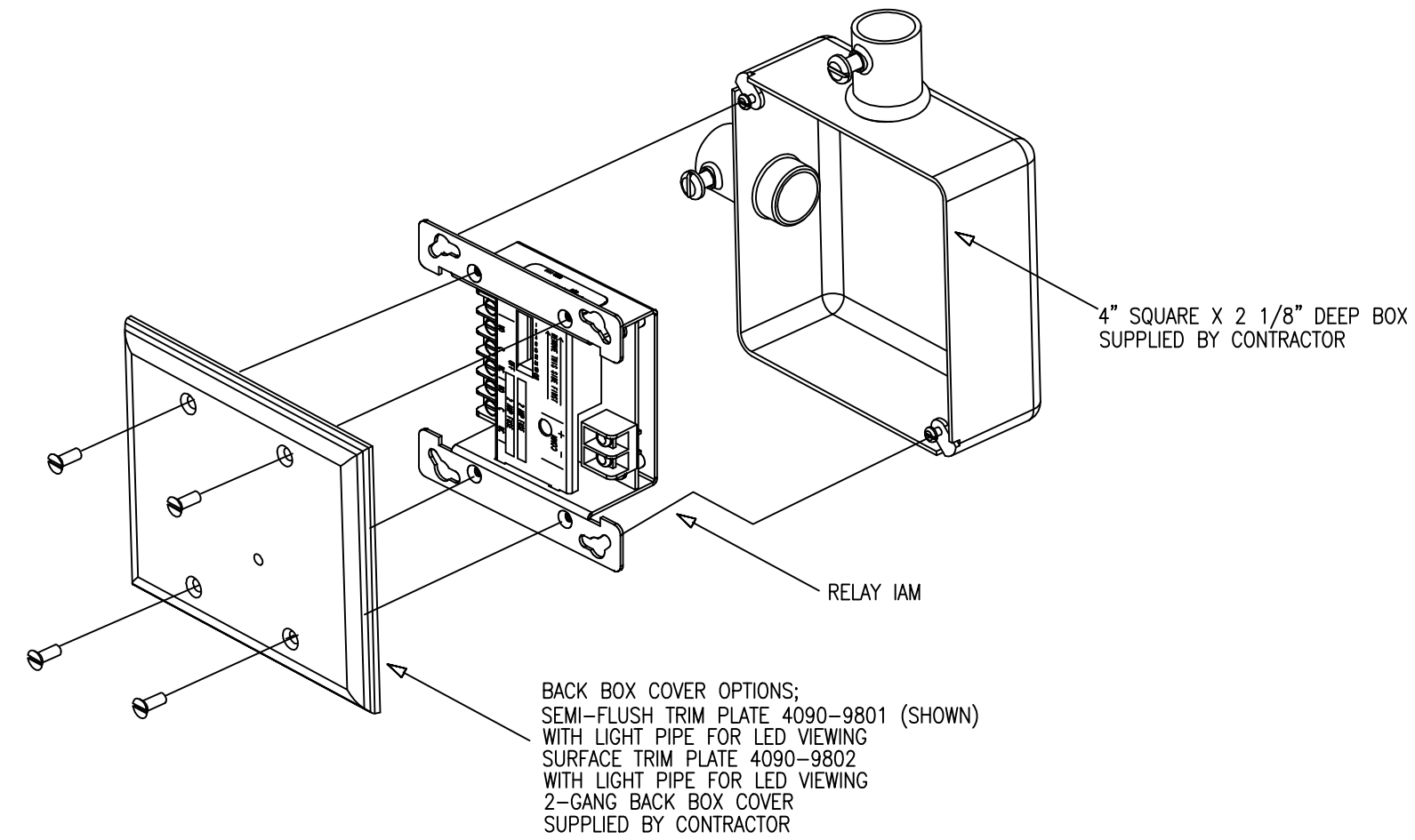
PRODUCT INFORMATION

4090-9008 IDNet SLC, DUAL RELAY, ADDRESSABLE OUTPUT MODULE (AOM)

- FEATURES:
- UL LISTED
 - A SINGLE ADDRESSABLE POINT BOTH CONTROLS TWO 2A FORM "C" CONTACT AND TRACKS ITS STATUS
 - COMPATIBLE WITH SIMPLEX MODEL 4010 AND 4100 ADDRESSABLE FIRE ALARM CONTROL PANEL
 - LATCHING RELAY DESIGN ALLOWS DATA AND POWER TO BE BOTH SUPPLIED BY IDNet SLC COMMUNICATIONS
 - COMPACT, SEALED CONSTRUCTION:
 - SCREW TERMINALS FOR WIRING CONNECTIONS
 - REDUCES DUST INFILTRATION
- SPECIFICATIONS:
- RELAY IAM POWER: SUPPLIED BY IDNet SLC COMMUNICATIONS
 - RELAY AOM CONTACTS (FORM "C", SPDT)
 - POWER LIMITED RATING: 2A @ 24VDC, TRANSIENT SUPPRESSED LOADS, 1A @ 24VDC FOR INDUCTIVE LOADS
 - NON POWER LIMITED RATING: 1/2A @ 24VAC, TRANSIENT SUPPRESSED LOADS, 1A @ 24 VDC FOR INDUCTIVE LOADS
 - WIRE CONNECTIONS: SCREW TERMINALS FOR IN/OUT WIRING, #18 TO #14 AWG WIRE
 - COMPATIBLE WITH SIMPLEX 2081-9044 OVER VOLTAGE PROTECTORS
 - DIMENSIONS: 4 1/8" H x 4 1/8" W x 1 3/8" D (105mm x 105mm x 35mm)
 - HOUSING MATERIAL: BLACK THERMOPLASTIC
 - MOUNTING PLATE MATERIAL: SHEET METAL, GALVANIZED
 - TEMPERATURE RANGE: 32° F TO 120° F (0° C TO 49° C) INTENDED FOR INDOOR OPERATION
 - HUMIDITY RANGE UP TO 93% RH AT 100° F (38° C)

DESCRIPTION:
IDNet SLC RELAY MODULES ALLOW THE SIMPLEX FIRE ALARM CONTROL PANEL TO CONTROL A REMOTELY LOCATED FORM "C" CONTACT USING IDNet ADDRESSABLE COMMUNICATIONS FOR BOTH DATA AND POWER. TYPICAL APPLICATIONS WOULD BE FOR SWITCHING LOCAL POWER FOR CONTROL FUNCTIONS SUCH AS ELEVATOR CAPTURE, OR CONTROL OF HVAC COMPONENTS, PRESSURIZATION FANS, DAMPERS, ETC. RELAY STATUS IS ALSO COMMUNICATED REQUIRING ONLY ONE DEVICE ADDRESS.

- WIRING NOTES:
- IDNet SLC LINES ARE TO BE #18 AWG TWISTED PAIR (CONSULT SC SALES ENGINEERING FOR EXCEPTIONS) SHIELD RECOMMENDED.
 - MAXIMUM ALLOWABLE LINE RUN, FROM THE F.A.C.P. TO THE FARTHEST DEVICE, NOT TO EXCEED 2500 FEET.
 - MAXIMUM QUANTITY OF DEVICES PER CIRCUIT: CONTROL PANEL MODULE DEPENDENT.
 - CONTRACTOR WIRING TO RELAY CONTACTS IS UNSUPERVISED. USE #14 AWG WIRE TO LOCAL CODE.
 - RELAY CONTACTS RATED 2A, 24VDC (1A FOR INDUCTIVE LOAD) RELAY CONTACTS RATED 0.5A 120VAC (NON POWER LIMITED) FOR POWER-LIMITED OPERATION, POWER MUST BE PROVIDED FROM FACP OR POWER-LIMITED POWER SUPPLY LISTED FOR FIRE PROTECTIVE SIGNALING USE.
 - SEE INSTALLATION INSTRUCTIONS 574-184.
 - IF SHIELD IS PRESENT, CONNECT TO THE OUTGOING IDNet SHIELD TO PROVIDE A CONTINUOUS SHIELD OVER THE LENGTH OF THE IDNet CHANNEL. METHOD OF SPLICE DETERMINED BY AHJ.
 - WHEN CONNECTED TO A NON POWER-LIMITED SOURCE, THE WIRING MUST MAINTAIN A MINIMUM 1/4 INCH SEPARATION FROM IDNet WIRING.
 - WHEN USED WITH NON POWER-LIMITED SOURCE, THE "POWER LIMITED WIRING" INDICATION ON THE DEVICE LABEL MUST BE OBLITERATED.
 - WHEN BOTH POWER-LIMITED AND NON POWER-LIMITED SOURCES ARE PRESENT, USE TYPE FPL, FPLR OR FPLP POWER LIMITED CABLE FOR POWER-LIMITED CIRCUITS.
 - MAXIMUM TOTAL WIRE (INCLUDING ALL T-TAPS) ON CIRCUIT, FROM THE F.A.C.P., NOT TO EXCEED 10,000 FEET OR .58uF. (CLASS B ONLY) REFER TO FIELD WIRING DIAGRAM 842-073



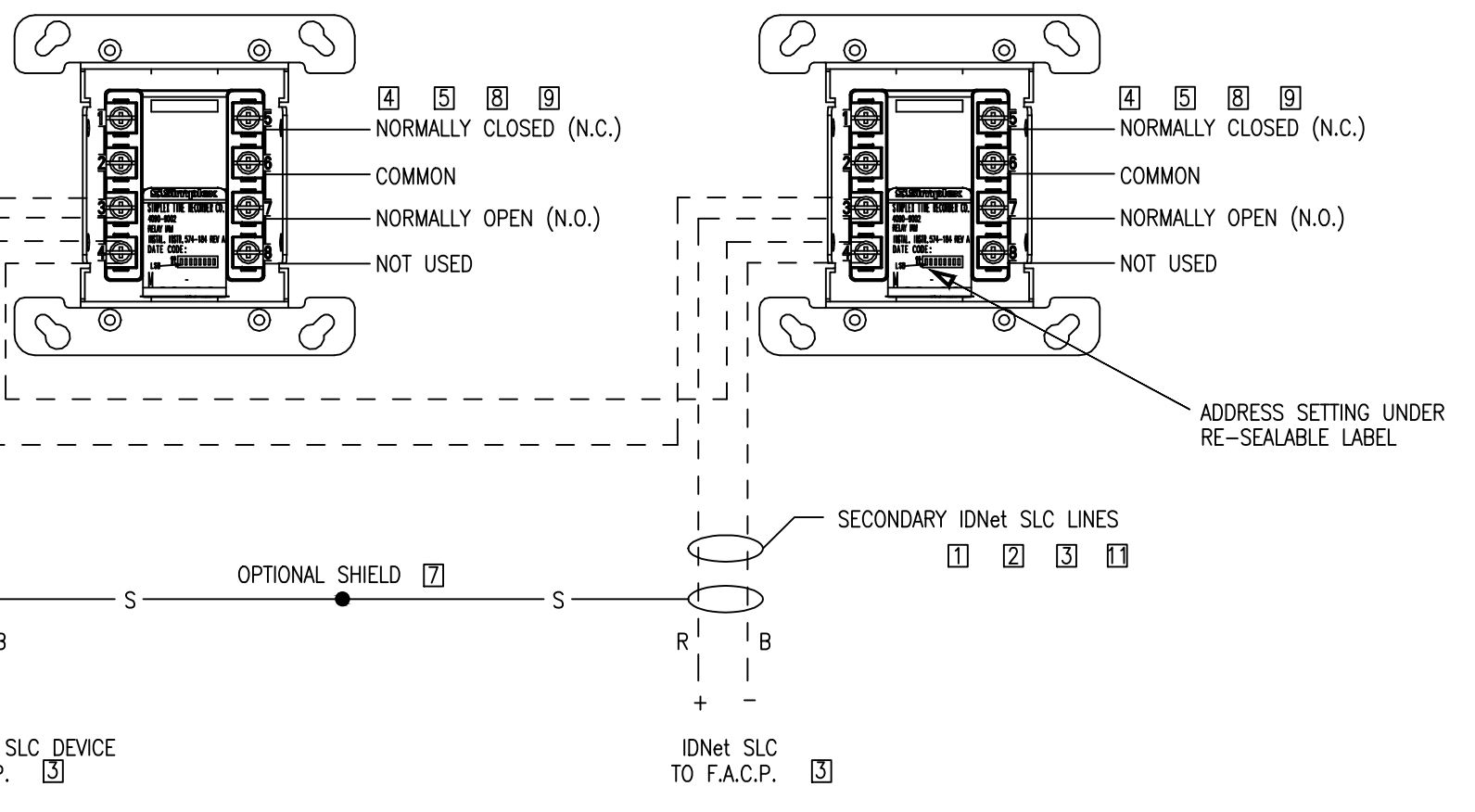
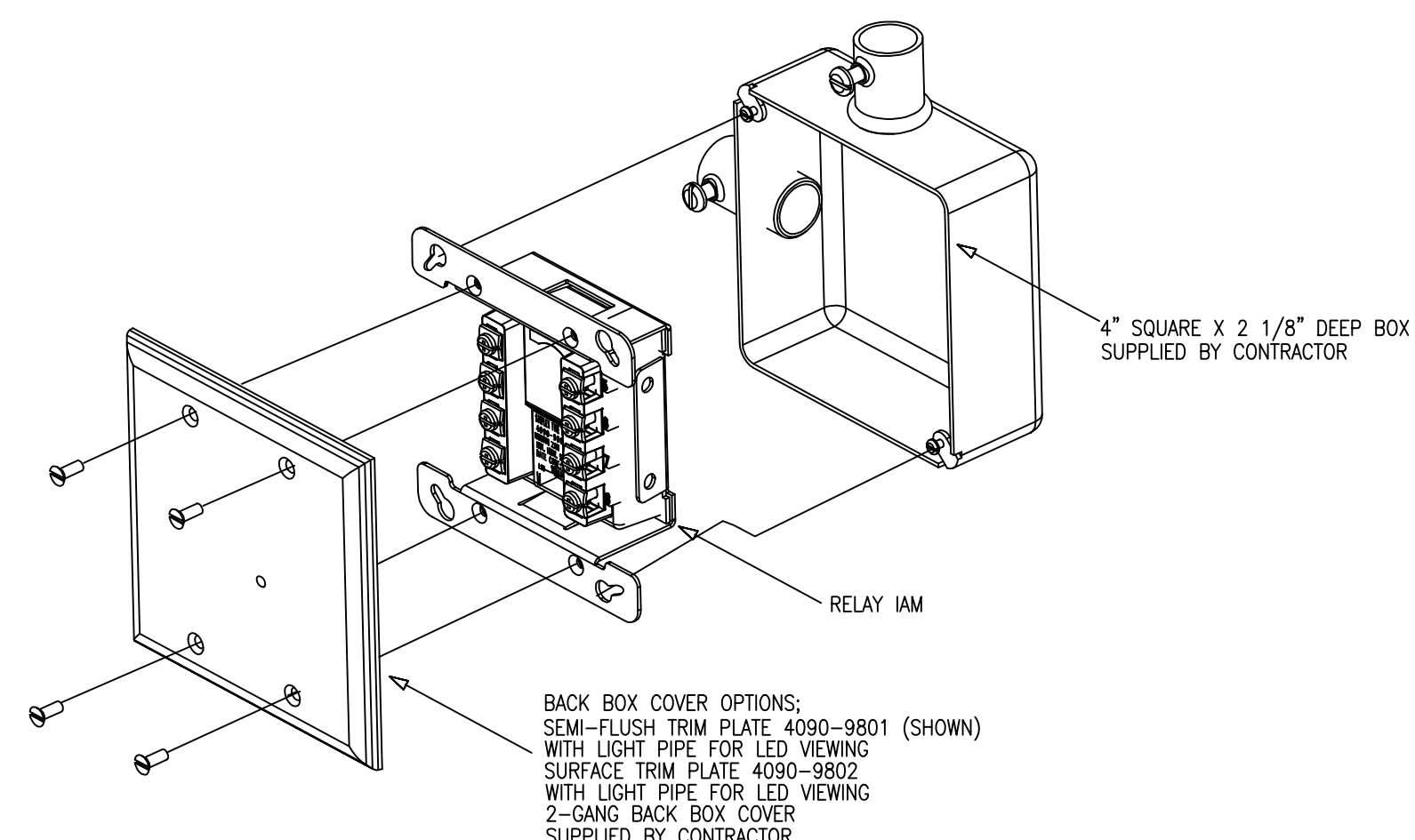
PRODUCT INFORMATION

4090-9002 IDNet SLC, INDIVIDUAL ADDRESSABLE OUTPUT MODULE RELAY (AOM)

- FEATURES:
- UL LISTED
 - A SINGLE ADDRESSABLE POINT BOTH CONTROLS A 2A FORM "C" CONTACT AND TRACKS ITS STATUS
 - COMPATIBLE WITH SIMPLEX MODEL 4010 AND 4100 ADDRESSABLE FIRE ALARM CONTROL PANEL
 - LATCHING RELAY DESIGN ALLOWS DATA AND POWER TO BE BOTH SUPPLIED BY IDNet COMMUNICATIONS
 - COMPACT, SEALED CONSTRUCTION:
 - SCREW TERMINALS FOR WIRING CONNECTIONS
 - REDUCES DUST INFILTRATION
- SPECIFICATIONS:
- RELAY IAM POWER: SUPPLIED BY IDNet COMMUNICATIONS
 - RELAY IAM CONTACTS (FORM "C", SPDT)
 - POWER LIMITED RATING: 2A @ 24VDC, TRANSIENT SUPPRESSED LOADS, 1A @ 24VDC FOR INDUCTIVE LOADS
 - NON POWER LIMITED RATING: 1/2A @ 24VAC, TRANSIENT SUPPRESSED LOADS, 1A @ 24 VDC FOR INDUCTIVE LOADS
 - WIRE CONNECTIONS: SCREW TERMINALS FOR IN/OUT WIRING, #18 TO #14 AWG WIRE
 - COMPATIBLE WITH SIMPLEX 2081-9044 OVER VOLTAGE PROTECTORS
 - DIMENSIONS: 4 1/8" H x 4 1/8" W x 1 3/8" D (105mm x 105mm x 35mm)
 - HOUSING MATERIAL: BLACK THERMOPLASTIC
 - MOUNTING PLATE MATERIAL: SHEET METAL, GALVANIZED
 - TEMPERATURE RANGE: 32° F TO 120° F (0° C TO 49° C) INTENDED FOR INDOOR OPERATION
 - HUMIDITY RANGE UP TO 93% RH AT 100° F (38° C)

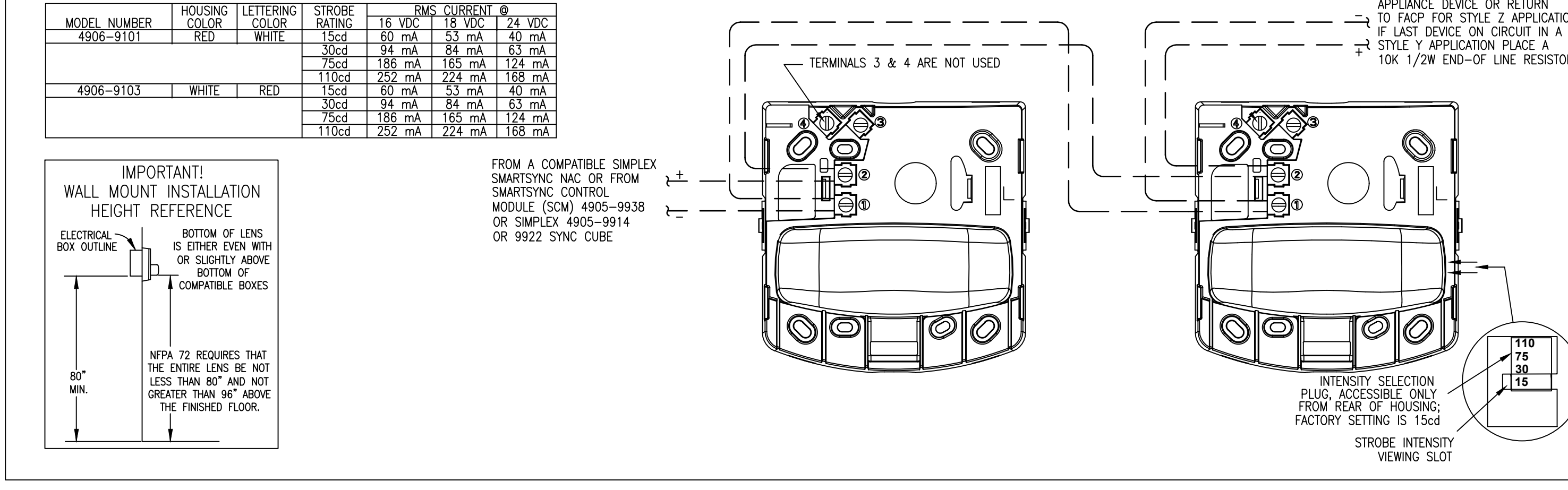
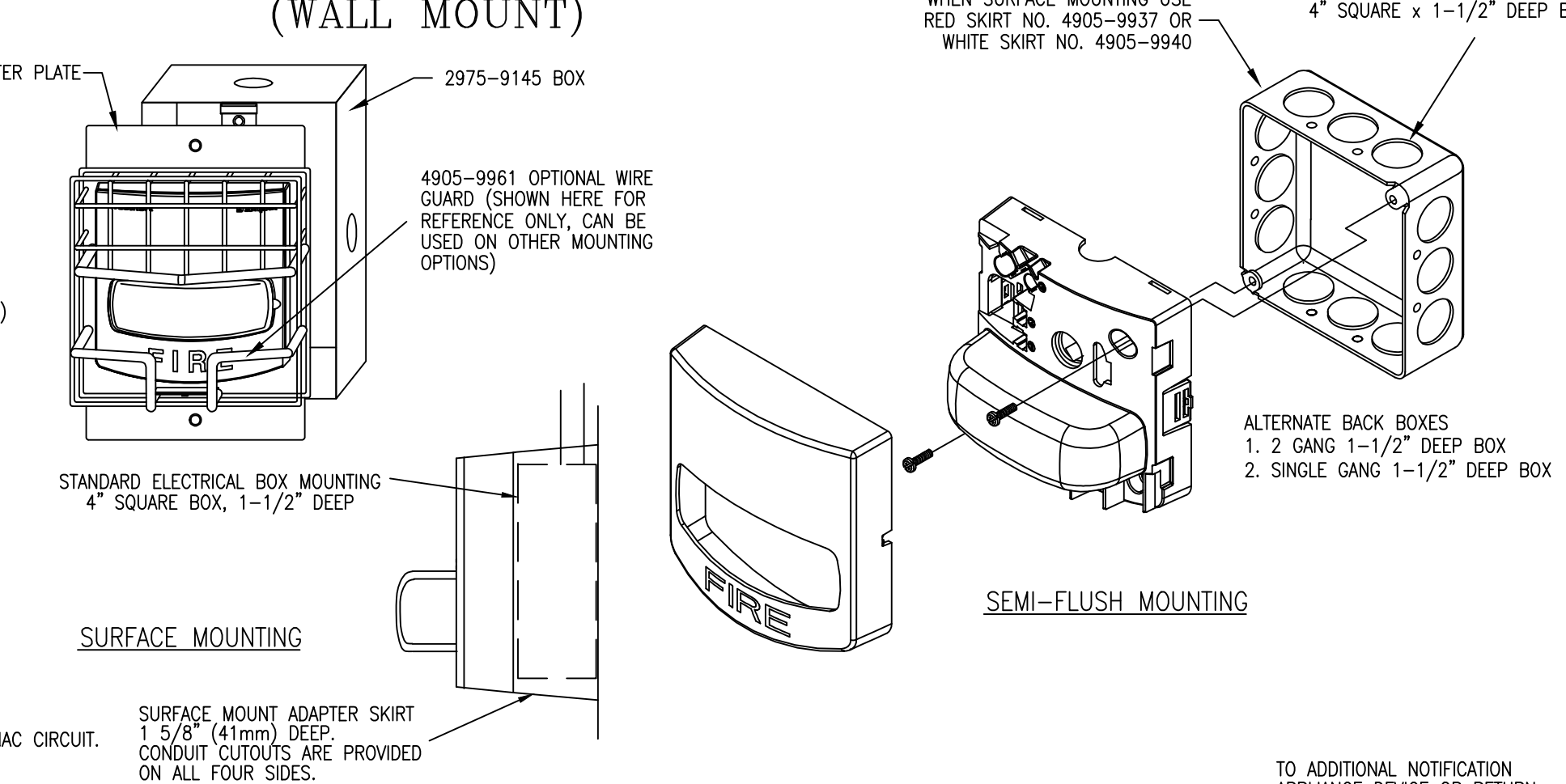
DESCRIPTION:
IDNet SLC RELAY MODULES ALLOW THE SIMPLEX FIRE ALARM CONTROL PANEL TO CONTROL A REMOTELY LOCATED FORM "C" CONTACT USING IDNet ADDRESSABLE COMMUNICATIONS FOR BOTH DATA AND POWER. TYPICAL APPLICATIONS WOULD BE FOR SWITCHING LOCAL POWER FOR CONTROL FUNCTIONS SUCH AS ELEVATOR CAPTURE, OR CONTROL OF HVAC COMPONENTS, PRESSURIZATION FANS, DAMPERS, ETC. RELAY STATUS IS ALSO COMMUNICATED REQUIRING ONLY ONE DEVICE ADDRESS.

- WIRING NOTES:
- IDNet SLC LINES ARE TO BE #18 AWG TWISTED PAIR (CONSULT SC SALES ENGINEERING FOR EXCEPTIONS) SHIELD RECOMMENDED.
 - MAXIMUM ALLOWABLE LINE RUN, FROM THE F.A.C.P. TO THE FARTHEST DEVICE, NOT TO EXCEED 2500 FEET.
 - MAXIMUM QUANTITY OF DEVICES PER CIRCUIT: CONTROL PANEL MODULE DEPENDENT.
 - CONTRACTOR WIRING TO RELAY CONTACTS IS UNSUPERVISED. USE #14 AWG WIRE TO LOCAL CODE.
 - RELAY CONTACTS RATED 2A, 24VDC (1A FOR INDUCTIVE LOAD) RELAY CONTACTS RATED 0.5A 120VAC (NON POWER LIMITED) FOR POWER-LIMITED OPERATION, POWER MUST BE PROVIDED FROM FACP OR POWER-LIMITED POWER SUPPLY LISTED FOR FIRE PROTECTIVE SIGNALING USE.
 - SEE INSTALLATION INSTRUCTIONS 574-184.
 - IF SHIELD IS PRESENT, CONNECT TO THE OUTGOING IDNet SHIELD TO PROVIDE A CONTINUOUS SHIELD OVER THE LENGTH OF THE IDNet CHANNEL. METHOD OF SPLICE DETERMINED BY AHJ.
 - WHEN CONNECTED TO A NON POWER-LIMITED SOURCE, THE WIRING MUST MAINTAIN A MINIMUM 1/4 INCH SEPARATION FROM IDNet WIRING.
 - WHEN USED WITH NON POWER-LIMITED SOURCE, THE "POWER LIMITED WIRING" INDICATION ON THE DEVICE LABEL MUST BE OBLITERATED.
 - WHEN BOTH POWER-LIMITED AND NON POWER-LIMITED SOURCES ARE PRESENT, USE TYPE FPL, FPLR OR FPLP POWER LIMITED CABLE FOR POWER-LIMITED CIRCUITS.
 - MAXIMUM TOTAL WIRE (INCLUDING ALL T-TAPS) ON CIRCUIT, FROM THE F.A.C.P., NOT TO EXCEED 10,000 FEET OR .58uF. (CLASS B ONLY) REFER TO FIELD WIRING DIAGRAM 842-073



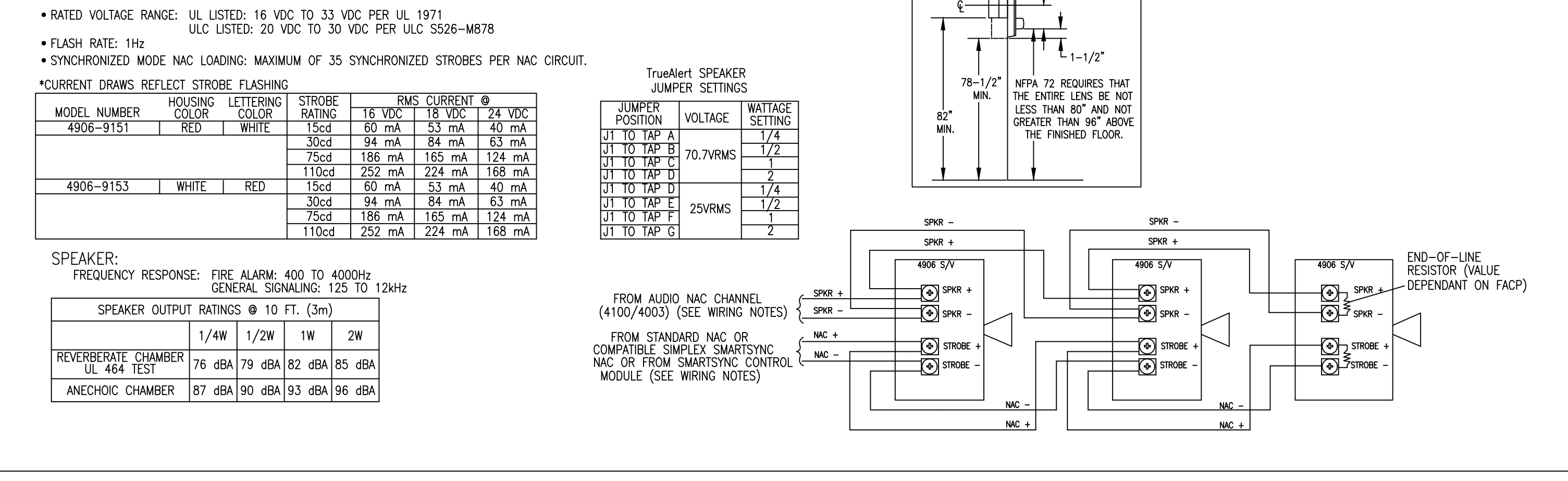
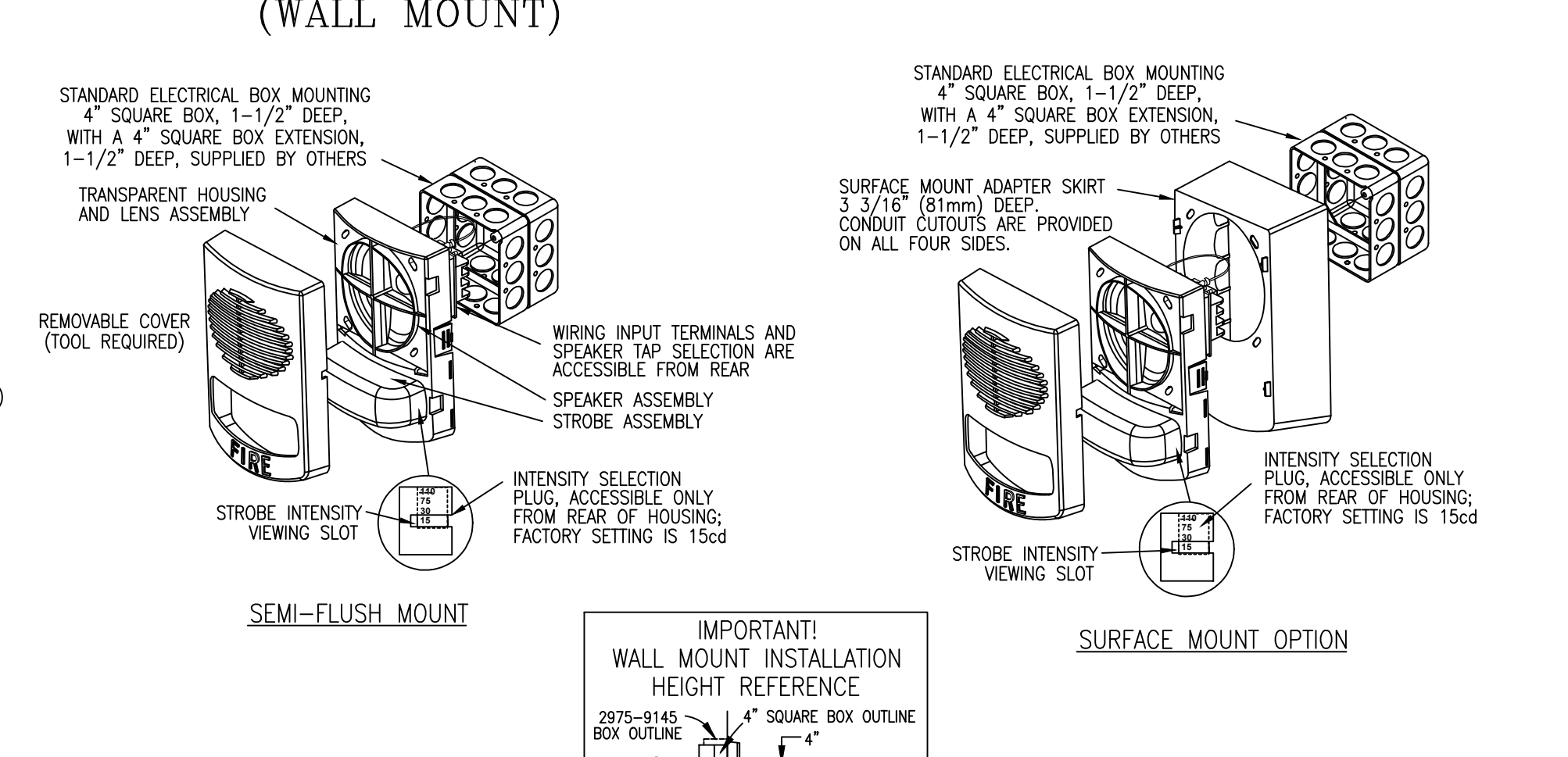
TrueAlert™ NON-ADDRESSABLE MULTI-CANDELA VISIBLE NOTIFICATION APPLIANCE (WALL MOUNT)

- PRODUCT INFORMATION
- FEATURES:
- UL LISTED TO STANDARD 1971
 - ADA COMPATIBLE
 - SYNCHRONIZATION FLASH RATE MODE FOR USE WITH:
 - SEPARATE STROBE SYNCHRONIZATION MODULES THAT ARE AVAILABLE FOR CLASS B OR CLASS A OPERATION
 - SEPARATE SMARTSYNC CONTROL MODULES (SCMs) THAT PROVIDE CLASS B OR CLASS A OUTPUT FROM CONVENTIONAL NAC INPUTS
- SPECIFICATIONS:
- HOUSING DIMENSIONS: 5-1/8" H x 5" W x 2-3/4" D (130mm x 127mm x 70mm)
 - TEMPERATURE RANGE: 32° F TO 122° F (0 TO 50° C)
 - HUMIDITY RANGE: 10% TO 93% NON-CONDENSATING AT 100° F (38° C)
 - TERMINAL BLOCKS FOR 18AWG TO 12AWG; TWO WIRES PER TERMINAL FOR IN/OUT WIRING.
- WIRING:
- NOTIFICATION APPLIANCES ARE RATED PER INDIVIDUAL NAMEPLATE LABEL.
 - MAINTAIN CORRECT POLARITY ON TERMINAL CONNECTIONS. DO NOT LOOP WIRES UNDER TERMINALS.
 - ALL NAC WIRING CONNECTIONS ARE SUPERVISED AND POWER-LIMITED.
 - SEE INSTALLATION INSTRUCTIONS (579-548) FOR ADDITIONAL INFORMATION.
- STROBE:
- RATED VOLTAGE RANGE: UL LISTED: 16 VDC TO 33 VDC PER UL 1971 ULC LISTED: 20 VDC TO 30 VDC PER ULC S526-M878
 - FLASH RATE: 1Hz
 - SYNCHRONIZED MODE NAC LOADING: MAXIMUM OF 35 SYNCHRONIZED STROBES PER NAC CIRCUIT.
 - CURRENT DRAWS REFLECT STROBE FLASHING



TrueAlert™ NON-ADDRESSABLE MULTI-CANDELA SPEAKER/VISIBLE NOTIFICATION APPLIANCE (WALL MOUNT)

- PRODUCT INFORMATION
- FEATURES:
- UL LISTED TO STANDARD 1971 & 1480
 - ADA COMPATIBLE
 - OPTIONS FOR WALL MOUNT SPEAKER VISUALS:
 - SKIRTS FOR SURFACE MOUNT ELECTRICAL BOXES - RED 4905-9946, WHITE 4905-9947
 - 4905-9998 WIRE GUARD
- SYNCHRONIZATION FLASH RATE MODE FOR USE WITH:
- SEPARATE STROBE SYNCHRONIZATION MODULES THAT ARE AVAILABLE FOR CLASS B OR CLASS A OPERATION
- SPECIFICATIONS:
- HOUSING DIMENSIONS: 7-1/4" H x 5" W x 2-5/8" D (184mm x 127mm x 67mm)
 - TEMPERATURE RANGE: 32° F TO 122° F (0 TO 50° C)
 - HUMIDITY RANGE: 10% TO 93% NON-CONDENSATING AT 100° F (38° C)
 - TERMINAL BLOCKS FOR 18AWG TO 12AWG; TWO WIRES PER TERMINAL FOR IN/OUT WIRING.
- WIRING NOTES:
- NOTIFICATION APPLIANCES ARE RATED PER INDIVIDUAL NAMEPLATE LABEL.
 - MAINTAIN CORRECT POLARITY ON TERMINAL CONNECTIONS. DO NOT LOOP WIRES UNDER TERMINALS.
 - ALL NAC WIRING CONNECTIONS ARE SUPERVISED AND POWER-LIMITED.
 - SEE INSTALLATION INSTRUCTIONS (579-548) FOR ADDITIONAL INFORMATION.
- STROBE:
- RATED VOLTAGE RANGE: UL LISTED: 16 VDC TO 33 VDC PER UL 1971 ULC LISTED: 20 VDC TO 30 VDC PER ULC S526-M878
 - FLASH RATE: 1Hz
 - SYNCHRONIZED MODE NAC LOADING: MAXIMUM OF 35 SYNCHRONIZED STROBES PER NAC CIRCUIT.
 - CURRENT DRAWS REFLECT STROBE FLASHING



tyco SimplexGrinnell
Safer. Smarter. Tyco.™

DISTRICT - 147
WESTBROOK, MAINE 04092
PHONE: 207-842-8440
FAX: 207-842-8439

SPARE TIME RECREATION-LASER TAG AMUSEMENT

SPARE TIME RECREATION-LASER TAG AMUSEMENT
867 RIVERSIDE STREET
PORTLAND, MAINE 04103-1070

ISSUE NO.	CHK.	DESCRIPTION	DATE	BY	REVISED PER ADDITION OF MAINTENANCE SHEET
1			8/15/15	SK	

DRAWN BY: MD
CHECKED BY: SK
ISSUE DATE: 8/12/15
JOB #: 147-985922501
PROJECT #: 147-985922501
SIMPLEXGRINNELL © 2015
SYSTEM: FIRE ALARM SYSTEM
SHEET: WIRING TYPICALS
FA-702

FILE PATH: W:\Northern New England Design Team\147 Spare Time Recreation\REV1\REV1\Fire Alarm Drawings\FA-702.dwg
LAST SAVED BY: MDESJATA
LAST PRINTED: 9/15/2015 10:33:55 AM
24 x 36" Arch D Size

TrueAlert™ NON-ADDRESSABLE MULTI-CANDELA SPEAKER/VISIBLE NOTIFICATION APPLIANCE (CEILING MOUNT)

PRODUCT INFORMATION

- FEATURES:**
- UL LISTED TO STANDARD 1971 & 1480
 - ADA COMPATIBLE

SYNCHRONIZATION FLASH RATE MODE FOR USE WITH:

- SYNCHRONIZATION MODULES FOR CLASS B (STYLE Y) OR CLASS A (STYLE Z) OPERATION

SPECIFICATIONS:

- SPEAKER HOUSING DIMENSIONS: 7 1/2" DIA X 1 1/2" D (191MM X 13MM)
- STROBE LENS PROTRUSION DIMENSION: 2 5/8" (67MM) ABOVE SPEAKER HOUSING
- DEPTH INTO BOX 2 3/4" (70MM)
- TEMPERATURE RANGE: 32°F TO 122°F (0 TO 50°C)
- HUMIDITY RANGE: 10% TO 93% NON-CONDENSING AT 100°F (38°C)
- TERMINAL BLOCKS FOR 18AWG TO 12AWG; TWO WIRES PER TERMINAL FOR IN/OUT WIRING.

WIRING:

- NOTIFICATION APPLIANCES ARE RATED PER INDIVIDUAL NAMEPLATE LABEL.
- MAINTAIN CORRECT POLARITY ON TERMINAL CONNECTIONS. DO NOT LOOP WIRES UNDER TERMINALS.
- ALL NAC WIRING CONNECTIONS ARE SUPERVISED AND POWER-LIMITED.
- SEE INSTALLATION INSTRUCTIONS (579-548) FOR ADDITIONAL INFORMATION.

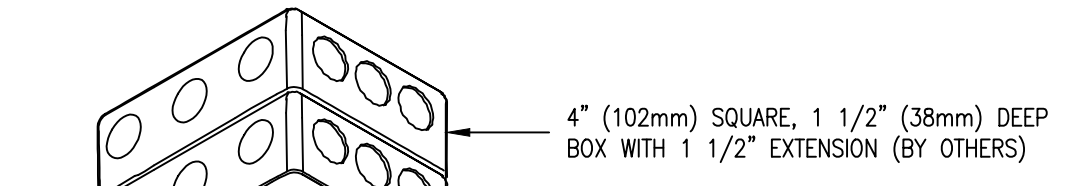
STROBE:

- RATED VOLTAGE RANGE: UL LISTED: 16 VDC TO 33 VDC
ULC LISTED: 20 VDC TO 30 VDC PER ULC S526-M878
- FLASH RATE: 1Hz
- SYNCHRONIZED MODE NAC LOADING: MAXIMUM OF 35 SYNCHRONIZED STROBES PER NAC CIRCUIT.

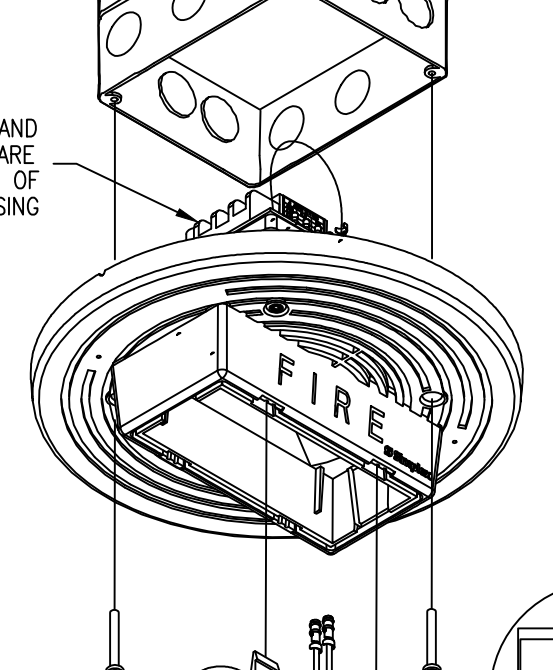
*CURRENT DRAWS REFLECT STROBE FLASHING

MODEL NUMBER	HOUSING COLOR	LETTERING	STROBE RATING	16 VRMS	18 VRMS	24 VRMS
4906-91541	WHITE	RED	15cd	75mA	87mA	50mA
			30cd	149mA	171mA	85mA
			75cd	233mA	267mA	159mA
			110cd	316mA	361mA	211mA

SPEAKER dBA AT 10' (RATED WATTS)		1/4	1/2	1	2
REVERBERATE CHAMBER	UL 464 TEST	76 dBA	79 dBA	82 dBA	85 dBA
ANECHOIC CHAMBER		87 dBA	90 dBA	93 dBA	96 dBA



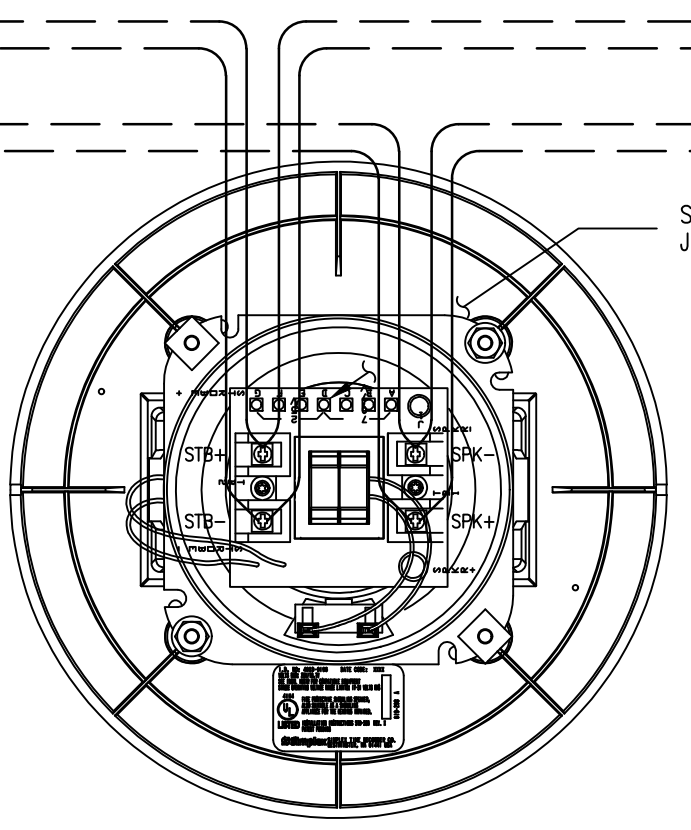
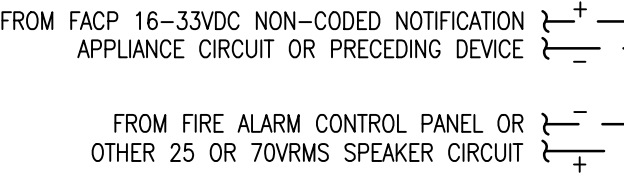
WIRING INPUT TERMINALS AND SPEAKER TAP SELECTION ARE ACCESSIBLE FROM REAR OF SPEAKER HOUSING



INTENSITY SELECTION PLUG, ACCESSIBLE ONLY FROM REAR OF LENS HOUSING; FACTORY SETTING IS 15cd

TO ADDITIONAL NOTIFICATION APPLIANCE DEVICES (STROBE) OR RETURN TO FACP OR SYNC MODULE FOR STYLE Z APPLICATION IF LAST DEVICE ON CIRCUIT IN A STYLE Y APPLICATION PLACE A 10K 1/2W END-OF-LINE RESISTOR

TO ADDITIONAL 25 OR 70VRMS SPEAKERS OR RETURN TO FACP FOR STYLE Z APPLICATION IF LAST DEVICE ON CIRCUIT IN A STYLE Y APPLICATION PLACE A 10K 1/2W END-OF-LINE RESISTOR



SPEAKER TAP JUMPERS

Jumper Position	Voltage	Watt Tap
J1 to Tap A		1/4
J1 to Tap B	70.7 VRMS	1/2
J1 to Tap C		1
J1 to Tap D		2
J1 to Tap E	25 VRMS	1/4
J1 to Tap F		1/2
J1 to Tap G		2

tyco
SimplexGrinnell

Safer. Smarter. Tyco.™

DISTRICT - 147
WESTBROOK, ME 04092
SERVICE: 207-842-6440
PHONE: 207-842-6440
FAX: 207-842-6439

SPARE TIME RECREATION-LASER TAG AMUSEMENT

SPARE TIME RECREATION-LASER TAG AMUSEMENT
867 RIVERSIDE STREET
PORTLAND, MAINE 04103-1070

ISSUE LOG:

NO.	DATE	BY	DESCRIPTION
1	8/12/15	MD	REVISED PER ADDITION OF MAINTENANCE SHEET

DRAWN BY: MD
CHECKED BY: SK
ISSUE DATE: 8/12/15
JOB #: 147-985922501
PROJECT #: 147-985922501
SIMPLEXGRINNELL © 2015
SYSTEM: FIRE ALARM SYSTEM

SHEET: WIRING TYPICALS

FA-703

IMPORTANT NOTICE TO USER: This drawing is a computer-generated drawing. It is not a photograph of the actual hardware. The information contained herein is for informational purposes only and is not intended to be used as a substitute for the actual hardware. The information may not be used or modified in any third party, used or other project or address of the project for which it was prepared, or used for any other project or address of the project for which it was prepared, or used for any other project or address of the project for which it was prepared. This information may not be used or modified in any third party, used or other project or address of the project for which it was prepared, or used for any other project or address of the project for which it was prepared. This information may not be used or modified in any third party, used or other project or address of the project for which it was prepared, or used for any other project or address of the project for which it was prepared.