

DOOR SCHEDULE

DOOR SCHEDULE ABBREVIATIONS

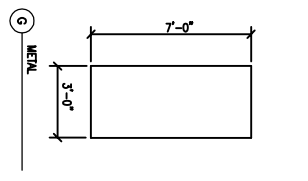
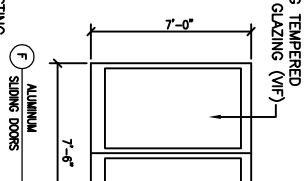
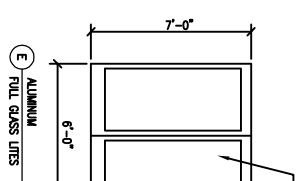
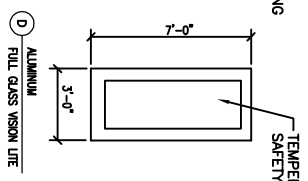
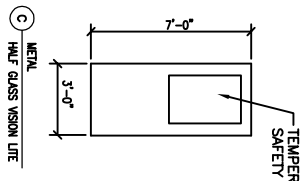
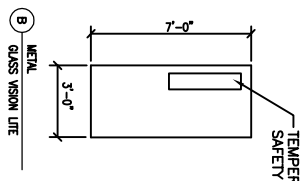
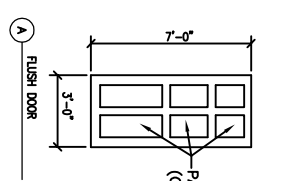
CLO.	CLOSER	HM	HOLLOW METAL	S.C.	SOLID CORE HARDBOARD
DSI	DOOR SLIDERS	INS	INSULATED	S.H.	SPRING HINGE
D.S.	DOOR STOP	K	KICKPLATE (FUSH SIDE)	S.L.	SPRIT JAMB (WOOD)
DS	DOOR STOP	KL	KEY LOCK	TEMP	TEMPERED
EHO	ELECTR. HOLD OPENER	LC	FULL HEIGHT LOOKING CHANNEL	TL	TRAILER LATCH
E3	ELECTR. STRIKE	MIL	METAL	THK	THICKNESS
F.J.P.	FINGER JOINTED FRAMED	NO	NUMBER	WD	WOOD (SOLID)
FR	FIRE RATED	P	DOOR PULL	WE	WEATHERSTRIPPING
HO	HOLD OPEN ARM	PS	PASSAGE SET	WS	WEATHERSTRIPPING
HA	HANDICAP ACCESSIBLE	P.H.	FIRE EXIT PANIC HARDWARE (NOTE 3)	V	VEENER
HC	HOLLOW CORE HARDBOARD	P.S.	PUSH PLATE	VF	VERIFY IN FIELD
HW	HARDWARE	PS	PRIVACY SET		
S	STEEL				

MARK	TYPE	SIZE	THK.	F.R.	HDWE SET	MAT.	GLASS		REMARKS	TYPE	MAT.	F.R.	DETAILS		THRESHOLD		REMARKS
							SIZE	TYPE					HEAD	JAMB	MAT.	SILL	
E1	F	PR 3'-0" x 7'-0"	-	-	BREAK AWAY EGRESS DOORS	ALUM	-	-	SLIDING FIRE EXIT BREAK AWAY EGRESS DOORS - VERIFY IN FIELD	ALUM	-	-	-	-	1/2" MAX	G.C. FIELD VERIFY DOOR SIZE, ACCESSIBILITY, FIRE EXIT PANIC HARDWARE (NOTE 3) AND SAFETY GLASS REQUIREMENTS	
E2	E	PR 3'-0" x 7'-0"	-	-	FIRE EXIT PANIC HARDWARE	ALUM	-	-	VERIFY FIRE EXIT PANIC HARDWARE IN FIELD - NOTE 3	ALUM	-	-	-	-	1/2" MAX	G.C. FIELD VERIFY DOOR SIZE, ACCESSIBILITY, FIRE EXIT PANIC HARDWARE (NOTE 3) AND SAFETY GLASS REQUIREMENTS	
E3	G	3'-0" x 7'-0"	-	-	FIRE EXIT PANIC HARDWARE	STEEL	-	-	VERIFY FIRE EXIT PANIC HARDWARE IN FIELD - NOTE 3	METAL	-	-	-	-	1/2" MAX	G.C. FIELD VERIFY DOOR SIZE, ACCESSIBILITY, FIRE EXIT PANIC HARDWARE (NOTE 3) AND THRESHOLD DETAIL	

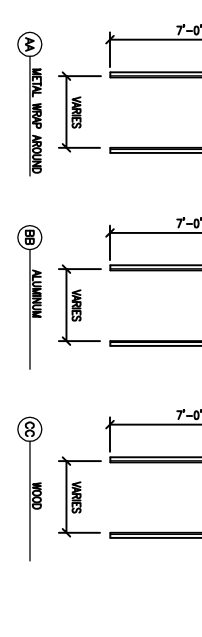
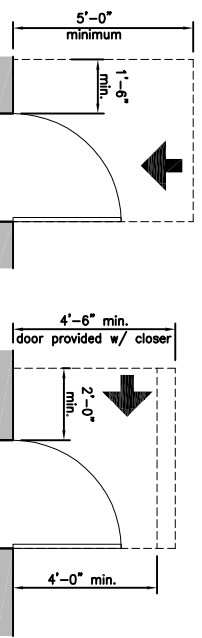
INTERIOR - KITCHEN & DINING																		
1	A	3'-0" x 7'-0"	1 3/4"	-	LEVER	STEEL	-	-	HA, CLO, PHS, DSI, DST (G.C. VERIFY & COORDINATE DOOR UNDERCUT FOR FLOOR MATERIAL)	AA	METAL	-	-	-	-	-	G.C. VERIFY & COORDINATE DOOR UNDERCUT FOR FLOOR MATERIAL	NOTES 1 AND 2
2	D	3'-0" x 7'-0"	-	-	PUSH / PULL	ALUM	-	-	HA, P, PP, CLO, DSI, DST, NON-LATCHING (G.C. VERIFY & COORDINATE DOOR UNDERCUT FOR FLOOR MATERIAL)	BB	ALUM	-	-	-	-	-	G.C. VERIFY & COORDINATE DOOR UNDERCUT FOR FLOOR MATERIAL	NOTES 1 AND 2
3	D	3'-0" x 7'-0"	-	-	PUSH / PULL	ALUM	-	-	HA, P, PP, CLO, DSI, DST, NON-LATCHING (G.C. VERIFY & COORDINATE DOOR UNDERCUT FOR FLOOR MATERIAL)	BB	ALUM	-	-	-	-	-	G.C. VERIFY & COORDINATE DOOR UNDERCUT FOR FLOOR MATERIAL	NOTES 1 AND 3
4	D	3'-0" x 7'-0"	-	-	PUSH / PULL	ALUM	-	-	HA, P, PP, CLO, DSI, DST, NON-LATCHING (G.C. VERIFY & COORDINATE DOOR UNDERCUT FOR FLOOR MATERIAL)	BB	ALUM	-	-	-	-	-	G.C. VERIFY & COORDINATE DOOR UNDERCUT FOR FLOOR MATERIAL	NOTES 1 AND 2
5	D	3'-0" x 7'-0"	-	-	PUSH / PULL	ALUM	-	-	HA, P, PP, CLO, DSI, DST, NON-LATCHING (G.C. VERIFY & COORDINATE DOOR UNDERCUT FOR FLOOR MATERIAL)	BB	ALUM	-	-	-	-	-	G.C. VERIFY & COORDINATE DOOR UNDERCUT FOR FLOOR MATERIAL	NOTES 1 AND 3
6	B	3'-0" x 7'-0"	-	-	PUSH / PULL	STEEL	-	-	HA, K, P, PP, CLO, DSI, DST, NON-LATCHING (G.C. VERIFY & COORDINATE DOOR UNDERCUT FOR FLOOR MATERIAL)	AA	METAL	-	-	-	-	-	G.C. VERIFY & COORDINATE DOOR UNDERCUT FOR FLOOR MATERIAL	NOTES 1 AND 2
7	B	3'-0" x 7'-0"	-	-	PUSH / PULL	STEEL	-	-	HA, K, P, PP, CLO, DSI, DST, NON-LATCHING (G.C. VERIFY & COORDINATE DOOR UNDERCUT FOR FLOOR MATERIAL)	AA	METAL	-	-	-	-	-	G.C. VERIFY & COORDINATE DOOR UNDERCUT FOR FLOOR MATERIAL	NOTES 1 AND 2
8	A	3'-0" x 7'-0"	-	-	FIRE EXIT PANIC HARDWARE	STEEL	-	-	HA, K, PH, CLO, DSI, DST (G.C. VERIFY & COORDINATE DOOR UNDERCUT FOR FLOOR MATERIAL)	AA	METAL	-	-	-	-	-	G.C. VERIFY & COORDINATE DOOR UNDERCUT FOR FLOOR MATERIAL	NOTES 1 AND 2

NOTES

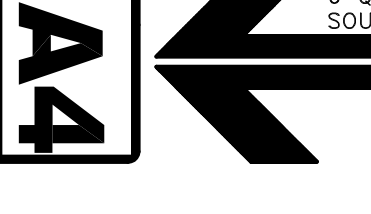
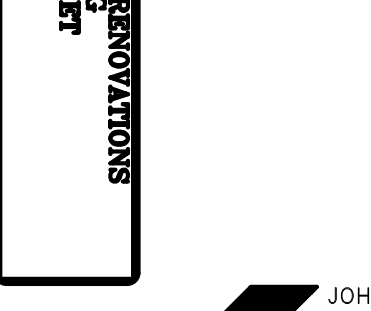
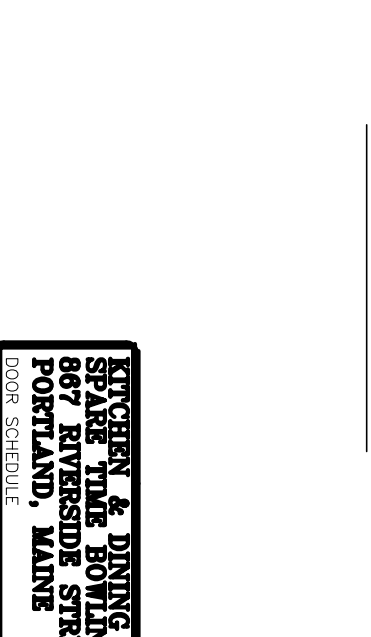
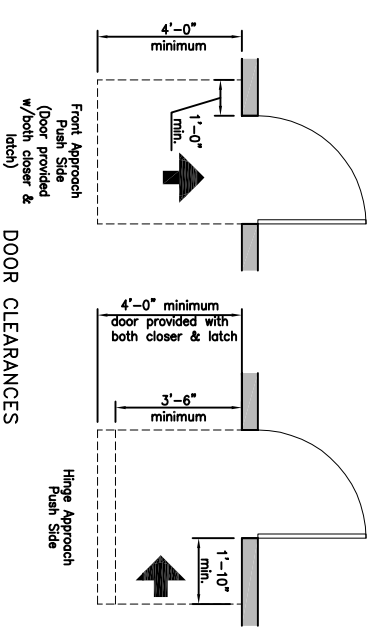
- SPECIFIC SELECTION OF DOOR TYPES, THICKNESS, VENEER, HINGES, LEVER HANDLES, CLOSERS, PANIC BARS, GLASS LITES, TRIM AND OTHER RELATED DOOR HARDWARE BY OWNER/(G.C., TYP)
- ALL DOORS SHALL BE EQUIPPED WITH LEVER TYPE HANDLES (LON) AND SHALL BE ADA COMPLIANT. OPERABLE PARTS SHALL BE 34" MIN. TO 48" MAX. ABOVE FINISHED FLOOR AND OPERATE WITH ONE HAND AND SHALL NOT REQUIRE TIGHT GRASPING, PINCHING, OR TWISTING OF THE WRIST. THE FORCE REQUIRED TO ACTIVATE OPERABLE PARTS SHALL BE 5 POUNDS (22.2N) MAXIMUM.
 - DOOR CLOSERS SHALL BE ADJUSTED SO THAT FROM AN OPEN POSITION AND CLOSED, THERE IS A MINIMUM OF 12 DEGREES FROM THE LATCH IS 5 SECONDS; MINIMUM
- FIRE EXIT PANIC HARDWARE SHALL CONSIST OF LISTED FIRE LABEL WITH LATCHING MECHANISM ON LABELED FIRE RATED DOORS. REQUIRED FIRE EXIT HARDWARE SHALL NOT BE EQUIPPED WITH ANY LOCKING DEVICE, SET SCREW, OR OTHER ARRANGEMENT THAT PREVENTS THE RELEASE OF THE LATCH WHEN PRESSURE IS APPLIED TO THE RELEASING DEVICE.
- G.C. SHALL VERIFY EXISTING EGRESS DOORS AND FRAMES AND VERIFY SIZES, THRESHOLD HEIGHT, ACCEPTABLE WORKING ORDER AND HARDWARE AS INDICATED IN THIS SCHEDULE (NOTIFY ARCHITECT/ENGINEER OF ANY DEFICIENCIES, UPGRADES NEEDED)
- REFER TO CLEARANCES AT DOORS THIS SHEET (TYPICAL) NOTIFY ARCHITECT BEFORE INSTALLATION FOR EXISTING CONDITIONS IF UNABLE TO PROVIDE CLEARANCES INDICATED.



DOOR TYPES

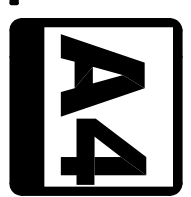


FRAME TYPES



DOOR CLEARANCES

KITCHEN & DINING RENOVATIONS
SPARE TIME BOWLING
867 RIVERSIDE STREET
PORTLAND, MAINE
 DOOR SCHEDULE



JOHN H. LEASURE ARCHITECT, INC.
 6 Q STREET
 SOUTH PORTLAND, MAINE 04106

REV.	DATE	STATUS
0	4-6-16	ISSUED FOR PERMITS

