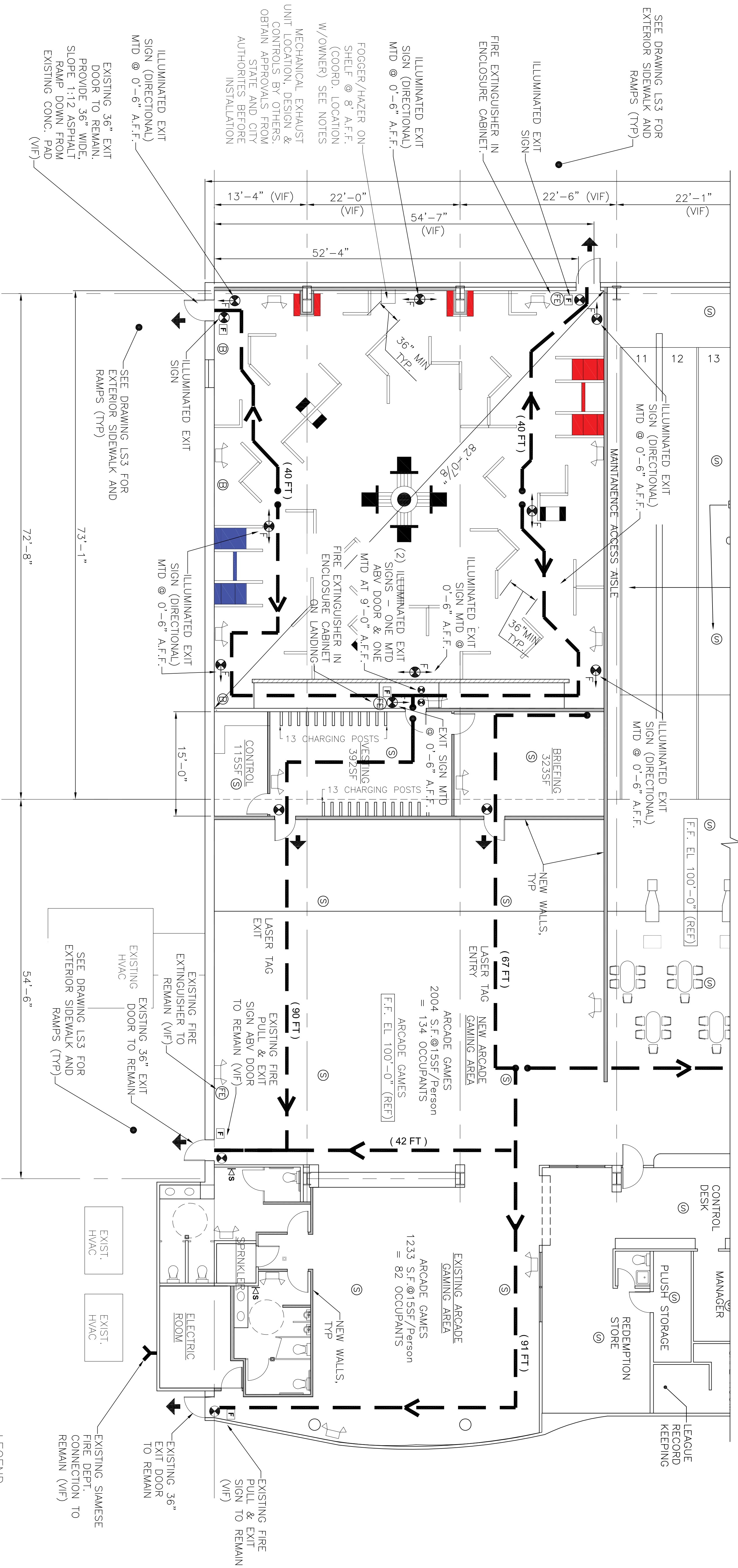


FOR CONTINUATION SEE DRAWING LS1



**LEGEND**

- (FT) COMMON PATH OF TRAVEL (IN FEET)
- (FE) FIRE EXTINGUISHER
- (E) EXIT LIGHT ILLUMINATED (UNSWITCHED)
- (F) FLOOR PROXIMITY ILLUMINATED EGRESS MARKING (UNSWITCHED) MOUNT @ 8" A.F.F. TO BOTTOM OF SIGN
- (S) FIRE ALARM PULL STATION
- (S) FIRE ALARM VISUAL STROBE MOUNT @ 8'-3" A.F.F. 15 CANDELA
- (S) SMOKE DETECTOR SYSTEM CONNECTED
- (B) BEAM SMOKE DETECTOR SYSTEM CONNECTED
- (H) RATE OF RISE HEAT DETECTOR SYSTEM CONNECTED
- (F) FIRE ALARM AUDIOVISUAL MOUNT @ 8" A.F.F.
- (F) EMERGENCY BATTERY UNIT (2 HEADS) 8V DC-10.5 WATTS FOR 90 MINUTES 15 CANDELA
- (S) EMERGENCY BATTERY UNIT (1 HEAD) 90 MINUTE ILLUMINATION

**ENLARGED FLOOR PLAN - LIFE SAFETY**  
1/8" = 1'-0"

**BASIC OPERATION SEQUENCE OF FIRE SUPPRESSION/ALARM SYSTEM:**

ACTUATION OF AUTOMATIC SPRINKLER SYSTEM, ANY OTHER SUPPRESSION SYSTEM OR SMOKE DETECTOR SYSTEM HAVING AN APPROVED VERIFICATION OR CROSS-ZONING OPERATION CAPABILITY SHALL SOUND ALARMS AT A CONSTANT ATTENDED LOCATION ON THE PREMISES. INCREASE ILLUMINATION IN THE MEANS OF EGRESS AND TERMINATE ANY CONFLICTING OR CONFUSING SOUNDS OR VISUALS. IT SHALL ALSO ACTIVATE A THEATRICAL FOG EXHAUST MECHANICAL UNIT IN THE LASER TAG ARENA. THIS FOG EVACUATION EXHAUST UNIT SHALL BE EQUIPPED WITH AN OVERRIDE SWITCH AT THE FIRE ALARM CONTROL PANEL. THE VOICE ANNUNCIATION MESSAGE SHALL ALSO BE INITIATED AND ADDRESS ALL OCCUPANTS IN THE ENTIRE FACILITY. (SEE NOTE 13 ON DRAWING LS1)

ALL FINAL FIRE ALARM CONTROLS, NOTIFICATIONS OF OCCUPANTS, AND OPERATION OF EQUIPMENT IN FACILITY SHALL BE APPROVED BY CITY FIRE DEPARTMENT, STATE FIRE MARSHAL AND CITY BUILDING OFFICIAL AUTHORITIES BEFORE ANY INSTALLATION.

**LASER TAG ARENA**  
Partition walls illustrated are 48" long sections by 48" to 84" High constructed of plywood, painted w/ Class A fire rated paint additive. (See note 3/A1). Owner provide actual dimension and location plan.

1. The Center Prop is between 12 feet & 16 feet High depending on the Motif with the bases about 10 feet High.

2. All aisles in Laser Tag Arena shall be 36" clear minimum between all partitions and/or props, typical.

MECHANICAL, EXHAUST UNIT LOCATION, DESIGN & CONTROLS BY OTHERS. OBTAIN APPROVALS FROM STATE AND CITY AUTHORITIES BEFORE INSTALLATION

EXISTING 36" EXIT DOOR TO REMAIN. PROVIDE 36" WIDE, SLOPE 1:12 ASPHALT RAMP DOWN FROM EXISTING CONC. (VIF)

ILLUMINATED EXIT SIGN (DIRECTIONAL) MTD @ 0'-6" A.F.F.

ILLUMINATED EXIT SIGN (DIRECTIONAL) MTD @ 0'-6" A.F.F.

ILLUMINATED EXIT SIGN (DIRECTIONAL) MTD @ 0'-6" A.F.F.

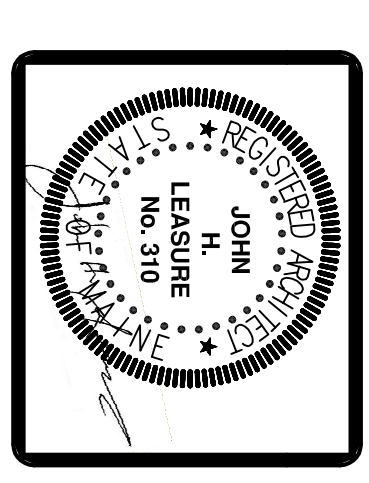
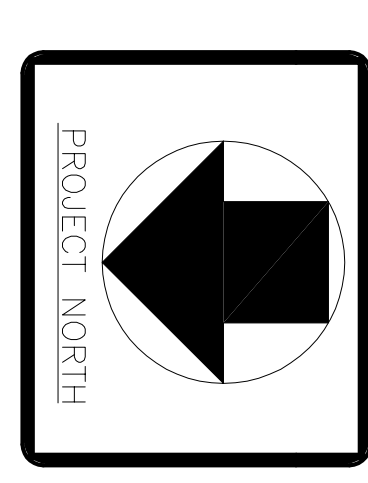
ILLUMINATED EXIT SIGN (DIRECTIONAL) MTD @ 0'-6" A.F.F.

SEE DRAWING LS3 FOR EXTERIOR SIDEWALK AND RAMPS (TYP)

NOTES:  
1. SEE NOTES ON DRAWING LS1

**PROPOSED LASER TAG AMUSEMENT**  
**SPARE TIME BOWLING**  
**867 RIVERSIDE STREET**  
**PORTLAND, MAINE**  
LIFE SAFETY PLAN

REV.	DATE	STATUS
0	2-26-15	ISSUED FOR PERMITS
1	3-10-15	GENERAL REVISIONS
2	4-10-15	GENERAL REVISIONS



JOHN H. LEASURE ARCHITECT, INC.  
6 Q STREET  
SOUTH PORTLAND, MAINE 04106

