

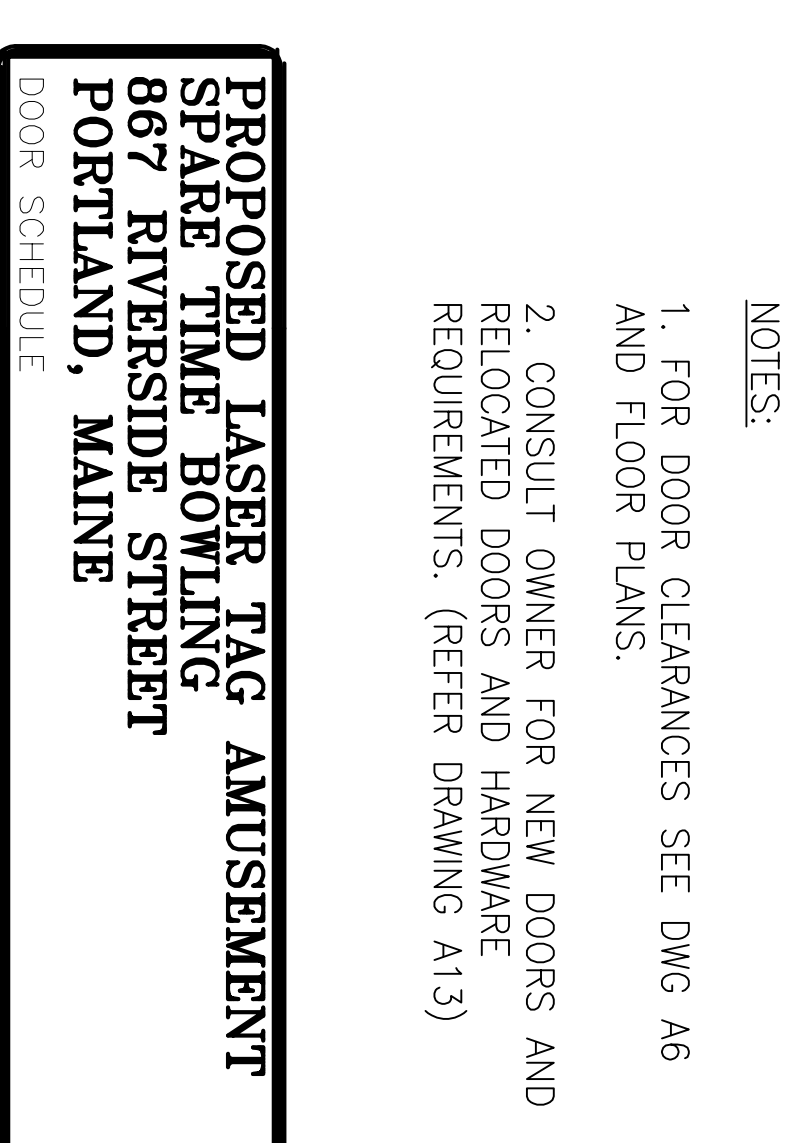
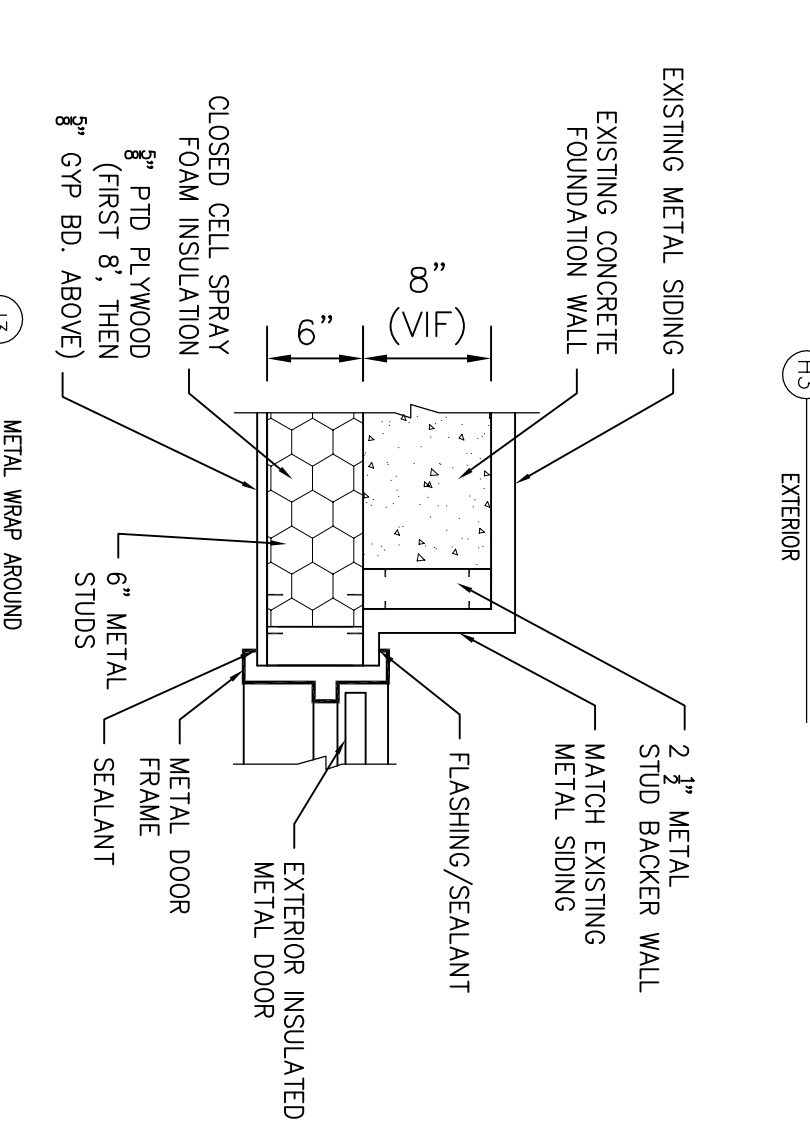
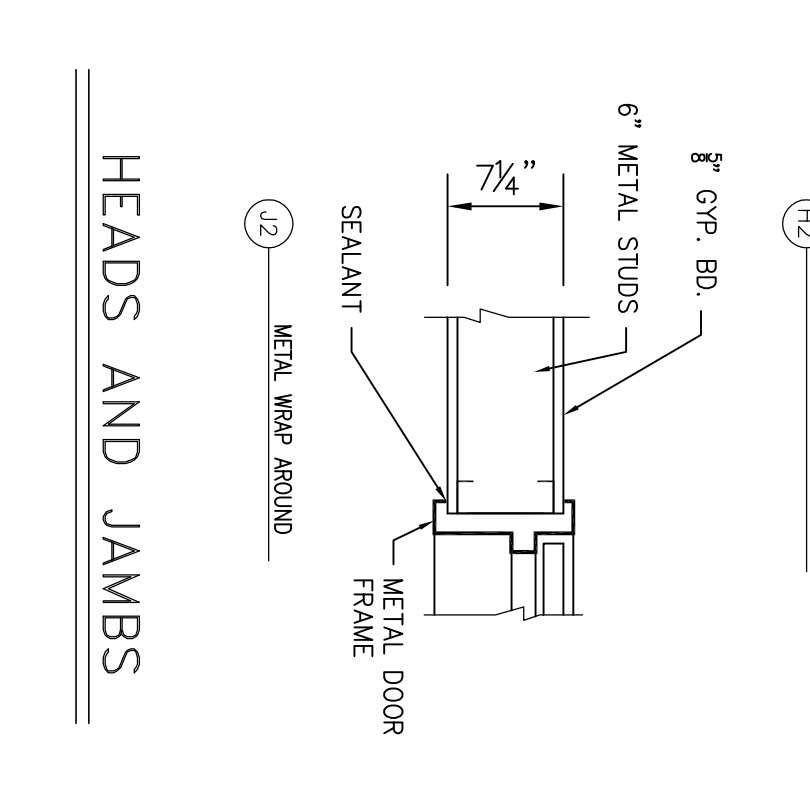
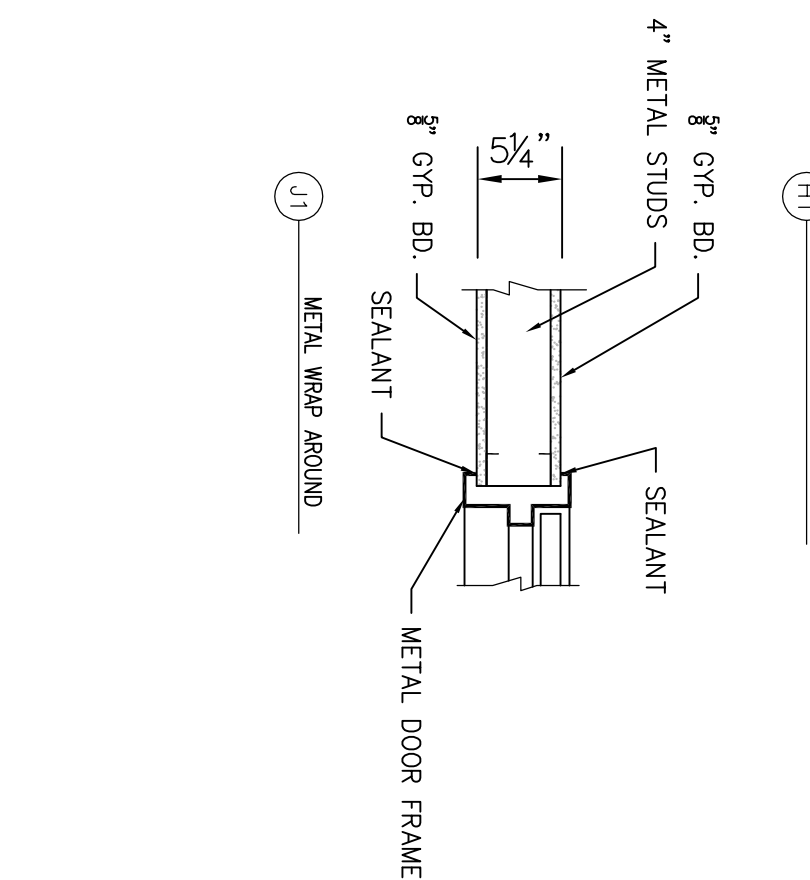
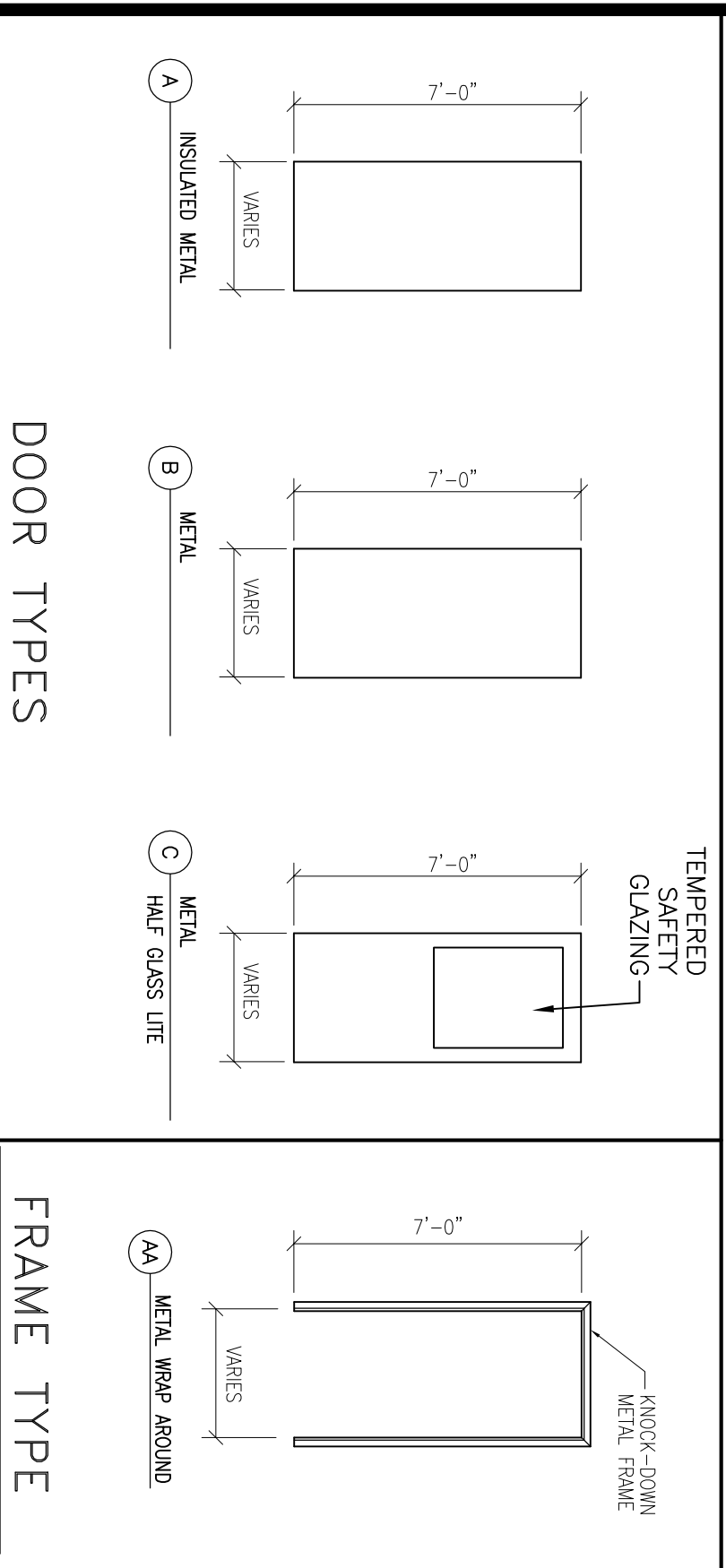
DOOR SCHEDULE

DOOR SCHEDULE ABBREVIATIONS	
C.L.O.	CLOSER
D.S.	DOOR SILENCERS
D.S.W.	DOOR SWEEP
DST	DOOR STOP
EHO	ELECTRO. HOLD OPENER
E3	ELECTRIC STRIKE
F.J.P.	FINGER JOINTED PRWED
FR	FIRE RATED
FR	HOLD OPEN ARM
HA	HANDICAP ACCESSIBLE
HA	HOLLOW CORE HARDBOARD
HC	HOLLOW CORE HARDBOARD
HW	HARDWARE
HM	HOLLOW METAL
INS	INSULATED
K	KICKPLATE (PUSH SIDE)
KL	KEY LOCK
LC	FULL HEIGHT LOCKING CHANNEL
M.L.	METAL
NO	NUMBER
P	DOOR PULL
P	PACKAGE SET
P.H.	FIRE EXIT PANIC HARDWARE (NOTE 3)
P.P.	PUSH PRODUCE
PNS	PRIVACY SET
S	STEEL
S.C.	SOLID CORE HARDBOARD
S.H.	SPRING HINGE
S.I.	SPLIT JAMB (WOOD)
TEMP	TEMPERED
TL	THUMB LATCH
THK	THICKNESS
UC	UNDERCUT
WD	WOOD (SOLID)
WG	WIRE GLASS
WS	WEATHERSTRIPPING
VF	VENER
VF	VERIFY IN FIELD

MARK	TYPE	SIZE	THK.	F.R.	HDWE SET	MAT.	GLASS		REMARKS	TYPE	MAT.	F.R.	DETAILS		THRESHOLD		REMARKS
							SIZE	TYPE					HEAD	JAMB	MAT.	SILL	
E1	EXISTING	FR 3'-9" x 7'-0"	-	-	BREK AWAY EGRESS DOORS	ALUM	-	-	FIRE EXIT BREK AWAY EGRESS DOORS - VERIFY IN FIELD	ALUM	-	-	-	-	ALUMINUM	1/2" MAX	G.C. FIELD VERIFY DOOR SIZE, ACCESSIBILITY, FIRE EXIT PANIC HARDWARE (NOTE 3) AND SAFETY GLASS REQUIREMENTS
E2	EXISTING	FR 3'-9" x 7'-0"	-	-	BREK AWAY EGRESS DOORS	ALUM	-	-	FIRE EXIT BREK AWAY EGRESS DOORS - VERIFY IN FIELD	ALUMINUM	-	-	-	-	ALUMINUM	1/2" MAX	G.C. FIELD VERIFY DOOR SIZE, ACCESSIBILITY, FIRE EXIT PANIC HARDWARE (NOTE 3) AND SAFETY GLASS REQUIREMENTS
E3	EXISTING	FR 3'-0" x 7'-0"	-	-	FIRE EXIT PANIC HDWRE	ALUM	-	-	VERIFY FIRE EXIT PANIC HARDWARE IN FIELD - NOTE 3	ALUM	-	-	-	-	ALUMINUM	1/2" MAX	G.C. FIELD VERIFY DOOR SIZE, ACCESSIBILITY, FIRE EXIT PANIC HARDWARE (NOTE 3) AND SAFETY GLASS REQUIREMENTS
E4	EXISTING	FR 3'-0" x 7'-0"	-	-	FIRE EXIT PANIC HDWRE	ALUM	-	-	VERIFY FIRE EXIT PANIC HARDWARE IN FIELD - NOTE 3	ALUMINUM	-	-	-	-	ALUMINUM	1/2" MAX	G.C. FIELD VERIFY DOOR SIZE, ACCESSIBILITY, FIRE EXIT PANIC HARDWARE (NOTE 3) AND SAFETY GLASS REQUIREMENTS
E5	EXISTING	FR 3'-0" x 7'-0"	-	-	FIRE EXIT PANIC HDWRE	ALUM	-	-	VERIFY FIRE EXIT PANIC HARDWARE IN FIELD - NOTE 3	ALUMINUM	-	-	-	-	ALUM	1/2" MAX	G.C. FIELD VERIFY DOOR SIZE, ACCESSIBILITY, FIRE EXIT PANIC HARDWARE (NOTE 3) AND SAFETY GLASS REQUIREMENTS
E6	EXISTING	FR 3'-0" x 7'-0"	-	-	FIRE EXIT PANIC HDWRE	STEEL	-	-	VERIFY FIRE EXIT PANIC HARDWARE IN FIELD - NOTE 3	METAL	-	-	-	-	ALUMINUM	1/2" MAX	G.C. FIELD VERIFY DOOR SIZE, ACCESSIBILITY, FIRE EXIT PANIC HARDWARE (NOTE 3) AND SAFETY GLASS REQUIREMENTS
E7	EXISTING	3'-0" x 7'-0"	-	-	FIRE EXIT PANIC HDWRE	STEEL	-	-	VERIFY FIRE EXIT PANIC HARDWARE IN FIELD - NOTE 3	METAL	-	-	-	-	ALUMINUM	1/2" MAX	G.C. FIELD VERIFY DOOR SIZE, ACCESSIBILITY, FIRE EXIT PANIC HARDWARE (NOTE 3) AND SAFETY GLASS REQUIREMENTS
E8	EXISTING	3'-0" x 7'-0"	-	-	FIRE EXIT PANIC HDWRE	STEEL	-	-	VERIFY FIRE EXIT PANIC HARDWARE IN FIELD - NOTE 3	METAL	-	-	-	-	ALUM	1/2" MAX	G.C. FIELD VERIFY DOOR SIZE, ACCESSIBILITY, FIRE EXIT PANIC HARDWARE (NOTE 3) AND SAFETY GLASS REQUIREMENTS
E9	EXISTING	3'-0" x 7'-0"	-	-	FIRE EXIT PANIC HDWRE	STEEL	-	-	VERIFY FIRE EXIT PANIC HARDWARE IN FIELD - NOTE 3	METAL	-	-	-	-	ALUM	1/2" MAX	G.C. FIELD VERIFY DOOR SIZE, ACCESSIBILITY, FIRE EXIT PANIC HARDWARE (NOTE 3) AND SAFETY GLASS REQUIREMENTS
E10	EXISTING	FR 3'-0" x 7'-0"	-	-	-	ALUM	-	-	INTERIOR DOORS ACCESS TO BAR AND LOUNGE AREA	-	-	-	-	-	-	-	-
1	B	3'-0" x 7'-0"	1 3/4"	-	LEVER	STEEL	-	-	HA, CLO, DSI, DST (G.C. VERIFY & COORDINATE DOOR UNDERCUT FOR FLOOR MATERIAL)	AA	-	-	H2	J2	-	-	G.C. VERIFY & COORDINATE DOOR UNDERCUT FOR FLOOR MATERIAL
2	B	3'-0" x 7'-0"	1 3/4"	-	LEVER	STEEL	-	-	HA, CLO, PWS, DSI, DST (G.C. VERIFY & COORDINATE DOOR UNDERCUT FOR FLOOR MATERIAL)	AA	-	-	H2	J2	-	-	G.C. VERIFY & COORDINATE DOOR UNDERCUT FOR FLOOR MATERIAL
3	B	3'-0" x 7'-0"	1 3/4"	-	FIRE EXIT PANIC HDWRE	STEEL	-	-	HA, PH, CLO, DSI, DST (G.C. VERIFY & COORDINATE DOOR UNDERCUT FOR FLOOR MATERIAL)	AA	-	-	H2	J2	-	-	G.C. VERIFY & COORDINATE DOOR UNDERCUT FOR FLOOR MATERIAL
4	B	3'-0" x 7'-0"	1 3/4"	-	LEVER	STEEL	-	-	HA, PWS, DSI, DST (G.C. VERIFY & COORDINATE DOOR UNDERCUT FOR FLOOR MATERIAL)	AA	-	-	H1	J1	-	-	G.C. VERIFY & COORDINATE DOOR UNDERCUT FOR FLOOR MATERIAL
5	B	3'-0" x 7'-0"	1 3/4"	-	FIRE EXIT PANIC HDWRE	STEEL	-	-	HA, PH, CLO, DSI, DST (G.C. VERIFY & COORDINATE DOOR UNDERCUT FOR FLOOR MATERIAL)	AA	-	-	H2	J2	-	-	G.C. VERIFY & COORDINATE DOOR UNDERCUT FOR FLOOR MATERIAL
6	B	3'-0" x 7'-0"	1 3/4"	-	LEVER	STEEL	-	-	HA, PWS, DSI, DST (G.C. VERIFY & COORDINATE DOOR UNDERCUT FOR FLOOR MATERIAL)	AA	-	-	H1	J1	-	-	G.C. VERIFY & COORDINATE DOOR UNDERCUT FOR FLOOR MATERIAL
7		NOT USED															
8		NOT USED															
9	B	3'-0" x 7'-0"	1 3/4"	-	LEVER	STEEL	-	-	HA, CLO, DSI, DST (G.C. VERIFY & COORDINATE DOOR UNDERCUT FOR FLOOR MATERIAL)	AA	-	-	H1	J1	-	-	G.C. VERIFY & COORDINATE DOOR UNDERCUT FOR FLOOR MATERIAL
10	B	3'-0" x 7'-0"	1 3/4"	-	LEVER	STEEL	-	-	HA, CLO, DSI, DST (G.C. VERIFY & COORDINATE DOOR UNDERCUT FOR FLOOR MATERIAL)	AA	-	-	H1	J1	-	-	G.C. VERIFY & COORDINATE DOOR UNDERCUT FOR FLOOR MATERIAL
11	B	3'-0" x 7'-0"	1 3/4"	-	LEVER	STEEL	-	-	HA, CLO, DSI, DST (G.C. VERIFY & COORDINATE DOOR UNDERCUT FOR FLOOR MATERIAL)	AA	-	-	H1	J1	-	-	G.C. VERIFY & COORDINATE DOOR UNDERCUT FOR FLOOR MATERIAL
12	B	3'-0" x 7'-0"	1 3/4"	-	LEVER	STEEL	-	-	HA, CLO, DSI, DST (G.C. VERIFY & COORDINATE DOOR UNDERCUT FOR FLOOR MATERIAL)	AA	-	-	H1	J1	-	-	G.C. VERIFY & COORDINATE DOOR UNDERCUT FOR FLOOR MATERIAL

NOTES

- SPECIFIC SELECTION OF DOOR TYPES, THICKNESS, VENER, HINGES, LEVER HANDLES, CLOSERS, PANIC BARS, GLASS LITES, TRIM AND OTHER RELATED DOOR HARDWARE BY OWNER/G.C. (TYP)
- ALL DOORS SHALL BE EQUIPPED WITH LEVER TYPE HANDLES (LVA) AND SHALL BE ADJUSTED TO OPERATE WITH ONE HAND AND SHALL NOT REQUIRE TIGHT GRASPING, PINCHING, OR TWISTING OF THE WRIST. THE FORCE REQUIRED TO ACTIVATE OPERABLE PARTS SHALL BE 5 POUNDS (22.2N) MAXIMUM.
- DOOR CLOSERS SHALL BE ADJUSTED SO THAT FROM AN OPEN POSITION OF 90 DEGREES, THE TIME REQUIRED TO MOVE THE DOOR TO A POSITION OF 12 DEGREES FROM THE LATCH IS 5 SECONDS, MAXIMUM.
- FIRE EXIT PANIC HARDWARE SHALL CONSIST OF LISTED FIRE LABEL WITH LATCHING MECHANISM ON LABELED FIRE RATED DOORS. REQUIRED SET SCREW OR OTHER SHALL NOT BE EQUIPPED WITH ANY LOCKING DEVICE. SET SCREW OR OTHER MECHANISM SHALL BE EQUIPPED WITH ANY LOCKING DEVICE. SET SCREW OR OTHER APPLIED TO THE RELEASING DEVICE.
- G.C. SHALL VERIFY EXISTING EGRESS DOORS AND FRAMES AND VERIFY SIZES, ACCEPTABLE WORKING ORDER AND HARDWARE AS INDICATED IN THIS SCHEDULE (NOTIFY ARCHITECT/ENGINEER OF ANY DEFICIENCIES IN WRITING)
- REFER TO DRAWING A6 FOR CLEARANCES AT DOORS (TYPICAL)
- NOTIFY ARCHITECT BEFORE INSTALLATION FOR EXISTING CONDITIONS IF UNABLE TO PROVIDE CLEARANCES INDICATED.

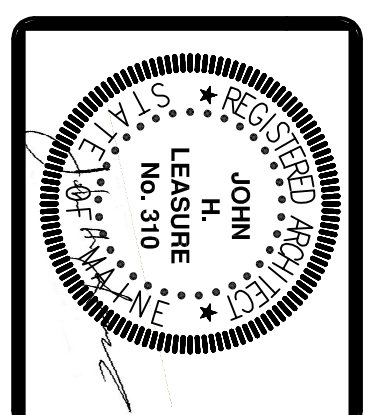
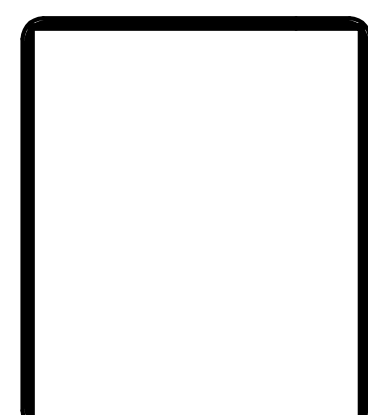


NOTES:

- FOR DOOR CLEARANCES SEE DWG A6 AND FLOOR PLANS.
- CONSULT OWNER FOR NEW DOORS AND RELOCATED DOORS AND HARDWARE REQUIREMENTS. (REFER DRAWING A13)

**PROPOSED LASER TAG AMUSEMENT
SPARE TIME BOWLING
867 RIVERSIDE STREET
PORTLAND, MAINE
DOOR SCHEDULE**

REV.	DATE	STATUS
0	2-26-15	ISSUED FOR PERMITS
2	4-10-15	GENERAL REVISIONS



A11

JOHN H. LEASURE ARCHITECT, INC.
6 Q STREET
SOUTH PORTLAND, MAINE 04106