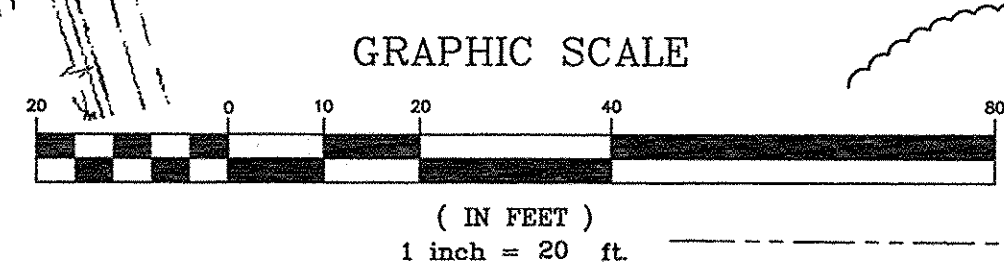
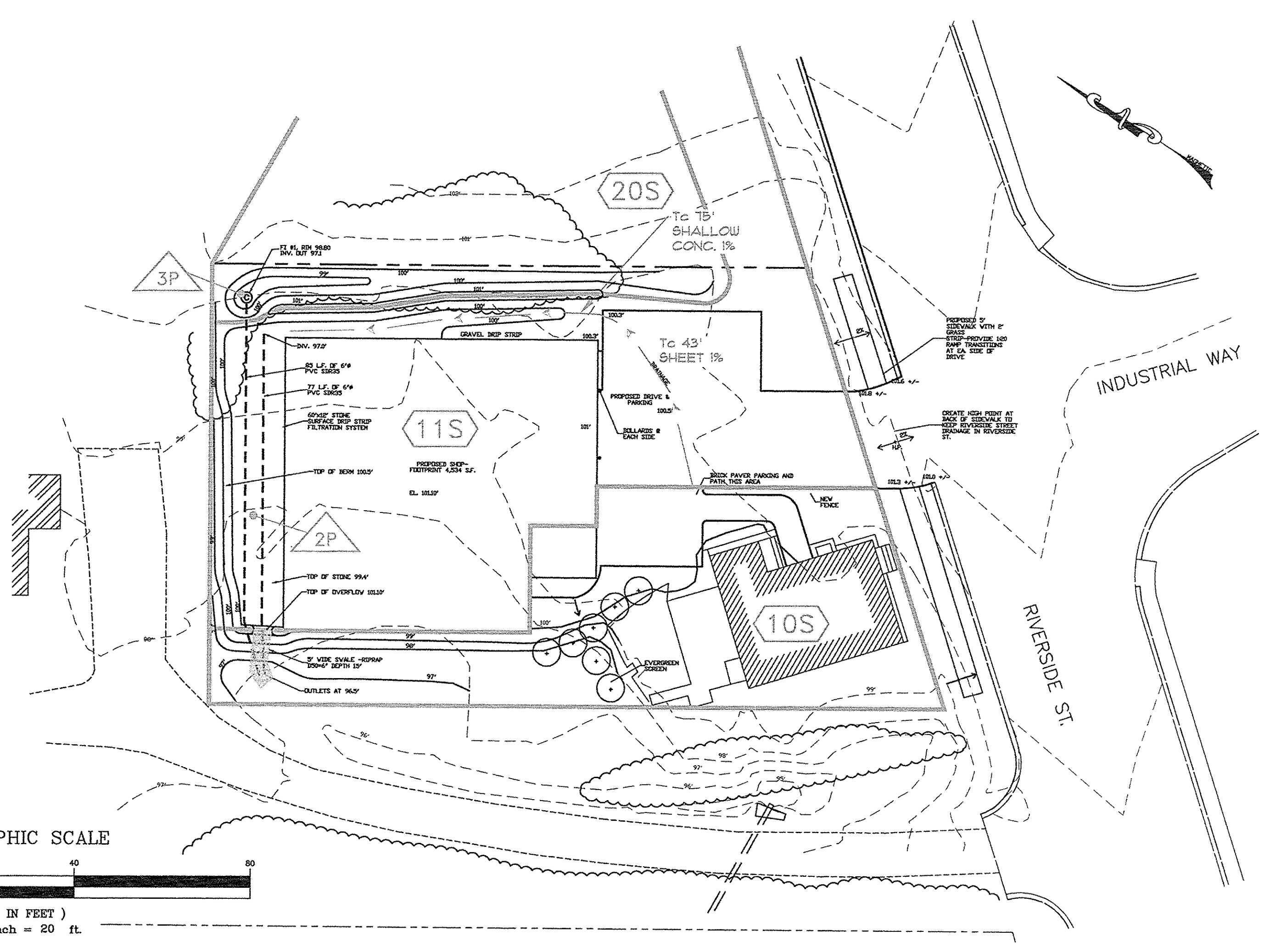


EXISTING DRAINAGE PLAN



SCALE: 1"=20'



PROPOSED DRAINAGE PLAN

SCALE: 1"=20'

REV.	DATE	DESCRIPTION
1	12/24/14	REV'D PER CITY REVIEW

CLEMENTINA PROPERTIES LLC
 1731 WASHINGTON AVENUE
 PORTLAND, MAINE 04103

PAPI AND ROMANO BUILDERS
 828 RIVERSIDE STREET
 PORTLAND, MAINE

SCALE: AS SHOWN
 DATE: NOVEMBER 19, 2014
 PROJECT: 14157

DRN BY: RJS
 DESG BY: TSG
 CHK BY:

DRAINAGE ANALYSIS PLAN