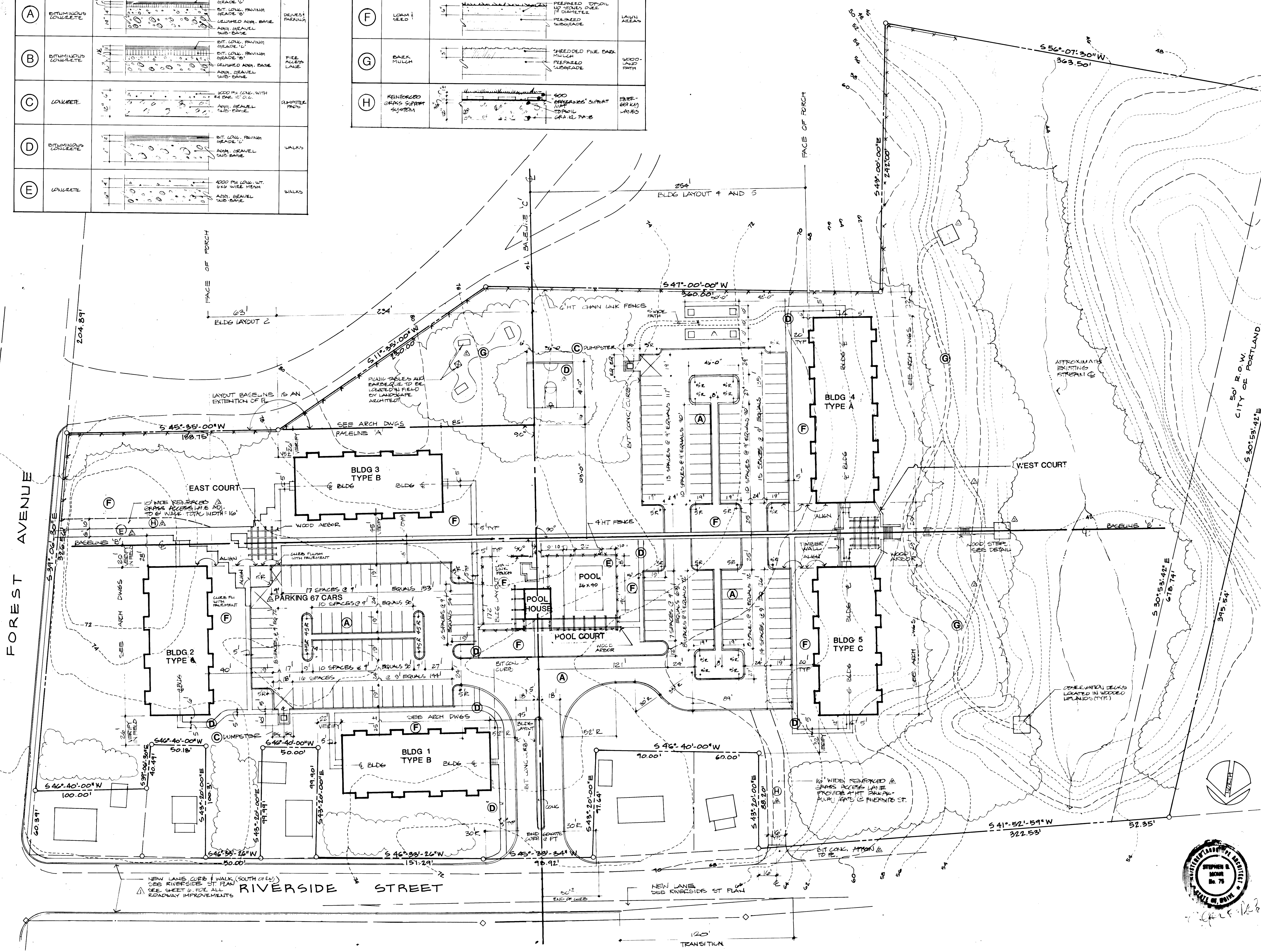


Surface Finishes

SYM.	TYPE	CONSTRUCTION	USE
(A)	BITUMINOUS CONCRETE	BIT. CONC. FINISH GRADE 'U' BIT. CONC. FINISH GRADE 'D' WELDED ASP. BASE ADM. GRAVEL SUB-BASE	DRIVEWAY PARKING
(B)	BITUMINOUS CONCRETE	BIT. CONC. FINISH GRADE 'U' BIT. CONC. FINISH GRADE 'D' WELDED ASP. BASE ADM. GRAVEL SUB-BASE	FREE ACCESS LANE
(C)	CONCRETE	4000 PSI CONC. WITH #4 BAR. 12" C.C. ADM. GRAVEL SUB-BASE	DRIVEWAY PARKING
(D)	BITUMINOUS CONCRETE	BIT. CONC. FINISH GRADE 'U' ADM. GRAVEL SUB-BASE	WALKS
(E)	CONCRETE	4000 PSI CONC. WITH #4 BAR. 12" C.C. ADM. GRAVEL SUB-BASE	WALKS

SYM.	TYPE	CONSTRUCTION	USE
(F)	LOAM & SEED	PREPARED TOPSOIL 1/2" SPACES OVER 1" DIAMETER PREPARED SUBGRADE	LAWN AREAS
(G)	BARK MULCH	SHEDDED FINE BARK MULCH PREPARED SUBGRADE	WOOD- LAND PATH
(H)	REINFORCED CONCRETE SUPPORT SYSTEM	600 CONCRETE'S SUPPORT TOPSOIL GRAVEL PAVE	EVER- GREEN LANDS



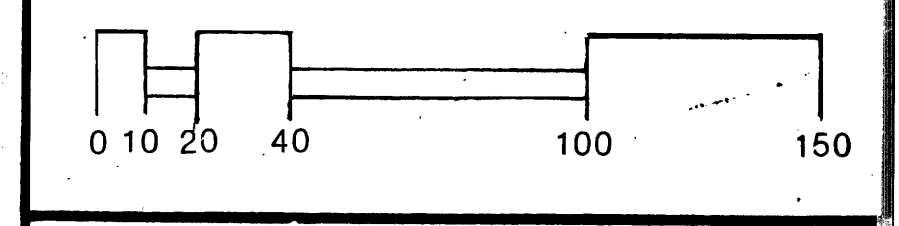
2-1-88	REVISE PERMANENT AND OPERATIONAL DESIGN, ADD FINISH AND A MULTI-PURPOSE COURT 4'x11'x11', ADD FOR LANDSCAPE NOTES TO 10'.
1-21-88	REVISE NORTH SIDE RIVER SIDE ST. 10'x10'.
DATE: 1-16-88	REVISE PERMANENT CONG. WALKS, PLANTER, ONE COMPLETE LOCATION, REMOVING TRAILING COURT, SOME BIT. CONC. WALKS, ALSO PROPOSED PLANTING STRIP, REVISE TRAIL SYSTEM CURB ON RIVERSIDE ST.
DATE: 12-31-87	REVISIONS: SHEET 116.

TERRACE POND
723 RIVERSIDE STREET
PORTLAND, MAINE 04101

Layout Plan

WILLIAM J. DOWD ASSOCIATES
17 COMMERCIAL STREET
PORTLAND, MAINE 04101

DATE: OCT. 23, 1987	JOB NO: 1891
DRN: JCO	CHK: FIELD BK:
SCALE: 1" = 40'	SHEET 2 OF 10



WJDA LAND USE CONSULTANTS
Land Planners - Engineers - Surveyors
17 Commercial Street, Portland, Maine 04101
207-772-8392