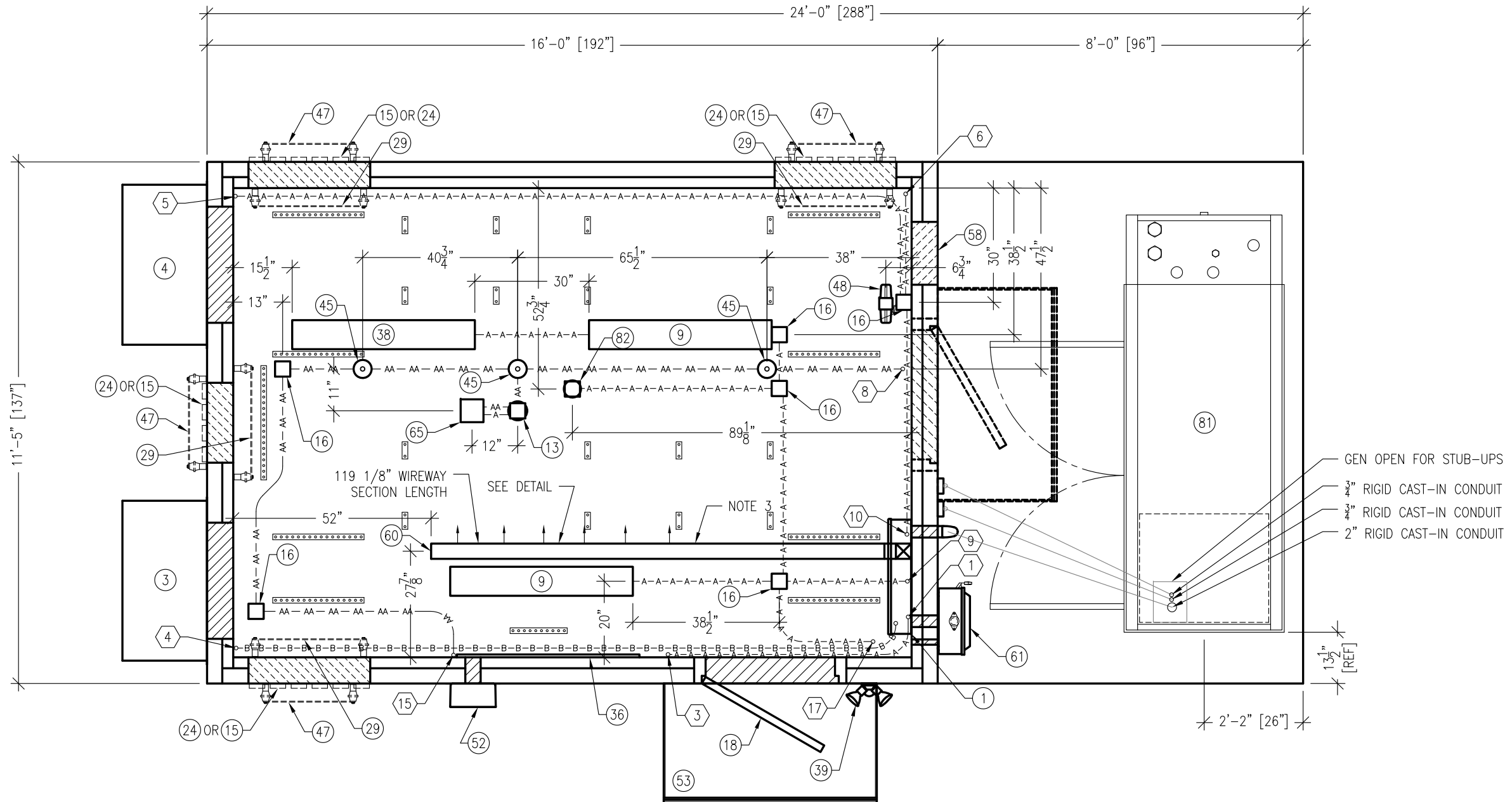


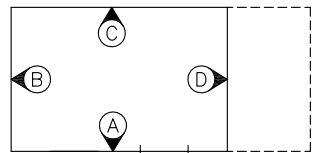
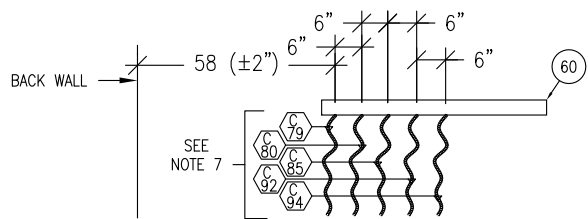
NOTES:

1. ALL MEASUREMENTS SHOWN ARE ACCURATE WITHIN ±1/4" ALL ADJACENT BOXES SHALL BE THE SAME DIMENSION.
2. THE LOCATIONS OF 4" X 4" AND 4 11/16" X 4 11/16" JUNCTION BOXES AND SMALLER ITEMS CAN BE ADJUSTED ±3" AS REQUIRED TO PREVENT INTERFERENCE WITH TRIM PIECES. INTERFERENCE WITH OTHER COMPONENTS WILL REQUIRE TRIM TO BE CUT.
3. MOUNT ON UNISTRUT.
4. CONDUIT SHOULD BE INSTALLED AS SHOWN IF POSSIBLE. ANY CHANGES TO 90° BENDS, OFFSETS AND SADDLES MAY BE DONE WHEN NEEDED AND SHOULD BE UNDER THE GUIDANCE OF A QUALIFIED SENIOR CREW LEADER. ANY CHANGE MUST BE WITHIN THE GUIDELINES OF STANDARD OPERATING PROCEDURE FOR GENERAL CONDUIT RULES.
5. ALL CONDUIT TO HAVE A MINIMUM OF 3/4" BETWEEN THEM.
6. ALL CONDUIT TO BE 1/2" UNLESS OTHERWISE NOTED.
7. PULL 8'-0" OF FLEXIBLE METALLIC CONDUIT TO FLOOR. CONNECT TO ITEM (60) WITH 45° CONNECTOR. TYWRAP A 90° CONNECTOR TO EACH FLEXIBLE METALLIC CONDUIT.
8. ITEMS 15, 24, 29, 37, 47 AND 59 ARE SHOWN IN ALL OPTIONAL LOCATIONS. INSTALL ONLY AT INSTALLED WAVEGUIDE, LOCATE AS SHOWN ON ELEVATION VIEW. SEE BUILDING COVERSHEET FOR SELECTED LOCATIONS.
9. REMOVED NOTE
10. ALL LIGHT SWITCHES TO BE MOUNTED AT 54" A.F.F. UNLESS NOTED OTHERWISE.
11. ALL RECEPTACLES TO BE MOUNTED AT 18" A.F.F. UNLESS NOTED OTHERWISE.
12. ALL CONDUIT SHALL BE EMT UNLESS OTHERWISE NOTED.
13. ALL CONDUIT THROUGH A WALL SHALL BE RIGID UNLESS OTHERWISE NOTED.



| CONDUIT KEY | | |
|-------------|-------------|-------------|
| A.C. | LOW VOLTAGE | PVC |
| A = 1/2" | AA = 1/2" | XA = 1/2" |
| B = 3/4" | BB = 3/4" | XB = 3/4" |
| C = 1" | CC = 1" | XC = 1" |
| D = 1 1/4" | DD = 1 1/4" | XD = 1 1/4" |
| E = 1 1/2" | EE = 1 1/2" | XE = 1 1/2" |
| F = 2" | FF = 2" | XF = 2" |
| G = 2 1/2" | GG = 2 1/2" | XG = 2 1/2" |
| H = 3" | HH = 3" | XH = 3" |
| I = 3 1/2" | II = 3 1/2" | XI = 3 1/2" |
| J = 4" | JJ = 4" | XJ = 4" |

○○○○○○ = FLEXIBLE NONMETALLIC CONDUIT



ELEVATION KEY

| | | | | | | | | | | | |
|---|----|------|----------|--|------|-----|------|----------------------------------|--------------|--------------|---------|
| THESE PLANS ARE THE CONFIDENTIAL PROPERTY AND TRADE SECRETS OF FIBREBOND CORPORATION. ANY USE OF THESE DRAWINGS OR THE INFORMATION CONTAINED HEREIN FOR ANY REASON OTHER THAN AS EXPRESSLY AUTHORIZED BY FIBREBOND CORPORATION IS STRICTLY PROHIBITED. THESE DRAWINGS HAVE BEEN DISTRIBUTED WITH THE UNDERSTANDING THAT ANYONE RECEIVING OR OTHERWISE OBTAINING POSSESSION OF THEM WILL BE EXPRESSLY NOTIFIED OF THEIR CONFIDENTIAL NATURE. | | | | 1300 DAVENPORT DRIVE MINDEN, LA. 71055 ph. (800) 824-2614 www.fibrebond.com | | | | | | | |
| | | | | AT&T MOBILITY | | | | SCALE: 3/8"=1'-0" SHEET NO.: 2-1 | | | |
| | | | | 11'-5" X 24'-0" PATIO SHELTER | | | | DWG NO.: D-9312 | | | |
| | | | | INTERIOR CEILING VIEW | | | | | | | |
| REV. | BY | DATE | REVISION | APP. | DATE | BOM | DATE | DRN. BY: CSP | DATE: 6/5/13 | APP. BY: CSP | DATE: - |
| | | | | | | | | CHK. BY: | DATE: | APP. BY: MG | DATE: - |