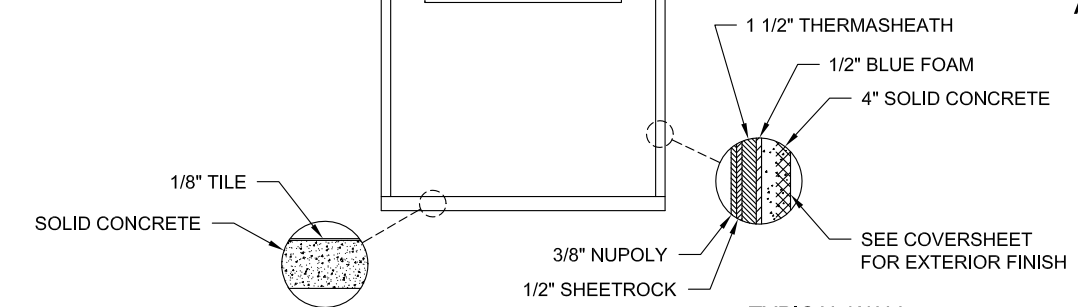
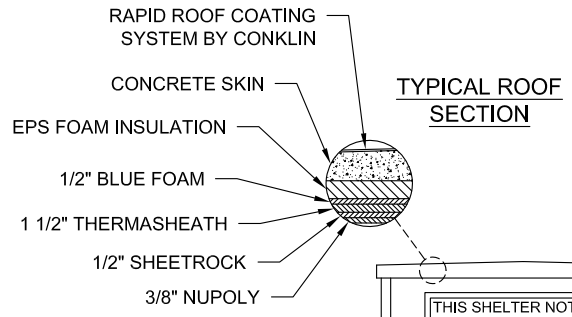
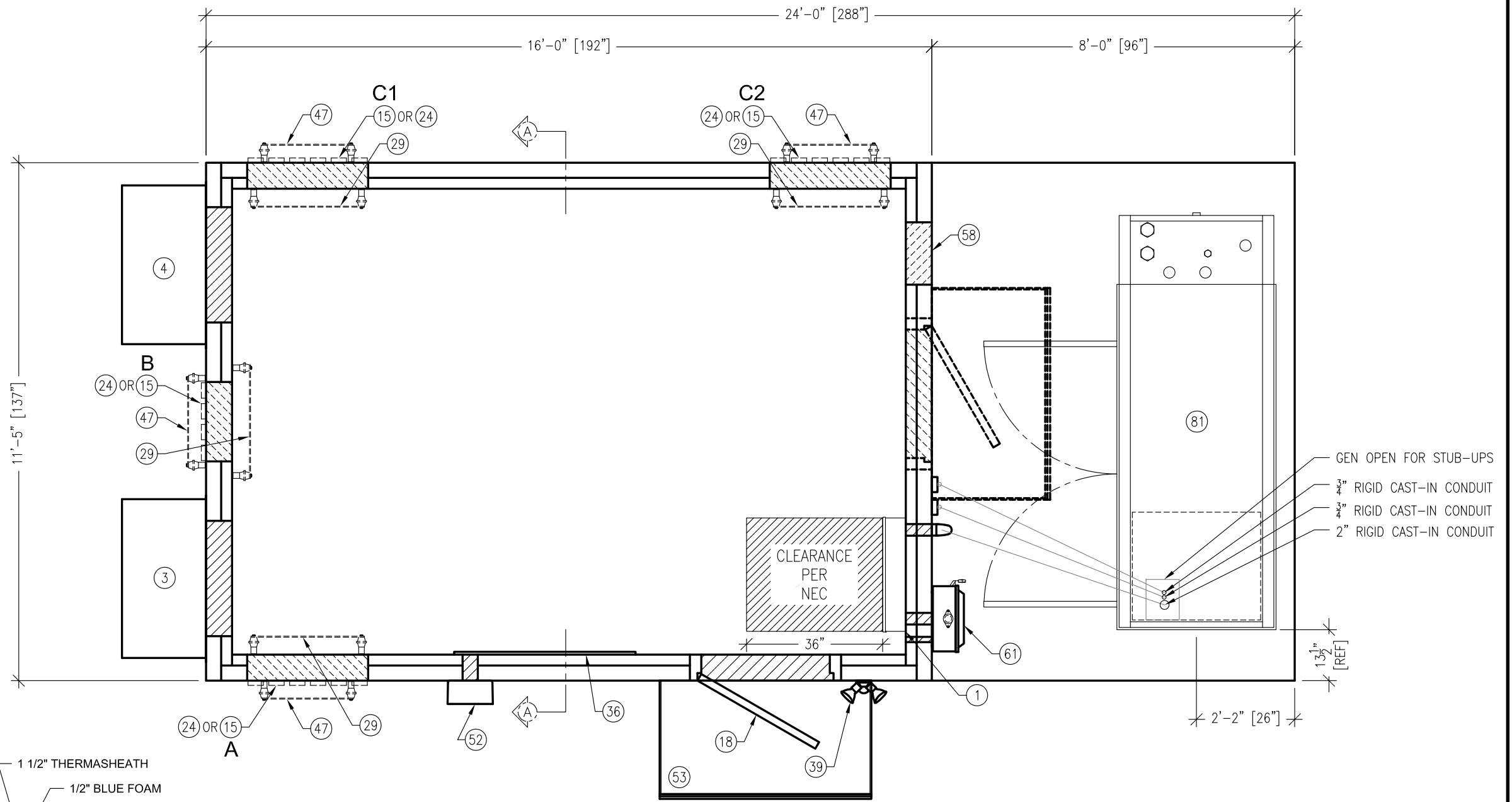
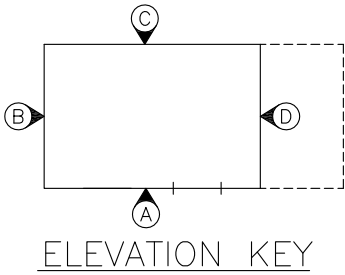


- NOTE:**
1. ALL ITEMS MARKED FIELDWORK SHALL BE INSTALLED, TESTED, REMOVED & PACKED IN BUILDING PRIOR TO SHIPMENT.
 2. ITEM 15, 24, 29 & 47 ARE SHOWN IN ALL OPTIONAL LOCATIONS. SEE BUILDING COVERSHEET FOR SELECTED LOCATIONS.
 3. SECURE WITH LOCKNUTS AND REDUCING WASHER. CAP OFF PENETRATION. DO NOT GLUE.
 4. CONNECT #2 SOLID TINNED WITH TWO-BOLT HOLE NON-COMPRESSION 1 SET SCREW TYPE LUG. PULL TO GROUND AND COIL 8'-0" SPARE.
 5. CONNECT #2 SOLID TINNED WITH TWO-BOLT HOLE NON-COMPRESSION 1 SET SCREW TYPE LUG. TO DOOR FRAME AND CANOPY.
 6. SEE HALO GROUND DETAIL SHEET FOR DETAILS.
 7. SEE MISC INTERIOR DETAILS SHEET FOR EXTERIOR GROUND BAR MOUNTING HARDWARE AND DETAIL.
 8. ASSEMBLE CONNECTORS AND SEALTIGHT TO RIGID CAST-IN CONDUITS.



SECTION "A-A"
SCALE: N.T.S.

FLOOR PLAN
274.0 sq. ft



REV.	BY	DATE	REVISION	APP.	DATE	BOM	DATE

THESE PLANS ARE THE CONFIDENTIAL PROPERTY AND TRADE SECRETS OF FIBREBOND CORPORATION. ANY USE OF THESE DRAWINGS OR THE INFORMATION CONTAINED HEREIN FOR ANY REASON OTHER THAN AS EXPRESSLY AUTHORIZED BY FIBREBOND CORPORATION IS STRICTLY PROHIBITED. THESE DRAWINGS HAVE BEEN DISTRIBUTED WITH THE UNDERSTANDING THAT ANYONE RECEIVING OR OTHERWISE OBTAINING POSSESSION OF THEM WILL BE EXPRESSLY NOTIFIED OF THEIR CONFIDENTIAL NATURE.

1300 DAVENPORT DRIVE MINDEN, LA. 71055
ph. (800) 824-2614 www.fibrebond.com

AT&T MOBILITY
11'-5" X 24'-0" PATIO SHELTER
FLOOR PLAN

DRN. BY: CSP	DATE: 6/5/13	APP. BY: CSP	DATE: -
CHK. BY:	DATE:	APP. BY: MG	DATE: -

SCALE: 3/8"=1'-0"
SHEET NO.: 1-1
DWG NO.: D-9312