

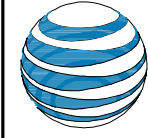


Reviewed for Code Compliance
Inspections Division
Approved with Conditions



NB+C ENGINEER
1777 CENTR
DUBLIN
BLUE I
USA

Date: 07/08/14

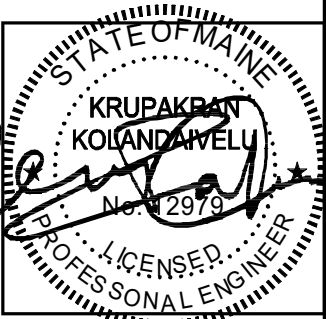


at&t
mobility corp.
550 COCUMTATE ROAD
FRAMINGHAM, MA 01701

ME5372
LUCAS TREE
636 RIVERSIDE STREET
PORTLAND, ME 04103
CITY OF PORTLAND

REVISIONS

REV	DATE	DESCRIPTION	BY
3	06/06/14	REVISED PER COMMENTS	DAK
2	05/22/14	PRELIMINARY CDs	DAK
1	03/20/14	REVISED PER COMMENTS	DAK
0	10/10/13	PRELIMINARY ZDs	DAK



KRUPAKARAN KOLANDAIVELU P.E.
ME PROFESSIONAL ENGINEER LIC. #12979

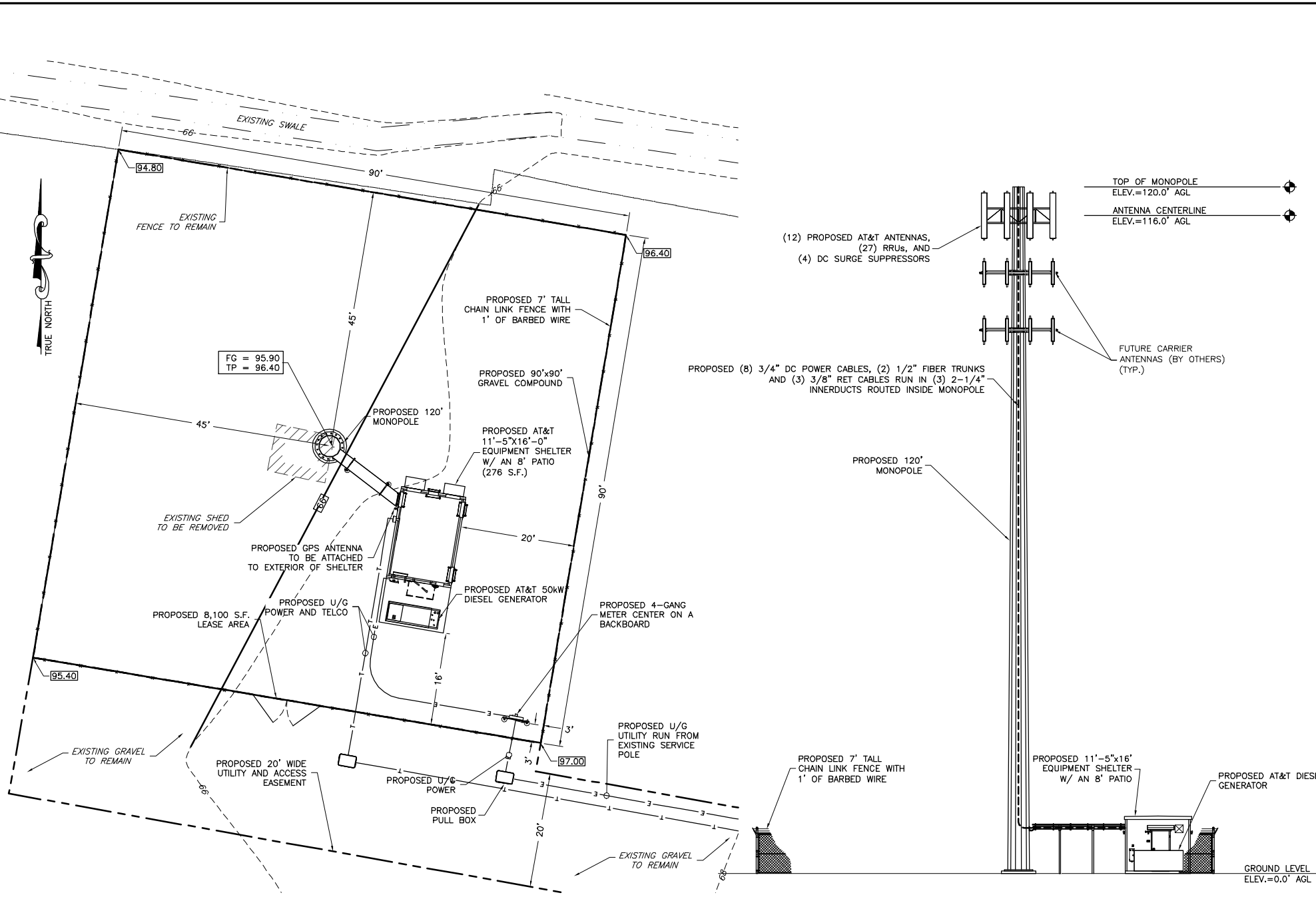
IT IS A VIOLATION OF THE LAW FOR ANY PERSON UNLESS THEY ARE ACTING UNDER THE DIRECTION OF A LICENSED PROFESSIONAL ENGINEER TO ALTER THIS DOCUMENT UNLESS EXPLICITLY AGREED TO BY THE ENGINEER IN WRITING. THE ENGINEER DISCLAIMS ALL LIABILITY ASSOCIATED WITH THE REVISION, ALTERATION OR MODIFICATION OF THE CONTENTS HEREIN.

COMPOUND & ELEVATION PLAN

C-1

GENERAL NOTES

- ALL SITE WORK SHALL BE AS INDICATED ON THE DRAWINGS.
- THE CONTRACTOR SHALL COMPLY WITH ALL APPLICABLE CODES ORDINANCES, LAWS AND REGULATIONS OF ALL MUNICIPALITIES, UTILITIES COMPANY OR OTHER PUBLIC AUTHORITIES.
- THE CONTRACTOR SHALL BE RESPONSIBLE FOR OBTAINING ALL PERMITS AND INSPECTIONS THAT MAY BE REQUIRED BY ANY FEDERAL, STATE, COUNTY OR MUNICIPAL AUTHORITIES.
- THE CONTRACTOR SHALL NOTIFY THE CONSTRUCTION MANAGER, IN WRITING, OF ANY CONFLICTS, ERRORS OR OMISSIONS PRIOR TO THE SUBMISSION OF BIDS OR PERFORMANCE OF WORK. MINOR OMISSIONS OR ERRORS IN THE BID DOCUMENTS SHALL NOT RELIEVE THE CONTRACTOR FROM RESPONSIBILITY FOR THE OVERALL INTENT OF THESE DRAWINGS.
- THE CONTRACTOR SHALL BE RESPONSIBLE FOR PROTECTING ALL EXISTING SITE IMPROVEMENTS PRIOR TO COMMENCING CONSTRUCTION. THE CONTRACTOR SHALL REPAIR ANY DAMAGE CAUSED AS A RESULT OF CONSTRUCTION OF THIS FACILITY.
- THE SCOPE OF WORK FOR THIS PROJECT SHALL INCLUDE PROVIDING ALL MATERIALS, EQUIPMENT AND LABOR REQUIRED TO COMPLETE THIS PROJECT. ALL EQUIPMENT SHALL BE INSTALLED IN ACCORDANCE WITH THE MANUFACTURER'S RECOMMENDATIONS.
- THE CONTRACTOR SHALL VISIT THE PROJECT SITE PRIOR TO SUBMITTING A BID TO VERIFY THAT THE PROJECT CAN BE CONSTRUCTED IN ACCORDANCE WITH THE CONTRACT DOCUMENTS.
- CONTRACTOR SHALL MAKE A UTILITY "ONE CALL" TO LOCATE ALL UTILITIES AND NOTIFY UNDERGROUND FACILITIES PROTECTIVE ORGANIZATION AT 1 (888) 344-7233 PRIOR TO EXCAVATION AT SITE.
- ANY UNDERGROUND UTILITIES OR STRUCTURES THAT EXIST BENEATH THE PROJECT AREA, CONTRACTOR MUST LOCATE IT AND CONTACT THE APPLICANT & THE OWNER'S REPRESENTATIVE.
- OCCUPANCY IS LIMITED TO PERIODIC MAINTENANCE AND INSPECTION BY TECHNICIANS APPROXIMATELY 2 TIMES PER MONTH.
- ALL EXCAVATION WITHIN 36" OF EITHER SIDE OF UNDERGROUND UTILITIES MUST BE COMPLETED BY HAND EXCAVATION METHODS.
- NO SIGNIFICANT NOISE, SMOKE, DUST, OR ODOR WILL RESULT FROM THIS FACILITY.
- THE FACILITY IS UNMANNED AND NOT INTENDED FOR HUMAN HABITATION (NO HANDICAP ACCESS REQUIRED).
- THE FACILITY IS UNMANNED AND DOES NOT REQUIRE POTABLE WATER OR SANITARY SERVICE.
- POWER TO THE FACILITY WILL BE MONITORED BY A SEPARATE METER.
- THERE ARE NO COMMERCIAL SIGNS PROPOSED FOR THIS INSTALLATION.
- RUBBISH, STUMPS, DEBRIS, STICKS, STONES AND OTHER REFUSE SHALL BE REMOVED FROM THE SITE AND DISPOSED OF LEGALLY.
- NO FILL OR EMBANKMENT MATERIAL SHALL BE PLACED ON FROZEN GROUND. FROZEN MATERIALS, SNOW OR ICE SHALL NOT BE PLACED IN ANY FILL OR EMBANKMENT.
- THE SUBGRADE SHALL BE COMPACTED AND BROUGHT TO A SMOOTH UNIFORM GRADE PRIOR TO FINISHED SURFACE APPLICATION.
- ALL EXISTING ACTIVE SEWER, WATER, GAS, ELECTRIC, AND OTHER UTILITIES WHERE ENCOUNTERED IN THE WORK, SHALL BE PROTECTED AT ALL TIMES, AND WHERE REQUIRED FOR THE PROPER EXECUTION OF THE WORK, SHALL BE RELOCATED AS DIRECTED BY ENGINEERS. EXTREME CAUTION SHOULD BE USED BY THE CONTRACTOR WHEN EXCAVATING OR PIER DRILLING AROUND OR NEAR UTILITIES.
- ALL EXISTING INACTIVE SEWER, WATER, GAS, ELECTRIC AND OTHER UTILITIES, WHICH INTERFERE WITH THE EXECUTION OF THE WORK, SHALL BE REMOVED AND/OR CAPPED, PLUGGED OR OTHERWISE DISCONTINUED AT POINTS WHICH WILL NOT INTERFERE WITH THE EXECUTION OF THE WORK, SUBJECT TO THE APPROVAL OF ENGINEERING.
- THE AREAS DISTURBED DUE TO CONSTRUCTION ACTIVITY SHALL BE GRADED TO A UNIFORM SLOPE, FERTILIZED, SEEDED, AND COVERED WITH MULCH.
- CONTRACTOR SHALL MINIMIZE DISTURBANCE TO EXISTING SITE DURING CONSTRUCTION. EROSION CONTROL MEASURES, IF REQUIRED DURING CONSTRUCTION, SHALL BE IN CONFORMANCE WITH THE STATE OF MAINE STATE GUIDELINES FOR EROSION AND SEDIMENT CONTROL, AND COORDINATED WITH THE CITY. CONTROL MEASURES SHALL INCLUDE BUT NOT LIMITED TO FILTER FABRIC SILT FENCE, ROCK CONSTRUCTION ENTRANCE, CONCRETE WASHOUT AREA, TEMPORARY SOIL STOCKPILE, ETC.



1 COMPOUND PLAN
SCALE: 1" = 10'

2 ELEVATION
SCALE: 1" = 10'



Know what's below.
Call before you dig.

