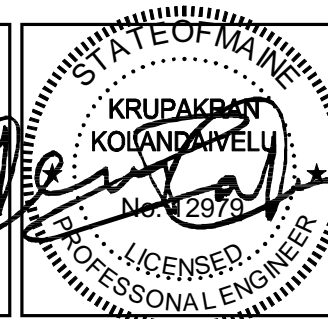


REVISIONS

REV	DATE	DESCRIPTION	BY
3	06/06/14	REVISED PER COMMENTS	DAK
2	05/22/14	PRELIMINARY CDs	DAK
1	03/20/14	REVISED PER COMMENTS	DAK
0	10/10/13	PRELIMINARY ZDs	DAK



ENGINEER
KRUPAKARAN KOLANDAVELU P.E.
ME PROFESSIONAL ENGINEER LIC. #12979

SHEET TITLE
DETAILS

SHEET NUMBER
A-2

ENGINEER

APPLICANT

SITE INFORMATION

DESIGN RECORD

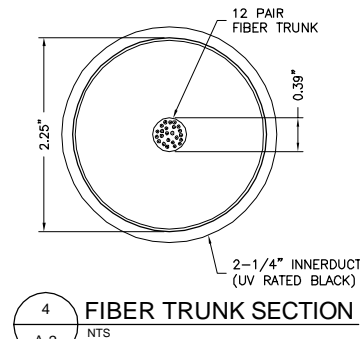
PROFESSIONAL STAMP

ENGINEER

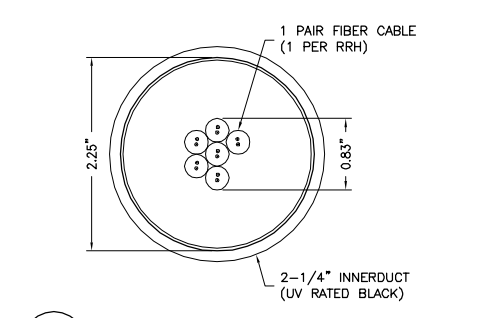
SHEET TITLE

SHEET NUMBER

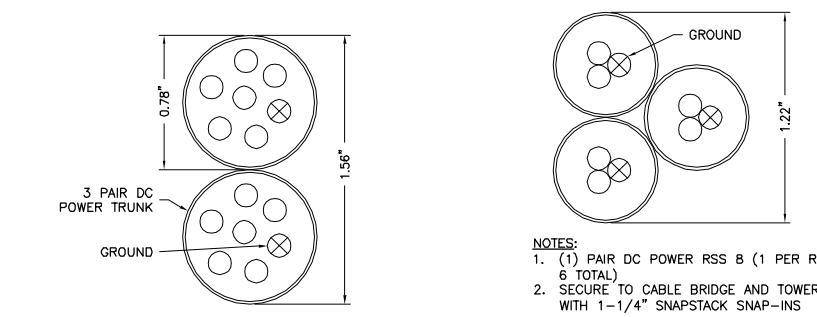
SINGLE FIBER 7MM/0.28"
USE GROMMET ROSENBERGER: CX603-HA0711 ANT: 13854 WITH 7/8" SNAPSTACK SNAP-INS
SINGLE PAIR DC POWER 15.4MM/0.61"
USE GROMMET ROSENBERGER: CX604-HA1117 ANT: 13853 WITH 7/8" SNAPSTACK SNAP-INS



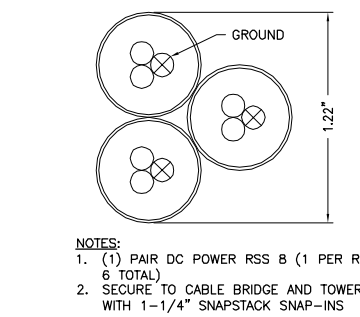
4 FIBER TRUNK SECTION
A-2 NTS



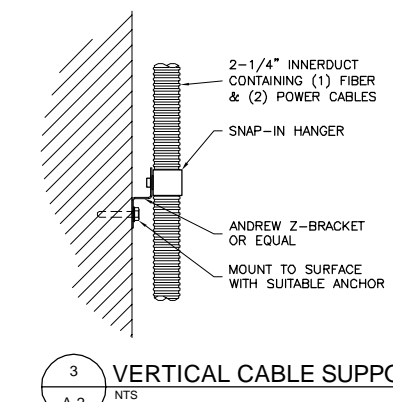
7 6 SINGLE 1 PAIR FIBER SECTION
A-2 NTS



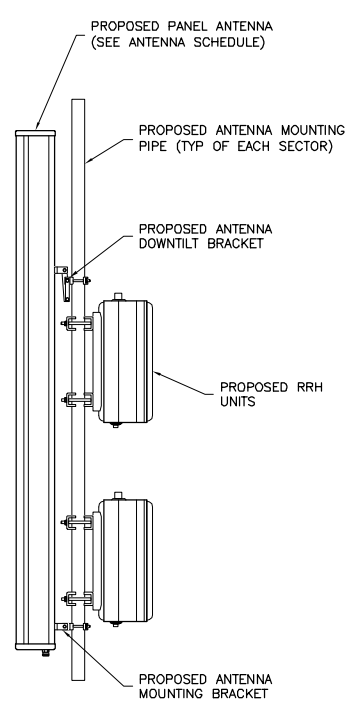
8 3 PAIR DC POWER SECTION
A-2 NTS



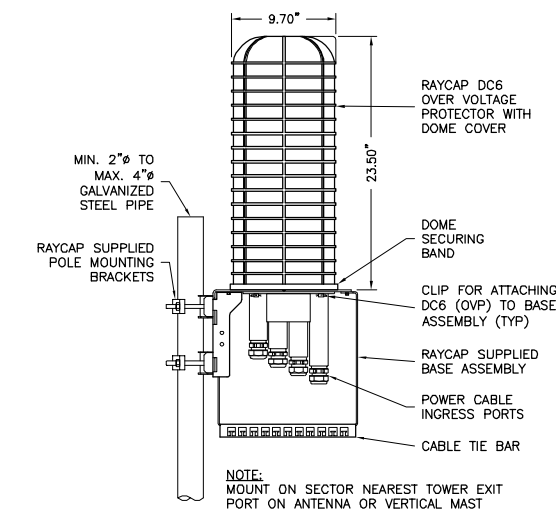
9 1 PAIR POWER SECTION
A-2 NTS



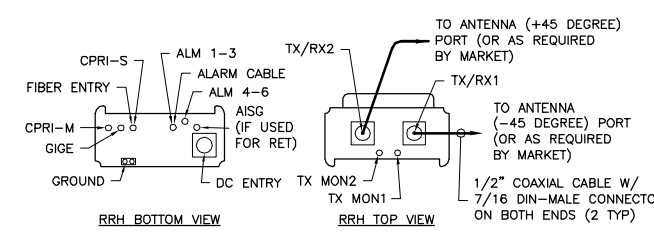
3 VERTICAL CABLE SUPPORT
A-2 NTS



2 RRH MOUNTING DETAIL
A-2 NTS



1 RAYCAP DC6-48-60-18-8F (SQUID)
A-2 NTS

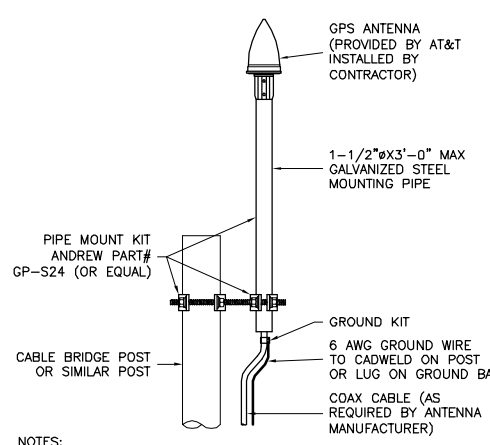


NOTE: DIMENSIONS INCLUDE MOUNTING BRACKET, SOLAR SHIELD AND CONNECTORS.

MINIMUM CLEARANCE TABLE

RRH CABINET	CLEARANCES (INCHES)	COMMENTS
FRONT	36.0"	INSTALLATION ACCESS
REAR	2.0"	ZERO REAR CLEARANCE IS ALLOWED USING SUPPLIED MOUNTING BRACKETS
RIGHT	4.0"	AIR FLOW
LEFT	4.0"	AIR FLOW
TOP	12.0"	AIR FLOW
BOTTOM	12.0"	CONDUIT ROUTING

5 ERICSSON RRUS 11 REMOTE RADIO HEAD (RRH)
A-2 NTS



6 GPS ANTENNA MOUNTING DETAIL
A-2 NTS

- NOTES:
- LOCATION OF ANTENNA MUST HAVE CLEAR VIEW OF SOUTHERN SKY AND CANNOT HAVE ANY BLOCKAGES EXCEEDING 25% OF THE SURFACE AREA OF A HEMISPHERE AROUND THE GPS ANTENNA.
 - ALL GPS ANTENNA LOCATIONS MUST BE ABLE TO RECEIVE CLEAR SIGNALS FROM A MINIMUM OF FOUR (4) SATELLITES. VERIFY WITH HANDHELD GPS BEFORE FINAL LOCATION OF GPS ANTENNA.