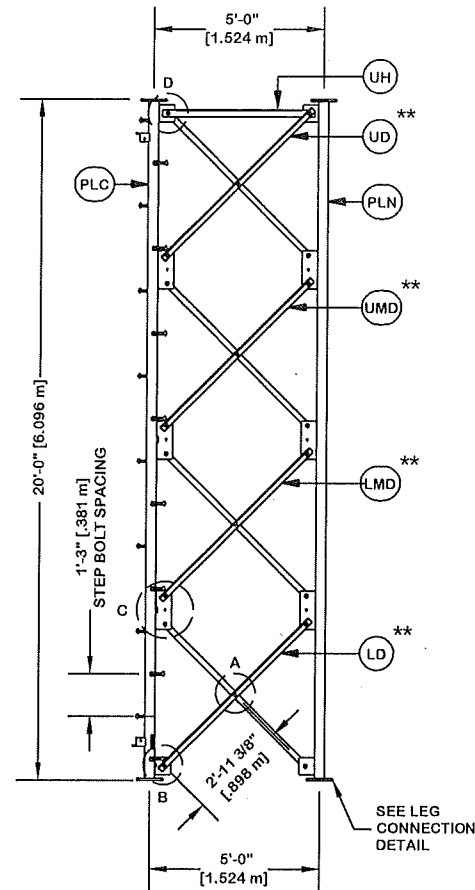


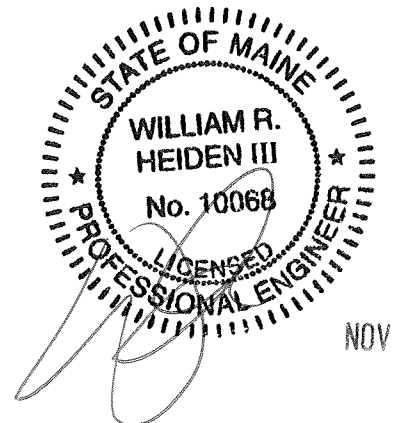
ORIENT LEGS WITH P/N STAMP
TOWARD BOTTOM OF SECTION

INSTALL ANGLES WITH STAMPED
END TOWARD TOP OF SECTION

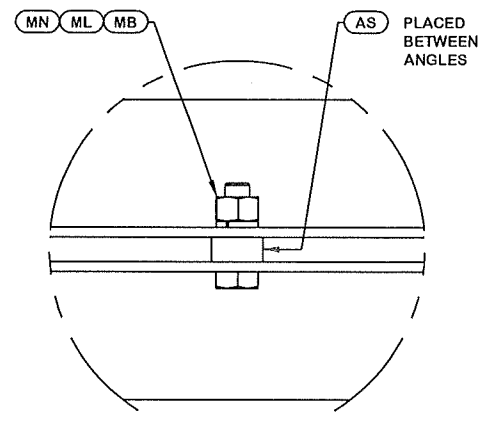
** DIAGONAL ANGLES MUST BE INSTALLED
WITH THE NON-BOLTED FACE UP, ↑↑
THIS MAY BE ON THE OPPOSITE SIDE OF THE
SIDE PLATE THAN WHAT IS SHOWN IN THE DETAIL.



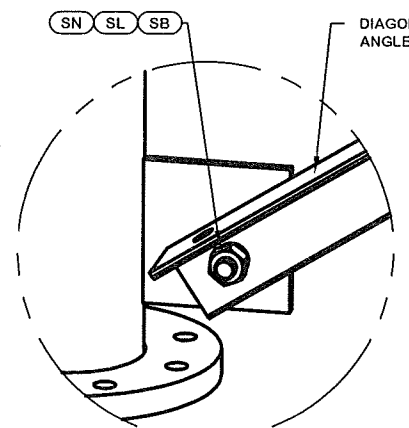
PARTS LIST					
ITEM	QTY	PART NO.	PART DESCRIPTION	UNIT WT.	NET WT.
PLC	1	226160	PIPE LEG SECTION 20'-0" (CLIMBING) 2 1/2" SCH. 40	194.380	194.380
PLN	2	226161	PIPE LEG SECTION 20'-0" (NON-CLIMBING) 2 1/2" SCH.	189.170	378.340
STP	16	228189	STEP BOLT ASSY 5/8"-11 X 7" W/LOCK WASHER HEAVY	1.100	17.600
UD, UMD, LMD, AND LD	24	227077	ANGLE V-5 STR 74 7/32" - 2" X 2" X 1/8" ANGLE (A36)	10.710	257.040
ML	12	312123	5/8" GALVANIZED LOCKWASHER (53-22230)	0.020	0.240
AS	12	116467	SPACER 1/4" THICK 1 1/16" DIA HOLE	0.250	3.000
MB	12	227580	5/8"-11 X 2-1/4" A325T HOT DIPPED GALV. BOLT (FULL	0.640	7.680
MN	12	312501	5/8"-11 HOT DIPPED GALVANIZED NUT	0.120	1.440
SL	48	312153	3/4" GALVANIZED LOCKWASHER	0.030	1.440
SN	48	312502	3/4"-10 HOT DIPPED GALVANIZED NUT	0.190	9.120
SB	48	227579	3/4"-10 X 2-1/4" A-325T BOLT WITH FULL THREAD	0.420	20.160
UH	3	227584	UPPER HORIZONTAL BRACE ANGLE FOR V-SERIES TOWER (2	10.630	31.890
LCB	12	227668	3/4"-10 X 3-1/2" A-325T BOLT WITH FULL THREAD	0.540	6.480
LCF	12	312152	3/4" GALVANIZED FLAT WASHER (F436)	0.080	0.960
LCL	12	312153	3/4" GALVANIZED LOCKWASHER	0.030	0.360
LCN	12	312502	3/4"-10 HOT DIPPED GALVANIZED NUT	0.190	2.280
Total Wt				932.41 lb [423.32kg]	



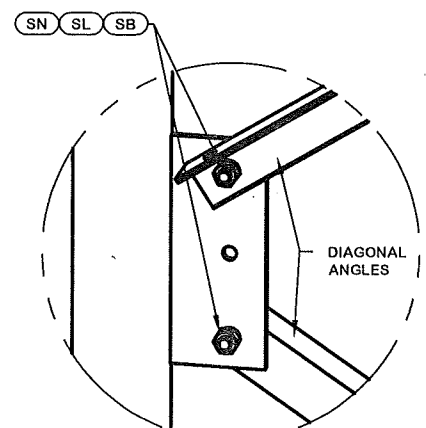
NOV 15 2016



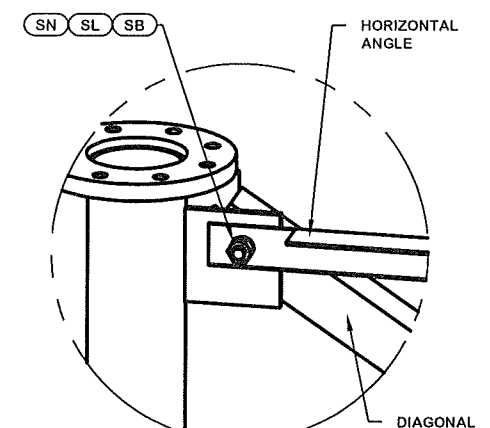
DETAIL A
ANGLE INTERSECTION CONNECTION



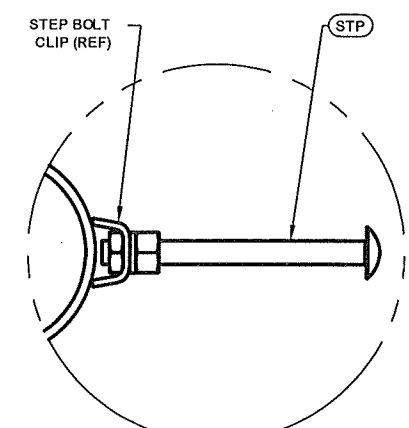
DETAIL B
END SIDE PLATE ANGLE CONNECTION



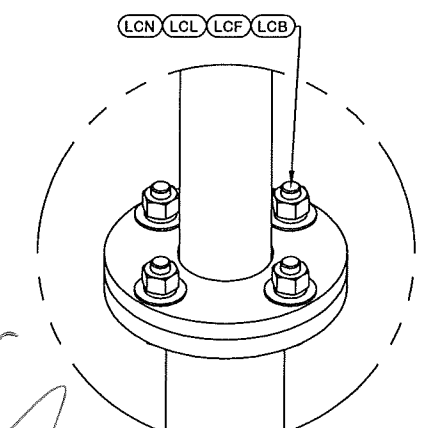
DETAIL C
MID SIDE PLATE ANGLE CONNECTION



DETAIL D
UPPER HORIZONTAL ANGLE CONNECTION



STEP BOLT INSTALLATION



LEG TO LEG CONNECTION
(SIDE PLATES NOT SHOWN FOR CLARITY)

@A	<ACBATCH>	SKK	8/10/2016
REV	DESCRIPTION OF REVISIONS	CPD	BY DATE
REVISION HISTORY			

SITE	CITY OF PORTLAND FD, ME MOTOROLA SOLUTIONS U 19 X 180'
COPYRIGHT 2013	
PROPRIETARY NOTE:	THE DATA AND TECHNIQUES CONTAINED IN THIS DRAWING ARE PROPRIETARY INFORMATION OF VALMONT INDUSTRIES AND CONSIDERED A TRADE SECRET. ANY USE OR DISCLOSURE WITHOUT THE CONSENT OF VALMONT INDUSTRIES IS STRICTLY PROHIBITED.

DESCRIPTION	SECTION V-5.0 (160' - 180' ELEVATION)
STRUCTURE APPROVAL	SKK 8/10/2016
FOUNDATION APPROVAL	

1-877-467-4763 Plymouth, IN 1-800-547-2151 Salem, OR	
ENG. FILE NO.	324370
DWG. NO.	268614T