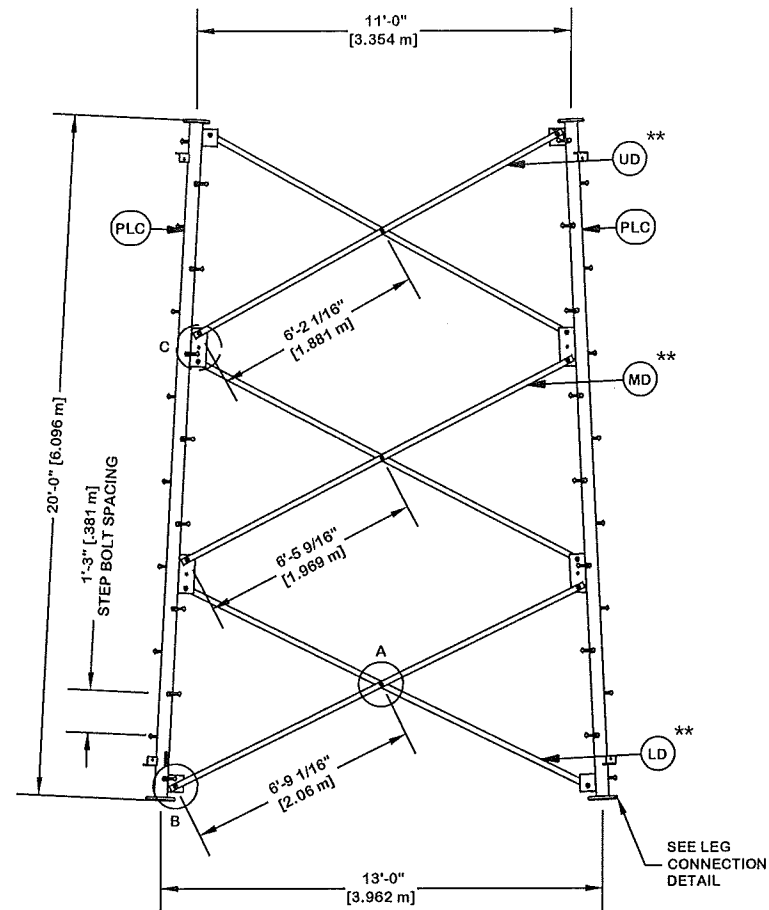


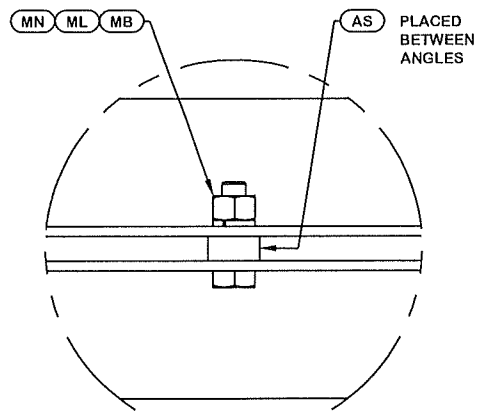
ORIENT LEGS WITH P/N STAMP
TOWARD BOTTOM OF SECTION

ORIENT ANGLES WITH STAMPED
END TOWARD TOP OF SECTION

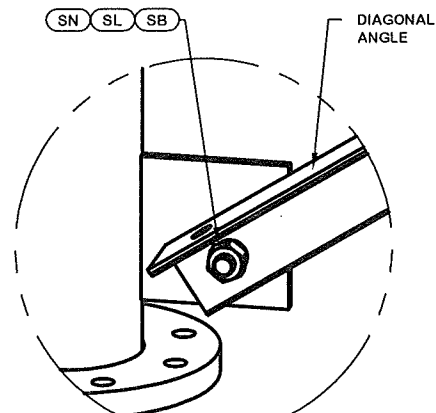
** DIAGONAL ANGLES MUST BE INSTALLED
WITH THE NON-BOLTED FACE UP. ↑↑
THIS MAY BE ON THE OPPOSITE SIDE OF THE
SIDE PLATE THAN WHAT IS SHOWN IN THE DETAIL.



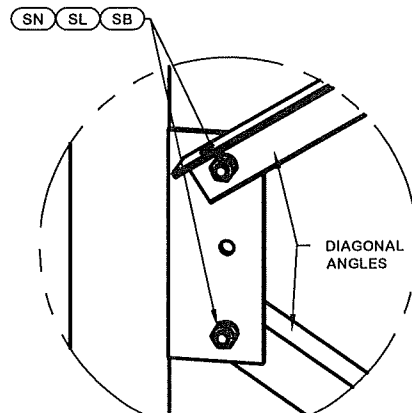
PARTS LIST					
ITEM	QTY	PART NO.	PART DESCRIPTION	UNIT WT.	NET WT.
PLC	3	229377	PIPE LEG SECTION 20'-0" (CLIMBING) 6" SCH. 40 V-SE	537.940	1613.820
STP	48	228189	STEP BOLT ASSY 5/8"-11 X 7" W/ LOCK WASHER HEAVY	1.100	52.800
LD	6	231349	ANGLE V-13 LOW 160 1/16"(W/45 CLIPPED)	43.000	258.000
MB	9	227580	5/8"-11 X 2-1/4" A325T HOT DIPPED GALV. BOLT (FULL	0.640	5.760
AS	9	124838	MID-DIAGONAL SPACER 1 1/16" HOLE 3/8" THICK	0.450	4.050
MN	9	312501	5/8"-11 HOT DIPPED GALVANIZED NUT	0.120	1.080
ML	9	312123	5/8" GALVANIZED LOCKWASHER (53-22230)	0.020	0.180
SL	36	312153	3/4" GALVANIZED LOCKWASHER	0.030	1.080
SN	36	312502	3/4"-10 HOT DIPPED GALVANIZED NUT	0.190	6.840
SB	36	227579	3/4"-10 X 2-1/4" A-325T BOLT WITH FULL THREAD	0.420	15.120
MD	6	226209	ANGLE V-13 MID 152 15/16"	41.080	246.480
UD	6	227341	ANGLE V-13 UP 145 15/16"	39.200	235.200
LCB	18	222016	1"-8 X 4-3/4" A-325 BOLT WITH 1-3/4" THREAD	1.380	24.840
LCF	18	312222	1" GALVANIZED FLAT WASHER (F436)	0.140	2.520
LCL	18	312223	1" GALVANIZED LOCKWASHER	0.080	1.440
LCN	18	312504	1"-8 HOT DIPPED GALVANIZED NUT	0.430	7.740
Total Wt				2476.95 lb [1124.56kg]	



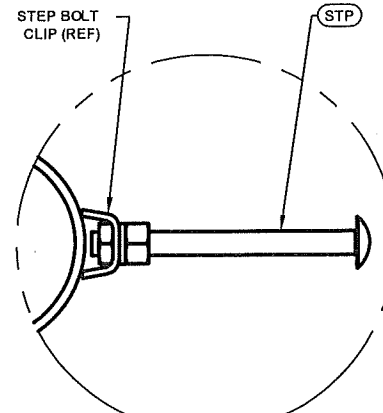
DETAIL A
ANGLE INTERSECTION CONNECTION



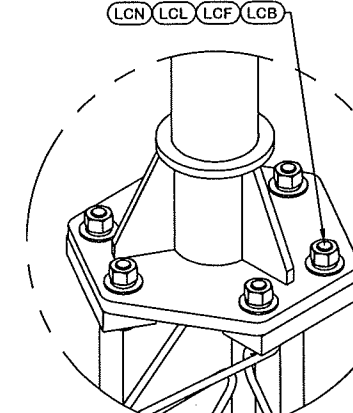
DETAIL B
END SIDE PLATE ANGLE CONNECTION



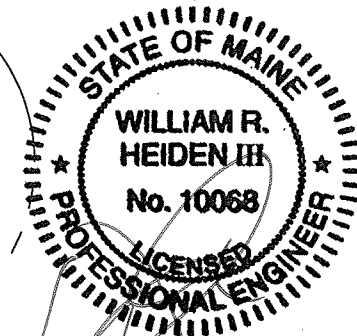
DETAIL C
MID SIDE PLATE ANGLE CONNECTION



STEP BOLT INSTALLATION



LEG TO LEG CONNECTION
(SIDE PLATES NOT SHOWN FOR CLARITY)



NOV 15 2016

William R. Heiden III, ME P.E. #10068

REV	DESCRIPTION OF REVISIONS	CPD	BY	DATE
@A	<ACBATCH>		SKK	8/10/2016
REVISION HISTORY				

SITE	CITY OF PORTLAND FD, ME MOTOROLA SOLUTIONS U 19 X 180'
COPYRIGHT 2013	
PROPRIETARY NOTE:	THE DATA AND TECHNIQUES CONTAINED IN THIS DRAWING ARE PROPRIETARY INFORMATION OF VALMONT INDUSTRIES AND CONSIDERED A TRADE SECRET. ANY USE OR DISCLOSURE WITHOUT THE CONSENT OF VALMONT INDUSTRIES IS STRICTLY PROHIBITED.

DESCRIPTION	SECTION V-13.0 (60' - 80' ELEVATION)
STRUCTURE APPROVAL	SKK 8/10/2016
FOUNDATION APPROVAL	

<p>1-877-467-4763 Plymouth, IN 1-800-547-2151 Salem, OR</p>	
ENG. FILE NO.	324370
DWG. NO.	268614T